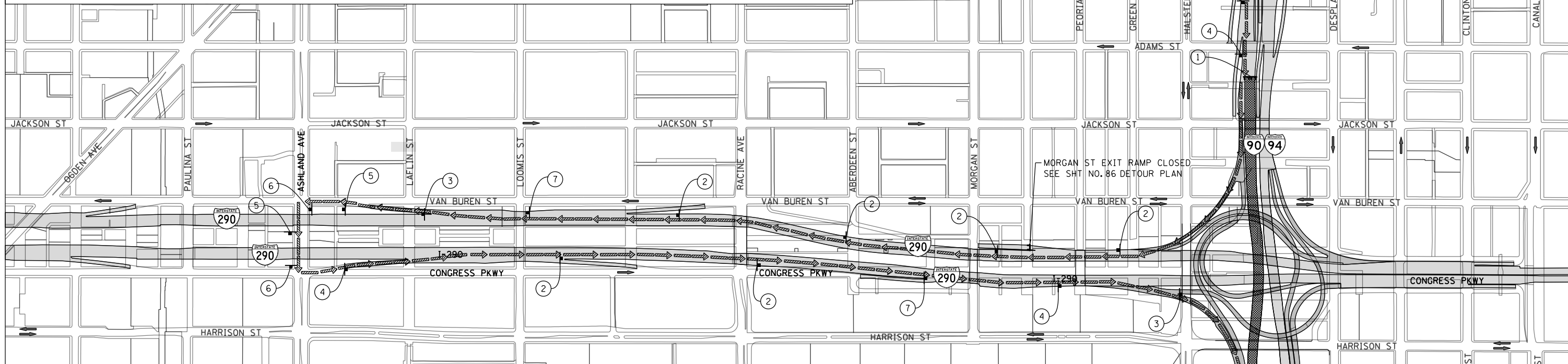


TRAFFIC CONTROL NOTES

1. DETOUR SIGNING MUST BE INSTALLED PRIOR TO THE CLOSURE OF EB I-90/94 (SB).
2. ROAD CLOSURE SHALL FOLLOW THE LATEST VERSION OF THE IDOT HIGHWAY STANDARDS AND DISTRICT 1 STANDARD DETAIL TC-08. SEE SUGGESTED STAGES OF CONSTRUCTION AND TRAFFIC CONTROL PLANS FOR ADDITIONAL INFORMATION.
3. PLACEMENT AND SPACING OF SIGNS AND BARRICADES SHALL BE IN ACCORDANCE WITH IDOT DISTRICT 1 STANDARD DETAIL TC-08 AND TC-21.
4. ALL DETOUR SIGNS SHALL HAVE AN ORANGE BACKGROUND WITH BLACK LETTERS.
5. THE CONTRACTOR IS RESPONSIBLE FOR COORDINATION WITH OTHER ROAD WORK IN THE AREA.
6. THE COST OF SUPPLYING, ERECTING AND MAINTAINING BARRICADES, WARNING LIGHTS AND STANDARD SIGNS ALONG ALL DETOUR ROUTES SHALL BE INCLUDED IN THE CONTRACT COST OF TRAFFIC CONTROL AND PROTECTION (SPECIAL).
7. THIS DETOUR CAN ONLY BE USED DURING GIRDER ERECTION. REFER TO THE SPECIAL PROVISIONS "GIRDER ERECTION INFORMATION AND RESTRICTIONS" FOR ADDITIONAL INFORMATION.

LEGEND

- SUGGESTED PRIMARY ROUTE FOR EB I-90/94 (SB)
- TEMPORARY SIGN
- EXISTING SIGN
- EXISTING POLE
- SIGN BARRICADE TYPE III
- TWO-WAY STREET
- ONE-WAY STREET
- RAMP CLOSURE

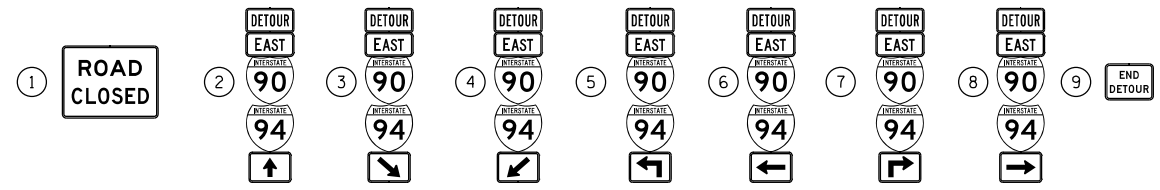


DETOUR SIGNS TYPE & SIZE

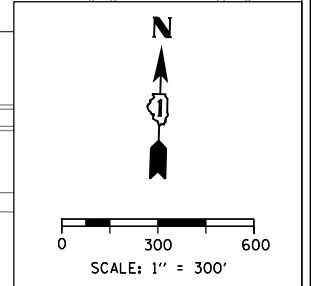
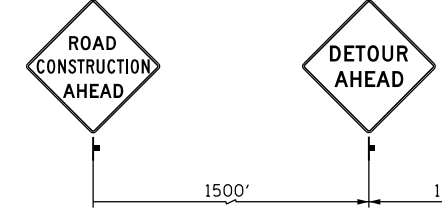
(ALL SIGN COLORS SHALL BE ACCORDING TO THE LATEST EDITION OF THE MUTCD)

| | | | | | | | |
|--|-----------------|--|----------------|--|-----------------|--|--|
| | M1-1 (24"x24") | | M5-1 (21"x15") | | W20-2 (48"x48") | | R11-2 SEE TC-21 FOR SIGN INFORMATION (48"x30") |
| | M3-2 (24"x12") | | M6-1 (21"x15") | | W20-1103-48 | | |
| | M4-8 (24"x12") | | M6-2 (21"x15") | | | | |
| | M4-8A (24"x18") | | M6-3 (21"x15") | | | | |

SIGN ASSEMBLIES



ADVANCE INFORMATION SIGNS



FILE PATH = C:\Users\chiu\Desktop\60W28-Post\ETD\ETD\60W28-sht-Detour-86.dgn



D160W28-sht-Detour-86.dgn
 USER NAME = chiue
 PLOT SCALE = 600.0000' / in.
 PLOT DATE = 4/27/2014

| | |
|------------|-----------|
| DESIGNED - | REVISED - |
| DRAWN - | REVISED - |
| CHECKED - | REVISED - |
| DATE - | REVISED - |

**STATE OF ILLINOIS
 DEPARTMENT OF TRANSPORTATION**

DETOUR PLAN
EB I-90/94 (SB) (GIRDER ERECTION)
 SCALE: 1" = 300' SHEET 1 OF 1 SHEETS STA. TO STA.

| | | | | |
|--------------------|-----------|--------|--------------|-----------|
| F.A.I. RTE. | SECTION | COUNTY | TOTAL SHEETS | SHEET NO. |
| 90/94/290 | 2013-010R | COOK | 747 | 90A |
| CONTRACT NO. 60W28 | | | | |

ILLINOIS FED. AID PROJECT