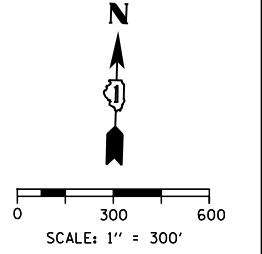
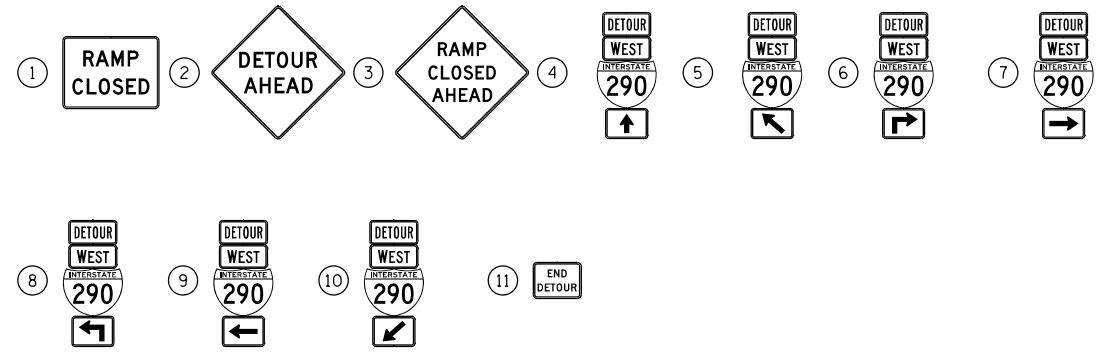
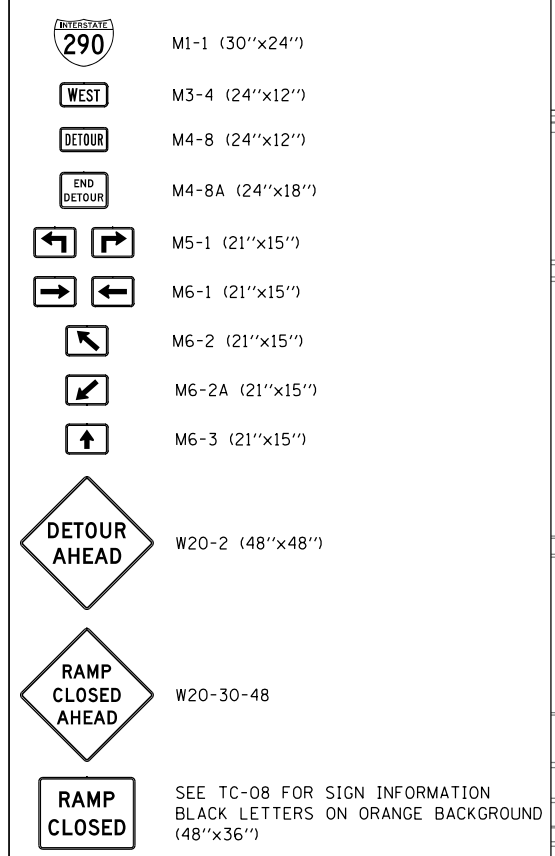


SIGN ASSEMBLIES



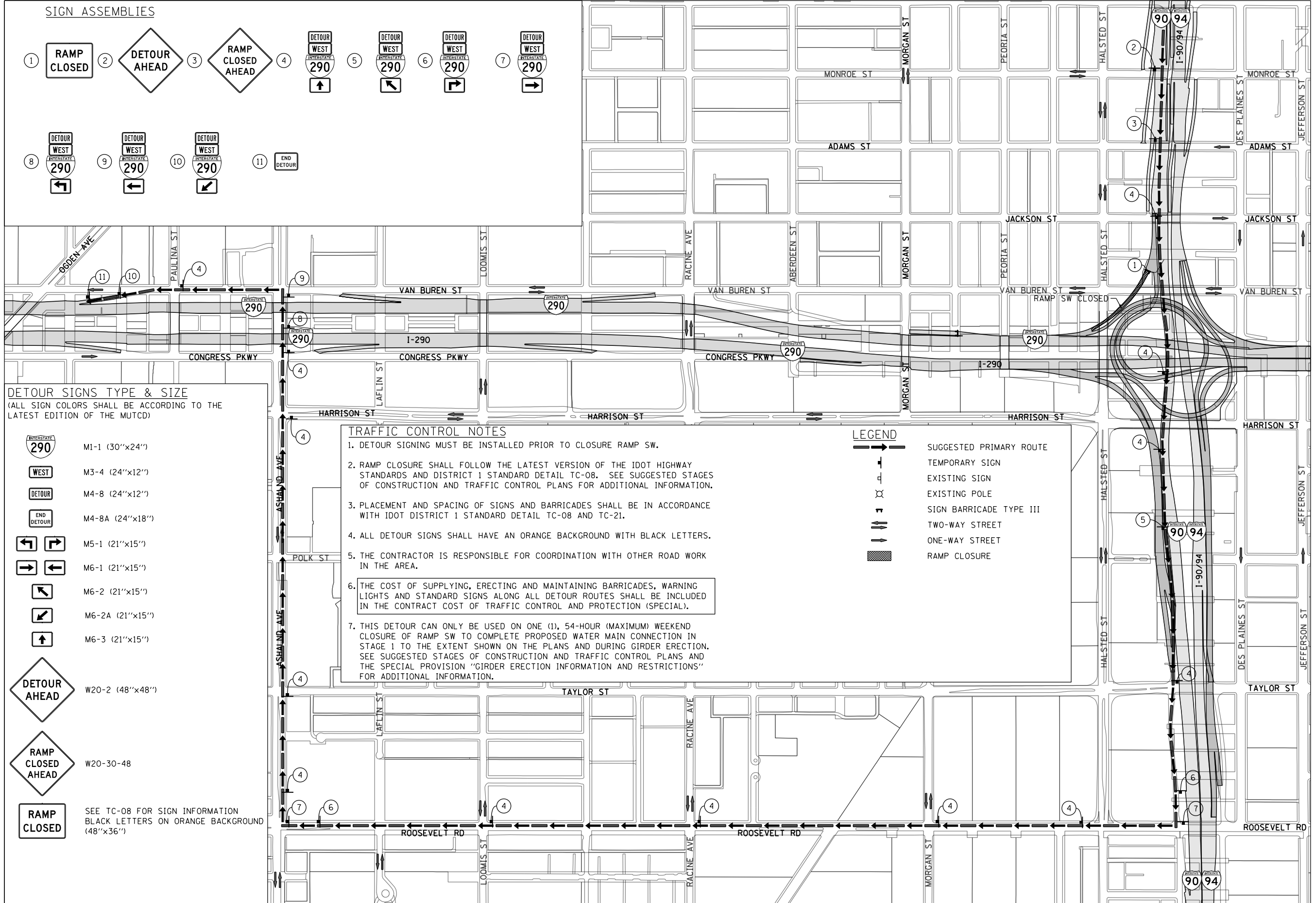
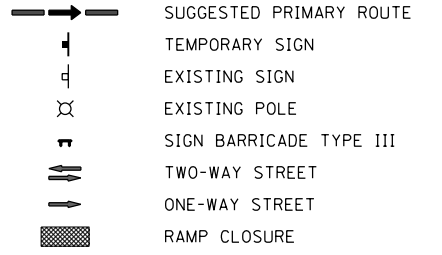
DETOUR SIGNS TYPE & SIZE
(ALL SIGN COLORS SHALL BE ACCORDING TO THE LATEST EDITION OF THE MUTCD)



TRAFFIC CONTROL NOTES

1. DETOUR SIGNING MUST BE INSTALLED PRIOR TO CLOSURE RAMP SW.
2. RAMP CLOSURE SHALL FOLLOW THE LATEST VERSION OF THE IDOT HIGHWAY STANDARDS AND DISTRICT 1 STANDARD DETAIL TC-08. SEE SUGGESTED STAGES OF CONSTRUCTION AND TRAFFIC CONTROL PLANS FOR ADDITIONAL INFORMATION.
3. PLACEMENT AND SPACING OF SIGNS AND BARRICADES SHALL BE IN ACCORDANCE WITH IDOT DISTRICT 1 STANDARD DETAIL TC-08 AND TC-21.
4. ALL DETOUR SIGNS SHALL HAVE AN ORANGE BACKGROUND WITH BLACK LETTERS.
5. THE CONTRACTOR IS RESPONSIBLE FOR COORDINATION WITH OTHER ROAD WORK IN THE AREA.
6. THE COST OF SUPPLYING, ERECTING AND MAINTAINING BARRICADES, WARNING LIGHTS AND STANDARD SIGNS ALONG ALL DETOUR ROUTES SHALL BE INCLUDED IN THE CONTRACT COST OF TRAFFIC CONTROL AND PROTECTION (SPECIAL).
7. THIS DETOUR CAN ONLY BE USED ON ONE (1), 54-HOUR (MAXIMUM) WEEKEND CLOSURE OF RAMP SW TO COMPLETE PROPOSED WATER MAIN CONNECTION IN STAGE 1 TO THE EXTENT SHOWN ON THE PLANS AND DURING GIRDER ERECTION. SEE SUGGESTED STAGES OF CONSTRUCTION AND TRAFFIC CONTROL PLANS AND THE SPECIAL PROVISION "GIRDER ERECTION INFORMATION AND RESTRICTIONS" FOR ADDITIONAL INFORMATION.

LEGEND



FILE PATH = C:\Users\Chiu\Desktop\60W28-Post F.mxd\DETOUR\0160W28-sht-DeTour-02.dgn



D160W28-sht-DeTour-02.dgn	DESIGNED - AFC	REVISED -
USER NAME = chiue	DRAWN - AFC	REVISED -
PLOT SCALE = 600.0000' / in.	CHECKED - KCF	REVISED -
PLOT DATE = 4/27/2014	DATE - 4/28/2014	REVISED -

STATE OF ILLINOIS
DEPARTMENT OF TRANSPORTATION

DETOUR PLAN
RAMP SW (STAGE 1 AND GIRDER ERECTION)

SCALE: 1" = 300' SHEET 1 OF 1 SHEETS STA. TO STA.

F.A.I. R.E.	SECTION	COUNTY	TOTAL SHEETS	SHEET NO.
90/94/290	2013-010R	COOK	747	87
CONTRACT NO. 60W28				
ILLINOIS FED. AID PROJECT				