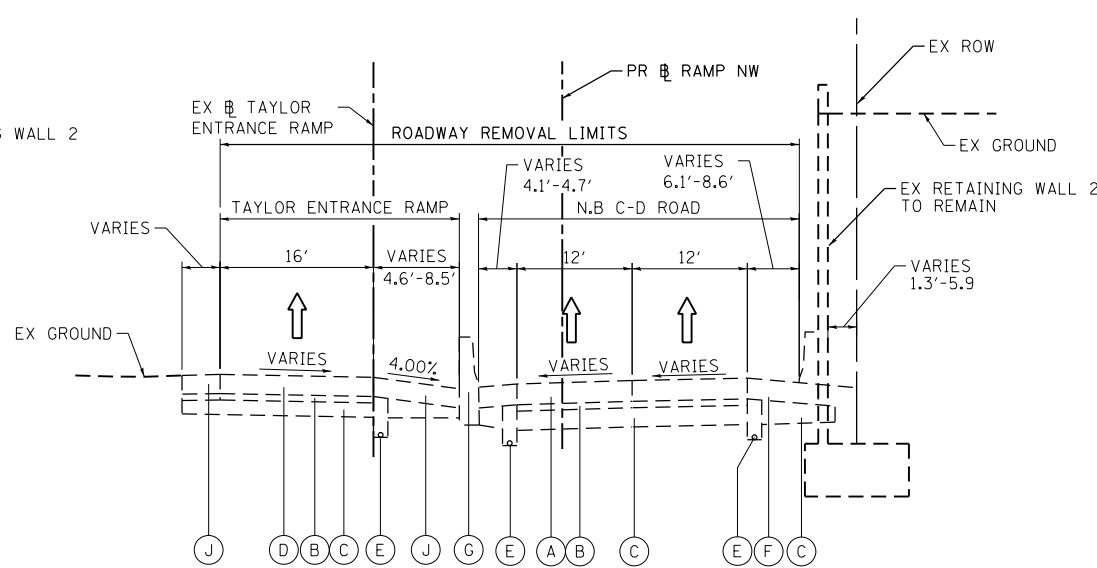


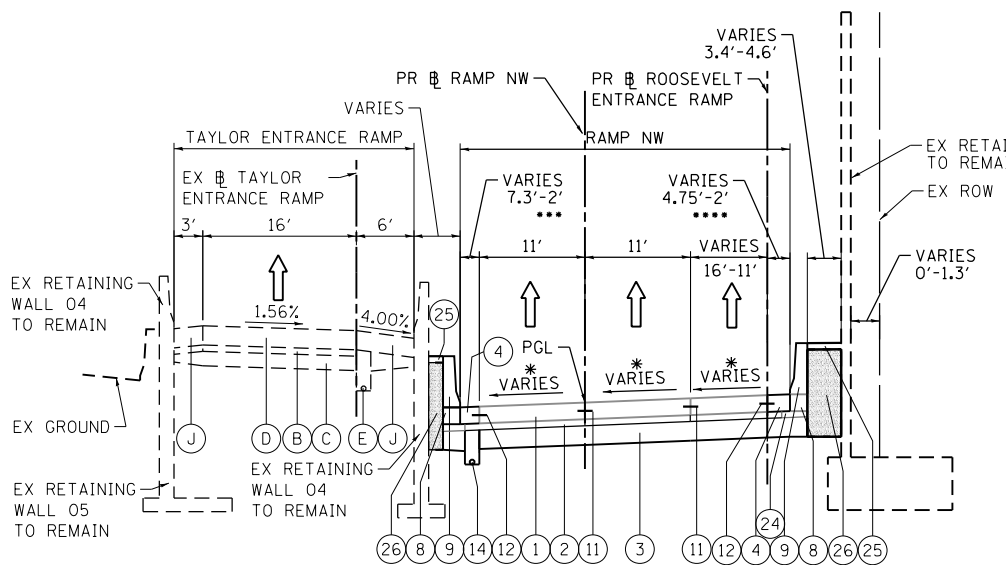
3 EXISTING TYPICAL SECTION
RAMP NW

STA 1806+91.96 TO STA 1813+60.00



5 EXISTING TYPICAL SECTION
RAMP NW

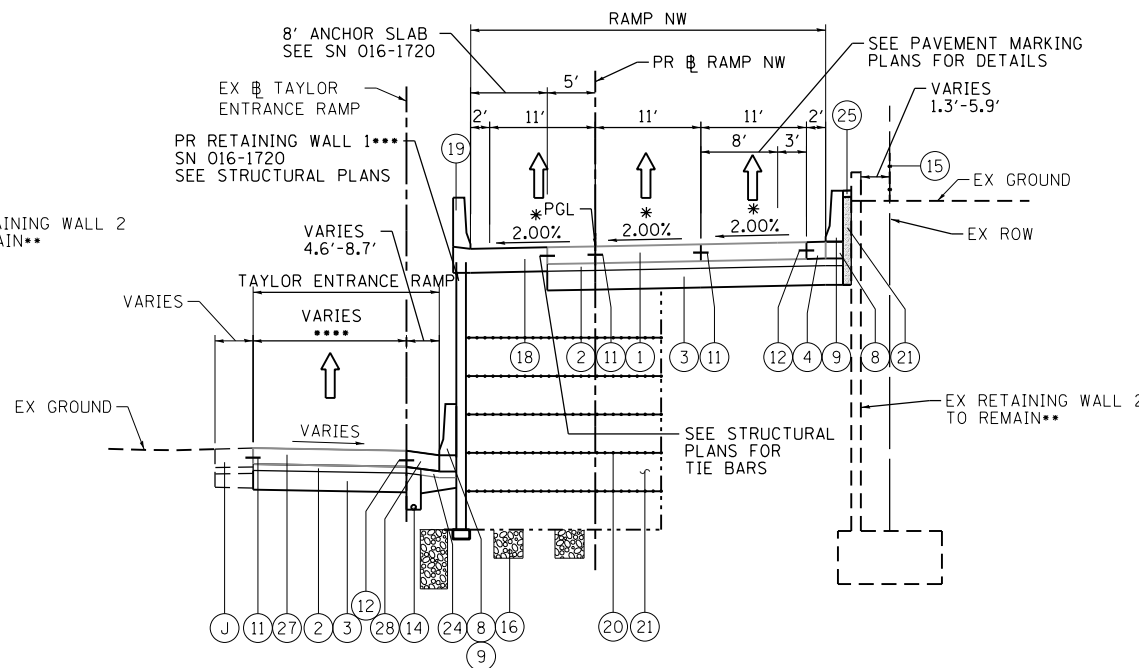
STA 1813+60.00 TO STA 1816+56.17



4 PROPOSED TYPICAL SECTION
RAMP NW

STA 1806+91.96 TO STA 1813+60.00

* SEE NOTE 4
** SEE SN 016-2024 STRUCTURAL PLAN FOR LIMITS OF STRUCTURAL REPAIR OF CONCRETE
*** BEGIN 2' PORTLAND CEMENT CONCRETE SHOULDER 10 1/2" AT STA 1808+21.47
**** END 4.75' PCC SHLD, 10 1/2" AND TRANSITION TO 2' PCC SHLD 10 1/2" AT STA 1810+08.81



6 PROPOSED TYPICAL SECTION
RAMP NW

STA 1813+60.00 TO STA 1816+56.17

* SEE NOTE 4
** SEE SN 016-2024 STRUCTURAL PLAN FOR LIMITS OF STRUCTURAL REPAIR OF CONCRETE
*** PR RETAINING WALL 1 (WEST WALL) BEGINS AT STA 1813+60.00
**** PAVEMENT WIDTH VARIES FROM 15' TO 2' FROM STA 1813+40.36 TO STA 1814+77.99 AND 2' FROM STA 1814+77.99 TO STA 1816+03.50
IMPROVEMENT ON TAYLOR STREET ENTRANCE RAMP BEGINS AT STA 1813+40.36

EXISTING

- (A) CONTINUOUSLY REINFORCED PORTLAND CEMENT CONCRETE PAVEMENT, 13"
- (B) STABILIZED SUBBASE, 4"
- (C) POROUS GRANULAR EMBANKMENT, SPECIAL VARIES 0" TO 36"
- (D) PORTLAND CEMENT CONCRETE PAVEMENT, 12"
- (E) PIPE UNDERDRAIN 6", FABRIC LINED TRENCH
- (F) BITUMINOUS SHOULDER, 13"
- (G) CONCRETE BARRIER
- (H) CONCRETE MEDIAN SURFACE
- (I) SUBBASE GRANULAR MATERIAL, 12"
- (J) BITUMINOUS SHOULDER, 10"

PROPOSED

- (1) PORTLAND CEMENT CONCRETE PAVEMENT 10 1/2" (JOINTED)
- (2) STABILIZED SUBBASE-HOT MIX ASPHALT, 4"
- (3) AGGREGATE SUBGRADE IMPROVEMENT 12"
- (4) PORTLAND CEMENT CONCRETE SHOULDERS 10 1/2"
- (5) RETAINING WALL / MSE WALL
- (6) ITEM REMOVED
- (7) TOPSOIL FURNISH AND PLACE, 4" SEEDING, CLASS 2A
- (8) CONCRETE BARRIER BASE
- (9) CONCRETE BARRIER, SINGLE FACE, 42" HEIGHT
- (10) CONCRETE BARRIER, DOUBLE FACE, 42" HEIGHT
- (11) LONGITUDINAL CONSTRUCTION JOINT, #6 EPOXY COATED BARS AT 24" CENTERS, INCLUDED IN COST OF PCC PAVEMENT
- (12) SHOULDER LONGITUDINAL CONSTRUCTION JOINT, #6 EPOXY COATED BARS AT 24" CENTERS, INCLUDED IN COST OF PCC SHOULDERS
- (13) TIE BARS, #6 EPOXY COATED BARS AT 24" CENTERS, INCLUDED IN COST OF COMBINATION CONCRETE CURB AND GUTTER TYPE B-6.24
- (14) PIPE UNDERDRAINS 6"
- (15) CHAIN LINK FENCE, 6'
- (16) AGGREGATE COLUMN (SEE STRUCTURAL PLANS)
- (17) CAST-IN-PLACE CONCRETE COPING SEAL WITH PJF-4" (SEE STRUCTURAL PLANS)
- (18) ANCHOR SLAB (SEE STRUCTURAL PLANS)
- (19) PARAPET (SEE STRUCTURAL PLANS)
- (20) SOIL REINFORCEMENT (SEE STRUCTURAL PLANS)
- (21) LIGHTWEIGHT FILL (SEE STRUCTURAL PLANS)
- (22) TEMPORARY PAVEMENT
- (23) TEMPORARY CONCRETE BARRIER
- (24) SUBBASE GRANULAR MATERIAL, TYPE C 4"
- (25) CONCRETE MEDIAN SURFACE, 4 INCH
- (26) POROUS GRANULAR EMBANKMENT
- (27) PORTLAND CEMENT CONCRETE PAVEMENT 10" (JOINTED)
- (28) PORTLAND CEMENT CONCRETE SHOULDER, 10"
- (29) TEMPORARY CONCRETE BARRIER (TO REMAIN PERMANENTLY)
- (30) POLYMERIZED HOT-MIX ASPHALT SURFACE COURSE, MIX "F", N90, (IL-9.5 MM): 1 3/4"
- (31) HOT-MIX ASPHALT BINDER COURSE, IL-19.0, N70: 2 1/4"
- (32) HOT-MIX ASPHALT SURFACE COURSE, MIX "D", N70, (IL-9.5 MM): 2"

NOTES:

1. THE ADDITIONAL THICKNESS OF AGGREGATE SUBGRADE IMPROVEMENT UNDER THE SHOULDER TO DRAIN TO UNDERDRAINS SHALL BE INCLUDED IN THE COST PER SQ. YD. OF AGGREGATE SUBGRADE IMPROVEMENT 24".
2. THE MAXIMUM ROLLOVER BETWEEN THE PAVEMENT AND THE SHOULDER ON THE HIGH SIDE OF THE SUPERELEVATION IS 8.0%.
3. FOR PORTLAND CEMENT CONCRETE PAVEMENT (JOINTED) DETAILS, SEE JOINTING AND PCC PAVEMENT DETAIL PLAN.
4. SEE SE TRANSITION DATA TABLE FOR SUPERELEVATION TRANSITIONS.
5. EXISTING SLOPE AND PAVEMENT AS SHOWN IS BASED ON I-90/94 PLANS, 1987. FIELD VERIFICATION IS REQUIRED FOR CORRECT SLOPES AND PAVEMENT.
6. SEE ROADWAY DETAILS FOR ADDITIONAL INFORMATION AND LIMITS OF VARIOUS TYPES OF CONCRETE BARRIERS.

BOXED ITEMS ARE INCLUDED IN THE COST OF THE CONTRACT.

FILE PATH = C:\Users\vlizadeh\OneDrive\Desktop\Final_Sheets\0160W28-sht-Typical-02.dgn



D160W28-sht-Typical-02.dgn
USER NAME = alizadeh
PLOT SCALE = 20.0000' / in.
PLOT DATE = 4/27/2014

DESIGNED - KAM
DRAWN - NSA
CHECKED - KCF
DATE - 04/28/14

REVISED -
REVISED -
REVISED -
REVISED -

STATE OF ILLINOIS
DEPARTMENT OF TRANSPORTATION

TYPICAL SECTIONS

SCALE: NONE SHEET 2 OF 11 SHEETS STA. TO STA.

F.A.I. RTE.	SECTION	COUNTY	TOTAL SHEETS	SHEET NO.
90/94/290	2013-010R	COOK	747	23
CONTRACT NO. 60W28				
ILLINOIS FED. AID PROJECT				