

STATE OF ILLINOIS
DEPARTMENT OF TRANSPORTATION

F.A.P. RTE.	SECTION	COUNTY	TOTAL SHEETS	SHEET NO.
741		MACON	12	1
ILLINOIS			CONTRACT NO. 74902	
* D7 SIGNAL MODERNIZATION 2019-2				

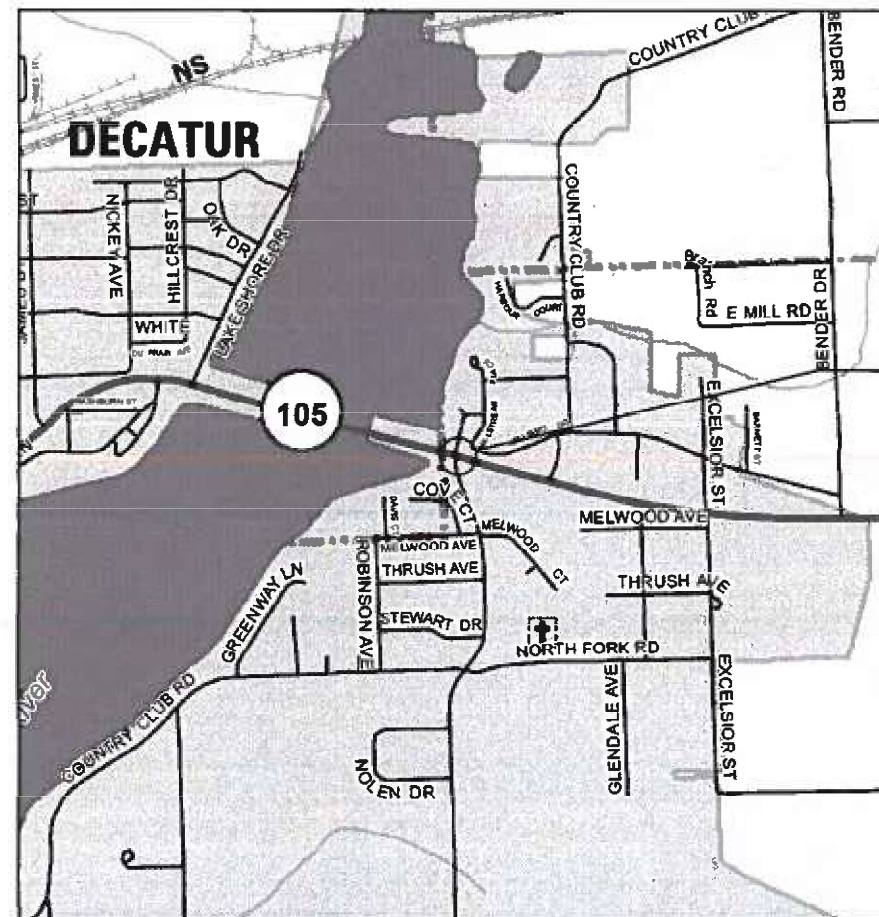
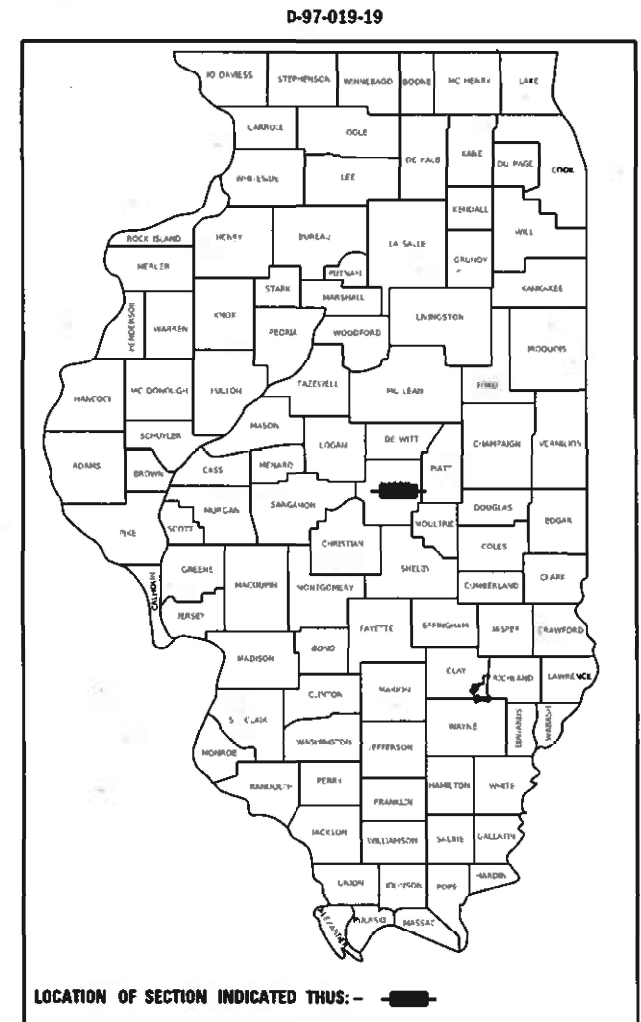
FOR INDEX OF SHEETS, SEE SHEET NO. 2

AADT (2017) = 4250

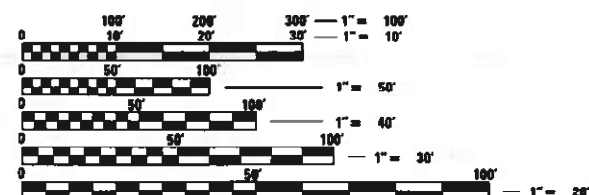
PROPOSED HIGHWAY PLANS

FAP ROUTE 741 (IL 105)
SECTION D7 SIGNAL MODERNIZATION 2019-2
PROJECT STP-FOMB(113)
SIGNAL MODERNIZATION
MACON COUNTY

C-97-031-19



PROPOSED SIGNAL MODIFICATION
COUNTRY CLUB RD & IL 105



FULL SIZE PLANS HAVE BEEN PREPARED USING STANDARD ENGINEERING SCALES. REDUCED SIZED PLANS WILL NOT CONFORM TO STANDARD SCALES. IN MAKING MEASUREMENTS ON REDUCED PLANS, THE ABOVE SCALES MAY BE USED.

J.U.L.I.E.
JOINT UTILITY LOCATION INFORMATION FOR EXCAVATORS
1-800-892-0123
OR 811

PROJECT ENGINEER: MARK DAUGHERTY
PROJECT MANAGER: ANDY BAKER
PHONE: (217) 342-8241

CONTRACT NO. 74902



STATE OF ILLINOIS
DEPARTMENT OF TRANSPORTATION

SUBMITTED March 23 20 22
Jeffrey P. Myrsky
REGIONAL ENGINEER

May 13, 2022 [Signature]
ENGINEER OF DESIGN AND ENVIRONMENT

May 13, 2022 [Signature]
DIRECTOR OF HIGHWAYS PROJECT IMPLEMENTATION

PRINTED BY THE AUTHORITY
OF THE STATE OF ILLINOIS

TRAFFIC SIGNAL GENERAL NOTES

INDEX OF SHEETS

SHEET NO	TITLE
1	COVER SHEET
2	GENERAL NOTES, INDEX OF SHEETS, LIST OF STANDARDS
3	SUMMARY OF QUANTITIES
4	SUMMARY OF QUANTITIES
5	DETAILS
6	TRAFFIC SIGNAL PLANS-UTILITY LAYOUT
7	TRAFFIC SIGNAL PLANS-TEMPORARY SIGNAL LAYOUT
8	TRAFFIC SIGNAL PLANS-REMOVAL
9	TRAFFIC SIGNAL PLANS-SIGNAL LAYOUT
10	TRAFFIC SIGNAL PLANS-CABLE LAYOUT
11	TRAFFIC SIGNAL PLANS-DETECTOR LOOP LAYOUT
12	TRAFFIC SIGNAL PLANS-BORING LOGS

THE FOLLOWING STANDARDS ARE A PART OF THESE PLANS AND ARE INCLUDED FOLLOWING THE LAST NUMBERED SHEET OF THE PLANS.

000001-08	STANDARD SYMBOLS, ABBREVIATIONS, AND PATTERNS
001006	DECIMAL OF AN INCH AND OF A FOOT
606301-04	PC CONCRETE ISLANDS AND MEDIANS
701101-05	OFF-ROAD OPERATIONS, MULTILANE, 15' TO 24" FROM PAVEMENT EDGE
701106-02	OFF-ROAD OPERATIONS, MULTILANE, MORE THAN 15' AWAY
701421-08	LANE CLOSURE, MULTILANE, DAY OPERATIONS, FOR SPEEDS > 45 MPH TO 55 MPH
701426-09	LANE CLOSURE, MULTILANE, INTERMITTENT OR MOVING OPERATION FOR SPEEDS >45 MPH
701701-10	URBAN LANE CLOSURE, MULTILANE INTERSECTION
701901-08	TRAFFIC CONTROL DEVICES
720001-01	SIGN PANEL MOUNTING DETAILS
720006-04	SIGN PANEL ERECTION DETAILS
720016-04	MAST ARM MOUNTED STREET NAME SIGNS
780001-05	TYPICAL PAVEMENT MARKINGS
805001-01	ELECTRICAL SERVICE INSTALLATION DETAILS
814001-03	HANDHOLES
814006-03	DOUBLE HANDHOLES
857001-01	STANDARD PHASE DESIGNATION DIAGRAMS AND PHASE SEQUENCES
873001-02	TRAFFIC SIGNAL GROUNDING & BONDING
877001-08	STEEL MAST ARM ASSEMBLY AND POLE 16' THROUGH 55'
878001-11	CONCRETE FOUNDATION DETAILS
880006-01	TRAFFIC SIGNAL MOUNTING DETAILS
886001-01	DETECTOR LOOP INSTALLATIONS
886006-01	TYPICAL LAYOUTS FOR DETECTION LOOPS
420001-10	PAVEMENT JOINTS

THIS PROJECT CONSISTS OF REPLACING ALL TRAFFIC SIGNALS, CONTROLLER, DETECTOR LOOPS AND ALL OTHER WORK NECESSARY TO COMPLETE. THE INTERSECTION IS LOCATED ALONG ILL 105 AT COUNTRY CLUB ROAD IN THE CITY OF DECATUR, MACON COUNTY.

THE EXISTING UTILITY LINES ARE SHOWN ON THE PLANS TO INDICATE THEIR PRESENCE AND APPROXIMATE LOCATION. THE CONTRACTOR SHALL VERIFY THE EXACT LOCATION OF ALL UNDERGROUND UTILITIES PRIOR TO BEGINNING CONSTRUCTION. CALL J.U.L.I.E. AT 1-800-892-0123. THE TRAFFIC SIGNAL UTILITY LINES WILL BE LOCATED BY IDOT, CALL 217-342-3951.

THE TRAFFIC SIGNAL ENGINEER AT THE ILLINOIS DEPARTMENT OF TRANSPORTATION SHALL BE NOTIFIED AT 217-342-8291 AT LEAST 72 HOURS PRIOR TO TURNING ON ANY FLASHER OR CONTROLLER UNIT.

THE SIZE OF THE CABLE SUPPLIED SHALL BE EQUAL TO OR GREATER THAN THE SIZE OF THE CABLE REQUIRED TO CARRY THE LOAD BETWEEN THE CONTROLLER AND THE SERVICE INSTALLATION

A 2 FOOT MINIMUM, 6 FOOT DESIRABLE, HORIZONTAL CLEARANCE SHALL BE MAINTAINED FROM THE BACK OF CURB TO THE EDGE OF HANDHOLES, JUNCTION BOXES AND SIGNAL POST FOUNDATIONS. A 5 FOOT MINIMUM HORIZONTAL CLEARANCE SHALL BE MAINTAINED FROM THE BACK OF THE CURB TO ALL MAST ARM FOUNDATIONS. CONTROLLER FOUNDATIONS SHALL BE LOCATED AS FAR FROM THE BACK OF THE CURB AS POSSIBLE TO PROTECT THE CONTROLLER CABINET.

ALL HARDWARE SHALL BE TIGHTENED AND WELL SECURED. CABLES SHALL BE NEATLY WOUND IN HANDHOLES. CABLES SHALL BE NEATLY TRAINED IN THE CONTROLLER CABINET.

ALL THREADS OF BOLTS USED IN ASSEMBLY OF TRAFFIC SIGNAL COMPONENTS SHALL BE COATED WITH A NON-LEAD BASED ANTI-SEIZE COMPOUND, SIMILAR TO LEAD PLATE, PRIOR TO ASSEMBLY.

NO ADDITIONAL COMPENSATION WILL BE ALLOWED FOR PLACING CONDUIT AT GREATER THAN 2 FOOT MINIMUM DEPTH TO AVOID OBSTACLES SUCH AS UNDERGROUND UTILITIES.

THE CONTRACTOR IS RESPONSIBLE FOR UNCOVERING OR HAND DIGGING AROUND UTILITIES AS NECESSARY. THE COST OF THIS WORK IS TO BE INCLUDED WITH THE ELECTRICAL WORK PAY ITEM.

THE NUMBER OF CONDUCTORS FOR ELECTRIC CABLES AS SHOWN ON THE PLANS SHALL BE THE MINIMUM NUMBER OF CONDUCTORS FURNISHED FOR EACH LOCATION. THE CONTRACTOR MAY SUBSTITUTE AN ELECTRIC CABLE WITH MORE CONDUCTORS THAN SPECIFIED BUT NO ADDITIONAL COMPENSATION WILL BE MADE FOR THE EXTRA CONDUCTORS.

ALL NEW TRAFFIC SIGNAL WIRING SHALL EXTEND FROM CONTROLLER TO SIGNAL. SPLICES IN HANDHOLES WILL BE ALLOWED ONLY FOR DETECTOR LOOPS IN THE FIRST HANDHOLE OR GULFBOX.

SPLICES WILL BE ALLOWED INSIDE THE HANDHOLE LOCATED AT THE BASE ON THE MAST ARM POLE FOR ANY SIGNAL HEADS LOCATED ON THE MAST ARM.

ALL MAST ARM MOUNTED SIGNAL HEADS ON AN INDIVIDUAL MAST ARM SHALL BE MOUNTED SO THAT THE RED INDICATIONS ARE LEVEL WITH EACH OTHER.

ALL MAST ARM MOUNTED SIGNAL HEADS SHALL BE MOUNTED AS TO ALIGN WITH THE CENTER OF THE LANE.

TRAFFIC SIGNAL HEADS SHALL BE PROPERLY COVERED PRIOR TO INTERSECTION TURN-ON OR AS DIRECTED BY THE ENGINEER. THIS COST SHALL BE INCLUDED WITH THE COST OF THE ASSOCIATED SIGNAL HEAD PAY ITEMS.

ALL TRAFFIC SIGNAL MAST ARM ASSEMBLIES (STANDARD, COMBINATION, OR DUAL) MUST BE DESIGNED FOR THE LOADINGS SHOWN ON THE HIGHWAY STANDARDS OR THESE SIGNAL PLANS, WHICHEVER IS GREATER.

REV. - MS

MODEL: Default
 FILE: Macos:pw:\ilodot-pw\benley.com\pwwd\DOT\Documents\DOT_Offices\Dir\ct_7\Project\17492\CAD\data\CAD\sheet\07492-rl-15-11_105-Country_Club_Road.dgn

USER NAME = steffenmk	DESIGNED -	REVISED -	STATE OF ILLINOIS DEPARTMENT OF TRANSPORTATION	INTERSECTION OF IL 105 & COUNTRY CLUB ROAD		F.A.P. RTE.	SECTION	COUNTY	TOTAL SHEETS	SHEET NO.	
	DRAWN -	REVISED -		INDEX OF SHEETS GENERAL NOTES		741	*	Macon	12	2	
PLOT SCALE = 30.0000' / in.	CHECKED -	REVISED -		SCALE:	SHEET	OF	SHEETS	STA.	TO	STA.	ILLINOIS FED. AID PROJECT
PLOT DATE = 3/23/2022	DATE -	REVISED -									

80% FED
20% STATE
URBAN

80% FED
20% STATE
URBAN

SUMMARY OF QUANTITIES			TOTAL QUANTITIES	CONSTRUCTION TYPE CODE		
CODE NO	ITEM	UNIT		0021		
87700280	STEEL MAST ARM ASSEMBLY AND POLE, 48 FT.	EACH	1	1		
87800100	CONCRETE FOUNDATION, TYPE A	FOOT	9	9		
87800150	CONCRETE FOUNDATION, TYPE C	FOOT	3.5	3.5		
87800400	CONCRETE FOUNDATION, TYPE E 30-INCH DIAMETER	FOOT	13.5	13.5		
87800415	CONCRETE FOUNDATION, TYPE E 36-INCH DIAMETER	FOOT	49	49		
88040070	SIGNAL HEAD, POLYCARBONATE, LED, 1-FACE, 3-SECTION, BRACKET MOUNTED	EACH	4	4		
88040090	SIGNAL HEAD, POLYCARBONATE, LED, 1-FACE, 3-SECTION, MAST ARM MOUNTED	EACH	6	6		
88040110	SIGNAL HEAD, POLYCARBONATE, LED, 1-FACE, 4-SECTION, BRACKET MOUNTED	EACH	4	4		
88040120	SIGNAL HEAD, POLYCARBONATE, LED, 1-FACE, 4-SECTION, MAST ARM MOUNTED	EACH	4	4		
88040150	SIGNAL HEAD, POLYCARBONATE, LED, 1-FACE, 5-SECTION, BRACKET MOUNTED	EACH	1	1		
88040160	SIGNAL HEAD, POLYCARBONATE, LED, 1-FACE, 5-SECTION, MAST ARM MOUNTED	EACH	1	1		

SUMMARY OF QUANTITIES			TOTAL QUANTITIES	CONSTRUCTION TYPE CODE		
CODE NO	ITEM	UNIT		0021		
88200410	TRAFFIC SIGNAL BACKPLATE, LOUVERED, FORMED PLASTIC	EACH	21	21		
88500100	INDUCTIVE LOOP DETECTOR	EACH	18	18		
88600100	DETECTOR LOOP, TYPE I	FOOT	1873	1873		
89000100	TEMPORARY TRAFFIC SIGNAL INSTALLATION	EACH	1	1		
89500120	REMOVE EXISTING SERVICE INSTALLATION	EACH	1	1		
89502375	REMOVE EXISTING TRAFFIC SIGNAL EQUIPMENT	EACH	1	1		
89502380	REMOVE EXISTING HANDHOLE	EACH	9	9		
89502382	REMOVE EXISTING DOUBLE HANDHOLE	EACH	1	1		
89502385	REMOVE EXISTING CONCRETE FOUNDATION	EACH	5	5		
X4402020	CONCRETE MEDIAN SURFACE REMOVAL	SQ FT	376	376		
X7240600	REMOVE AND RE-ERECT EXISTING SIGN	EACH	4	4		
X8050115	SERVICE INSTALLATION, TYPE A (MODIFIED)	EACH	1	1		

REV. - MS

MODEL: Default
FILE: Macon_PlanSheet.dwg
bentley.com:PNWDDOT\Documents\DOT Offices\District 7\Projects\74902\CADD\Drawings\74902-sht-15-11-105-County Club Rd.dgn

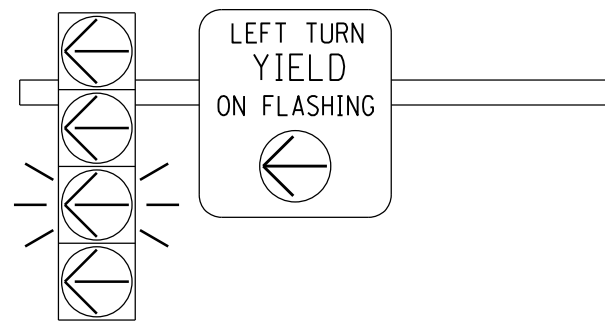
USER NAME = steffemk	DESIGNED -	REVISED -
PLOT SCALE = 29.9997' / in.	DRAWN -	REVISOR -
PLOT DATE = 3/23/2022	CHECKED -	REVISION -
	DATE -	REVISION -

STATE OF ILLINOIS
DEPARTMENT OF TRANSPORTATION

INTERSECTION OF IL 105 & COUNTRY CLUB ROAD
SUMMARY OF QUANTITIES

SCALE: SHEET OF SHEETS STA. TO STA.

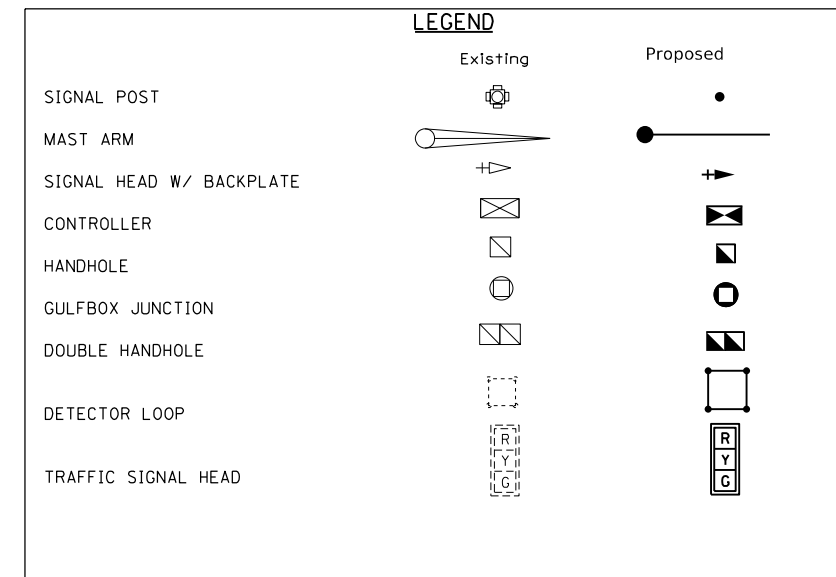
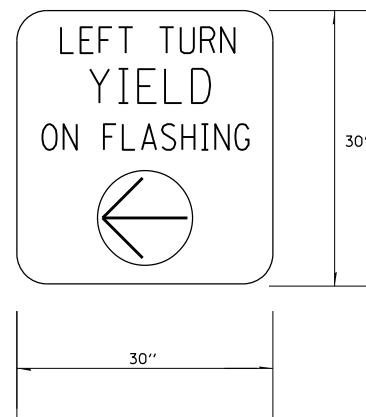
F.A.P. RTE.	SECTION	COUNTY	TOTAL SHEETS	SHEET NO.
741	*	Macon	12	4
ILLINOIS FED. AID PROJECT			CONTRACT NO. 74902	



FLASHING YELLOW ARROW
SIGN PANEL DETAILS

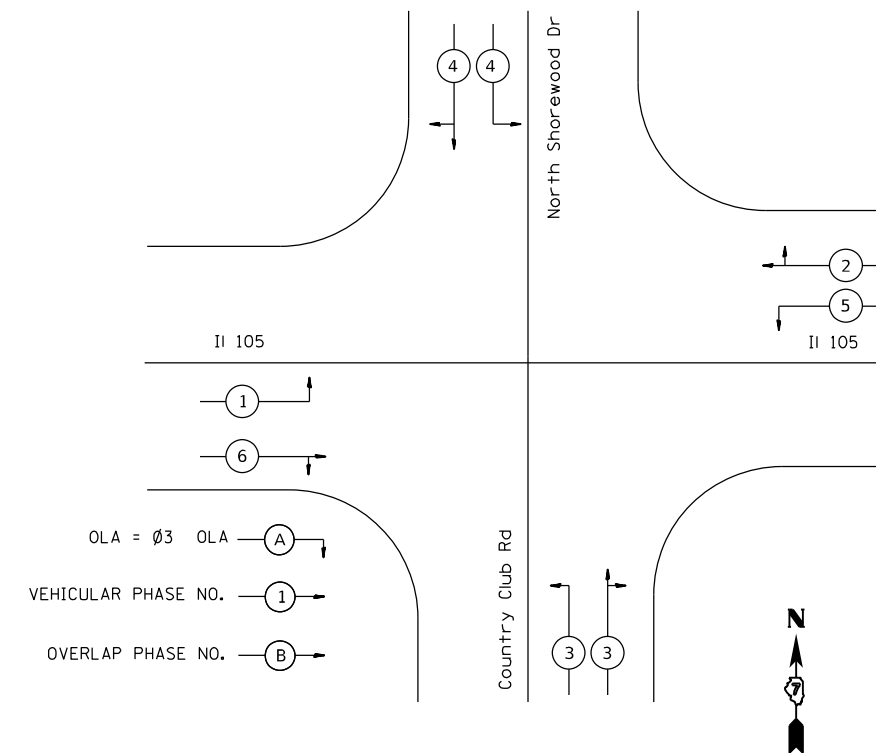
TO BE INSTALLED ON EASTBOUND MAST ARM (STA 1116+18, 46.3' R+)
TO BE INSTALLED ON WESTBOUND MAST ARM (STA 1114+27.4, 50.8' L+)

1. SIGN SHALL HAVE A BLACK REFLECTORIZED LEGEND AND BORDER ON A WHITE REFLECTORIZED BACKGROUND. ARROW IS YELLOW ON A BLACK BACKGROUND.
2. AP SHEETING.
3. SIGN TO BE INSTALLED DIRECTLY ADJACENT TO FYA SIGNAL HEAD ON MAST ARM.
4. ILLINOIS STANDARD R10-1109o SIGN.



NUMBER OF TURNS REQUIRED IN DETECTOR LOOPS

		LOOP SIZE IN (FT)				NUMBER OF TURNS	
		6 X 30		6 X 40			
		DISTANCE FROM CONTROLLER (FT)					
		0	491	0	627		
		492	982	628	1255	2 TURNS	
	0	983	1636	1256	2091	3 TURNS	
	546	1637	2455	2092	3136	4 TURNS	
	819	2456	3436			5 TURNS	
	1146					6 TURNS	
	1528					7 TURNS	
	1965					8 TURNS	
	2456					9 TURNS	
	3000					10 TURNS	



PHASE DESIGNATION DIAGRAM
ILL 105 & Country Club Rd
NO SCALE

MODEL: Default
 FILE: \\mafc-pw-bentley.com\PW\DOT\Documents\DOT Office\Director_7\Project\74902\CADD\Drawings\Drawings\74902-2-11-105-Country Club Rd.dgn

USER NAME = stefenmk	DESIGNED -	REVISED -
	DRAWN -	REVISED -
PLOT SCALE = 30,0000 * / in.	CHECKED -	REVISED -
PLOT DATE = 3/23/2022	DATE -	REVISED -

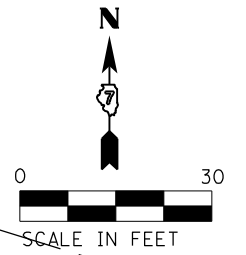
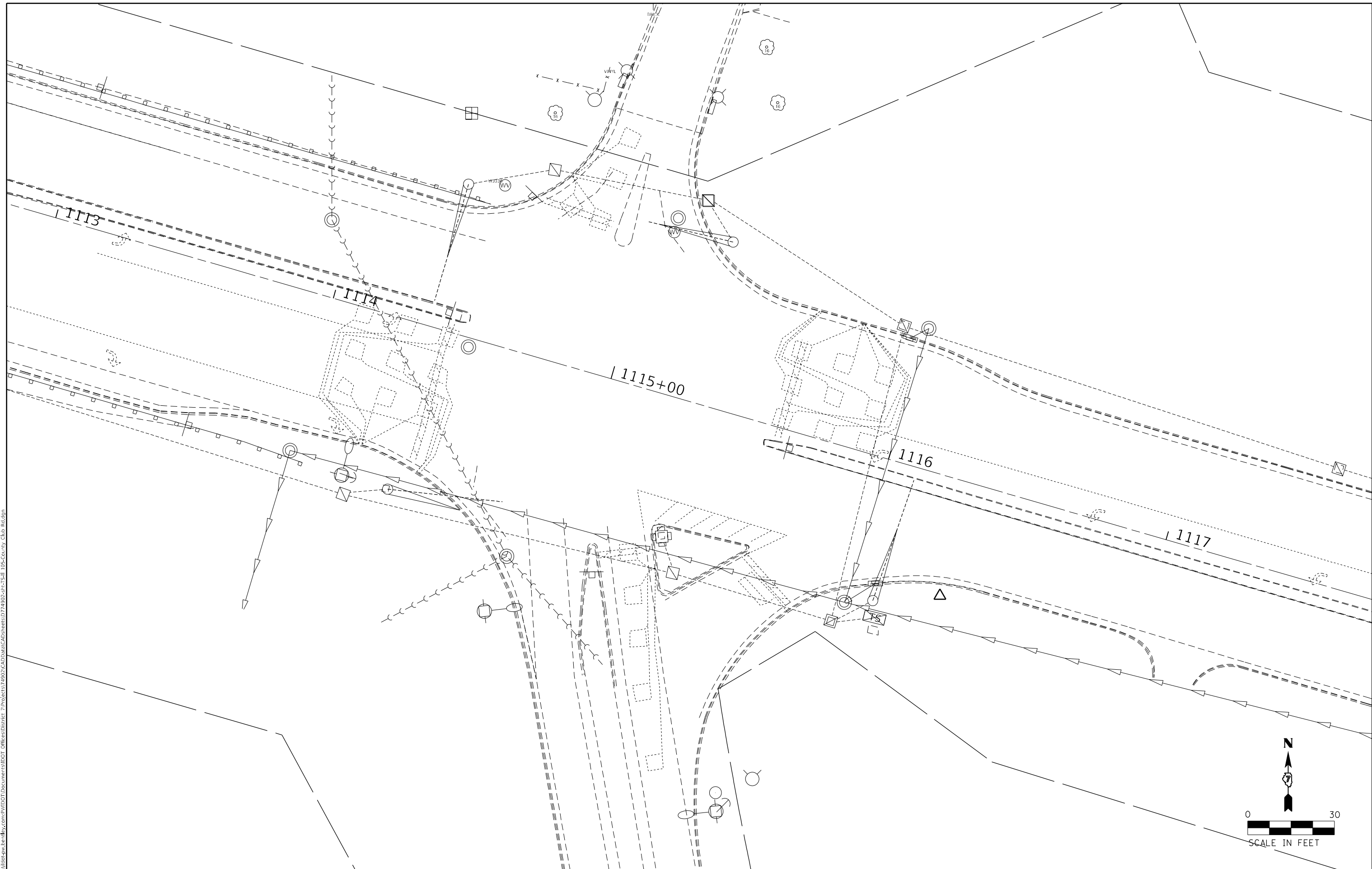
STATE OF ILLINOIS
DEPARTMENT OF TRANSPORTATION

INTERSECTION OF IL 105 & COUNTRY CLUB ROAD
DETAILS

SCALE: SHEET OF SHEETS STA. TO STA.

F.A.P. RTE.	SECTION	COUNTY	TOTAL SHEETS	SHEET NO.
741	*	Macon	12	5
CONTRACT NO. 74902				
ILLINOIS FED. AID PROJECT				

MODEL: Default
 FILE NAME: p:\ultra-cw-bead\paw.com\PIV\DOT\Documents\DOT Office\Director_7\Project\74902\CADD\DATA\CADD\sheet\0774902-eh-1S-IL 105-County Club Rd.dgn



USER NAME = steffenmk	DESIGNED -	REVISED -
	DRAWN -	REVISED -
PLOT SCALE = 30,0000 * / in.	CHECKED -	REVISED -
PLOT DATE = 3/23/2022	DATE -	REVISED -

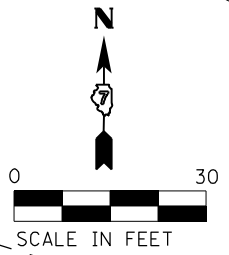
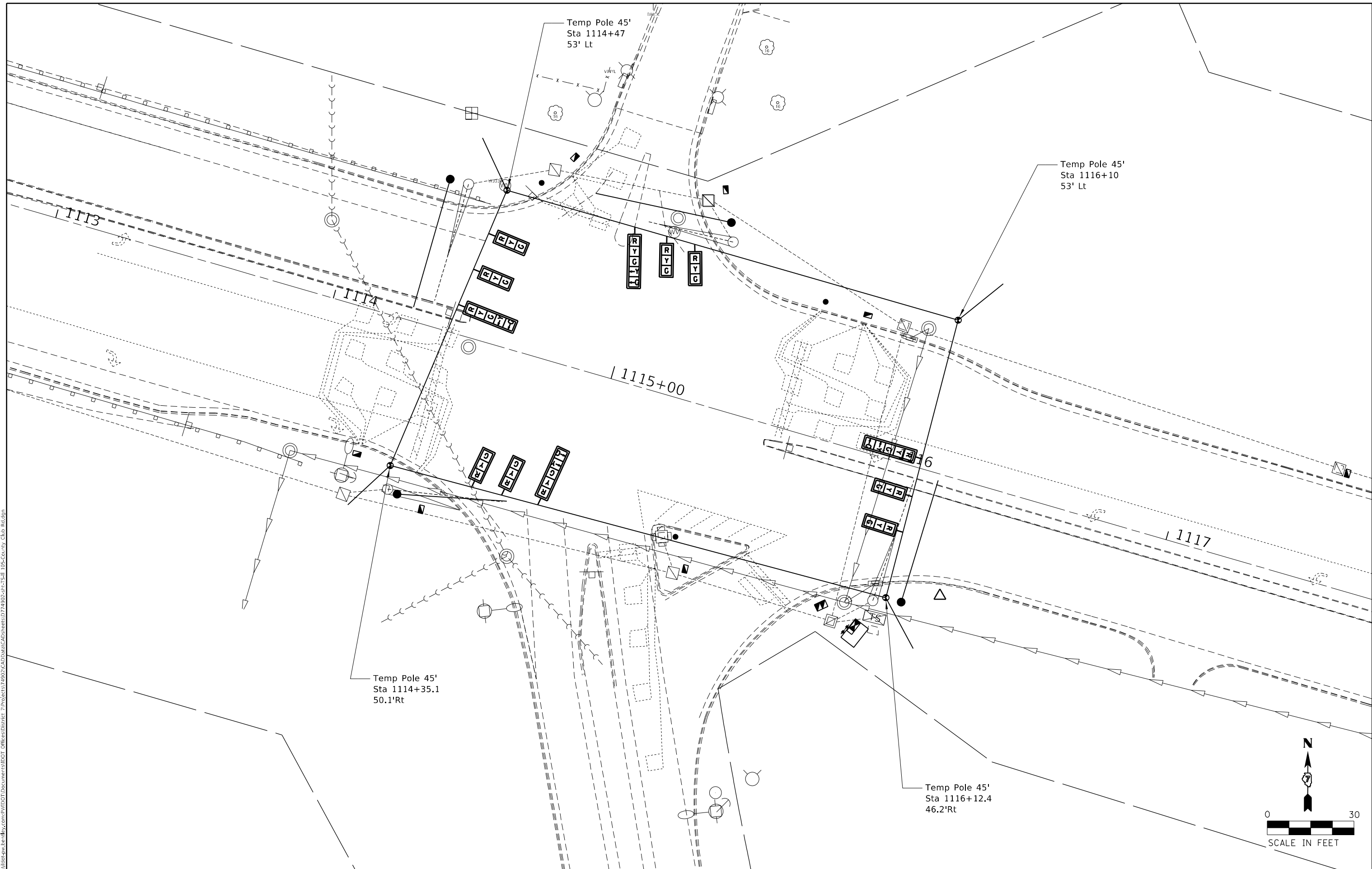
STATE OF ILLINOIS
DEPARTMENT OF TRANSPORTATION

INTERSECTION OF IL 105 & COUNTRY CLUB ROAD
EXISTING UTILITIES

SCALE: SHEET OF SHEETS STA. TO STA.

F.A.P. RTE. 741	SECTION *	COUNTY Macon	TOTAL SHEETS 12	SHEET NO. 6
CONTRACT NO. 74902				
ILLINOIS FED. AID PROJECT				

MODEL: Default
 FILE NAME: p:\project\74902\CADD\DATA\CADD\sheet\0774902-pts-115-IL-105-Country Club Rd.dgn
 PROJECT: 74902\DOT Office\Director: 7\Project\74902\CADD\DATA\CADD\sheet\0774902-pts-115-IL-105-Country Club Rd.dgn



USER NAME = steffnmk	DESIGNED -	REVISED -
	DRAWN -	REVISED -
PLOT SCALE = 30,0000 * / in.	CHECKED -	REVISED -
PLOT DATE = 3/23/2022	DATE -	REVISED -

**STATE OF ILLINOIS
 DEPARTMENT OF TRANSPORTATION**

**INTERSECTION OF IL 105 & COUNTRY CLUB ROAD
 TEMPORARY SIGNALS**

SCALE: SHEET OF SHEETS STA. TO STA.

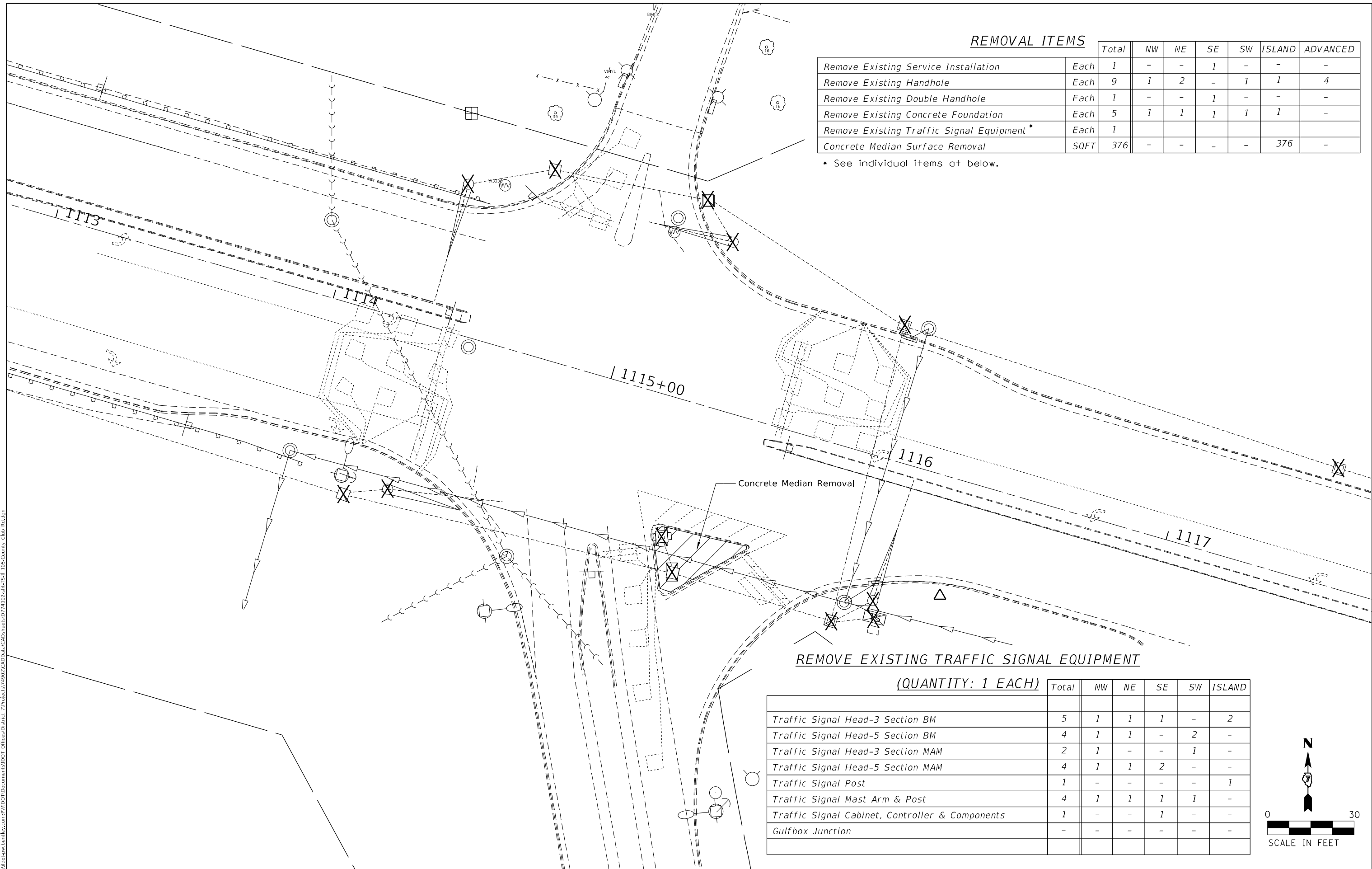
F.A.P. RTE. 741	SECTION *	COUNTY Macon	TOTAL SHEETS 12	SHEET NO. 7
CONTRACT NO. 74902				
ILLINOIS FED. AID PROJECT				

MODEL: Default
 FILE: Macon_Cad\Project\74902\DOT\Office\Director_7\Project\74902\CADD\DATA\CAD\Sheet\0774902-ph-1-15-IL-105-County_Club_Rd.dgn

REMOVAL ITEMS

	Total	NW	NE	SE	SW	ISLAND	ADVANCED
Remove Existing Service Installation	Each 1	-	-	1	-	-	-
Remove Existing Handhole	Each 9	1	2	-	1	1	4
Remove Existing Double Handhole	Each 1	-	-	1	-	-	-
Remove Existing Concrete Foundation	Each 5	1	1	1	1	1	-
Remove Existing Traffic Signal Equipment*	Each 1						
Concrete Median Surface Removal	SQFT 376	-	-	-	-	376	-

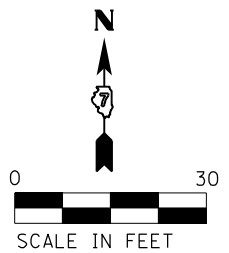
* See individual items at below.



REMOVE EXISTING TRAFFIC SIGNAL EQUIPMENT

(QUANTITY: 1 EACH)

	Total	NW	NE	SE	SW	ISLAND
Traffic Signal Head-3 Section BM	5	1	1	1	-	2
Traffic Signal Head-5 Section BM	4	1	1	-	2	-
Traffic Signal Head-3 Section MAM	2	1	-	-	1	-
Traffic Signal Head-5 Section MAM	4	1	1	2	-	-
Traffic Signal Post	1	-	-	-	-	1
Traffic Signal Mast Arm & Post	4	1	1	1	1	-
Traffic Signal Cabinet, Controller & Components	1	-	-	1	-	-
Gulfbox Junction	-	-	-	-	-	-



USER NAME = steffenmk	DESIGNED -	REVISED -
PLOT SCALE = 30,0000 * / in.	DRAWN -	REVISED -
PLOT DATE = 3/23/2022	CHECKED -	REVISED -
	DATE -	REVISED -

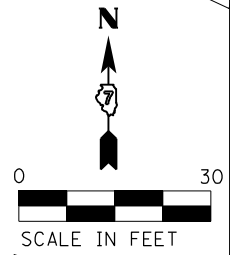
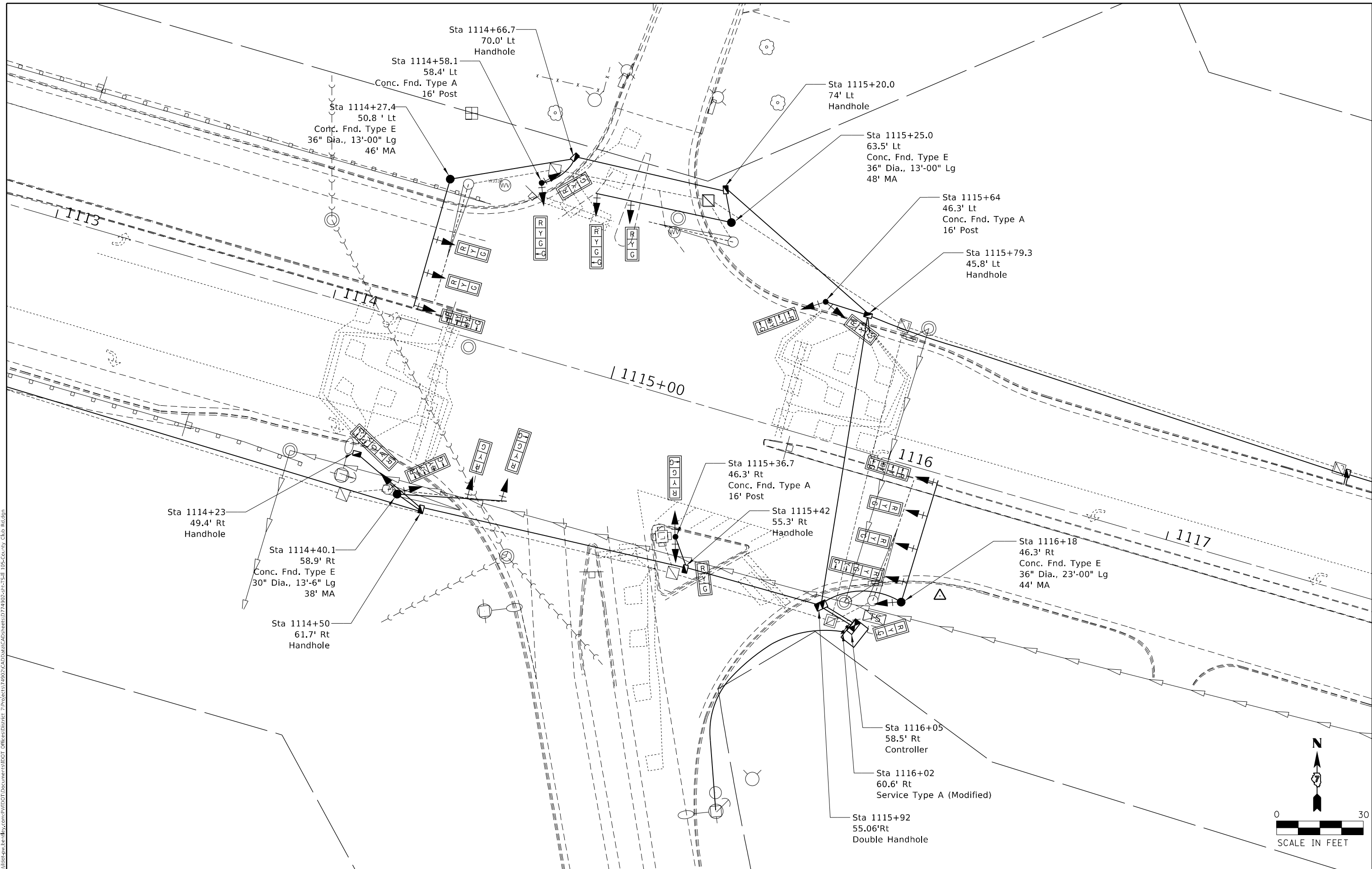
**STATE OF ILLINOIS
DEPARTMENT OF TRANSPORTATION**

**INTERSECTION OF IL 105 & COUNTRY CLUB ROAD
REMOVAL ITEMS**

SCALE: SHEET OF SHEETS STA. TO STA.

F.A.P. RTE. 741	SECTION *	COUNTY Macon	TOTAL SHEETS 12	SHEET NO. 8
CONTRACT NO. 74902				
ILLINOIS FED. AID PROJECT				

MODEL: Default
 FILE: \\macon\p\uldrick\aw_bec\p\p\DOT\Documents\DOT\Office\Dir\dr_7\Project\174902\CADD\Drawn\CAD\Drawn\105-Country Club Rd.dwg
 PROJECT: 174902



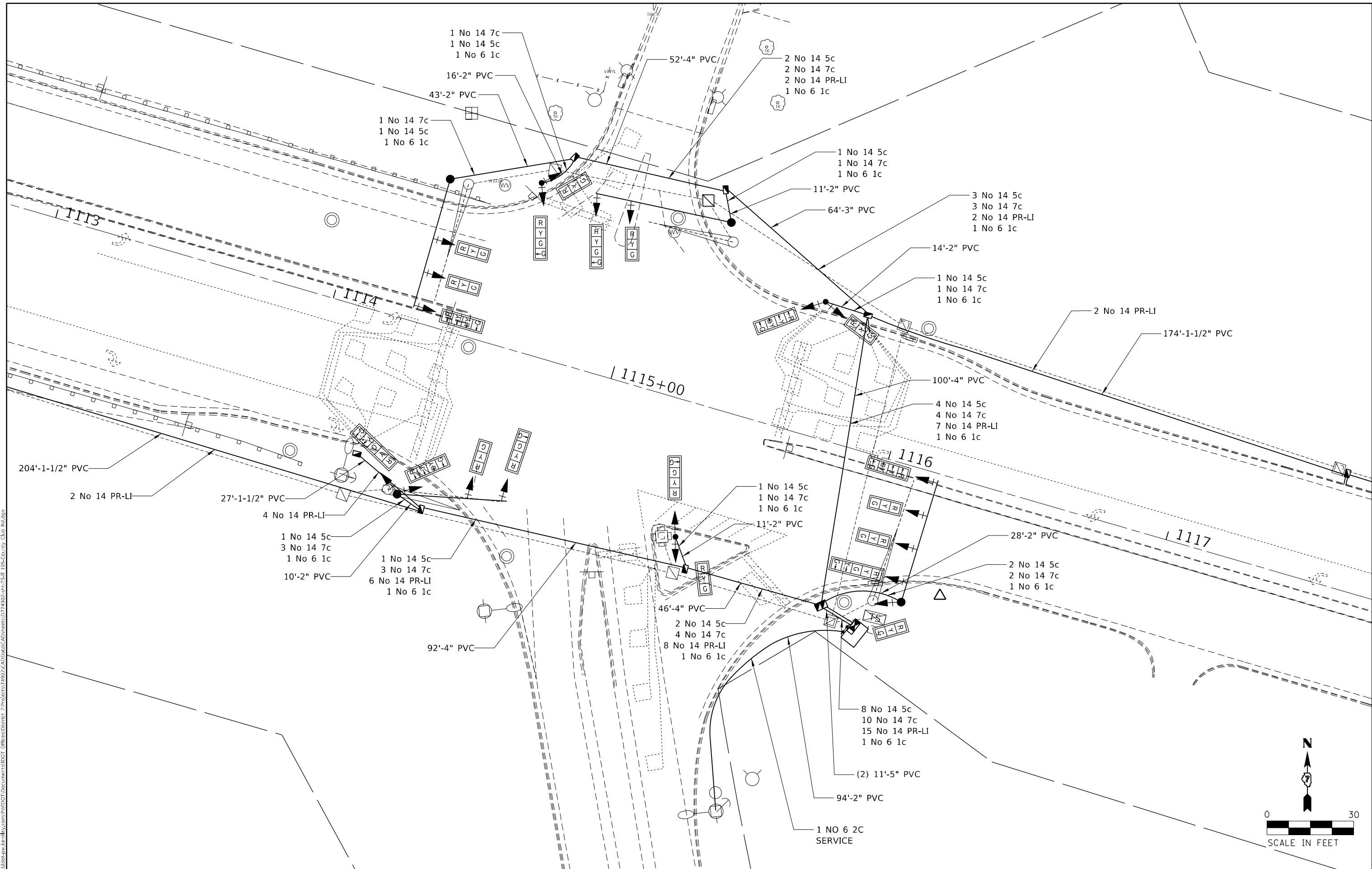
USER NAME = bakeral	DESIGNED -	REVISD -
	DRAWN -	REVISED -
PLOT SCALE = 30,0000 * / in.	CHECKED -	REVISED -
PLOT DATE = 4/23/2022	DATE -	REVISED -

**STATE OF ILLINOIS
 DEPARTMENT OF TRANSPORTATION**

INTERSECTION OF IL 105 & COUNTRY CLUB ROAD	
SIGNAL LAYOUT	
SCALE:	SHEET OF SHEETS STA. TO STA.

F.A.P. RTE.	SECTION	COUNTY	TOTAL SHEETS	SHEET NO.
741	*	Macon	12	9
CONTRACT NO. 74902				
ILLINOIS FED. AID PROJECT				

MODEL: Default
 FILE: \\macon\pwworkspace\ben.fay.com\PIV\DOT\Documents\DOT Office\Director_7\Project\74902\CADD\Sheet\74902-2-11-25-IL 105-Country Club Rd.dgn



USER NAME = steffnmk	DESIGNED -	REVISED -
DRAWN -	REVISED -	
PLOT SCALE = 30,0000 * / in.	CHECKED -	REVISED -
PLOT DATE = 3/23/2022	DATE -	REVISED -

STATE OF ILLINOIS
DEPARTMENT OF TRANSPORTATION

INTERSECTION OF IL 105 & COUNTRY CLUB ROAD
CABLE LAYOUT

F.A.P. RTE.	SECTION	COUNTY	TOTAL SHEETS	SHEET NO.
741	*	Macon	12	10
CONTRACT NO. 74902				
ILLINOIS FED. AID PROJECT				

SCALE: SHEET OF SHEETS STA. TO STA.



Illinois Department
of Transportation
Division of Highways
IDOT D7

SOIL BORING LOG

Date 3/15/22

ROUTE FAP 741 (IL 105) DESCRIPTION IL 105 and Country Club Road LOGGED BY E. Sandschafer
D7 Signal Modernization
 SECTION 2019-2 LOCATION Southwest Quadrant, SEC. 9, TWP. 16N, RNG. 3E, 3rd PM,
Latitude N 39.851256, Longitude W 88.878644
 COUNTY Macon DRILLING METHOD Hollow stem auger & split spoon HAMMER Auto ETR = 91.8% @ 57.4 bpm

STRUCT. NO. Station	D E P T H (ft)	B L O W S (/6")	U C S (tsf)	M O I S T (%)	Surface Water Elev. Stream Bed Elev.	ft	D E P T H (ft)	B L O W S (/6")	U C S (tsf)	M O I S T (%)
Traffic Signal 1114+40.1					N/A	ft				
BORING NO. B-1 SW Quadrant Station 1114+36 Offset 50.0 ft RT Ground Surface Elev. 632.10					N/A	ft				
Topsoil					Very loose, moist, dark grey, fine-grained, SAND with PEAT	611.10		1 2		27
Brown, SANDY CLAY Medium, moist		1 3	0.8 B	14	Benchmark: Mast Arm Foundation at Northeast Quadrant of Intersection, Elevation = 635.49 ft. End of Boring					
Very stiff	-5	1 3 4	2.3 B	14			-25			
625.10										
Stiff, moist, brown, CLAY with SAND		2 4 5	1.8 B	15						
622.60										
Stiff, moist, grey, CLAY	-10	2 2 5	2.0 B	16			-30			
		2 2 5	2.0 B	16						
		2 6	1.4 B	15			-35			
615.10										
Stiff, moist, grey, CLAY LOAM		2 6	1.4 B	15						
612.60										
612.10	-20	0					-40			

The Unconfined Compressive Strength (UCS) Failure Mode is indicated by (B-Bulge, S-Shear, P-Penetrometer, E-Estimated)
 The SPT (N value) is the sum of the last two blow values in each sampling zone (AASHTO T206), WH-Weight of Hammer,
 NT-Not Tested.

BBS, form 137 (Rev. 8-99)



Illinois Department
of Transportation
Division of Highways
IDOT D7

SOIL BORING LOG

Date 3/15/22

ROUTE FAP 741 (IL 105) DESCRIPTION IL 105 and Country Club Road LOGGED BY E. Sandschafer
D7 Signal Modernization
 SECTION 2019-2 LOCATION Southeast Quadrant, SEC. 9, TWP. 16N, RNG. 3E, 3rd PM,
Latitude N 39.851140, Longitude W 88.878040
 COUNTY Macon DRILLING METHOD Hollow stem auger & split spoon HAMMER Auto ETR = 91.8% @ 57.4 bpm

STRUCT. NO. Station	D E P T H (ft)	B L O W S (/6")	U C S (tsf)	M O I S T (%)	Surface Water Elev. Stream Bed Elev.	ft	D E P T H (ft)	B L O W S (/6")	U C S (tsf)	M O I S T (%)
Traffic Signal 1116+18					N/A	ft				
BORING NO. B-2 SE Quadrant Station 1116+22 Offset 41.0 ft RT Ground Surface Elev. 636.59					N/A	ft				
Topsoil					Very stiff, moist, grey, CLAY	615.59		2 4	2.1 B	17
Benchmark: Mast Arm Foundation at Northeast Quadrant of Intersection, Elevation = 635.49 ft. End of Boring										
Medium, moist, dark grey		1 4	0.6 B	19						
Brown, SAND		3								
632.09										
Soft, wet, brown & dark grey marbled, SILTY CLAY LOAM	-5	1 1	0.3 B	17			-25			
629.59										
Very soft, wet, brown, SANDY LOAM		1 5	0.2 B	25						
627.09										
Very soft, wet, grey, SILT	-10	2 2	0.2 B	25			-30			
		2 5	0.4 B	28						
622.09										
Medium, moist, grey, SILTY CLAY	-15	1 2 3	1.0 B	22			-35			
		1 2 5	2.5 B	21						
Very stiff										
617.09										
616.59	-20	2					-40			

The Unconfined Compressive Strength (UCS) Failure Mode is indicated by (B-Bulge, S-Shear, P-Penetrometer, E-Estimated)
 The SPT (N value) is the sum of the last two blow values in each sampling zone (AASHTO T206), WH-Weight of Hammer,
 NT-Not Tested.

BBS, form 137 (Rev. 8-99)

MODEL: Default
FILE: \\nafe.pva\idirect-pw-benefits.com\PI\IDOT\Documents\IDOT\Office\Director_7\Projects\74902\CADD\Drawings\74902-eh-15-IL 105-Country Club Rd.dgn
SOIL BORING 058-0000 CONTRACT #74902 IL 105 & COUNTRY CLUB RD.GPJ IL_DOT.GDT 3/22/22

MODEL: Default
FILE: \\nafe.pva\idirect-pw-benefits.com\PI\IDOT\Documents\IDOT\Office\Director_7\Projects\74902\CADD\Drawings\74902-eh-15-IL 105-Country Club Rd.dgn
SOIL BORING 058-0000 CONTRACT #74902 IL 105 & COUNTRY CLUB RD.GPJ IL_DOT.GDT 3/22/22

USER NAME = stefenmk	DESIGNED -	REVISED -
	DRAWN -	REVISED -
PLOT SCALE = 30,0000 */ in.	CHECKED -	REVISED -
PLOT DATE = 3/23/2022	DATE -	REVISED -

STATE OF ILLINOIS
DEPARTMENT OF TRANSPORTATION

INTERSECTION OF IL 105 & COUNTRY CLUB ROAD
BORING LOGS

SCALE: SHEET OF SHEETS STA. TO STA.

F.A.P. RTE.	SECTION	COUNTY	TOTAL SHEETS	SHEET NO.
741	*	Macon	12	12
CONTRACT NO. 74902				
ILLINOIS FED. AID PROJECT				