

ROAD CLASSIFICATION: MAJOR COLLECTOR
DESIGN SPEED: 50 M.P.H.

06-17-2022 LETTING ITEM 142

STATE OF ILLINOIS

DEPARTMENT OF TRANSPORTATION

DIVISION OF HIGHWAYS

PLANS FOR PROPOSED ROADWAY IMPROVEMENTS

CH 14 Creek Nation Blacktop

Franklin County, Illinois

Section 19-00188-00-RS

Project H181(597)

Job C-99-044-20

ROUTE	SECTION	COUNTY	SHEET NO.
CH 14	19-00188-00-RS	FRANKLIN	1 OF 7

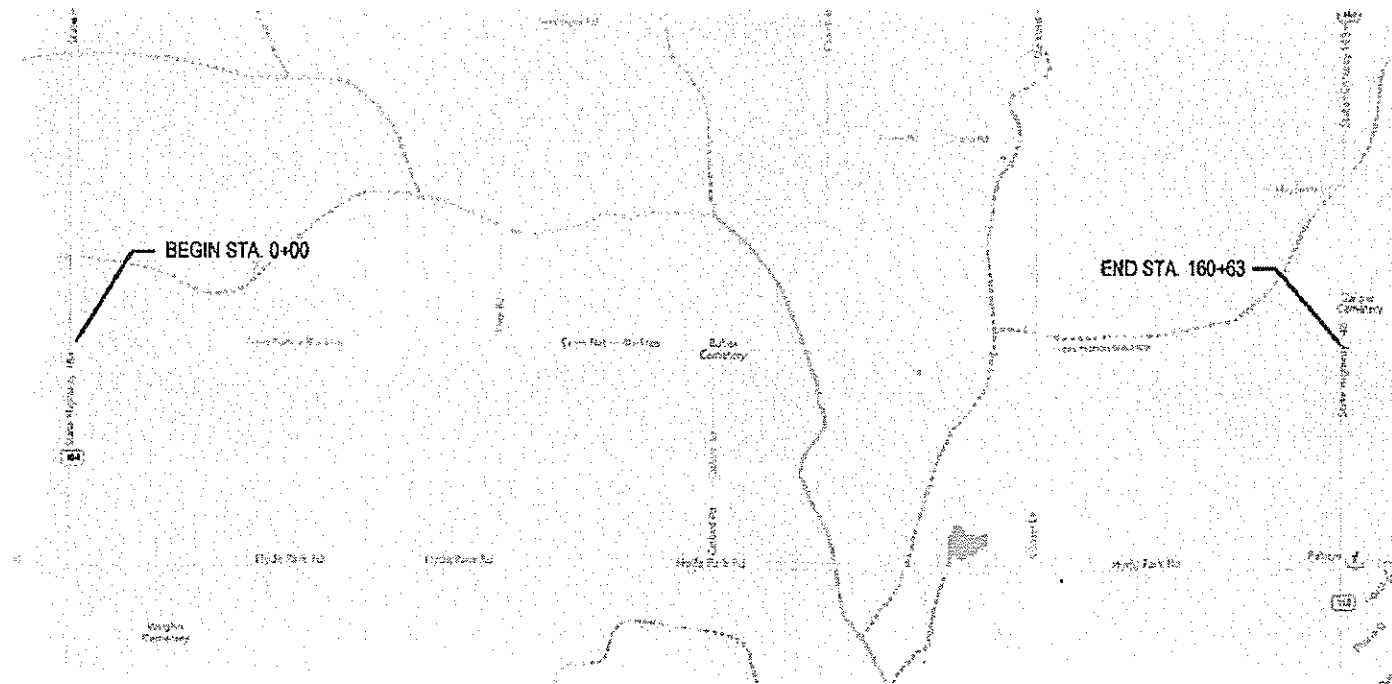
CONTRACT 99682

ADT:
(2021) = 450
(2041) = 630
PC = 554
SU = 44
MU = 32
DHV₂₀ = 63

SHEET NO.	TITLE
1	COVER SHEET AND SUMMARY OF QUANTITIES
2	MISCELLANEOUS DETAILS AND TYPICAL SECTIONS
3	MISCELLANEOUS DETAILS
4-7	PLAN

STANDARDS

701006-05
701301-04
701306-04
701311-03
701901-08
780001-05
BLR 24-2



LOCATION MAP

NET LENGTH = 3.04 miles (16063 Feet)

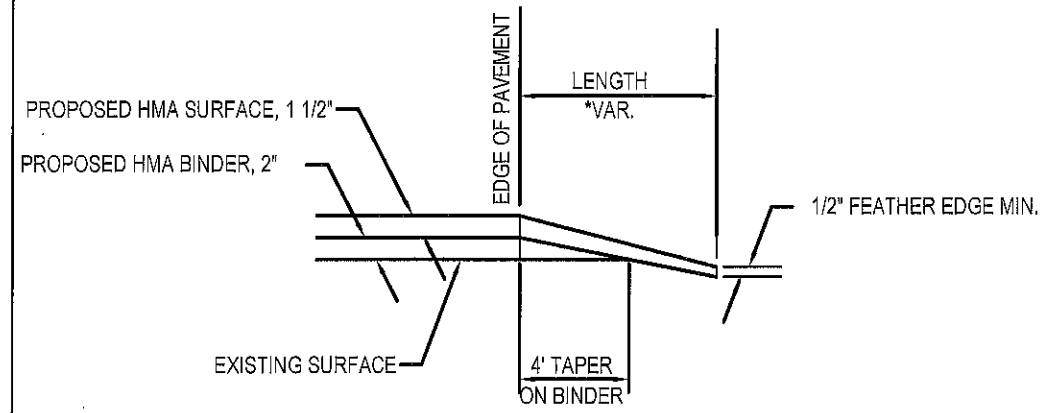
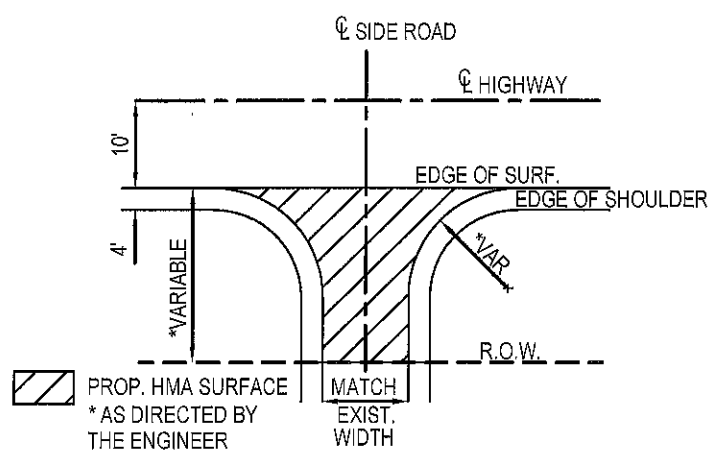


SUMMARY OF QUANTITIES			
CODE NO.	PAY ITEM	UNIT	TOTAL
40200800	AGGREGATE SURFACE COURSE, TYPE B	TON	66
40600275	BITUMINOUS MATERIALS (PRIME COAT)	POUND	98,840
40600982	HOT-MIX ASPHALT SURFACE REMOVAL	SQ YD	431
	-BUTT JOINT		
40603085	HOT-MIX ASPHALT BINDER COURSE,	TON	4,700
	IL 19.0, N70		
40604052	HOT-MIX ASPHALT SURFACE COURSE, IL9.5,	TON	3,700
	MIX "C", N70		
48100100	AGGREGATE SHOULDERS, TYPE A	TON	3,700
67100100	MOBILIZATION	L SUM	1
70100460	TRAFFIC CONTROL AND PROTECTION	L SUM	1
	STANDARD 701306		
70300100	SHORT-TERM PAVEMENT MARKING	FOOT	3,205
Δ78001110	PAINT PAVEMENT MARKING - LINE 4"	FOOT	36,702
X4401198	HOT MIX ASPHALT SURFACE REMOVAL	SQ YD	1,412
	ΔSPECIALTY ITEM		

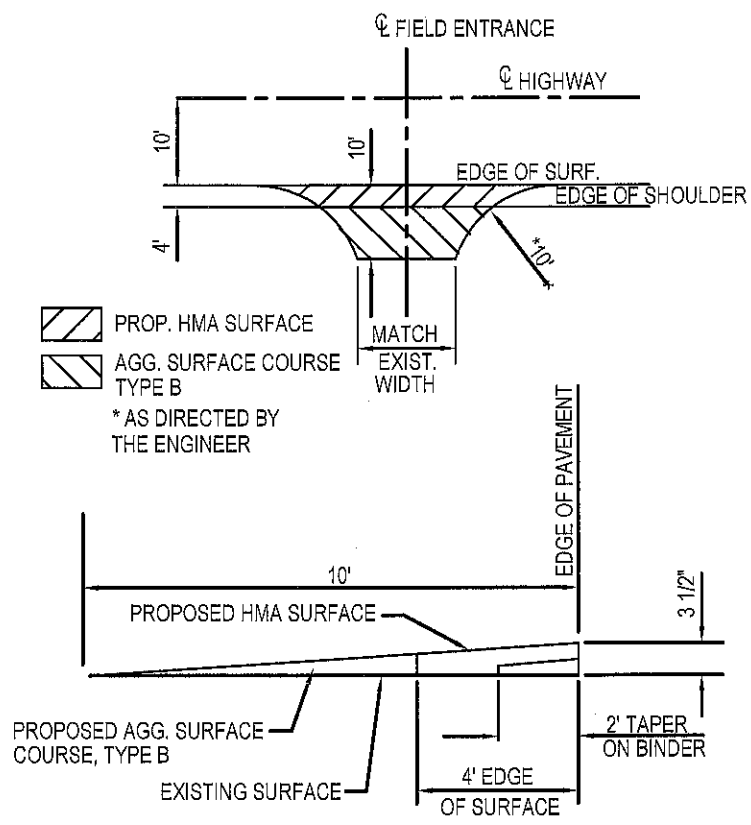
STATE OF ILLINOIS DEPARTMENT OF TRANSPORTATION	
APPROVED	<i>[Signature]</i> 3/27/2022
FRANKLIN COUNTY HIGHWAY ENGINEER	
PASSED	3/29/22 <i>[Signature]</i>
DISTRICT 5 ENGINEER OF LOCAL ROADS & STREETS	
RELEASING FOR BID	
BASED ON LIMITED REVIEW	3/29/22 <i>[Signature]</i>
DEPUTY DIRECTOR OF HIGHWAYS, REGION 5 ENGINEER	

MICHAEL A. ROLLA
062-056332
LICENSED
PROFESSIONAL
ENGINEER
OF
ILLINOIS

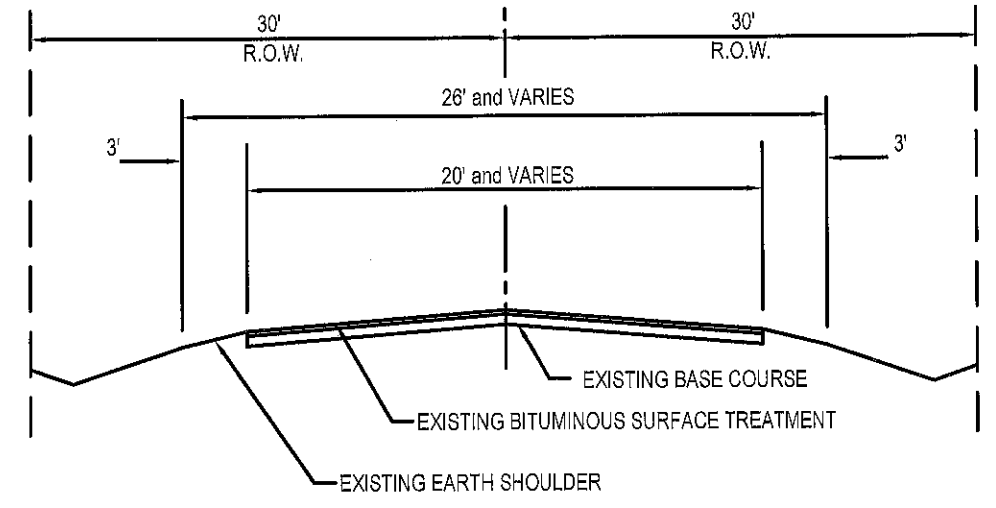
[Signature]
MICHAEL A. ROLLA
ILLINOIS REGISTERED PROFESSIONAL ENGINEER
#062-056332
LIC. EXPIRES 11/30/2023



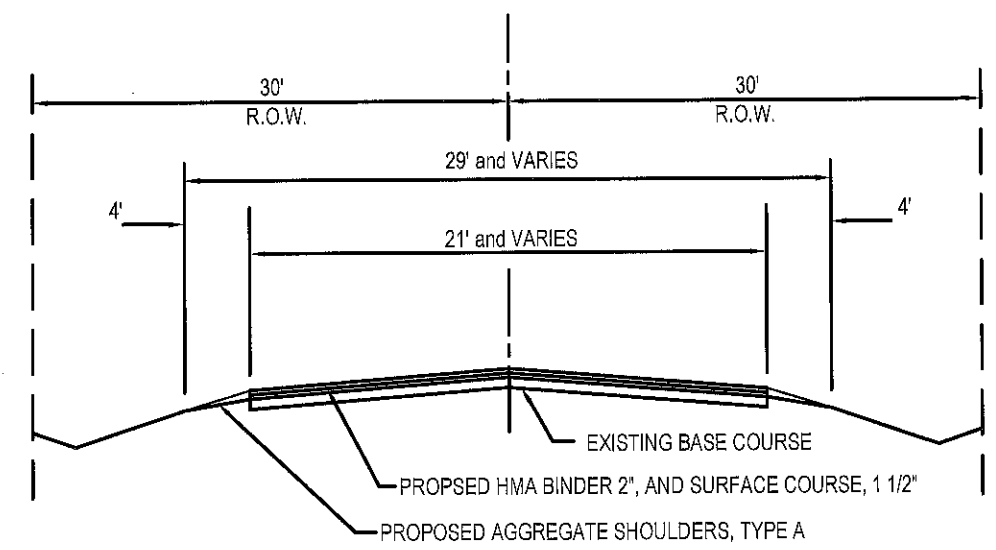
SIDEROAD DETAILS



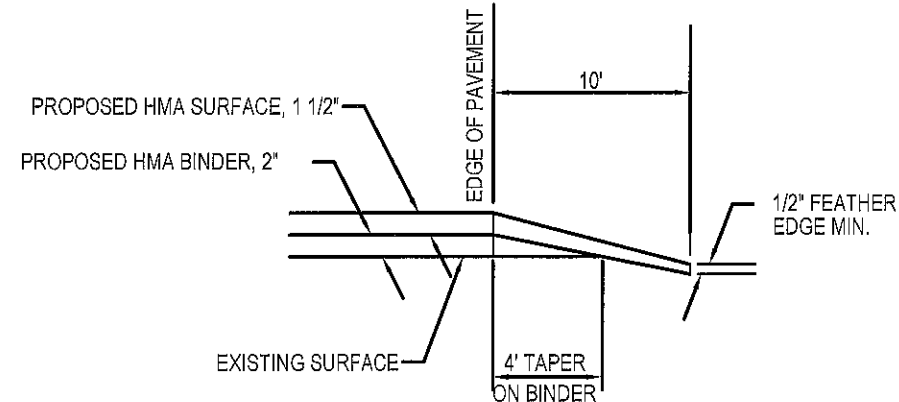
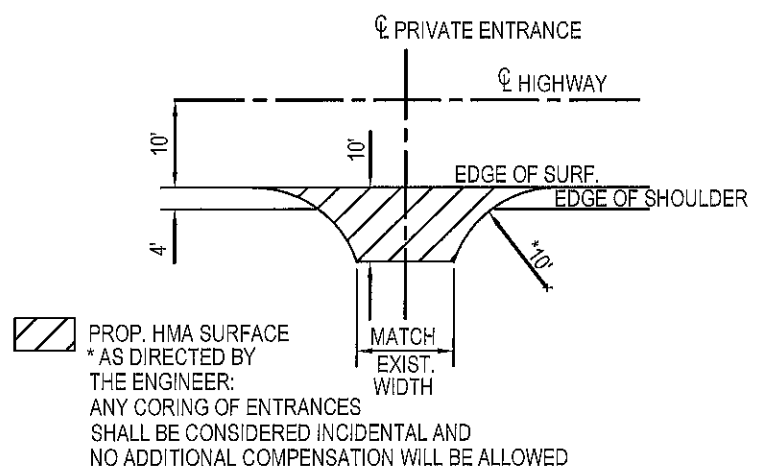
FIELD ENTRANCE DETAILS



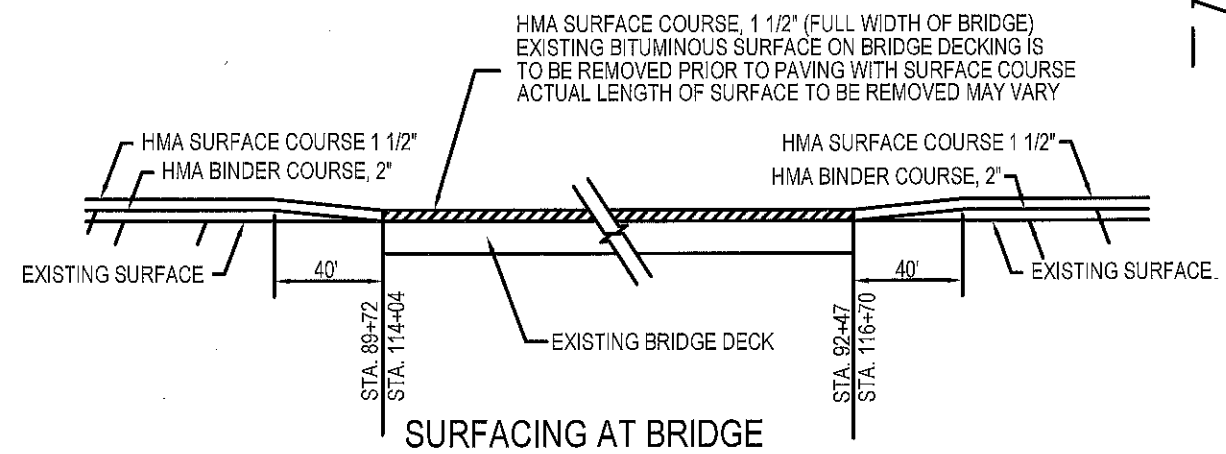
TYPICAL EXISTING SECTION



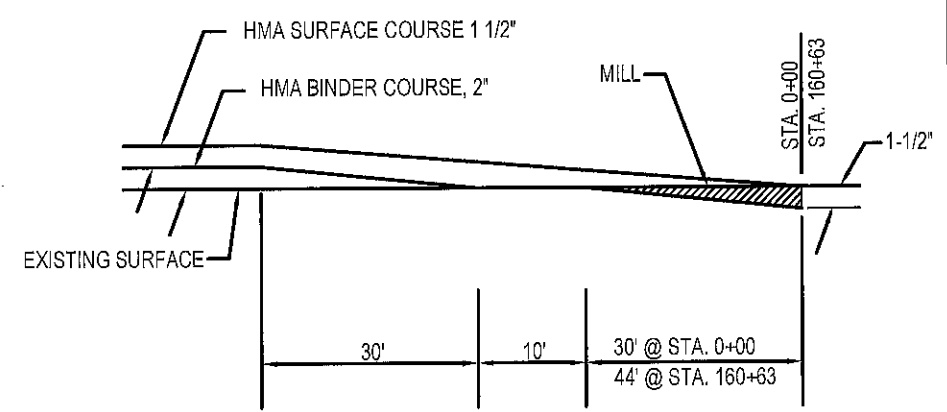
TYPICAL PROPOSED SECTION



PRIVATE ENTRANCE DETAILS



SURFACING AT BRIDGE



BUTT JOINT

MISCELLANEOUS DETAILS & TYPICAL SECTIONS

FIELD ENTRANCE QUANTITIES

ENTRANCES	AGGREGATE SURFACE COURSE TYPE B, TON	HOT MIX ASPHALT SURFACE COURSE, MIX "C", N70, TON
ONE (1) ENTRANCE	3	1
TOTAL = 22 ENTRANCES	66	22

MAILBOX TURNOUT QUANTITIES

TURNOUT	BITUMINOUS MATERIALS (PRIME COAT) GALLON	HOT MIX ASPHALT SURFACE COURSE, MIX "C", N70, TON
ONE (1) TURNOUT	3.5	1
TOTAL = 35 TURNOUTS	122.5	35

PRIVATE ENTRANCE QUANTITIES

ENTRANCES	BITUMINOUS MATERIALS (PRIME COAT) GALLON	HOT MIX ASPHALT SURFACE COURSE, MIX "C", N70, TON
ONE (1) ENTRANCE	5.5	2.5
TOTAL = 48 ENTRANCES	264	120

SIDEROAD QUANTITIES

ENTRANCES	BITUMINOUS MATERIALS (PRIME COAT) GALLON	HOT MIX ASPHALT SURFACE COURSE, MIX "C", N70, TON
STA. 53+95 LT	47	13
STA. 53+95 RT	47	7
STA. 81+15 RT	47	8
STA. 94+46 LT	47	14
STA. 121+28 LT	47	15
TOTAL = 5 ENTRANCES	235	57

SCHEDULE OF PAVEMENT MARKING LINE, 4"

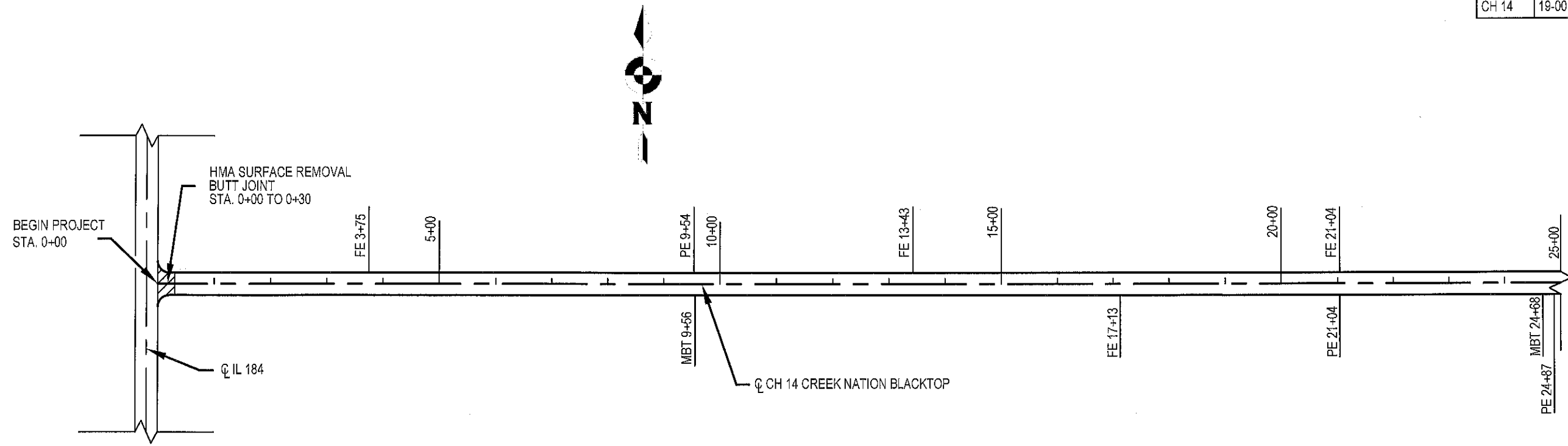
EASTBOUND LANE			WESTBOUND LANE				
STATION	NO PASSING (YELLOW SOLID)	PASSING (YELLOW DASHED)	STATION	NO PASSING (YELLOW SOLID)	PASSING (YELLOW DASHED)	STATION	EDGE LINE (WHITE SOLID)
0+00 TO 39+00		975				0+00 TO 160+63	31786
39+00 TO 43+00	400		39+00 TO 43+00		100		
43+00 TO 48+13		128	48+13 TO 51+63	350			
48+13 TO 51+63		88	144+50 TO 146+00		38		
51+63 TO 144+50		2322					
144+50 TO 146+00	150						
146+00 TO 160+63		366					
	550	3879		350	138		
TOTAL YELLOW			4917			TOTAL WHITE	31786

MILLING SCHEDULE

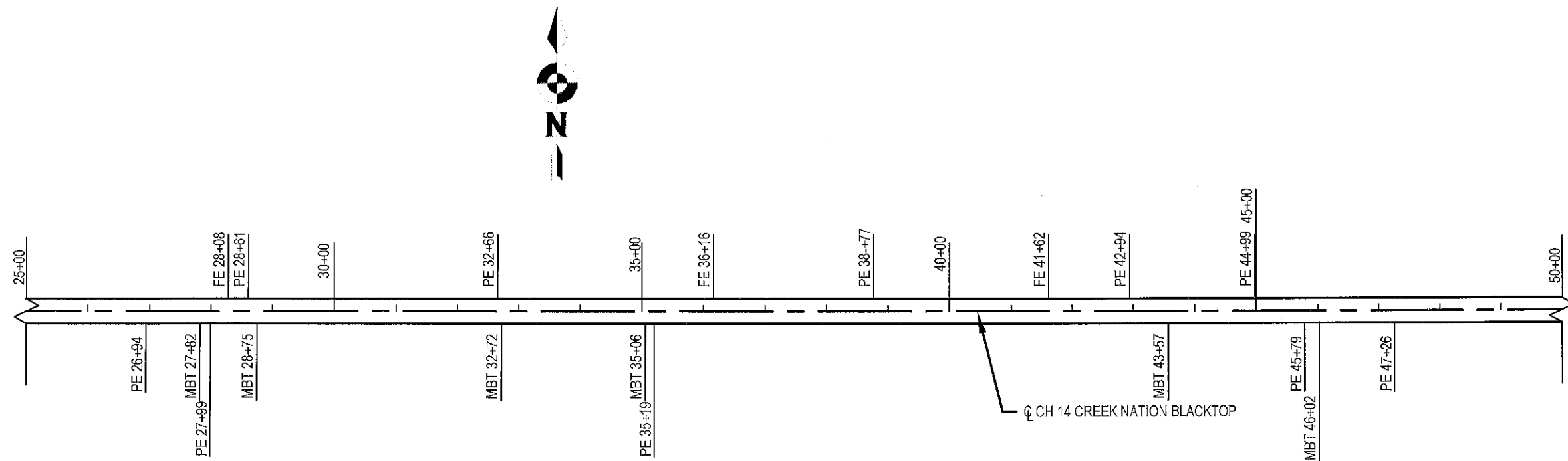
STATION	TYPE	COLD MILLING
0+00 TO 0+30	BUTT JT	161
160+19 TO 160+63	BUTT JT	269
89+72 TO 92+47	VARIABLE DEPTH	703
114+04 TO 116+70	VARIABLE DEPTH	709
TOTAL		1842

SCALE 1" = 200'

ROUTE	SECTION	COUNTY	SHEET NO.
CH 14	19-00188-00-RS	FRANKLIN	4 OF 7
CONTRACT 99682			



SCALE 1" = 200'

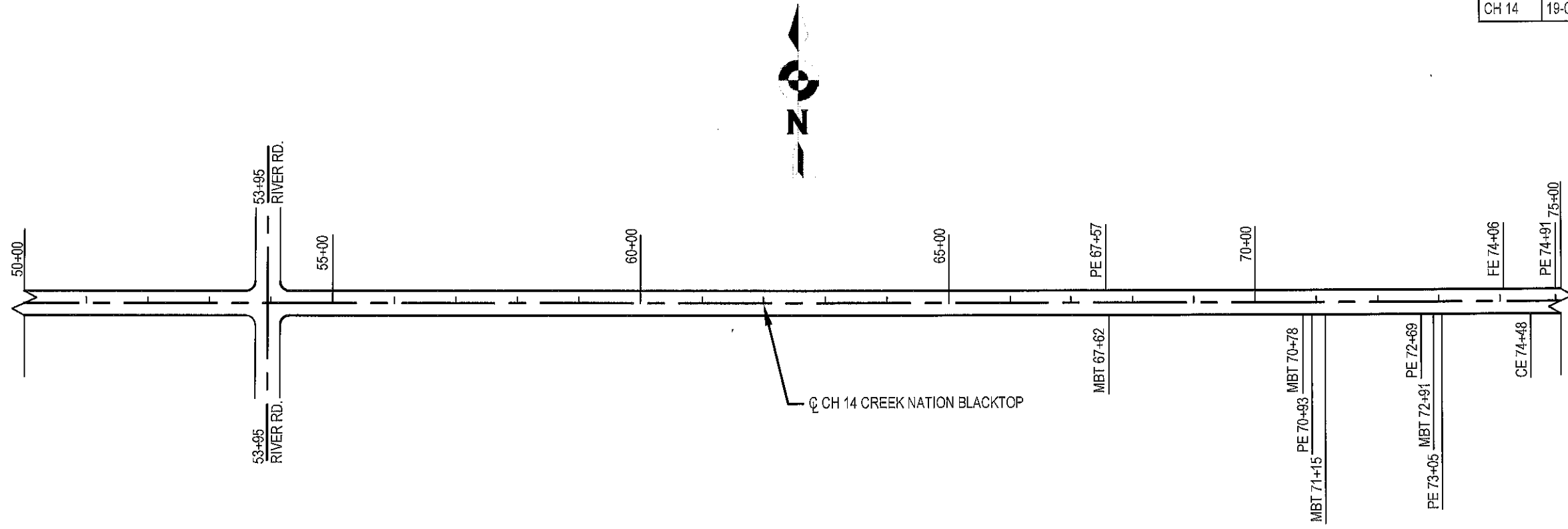


PLAN
STATION 0+00 TO 50+00

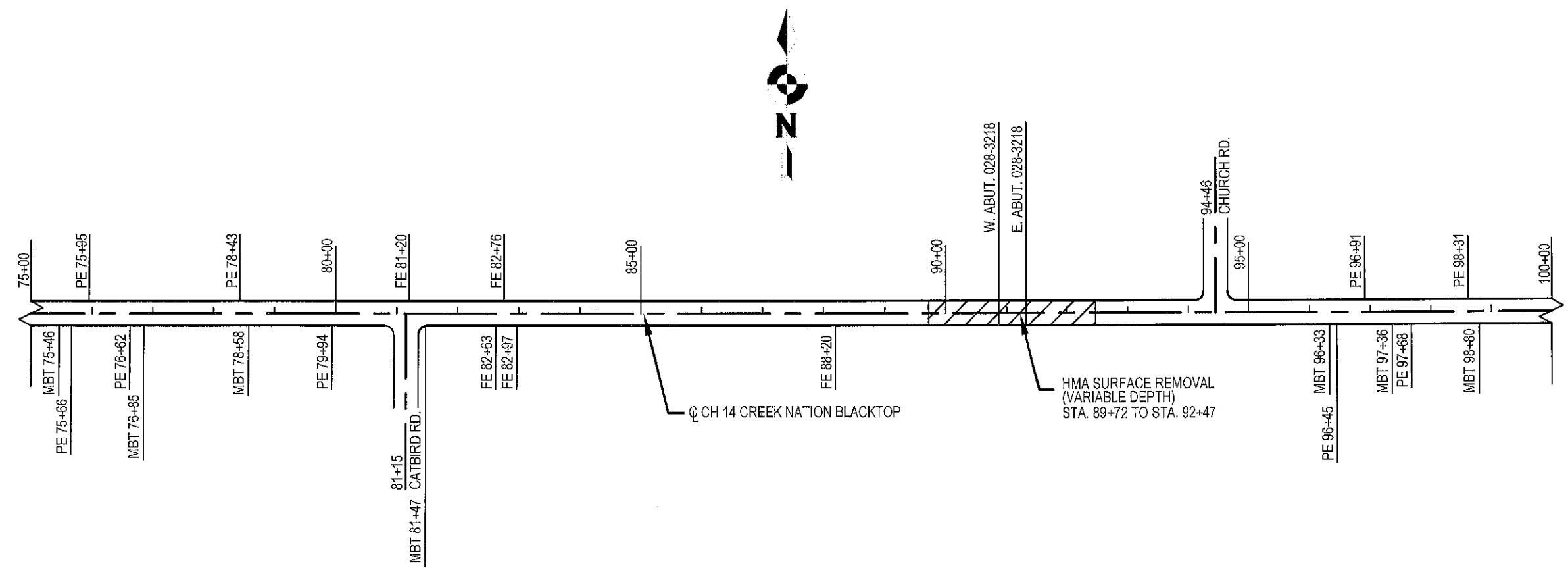
SCALE 1" = 200'

ROUTE	SECTION	COUNTY	SHEET NO.
CH 14	19-00188-00-RS	FRANKLIN	5 OF 7

CONTRACT 99682



SCALE 1" = 200'

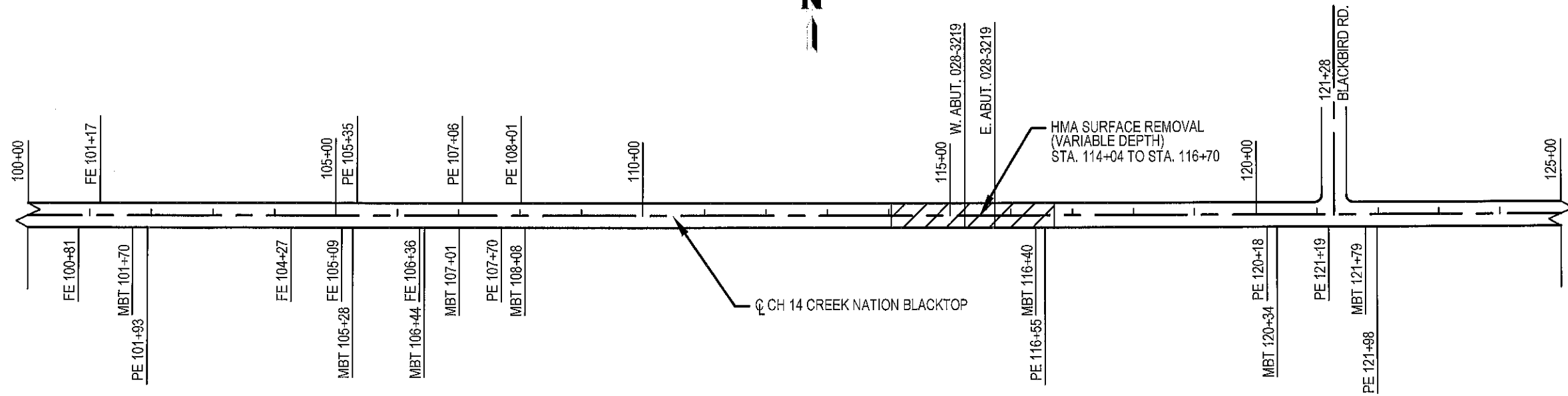


PLAN
STATION 50+00 TO 100+00

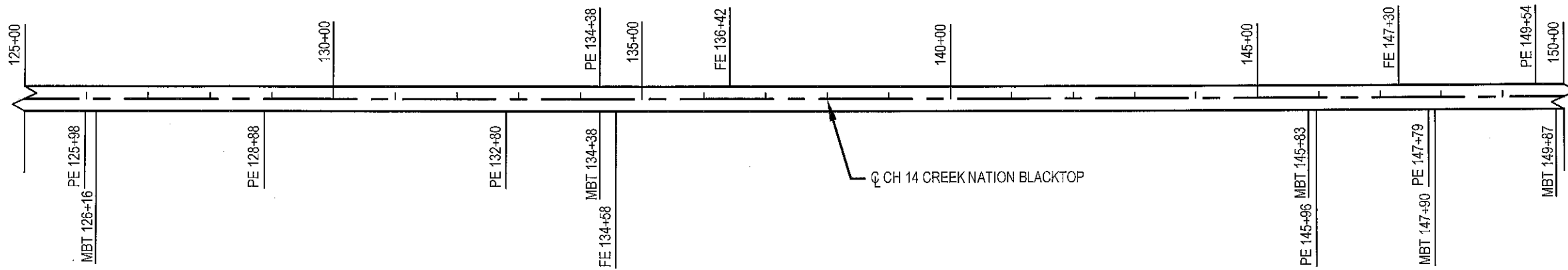
SCALE 1" = 200'

ROUTE	SECTION	COUNTY	SHEET NO.
CH 14	19-00188-00-RS	FRANKLIN	6 OF 7

CONTRACT 99682



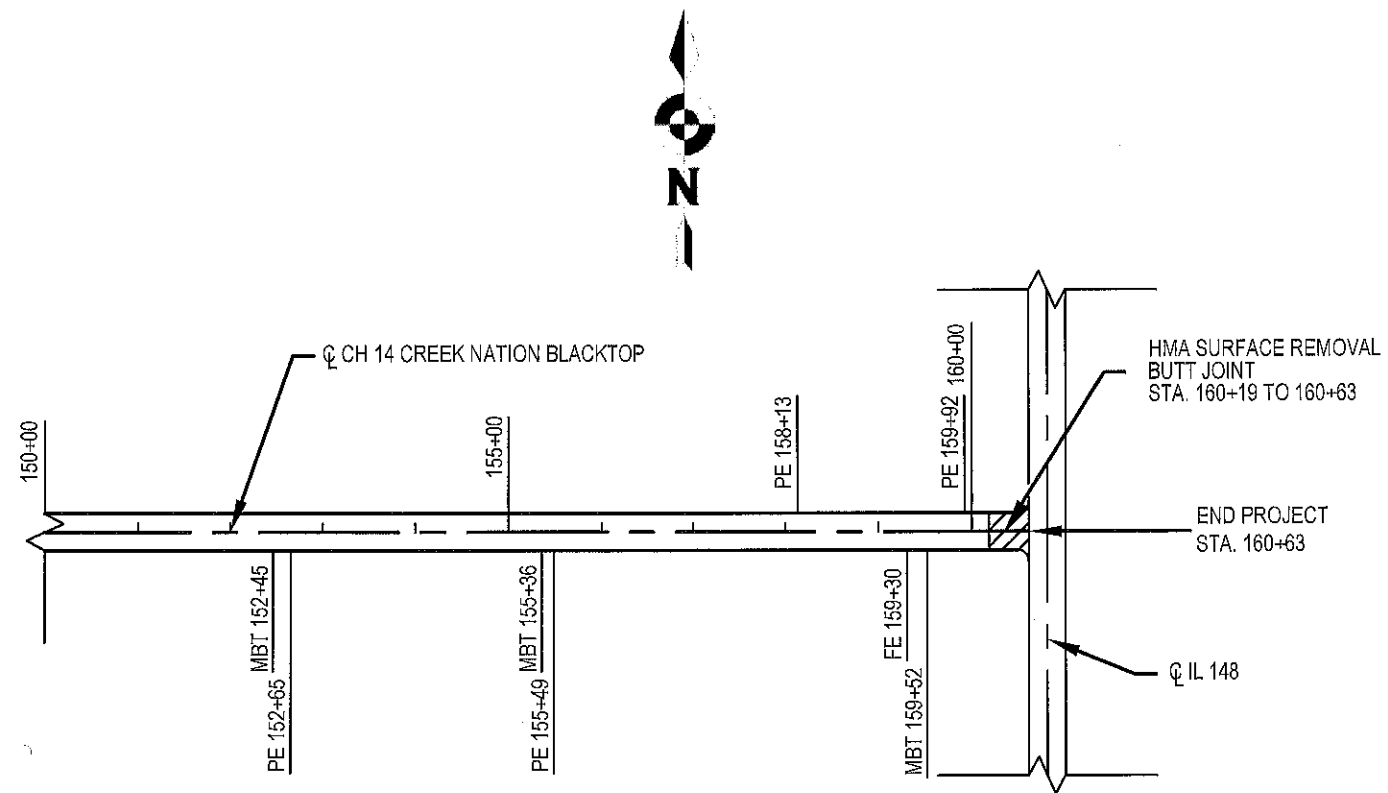
SCALE 1" = 200'



PLAN
STATION 100+00 TO 150+00

SCALE 1" = 200'

ROUTE	SECTION	COUNTY	SHEET NO.
CH 14	19-00188-00-RS	FRANKLIN	7 OF 7
CONTRACT 99682			



PLAN
STATION 150+00 TO 160+63