

STATE OF ILLINOIS
DEPARTMENT OF TRANSPORTATION

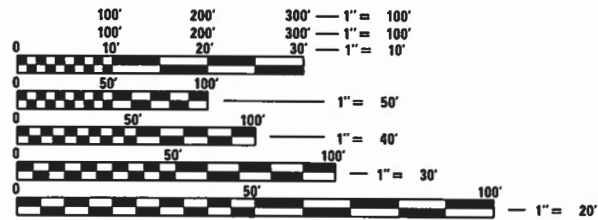
F.A.S. RTE.	SECTION	COUNTY	TOTAL SHEETS	SHEET NO.
364	16-00091-02-RR	WOODFORD	24	1
		ILLINOIS	CONTRACT NO. 89812	

INDEX OF SHEETS, SEE SHEET NO. 2
LIST OF STANDARDS, SEE SHEET NO. 2

PROPOSED IMPROVEMENT - THIS PROJECT CONSISTS OF THE RECONSTRUCTION OF COUNTY HIGHWAY 13. THE WORK ON THIS PROJECT CONSISTS OF EARTHWORK, DRAINAGE, PCC PAVEMENT, HMA PAVEMENT WIDENING AND RESURFACING, AND OTHER COLLATERAL WORK AS NECESSARY TO COMPLETE THE PROJECT. THE EXISTING RAILROAD CROSSING IMPROVEMENTS WILL BE COMPLETED UNDER A SEPARATE CONTRACT.

PLANS FOR PROPOSED COUNTY IMPROVEMENT

COUNTY HIGHWAY 13 (FAS ROUTE 364)
SECTION 16-00091-02-RR
PROJECT NO. 0203(029)
WOODFORD COUNTY
JOB NO. C-94-027-16



FULL SIZE PLANS HAVE BEEN PREPARED USING STANDARD ENGINEERING SCALES. REDUCED SIZED PLANS WILL NOT CONFORM TO STANDARD SCALES. IN MAKING MEASUREMENTS ON REDUCED PLANS, THE ABOVE SCALES MAY BE USED.

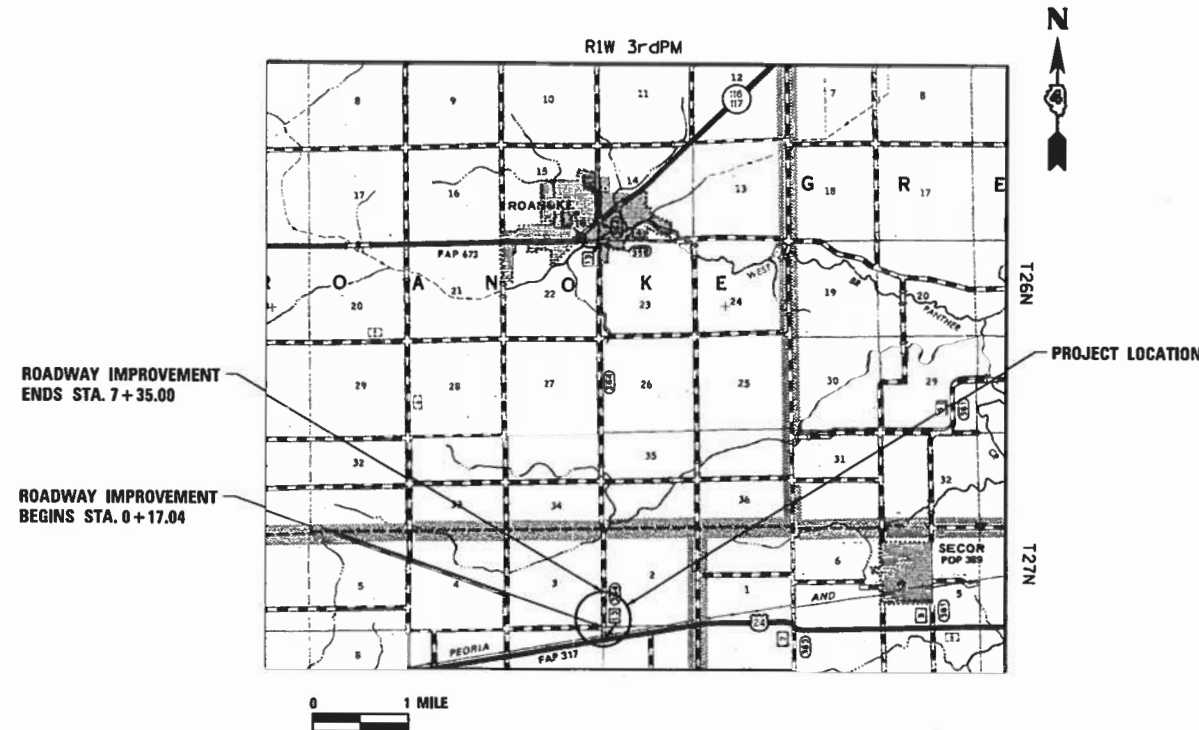
J.U.I.E.
JOINT UTILITY LOCATION INFORMATION FOR EXCAVATION
1-800-892-0123
OR 811

PROJECT ENGINEER GEORGE MERKLE, P.E.
PROJECT MANAGER RICK ANDERSON, P.E.

MAURER-STUTZ
ENGINEERS SURVEYORS

3116 DRIES LN STE 100
PEORIA, ILLINOIS 61604
PH. (309) 693-7615
FAX (309) 693-7616
PROFESSIONAL DESIGN FIRM #184-005754

CATALOG NO. 035364-00D
CONTRACT NO. 89812



ROADWAY CLASSIFICATION: MAJOR COLLECTOR
CH 13 (FROM US 24 TO 1000 NORTH RD)
ADT 1455 (2030) - 85% PV, 15% TRUCKS
DESIGN SPEED : 60 MPH
DESIGN POLICY : 3R GUIDELINES

GROSS LENGTH = 717.96 FT. = 0.1360 MILES
NET LENGTH = 708.82 FT. = 0.1342 MILES
VARIANCES: MINIMUM DISTANCE FROM STOP BAR TO A POINT 6 FEET FROM CLOSEST RAIL.
LENGTH OF VERTICAL CURVE BETWEEN US24 AND RAILROAD CROSSING.
COMMITMENTS: NONE

STATE OF ILLINOIS
DEPARTMENT OF TRANSPORTATION
DIVISION OF HIGHWAYS

APPROVED: 12/09/2021 (date)
[Signature]
Woodford County Engineer

PASSED: 1/6/2022 (date)
[Signature]
District 4 Engineer of Local Roads & Streets

RELEASING FOR BID BASED ON LIMITED REVIEW: January 6, 2022 (date)
[Signature]
Region 3 Engineer

PRINTED BY THE AUTHORITY OF THE STATE OF ILLINOIS

George B. Merkle
George B. Merkle, PE 12/7/2021
PE No. 142917
Exp. Date 11/30/2023

	ITEM CODE	ITEM	UNIT	TOTAL QUANTITY	RRP FUNDS	
					90% FED/10% LOCAL	100% LOCAL
					CONSTRUCTION CODE	
					0004	0004
	20200100	EARTH EXCAVATION	CU YD	370	42	328
SP	20201200	REMOVAL AND DISPOSAL OF UNSUITABLE MATERIAL	CU YD	40	18	22
	20400800	FURNISHED EXCAVATION	CU YD	1,155	157	998
	21101615	TOPSOIL FURNISH AND PLACE, 4"	SQ YD	3,144	352	2,792
SP	21301052	EXPLORATION TRENCH 52" DEPTH	FOOT	500		500
	25000300	SEEDING, CLASS 3	ACRE	0.75	0.07	0.68
	25000400	NITROGEN FERTILIZER NUTRIENT	POUND	59	7	52
	25000500	PHOSPHORUS FERTILIZER NUTRIENT	POUND	59	7	52
	25000600	POTASSIUM FERTILIZER NUTRIENT	POUND	59	7	52
	25100635	HEAVY DUTY EROSION CONTROL BLANKET	SQ YD	3,144	352	2,792
	28000250	TEMPORARY EROSION CONTROL SEEDING	POUND	225	25	200
	28000305	TEMPORARY DITCH CHECKS	FOOT	60		60
	28000400	PERIMETER EROSION BARRIER	FOOT	641	317	324
	28000500	INLET AND PIPE PROTECTION	EACH	2	1	1
	35100300	AGGREGATE BASE COURSE, TYPE A 4"	SQ YD	381	381	
	35600650	HOT-MIX ASPHALT BASE COURSE WIDENING, 4"	SQ YD	546	54	492

FILE NAME: S:\237\2016\23716812\1 Woodford Co CH 13 at US24 Ph. IIT\CADD\CADD Sheets\0416812-ent-500.dgn

	USER NAME = bmwagehoft	DESIGNED - JDS	REVISED -	WOODFORD COUNTY HIGHWAY DEPARTMENT	COUNTY HIGHWAY 13 AT ROUTE 24 IMPROVEMENTS SUMMARY OF QUANTITIES	F.A.S. RTE.	SECTION	COUNTY	TOTAL SHEETS	SHEET NO.
	PLDT SCALE = 100.0000' / 1"	DRAWN - CAD	REVISED -			364	16-00091-02-RR	WOODFORD	24	3
	PLDT DATE = 12/17/2021	CHECKED - GBM	REVISED -			CONTRACT NO. 89812				
		DATE - 12/10/2021	REVISED -			SHEET 1 OF 4 SHEETS STA. TO STA.				

	ITEM CODE	ITEM	UNIT	TOTAL QUANTITY	RRP FUNDS	
					90% FED/10% LOCAL	100% LOCAL
					CONSTRUCTION CODE	
					0004	0004
SP	40200800	AGGREGATE SURFACE COURSE, TYPE B	TON	96		96
	40600295	POLYMERIZED BITUMINOUS MATERIALS (TACK COAT)	POUND	4,998	450	4,548
	40600982	HOT-MIX ASPHALT SURFACE REMOVAL - BUTT JOINT	SQ YD	214	81	133
	40603205	POLYMERIZED HOT-MIX ASPHALT BINDER COURSE, IL-9.5, N50	TON	275	7	268
	40604150	POLYMERIZED HOT-MIX ASPHALT SURFACE COURSE, IL-9.5, MIX "C", N50	TON	189	17	172
	42000501	PORTLAND CEMENT CONCRETE PAVEMENT 10" (JOINTED)	SQ YD	378	378	
	44000100	PAVEMENT REMOVAL	SQ YD	223	219	4
	48101200	AGGREGATE SHOULDERS, TYPE B	TON	248	24	224
	48300100	PORTLAND CEMENT CONCRETE SHOULDERS 6"	SQ YD	102	102	
SP	50105220	PIPE CULVERT REMOVAL	FOOT	101	70	31
	542A1063	PIPE CULVERTS, CLASS A, TYPE 2 18"	FOOT	150	150	
SP	542C0220	PIPE CULVERTS, CLASS C, TYPE 1 15"	FOOT	89		89
	54213663	PRECAST REINFORCED CONCRETE FLARED END SECTIONS 18"	EACH	2	2	
	54260415	SLOPED METAL END SECTION, STANDARD 542411, 15", 1:4	EACH	2		2
	60100060	CONCRETE HEADWALLS FOR PIPE DRAINS	EACH	2		2
	60100915	PIPE DRAINS 6"	FOOT	100		100

FILE NAME: S:\237\2016\16217160121 Woodford Co. CH 13 at US24 Ph. I:\CADD\WOOD Sheets\0416612-ht-500.dgn



USER NAME = bmwagehof
 PLOT SCALE = 100.0000' / 1in.
 PLOT DATE = 12/17/2021

DESIGNED - JDS
 DRAWN - CAD
 CHECKED - GBM
 DATE - 12/10/2021

REVISED -
 REVISED -
 REVISED -
 REVISED -

**WOODFORD COUNTY
 HIGHWAY DEPARTMENT**

**COUNTY HIGHWAY 13 AT ROUTE 24 IMPROVEMENTS
 SUMMARY OF QUANTITIES**

SHEET 2 OF 4 SHEETS STA. TO STA.

F.A.S. RTE.	SECTION	COUNTY	TOTAL SHEETS	SHEET NO.
364	16-00091-02-RR	WOODFORD	24	4
CONTRACT NO. 89812				

	ITEM CODE	ITEM	UNIT	TOTAL QUANTITY	RRP FUNDS	
					90% FED/10% LOCAL	100% LOCAL
					CONSTRUCTION CODE	
					0004	0004
SP	61101007	STORM SEWERS PROTECTED, CLASS A, 6"	FOOT	100		100
SP	61101011	STORM SEWERS PROTECTED, CLASS A, 10"	FOOT	100		100
SP	61101017	STORM SEWERS PROTECTED, CLASS A, 15"	FOOT	100		100
	61133200	FIELD TILE JUNCTION VAULTS, 3' DIA.	EACH	1		1
	61139900	STORM SEWERS (SPECIAL), 6"	FOOT	100		100
	61140100	STORM SEWERS (SPECIAL), 10"	FOOT	100		100
	61140400	STORM SEWERS (SPECIAL), 15"	FOOT	100		100
	67100100	MOBILIZATION	L SUM	1	0.16	0.84
	70300100	SHORT TERM PAVEMENT MARKING	FOOT	206	116	90
	70300150	SHORT TERM PAVEMENT MARKING REMOVAL	SQ FT	69	39	30
*	72400500	RELOCATE SIGN PANEL ASSEMBLY - TYPE A	EACH	3	3	
*	78001100	PAINT PAVEMENT MARKING - LETTERS AND SYMBOLS	SQ FT	61	61	
*	78001110	PAINT PAVEMENT MARKING - LINE 4"	FOOT	2,248	424	1,824
*	78001180	PAINT PAVEMENT MARKING - LINE 24"	FOOT	117	93	24
*	78100100	RAISED REFLECTIVE PAVEMENT MARKER	EACH	9	1	8
SP	LR443200	STRIP REFLECTIVE CRACK CONTROL TREATMENT	FOOT	1,382	124	1,258

FILE NAME: S:\237\2016\237160121 Woodford Co CH 13 at US24 Ph. I:\CAD\2016\237160121-INT-S00.dgn



USER NAME = bmgahof	DESIGNED - JDS	REVISED -
	DRAWN - CAD	REVISED -
PLOT SCALE = 100.0000' / 1in.	CHECKED - GBM	REVISED -
PLOT DATE = 12/17/2021	DATE - 12/10/2021	REVISED -

**WOODFORD COUNTY
HIGHWAY DEPARTMENT**

**COUNTY HIGHWAY 13 AT ROUTE 24 IMPROVEMENTS
SUMMARY OF QUANTITIES**

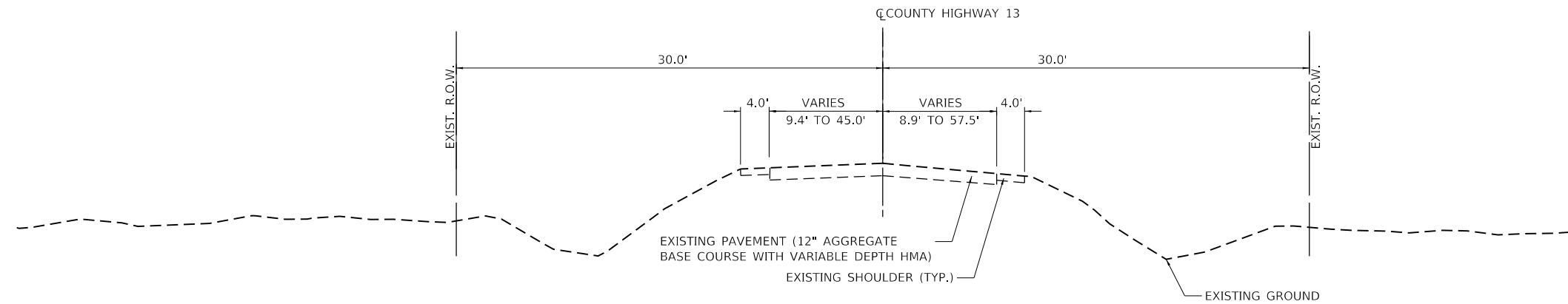
SHEET 3 OF 4 SHEETS STA. TO STA.

F.A.S. RTE.	SECTION	COUNTY	TOTAL SHEETS	SHEET NO.
364	16-00091-02-RR	WOODFORD	24	5
CONTRACT NO. 89812				

	ITEM CODE	ITEM	UNIT	TOTAL QUANTITY	RRP FUNDS	
					90% FED/10% LOCAL	100% LOCAL
					CONSTRUCTION CODE	
					0004	0004
SP	X4401198	HOT-MIX ASPHALT SURFACE REMOVAL, VARIABLE DEPTH	SQ YD	1,280	68	1,212
SP	X6660410	REMOVE RIGHT-OF-WAY MARKERS	EACH	1	1	
SP	X7010216	TRAFFIC CONTROL AND PROTECTION, (SPECIAL)	L SUM	1	0.16	0.84
SP	Z0013798	CONSTRUCTION LAYOUT	L SUM	1	0.16	0.84
SP	Z0034105	MATERIAL TRANSFER DEVICE	TON	329	23	306
SP	Z0048665	RAILROAD PROTECTIVE LIABILITY INSURANCE	L SUM	1	1.00	
SP	Z0062000	SAW CUTTING	FOOT	1,382	124	1,258
*	SPECIALTY ITEM					
SP	APPLICABLE SPECIAL PROVISIONS					

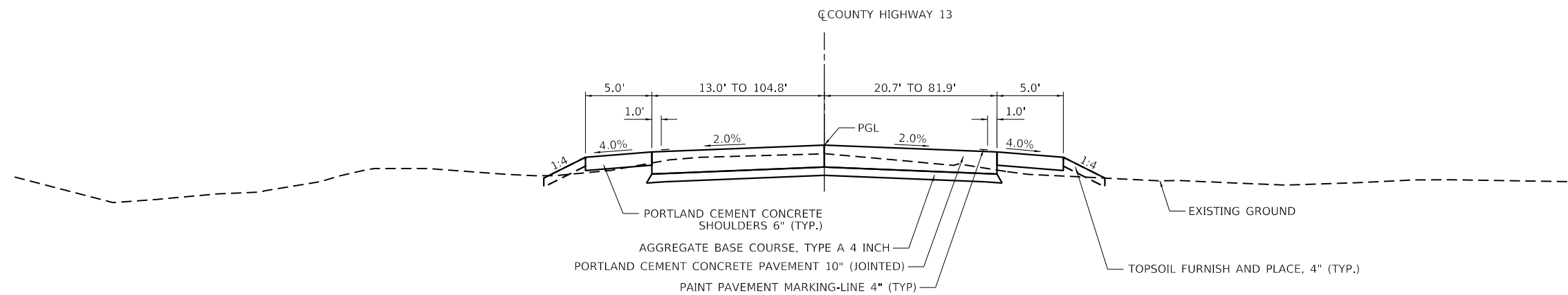
FILE NAME: S:\237\2018\23716812\21 Woodford Co CH 13 at US24 Ph 11\CAD\00\CADD Sheets\0416812-ht-500.dgn

	USER NAME = bmgahofst	DESIGNED - JDS	REVISED -	WOODFORD COUNTY HIGHWAY DEPARTMENT	COUNTY HIGHWAY 13 AT ROUTE 24 IMPROVEMENTS SUMMARY OF QUANTITIES	F.A.S. RTE.	SECTION	COUNTY	TOTAL SHEETS	SHEET NO.
	PLOT SCALE = 100,0000' / 1" =	DRAWN - CAD	REVISED -			364	16-00091-02-RR	WOODFORD	24	6
	PLOT DATE = 12/17/2021	CHECKED - GBM	REVISED -			CONTRACT NO. 89812				
	DATE - 12/10/2021	REVISED -		SHEET 4 OF 4 SHEETS STA. TO STA.						



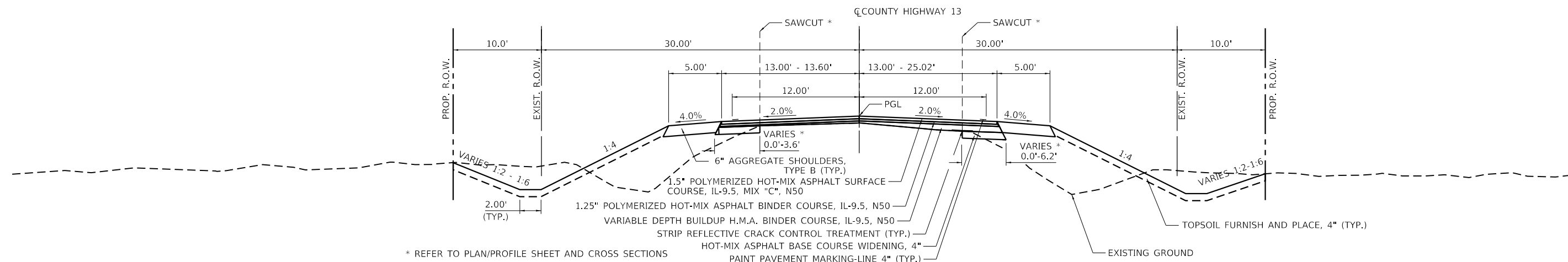
NOTE:
EXISTING R.O.W. LIMITS SHOWN
BEGIN AT STA. 1+34.10

EXISTING TYPICAL SECTION
STA. 0+17.04 TO STA. 7+35.00



PROPOSED TYPICAL SECTION
STA. 0+17.04 TO STA. 0+63.11

RAILROAD CROSSING OMISSION
STA. 0+76.29 TO STA. 0+85.43



* REFER TO PLAN/PROFILE SHEET AND CROSS SECTIONS

PROPOSED TYPICAL SECTION
STA. 0+63.11 TO STA. 7+35.00

FILE NAME: S:\237\2016\23716012\1\Woodford_Co_CH_13.dwg USER: jdspliller



USER NAME = jdspliller	DESIGNED - JDS	REVISED -
PLOT SCALE = 10.0000' / 1"	DRAWN - CAD	REVISED -
PLOT DATE = 12/9/2021	CHECKED - GBM	REVISED -
	DATE - 12/10/2021	REVISED -

**WOODFORD COUNTY
HIGHWAY DEPARTMENT**

**COUNTY HIGHWAY 13 AT ROUTE 24 IMPROVEMENTS
TYPICAL SECTIONS**

SHEET OF SHEETS STA. TO STA.

F.A.S. RTE.	SECTION	COUNTY	TOTAL SHEETS	SHEET NO.
364	16-00091-02-RR	WOODFORD	24	7
CONTRACT NO. 89812				

20201200		REMOVAL AND DISPOSAL OF UNSUITABLE MATERIAL			
LOCATION				CU YD	REMARKS
RRP					
00+00.21	TO	00+79.57		16.8	10% OF WIDENING AND PCC PAVEMENT AREA
00+83.38	TO	01+32.59	LT	0.8	
00+87.35	TO	01+36.17	RT	0.9	
RRP SUBTOTAL				18.5	
LOCAL					
01+32.04	TO	07+35.00	LT	11.7	10% OF WIDENING
01+35.75	TO	07+35.00	RT	10.1	
100% LOCAL SUBTOTAL				21.8	
TOTAL				40.3	

21101615		TOPSOIL FURNISH AND PLACE, 4"			
LOCATION				SQ YD	REMARKS
RRP					
00+05.15	TO	01+31.24	LT	204.3	
00+34.96	TO	01+39.55	RT	147.4	
RRP SUBTOTAL				351.6	
LOCAL					
01+29.59	TO	04+78.62	LT	843.4	
01+36.96	TO	05+14.82	RT	903.9	
05+49.80	TO	05+55.84	RT	14.7	
05+90.84	TO	07+35.00	RT	367.1	
06+13.79	TO	07+35.00	LT	310.1	
600+00.00	TO	600+81.35	RT	198.9	
600+00.00	TO	600+82.64	LT	154.3	
100% LOCAL SUBTOTAL				2792.3	
TOTAL				3144.0	

21301052		EXPLORATION TRENCH 52" DEPTH			
LOCATION				FOOT	REMARKS
ENTIRE PROJECT					
				500.0	
100% LOCAL SUBTOTAL				500.0	
TOTAL				500.0	

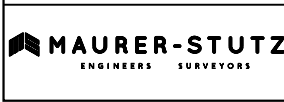
25000300		SEEDING, CLASS 3			
LOCATION				ACRE	REMARKS
RRP					
00+05.15	TO	01+31.24	LT	0.04	
00+34.96	TO	01+39.55	RT	0.03	
RRP SUBTOTAL				0.07	
LOCAL					
01+29.59	TO	04+78.62	LT	0.17	
01+36.96	TO	05+14.83	RT	0.19	
05+49.80	TO	05+55.84	RT	0.01	
05+90.84	TO	07+35.00	RT	0.08	
06+13.79	TO	07+35.00	LT	0.06	
600+00.00	TO	600+81.35	RT	0.04	
600+00.00	TO	600+82.64	LT	0.03	
100% LOCAL SUBTOTAL				0.58	
TOTAL				0.65	USE 0.75

25000400		NITROGEN FERTILIZER NUTRIENT			
LOCATION				POUND	REMARKS
RRP					
00+05.15	TO	01+31.24	LT	3.8	
00+34.96	TO	01+39.55	RT	2.7	
RRP SUBTOTAL				6.5	
LOCAL					
01+29.59	TO	04+78.62	LT	15.7	
01+36.96	TO	05+14.83	RT	16.8	
05+49.80	TO	05+55.84	RT	0.3	
05+90.84	TO	07+35.00	RT	6.8	
06+13.79	TO	07+35.00	LT	5.8	
600+00.00	TO	600+81.35	RT	3.7	
600+00.00	TO	600+82.64	LT	2.9	
100% LOCAL SUBTOTAL				52.0	
TOTAL				58.6	

25000500		PHOSPHORUS FERTILIZER NUTRIENT			
LOCATION				POUND	REMARKS
RRP					
00+05.15	TO	01+31.24	LT	3.8	
00+34.96	TO	01+39.55	RT	2.7	
RRP SUBTOTAL				6.5	
LOCAL					
01+29.59	TO	04+78.62	LT	15.7	
01+36.96	TO	05+14.83	RT	16.8	
05+49.80	TO	05+55.84	RT	0.3	
05+90.84	TO	07+35.00	RT	6.8	
06+13.79	TO	07+35.00	LT	5.8	
600+00.00	TO	600+81.35	RT	3.7	
600+00.00	TO	600+82.64	LT	2.9	
100% LOCAL SUBTOTAL				52.0	
TOTAL				58.6	

25000600		POTASSIUM FERTILIZER NUTRIENT			
LOCATION				POUND	REMARKS
RRP					
00+05.15	TO	01+31.24	LT	3.8	
00+34.96	TO	01+39.55	RT	2.7	
RRP SUBTOTAL				6.5	
LOCAL					
01+31.24	TO	04+78.88	LT	15.7	
01+39.55	TO	05+14.82	RT	16.8	
05+49.80	TO	05+55.84	RT	0.3	
05+90.84	TO	07+35.00	RT	6.8	
06+13.79	TO	07+35.00	LT	5.8	
600+00.00	TO	600+81.35	RT	3.7	
600+00.00	TO	600+82.64	LT	2.9	
100% LOCAL SUBTOTAL				52.0	
TOTAL				58.6	

FILE NAME: S:\237\2016\23716812\1\Woodford_Co_CAD_Sheets\0416812-ahz-schedule.dgn



USER NAME = bmwagehoft	DESIGNED - JDS	REVISED -
DRAWN - CAD	REVISOR -	
PLOT SCALE = 100.0000' / 1in.	CHECKED - GBM	REVISED -
PLOT DATE = 12/17/2021	DATE - 12/10/2021	REVISED -

**WOODFORD COUNTY
HIGHWAY DEPARTMENT**

**COUNTY HIGHWAY 13 AT ROUTE 24 IMPROVEMENTS
SCHEDULE OF QUANTITIES**

SHEET 1 OF 5 SHEETS STA. TO STA.

F.A.S. RTE.	SECTION	COUNTY	TOTAL SHEETS	SHEET NO.
364	16-00091-02-RR	WOODFORD	24	8
CONTRACT NO. 89812				

25100635 HEAVY DUTY EROSION CONTROL BLANKET					
LOCATION				SQ YD	REMARKS
RRP					
00+05.15	TO	01+31.24	LT	204.3	
00+34.96	TO	01+39.55	RT	147.4	
RRP SUBTOTAL				351.7	
LOCAL					
01+29.59	TO	04+78.62	LT	843.4	
01+36.96	TO	05+14.83	RT	903.9	
05+49.80	TO	05+55.84	RT	14.7	
05+90.84	TO	07+35.00	RT	367.1	
06+13.79	TO	07+35.00	LT	310.1	
600+00.00	TO	600+81.35	RT	198.9	
600+00.00	TO	600+82.64	LT	154.3	
100% LOCAL SUBTOTAL				2792.4	
TOTAL				3144.1	

28000250 TEMPORARY EROSION CONTROL SEEDING					
LOCATION				POUND	REMARKS
RRP					
			0.08	25.2	3 APPLICATIONS
RRP SUBTOTAL				25.2	
LOCAL					
			0.67		3 APPLICATIONS
100% LOCAL SUBTOTAL				199.8	
TOTAL				225.0	

28000305 TEMPORARY DITCH CHECKS					
LOCATION				FOOT	REMARKS
LOCAL					
01+87.98		36.3'	LT	10.0	
02+42.98		38.3'	LT	10.0	
03+63.86		36.4'	RT	10.0	
04+17.86		34.7'	RT	10.0	
04+71.86		32.8'	RT	10.0	
06+76.97		33.0'	LT	10.0	
100% LOCAL SUBTOTAL				60.0	
TOTAL				60.0	

28000400 PERIMETER EROSION BARRIER					
LOCATION				FOOT	REMARKS
RRP					
00+00.25	TO	00+74.39	LT	119.2	
00+29.99	TO	00+83.03	RT	83.5	
00+79.79	TO	01+29.63	LT	57.0	
00+87.85	TO	01+39.49	RT	57.9	
RRP SUBTOTAL				317.6	
LOCAL					
01+29.63	TO	01+50.00	LT	26.8	
01+39.49	TO	03+00.00	RT	161.4	
05+14.80	TO	05+90.84	RT	76.0	
600+00.00	TO	600+55.18	RT	59.6	
100% LOCAL SUBTOTAL				323.7	
TOTAL				641.2	

28000500 INLET AND PIPE PROTECTION					
LOCATION				EACH	REMARKS
RRP					
00+27.28		80.6'	LT	1.0	
RRP SUBTOTAL				1.0	
LOCAL					
06+00.80		32.0'	RT		
100% LOCAL SUBTOTAL				1.0	
TOTAL				2.0	

35100300 AGGREGATE BASE COURSE, TYPE A 4"					
LOCATION				SQ YD	REMARKS
RRP					
00+00.21	TO	00+67.09		381.4	
RRP SUBTOTAL				381.4	
TOTAL				381.4	

35600650 HOT-MIX ASPHALT BASE COURSE WIDENING, 4"					
LOCATION				SQ YD	REMARKS
RRP					
00+60.96	TO	00+74.39	LT	1.9	
00+65.34	TO	00+79.57	RT	13.8	
00+83.38	TO	01+32.59	LT	17.5	
00+87.35	TO	01+36.16	RT	21.0	
RRP SUBTOTAL				54.2	
LOCAL					
01+32.59	TO	04+81.66	LT	125.9	
01+35.75	TO	07+35.00	RT	228.1	
06+10.84	TO	07+35.00	LT	36.6	
600+49.97	TO	600+90.70	LT	36.3	
600+46.29	TO	600+89.82	RT	64.9	
100% LOCAL SUBTOTAL				491.8	
TOTAL				546.0	

40200800 AGGREGATE SURFACE COURSE, TYPE B					
LOCATION				TON	REMARKS
LOCAL					
05+14.80	TO	05+49.80	RT	48.1	DEPTH=8 INCHES
05+55.84	TO	05+90.84	RT	48.1	DEPTH=8 INCHES
100% LOCAL SUBTOTAL				96.2	
TOTAL				96.2	

40600295 POLYMERIZED BITUMINOUS MATERIALS (TACK COAT)					
LOCATION				POUND	REMARKS
RRP					
00+60.94	TO	00+79.59		116.5	
00+83.36	TO	01+36.18		333.4	
RRP SUBTOTAL				449.9	
LOCAL					
01+32.02	TO	07+35.00		3858.7	
600+00.00	TO	600+86.95		689.4	
100% LOCAL SUBTOTAL				4548.2	
TOTAL				4998.1	

FILE NAME: S:\237\2016\23716812\1\Woodford_Co_CH 13.dwg USER: Ph. III\WOOD\WOOD_Sheets\0416812-ah-tschedule.dwg

MAURER-STUTZ ENGINEERS SURVEYORS	USER NAME = bmwagehoft	DESIGNED - JDS	REVISED -	WOODFORD COUNTY HIGHWAY DEPARTMENT	COUNTY HIGHWAY 13 AT ROUTE 24 IMPROVEMENTS SCHEDULE OF QUANTITIES	F.A.S. RTE.	SECTION	COUNTY	TOTAL SHEETS	SHEET NO.
	PLOT SCALE = 100.0000' / 1" =	DRAWN - CAD	REVISED -			364	16-00091-02-RR	WOODFORD	24	9
	PLOT DATE = 12/17/2021	CHECKED - GBM	REVISED -			CONTRACT NO. 89812				

40600982 HOT-MIX ASPHALT SURFACE REMOVAL - BUTT JOINT				
LOCATION		SQ YD	REMARKS	
RRP				
00+83.51	TO 01+20.44	80.4		
		RRP SUBTOTAL	80.4	
LOCAL				
07+00.00	TO 07+35.00	75.3		
600+00.00	TO 600+25.41	58.0		
		100% LOCAL SUBTOTAL	133.3	
		TOTAL	213.7	

40603205 POLYMERIZED HOT-MIX ASPHALT BINDER COURSE, IL-9.5, N50				
LOCATION		TON	REMARKS	
RRP				
00+60.93	TO 00+79.60	3.7		
01+20.44	TO 01+36.19	3.6		
		RRP SUBTOTAL	7.3	
LOCAL				
01+34.10	TO 07+00.00	222.9		
600+25.41	TO 600+86.27	45.0		
		100% LOCAL SUBTOTAL	267.9	
		TOTAL	275.1	

40604150 POLYMERIZED HOT-MIX ASPHALT SURFACE COURSE, IL-9.5, MIX "C", N50				
LOCATION		TON	REMARKS	
RRP				
00+60.95	TO 00+79.58	4.4		
00+85.43	TO 01+36.17	12.6		
		RRP SUBTOTAL	17.0	
LOCAL				
01+36.17	TO 07+35.00	145.4		
600+00.00	TO 600+87.53	26.3		
		100% LOCAL SUBTOTAL	171.7	
		TOTAL	188.7	

42000501 PORTLAND CEMENT CONCRETE PAVEMENT 10" (JOINTED)				
LOCATION		SQ YD	REMARKS	
RRP				
00+00.21	TO 00+67.07	377.7		
		RRP SUBTOTAL	377.7	
		TOTAL	377.7	

44000100 PAVEMENT REMOVAL				
LOCATION		SQ YD	REMARKS	
RRP				
00+09.81	TO 00+65.34	219.5		
		RRP SUBTOTAL	219.5	
LOCAL				
600+00.00	TO 600+49.97	3.9		
		100% LOCAL SUBTOTAL	3.9	
		TOTAL	223.4	

48101200 AGGREGATE SHOULDERS, TYPE B				
LOCATION		TON	REMARKS	
RRP				
00+60.13	TO 00+74.23	2.5	LT	
00+67.07	TO 00+80.37	2.5	RT	
00+82.59	TO 01+32.04	9.2	LT	
00+88.32	TO 01+36.96	9.2	RT	
		RRP SUBTOTAL	23.4	

LOCAL				
01+32.04	TO 04+78.62	65.9	LT	
01+36.96	TO 05+14.83	71.8	RT	
05+49.82	TO 05+55.84	1.1	RT	
05+90.84	TO 07+35.00	24.7	RT	
06+13.79	TO 07+35.00	20.4	LT	
600+00.00	TO 600+86.35	21.7	RT	
600+00.00	TO 600+87.64	18.5	LT	
		100% LOCAL SUBTOTAL	224.1	
		TOTAL	247.5	

48300100 PORTLAND CEMENT CONCRETE SHOULDERS 6"				
LOCATION		SQ YD	REMARKS	
RRP				
00+00.21	TO 00+60.96	62.7	LT	
00+30.03	TO 00+67.86	39.0	RT	
		RRP SUBTOTAL	101.7	
		TOTAL	101.7	

50105220 PIPE CULVERT REMOVAL				
LOCATION		FOOT	REMARKS	
RRP				
00+32.55	TO 00+43.37	70.4	LT/RT	
		RRP SUBTOTAL	70.4	
LOCAL				
05+18.50	TO 05+49.19	30.7	RT	
		100% LOCAL SUBTOTAL	30.7	
		TOTAL	101.1	

542A1063 PIPE CULVERTS, CLASS A, TYPE 2 18"				
LOCATION		FOOT	REMARKS	
RRP				
00+27.69	TO 00+51.79	150.0		
		RRP SUBTOTAL	150.0	
		TOTAL	150.0	

542C0220 PIPE CULVERTS, CLASS C, TYPE 1 15"				
LOCATION		FOOT	REMARKS	
LOCAL				
05+09.71	TO 05+98.46	89.0	RT	
		100% LOCAL SUBTOTAL	89.0	
		TOTAL	89.0	

54213663 PRECAST REINFORCED CONCRETE FLARED END SECTIONS 18"				
LOCATION		EACH	REMARKS	
RRP				
00+27.69	78.1'	1.0	LT	
00+51.79	69.1'	1.0	RT	
		RRP SUBTOTAL	2.0	
		TOTAL	2.0	

FILE NAME: S:\237\2016\23716812\1\Woodford_Co_CH_13.dwg USER: bimagehofr



USER NAME = bimagehofr	DESIGNED - JDS	REVISED -
	DRAWN - CAD	REVISED -
PLOT SCALE = 100.0000' / 1" =	CHECKED - GBM	REVISED -
PLOT DATE = 12/17/2021	DATE - 12/10/2021	REVISED -

**WOODFORD COUNTY
HIGHWAY DEPARTMENT**

**COUNTY HIGHWAY 13 AT ROUTE 24 IMPROVEMENTS
SCHEDULE OF QUANTITIES**

SHEET 3 OF 5 SHEETS STA. TO STA.

F.A.S. RTE.	SECTION	COUNTY	TOTAL SHEETS	SHEET NO.
364	16-00091-02-RR	WOODFORD	24	10
CONTRACT NO. 89812				

54260415 SLOPED METAL END SECTION, STANDARD 542411, 15", 1:4				
LOCATION			EACH	REMARKS
LOCAL				
05+07.21	31.5'	RT	1.0	
06+00.96	32.2'	RT	1.0	
		100% LOCAL SUBTOTAL	2.0	
		TOTAL	2.0	

60100060 CONCRETE HEADWALLS FOR PIPE DRAINS				
LOCATION			EACH	REMARKS
ENTIRE PROJECT			2.0	
		100% LOCAL SUBTOTAL	2.0	
		TOTAL	2.0	

60100915 PIPE DRAINS 6"				
LOCATION			FOOT	REMARKS
ENTIRE PROJECT			100.0	
		100% LOCAL SUBTOTAL	100.0	
		TOTAL	100.0	

61101007 STORM SEWERS PROTECTED, CLASS A, 6"				
LOCATION			FOOT	REMARKS
ENTIRE PROJECT			100.0	
		100% LOCAL SUBTOTAL	100.0	
		TOTAL	100.0	

61101011 STORM SEWERS PROTECTED, CLASS A, 10"				
LOCATION			FOOT	REMARKS
ENTIRE PROJECT			100.0	
		100% LOCAL SUBTOTAL	100.0	
		TOTAL	100.0	

61101017 STORM SEWERS PROTECTED, CLASS A, 15"				
LOCATION			FOOT	REMARKS
ENTIRE PROJECT			100.0	
		100% LOCAL SUBTOTAL	100.0	
		TOTAL	100.0	

61133200 FIELD TILE JUNCTION VAULTS, 3' DIA.				
LOCATION			EACH	REMARKS
ENTIRE PROJECT			1.0	
		100% LOCAL SUBTOTAL	1.0	
		TOTAL	1.0	

61139900 STORM SEWERS (SPECIAL), 6"				
LOCATION			FOOT	REMARKS
ENTIRE PROJECT			100.0	
		100% LOCAL SUBTOTAL	100.0	
		TOTAL	100.0	

61140100 STORM SEWERS (SPECIAL), 10"				
LOCATION			FOOT	REMARKS
ENTIRE PROJECT			100.0	
		100% LOCAL SUBTOTAL	100.0	
		TOTAL	100.0	

61140400 STORM SEWERS (SPECIAL), 15"				
LOCATION			FOOT	REMARKS
ENTIRE PROJECT			100.0	
		100% LOCAL SUBTOTAL	100.0	
		TOTAL	100.0	

70300100 SHORT TERM PAVEMENT MARKING						FOOT	REMARKS
RRP							
00+39.36			LT			36.0	4 INCH WIDE SOLID WHITE STOP
00+40.26	TO	00+76.27				4.0	4 INCH WIDE SKIP DASH YELLOW
00+56.39			RT			36.0	4 INCH WIDE SOLID WHITE STOP
00+85.43	TO	01+34.10				4.4	4 INCH WIDE SKIP YELLOW
01+05.13			LT			36.0	4 INCH WIDE SOLID WHITE STOP
					RRP SUBTOTAL	116.4	
					LOCAL		
01+34.10	TO	07+35.00				54.1	4 INCH WIDE SKIP YELLOW
600+72.40			RT			36.0	4 INCH WIDE SOLID WHITE STOP
					100% LOCAL SUBTOTAL	90.1	
					TOTAL	206.5	

70300150 SHORT TERM PAVEMENT MARKING REMOVAL						SQ FT	REMARKS
RRP							
00+39.36			LT			12.0	
00+40.26	TO	00+76.27				1.3	
00+56.39			RT			12.0	
00+85.43	TO	01+34.10				1.5	
01+05.13			LT			12.0	
					RRP SUBTOTAL	38.8	
					LOCAL		
00+85.43	TO	07+35.00				18.0	
600+72.40			RT			12.0	
					100% LOCAL SUBTOTAL	30.0	
					TOTAL	68.8	

72400500 RELOCATE SIGN PANEL ASSEMBLY - TYPE A						EACH	REMARKS
RRP							
00+44.10		37.0'	LT			1.0	
00+46.88		60.1'	RT			1.0	
00+50.34		63.7'	RT			1.0	
					RRP SUBTOTAL	3.0	
					TOTAL	3.0	

78001100 PAINT PAVEMENT MARKING - LETTERS AND SYMBOLS						SQ FT	REMARKS
RRP							
01+98.51		6.5'	LT			61.2	SOLID WHITE
					RRP SUBTOTAL	61.2	
					TOTAL	61.2	

FILE NAME: S:\237\2016\23716812\1\Woodford_Co_CD Sheets\0416812-ht-schedule.dgn



USER NAME = bmwagehoft	DESIGNED - JDS	REVISED -
	DRAWN - CAD	REVISED -
PLOT SCALE = 100.0000' / 1in.	CHECKED - GBM	REVISED -
PLOT DATE = 12/17/2021	DATE - 12/10/2021	REVISED -

**WOODFORD COUNTY
HIGHWAY DEPARTMENT**

**COUNTY HIGHWAY 13 AT ROUTE 24 IMPROVEMENTS
SCHEDULE OF QUANTITIES**

SHEET 4 OF 5 SHEETS STA. TO STA.

F.A.S. RTE.	SECTION	COUNTY	TOTAL SHEETS	SHEET NO.
364	16-00091-02-RR	WOODFORD	24	11
CONTRACT NO. 89812				

78001110 PAINT PAVEMENT MARKING - LINE 4"					
LOCATION				FOOT	REMARKS
RRP					
00+00.00	TO	00+74.39	LT	131.6	SOLID WHITE
00+29.04	TO	00+79.28	RT	88.8	SOLID WHITE
00+40.26	TO	00+76.34	RT	10.0	SKIP DASH YELLOW
00+40.26	TO	00+76.27	LT	36.0	SOLID YELLOW
00+83.54	TO	01+32.20	LT	48.7	SOLID WHITE
00+85.43	TO	01+34.08	LT	48.7	SOLID YELLOW
00+85.43	TO	01+34.15	RT	12.2	SKIP DASH YELLOW
00+88.16	TO	01+36.01	RT	48.3	SOLID WHITE
				RRP SUBTOTAL	424.2
LOCAL					
01+32.20	TO	04+81.67	LT	349.5	SOLID WHITE
01+34.08	TO	07+35.00	LT	600.9	SOLID YELLOW
01+34.15	TO	07+35.00	RT	150.2	SKIP DASH YELLOW
01+36.01	TO	07+35.00	RT	599.2	SOLID WHITE
06+10.84	TO	07+35.00	LT	124.3	SOLID WHITE
				100% LOCAL SUBTOTAL	1824.1
				TOTAL	2248.3

78001180 PAINT PAVEMENT MARKING - LINE 24"					
LOCATION				FOOT	REMARKS
RRP					
00+39.36			LT	24.3	SOLID WHITE
00+56.39			RT	29.8	SOLID WHITE
01+05.13			LT	13.0	SOLID WHITE
01+74.51			LT	13.0	SOLID WHITE
02+22.51			LT	13.0	SOLID WHITE
				RRP SUBTOTAL	93.0
LOCAL					
600+72.40			RT	23.9	SOLID WHITE
				100% LOCAL SUBTOTAL	23.9
				TOTAL	117.0

78100100 RAISED REFLECTIVE PAVEMENT MARKER					
LOCATION				EACH	REMARKS
RRP					
00+40.26	TO	01+34.15		1.0	
				RRP SUBTOTAL	1.0
LOCAL					
01+34.15	TO	07+35.00		8.0	
				100% LOCAL SUBTOTAL	8.0
				TOTAL	9.0

LR443200 STRIP REFLECTIVE CRACK CONTROL TREATMENT					
LOCATION				FOOT	REMARKS
RRP					
00+61.25	TO	00+74.39	LT	13.2	
00+65.34	TO	00+78.39	RT	13.1	
00+83.47	TO	01+32.59	LT	49.5	
00+87.35	TO	01+35.75	RT	48.6	
				RRP SUBTOTAL	124.4
LOCAL					
01+32.59	TO	05+19.14	LT	386.6	
01+35.75	TO	07+35.00	RT	599.3	
05+95.89	TO	07+35.00	LT	139.1	
600+49.97	TO	600+90.60	LT	69.5	
600+46.29	TO	600+89.46	RT	63.4	
				100% LOCAL SUBTOTAL	1257.8
				TOTAL	1382.2

X4401198 HOT-MIX ASPHALT SURFACE REMOVAL, VARIABLE DEPTH					
LOCATION				SQ YD	REMARKS
RRP					
00+61.25	TO	00+78.39		37.0	
01+20.44	TO	01+35.75		30.5	
				RRP SUBTOTAL	67.5
LOCAL					
01+32.59	TO	07+00.00		1212.4	
				100% LOCAL SUBTOTAL	1212.4
				TOTAL	1279.9

X6660410 REMOVE RIGHT-OF-WAY MARKERS					
LOCATION				EACH	REMARKS
RRP					
01+28.85		29.8'	LT	1.0	
				RRP SUBTOTAL	1.0
				TOTAL	1.0

Z0034105 MATERIAL TRANSFER DEVICE					
LOCATION				TON	REMARKS
RRP					
				23.5	
				RRP SUBTOTAL	23.5
LOCAL					
				305.7	
				100% LOCAL SUBTOTAL	305.7
				TOTAL	329.1

Z0062000 SAW CUTTING					
LOCATION				FOOT	REMARKS
RRP					
00+61.25	TO	00+74.39	LT	13.2	
00+65.34	TO	00+78.39	RT	13.1	
00+83.47	TO	01+32.59	LT	49.5	
00+87.35	TO	01+35.75	RT	48.6	
				RRP SUBTOTAL	124.4
LOCAL					
01+32.59	TO	05+19.14	LT	386.6	
01+35.75	TO	07+35.00	RT	599.3	
05+95.89	TO	07+35.00	LT	139.1	
600+49.97	TO	600+90.60	LT	69.5	
600+46.29	TO	600+89.46	RT	63.4	
				100% LOCAL SUBTOTAL	1257.8
				TOTAL	1382.2

LOCATION	EARTH EXCAVATION	EXCAVATION ADJUSTED FOR SHRINKAGE (25%)	EMBANKMENT (FILL)	EARTHWORK BALANCE WASTE (+) OR SHORTAGE (-)
COUNTY HIGHWAY 13	CU YD	CU YD	CU YD	CU YD
STA. 0+16.97 - STA. 1+34.10 (RRP)	41.45	31.08	187.73	-156.65
STA. 1+34.10 - STA. 7+35.00 (LOCAL)	286.80	215.10	1117.42	-902.32
COUNTY ROAD 1000N				
STA. 600+00.00 - 600+87.04 (LOCAL)	40.48	30.36	126.26	-95.90
RRP SUBTOTAL	41.45	31.08	187.73	-156.65
100% LOCAL SUBTOTAL	327.29	245.46	1243.68	-998.21
TOTAL	368.73	276.55	1431.41	-1154.86

EARTHWORK SUMMARY			
20200100	EARTH EXCAVATION	370	CU YD
20400800	FURNISHED EXCAVATION	1155	CU YD

FILE NAME: S:\237\2016\23716812\1\Woodford_Co_CH_13.dwg USER: bmmagehof



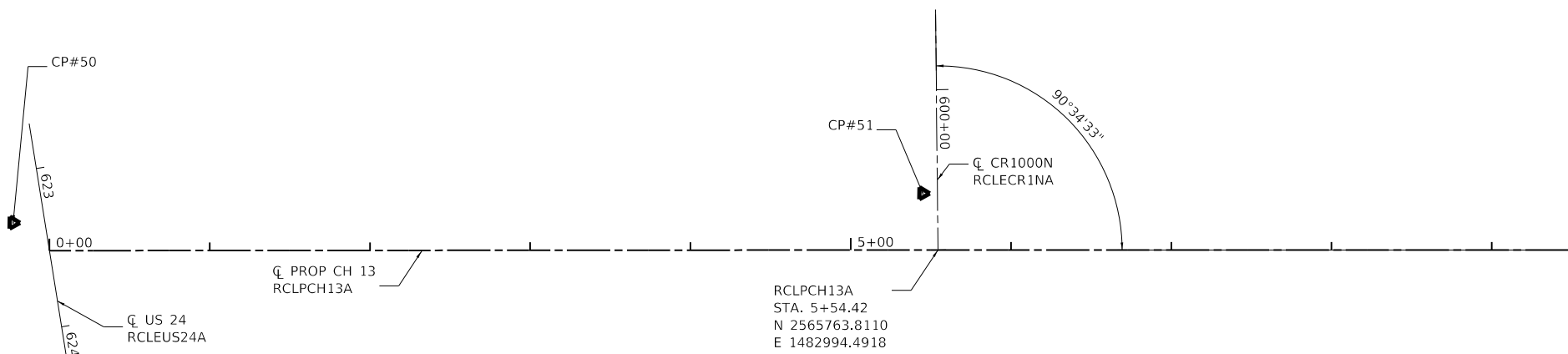
USER NAME = bmmagehof	DESIGNED - JDS	REVISED -
	DRAWN - CAD	REVISED -
PLOT SCALE = 100.0000' / 1" =	CHECKED - GBM	REVISED -
PLOT DATE = 12/17/2021	DATE - 12/10/2021	REVISED -

**WOODFORD COUNTY
HIGHWAY DEPARTMENT**

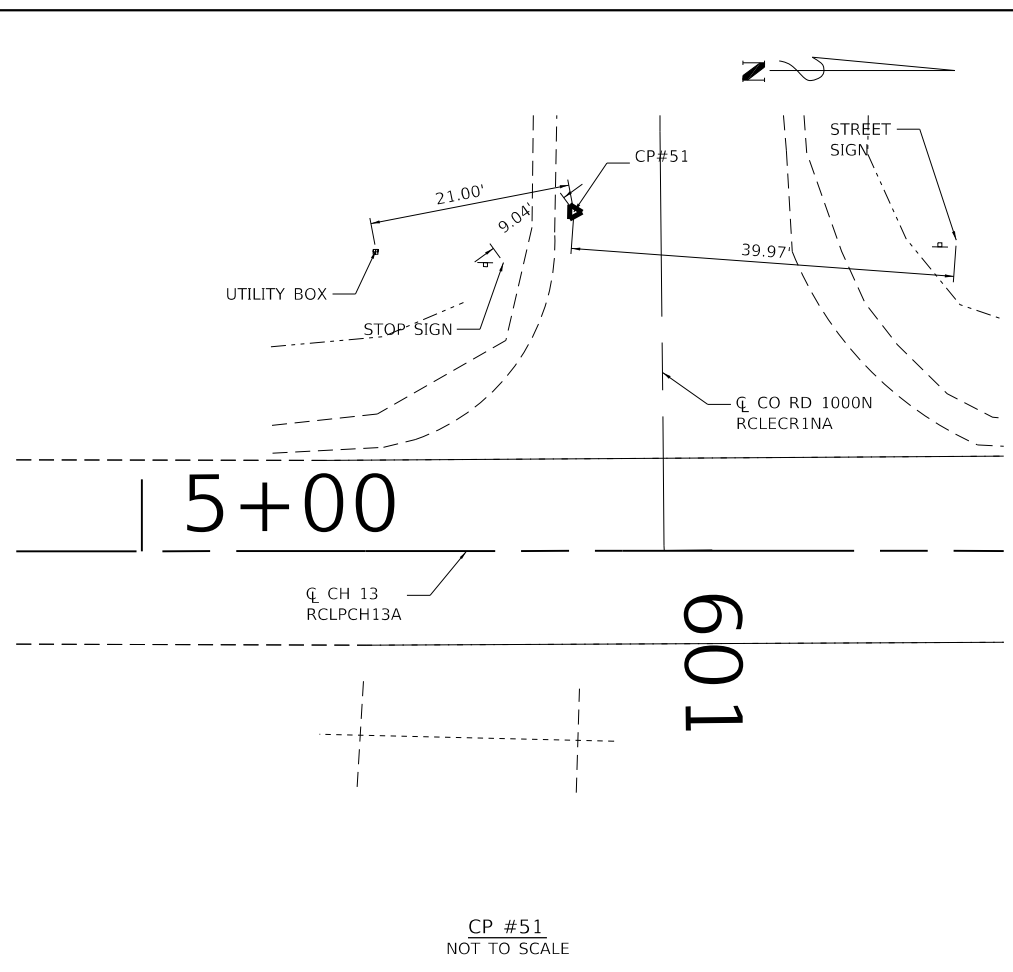
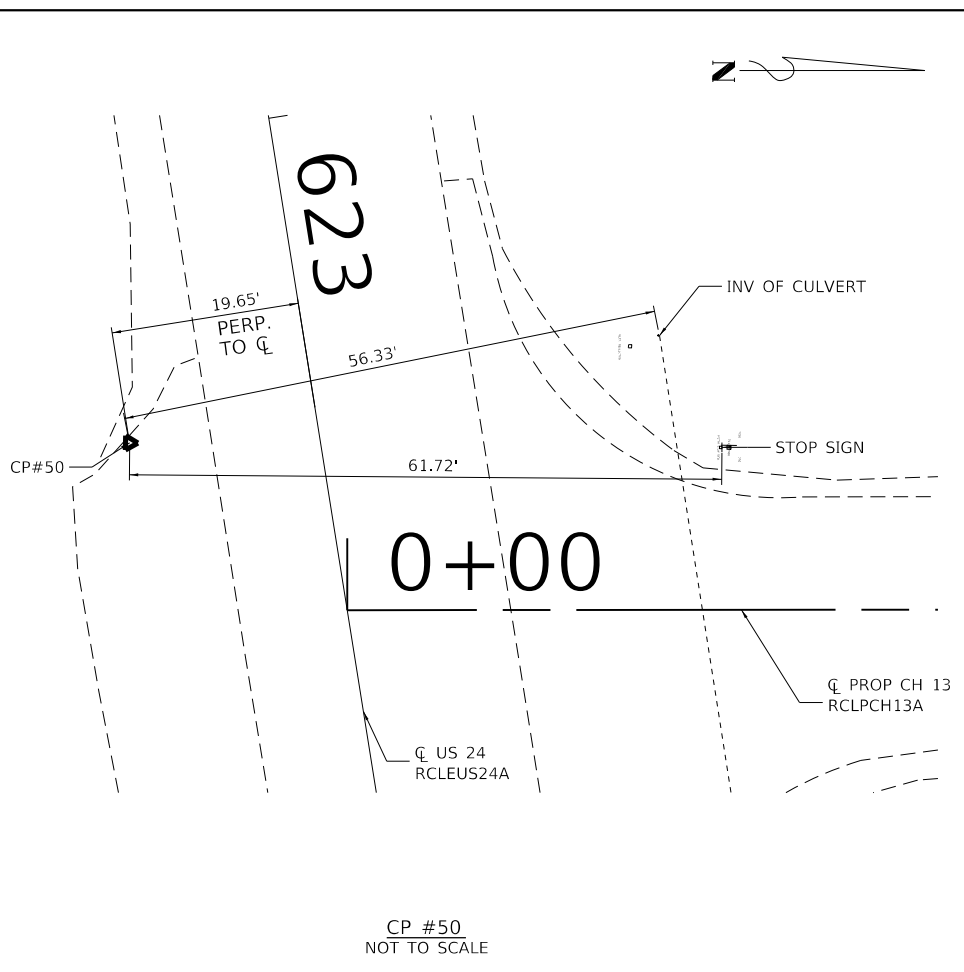
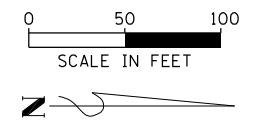
**COUNTY HIGHWAY 13 AT ROUTE 24 IMPROVEMENTS
SCHEDULE OF QUANTITIES**

SHEET 5 OF 5 SHEETS STA. TO STA.

F.A.S. RTE.	SECTION	COUNTY	TOTAL SHEETS	SHEET NO.
364	16-00091-02-RR	WOODFORD	24	12
			CONTRACT NO. 89812	



HORIZONTAL CONTROL POINTS						
POINT #	NORTHING	EASTING	CHAIN	STATION	OFFSET	DESCRIPTION
50	1482417.1770	2565757.3370	RCLEUS24A	623+31.10	19.65' RT	PK NAIL IN PAVEMENT
51	1482984.4410	2565728.6640	RCLPCH13A	5+45.04	35.33' LT	PK NAIL IN PAVEMENT
BENCHMARK						
DESIGNATION	ELEVATION	DESCRIPTION				
BM #452	734.29	CHISELED SQUARE ON WOODFORD COUNTY HIGHWAY DEPARTMENT MONUMENT 1104 LOCATED IN THE SOUTHEAST QUADRANT OF S.N. 102-3197 1.09 MILES FROM THE CENTERLINE OF US 24 ON COUNTY HIGHWAY 13				



CH 13 PROPOSED ALIGNMENT - CHAIN RCLPCH13A
 Chain RCLPCH13A contains:
 60764 60765 60766
 Beginning chain RCLPCH13A description
 Feature: Geom_Pr_Centerline
 Point 60764 X 2,565,774.3619 Y 1,482,440.1736 Sta 0+00.0000
 Course from 60764 to 60765 358° 54' 32.8837" Dist 550.0521 550.0521
 Point 60765 X 2,565,763.8900 Y 1,482,990.1260 Sta 5+50.0521
 Course from 60765 to 60766 358° 57' 47.5660" Dist 1,351.2052 1,351.2052
 Point 60766 X 2,565,739.4408 Y 1,484,341.1100 Sta 19+01.2573
 Ending chain RCLPCH13A description

US24 EXISTING ALIGNMENT - CHAIN RCLCH13A
 Chain RCLCH13A contains:
 9638 9639
 Beginning chain RCLCH13A description
 Feature: Geom_Ex_Centerline
 Course from 9638 to 9639 79° 53' 21.8837" Dist 193.9701 193.9701
 Point 9639 X 2,565,886.2491 Y 1,482,460.1250 Sta 624+65.5511
 Ending chain RCLCH13A description

CR1000N EXISTING ALIGNMENT - CHAIN RCLCR1NA
 Chain RCLCR1NA contains:
 60840 60841 60842
 Beginning chain RCLCR1NA description
 Feature: Geom_Ex_Centerline
 Point 60840 X 2,565,663.8067 Y 1,482,991.6763 Sta 600+00.0000
 Course from 60840 to 60841 88° 23' 14.4710" Dist 56.3525 56.3525
 Point 60841 X 2,565,720.1370 Y 1,482,993.2622 Sta 600+56.3525
 Course from 60841 to 60842 88° 23' 14.4710" Dist 43.6913 43.6913
 Point 60842 X 2,565,763.8110 Y 1,482,994.4918 Sta 601+00.0439
 Ending chain RCLCR1NA description

FILE NAME: S:\237\2016\23716012\1\Woodford_Co_CH_13.dwg



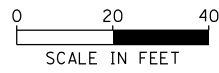
USER NAME = jdspliller	DESIGNED - JDS	REVISED -
PLOT SCALE = 100.0000' / 1"	DRAWN - CAD	REVISED -
PLOT DATE = 12/9/2021	CHECKED - GBM	REVISED -
	DATE - 12/10/2021	REVISED -

**WOODFORD COUNTY
HIGHWAY DEPARTMENT**

**COUNTY HIGHWAY 13 AT ROUTE 24 IMPROVEMENTS
ALIGNMENTS, TIES, AND BENCHMARKS**

SHEET	OF	SHEETS	STA.	TO	STA.
-------	----	--------	------	----	------

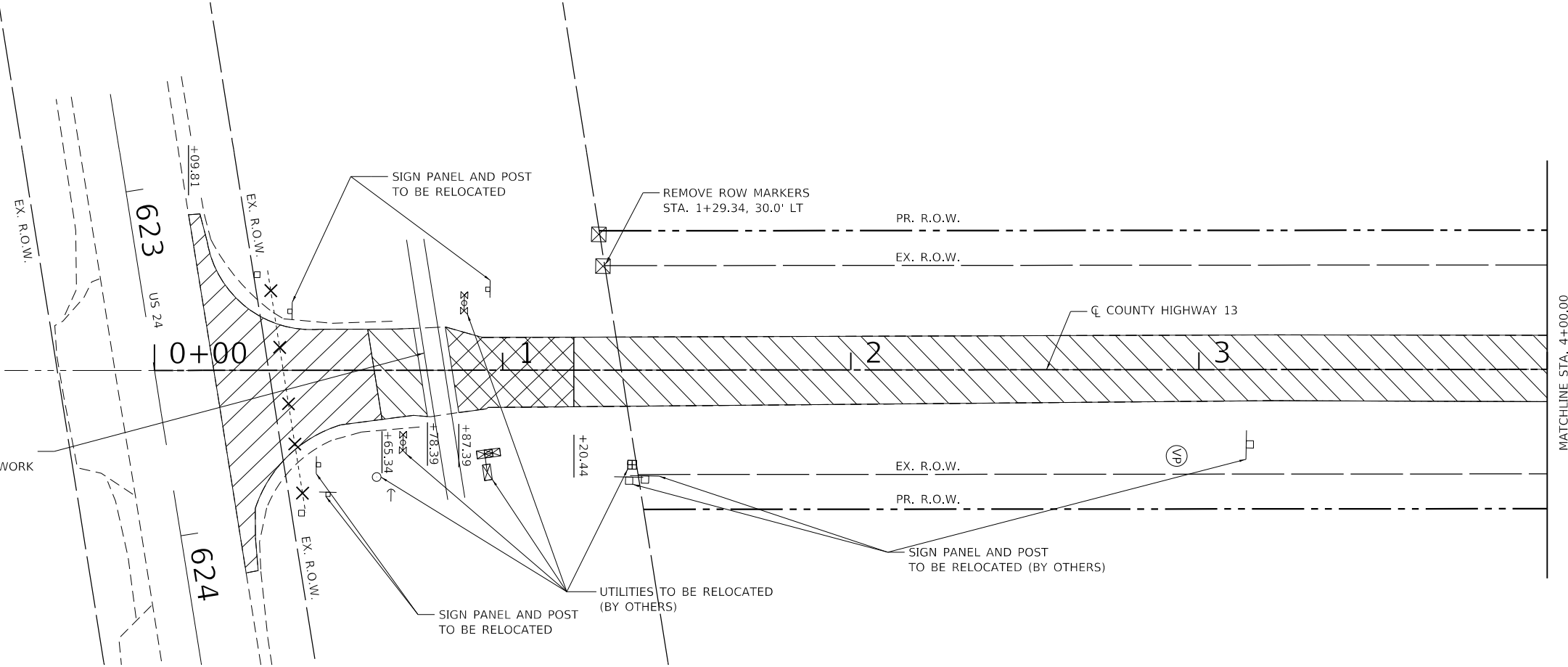
F.A.S. RTE.	SECTION	COUNTY	TOTAL SHEETS	SHEET NO.
364	16-00091-02-RR	WOODFORD	24	13
CONTRACT NO. 89812				



EXISTING RAILROAD CROSSING AND SIGNAL WORK (BY OTHERS)

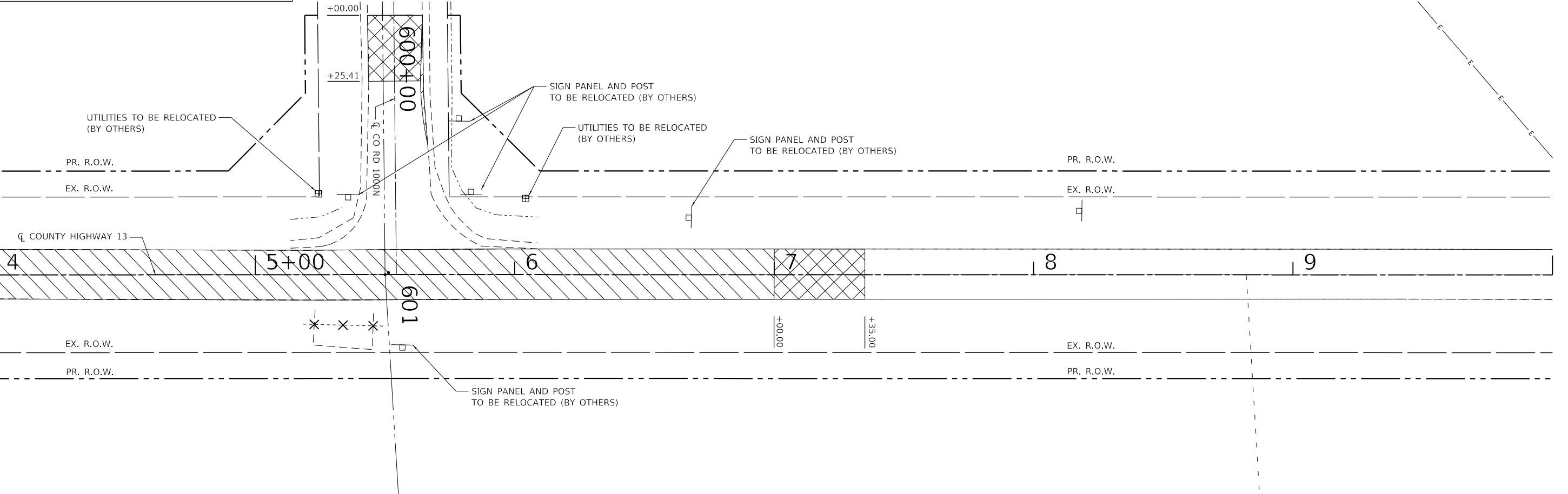
LEGEND

- H.M.A. SURFACE REMOVAL - BUTT JOINT
- H.M.A. SURFACE REMOVAL, VARIABLE DEPTH
- PAVEMENT REMOVAL
- PIPE CULVERT REMOVAL



MATCHLINE STA. 4+00.00

MATCHLINE STA. 4+00.00



FILE NAME = S:\237\2016\23716012.21\Woodford Co CH 13.at US24 Ph.11\ACADD\CADD Sheets\0416012.sht+removal.dgn



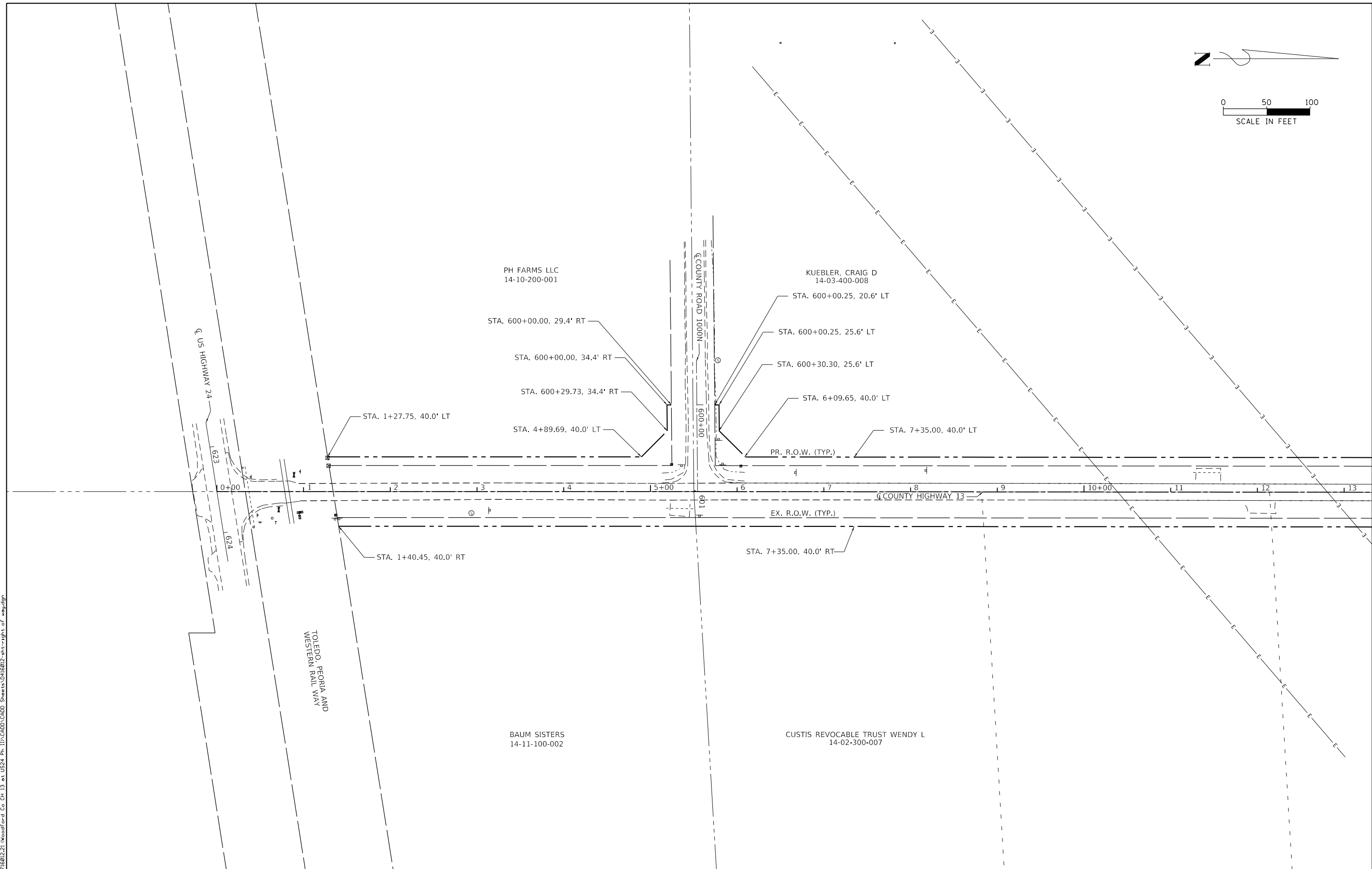
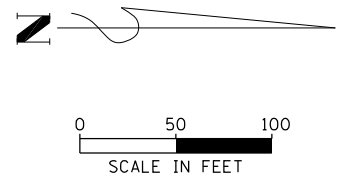
USER NAME = jdspliller	DESIGNED - JDS	REVISED -
PLOT SCALE = 40.0000' / in.	DRAWN - CAD	REVISED -
PLOT DATE = 12/9/2021	CHECKED - GBM	REVISED -
	DATE - 12/10/2021	REVISED -

WOODFORD COUNTY HIGHWAY DEPARTMENT

**COUNTY HIGHWAY 13 AT ROUTE 24 IMPROVEMENTS
REMOVAL PLAN**

SHEET OF SHEETS STA. TO STA.

F.A.S. RTE.	SECTION	COUNTY	TOTAL SHEETS	SHEET NO.
364	16-00091-02-RR	WOODFORD	24	14
CONTRACT NO. 89812				
ILLINOIS FED. AID PROJECT				



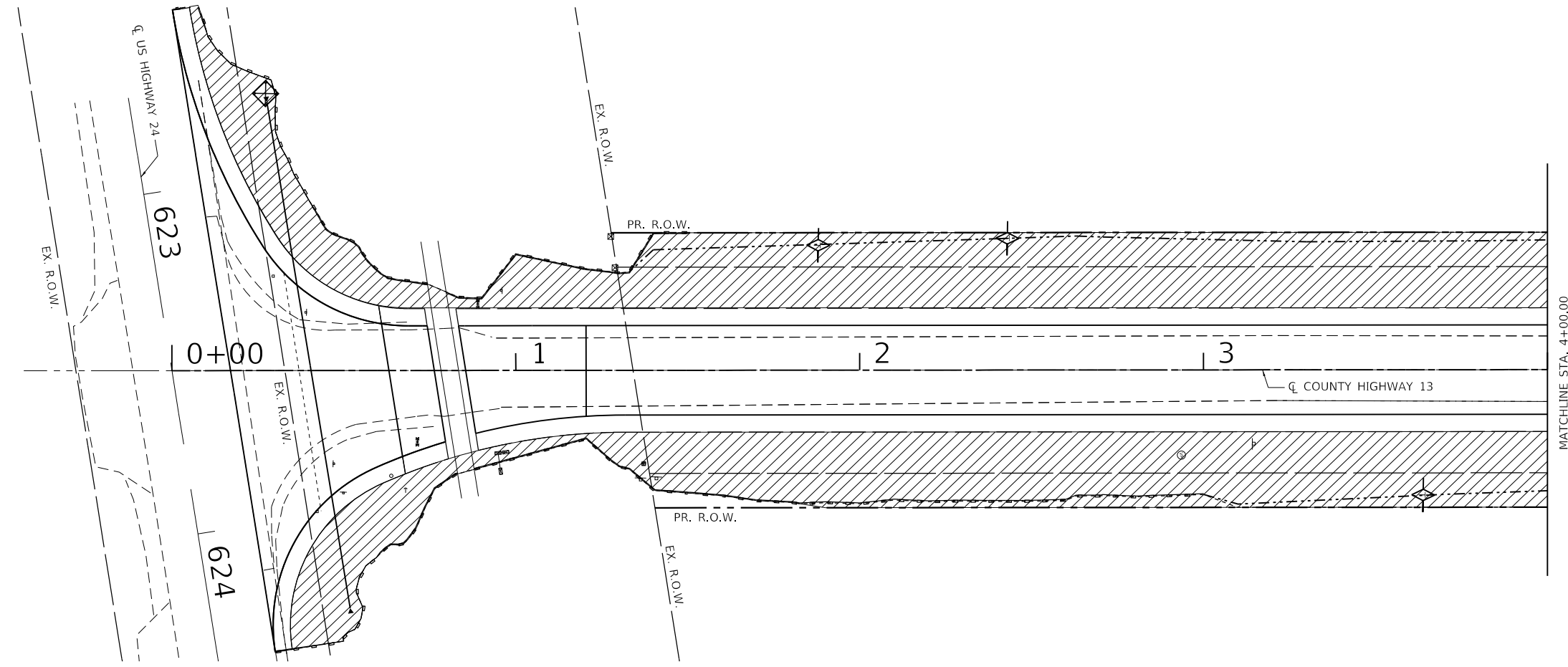
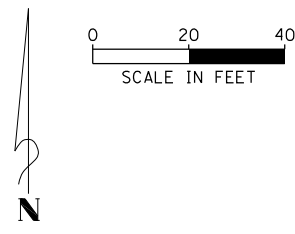
FILE NAME: S:\237\2016\23716012\1\Woodford Co CH 13.dwg
 USER: jds
 DATE: 12/9/2021

	USER NAME = jds	DESIGNED - JDS	REVISED -
	PLOT SCALE = 100.0000' / 1" =	DRAWN - CAD	REVISED -
	PLOT DATE = 12/9/2021	CHECKED - GBM	REVISED -
		DATE - 12/10/2021	REVISED -

**WOODFORD COUNTY
HIGHWAY DEPARTMENT**

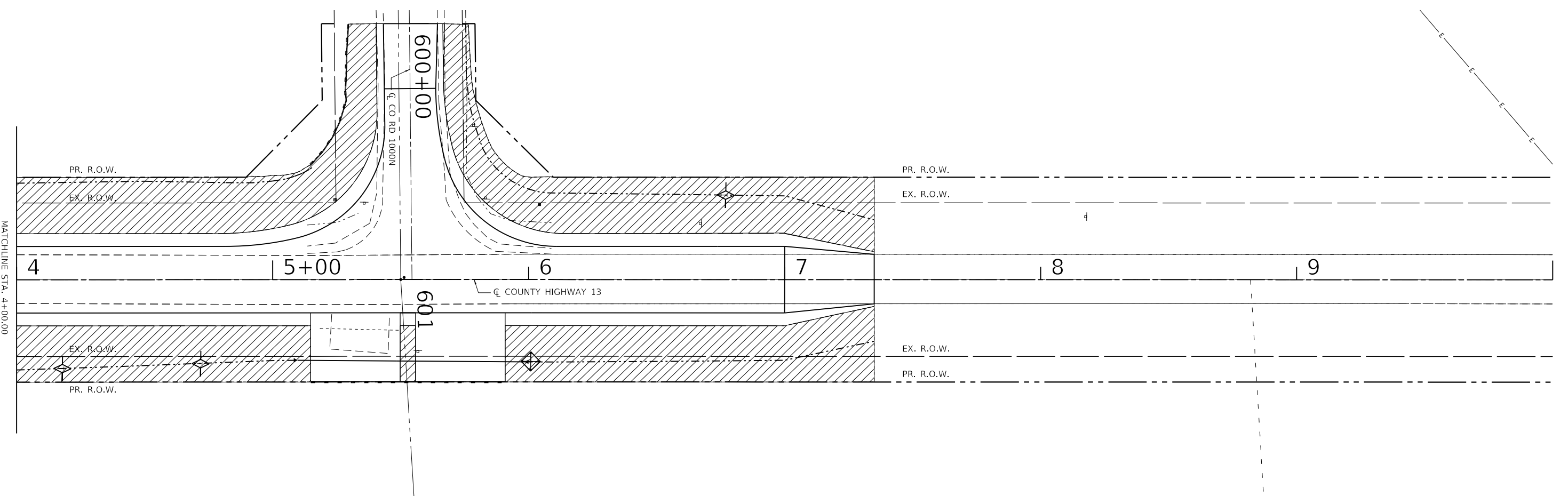
**COUNTY HIGHWAY 13 AT ROUTE 24 IMPROVEMENTS
RIGHT OF WAY PLAN**

F.A.S. RTE.	SECTION	COUNTY	TOTAL SHEETS	SHEET NO.
364	16-00091-02-RR	WOODFORD	24	15
CONTRACT NO. 89812				



EROSION CONTROL LEGEND

	HEAVY DUTY EROSION CONTROL BLANKET
	TEMPORARY DITCH CHECKS
	PERIMETER EROSION BARRIER
	INLET AND PIPE PROTECTION



FILE NAME = S:\237\2016\23716012.21\Woodford Co CH 13 et US24 Ph 11\CADD\CADD Sheets\0416012.sht-erosion control.dgn

MAURER-STUTZ
ENGINEERS SURVEYORS

USER NAME = bmwagehoft	DESIGNED - JDS	REVISED -
PLOT SCALE = 40.0000' / in.	DRAWN - CAD	REVISED -
PLOT DATE = 12/17/2021	CHECKED - GBM	REVISED -
	DATE - 12/10/2021	REVISED -

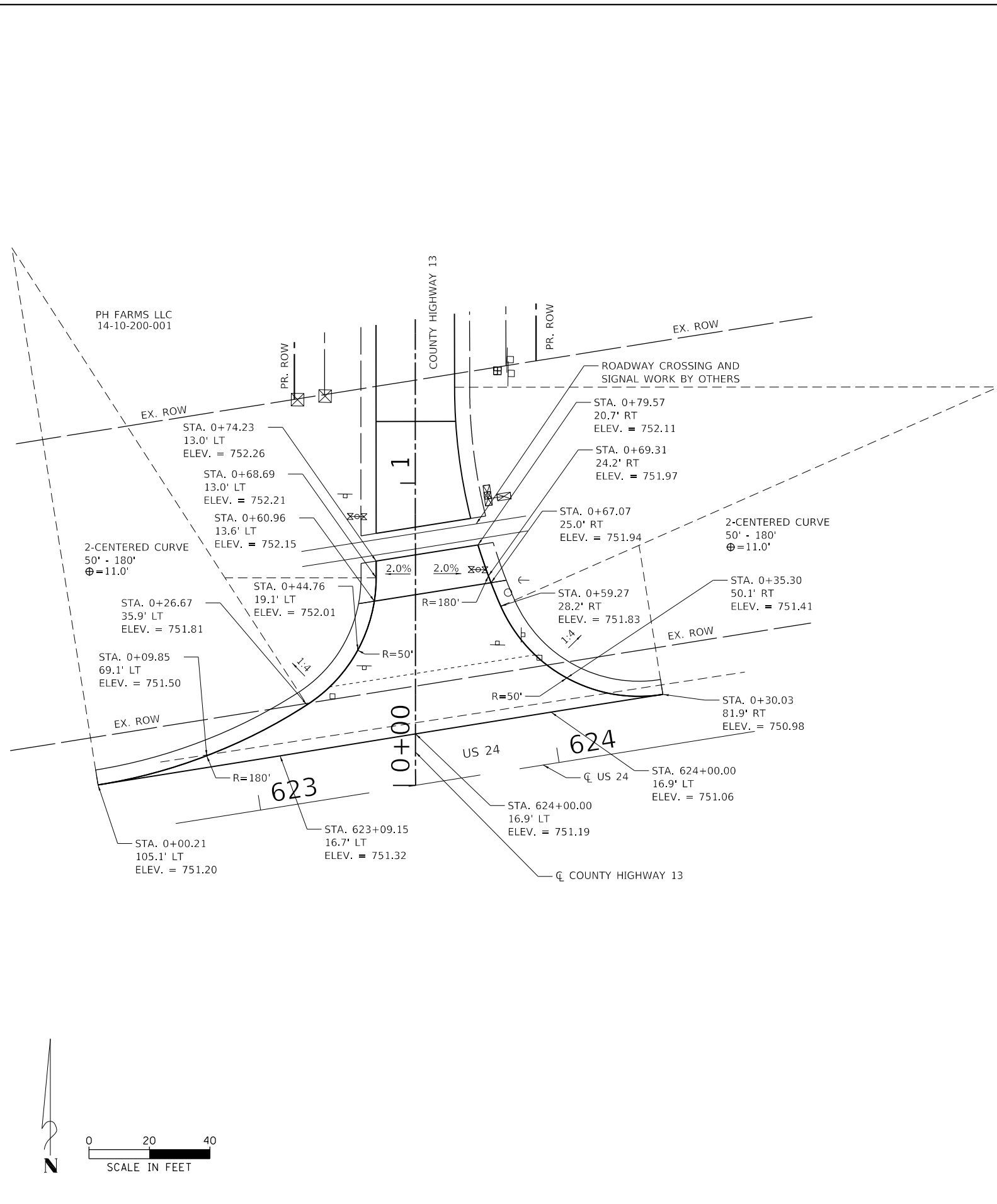
**WOODFORD COUNTY
HIGHWAY DEPARTMENT**

**COUNTY HIGHWAY 13 AT ROUTE 24 IMPROVEMENTS
EROSION CONTROL PLAN**

SHEET	OF	SHEETS	STA.	TO	STA.
-------	----	--------	------	----	------

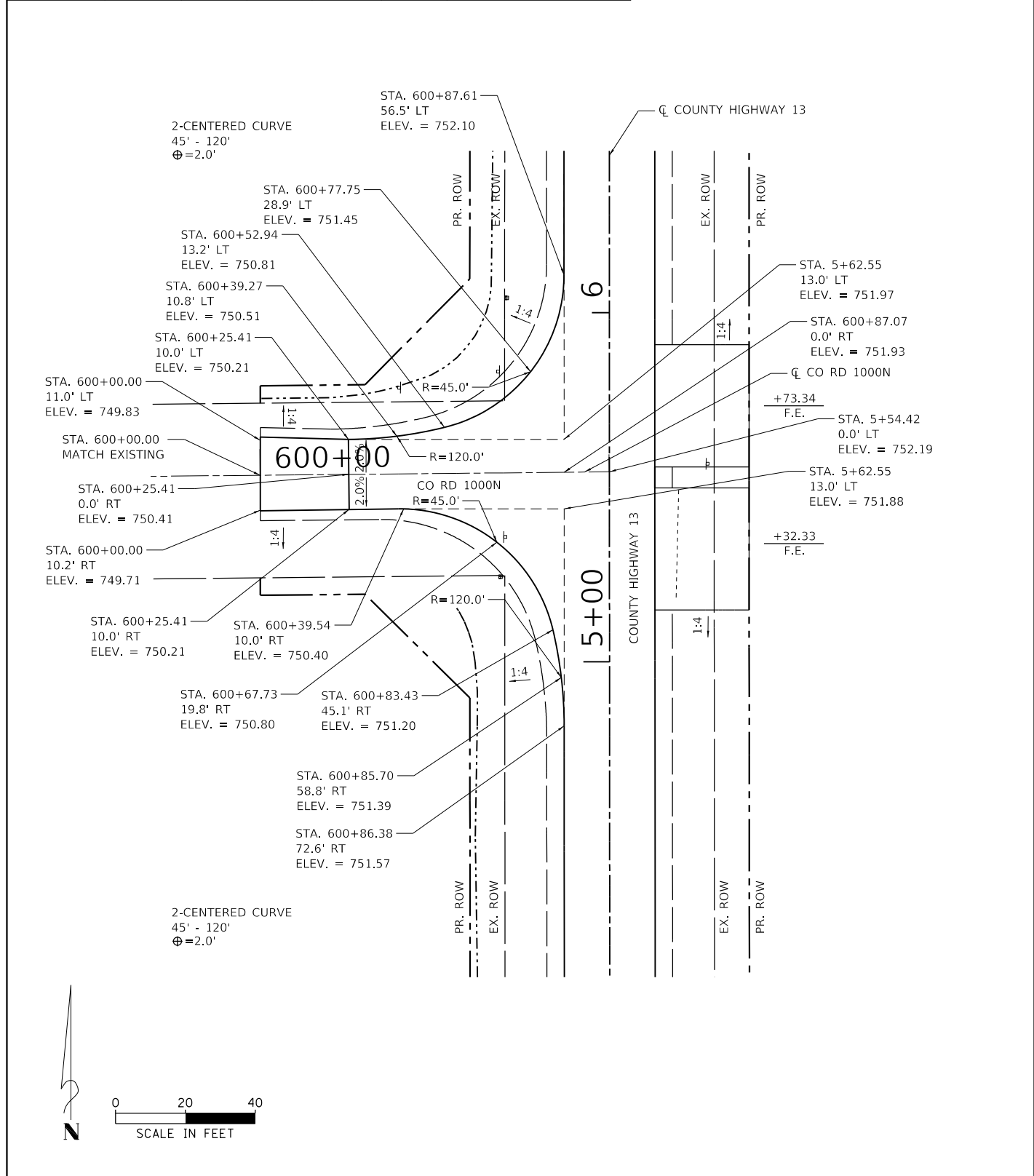
F.A.S. RTE.	SECTION	COUNTY	TOTAL SHEETS	SHEET NO.
364	16-00091-02-RR	WOODFORD	24	17
CONTRACT NO. 89812				
ILLINOIS FED. AID PROJECT				

FILE NAME: S:\237\2016\23716012\1\Woodford\CAD\ Sheets\0416012-shr-Intersection.dwg



PROPOSED PROFILE SAG VERTICAL CURVE						
STA.	VERTICAL KEY POINTS	ELEV.	GRADE	K VALUE	LENGTH	NOTE
600+00.00		750.14	0.49			
600+05.41	VPC	750.18	0.78	27.8		
600+35.41	VPI	750.42			60.00	PROFILE ELEVATION
600+35.41	VPI	750.58				PAVEMENT ELEVATION
600+65.41	VPT	751.30	2.93			
600+87.07		751.93	2.93			

PROPOSED DITCH PROFILES		
STA.	LT/RT	PR ELEV.
600+00.00	LT	747.95
600+66.80	LT	748.20
600+71.40	RT	746.85
600+86.38	RT	746.62



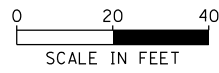
USER NAME = jdspliller	DESIGNED - JDS	REVISED -
DRAWN - CAD	REVISOR -	
PLOT SCALE = 40.0000' / in.	CHECKED - GBM	REVISOR -
PLOT DATE = 12/9/2021	DATE - 12/10/2021	REVISOR -

WOODFORD COUNTY
HIGHWAY DEPARTMENT

COUNTY HIGHWAY 13 AT ROUTE 24 IMPROVEMENTS
INTERSECTION DETAILS

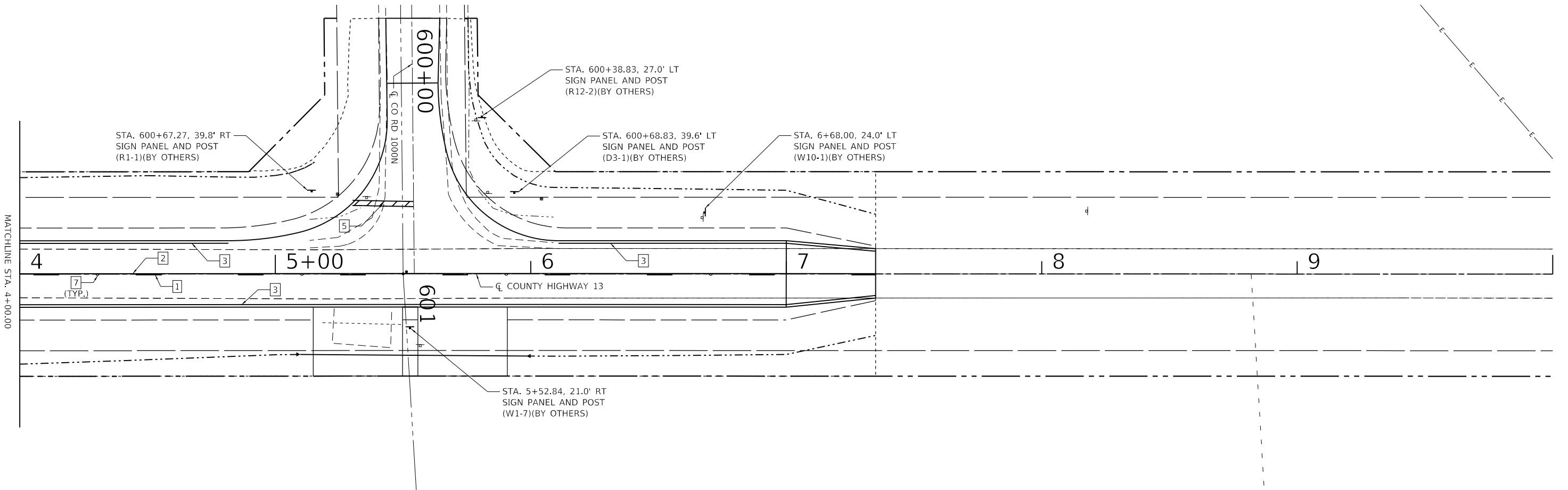
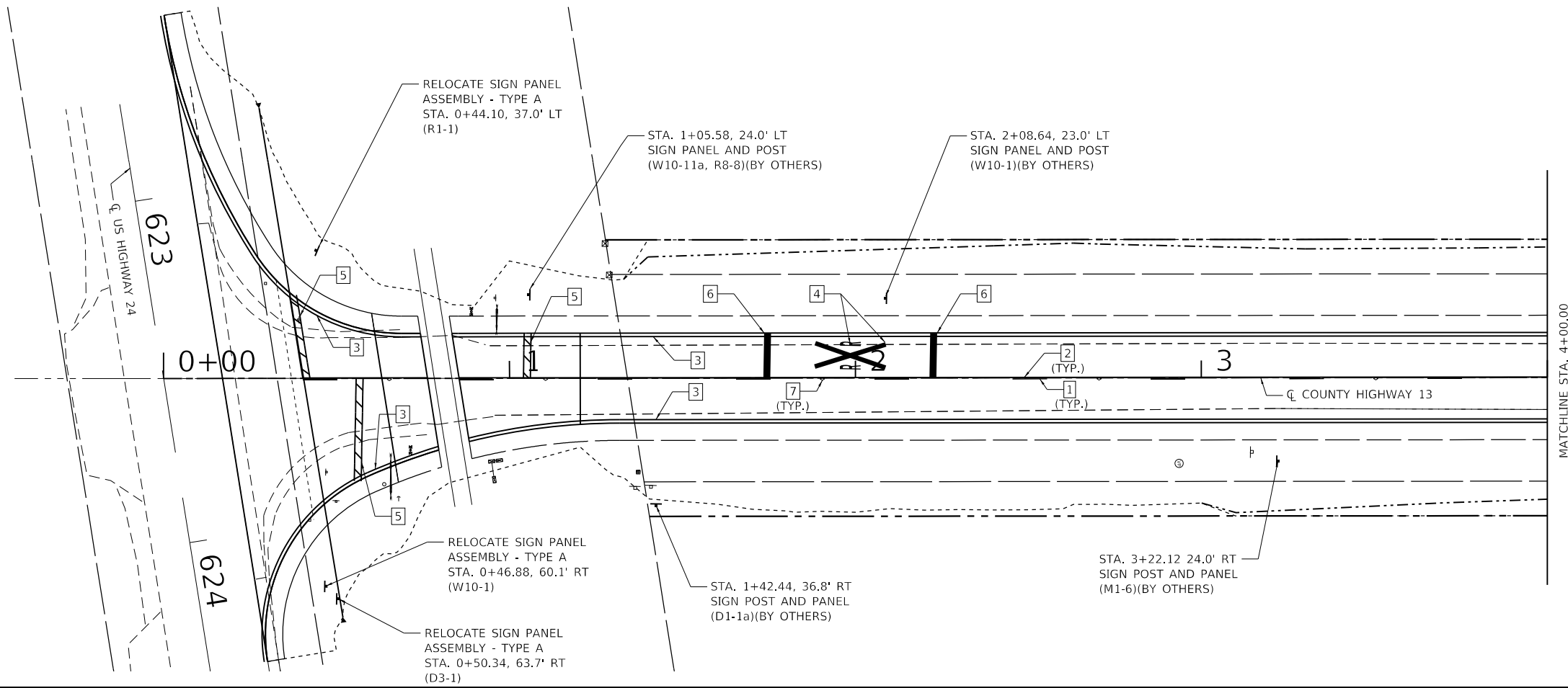
SHEET 1 OF 1 SHEETS STA. TO STA.

F.A.S. RTE.	SECTION	COUNTY	TOTAL SHEETS	SHEET NO.
364	16-00091-02-RR	WOODFORD	24	18
CONTRACT NO. 89812				

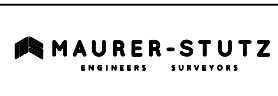


PAINT PAVEMENT MARKING LEGEND

1	4" SKIP-DASH (YELLOW)	10.0'	30.0'	10.0'
2	4" SOLID (YELLOW)			
3	4" SOLID (WHITE)			
4	LETTERS AND SYMBOLS			
5	24" STOP BAR (WHITE)			
6	24" SOLID (WHITE)			
7	RAISED REFLECTIVE PAVEMENT MARKER			



FILE NAME = S:\237\2016\23716012.21\Woodford Co CH 13.at US24 Ph. I11\CADD\CADD Sheets\0416012.sht-pavement.mark.sign.dwg



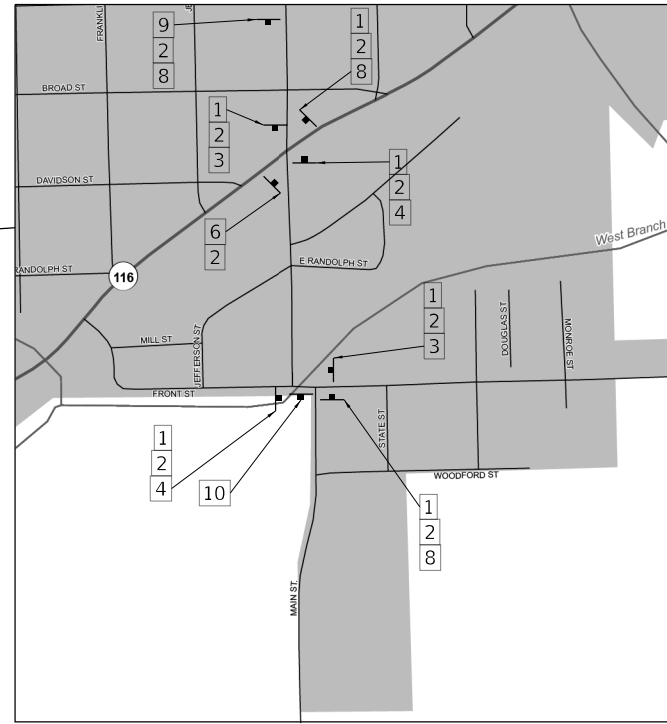
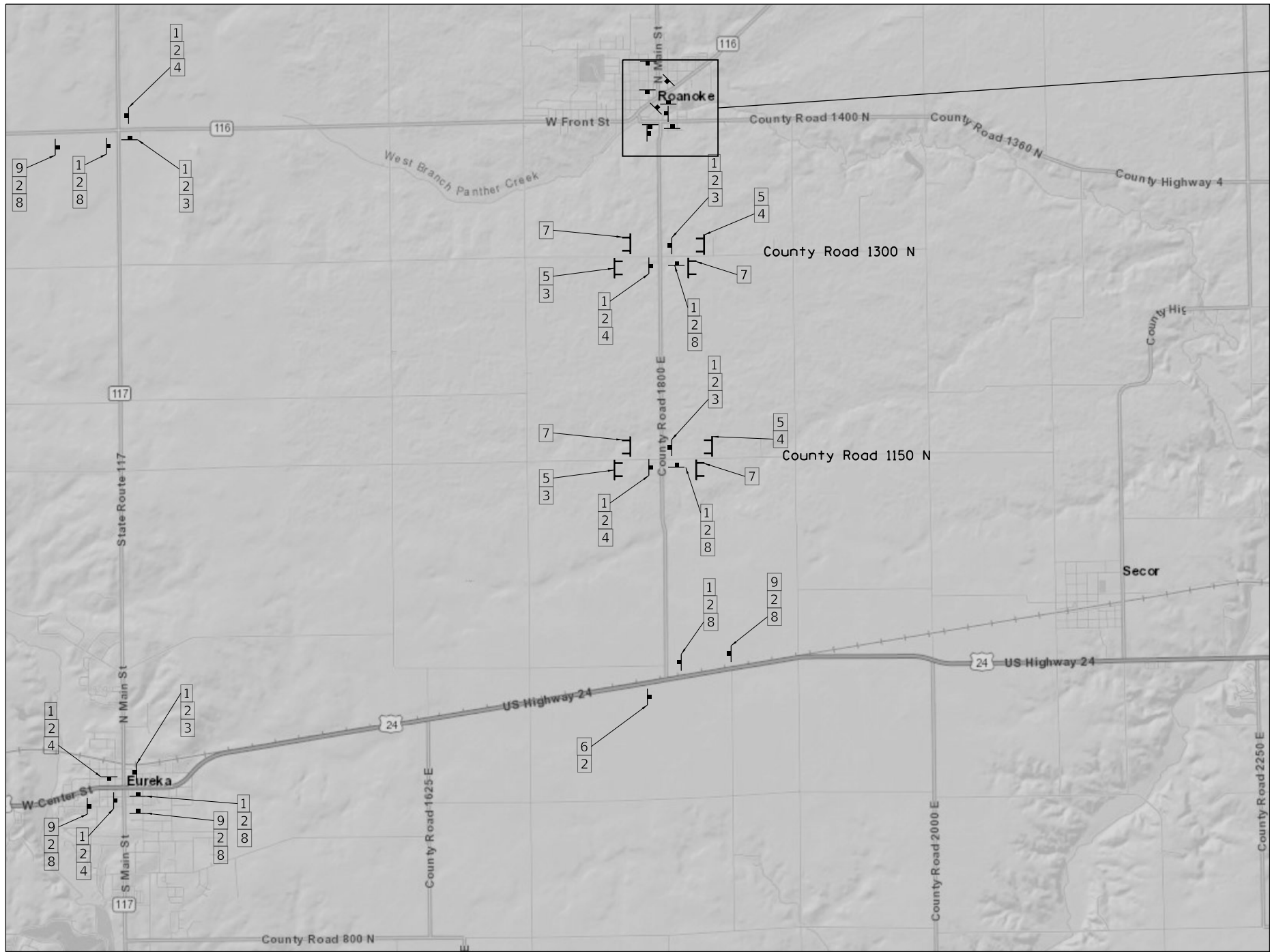
USER NAME = jdspliller	DESIGNED - JDS	REVISED -
PLOT SCALE = 40.0000' / in.	DRAWN - CAD	REVISED -
PLOT DATE = 12/9/2021	CHECKED - GBM	REVISED -
	DATE - 12/10/2021	REVISED -

**WOODFORD COUNTY
HIGHWAY DEPARTMENT**

**COUNTY HIGHWAY 13 AT ROUTE 24 IMPROVEMENTS
PAVEMENT MARKING AND TRAFFIC CONTROL SIGNS**

F.A.S. RTE.	SECTION	COUNTY	TOTAL SHEETS	SHEET NO.
364	16-00091-02-RR	WOODFORD	24	19
CONTRACT NO. 89812				
ILLINOIS FED. AID PROJECT				

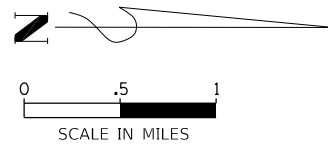
SHEET OF SHEETS STA. TO STA.



LEGEND

1 M4-8		6 M4-8a	
2 M1-6.1-8		7 48X30	
3 W1-6R		8 M6-3 ORANGE	
4 W1-6L		9 W20-2a	
5 R11-2		10 R11-3a	

TYPE III BARRICADE
 POST-MOUNTED SIGN



FILE NAME: S:\237\2016\23716812\1\Woodford_Co_CH_13_at_US24_Ph_III\CADD\Sheet\0416812-sh-1-Detour_1.dgn



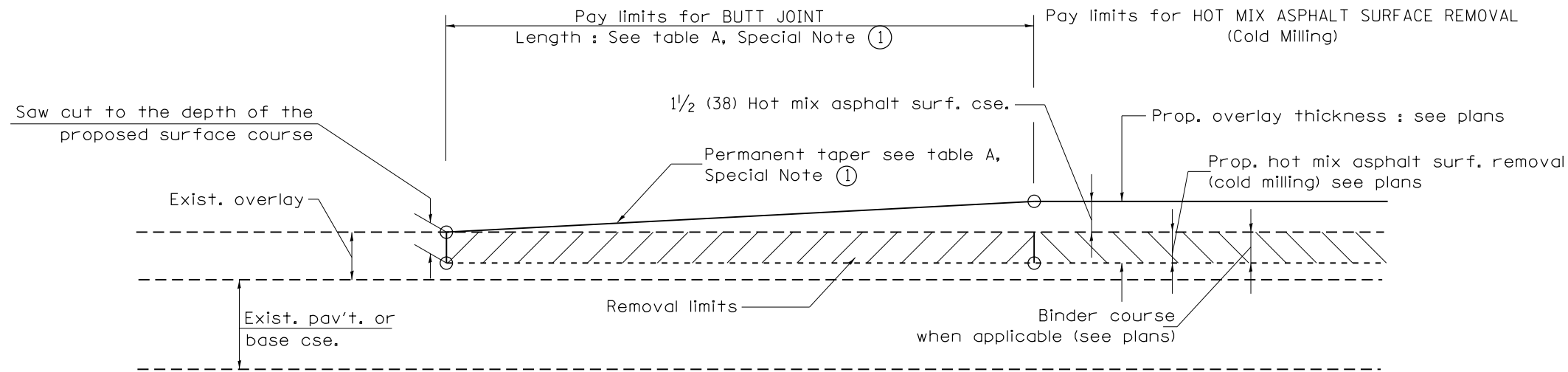
USER NAME = jdspliller	DESIGNED - JDS	REVISED -
PLOT SCALE = 48.0000' / in.	DRAWN - CAD	REVISED -
PLOT DATE = 12/9/2021	CHECKED - GBM	REVISED -
	DATE - 12/10/2021	REVISED -

**WOODFORD COUNTY
HIGHWAY DEPARTMENT**

**COUNTY HIGHWAY 13 AT ROUTE 24 IMPROVEMENTS
DETOUR PLAN**

SHEET	OF	SHEETS	STA.	TO	STA.
-------	----	--------	------	----	------

F.A.S. RTE.	SECTION	COUNTY	TOTAL SHEETS	SHEET NO.
364	16-00091-02-RR	WOODFORD	24	20
CONTRACT NO. 89812				



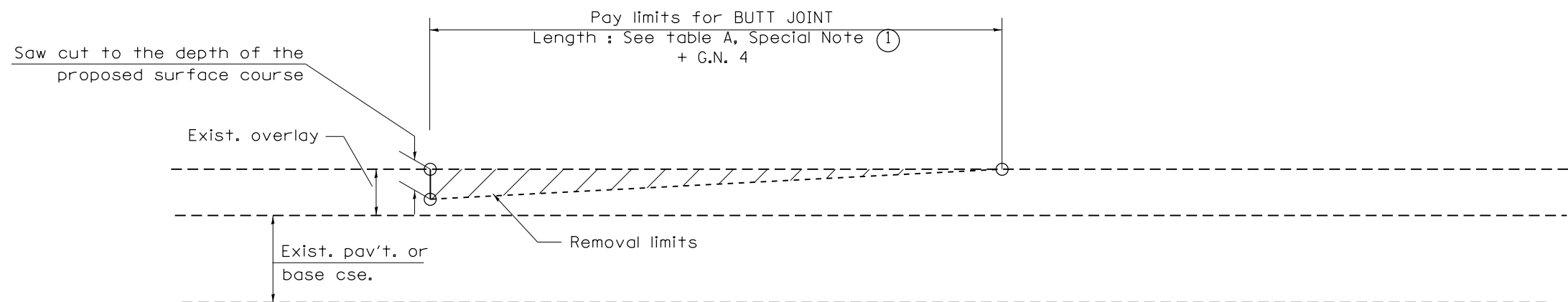
CASE 1 : WITH HOT MIX ASPHALT SURFACE REMOVAL (COLD MILLING)

**TABLE A
TAPER RATES**

SPECIAL NOTE NUMBER	ELEMENT	MAINLINE INTERSTATES & 4-LANE EXPRESSWAYS	ALL OTHERS
①	BUTT JOINT TAPER RATE	1:280	1:200
②	TEMPORARY RAMP TAPER RATE	1:40	1:40

GENERAL NOTES

1. The work shall be done in accordance with Article 406.08 and the Special Provision for Butt Joints.
2. The pavement surface to be removed may be either bituminous or P.C. concrete. The work shall be performed in accordance with Article 440.04 and the Special Provisions for Butt Joints.
3. The saw cut joints shall be primed just prior to the placing of bituminous material. The work will be in accordance with the applicable portions of Article 406.05.
4. The length of butt joint is based on the taper rate times change in cold milling depth within the butt joint pay limits, unless otherwise indicated.
5. Temporary ramps are paid for separately and not included in the cost of the butt joints.



CASE 2 : NO HOT MIX ASPHALT SURFACE REMOVAL (COLD MILLING)

All dimensions are in inches (millimeters) unless otherwise noted.

FILE NAME: S:\237\2016\23716812\1\Woodford\WOOD Sheets\0416812-sh-butt jt detail.dgn



USER NAME = jdspliller	DESIGNED - JDS	REVISED -
PLOT SCALE = 100.0000' / 1in.	DRAWN - CAD	REVISED -
PLOT DATE = 12/9/2021	CHECKED - GBM	REVISED -
	DATE - 12/10/2021	REVISED -

**WOODFORD COUNTY
HIGHWAY DEPARTMENT**

**COUNTY HIGHWAY 13 AT ROUTE 24 IMPROVEMENTS
BUTT JOINT DETAIL**

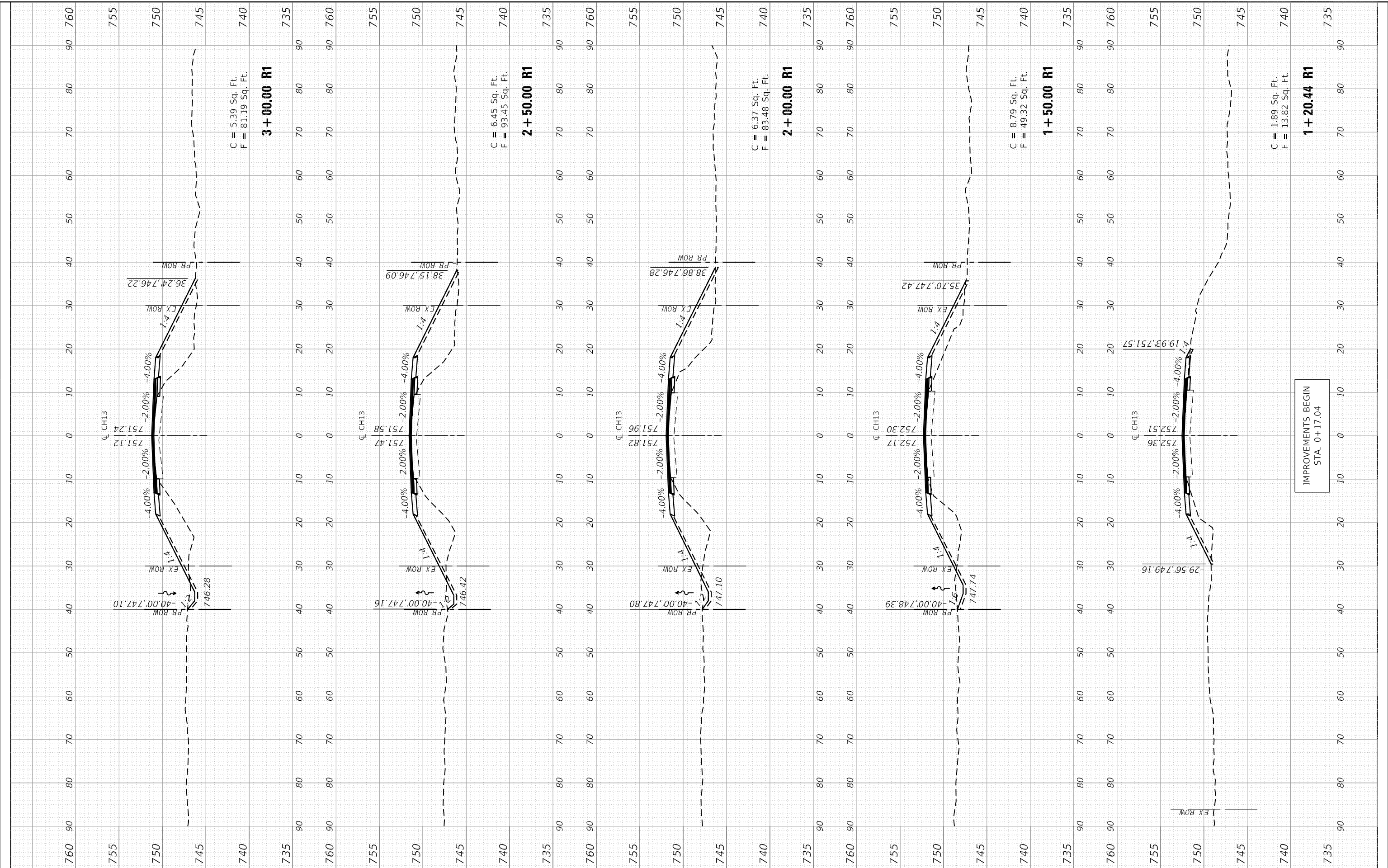
SHEET OF SHEETS STA. TO STA.

F.A.S. RTE.	SECTION	COUNTY	TOTAL SHEETS	SHEET NO.
364	16-00091-02-RR	WOODFORD	24	21
CONTRACT NO. 89812				

FINAL SURVEY	SURVEYED	BY	DATE
NOTE BOOK	PLOTTED		
AREAS CHECKED	TEMPLATE		
AREAS CHECKED	AREAS CHECKED		

ORIGINAL SURVEY	SURVEYED	BY	DATE
NOTE BOOK	PLOTTED		
AREAS CHECKED	TEMPLATE		
AREAS CHECKED	AREAS CHECKED		

FILE NAME = S:\237-2016\2371601221 Woodford Co Ch 13 st US24 Ph 11\CADD\CADD Sheets\016012-plt-xsc-CH13_US24.dgn



C = 5.39 Sq. Ft.
F = 81.19 Sq. Ft.

3 + 00.00 R1

C = 6.45 Sq. Ft.
F = 93.45 Sq. Ft.

2 + 50.00 R1

C = 6.37 Sq. Ft.
F = 83.48 Sq. Ft.

2 + 00.00 R1

C = 8.79 Sq. Ft.
F = 49.32 Sq. Ft.

1 + 50.00 R1

C = 1.89 Sq. Ft.
F = 13.82 Sq. Ft.

1 + 20.44 R1

IMPROVEMENTS BEGIN
STA. 0+17.04



USER NAME = jdspller	DESIGNED - JDS	REVISED -
	DRAWN - CAD	REVISED -
PLOT SCALE = 20.0000' / in.	CHECKED - GBM	REVISED -
PLOT DATE = 12/9/2021 11:57:40 AM	DATE - 12/10/2021	REVISED -

**WOODFORD COUNTY
HIGHWAY DEPARTMENT**

**COUNTY HIGHWAY 13 RECONSTRUCTION
CROSS SECTIONS**

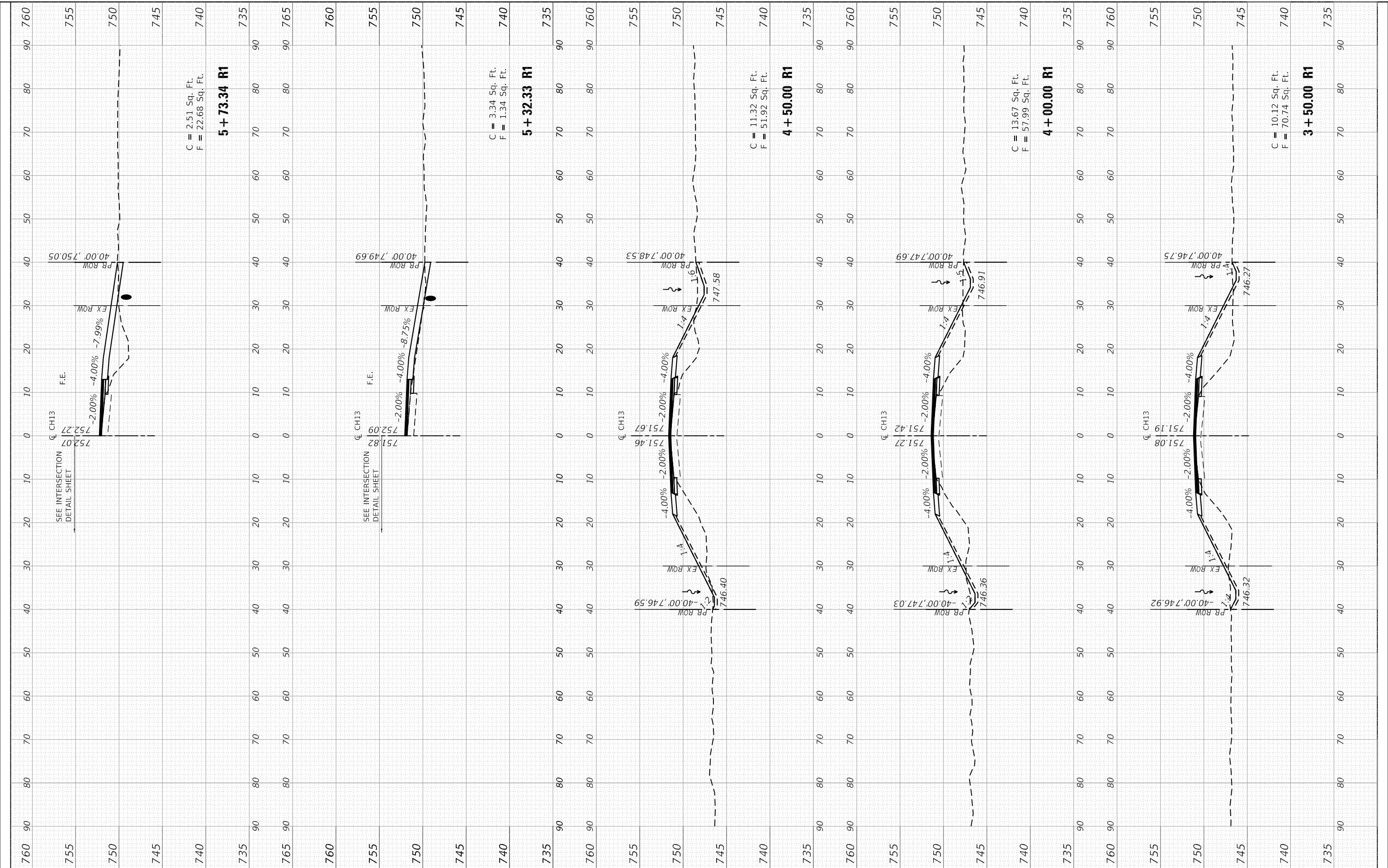
SCALE: SHEET 1 OF 3 SHEETS STA. 1+20.44 R1 TO STA. 3+00.00 R1

F.A.S. RTE.	SECTION	COUNTY	TOTAL SHEETS	SHEET NO.
364	16-00091-02-RR	WOODFORD	24	22
CONTRACT NO. 89812				

FINAL SURVEY	SURVEYED	BY	DATE
NOTE BOOK	PLOTTED		
AREAS CHECKED	TEMPLATE		
AREAS CHECKED	AREAS CHECKED		

ORIGINAL SURVEY	SURVEYED	BY	DATE
NOTE BOOK	PLOTTED		
AREAS CHECKED	TEMPLATE		
AREAS CHECKED	AREAS CHECKED		

FILE NAME = S:\237-2016\237160121 Woodford Co Ch 13 st US24 Ph 11\CADD\CADD Sheets\0416012-sht-xse-CH13_US24.dgn



	USER NAME = jdsptiller	DESIGNED - JDS	REVISED -	WOODFORD COUNTY HIGHWAY DEPARTMENT	COUNTY HIGHWAY 13 RECONSTRUCTION CROSS SECTIONS			F.A.S. RTE. 364	SECTION 16-00091-02-RR	COUNTY WOODFORD	TOTAL SHEETS 24	SHEET NO. 23
	PLOT SCALE = 20.0000' / in.	CHECKED - GBM	REVISED -		SCALE:	SHEET 2	OF 3 SHEETS	STA. 3+50.00 R1 TO STA. 5+73.34 R1	CONTRACT NO. 89812			
PLOT DATE = 12/9/2021	11:57:41 AM	DATE TO STA: 5+73.34 R1	REVISED -									

FINAL SURVEY	SURVEYED	BY	DATE
NOTE BOOK	PLOTTED		
AREAS CHECKED	TEMPLATE		
AREAS CHECKED	AREAS CHECKED		

ORIGINAL SURVEY	SURVEYED	BY	DATE
NOTE BOOK	PLOTTED		
AREAS CHECKED	TEMPLATE		
AREAS CHECKED	AREAS CHECKED		

FILE NAME = S:\237-2016\23716012.21 Woodford Co Ch 13 st US24 Ph 11\CADD\CADD Sheets\016012-plt-xse-CH13_US24.dgn



USER NAME = jdsptiller	DESIGNED - JDS	REVISED -
PLOT SCALE = 20.0000' / in.	DRAWN - CAD	REVISED -
PLOT DATE = 12/9/2021 11:57:41 AM	CHECKED - GBM	REVISED -
	DATE - 12/10/2021	REVISED -

**WOODFORD COUNTY
HIGHWAY DEPARTMENT**

**COUNTY HIGHWAY 13 RECONSTRUCTION
CROSS SECTIONS**

SCALE: SHEET 3 OF 3 SHEETS STA. 6+50.00 R1 TO STA. 7+35.00 R1

F.A.S. RTE.	SECTION	COUNTY	TOTAL SHEETS	SHEET NO.
364	16-00091-02-RR	WOODFORD	24	24
			CONTRACT NO. 89812	

