

06-17-2022 LETTING ITEM 109

FOR INDEX OF SHEETS, SEE SHEET NO. 2

FOR INDEX OF HIGHWAY STANDARDS, SEE SHEET NO. 2

F.A.U. RTE.	SECTION	COUNTY	TOTAL SHEETS	SHEET NO.
1677	20-00025-00-RS	LAKE	25	1
		ILLINOIS	CONTRACT NO. 61H79	

STATE OF ILLINOIS
DEPARTMENT OF TRANSPORTATION

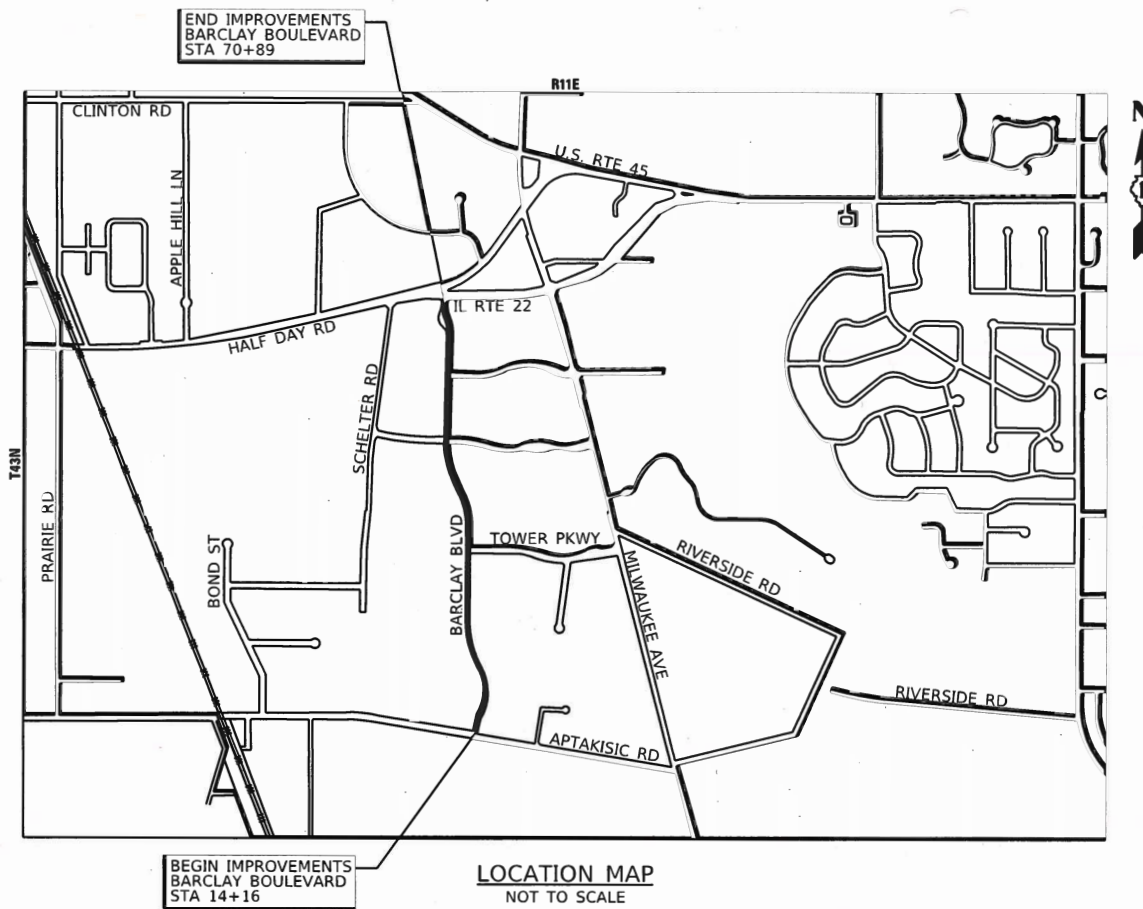
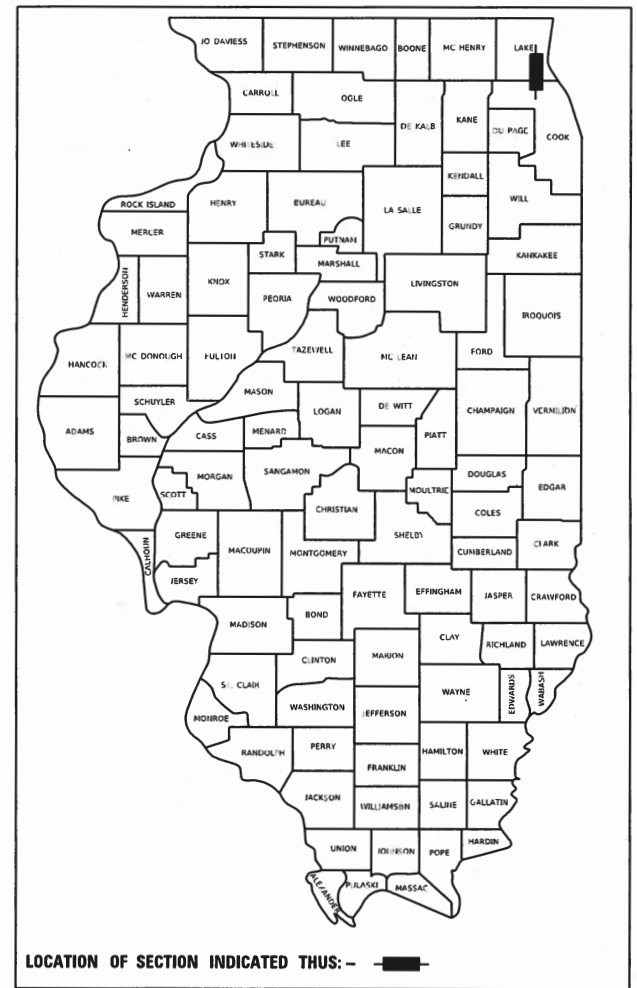
PLANS FOR PROPOSED FEDERAL AID HIGHWAY

FAU 1677 (BARCLAY BOULEVARD)
APTAKISIC ROAD TO HALF DAY ROAD
RESURFACING

SECTION: 20-00025-00-RS
PROJECT: 229J(968)
VILLAGE OF LINCOLNSHIRE
LAKE COUNTY
C-91-121-22

TRAFFIC DATA

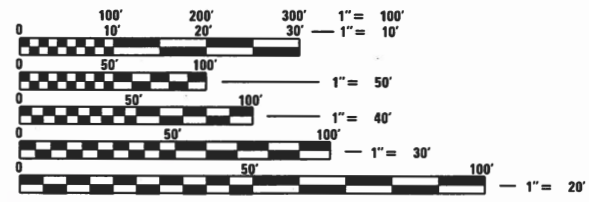
BARCLAY BOULEVARD
POSTED SPEED LIMIT = 30 MPH
2019 AADT = 4950
FUNCTIONAL CLASSIFICATION = MAJOR COLLECTOR



END IMPROVEMENTS
BARCLAY BOULEVARD
STA 70+89

BEGIN IMPROVEMENTS
BARCLAY BOULEVARD
STA 14+16

LOCATION MAP
NOT TO SCALE



FULL SIZE PLANS HAVE BEEN PREPARED USING STANDARD ENGINEERING SCALES. REDUCED SIZED PLANS WILL NOT CONFORM TO STANDARD SCALES. IN MAKING MEASUREMENTS ON REDUCED PLANS, THE ABOVE SCALES MAY BE USED.

J.U.L.I.E. DESIGN STAGE REQUEST
DIG. No. A2382968



CONTACT JULIE AT 811 OR 800-892-0123 WITH THE FOLLOWING:
COUNTY = LAKE
CITY-TWNSHP. = LINCOLNSHIRE
SEC. & 1/4 SEC. NO. = S15/S22/S27 T43N R11E
48 HOURS (2 working days) BEFORE YOU DIG

GROSS LENGTH = 5,673 FT. = 1.074 MILE
NET LENGTH = 5,673 FT. = 1.074 MILE

62-062227
LICENSED PROFESSIONAL ENGINEER OF ILLINOIS
3-4-22
PROJECT MANAGER
LICENSE EXPIRES 11-30-2025

STATE OF ILLINOIS
DEPARTMENT OF TRANSPORTATION
DIVISION OF HIGHWAYS

APPROVED: 3-4-22
VILLAGE OF LINCOLNSHIRE, VILLAGE ENGINEER

PASSED: APRIL 6, 2022
DISTRICT 1 ENGINEER OF LOCAL ROADS AND STREETS

RELEASING FOR BID BASED ON LIMITED REVIEW: APRIL 6, 2022
REGIONAL ENGINEER

PRINTED BY THE AUTHORITY OF THE STATE OF ILLINOIS

FEDERAL AID PROGRAM ENGINEER: CARMEN E. RAMOS, P.E. SCHAUMBURG, IL

CONTRACT NO. 61H79

B&W PROJECT NO.: 211456 DATE: 4/4/2022

INDEX OF SHEETS

1	COVER SHEET
2	INDEX OF SHEETS AND HIGHWAY STANDARDS
3	GENERAL NOTES
4 - 9	SUMMARY OF QUANTITIES
10	SCHEDULE OF QUANTITIES
11	TYPICAL SECTIONS
12 - 17	ROADWAY PLAN BARCLAY BOULEVARD
18	FRAMES AND LIDS ADJUSTMENT WITH MILLING (BD-08)
19	PAVEMENT PATCHING FOR HMA SURFACED PAVEMENT (BD-22)
20	CURB OR CURB AND GUTTER REMOVAL AND REPLACEMENT (BD-24)
21	BUTT JOINT AND HMA TAPER (BD-32)
22	TRAFFIC CONTROL & PROTECTION FOR SIDE ROADS, INTERSECTIONS, & DRIVEWAYS (TC-10)
23	DISTRICT ONE TYPICAL PAVEMENT MARKINGS (TC-13)
24	SHORT-TERM PAVEMENT MARKING LETTERS AND SYMBOLS (TC-16)
25	ARTERIAL ROAD INFORMATION SIGN (TC-22)

HIGHWAY STANDARDS

000001-08	STANDARD SYMBOLS, ABBREVIATIONS AND PATTERNS
001001-02	AREAS OF REINFORCEMENT BARS
001006	DECIMAL OF AN INCH AND OF A FOOT
280001-07	TEMPORARY EROSION CONTROL SYSTEMS
424021-06	DEPRESSED CORNER FOR SIDEWALKS
442201-03	CLASS C AND D PATCHES
606001-08	CONCRETE CURB TYPE B AND COMBINATION CONCRETE CURB AND GUTTER
701006-05	OFF-RD OPERATIONS, 2L, 2W, 15' (4.5 m) TO 24" (600 mm) FROM PAVEMENT EDGE
701011-04	OFF-RD MOVING OPERATIONS, 2L, 2W, DAY ONLY
701301-04	LANE CLOSURE, 2L, 2W, SHORT TIME OPERATIONS
701311-03	LANE CLOSURE 2L, 2W MOVING OPERATIONS - DAY ONLY
701501-06	URBAN LANE CLOSURE, 2L, 2W, UNDIVIDED
701701-10	URBAN LANE CLOSURE, MULTILANE INTERSECTION
701311-03	TRAFFIC CONTROL DEVICES
720001-01	SIGN PANEL MOUNTING DETAILS
720006-04	SIGN PANEL ERECTION DETAILS
720011-01	METAL POSTS FOR SIGNS, MARKERS & DELINEATORS
729001-01	APPLICATIONS OF TYPES A & B METAL POSTS (FOR SIGNS & MARKERS)
780001-05	TYPICAL PAVEMENT MARKINGS

DISTRICT DETAILS

BD-08	FRAMES AND LIDS ADJUSTMENT WITH MILLING
BD-22	PAVEMENT PATCHING FOR HMA SURFACED PAVEMENT
BD-24	CURB OR CURB AND GUTTER REMOVAL AND REPLACEMENT
TC-10	TRAFFIC CONTROL & PROTECTION FOR SIDE ROADS, INTERSECTIONS, & DRIVEWAYS
TC-13	DISTRICT ONE TYPICAL PAVEMENT MARKINGS
TC-16	SHORT-TERM PAVEMENT MARKING LETTERS AND SYMBOLS
TC-22	ARTERIAL ROAD INFORMATION SIGN

STATE OF ILLINOIS - PROFESSIONAL DESIGN FIRM
 LICENSE NO. - 184-001121 - EXPIRES 4/30/2020
 morning 4/4/2022 2:19:22 PM
 P:\CADD\Projects\211456-GenNotes\211456-SHT-GenNotes_01.dgn
 FILE NAME: P:\CADD\Projects\211456-GenNotes\211456-SHT-GenNotes_01.dgn



USER NAME = morning	DESIGNED - MH	REVISED -
	DRAWN - MJO	REVISED -
PLOT SCALE = 80.0000' / in	CHECKED -	REVISED -
PLOT DATE = 4/4/2022	DATE = 4/4/2022	FILE = 211456-SHT-GenNotes_01.dgn

STATE OF ILLINOIS
DEPARTMENT OF TRANSPORTATION

INDEX OF SHEETS AND HIGHWAY STANDARDS	
SCALE: NTS	SHEET 1 OF 1 SHEETS STA. TO STA.

F.A.U. RTE.	SECTION	COUNTY	TOTAL SHEETS	SHEET NO.
1677	20-00025-00-RS	LAKE	25	2
CONTRACT NO. 61H79				
ILLINOIS HIGHWAY PROJECT 20-00025-00-RS				

GENERAL NOTES

1. ALL CONSTRUCTION SHALL BE DONE IN ACCORDANCE WITH THE DETAILS IN THE PLANS, THE SPECIAL PROVISIONS INCLUDED IN THE CONTRACT DOCUMENTS, AND THE EDITION ADOPTED JANUARY 1, 2022 OF THE "THE STANDARD SPECIFICATIONS FOR ROAD AND BRIDGE CONSTRUCTION" (REFERRED TO AS THE "STANDARD SPECIFICATIONS"), THE "SUPPLEMENTAL SPECIFICATIONS AND RECURRING SPECIAL PROVISIONS", THE "MANUAL ON UNIFORM TRAFFIC CONTROL DEVICES FOR STREETS AND HIGHWAYS 2009 EDITION", THE "MANUAL OF TEST PROCEDURES FOR MATERIALS, 2019 EDITION" AND THE "STANDARD SPECIFICATIONS FOR WATER AND SEWER MAIN CONSTRUCTION IN ILLINOIS, 8TH EDITION".
2. THE LOCATIONS OF PUBLIC AND PRIVATE UTILITIES SHOWN ON THE PLANS REPRESENTS ONLY THE OPINION OF THE VILLAGE AND IS ONLY INCLUDED FOR THE CONVENIENCE OF THE BIDDER AND THE ACCURACY IS NOT GUARANTEED. THE CONTRACTOR SHALL BE RESPONSIBLE FOR THE PROTECTION OF ALL UNDERGROUND OR SURFACE UTILITIES, INCLUDING SPRINKLER SYSTEMS, EVEN THOUGH THEY MAY NOT BE SHOWN ON THE PLANS. THE CONTRACTOR SHALL ALSO VERIFY THE DEPTHS OF THE EXISTING UTILITIES IF NECESSARY TO VERIFY THAT GRADE CONFLICTS WILL NOT OCCUR WITH ANY PROPOSED UTILITIES PRIOR TO CONSTRUCTION AND ORDERING ANY MATERIALS. ANY RELOCATION OR LOWERING OF UTILITIES SHALL BE COORDINATED BY THE CONTRACTOR.
3. THE CONTRACTOR SHALL NOTIFY THE VILLAGE PUBLIC WORKS ADMINISTRATOR AT LEAST 48 HOURS IN ADVANCE OF BEGINNING WORK TO OBTAIN VILLAGE UTILITY LOCATIONS.
4. THE CONTRACTOR MAY OBTAIN MUNICIPAL WATER IN BULK, AT NO CHARGE, AS LONG AS THERE IS NOT A "WATERING BAN" IN EFFECT. THE INDISCRIMINATE USE OF FIRE HYDRANTS IS STRICTLY PROHIBITED. WATER FOR CONSTRUCTION SHALL BE METERED OR OTHERWISE ACCOUNTED FOR AND A DAILY LOG MAINTAINED. THE CONTRACTOR SHALL PROVIDE THE WATER TRUCK AND DRIVER REQUIRED TO OBTAIN AND TRANSPORT THIS WATER. THE VILLAGE RESERVES THE RIGHT TO RESTRICT OR REFUSE THE USE OF VILLAGE WATER IF DEEMED NECESSARY.
5. ACCESS TO PRIVATE DRIVEWAYS SHALL BE PROVIDED AT ALL TIMES EXCEPT DURING ACTUAL CONSTRUCTION ADJACENT THERE TO. TEMPORARY RAMPS SHALL BE CONSTRUCTED AS NEEDED TO PROVIDE SUCH ACCESS, UTILIZING CRUSHED STONE OR CRUSHED GRAVEL.
6. IT WILL BE THE CONTRACTOR'S RESPONSIBILITY TO NOTIFY RICHARD WILLIAM FROM PACE (847) 228-3584 AT LEAST 7 BUSINESS DAYS PRIOR TO WORK ADJACENT TO BUS STOPS.
7. ALL COMMERCIAL PROPERTIES SHALL BE PROVIDED AT LEAST ONE INGRESS AND ONE EGRESS EITHER ON THE MAINLINE OR A SIDE STREET AT ALL TIMES. ACCESS TO LOADING DOCS SHALL BE MAINTAINED. THE CONTRACTOR SHALL COORDINATE DRIVEWAY CLOSURES/MODIFICATIONS WITH THE LOCAL BUSINESSES AND THE ENGINEER. COMMERCIAL DRIVEWAYS WHICH CANNOT BE CLOSED, AS DETERMINED BY THE ENGINEER, SHALL BE CONSTRUCTED IN STAGES ALLOWING FOR ACCESS AT ALL TIMES, HIGH EARLY STRENGTH CONCRETE MAY BE USED.
8. ALL REMOVED SIGNS SHALL BE DELIVERED TO THE VILLAGE OF LINCOLNSHIRE PUBLIC WORKS, 205 SCHELTER ROAD. THE DATE AND TIME SHALL BE COORDINATED BY THE ENGINEER. ALL EXISTING SIGN POSTS SHALL BE DISCARDED IN A APPROPRIATE MANNER BY THE CONTRACTOR.
9. A 1/2-INCH THICK EXPANSION JOINT SHALL BE PROVIDED AT THE JUNCTION OF THE DRIVEWAY APRON AND CURB, AND AT THE JUNCTION OF THE DRIVEWAY APRON AND THE SIDEWALK.
10. THE CONTRACTOR SHALL CONTACT THE LOCAL AGENCY MATERIAL INSPECTOR AT LEAST 48 HOURS PRIOR TO ANY CONCRETE OR HOT-MIX ASPHALT MATERIAL DELIVERIES.
11. ALL FRAME AND LID CASTINGS LOCATED WITHIN THE PAVEMENT WHICH REQUIRE RESETTING TO FINISH GRADE SHALL BE BACKFILLED WITH CLASS SI CONCRETE AND ALLOWED TO CURE FOR 72 HOURS PRIOR TO PLACEMENT OF SURFACE COURSE. CLASS PP CONCRETE SHALL BE USED IF PLACEMENT OF SURFACE COURSE IS PLANNED IN LESS THAN 72 HOURS. HMA MATERIALS WILL NOT BE ALLOWED AS BACKFILL AROUND AN ADJUSTED CASTING. THIS WORK SHALL APPLY TO ALL CASTINGS ADJUSTED OR RECONSTRUCTED AS PART OF THIS CONTRACT, WHETHER PAID FOR SEPARATELY OR INCLUDED IN OTHER CONTRACT WORK.
12. THE TOP OF ALL NEW CURB BOXES ON DRAINAGE STRUCTURES SHALL BE STAMPED "DUMP NO WASTE - DRAINS TO RIVER".
13. ON STREETS TO BE FULL WIDTH MILLED (2" OR MORE), THE EXISTING STRUCTURES IN THE PAVEMENT SHALL BE ADJUSTED IN ACCORDANCE WITH THE IDOT DETAIL "DETAILS FOR FRAMES AND LIDS ADJUSTMENT WITH MILLING".
14. WHEN MILLED PAVEMENT IS OPEN TO TRAFFIC, THE MAXIMUM GRADE DIFFERENTIAL BETWEEN PASSES OF THE MILLING MACHINE SHALL NOT EXCEED 1 1/2 INCHES WHERE THE SPEED LIMIT IS 45 MPH OR LESS, AND SHALL NOT EXCEED 1 INCH WHERE THE SPEED LIMIT IS OVER 45 MPH. A MAXIMUM GRADE DIFFERENCE OF 3 INCHES MAY BE ALLOWED IF THE EDGE OF THE MILLING IS SLOPED A MINIMUM OF 1:3 (V:H), AS DETERMINED BY THE ENGINEER.
15. GEOTECHNICAL FABRIC AT THE LOCATIONS INDICATED FOR SOILS THAT TEND TO BE UNSTABLE AND/OR UNSUITABLE FOR GROUND STABILIZATION AND/OR AGGREGATE SUBGRADE IMPROVEMENT (CU YD) HAVE BEEN PROVIDED FOR USE. THE ACTUAL NEED FOR REMOVAL AND REPLACEMENT WITH ABOVE ITEM WILL BE DETERMINED IN THE FIELD AT THE TIME OF CONSTRUCTION BY THE GEOTECHNICAL ENGINEER. ALL POTENTIALLY UNSTABLE SOILS SHOULD BE TESTED WITH A STATIC OR DYNAMIC CONE PENETROMETER AND TREATED IN ACCORDANCE WITH ARTICLE 301.04 OF THE SSRBC AND IDOT SUBGRADE STABILITY MANUAL. IF UNSTABLE AND/OR UNSUITABLE SOILS ARE NOT ENCOUNTERED, THEN THE QUANTITY SHALL BE DEDUCTED AND NO ADDITIONAL COMPENSATION WILL BE DUE TO THE CONTRACTOR.
16. THE CONTRACTOR SHALL DOCUMENT EXISTING PAVEMENT MARKING LOCATION PRIOR TO MILLING.

COMMITMENTS

THERE ARE NO COMMITMENTS ON THIS PROJECT.

17. THE VILLAGE USES SEEDING FOR RESTORATION BEHIND CURB AND GUTTER REPLACEMENT DISTRICT 1 DETAIL BD-24 SHALL BE MODIFIED TO USE SEEDING, CLASS 1A

STATE OF ILLINOIS - PROFESSIONAL DESIGN FIRM
 LICENSE NO. - 184-001121 - EXPIRES 4/30/2020
 morning 4/4/2022 2:19:23 PM
 FILE: \\miller-pul-usc02\11456-8srd\by Blvd_STP_Reg\CAD\Sheets\211456-SHT-GenNotes_01.dgn
 ...\\pctr\p\pdf\BW_Default.plt
 ...\\CAD\PI\ots\211456_Per.txd
 P:\LINC\211456-Barclay Blvd STP Res\CAD\Sheets\211456-SHT-GenNotes_01.dgn



USER NAME = mornjg	DESIGNED - MH	REVISED -
PLOT SCALE = 80.0000 ' / in.	DRAWN - MJO	REVISED -
PLOT DATE = 4/4/2022	CHECKED -	REVISED -
	DATE - 4/4/2022	FILE - 211456-SHT-GenNotes_01.dgn

STATE OF ILLINOIS
DEPARTMENT OF TRANSPORTATION

GENERAL NOTES

SCALE: NTS SHEET 1 OF 1 SHEETS STA. TO STA.

F.A.U. RTE.	SECTION	COUNTY	TOTAL SHEETS	SHEET NO.
1677	20-00025-00-RS	LAKE	25	3
CONTRACT NO. 61H79				
ILLINOIS FED. AID PROJECT 20-00025-00-RS				

SUMMARY OF QUANTITIES

CODE NO	ITEM	UNIT	TOTAL QUANTITY	CONSTRUCTION CODE	
				80% FED	20% VILL
				ROADWAY	
				0005	
				URBAN	
20101100	TREE TRUNK PROTECTION	EACH	8	8	
20101200	TREE ROOT PRUNING	EACH	8	8	
20101400	NITROGEN FERTILIZER NUTRIENT	POUND	23	23	
20101600	POTASSIUM FERTILIZER NUTRIENT	POUND	23	23	
20101700	SUPPLEMENTAL WATERING	UNIT	1	1	
20200100	EARTH EXCAVATION	CY YD	5	5	
20201200	REMOVAL AND DISPOSAL OF UNSUITABLE MATERIAL	CY YD	225	225	
20800150	TRENCH BACKFILL	CU YD	140	140	
21001000	GEOTECHNICAL FABRIC FOR GROUND STABILIZATION	SQ YD	6,746	6,746	
21101615	TOPSOIL FURNISH AND PLACE, 4"	SQ YD	419	419	
25000110	SEEDING, CLASS 1A	ACRE	0.25	0.25	
25100630	EROSION CONTROL BLANKET	SQ YD	419	419	
28000250	TEMPORARY EROSION CONTROL SEEDING	POUND	25	25	
28000510	INLET FILTERS	EACH	45	45	
28001100	TEMPORARY EROSION CONTROL BLANKET	SQ YD	419	419	

* INDICATES SPECIALTY ITEM

STATE OF ILLINOIS - PROFESSIONAL DESIGN FIRM
 LICENSE NO. - 184-001121 - EXPIRES 4/30/2020
 moring 4/4/2022 2:19:27 PM
 MODEL - INCAUR
 FILE NAME - P:\PROJECTS\211456-BAVCDM_Bldg STP Res\CAD\Sheets\211456-SHT-500_01.dgn
 I:\pilot\pdf\Bw_Default.plt
 I:\CAD\plots\211456_Pen.tbl
 P:\IN\CV\211456-BAVCDM_Bldg STP Res\CAD\Sheets\211456-SHT-500_01.dgn

	USER NAME = moring	DESIGNED - MH	REVISED -	STATE OF ILLINOIS DEPARTMENT OF TRANSPORTATION	SUMMARY OF QUANTITIES				F.A.U. RTE.	SECTION	COUNTY	TOTAL SHEETS	SHEET NO.
	PLOT SCALE = 80.0000' / in.	DRAWN - MJO	REVISED -						1677	20-00025-00-R5	LAKE	25	4
	PLOT DATE = 4/4/2022	CHECKED -	REVISED -		SCALE: NTS SHEET 1 OF 6 SHEETS STA. TO STA.					CONTRACT NO. 61H79			
	DATE = 4/4/2022	FILE - 211456-SHT-500_01.dgn	ILLINOIS FED. AID PROJECT 20-00025-00-R5										

SUMMARY OF QUANTITIES

CODE NO	ITEM	UNIT	TOTAL QUANTITY	CONSTRUCTION CODE
				80% FED 20% VILL
				ROADWAY 0005 URBAN
30300001	AGGREGATE SUBGRADE IMPROVEMENT	CU YD	225	225
31101400	SUBBASE GRANULAR MATERIAL TYPE B 6"	SQ YD	409	409
35101600	AGGREGATE BASE COURSE, TYPE B 4"	SQ YD	501	501
40201000	AGGREGATE FOR TEMPORARY ACCESS	TON	3	3
40600290	BITUMINOUS MATERIALS (TACK COAT)	PCUND	18,257	18,257
40600370	LONGITUDINAL JOINT SEALANT	FOOT	11,346	11,346
40600400	MIXTURE FOR CRACKS, JOINTS, AND FLANGEWAYS	TON	5	5
40600982	HOT-MIX ASPHALT SURFACE REMOVAL - BUTT JOINT	SQ YD	137	137
40603200	POLYMERIZED HOT-MIX ASPHALT BINDER COURSE, IL-4.75, N50	TON	1,134	1,134
40604060	HOT-MIX ASPHALT SURFACE COURSE, IL-9 5, MIX "D", N50	TON	2,267	2,267
42001300	PROTECTIVE COAT	SQ YD	766	766
42300400	PORTLAND CEMENT CONCRETE DRIVEWAY PAVEMENT, 8 INCH	SQ YD	409	409
42400200	PORTLAND CEMENT CONCRETE SIDEWALK 5 INCH	SQ FT	229	229
42400800	DETECTABLE WARNINGS	SQ FT	20	20
44000157	HOT-MIX ASPHALT SURFACE REMOVAL, 2"	SQ YD	27,047	27,047

* INDICATES SPECIALTY ITEM

STATE OF ILLINOIS - PROFESSIONAL DESIGN FIRM
 LICENSE NO. - 184-001121 - EXPIRES 4/30/2020
 MORNING, INDELA
 4/4/2022 2:19:28 PM
 FILE NAME: P:\INC\211456-Barcode - Road STP - IACAD\211456-SHT-SOQ_01.dgn
 P:\INC\211456-Barcode - Road STP - IACAD\211456-SHT-SOQ_01.dgn



USER NAME = morning	DESIGNED - MH	REVISED -
PLOT SCALE = 80.0000' / in.	DRAWN - MJO	REVISED -
PLOT DATE = 4/4/2022	CHECKED -	REVISED -
	DATE - 4/4/2022	FILE - 211456-SHT-SOQ_01.dgn

STATE OF ILLINOIS
DEPARTMENT OF TRANSPORTATION

SUMMARY OF QUANTITIES

SCALE: NTS | SHEET 2 OF 6 SHEETS | STA. TO STA.

F.A.U. RTE.	SECTION	COUNTY	TOTAL SHEETS	SHEET NO.
1677	20-00025-00-RS	LAKE	25	5
CONTRACT NO. 61H79			ILLINOIS FED. AID PROJECT 20-00025-00-RS	

SUMMARY OF QUANTITIES

CODE NO	ITEM	UNIT	TOTAL QUANTITY	CONSTRUCTION CODE
				80% FED 20% VILL.
				ROADWAY
				0005
				URBAN
4400200	DRIVEWAY PAVEMENT REMOVAL	SQ YD	486	486
4400500	COMBINATION CURB AND GUTTER REMOVAL	FOOT	2,135	2,135
4400600	SIDEWALK REMOVAL	SQ FT	432	432
44201713	CLASS D PATCHES, TYPE I, 6 INCH	SQ YD	1,350	1,350
44201717	CLASS D PATCHES, TYPE II, 6 INCH	SQ YD	1,350	1,350
44201721	CLASS D PATCHES, TYPE III, 6 INCH	SQ YD	1,350	1,350
44201723	CLASS D PATCHES, TYPE IV, 6 INCH	SQ YD	1,350	1,350
44201785	CLASS D PATCHES, TYPE I, 12 INCH	SQ YD	338	338
44201789	CLASS D PATCHES, TYPE II, 12 INCH	SQ YD	338	338
44201794	CLASS D PATCHES, TYPE III, 12 INCH	SQ YD	338	338
44201796	CLASS D PATCHES, TYPE IV, 12 INCH	SQ YD	338	338
55100400	STORM SEWER REMOVAL 10"	FOOT	50	50
55100500	STORM SEWER REMOVAL 12"	FOOT	160	160
55100700	STORM SEWER REMOVAL 15"	FOOT	70	70
55100900	STORM SEWER REMOVAL 18"	FOOT	115	115

* INDICATES SPECIALTY ITEM

STATE OF ILLINOIS - PROFESSIONAL DESIGN FIRM
 LICENSE NO. - 184-001121 - EXPIRES 4/30/2020
 DATE 4/4/2022 2:19:29 PM
 PROJECT: P:\IN\CV\211456-5HT-SOQ_01.dgn
 FILE: 211456-5HT-SOQ_01.dgn



USER NAME = mornig	DESIGNED - MH	REVISED -
DRAWN - MJO	CHECKED -	REVISED -
PLOT SCALE = 80.0000' / in.	DATE - 4/4/2022	FILE - 211456-5HT-SOQ_01.dgn

STATE OF ILLINOIS
DEPARTMENT OF TRANSPORTATION

SUMMARY OF QUANTITIES

SCALE: NTS SHEET 3 OF 6 SHEETS STA. TO STA.

F.A.U. RTE.	SECTION	COUNTY	TOTAL SHEETS	SHEET NO.
1677	20-0025-00-R5	LAKE	25	6
CONTRACT NO. 61H79			ILLINOIS FED. AID PROJECT 20-0025-00-R5	

SUMMARY OF QUANTITIES

CODE NO.	ITEM	UNIT	TOTAL QUANTITY	CONSTRUCTION CODE
				80% FED 20% VILL.
				ROADWAY
				0005
				URBAN
550B0040	STORM SEWERS, CLASS B, TYPE 1 10"	FOOT	50	50
550A0050	STORM SEWERS, CLASS A, TYPE 1 12"	FOOT	160	160
550A0070	STORM SEWERS, CLASS A, TYPE 1 15"	FOOT	70	70
550A0090	STORM SEWERS, CLASS A, TYPE 1 18"	FOOT	115	115
60252800	CATCH BASINS TO BE RECONSTRUCTED	EACH	2	2
60256700	MANHOLES TO BE ADJUSTED WITH NEW TYPE 11 FRAME AND GRATE	EACH	1	1
60261300	INLETS TO BE ADJUSTED WITH NEW TYPE 11 FRAME AND GRATE	EACH	5	5
60262700	INLETS TO BE RECONSTRUCTED	EACH	5	5
60265700	VALVE VAULTS TO BE ADJUSTED	EACH	1	1
60300305	FRAMES AND LIDS TO BE ADJUSTED	EACH	13	13
60603800	COMBINATION CONCRETE CURB AND GUTTER, TYPE B-6.12	FOOT	1,886	1,886
60605000	COMBINATION CONCRETE CURB AND GUTTER, TYPE B-6.24	FOOT	250	250
* 66900200	NON-SPECIAL WASTE DISPOSAL	CY YD	50	50
* 66900530	SOIL DISPOSAL ANALYSIS	EACH	1	1
* 66901001	REGULATED SUBSTANCES PRE-CONSTRUCTION PLAN	L SUM	1	1

* INDICATES SPECIALTY ITEM

STATE OF ILLINOIS - PROFESSIONAL DESIGN FIRM
 LICENSE NO. 184-001121 - EXPIRES 4/30/2020
 morning 4/4/2022 2:19:51 PM
 FILE NAME: P:\JANCO211456-dw\shw\shw\res\CAD\Drawings\211456-SHT-500-01.dgn



USER NAME = morning	DESIGNED - MH	REVISED -
	DRAWN - MJO	REVISED -
PLOT SCALE = 50.0000' / in	CHECKED -	REVISED -
PLOT DATE = 4/4/2022	DATE - 4/4/2022	FILE - 211456-SHT-500_01.dgn

STATE OF ILLINOIS
 DEPARTMENT OF TRANSPORTATION

SCALE: NTS		SHEET 4 OF 6 SHEETS		STA.	TO STA.
------------	--	---------------------	--	------	---------

F.A.U. RTE.	SECTION	COUNTY	TOTAL SHEETS	SHEET NO.
1677	20-00025-00-R5	LAKE	25	7
CONTRACT NO. 61H79			ILLINOIS FED. AID PROJECT 20-00025-00-R5	

SUMMARY OF QUANTITIES

CODE NO	ITEM	UNIT	TOTAL QUANTITY	CONSTRUCTION CODE
				80% FED 20% VILL
				ROADWAY
				0005
				URBAN
* 66901003	REGULATED SUBSTANCES FINAL CONSTRUCTION REPORT	L SUM	1	1
* 66901006	REGULATED SUBSTANCES MONITORING	CAL DA	5	5
67100100	MOBILIZATION	L SUM	1	1
70102620	TRAFFIC CONTROL AND PROTECTION, STANDARD 701501	L SUM	1	1
70102635	TRAFFIC CONTROL AND PROTECTION, STANDARD 701701	L SUM	1	1
70300100	SHORT TERM PAVEMENT MARKING	FOOT	1,135	1,135
70300150	SHORT TERM PAVEMENT MARKING REMOVAL	SQ FT	379	379
70300221	TEMPORARY PAVEMENT MARKING - LINE 4" - PAINT	FOOT	1,135	1,135
70300281	TEMPORARY PAVEMENT MARKING - LINE 24" - PAINT	FOOT	67	67
* 72000100	SIGN PANEL - TYPE 1	SQ FT	95	95
* 72400100	REMOVE SIGN PANEL ASSEMBLY - TYPE A	EACH	11	11
* 72400200	REMOVE SIGN PANEL ASSEMBLY - TYPE B	EACH	2	2
* 72900100	METAL POST - TYPE A	FOOT	208	208
* 78000100	THERMOPLASTIC PAVEMENT MARKING - LETTERS AND SYMBOLS	SQ FT	110	110
* 78000200	THERMOPLASTIC PAVEMENT MARKING - LINE 4"	FOOT	11,072	11,072

* INDICATES SPECIALTY ITEM

STATE OF ILLINOIS - PROFESSIONAL DESIGN FIRM
 LICENSE NO. - 184-001221 - EXPIRES 4/30/2020
 morning 4/4/2022 2:19:52 PM
 I:\Projects\211456-Barday Blvd STP Res\CAD\Sheets\211456-SHT-SOQ_01.dgn
 PLOT SCALE = 80.0000" / in.
 PLOT DATE = 4/4/2022



USER NAME = morning	DESIGNED - MH	REVISED -
DRAWN - MJO	CHECKED -	REVISED -
FILE - 211456-SHT-SOQ_01.dgn	DATE - 4/4/2022	

STATE OF ILLINOIS
 DEPARTMENT OF TRANSPORTATION

SUMMARY OF QUANTITIES

SCALE: NTS SHEET 5 OF 6 SHEETS STA. TO STA.

F.A.U. RTE.	SECTION	COUNTY	TOTAL SHEETS	SHEET NO.
1677	20-00025-00-RS	LAKE	25	8
CONTRACT NO. 61H79				
ILLINOIS FED. AID PROJECT 20-00025-00-RS				

SUMMARY OF QUANTITIES

CODE NO.	ITEM	UNIT	TOTAL QUANTITY	CONSTRUCTION CODE
				80% FED 20% VILL. ROADWAY 0005 URBAN
* 78000400	THERMOPLASTIC PAVEMENT MARKING - LINE 6"	FOOT	439	439
* 78000600	THERMOPLASTIC PAVEMENT MARKING - LINE 12"	FOOT	316	316
* 78000650	THERMOPLASTIC PAVEMENT MARKING - LINE 24"	FOOT	67	67
78300202	PAVEMENT MARKING REMOVAL - WATER BLASTING	SQ FT	513	513
X4022000	TEMPORARY ACCESS (COMMERCIAL ENTRANCE)	EACH	6	6
X6030310	FRAMES AND LIDS TO BE ADJUSTED (SPECIAL)	EACH	3	3
Z0019600	DUST CONTROL WATERING	UNIT	2	2
Z0030850	TEMPORARY INFORMATION SIGNING	SQ FT	103	103
Z0004522	HOT-MIX ASPHALT DRIVEWAY PAVEMENT, 6"	SQ YD	77	77
T Z0076600	TRAINEES	HOUR	500	500
T Z0076604	TRAINEES TRAINING PROGRAM GRADUATE	HOUR	500	500

* INDICATES SPECIALTY ITEM
T INDICATES CONSTRUCTION CODE 0042 TRAINEES

STATE OF ILLINOIS - PROFESSIONAL DESIGN FIRM
 LICENSE NO. - 184-001121 - EXPIRES 4/30/2020
 mhigginson 4/12/2022 11:53:46 AM
 P:\LINC\211456-Bardib\Bldg 5TP Res\CAD\Sheets\211456-SHT-SOQ_01.dgn
 P:\LINC\211456-Bardib\Bldg 5TP Res\CAD\Sheets\211456-SHT-SOQ_01.dgn



USER NAME = mhigginson	DESIGNED - MH	REVISED -
PLOT SCALE = 80.0000' / in.	DRAWN - MJO	REVISED -
PLOT DATE = 4/12/2022	CHECKED -	REVISED -
	DATE - 4/12/2022	FILE - 211456-SHT-SOQ_01.dgn

STATE OF ILLINOIS
DEPARTMENT OF TRANSPORTATION

SUMMARY OF QUANTITIES

SCALE: NTS SHEET 6 OF 6 SHEETS STA. TO STA.

F.A.U. RTE.	SECTION	COUNTY	TOTAL SHEETS	SHEET NO.
1677	20-00025-00-R5	LAKE	25	9
CONTRACT NO. 61H79			ILLINOIS FED. AID PROJECT 20-00025-00-R5	

SIGN SCHEDULE

STATION	SIZE 1 (IN)	SIZE 2 (IN)	SIGN TYPE	SIGN PANEL - TYPE 1 (SF)	REMOVE SIGN PANEL ASSEMBLY - TYPE A (EACH)	REMOVE SIGN PANEL ASSEMBLY - TYPE B (EACH)	METAL POST - TYPE A (FOOT)
15+18	24	30	R2-1	5		1	16
	12	18	NO PARKING	1.5			
26+50	30	30	W11-2	6.25			16
	24	12	W19-9P	2			
28+75	30	30	W11-2	6.25	1		16
	24	12	W16-7P	2			
29+00	30	30	W11-2	6.25	1		16
	24	12	W16-7P	2			
31+50	30	30	W11-2	6.25			16
	24	12	W19-9P	2			
36+00	24	30	R2-1	5	1		16
35+25	24	30	R2-1	5	1		16
39+50	24	30	R2-1	5	1		16
54+10	24	30	R2-1	5	1		16
52+50	30	30	R1-1	6.25	1		
	18	6	R1-3P	0.75			
54+00	30	30	R1-1	6.25	1		
	18	6	R1-3P	0.75			
54+50	24	30	R2-1	5	1		16
59+25	24	30	R2-1	5	1		16
63+50	24	30	R2-1	5	1		16
70+00	24	30	R2-1	5		1	16
	12	18	NO PARKING	1.5			
TOTAL				95	11	2	208

STATE OF ILLINOIS - PROFESSIONAL DESIGN FIRM
 LICENSE NO. - 184-001121 - EXPIRES 4/30/2020
 morning 4/4/2022 2:19:36 PM
 FILE: \\miller-pul-lincv211456-barclay Blvd STP Res\CAD\Sheets\211456-SHT-Schedule_01.dgn
 FILE: \\miller-pul-lincv211456-barclay Blvd STP Res\CAD\Sheets\211456-SHT-Schedule_01.dgn



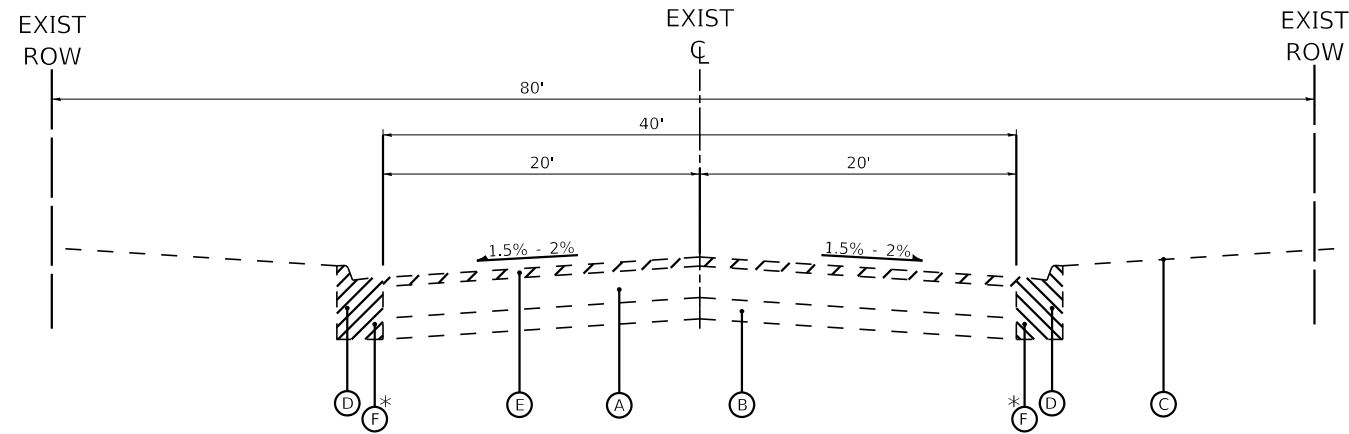
USER NAME = mornij	DESIGNED - MH	REVISED -
	DRAWN - MJO	REVISED -
PLOT SCALE = 80.0000 ' / in.	CHECKED -	REVISED -
PLOT DATE = 4/4/2022	DATE - 4/4/2022	FILE - 211456-SHT-Schedule_01.dgn

STATE OF ILLINOIS
 DEPARTMENT OF TRANSPORTATION

SCHEDULE OF QUANTITIES

SCALE: NTS SHEET 1 OF 1 SHEETS STA. TO STA.

F.A.U. RTE.	SECTION	COUNTY	TOTAL SHEETS	SHEET NO.
1677	20-00025-00-RS	LAKE	25	10
CONTRACT NO. 61H79				
ILLINOIS FED. AID PROJECT 20-00025-00-RS				

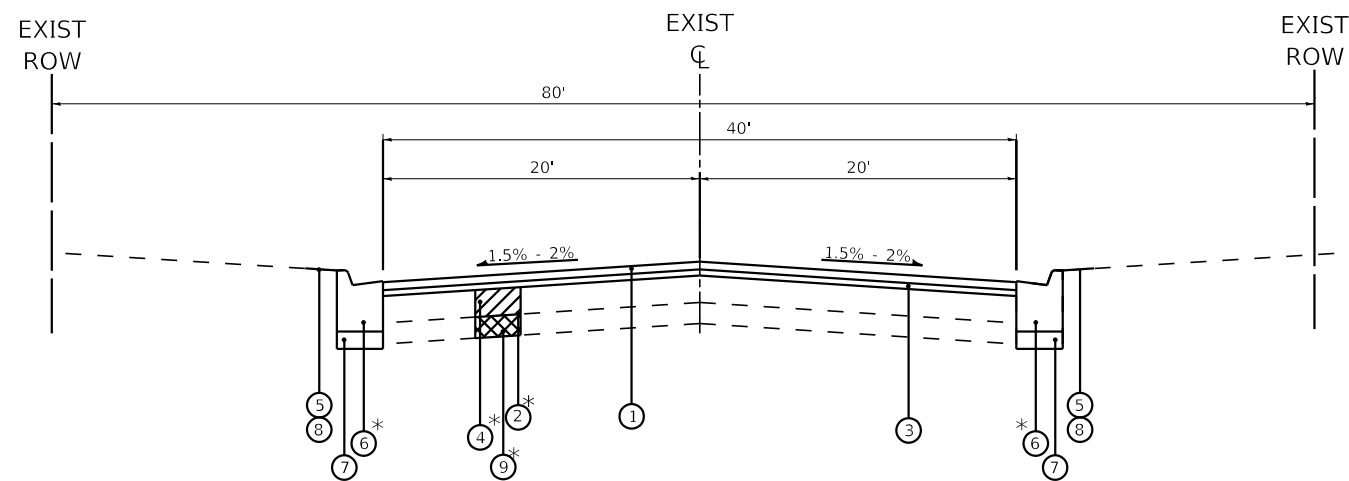


**EXISTING TYPICAL SECTION
BARCLAY BOULEVARD**
STA 14+16 TO STA 70+89

* AS DETERMINED BY ENGINEER

EXISTING LEGEND

- (A) EXISTING HMA BINDER & SURFACE COURSE, 5.00" - 13.75"
- (B) EXISTING AGGREGATE BASE COURSE, 5.75" - 17.00"
- (C) GROUND SURFACE
- (D) EXISTING COMBINATION CURB AND GUTTER
- (E) HOT-MIX ASPHALT SURFACE REMOVAL, 2"
- (F) COMBINATION CURB AND GUTTER REMOVAL
- REMOVAL ITEM



**PROPOSED TYPICAL SECTION
BARCLAY BOULEVARD**
STA 14+16 TO STA 70+89

* AS DETERMINED BY ENGINEER

PROPOSED LEGEND

- (1) HOT-MIX ASPHALT SURFACE COURSE, IL-9.5, MIX "D", N50 - 1 1/2"
- (2) GEOTECHNICAL FABRIC FOR GROUND STABILIZATION
- (3) POLYMERIZED HOT-MIX ASPHALT BINDER COURSE, IL-4.75, N50 - 3/4"
- (4) CLASS D PATCHES
- (5) SEEDING, CLASS 1A
- (6) COMBINATION CONCRETE CURB AND GUTTER, TYPE B-6.12
- (7) AGGREGATE BASE COURSE, TYPE B, 4"
- (8) TOPSOIL FURNISH AND PLACE, 4"
- (9) REMOVAL AND DISPOSAL OF UNSUITABLE MATERIALS
AGGREGATE SUBGRADE IMPROVEMENT

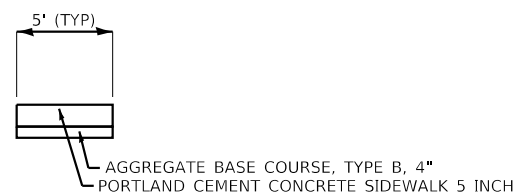
HOT-MIX ASPHALT MIXTURE REQUIREMENTS

CONTRACTOR SHALL MILL BEFORE PATCHING

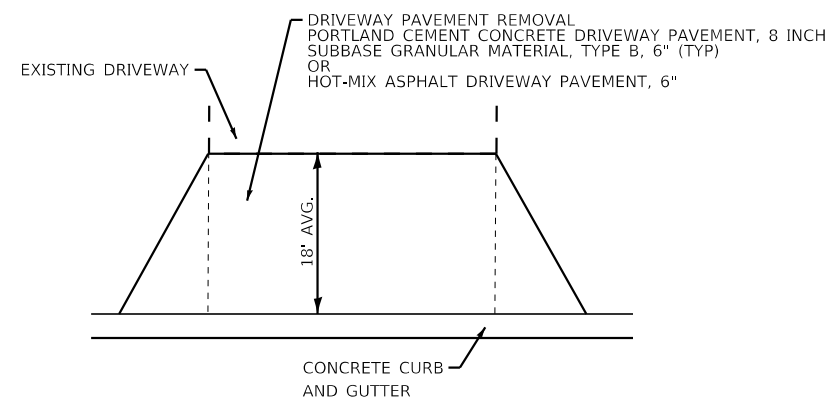
MIXTURE TYPE	AIR VOIDS @ Ndes	QMP
PAVEMENT RESURFACING		
HOT-MIX ASPHALT SURFACE COURSE, IL-9.5, MIX "D", N50 1 1/2"	4% @ 50 Gyr.	LR 1030-2
POLYMERIZED HOT-MIX ASPHALT BINDER COURSE, IL-4.75, N50: 3/4"	3.5% @ 50 Gyr.	LR 1030-2
HMA DRIVEWAY PAVEMENT 6"		
HOT-MIX ASPHALT SURFACE COURSE, IL-9.5, MIX "D", N50 2"	4% @ 50 Gyr.	LR 1030-2
HOT-MIX ASPHALT BINDER COURSE, IL-19.0, N50 4"	4% @ 50 Gyr.	LR 1030-2
PATCHING		
CLASS D PATCHES (HMA BINDER IL-19.0mm)	4% @ 70 Gyr.	LR 1030-2
QMP DESIGNATION: QUALITY CONTROL/QUALITY ASSURANCE (QC/QA); PER LR 1030-2		

NOTES:

1. THE UNIT WEIGHT USED TO CALCULATE ALL HMA SURFACE MIXTURE QUANTITIES IS 112 LBS/SQ YD/IN.
2. THE "AC TYPE" FOR POLYMERIZED HMA MIXES SHALL BE "SBS/SBR PG 76 -22" AND FOR NON-POLYMERIZED HMA THE "AC TYPE" SHALL BE "PG 64 -22" UNLESS MODIFIED BY RECLAIMED MATERIALS SPECIFICATIONS.
3. THE LONGITUDINAL JOINT SEALANT SHALL BE PLACED OVER THE POLYMERIZED HMA BC IL-4.75 N50



SIDEWALK DETAIL



DRIVEWAY DETAIL

STATE OF ILLINOIS - PROFESSIONAL DESIGN FIRM
 LICENSE NO. - 184-001121 - EXPIRES 4/30/2020
 morning 4/4/2022 2:19:39 PM
 FILE NAME: P:\11456-SHT-TypSec_01.dgn
 FILE PATH: P:\11456-SHT-TypSec_01.dgn
 ...:\Pict\dry\pdf\BW_Default.plt
 ...:\CAD\Plots\211456_Pen.tbl
 P:\11456-SHT-TypSec_01.dgn



USER NAME = mornig	DESIGNED - MH	REVISED -
	DRAWN - MJO	REVISED -
PLOT SCALE = 40,0000 ' / in.	CHECKED -	REVISED -
PLOT DATE = 4/4/2022	DATE - 4/4/2022	FILE - 211456-SHT-TypSec_01.dgn

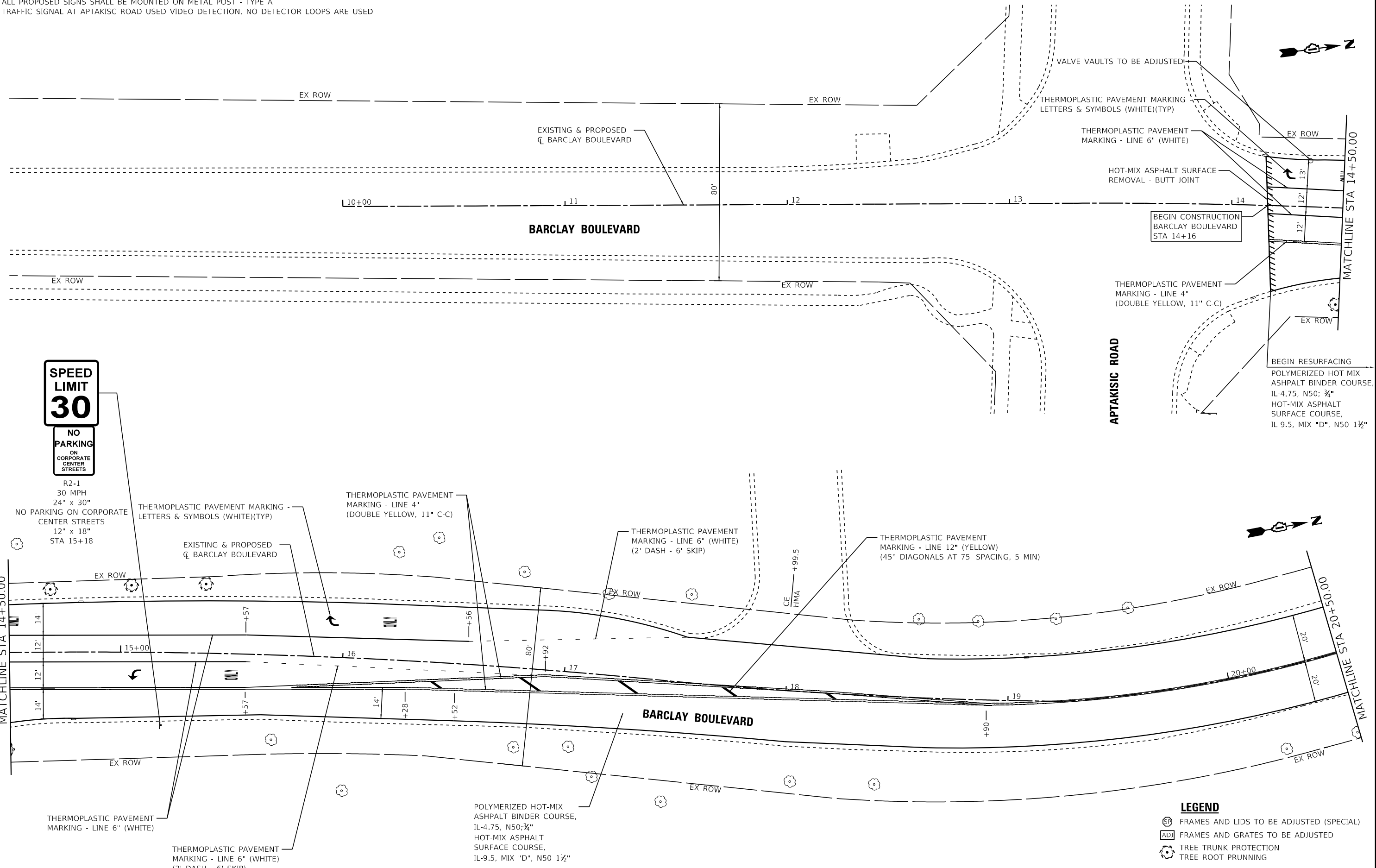
STATE OF ILLINOIS
DEPARTMENT OF TRANSPORTATION

**TYPICAL SECTIONS
BARCLAY BOULEVARD**

SCALE: NTS SHEET 1 OF 1 SHEETS STA. TO STA.

F.A.U. RTE.	SECTION	COUNTY	TOTAL SHEETS	SHEET NO.
1677	20-00025-00-RS	LAKE	25	11
CONTRACT NO. 61H79				
ILLINOIS FED. AID PROJECT 20-00025-00-RS				

NOTES:
 1) ALL PROPOSED SIGNS SHALL BE MOUNTED ON METAL POST - TYPE A
 2) TRAFFIC SIGNAL AT APTAKISC ROAD USED VIDEO DETECTION, NO DETECTOR LOOPS ARE USED



R2-1
 30 MPH
 24" x 30"
 NO PARKING ON CORPORATE
 CENTER STREETS
 12" x 18"
 STA 15+18

- LEGEND**
- FRAMES AND LIDS TO BE ADJUSTED (SPECIAL)
 - FRAMES AND GRATES TO BE ADJUSTED
 - TREE TRUNK PROTECTION
 - TREE ROOT PRUNING

POLYMERIZED HOT-MIX
 ASPHALT BINDER COURSE,
 IL-4.75, N50; 3/4"
 HOT-MIX ASPHALT
 SURFACE COURSE,
 IL-9.5, MIX "D", N50 1 1/2"

STATE OF ILLINOIS - PROFESSIONAL DESIGN FIRM
 LICENSE NO. - 184-001121 - EXPIRES 4/30/2020
 morning 4/4/2022 2:19:34 PM
 FILE NAME: P:\INC\211456-Barclay Blvd STP Res\CAD\Sheets\211456-SHT-Plan_01.dgn
 FILE NAME: P:\INC\211456-Barclay Blvd STP Res\CAD\Sheets\211456-SHT-Plan_01.dgn



USER NAME = mornig	DESIGNED - MH	REVISED -
	DRAWN - MJO	REVISED -
PLOT SCALE = 40,0000 ' / in.	CHECKED -	REVISED -
PLOT DATE = 4/4/2022	DATE - 4/4/2022	FILE - 211456-SHT-Plan_01.dgn

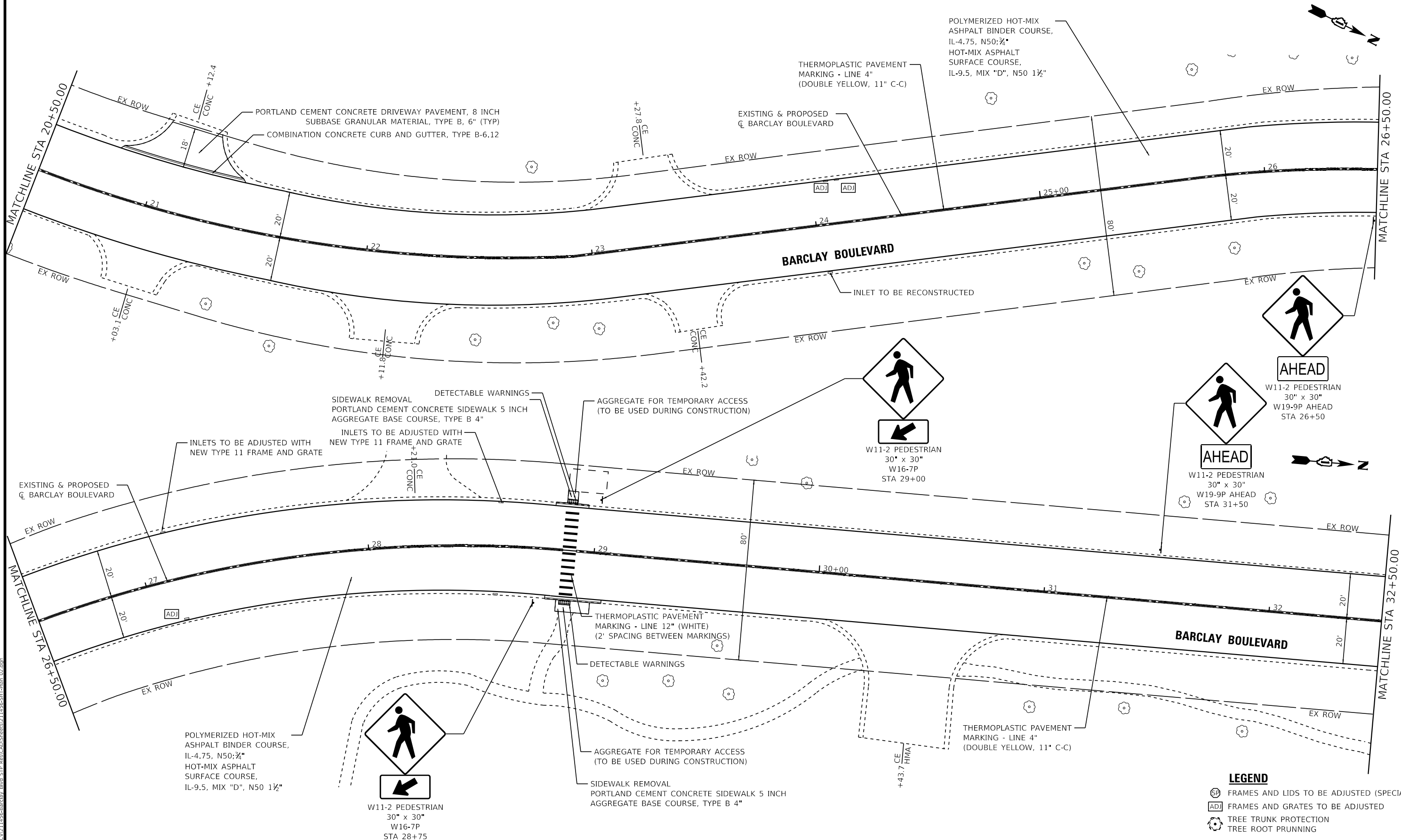
STATE OF ILLINOIS
 DEPARTMENT OF TRANSPORTATION

**ROADWAY PLAN
 BARCLAY BOULEVARD**

SCALE: 1" = 20' SHEET 1 OF 6 SHEETS STA. 10+00 TO STA. 20+50

F.A.U. RTE.	SECTION	COUNTY	TOTAL SHEETS	SHEET NO.
1677	20-00025-00-RS	LAKE	25	12
CONTRACT NO. 61H79				
ILLINOIS FED. AID PROJECT 20-00025-00-RS				

NOTES:
ALL PROPOSED SIGNS SHALL BE MOUNTED ON METAL POST - TYPE A



STATE OF ILLINOIS - PROFESSIONAL DESIGN FIRM
 LICENSE NO. - 184-001121 - EXPIRES 4/30/2020
 morning 4/4/2022 2:19:36 PM
 FILE NAME: P:\IL\2022\11456-Barclay Blvd STP Res\CAD\Sheets\11456-SHT-Plan_02.dgn
 FILE NAME: P:\IL\2022\11456-Barclay Blvd STP Res\CAD\Sheets\11456-SHT-Plan_02.dgn



USER NAME = morning	DESIGNED - MH	REVISED -
	DRAWN - MJO	REVISED -
PLOT SCALE = 40,0000' / in.	CHECKED -	REVISED -
PLOT DATE = 4/4/2022	DATE - 4/4/2022	FILE - 211456-SHT-Plan_02.dgn

STATE OF ILLINOIS
DEPARTMENT OF TRANSPORTATION

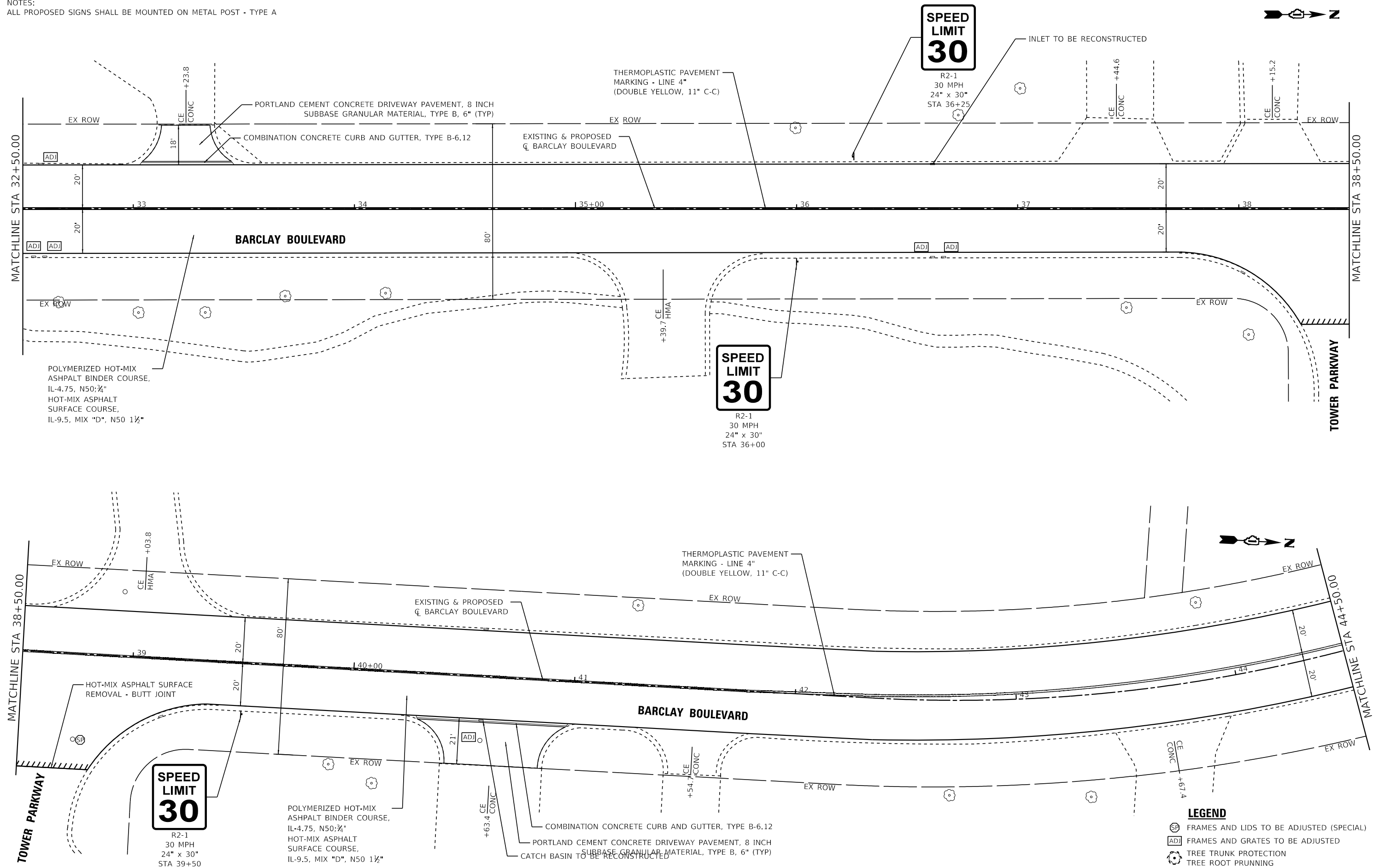
ROADWAY PLAN
BARCLAY BOULEVARD

SCALE: 1" = 20'
SHEET 2 OF 6 SHEETS
STA. 20+50 TO STA. 32+50

F.A.U. RTE.	SECTION	COUNTY	TOTAL SHEETS	SHEET NO.
1677	20-00025-00-RS	LAKE	25	13
CONTRACT NO. 61H79				
ILLINOIS FED. AID PROJECT 20-00025-00-RS				

- LEGEND**
- FRAMES AND LIDS TO BE ADJUSTED (SPECIAL)
 - FRAMES AND GRATES TO BE ADJUSTED
 - TREE TRUNK PROTECTION
 - TREE ROOT PRUNING

NOTES:
ALL PROPOSED SIGNS SHALL BE MOUNTED ON METAL POST - TYPE A



POLYMERIZED HOT-MIX ASPHALT BINDER COURSE, IL-4.75, N50:¾"
HOT-MIX ASPHALT SURFACE COURSE, IL-9.5, MIX "D", N50 1½"

SPEED LIMIT 30
R2-1
30 MPH
24" x 30"
STA 39+50

POLYMERIZED HOT-MIX ASPHALT BINDER COURSE, IL-4.75, N50:¾"
HOT-MIX ASPHALT SURFACE COURSE, IL-9.5, MIX "D", N50 1½"

- LEGEND**
- ⊙ SP FRAMES AND LIDS TO BE ADJUSTED (SPECIAL)
 - ⊞ ADJ FRAMES AND GRATES TO BE ADJUSTED
 - ⊙ TREE TRUNK PROTECTION
 - ⊙ TREE ROOT PRUNNING

STATE OF ILLINOIS - PROFESSIONAL DESIGN FIRM
LICENSE NO. - 184-001121 - EXPIRES 4/30/2020
morning 4/4/2022 2:19:38 PM
FILE NAME: P:\INC\211456-SHT-Plan_03.dgn
...:\P\cd\rv\p\df\BW_Default.plt
...:\CAD\PI\211456_Pen.tbl
P:\INC\211456-Barclay Blvd STP Res\CAD\Sheets\211456-SHT-Plan_03.dgn

BAXTER & WOODMAN
Consulting Engineers

USER NAME = mornjg	DESIGNED - MH	REVISED -
	DRAWN - MJO	REVISED -
PLOT SCALE = 40,0000 ' / in.	CHECKED -	REVISED -
PLOT DATE = 4/4/2022	DATE - 4/4/2022	FILE - 211456-SHT-Plan_03.dgn

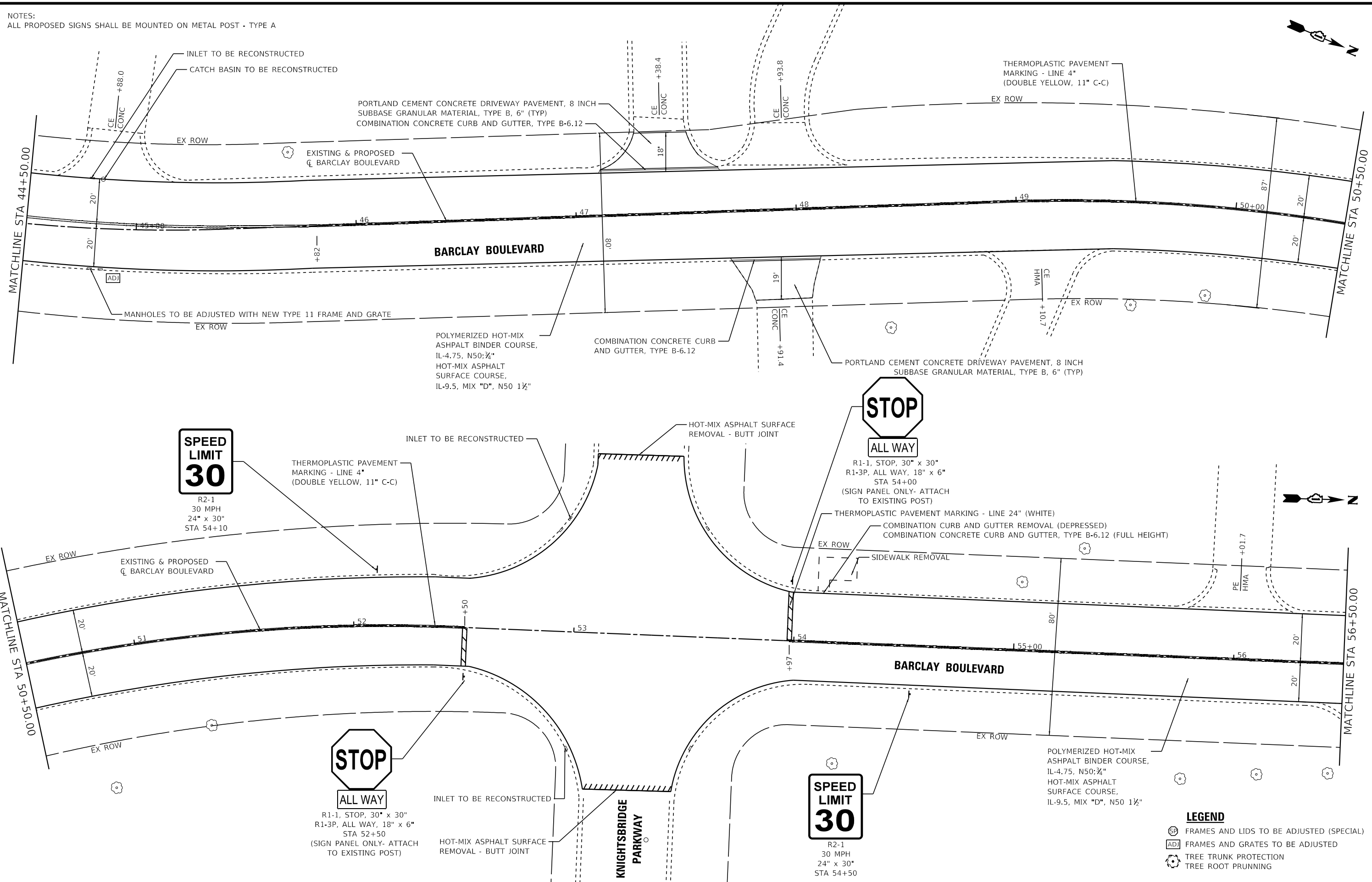
STATE OF ILLINOIS
DEPARTMENT OF TRANSPORTATION

ROADWAY PLAN
BARCLAY BOULEVARD

SCALE: 1" = 20' SHEET 3 OF 6 SHEETS STA. 32+50 TO STA. 44+50

F.A.U. RTE.	SECTION	COUNTY	TOTAL SHEETS	SHEET NO.
1677	20-00025-00-RS	LAKE	25	14
CONTRACT NO. 61H79				
ILLINOIS FED. AID PROJECT 20-00025-00-RS				

NOTES:
ALL PROPOSED SIGNS SHALL BE MOUNTED ON METAL POST - TYPE A



SPEED LIMIT 30
R2-1
30 MPH
24" x 30"
STA 54+10

STOP
ALL WAY
R1-1, STOP, 30" x 30"
R1-3P, ALL WAY, 18" x 6"
STA 54+00
(SIGN PANEL ONLY- ATTACH TO EXISTING POST)

STOP
ALL WAY
R1-1, STOP, 30" x 30"
R1-3P, ALL WAY, 18" x 6"
STA 52+50
(SIGN PANEL ONLY- ATTACH TO EXISTING POST)

SPEED LIMIT 30
R2-1
30 MPH
24" x 30"
STA 54+50

- LEGEND**
- FRAMES AND LIDS TO BE ADJUSTED (SPECIAL)
 - FRAMES AND GRATES TO BE ADJUSTED
 - TREE TRUNK PROTECTION
 - TREE ROOT PRUNING

STATE OF ILLINOIS - PROFESSIONAL DESIGN FIRM
 LICENSE NO. - 184-001121 - EXPIRES 4/30/2020
 morning 4/4/2022 2:20:00 PM
 FILE NAME: P:\211456-SHT-Plan_04.dgn
 FILE PATH: P:\211456-SHT-Plan_04.dgn
 ...P:\211456-SHT-Plan_04.dgn
 ...CAD\PIPs\211456_Plan.dgn
 P:\LINC\211456-Barclay Blvd STP Res\CAD\Sheets\211456-SHT-Plan_04.dgn

BAXTER & WOODMAN Consulting Engineers	USER NAME = mornjg	DESIGNED - MH	REVISED -
	PLOT SCALE = 40,0000' / in.	DRAWN - MJO	REVISED -
	PLOT DATE = 4/4/2022	CHECKED -	REVISED -
		DATE - 4/4/2022	FILE - 211456-SHT-Plan_04.dgn

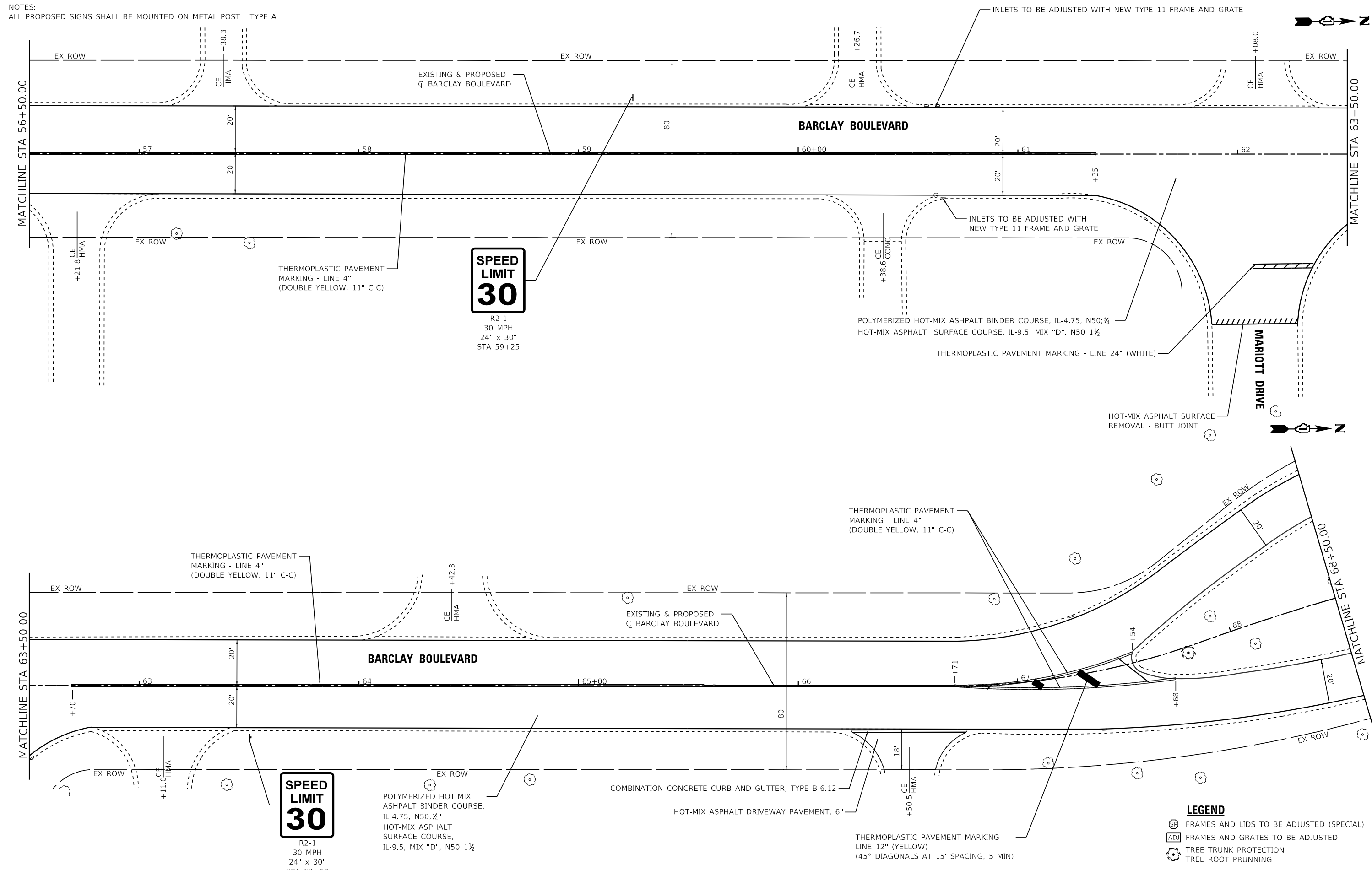
STATE OF ILLINOIS
DEPARTMENT OF TRANSPORTATION

ROADWAY PLAN
BARCLAY BOULEVARD

SCALE: 1" = 20'
SHEET 4 OF 6 SHEETS
STA. 44+50 TO STA. 56+50

F.A.U. RTE.	SECTION	COUNTY	TOTAL SHEETS	SHEET NO.
1677	20-00025-00-RS	LAKE	25	15
CONTRACT NO. 61H79				
ILLINOIS FED. AID PROJECT 20-00025-00-RS				

NOTES:
ALL PROPOSED SIGNS SHALL BE MOUNTED ON METAL POST - TYPE A



SPEED LIMIT 30
R2-1
30 MPH
24" x 30"
STA 59+25

SPEED LIMIT 30
R2-1
30 MPH
24" x 30"
STA 63+50

- LEGEND**
- ⊕ FRAMES AND LIDS TO BE ADJUSTED (SPECIAL)
 - ⊞ FRAMES AND GRATES TO BE ADJUSTED
 - ⊗ TREE TRUNK PROTECTION
 - ⊙ TREE ROOT PRUNNING

STATE OF ILLINOIS - PROFESSIONAL DESIGN FIRM
 LICENSE NO. - 184-001121 - EXPIRES 4/30/2020
 morning 4/4/2022 2:20:03 PM
 FILE NAME: P:\INC\211456-Barclay Blvd STP Res\CAD\Sheets\211456-SHT-Plan_05.dgn
 FILE NAME: P:\INC\211456-Barclay Blvd STP Res\CAD\Sheets\211456-SHT-Plan_05.dgn



USER NAME = mornjg	DESIGNED - MH	REVISED -
	DRAWN - MJO	REVISED -
PLOT SCALE = 40,0000' / in.	CHECKED -	REVISED -
PLOT DATE = 4/4/2022	DATE - 4/4/2022	FILE - 211456-SHT-Plan_05.dgn

STATE OF ILLINOIS
DEPARTMENT OF TRANSPORTATION

ROADWAY PLAN
BARCLAY BOULEVARD
SCALE: 1" = 20'
SHEET 5 OF 6 SHEETS
STA. 56+50 TO STA. 68+50

F.A.U. RTE.	SECTION	COUNTY	TOTAL SHEETS	SHEET NO.
1677	20-00025-00-RS	LAKE	25	16
CONTRACT NO. 61H79				
ILLINOIS FED. AID PROJECT 20-00025-00-RS				



SPEED LIMIT
30

NO PARKING
ON CORPORATE CENTER STREETS

R2-1
30 MPH
24" x 30"
NO PARKING ON CORPORATE CENTER STREETS
12" x 18"
STA 70+00

END RESURFACING
POLYMERIZED HOT-MIX ASPHALT BINDER COURSE, IL-4.75, N50; ¾"
HOT-MIX ASPHALT SURFACE COURSE, IL-9.5, MIX "D", N50 1½"

THERMOPLASTIC PAVEMENT MARKING - LINE 4" (DOUBLE YELLOW, 11" C-C)

END CONSTRUCTION BARCLAY BOULEVARD STA 70+89

INLETS TO BE ADJUSTED WITH NEW TYPE 11 FRAME AND GRATE

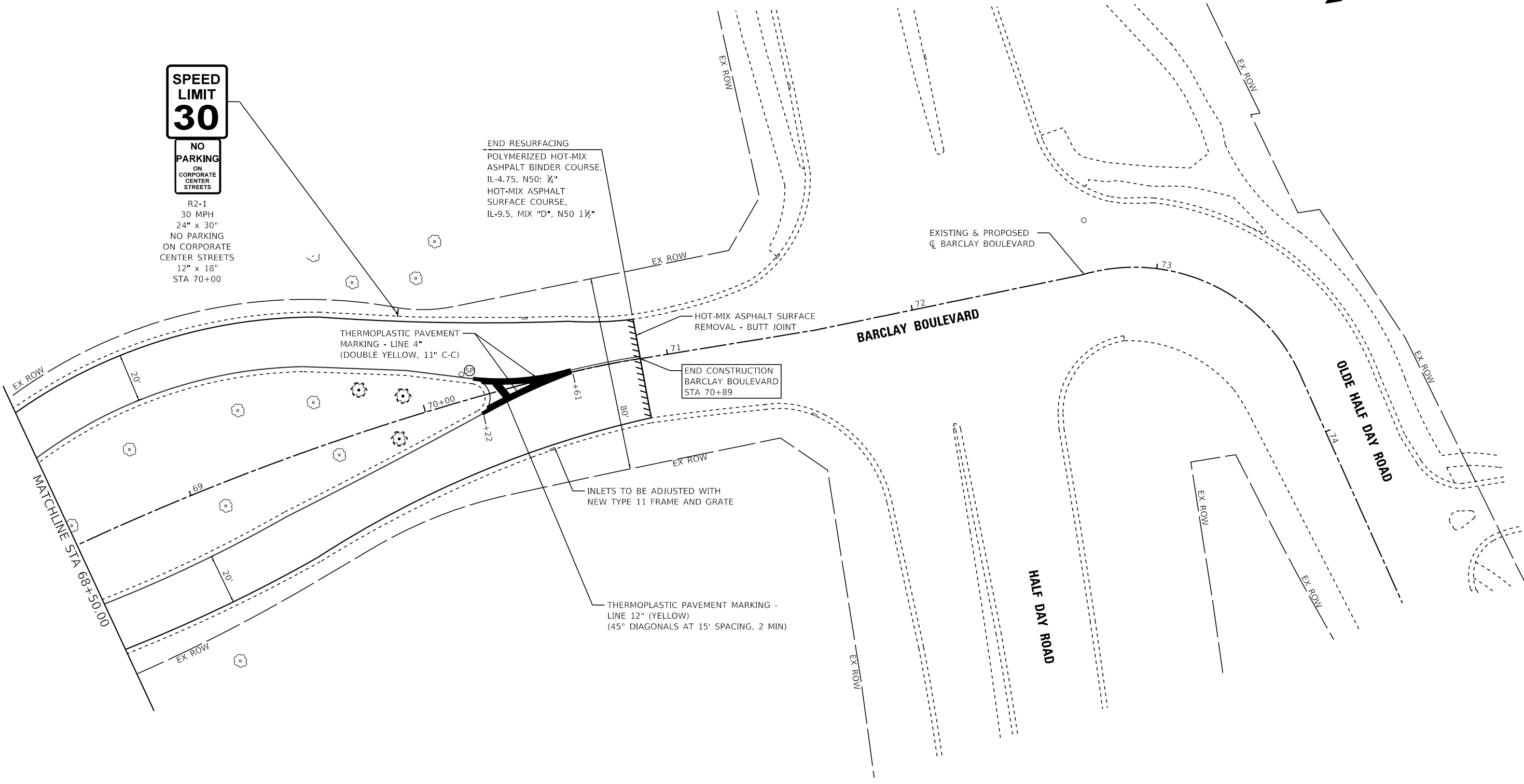
THERMOPLASTIC PAVEMENT MARKING - LINE 12" (YELLOW) (45° DIAGONALS AT 15' SPACING, 2 MIN)

EXISTING & PROPOSED CL BARCLAY BOULEVARD

BARCLAY BOULEVARD

OLDE HALF DAY ROAD

HALF DAY ROAD



NOTES:
ALL PROPOSED SIGNS SHALL BE MOUNTED ON METAL POST - TYPE A

- LEGEND**
- FRAMES AND LIDS TO BE ADJUSTED (SPECIAL)
 - FRAMES AND GRATES TO BE ADJUSTED
 - TREE TRUNK PROTECTION
 - TREE ROOT PRUNING

STATE OF ILLINOIS - PROFESSIONAL DESIGN FIRM
 LICENSE NO. - 184-001121 - EXPIRES 4/30/2020
 morning 4/4/2022 2:20:04 PM
 FILE: \\baxwoodman\p\l\211456-SHT-Plan_06.dgn
 FILE: \\baxwoodman\p\l\211456-SHT-Plan_06.dgn



USER NAME = morning	DESIGNED - MH	REVISED -
DRAWN - MJO	REVISIONS -	
PLOT SCALE = 40,0000 ' / in.	CHECKED -	REVISIONS -
PLOT DATE = 4/4/2022	DATE - 4/4/2022	FILE - 211456-SHT-Plan_06.dgn

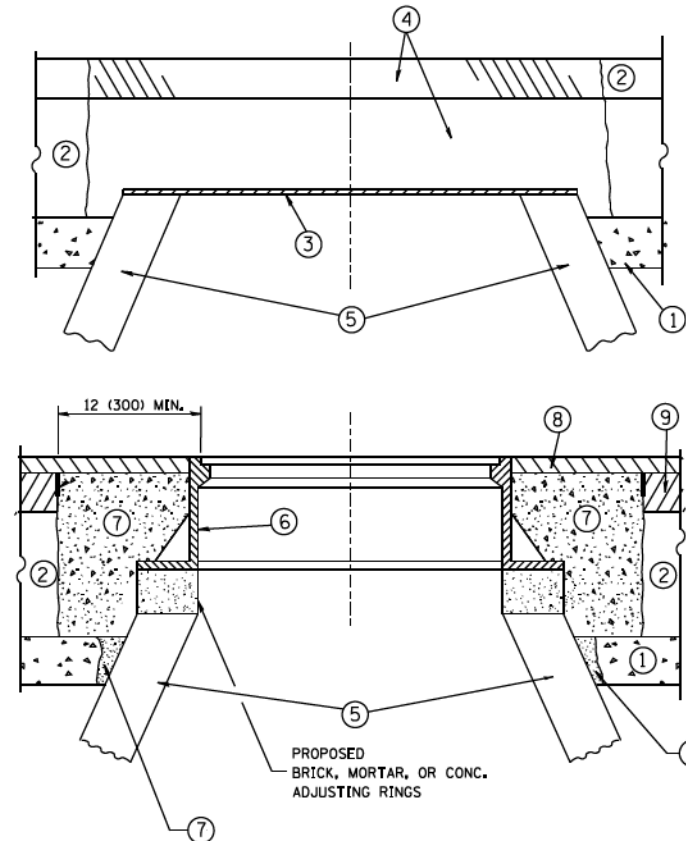
STATE OF ILLINOIS
DEPARTMENT OF TRANSPORTATION

ROADWAY PLAN
BARCLAY BOULEVARD

SCALE: 1" = 20' SHEET 6 OF 6 SHEETS STA. 68+50 TO STA.

F.A.U. RTE.	SECTION	COUNTY	TOTAL SHEETS	SHEET NO.
1677	20-00025-00-RS	LAKE	25	17
				CONTRACT NO. 61H79
ILLINOIS FED. AID PROJECT 20-00025-00-RS				

COPYRIGHT © 2017 BY BAXTER & WOODMAN, INC.
 STATE OF ILLINOIS - PROFESSIONAL DESIGN FIRM
 No. 18-0474202
 22069 PA
 F:\UNC\21456-Borclay_Bid_STP_Res\CAD\Sheets\21456-DISTRICT ONE DETAILS - BD.dgn



NOTES:

EXISTING BROKEN FRAMES AND LIDS SHALL BE REMOVED AND DISPOSED OF BY THE CONTRACTOR AND SHALL BE REPLACED AS DIRECTED BY THE ENGINEER. REPLACEMENT FRAMES AND LIDS WILL BE PAID FOR IN ACCORDANCE WITH ARTICLE 109.04 OF THE STANDARD SPECIFICATIONS UNLESS A SEPARATE PAY ITEM HAS BEEN PROVIDED.

IF THE EXISTING LIDS ARE OPEN, THE FRAME WILL BE ADJUSTED TO THE ELEVATION OF THE MILLED PAVEMENT SURFACE PRIOR TO THE MILLING OPERATION. THE FRAME WILL NOT BE REMOVED AND COVERED BY THE METAL PLATE.

CITY OF CHICAGO CASTINGS ARE THE PROPERTY OF THE CITY AND THE CONTRACTOR SHALL NOTIFY THE CITY FOR REMOVAL AND DISPOSITION OF THE CASTINGS.

THE METAL PLATE USED TO COVER THE STRUCTURE SHALL REMAIN THE PROPERTY OF THE CONTRACTOR.

WHEN STRUCTURES ARE TO BE ADJUSTED OR RECONSTRUCTED, THE LOWERING AND RAISING OF THE FRAMES AND LIDS WILL NOT BE PAID FOR SEPARATELY BUT WILL BE INCLUDED IN THE COST OF THE CORRESPONDING PAY ITEM.

**DETAILS FOR FRAMES AND LIDS ADJUSTMENT
WITH MILLING**

CONSTRUCTION PROCEDURES

STAGE 1 (BEFORE PAVEMENT MILLING)

- A) REMOVE A MINIMUM OF 12 (300) OF THE PAVEMENT FROM AROUND THE STRUCTURE.
- B) REMOVE THE EXISTING FRAME AND LID FROM THE STRUCTURE.
- C) COVER THE STRUCTURE OPENING WITH A 36 (900) DIAMETER METAL PLATE.
- D) BACKFILL WITH CRUSHED STONE AND A MINIMUM 1/2 (40) THICK HMA SURFACE MIX APPROVED BY THE ENGINEER.

STAGE 2 (AFTER PAVEMENT MILLING)

- A) REMOVE THE HMA SURFACE MIX AND CRUSHED STONE.
- B) INSTALL THE FRAME AND LID; ADJUST THE FRAME TO ITS FINAL SURFACE ELEVATION.
- C) THE SURROUNDING SPACE SHALL BE FILLED WITH CLASS PP-1* CONCRETE TO THE ELEVATION OF THE SURFACE OF THE EXISTING BASE COURSE OR THE BINDER COURSE.

* UNLESS OTHERWISE SPECIFIED IN THE PLANS.

THE PROCEDURE EXPLAINED ABOVE SHALL CONFORM TO THE APPLICABLE PORTIONS OF SECTIONS 353, 406, 602, AND 603 OF THE STANDARD SPECIFICATIONS EXCEPT THAT "THE CONTRACTOR SHALL ADJUST THE STRUCTURES TO THE FINISHED PAVEMENT ELEVATION NO MORE THAN 5 CALENDAR DAYS PRIOR TO PLACEMENT OF THE FINAL LIFT OF SURFACE UNLESS APPROVED BY THE ENGINEER."

LEGEND

- | | |
|--|-------------------------------|
| ① SUB-BASE GRANULAR MATERIAL | ⑥ FRAME AND LID (SEE NOTES) |
| ② EXISTING PAVEMENT | ⑦ CLASS PP-1* CONCRETE |
| ③ 36 (900) DIAMETER METAL PLATE | ⑧ PROPOSED HMA SURFACE COURSE |
| ④ PROPOSED CRUSHED STONE AND HMA SURFACE MIX | ⑨ PROPOSED HMA BINDER COURSE |
| ⑤ EXISTING STRUCTURE | |

LOCATION OF STRUCTURES:

THE CONTRACTOR WILL BE REQUIRED TO KEEP A RECORD OF THE LOCATIONS OF THE BURIED STRUCTURES ACCORDING TO THE STATION AND DISTANCE LEFT OR RIGHT OF THE CENTERLINE OF PAVEMENT. UPON COMPLETION OF THE WORK, THE CONTRACTOR WILL DELIVER THE RECORD TO THE ENGINEER.

BASIS OF PAYMENT:

REMOVING FRAMES AND LIDS ON DRAINAGE AND UTILITY STRUCTURES IN THE PAVEMENT PRIOR TO MILLING, AND ADJUSTING TO FINAL GRADE PRIOR TO PLACING THE SURFACE COURSE, WILL BE PAID FOR AT THE CONTRACT UNIT PRICE EACH FOR "FRAMES AND LIDS TO BE ADJUSTED (SPECIAL)."

THIS WORK WILL NOT BE PAID FOR WHEN DRAINAGE AND UTILITY STRUCTURES ARE SPECIFIED FOR PAYMENT AS STRUCTURE RECONSTRUCTION.

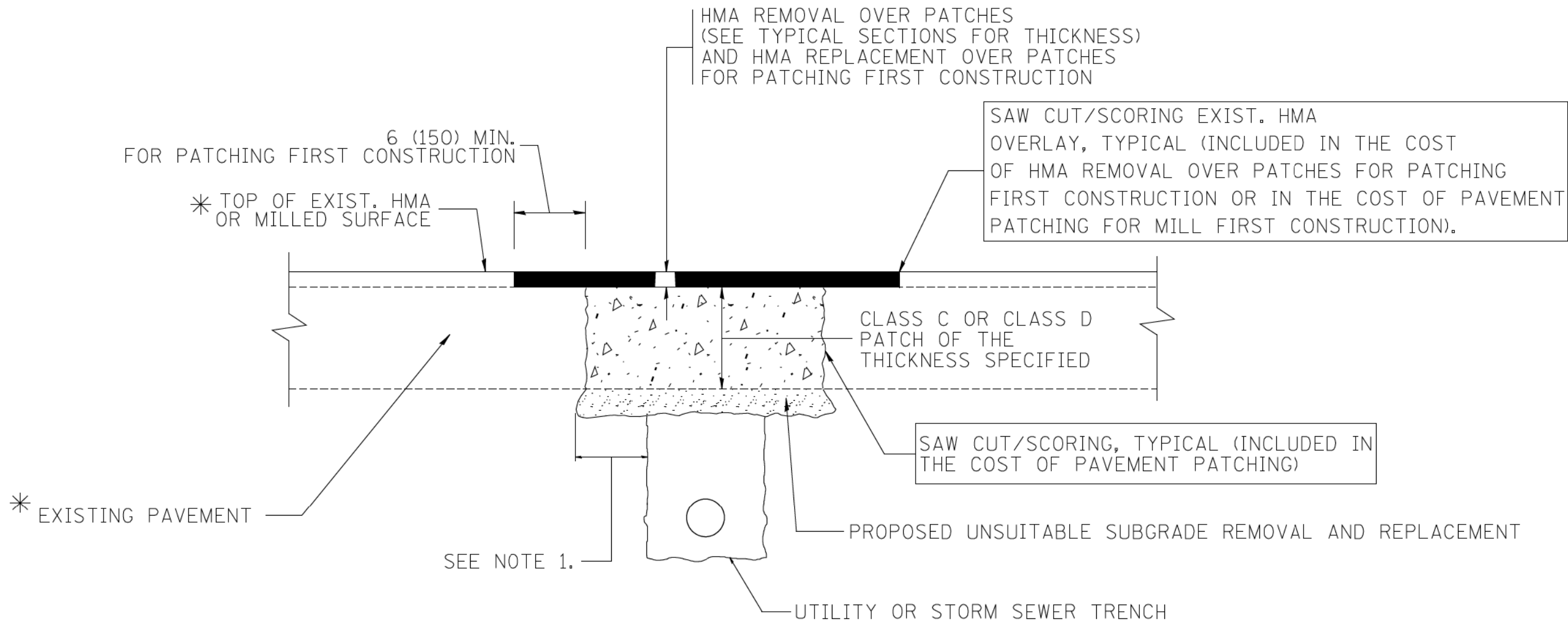
NEW FRAMES AND LIDS, WHEN SPECIFIED, WILL BE PAID FOR SEPARATELY.

ALL DIMENSIONS ARE IN INCHES (MILLIMETERS) UNLESS OTHERWISE SHOWN

FILE NAME =	USER NAME = bauerdl	DESIGNED - R. SHAH	REVISED - R. WIEDEMAN 05-14-04
ca:\p\work\p\dot\baue\dl\d0108315\bd08.dgn		DRAWN -	REVISED - R. BORO 01-01-07
		CHECKED -	REVISED - R. BORO 03-09-11
		DATE - 10-25-94	REVISED - R. BORO 12-06-11

**STATE OF ILLINOIS
DEPARTMENT OF TRANSPORTATION**

DETAILS FOR FRAMES AND LIDS ADJUSTMENT WITH MILLING		SECTION 20-00025-00-RS	COUNTY LAKE	TOTAL SHEETS 25	SHEET NO. 18
SCALE: NONE	SHEET NO. 1 OF 1 SHEETS	BD600-03 (BD-8)	CONTRACT NO. 61H79		
		STA. TO STA.	FED. ROAD DIST. NO. 1 ILLINOIS FED. AID PROJ. 20-00025-00-RS		



* SEE TYPICAL SECTIONS FOR THICKNESS AND MATERIALS

NOTES:

1. THE WIDTH OF THE FULL DEPTH PATCH OVER A TRENCH SHALL BE 12 (300) WIDER ON EACH SIDE OF THE TRENCH.
2. FOR METHOD OF MEASUREMENT AND BASIS OF PAYMENT, SEE RECURRING SPECIAL PROVISION "PATCHING WITH HOT-MIX ASPHALT OVERLAY REMOVAL".

SEQUENCE OF CONSTRUCTION (PATCHING FIRST)

1. REMOVE THE EXISTING HMA MATERIAL OVER THE AREA TO BE PATCHED.
2. REMOVE AND REPLACE WITH CLASS C OR D PATCH.
3. REPLACE HMA MATERIAL OVER THE AREA TO BE PATCHED.

SEQUENCE OF CONSTRUCTION (MILLING FIRST)

1. MILL HMA FIRST IF THERE IS AT LEAST 4 1/2 INCHES OR MORE OF HMA MATERIAL ON TOP OF THE EXISTING PAVEMENT OR IF THE PAVEMENT IS FULL DEPTH HMA. A MINIMUM OF 2 INCHES OF HMA MATERIAL SHALL BE IN PLACE AFTER MILLING.
2. REMOVE AND REPLACE WITH FULL DEPTH CLASS D PATCHES TO TOP OF MILLED SURFACE.

ALL DIMENSIONS ARE IN INCHES (MILLIMETERS) UNLESS OTHERWISE SHOWN.

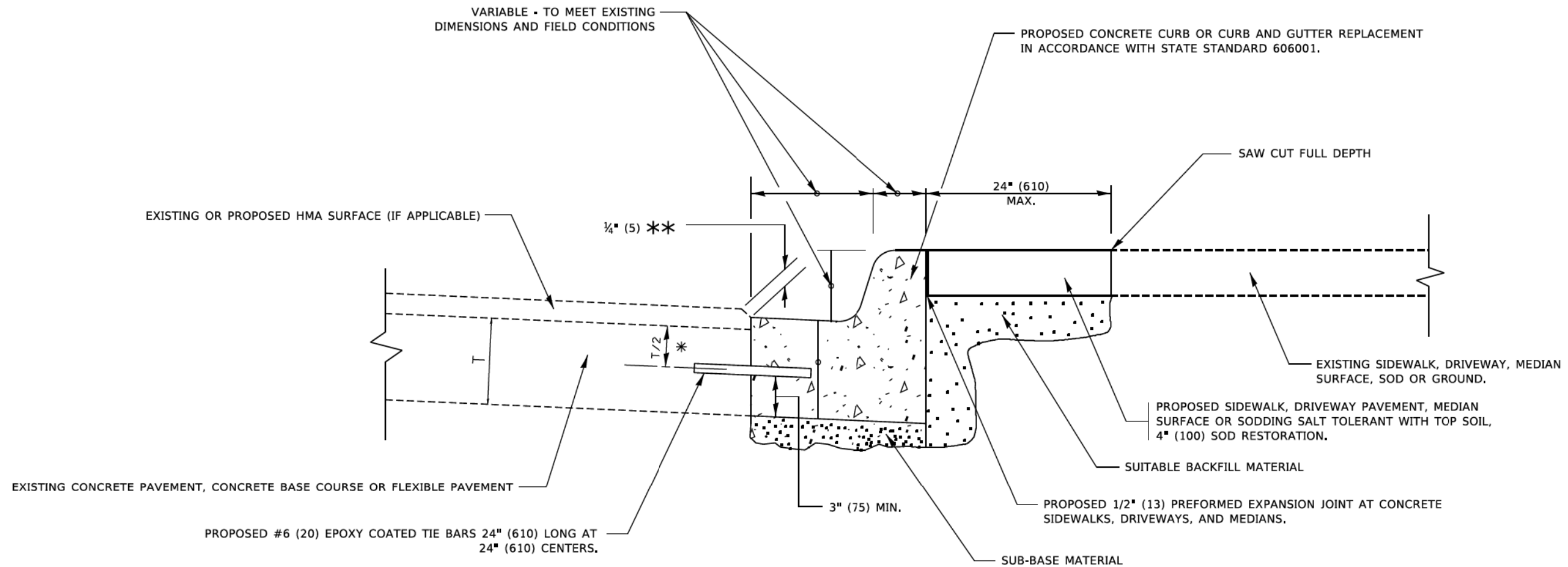
COPYRIGHT © 2017 BY BAXTER & WOODMAN, INC.
 STATE OF ILLINOIS - PROFESSIONAL DESIGN FIRM
 No. 18-105-0018-01-0000-01-0000-01-0000-01-0000
 PROJECT NO. 18-105-0018-01-0000-01-0000-01-0000-01-0000
 DATE 4/1/2022
 FILENAME: ca\projects\dstad22x34\bd22.dgn

FILE NAME =	USER NAME = bauerdl	DESIGNED - R. SHAH	REVISED - A. ABBAS 04-27-98
ca\projects\dstad22x34\bd22.dgn		DRAWN -	REVISED - R. BORO 01-01-07
	PLOT SCALE = 50.000' / IN.	CHECKED -	REVISED - R. BORO 09-04-07
	PLOT DATE = 10/27/2008	DATE - 10-25-94	REVISED - K. ENG 10-27-08

**STATE OF ILLINOIS
DEPARTMENT OF TRANSPORTATION**

PAVEMENT PATCHING FOR HMA SURFACED PAVEMENT	
SCALE: NONE	SHEET NO. 1 OF 1 SHEETS
STA.	TO STA.

F.A. RTE.	SECTION	COUNTY	TOTAL SHEETS	SHEET NO.
1677	20-00025-00-RS	LAKE	25	19
BD400-04 (BD-22)		CONTRACT NO. 61H79		
FED. ROAD DIST. NO. 1 ILLINOIS FED. AID PROJ. 20-00025-00-RS				



- * 3" (75) MINIMUM FROM TOP AND BOTTOM OF THE CONCRETE PAVEMENT OR BASE COURSE.
- ** IF THE FINAL SURFACE OF THE PAVEMENT IS CONCRETE, THE GUTTER IS TO BE FLUSH WITH THE PAVEMENT.

CURB OR CURB AND GUTTER REMOVAL AND REPLACEMENT

ALL DIMENSIONS ARE IN INCHES (MILLIMETERS)
UNLESS OTHERWISE SHOWN.

COPYRIGHT © 2017 BY BAXTER & WOODMAN, INC.
 STATE OF ILLINOIS - PROFESSIONAL DESIGN FIRM: P:\proj\20-00025-00-RS\20-00025-00-RS-01\Drawings\20-00025-00-RS-01-01.dwg
 FILE NAME: 20-00025-00-RS-01-01.dwg
 PLOT DATE: 7/11/2019

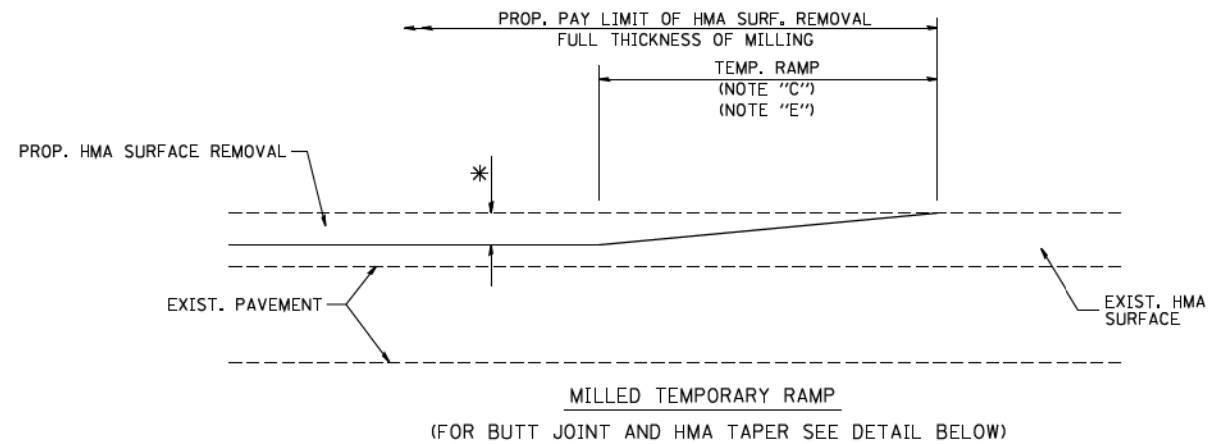
USER NAME	DESIGNED -	REVISED -
footem	A. HOUSEH	A. ABBAS 03-21-97
	DRAWN -	REVISED -
		M. GOMEZ 01-22-01
PLOT SCALE = 50,0000 1 / in.	CHECKED -	REVISED -
		R. BORO 12-15-09
PLOT DATE = 7/11/2019	DATE -	REVISED -
	03-11-94	K. SMITH 07-11-19

**STATE OF ILLINOIS
DEPARTMENT OF TRANSPORTATION**

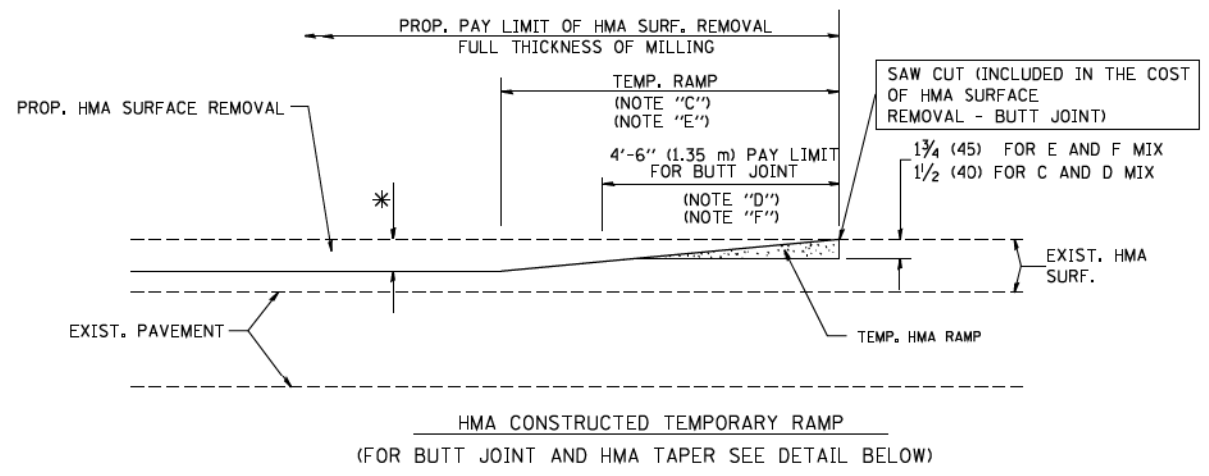
**CURB OR CURB AND GUTTER
REMOVAL AND REPLACEMENT**

SCALE: NONE SHEET 1 OF 1 SHEETS STA. TO STA.

F.A. RTE.	SECTION	COUNTY	TOTAL SHEETS	SHEET NO.
1677	20-00025-00-RS	LAKE	25	20
BD600-06 (BD-24)		CONTRACT NO. 61H79		
ILLINOIS FED. AID PROJEC 20-00025-00-RS				

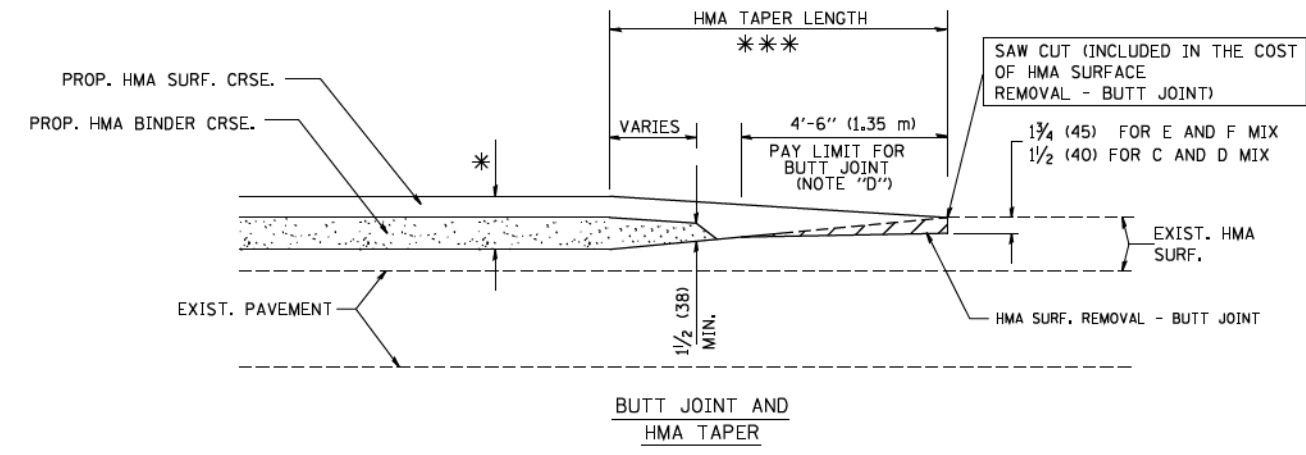


OPTION 1

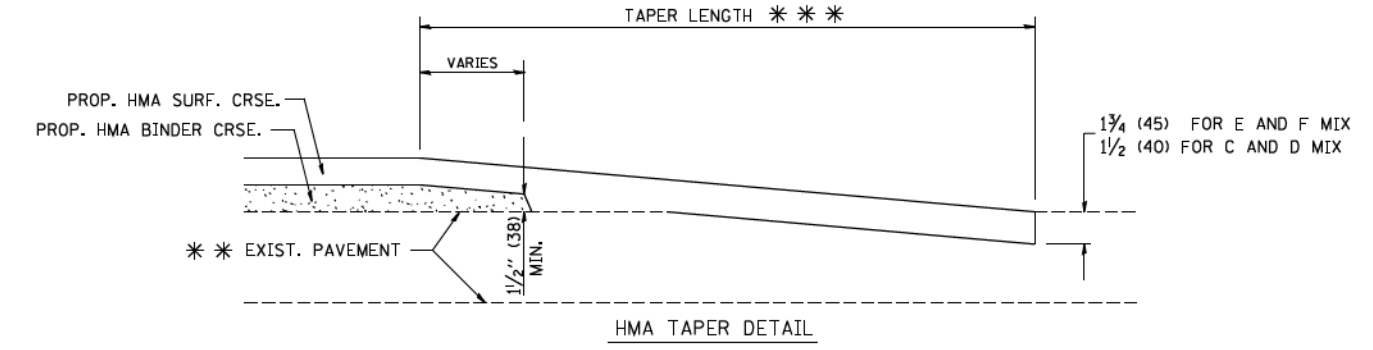
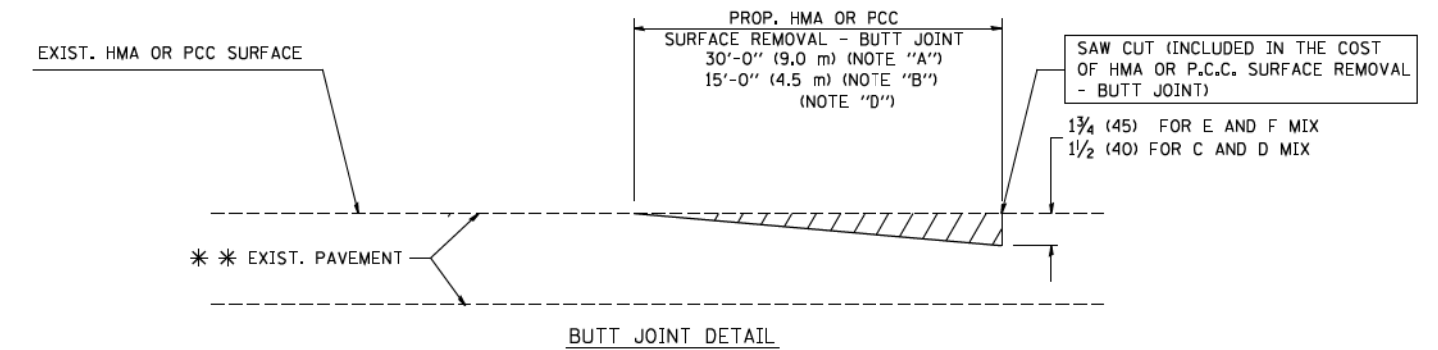


OPTION 2

TYPICAL TEMPORARY RAMP



**TYPICAL BUTT JOINT AND HMA TAPER
FOR MILLING AND RESURFACING**



**TYPICAL BUTT JOINT AND HMA TAPER
FOR RESURFACING ONLY**

*** PC CONCRETE, HMA OR HMA RESURFACED PAVEMENT.

NOTES

- A: MAINLINE ROADWAYS AND MAJOR SIDE ROADS.
 - B: MINOR SIDE ROADS.
 - C: THE TEMP. RAMP SHALL BE CONSTRUCTED IMMEDIATELY UPON REMOVAL OF THE EXISTING HMA SURFACE.
 - D: THE BUTT JOINT SHALL BE CONSTRUCTED IMMEDIATELY PRIOR TO PLACING THE PROPOSED HMA COURSES.
 - E: TAPER THE TEMP. RAMP AT A RATE OF 3'-0" (900 mm) PER 1 INCH (25 mm) OF MILLING THICKNESS.
 - F: INSTALLATION AND REMOVAL OF THE 4'-6" (1.35 m) TEMP. RAMP IS INCLUDED IN COST OF HMA SURFACE REMOVAL - BUTT JOINT
 - G: SEE ARTICLE 406.08 AND 406.14 OF THE STANDARD SPECIFICATIONS FOR "HMA AND/OR PCC SURFACE REMOVAL, BUTT JOINT".
- ✱ SEE TYPICAL SECTIONS FOR MILLING THICKNESS.
- *** 20'-0" (6.1 m) PER 1 (25) RESURFACING (NOTE "A")
10'-0" (3.0 m) PER 1 (25) RESURFACING (NOTE "B")

BASIS OF PAYMENT:

THE BUTT JOINT WILL BE PAID FOR AT THE CONTRACT UNIT PRICE PER SQUARE YARD (SQUARE METER) FOR "HOT-MIX ASPHALT SURFACE REMOVAL - BUTT JOINT" OR FOR "PORTLAND CEMENT CONCRETE SURFACE REMOVAL- BUTT JOINT".

ALL DIMENSIONS ARE IN INCHES (MILLIMETERS) UNLESS OTHERWISE SHOWN.

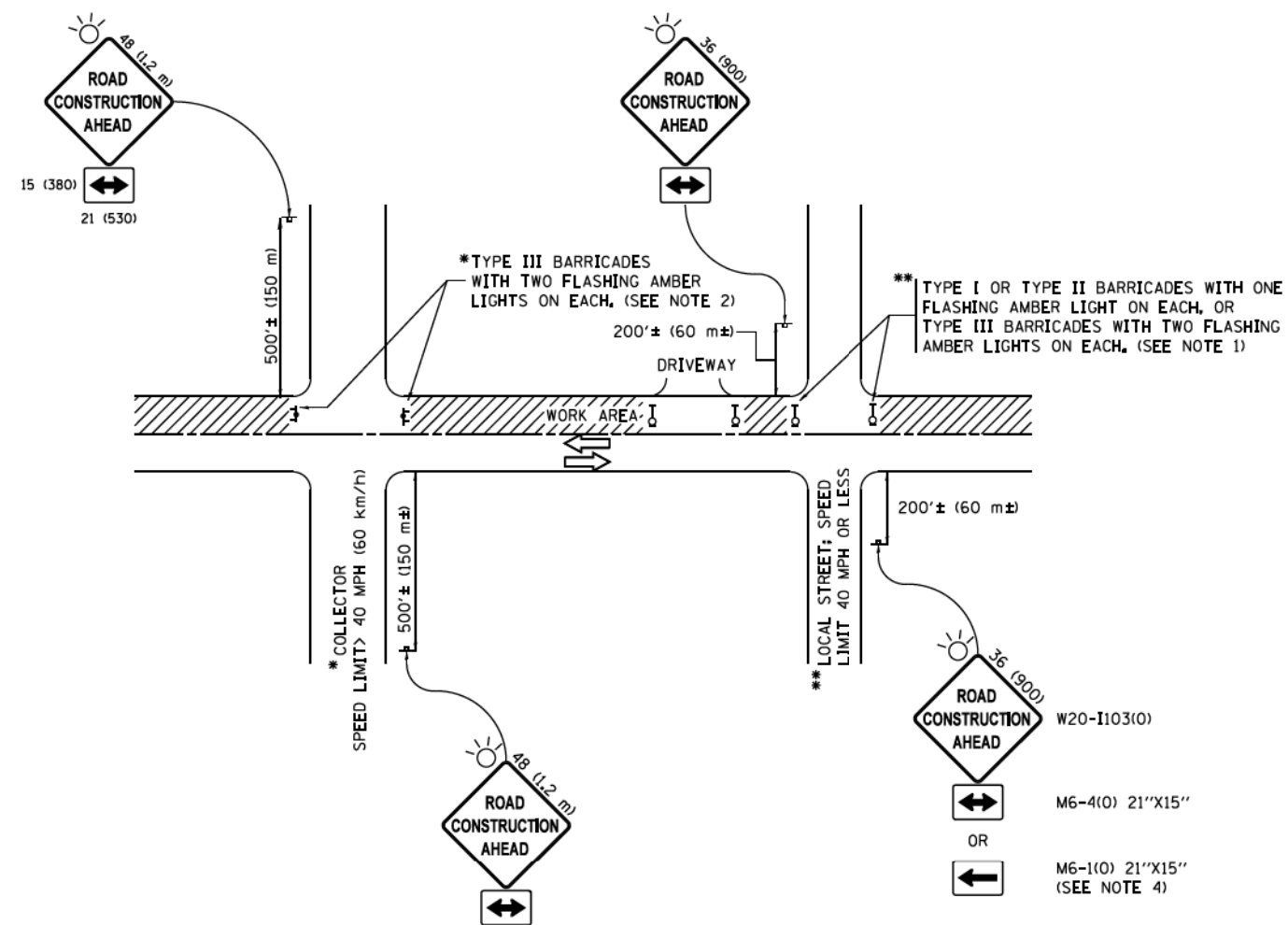
COPYRIGHT © 2017, BY BAXTER & WOODMAN, INC.
 STATE OF ILLINOIS - PROFESSIONAL DESIGN FIRM, PROJECT No. 20025-00-RS, DRAWING No. 20025-00-RS-02, DATE 04/17/2022, FILED IN PROJECT 20025-00-RS, COUNTY OF LAKE, PROJECT LOCATION: I-55/US-41, ILLINOIS.

FILE NAME = W:\diststd\22x34\bd32.dgn	USER NAME = geglano	DESIGNED - M. DE YONG	REVISED - R. SHAH 10-25-94
		DRAWN -	REVISED - A. ABBAS 03-21-97
PLOT SCALE = 50.0000' / IN.		CHECKED -	REVISED - M. GOMEZ 04-06-01
PLOT DATE = 1/4/2008		DATE - 06-13-90	REVISED - R. BORO 01-01-07

**STATE OF ILLINOIS
DEPARTMENT OF TRANSPORTATION**

BUTT JOINT AND HMA TAPER DETAILS	
SCALE: NONE	SHEET NO. 1 OF 1 SHEETS
STA.	TO STA.

F.A. RTE.	SECTION	COUNTY	TOTAL SHEETS	SHEET NO.
	20-00025-00-RS	LAKE	25	21
BD400-05 BD32		CONTRACT NO. 61H79		
FED. ROAD DIST. NO. 1 ILLINOIS FED. AID PROJ. 20-00025-00-RS				



NOTES:

1. SIDE ROAD WITH A SPEED LIMIT OF 40 MPH (60 km/h) OR LESS AS SHOWN ON THE DRAWING AND AS DIRECTED BY THE ENGINEER:
 - a) ONE "ROAD CONSTRUCTION AHEAD" SIGN 36 x 36 (900x900) WITH A FLASHER MOUNTED ON IT APPROXIMATELY 200' (60 m) IN ADVANCE OF THE MAIN ROUTE.
 - b) THE CLOSED PORTION OF THE MAIN ROUTE SHALL BE PROTECTED BY BLOCKING WITH TYPE I, TYPE II OR TYPE III BARRICADES, 1/3 OF THE CROSS SECTION OF THE CLOSED PORTION.
2. SIDE ROAD WITH A SPEED LIMIT GREATER THAN 40 MPH (60 km/h) AS SHOWN ON THE DRAWING AND AS DIRECTED BY THE ENGINEER:
 - a) ONE "ROAD CONSTRUCTION AHEAD" SIGN 48 x 48 (1.2 m x 1.2 m) WITH A FLASHER MOUNTED ON IT APPROXIMATELY 500' (150 m) IN ADVANCE OF THE MAIN ROUTE.
 - b) THE CLOSED PORTION OF THE MAIN ROUTE SHALL BE PROTECTED BY BLOCKING WITH TYPE III BARRICADES, 1/2 OF THE CROSS SECTION OF THE CLOSED PORTION.
3. CONES MAY BE SUBSTITUTED FOR BARRICADES OR DRUMS AT HALF THE SPACING DURING DAY OPERATIONS. CONES SHALL BE A MINIMUM OF 28 (710) IN HEIGHT.
4. WHEN THE SIDE ROAD LIES BETWEEN THE BEGINNING OF THE MAINLINE SIGNING AND THE WORK ZONE, A SINGLE HEADED ARROW (M6-1) SHALL BE USED IN LIEU OF THE DOUBLE HEADED ARROW (M6-4).
5. WHEN WORK IS BEING PERFORMED ON A SIDE ROAD OR DRIVEWAY, FOLLOW THE APPLICABLE STANDARD(S). THE DIRECTIONAL ARROW (M6-1 OR M6-4) SHALL BE COVERED OR REMOVED WHEN NO LONGER CONSISTENT WITH THE TRAFFIC CONTROL SET-UP.
6. ADVANCE WARNING SIGNS ARE TO BE OMITTED ON DRIVEWAYS UNLESS OTHERWISE SPECIFIED IN THE PLANS OR BY THE ENGINEER.
7. THE TRAFFIC CONTROL AND PROTECTION FOR SIDE ROADS, INTERSECTIONS, AND DRIVEWAYS SHALL BE INCLUDED IN THE COST OF SPECIFIED TRAFFIC CONTROL STANDARDS OR ITEMS.

All dimensions are in inches (millimeters) unless otherwise shown.

COPYRIGHT © 2017, BY BAXTER & WOODMAN, INC.
 STATE OF ILLINOIS - PROFESSIONAL DESIGN FIRM
 No. 10-1077-0001 - EXPIRES 12/31/2017
 PROJECT: 20-0025-00-RS - ILLINOIS DEPARTMENT OF TRANSPORTATION
 FILE: C:\Users\jwoodman\Documents\Projects\20-0025-00-RS\Drawings\TC-10\TC-10.dgn

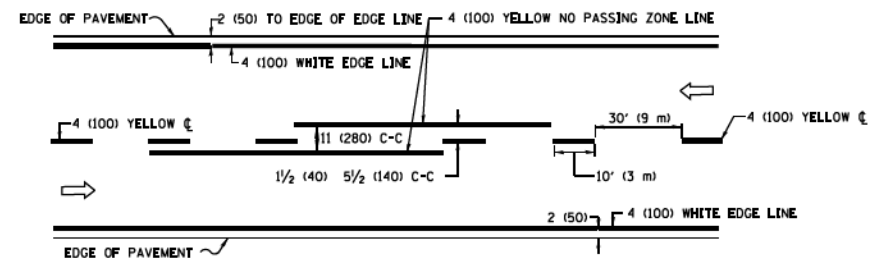
FILE NAME =	USER NAME = footemj	DESIGNED - LJA	REVISED - A, HOUSEH 10-15-96
PROJECT =	PROJECT =	CHECKED -	REVISED - T, RAMMACHER 01-06-00
PLOT SCALE = 50.000' / 1"	DATE = 06-89	DATE = 06-89	REVISED - A, SCHUETZE 07-01-13
Default	PLOT DATE = 9/15/2016	DATE = 06-89	REVISED - A, SCHUETZE 09-15-16

**STATE OF ILLINOIS
DEPARTMENT OF TRANSPORTATION**

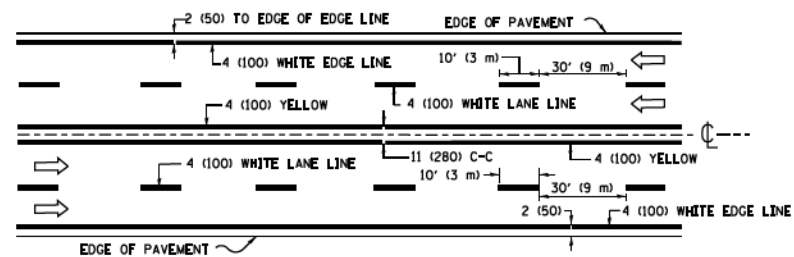
**TRAFFIC CONTROL AND PROTECTION FOR
SIDE ROADS, INTERSECTIONS, AND DRIVEWAYS**

SCALE: NONE SHEET 1 OF 1 SHEETS STA. TO STA.

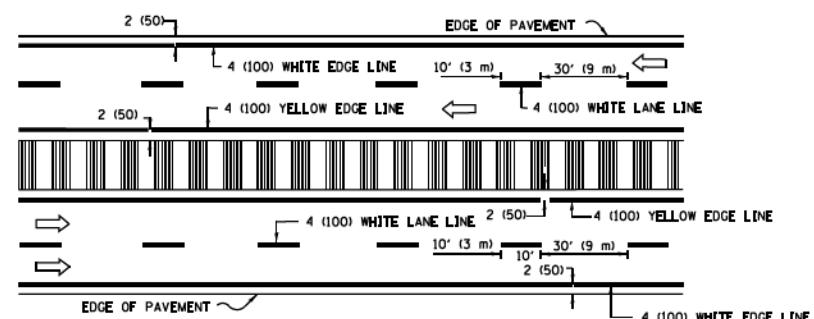
F.A. RTE.	SECTION	COUNTY	TOTAL SHEETS	SHEET NO.
	20-0025-00-RS	LAKE	25	22
TC-10			CONTRACT NO. 61H79	
ILLINOIS FED. AID PROJ. 20-0025-00-RS				



2-LANE ROADWAY

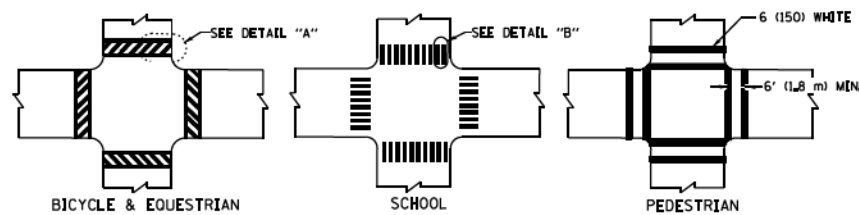


MULTI-LANE UNDIVIDED



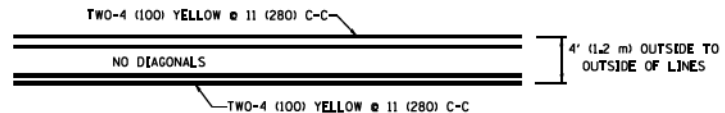
MULTI-LANE DIVIDED WITH MEDIAN

TYPICAL LANE AND EDGE LINE MARKING

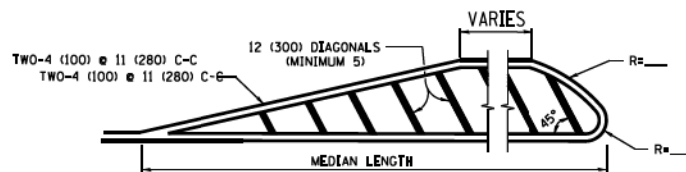


TYPICAL CROSSWALK MARKING

* MARKINGS SHALL BE INSTALLED PARALLEL TO THE CENTERLINE OF THE ROAD WHICH IT CROSSES

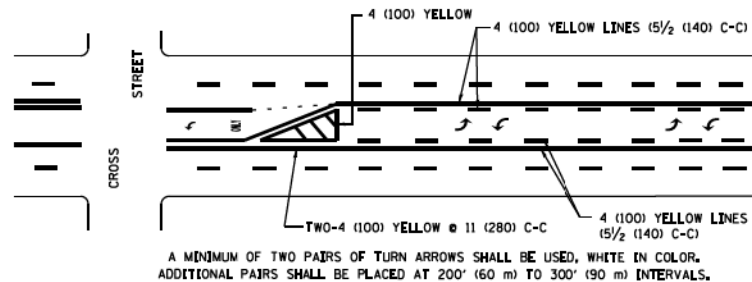


4' (1.2 m) WIDE MEDIANS ONLY



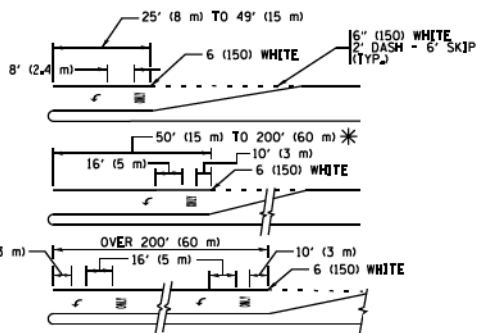
DIAGONAL LINE SPACING: 50' (15 m) C-C (LESS THAN 30MPH (50 km/h))
 75' (25 m) C-C 30MPH (50 km/h) TO 45MPH (70 km/h)
 150' (45 m) C-C (MORE THAN 45MPH (70 km/h))

MEDIANS OVER 4' (1.2 m) WIDE



MEDIAN WITH TWO-WAY LEFT TURN LANE

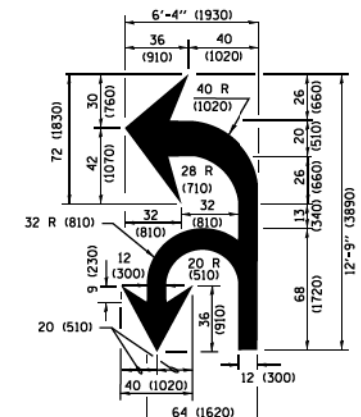
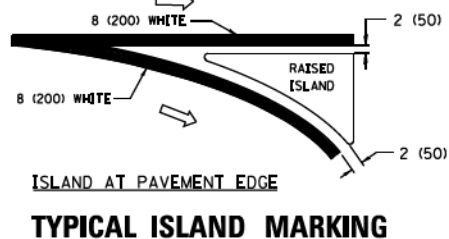
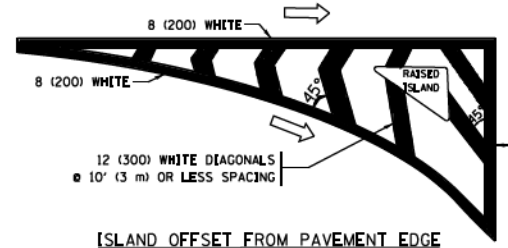
TYPICAL PAINTED MEDIAN MARKING



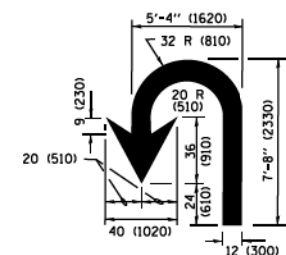
FULL SIZE LETTERS 8' (2.4 m) AND ARROWS SHALL BE USED.
 * AREA = 15.6 SQ. FT. (1.5 m²) * AREA = 20.8 SQ. FT. (1.9 m²)
 * TURN LANES IN EXCESS OF 400' (120 m) IN LENGTH MAY HAVE AN ADDITIONAL SET OF ARROW - "ONLY" INSTALLED MIDWAY BETWEEN THE OTHER TWO SETS OF ARROW - "ONLY".

TYPICAL LEFT (OR RIGHT) TURN LANE

TYPICAL TURN LANE MARKING



COMBINATION LEFT AND U-TURN



LANE REDUCTION TRANSITION

* LANE REDUCTION ARROWS REQUIRED AT SPEEDS OF 45 MPH OR GREATER OR WHEN SPECIFIED IN PLANS.

D(FT)	SPEED LIMIT
345	30
425	35
500	40
580	45
665	50
750	55

TYPE OF MARKING	WIDTH OF LINE	PATTERN	COLOR	SPACING /REMARKS
CENTERLINE ON 2 LANE PAVEMENT	4 (100)	SKIP-DASH	YELLOW	10' (3 m) LINE WITH 30' (9 m) SPACE
CENTERLINE ON MULTI-LANE UNDIVIDED PAVEMENT	2 @ 4 (100)	SOLID	YELLOW	11 (280) C-C
NO PASSING ZONE LINES FOR ONE DIRECTION FOR BOTH DIRECTIONS	4 (100) 2 @ 4 (100)	SOLID SOLID	YELLOW YELLOW	5/2 (140) C-C FROM SKIP-DASH CENTERLINE 11 (280) C-C OMIT SKIP-DASH CENTERLINE BETWEEN
LANE LINES	4 (100) 5 (125) ON FREEWAYS	SKIP-DASH SKIP-DASH	WHITE WHITE	10' (3 m) LINE WITH 30' (9 m) SPACE
DOTTED LINES (EXTENSIONS OF CENTER, LANE OR TURN LANE MARKINGS)	SAME AS LINE BEING EXTENDED	SKIP-DASH	SAME AS LINE BEING EXTENDED	2' (600) LINE WITH 6' (1.8 m) SPACE
EDGE LINES	4 (100)	SOLID	YELLOW-LEFT WHITE-RIGHT	OUTLINE MEDIANS IN YELLOW
TURN LANE MARKINGS	6 (150) LINE; FULL SIZE LETTERS & SYMBOLS (8' (2.4m))	SOLID	WHITE	SEE TYPICAL TURN LANE MARKING DETAIL
TWO WAY LEFT TURN MARKING	2 @ 4 (100) EACH DIRECTION 8' (2.4m) LEFT ARROW	SKIP-DASH AND SOLID IN PAIRS	YELLOW WHITE	10' (3 m) LINE WITH 30' (9 m) SPACE FOR SKIP-DASH 5/2 (140) C-C BETWEEN SOLID LINE AND SKIP-DASH LINE SEE TYPICAL TWO-WAY LEFT TURN MARKING DETAIL
CROSSWALK LINES (PEDESTRIAN) A. DIAGONALS (BIKE & EQUESTRIAN) B. LONGITUDINAL BARS (SCHOOL)	2 @ 6 (150) 12 (300) @ 45° 12 (300) @ 90°	SOLID SOLID SOLID	WHITE WHITE WHITE	NOT LESS THAN 6' (1.8 m) APART 2' (600) APART 2' (600) APART SEE TYPICAL CROSSWALK MARKING DETAILS.
STOP LINES	24 (600)	SOLID	WHITE	PLACE 4' (1.2 m) IN ADVANCE OF AND PARALLEL TO CROSSWALK. IF PRESENT, OTHERWISE, PLACE AT DESIRED STOPPING POINT, PARALLEL TO CROSSROAD CENTERLINE, WHERE POSSIBLE.
PAINTED MEDIANS	2 @ 4 (100) WITH 12 (300) DIAGONALS @ 45° NO DIAGONALS USED FOR 4' (1.2 m) WIDE MEDIANS	SOLID	YELLOW WHITE WHITE	11 (280) C-C FOR THE DOUBLE LINE SEE TYPICAL PAINTED MEDIAN MARKING.
CORE MARKING AND CHANNELIZING LINES	8 (200) WITH 12 (300) DIAGONALS @ 45°	SOLID	WHITE	DIAGONALS 15' (4.5 m) C-C (LESS THAN 30MPH (50 km/h)) 20' (6 m) C-C 30MPH (50 km/h) TO 45MPH (70 km/h) 30' (9 m) C-C (OVER 45MPH (70 km/h))
RAILROAD CROSSING	24 (600) TRANSVERSE LINES "RR" 15 6' (1.8 m) LETTERS 16 (400) LINE FOR "X"	SOLID	WHITE	SEE STATE STANDARD 780001 AREA OF "RR" = 3.6 SQ. FT. (0.33 m ²) EACH "X" = 54.0 SQ. FT. (5.0 m ²)
SHOULDER DIAGONALS (REQUIRED FOR SHOULDERS ≥ 8')	12 (300) @ 45°	SOLID	WHITE - RIGHT YELLOW - LEFT	50' (15 m) C-C (LESS THAN 30MPH (50 km/h)) 75' (25 m) C-C 30 MPH (50 km/h) TO 45MPH (70 km/h) 150' (45 m) C-C (OVER 45MPH (70 km/h))
U TURN ARROW	SEE DETAIL	SOLID	WHITE	16.3 SF
2 ARROW COMBINATION LEFT AND U TURN	SEE DETAIL	SOLID	WHITE	30.4 SF

FOR FURTHER DETAILS ON PAVEMENT MARKING REFER TO STANDARD SPECIFICATIONS FOR ROAD AND BRIDGE CONSTRUCTION AND STATE STANDARD 780001.

All dimensions are in inches (millimeters) unless otherwise shown.

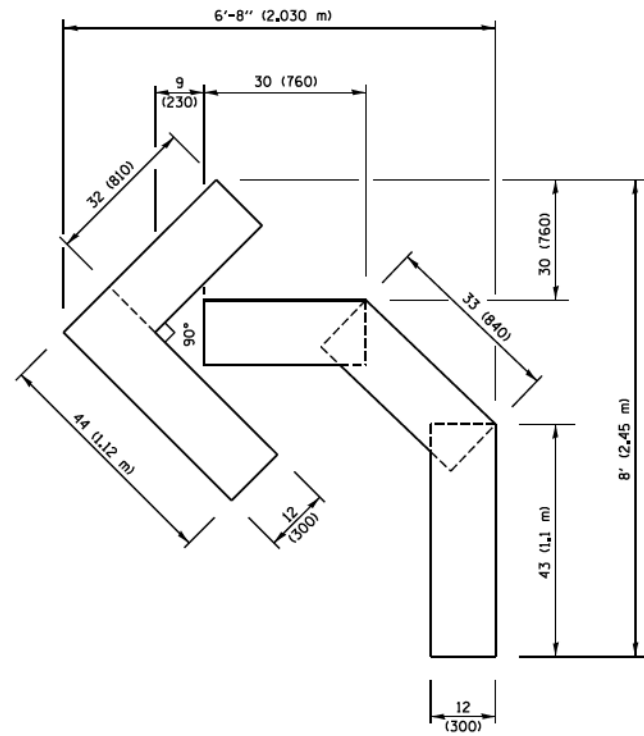
COPYRIGHT © 2017 BY BAXTER & WOODMAN, INC., STATE OF ILLINOIS - PROFESSIONAL DESIGN FIRM. NOT BE REPRODUCED OR TRANSMITTED IN ANY FORM OR BY ANY MEANS, ELECTRONIC OR MECHANICAL, WITHOUT THE EXPRESS WRITTEN PERMISSION OF BAXTER & WOODMAN, INC. PROJECT: ILLINOIS STATE ROUTE 222 AND 341 TO I-35; SHEET NO. 18 OF 24; DATE: 04/12/2017; FILE: \P\18-0000-01.dgn; FILE NAME: ILLINOIS STATE ROUTE 222 AND 341 TO I-35; SHEET NO. 18 OF 24; DATE: 04/12/2017; FILE: \P\18-0000-01.dgn

FILE NAME : \\sdsstd\22x34\18-0000-01.dgn	USER NAME = loyso	DESIGNED - EVERS	REVISED - C. JUCCIUS 09-09-09
PLOT SCALE = 50.000' / 1"	CHECKED -	DRAWN -	REVISED - C. JUCCIUS 07-01-13
PLOT DATE = 6/23/2017	DATE - 03-19-90	DATE -	REVISED - C. JUCCIUS 12-21-15
			REVISED - C. JUCCIUS 04-12-16

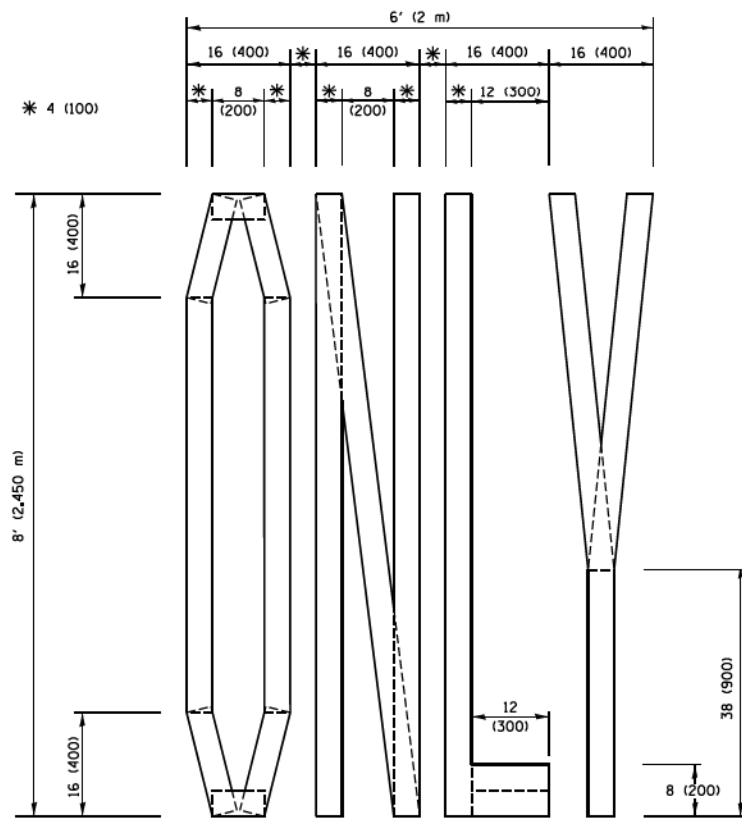
**STATE OF ILLINOIS
DEPARTMENT OF TRANSPORTATION**

SCALE: NONE	SHEET 1 OF 1 SHEETS	STA. TO STA.
-------------	---------------------	--------------

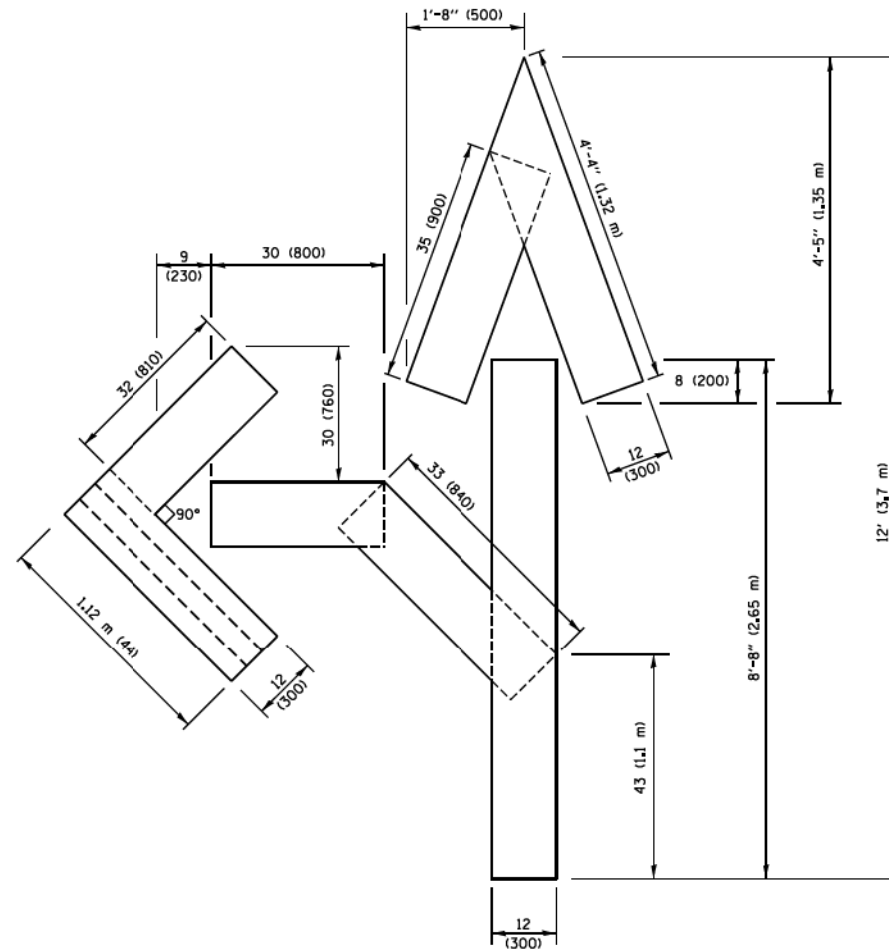
F.A. RTE.	SECTION	COUNTY	TOTAL SHEETS	SHEET NO.
	20-00025-00-RS	LAKE	25	23
TC-13		CONTRACT NO.	61H79	
ILLINOIS FED. AID PROJ. 20-00025-00-RS				



QUANTITY
 4 (100) LINE = 45.5 ft. (13.9 m)
 15.2 sq. ft. (1.41 sq. m)



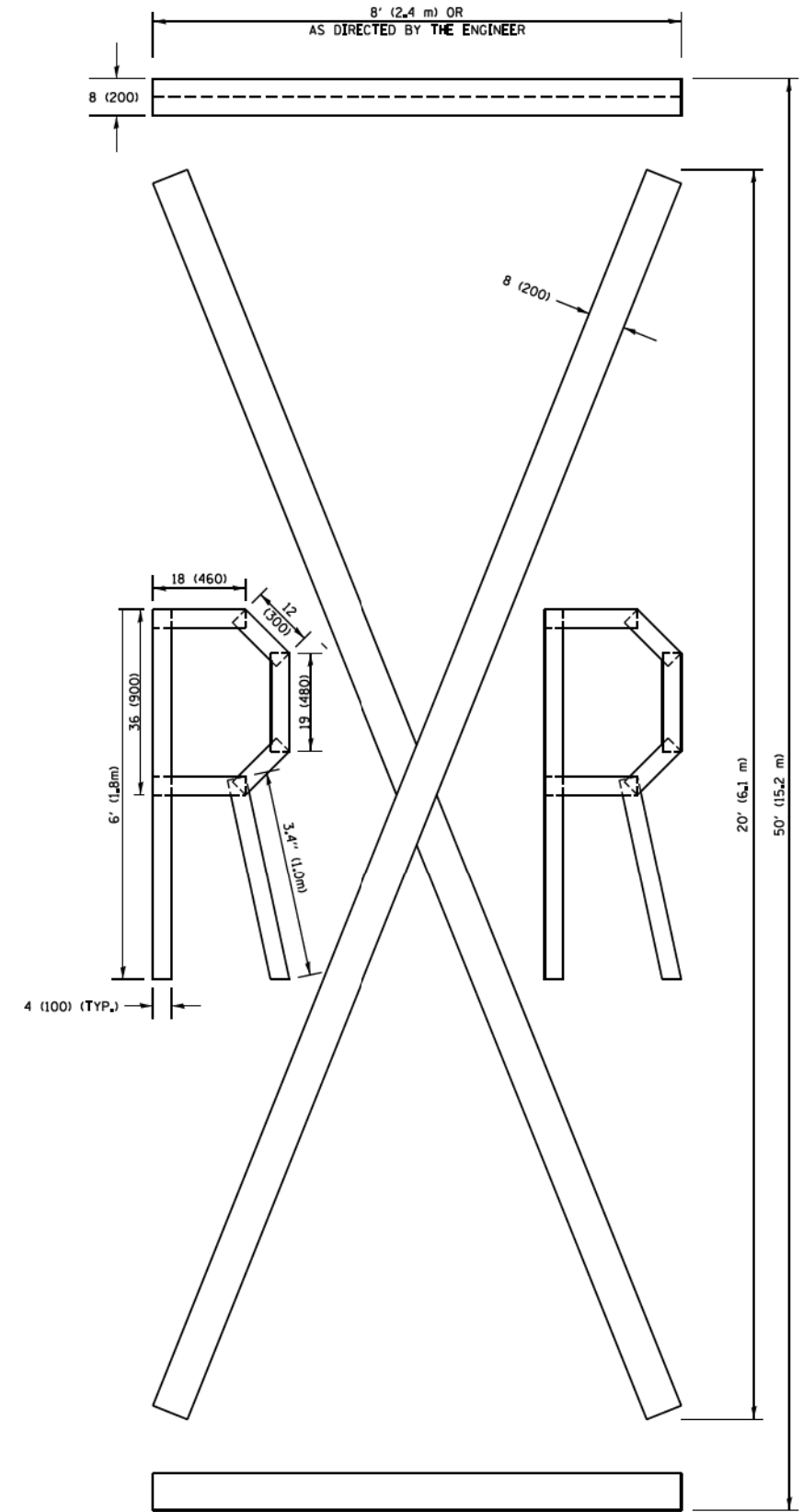
QUANTITY
 4 (100) LINE = 64.1 ft. (19.5 m)
 21.4 sq. ft. (1.99 sq. m)



QUANTITY
 4 (100) LINE = 82.5 ft. (25.1 m)
 27.5 sq. ft. (2.53 sq. m)

NOTE:

ALL QUANTITIES OF PLACEMENT ARE REPRESENTED IN LINEAR FEET OF 4" LINES TO MATCH THE 4" TEMPORARY TAPE PAY ITEM AND REPRESENTS THE TOTAL QUANTITY OF 4" TAPE REQUIRED.



QUANTITY
 4 (100) LINE = 225.9 ft. (68.9 m)
 75.3 sq. ft. (6.99 sq. m)

All dimensions are in inches (millimeters) unless otherwise shown.

COPYRIGHT © 2017, BY BAXTER & WOODMAN, INC.
 STATE OF ILLINOIS - PROFESSIONAL DESIGN FIRM
 No. 18-0747202
 PROJECT NO. 20-0025-00-RS
 PROJECT NAME: ILLINOIS DEPARTMENT OF TRANSPORTATION - SHORT TERM PAVEMENT MARKING LETTERS AND SYMBOLS - TC-16
 PROJECT LOCATION: ILLINOIS DEPARTMENT OF TRANSPORTATION - LAKE COUNTY
 PROJECT DATE: 09/15/2016

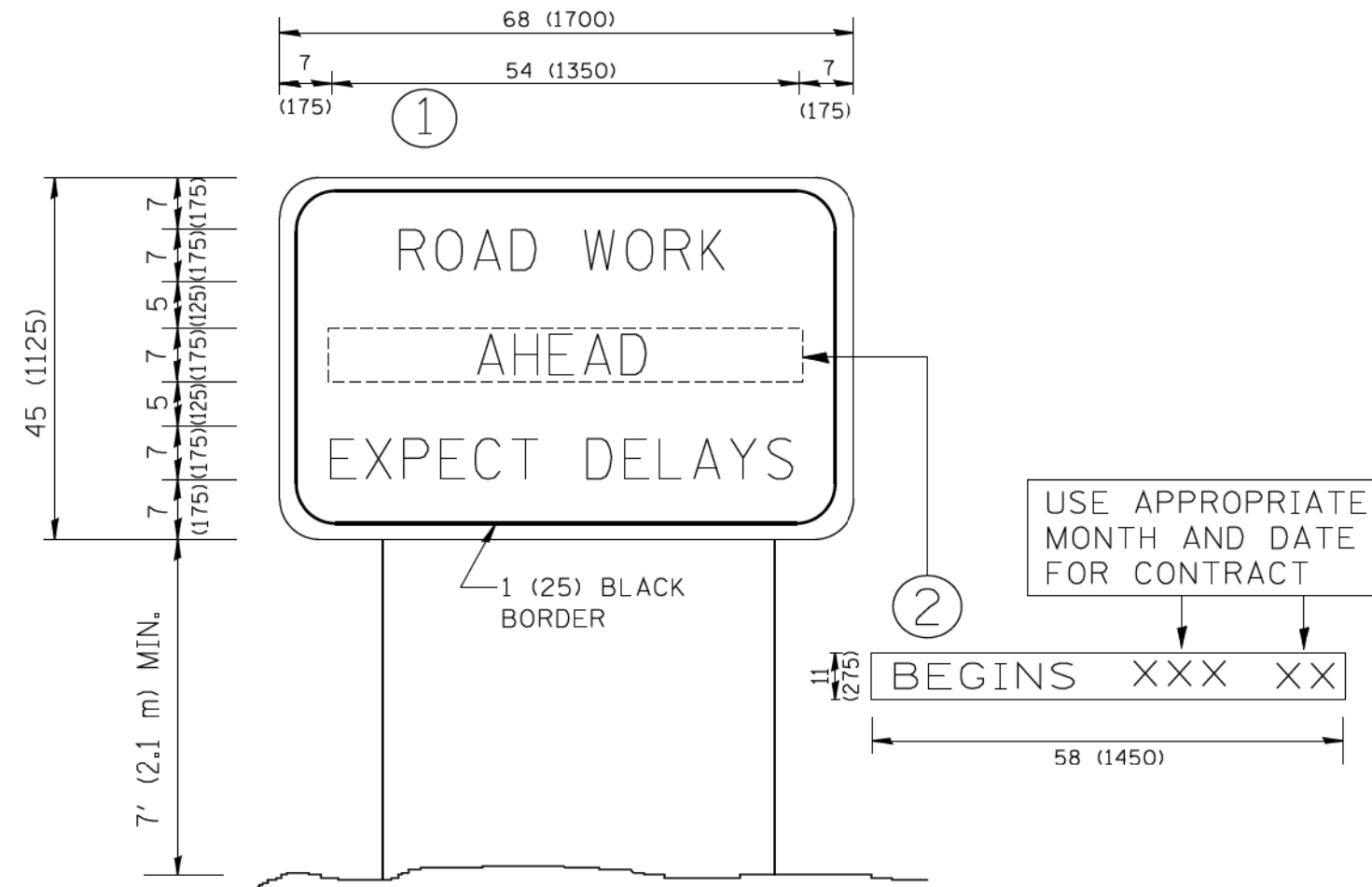
FILE NAME =	USER NAME = footemj	DESIGNED -	REVISED -T. RAMMACHER 03-02-98
PROJECT NO. = 20-0025-00-RS	PROJECT NAME = ILLINOIS DEPARTMENT OF TRANSPORTATION - SHORT TERM PAVEMENT MARKING LETTERS AND SYMBOLS - TC-16	PROJECT LOCATION = ILLINOIS DEPARTMENT OF TRANSPORTATION - LAKE COUNTY	REVISED -E. GOMEZ 08-28-00
PROJECT DATE = 9/15/2016	PROJECT DATE = 9/15/2016	CHECKED -	REVISED -E. GOMEZ 08-28-00
		DATE = 09-18-94	REVISED -A. SCHUETZE 09-15-16

**STATE OF ILLINOIS
 DEPARTMENT OF TRANSPORTATION**

SHORT TERM PAVEMENT MARKING LETTERS AND SYMBOLS			
SCALE: NONE	SHEET NO. 1 OF 1 SHEETS	STA.	TO STA.

F.A. RTE.	SECTION	COUNTY	TOTAL SHEETS	SHEET NO.
	20-0025-00-RS	LAKE	25	24
TC-16		CONTRACT NO. 61H79		
FED. ROAD DIST. NO. 1 ILLINOIS FED. AID PROJ. NO. 20-0025-00-RS				

COPYRIGHT © 2017 BY BAXTER & WOODMAN, INC.
 STATE OF ILLINOIS - PROFESSIONAL DESIGN FIRM
 No. 10-18077-0000 - Expires 12/31/2022
 PROJECT: 20-00025-00-RS - DISTRICT ONE DETAILS - TC.dgn
 FILE NAME = W:\diststd\22x34\tc22.dgn



NOTES:

1. USE BLACK LETTERING ON ORANGE BACKGROUND.
2. ERECT SIGNS IN ADVANCE OF THE LOCATION FOR THE "ROAD CONSTRUCTION AHEAD" SIGN AT LOCATIONS AS DIRECTED BY THE ENGINEER.
3. ERECT SIGN ① WITH INSTALLED PANEL ② ONE WEEK PRIOR TO THE START OF CONSTRUCTION.
4. REMOVE PANEL ② SOON AFTER THE START OF CONSTRUCTION.
5. SEE SPECIAL PROVISION FOR "TEMPORARY INFORMATION SIGNING" FOR ADDITIONAL INFORMATION.
6. ONE SIGN ASSEMBLY EQUALS 25.70 SQ. FT. (2.3 SQ. M.)
7. SHALL BE PAID FOR AS TEMPORARY INFORMATION SIGNING.

ALL DIMENSIONS ARE IN INCHES (MILLIMETERS) UNLESS OTHERWISE SHOWN.

FILE NAME =	USER NAME = geglano	DESIGNED -	REVISED - R. MIRS 09-15-97
W:\diststd\22x34\tc22.dgn		DRAWN -	REVISED - R. MIRS 12-11-97
	PLOT SCALE = 50.000' / IN.	CHECKED -	REVISED - T. RAMMACHER 02-02-99
	PLOT DATE = 1/4/2008	DATE -	REVISED - C. JUCIUS 01-31-07

**STATE OF ILLINOIS
DEPARTMENT OF TRANSPORTATION**

ARTERIAL ROAD INFORMATION SIGN	
SCALE: NONE	SHEET NO. 1 OF 1 SHEETS STA. TO STA.

F.A. RTE.	SECTION	COUNTY	TOTAL SHEETS	SHEET NO.
1677	20-00025-00-RS	LAKE	25	25
TC-22		CONTRACT NO. 61H79		
FED. ROAD DIST. NO. 1 ILLINOIS FED. AID PROJ. 20-00025-00-RS				