

STATE OF ILLINOIS
DEPARTMENT OF TRANSPORTATION

F.A.S. RTE.	SECTION	COUNTY	TOTAL SHEETS	SHEET NO.
791	17BR-1	MARION	12	1
		ILLINOIS	CONTRACT NO. 76P78	

D-98-022-22



PROPOSED HIGHWAY PLANS

FAS ROUTE 791 (SELMVILLE RD)
SECTION 17BR-1
BRIDGE JOINT REPLACEMENT & REPAIR
MARION COUNTY

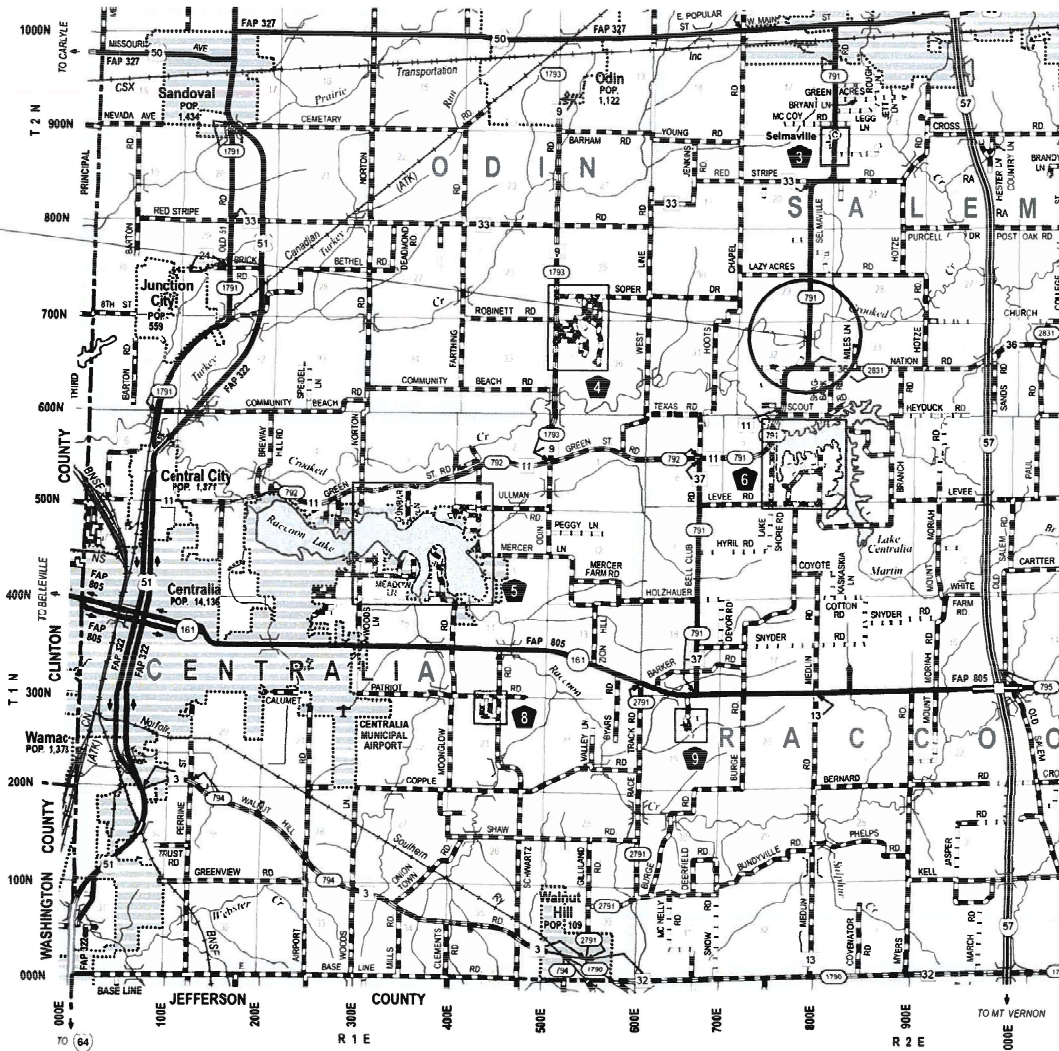
INDEX OF SHEETS

1. COVER SHEET
2. GENERAL NOTES, HIGHWAY STANDARDS, COMMITMENTS
3. SUMMARY OF QUANTITY
- 4-12. BRIDGE JOINT REPAIR PLANS

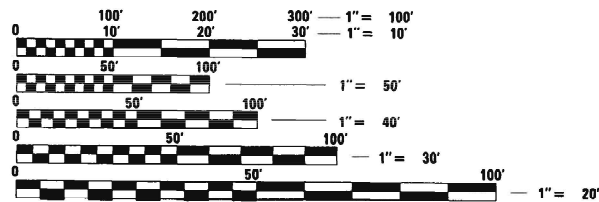
ADI

2021 ADT = 2850 (ACTUAL)
2022 ADT = 2900 (ESTIMATED)
2042 ADT = 3250 (ESTIMATED)
SU = 6.8% MU = 2.5%
DIT DIST = 50/50

C-98-051-22



3 SPAN WIDE FLANGE STEEL
BEAM STRUCTURE SUPPORTED
ON PILE BENT ABUTMENT AND
PIERS
SN 061-0078
LAT: 38.57361
LONG: -88.9999



FULL SIZE PLANS HAVE BEEN PREPARED USING STANDARD ENGINEERING SCALES. REDUCED SIZED PLANS WILL NOT CONFORM TO STANDARD SCALES. IN MAKING MEASUREMENTS ON REDUCED PLANS, THE ABOVE SCALES MAY BE USED.

J.U.L.I.E.
JOINT UTILITY LOCATION INFORMATION FOR EXCAVATORS
1-800-892-0123
OR 811

PROJECT ENGINEER – CHERYL KEPLAR
PROJECT MANAGER – TONI MANN

CONTRACT NO. 76P78

GROSS LENGTH = 169.198 FT. = 0.032 MILE
NET LENGTH = 169.198 FT. = 0.032 MILE

STATE OF ILLINOIS
DEPARTMENT OF TRANSPORTATION

SUBMITTED March 22, 2022
Stephen Travis
REGIONAL ENGINEER

May 13, 2022 [Signature]
ENGINEER OF DESIGN AND ENVIRONMENT

May 13, 2022 [Signature]
DIRECTOR OF HIGHWAYS PROJECT IMPLEMENTATION

PRINTED BY THE AUTHORITY
OF THE STATE OF ILLINOIS

HIGHWAY STANDARDS

000001-08 STANDARDS SYMBOLS ABBREVIATIONS & PATTERNS
 001001-02 AREAS OF REINFORCEMENT BARS
 001006 DECIMAL OF AN INCH AND OF A FOOT
 BLR 21-9 TYPICAL APPLICATION OF TRAFFIC CONTROL DEVICES FOR CONSTRUCTION ON RURAL LOCAL HIGHWAYS
 701901-08 TRAFFIC CONTROL DEVICES
 780001-05 TYPICAL PAVEMENT MARKINGS

GENERAL NOTES

UTILITIES KNOWN TO HAVE FACILITIES WITHIN THE PROJECT AREA:

CITATION OIL AND GAS CORPORATION	AT&T ILLINOIS
BP PIPELINES (NORTH AMERICA) INC.	AMERENUE
CHARTER COMMUNICATIONS, INC	COUNTRY MARK COOPERATIVE, LLP
TRI-COUNTY ELECTRIC COOPERATIVE, INC	VILLAGE OF ODIN

NO SURVEY WAS PERFORMED FOR THIS PROJECT AND PLANS WERE CREATED USING MICROFILM AND FIELD MEASUREMENTS.

THE PROPOSED PAVEMENT MARKING SHALL MATCH THE LOCATIONS OF THE EXISTING PAVEMENT MARKING, AS DIRECTED BY THE ENGINEER.

IF THE CONTRACTOR, FOR HIS CONSTRUCTION ACTIVITY, REMOVES TREES WITHIN THE RIGHT-OF-WAY LIMITS WHICH ARE NOT DESIGNATED ON THE PLANS FOR REMOVAL, I.E. IN ORDER TO GAIN ACCESS TO THE PROJECT SITE; IT WILL BE HIS RESPONSIBILITY TO REPLACE THE TREES AT A 1:1 RATIO. THE TREES WILL BE REPLACED WITH A 1 GALLON NATIVE ILLINOIS TREE SPECIES AND SHALL BE APPROVED BY THE ENGINEER. THE TREE REMOVAL AND TREE REPLACEMENT WILL BE AT THE CONTRACTOR'S EXPENSE, AND NO ADDITIONAL COMPENSATION WILL BE ALLOWED.

THE CONTRACTOR SHALL VERIFY THE EXISTENCE OF HIGHWAY LIGHTING, INTELLIGENT TRANSPORTATION SYSTEMS (I.T.S.) UTILITIES, AND/OR ELECTRICAL CABLES ASSOCIATED WITH TRAFFIC SIGNALS WITHIN THE PROJECT LIMITS. IF ANY OF THESE EXIST WITHIN THE PROJECT LIMITS, AND IF THESE ITEMS REQUIRE LOCATING, THE CONTRACTOR SHALL DO SO ACCORDING TO SECTION 803 OF THE STANDARD SPECIFICATIONS. THIS WORK SHALL BE PAID FOR ACCORDING TO ARTICLE 109.04 OF THE STANDARD SPECIFICATIONS.

TWO CHANGEABLE MESSAGE SIGNS SHALL BE REQUIRED FOR THIS PROJECT. THEY SHALL BE PLACED 2 WEEKS PRIOR TO THE BRIDGE CLOSURE AND SHALL REMAIN UP FOR THE DURATION OF THE PROJECT. THE CHANGEABLE MESSAGE SIGNS SHALL BE PLACED AT THE DIRECTION OF THE ENGINEER.

ALL TURF AREAS DISTURBED BY THE CONTRACTOR SHALL BE SEEDED WITH THE APPROPRIATE EROSION CONTROL, AS DIRECTED BY THE ENGINEER, AT THE CONTRACTOR'S EXPENSE.

NO COMMITMENTS

NO COMMITMENTS

REV. - MS

MODEL: Default
 FILE: M:\MS - P\110102-01\110102-01.dwg
 PLOT DATE: 3/22/2022
 PLOT SCALE: 40.0000 * / in.
 USER: chalandeske

USER NAME = chalandeske	DESIGNED -	REVISED -	STATE OF ILLINOIS DEPARTMENT OF TRANSPORTATION	GENERAL NOTES, LIST OF STANDARDS, AND COMMITMENTS	F.A.S. RTE.	SECTION	COUNTY	TOTAL SHEETS	SHEET NO.	
	DRAWN -	REVISED -			791	17BR-1	MARION	12	2	
PLOT SCALE = 40.0000 * / in.	CHECKED -	REVISED -			CONTRACT NO. 76P78					
PLOT DATE = 3/22/2022	DATE -	REVISED -			SCALE:	SHEET	OF	SHEETS	STA.	TO STA.

100% STATE

CODE NO.	ITEM	UNIT	TOTAL QUANTITY	CONSTR. CODE
				RURAL BRIDGE 0047 SN 061-0078
50102400	CONCRETE REMOVAL	CU YD	38.3	38.3
50300255	CONCRETE SUPERSTRUCTURE	CU YD	83.4	83.4
50800205	REINFORCEMENT BARS, EPOXY COATED	POUND	10060	10060
67100100	MOBILIZATION	L SUM	1	1
70107025	CHANGEABLE MESSAGE SIGN	CAL DA	158	158
* 78001110	PAINT PAVEMENT MARKING - LINE 4"	FOOT	875	875
X5870015	BRIDGE DECK CONCRETE SEALER	SQ FT	2130	2130
X7011800	TRAFFIC CONTROL AND PROTECTION, STANDARD BLR 21	L SUM	1	1
Z0001903	STRUCTURAL STEEL REMOVAL	POUND	8070	8070
* Z0007101	CONTAINMENT AND DISPOSAL OF LEAD PAINT CLEANING RESIDUES NO. 1	L SUM	1	1
* Z0010501	CLEANING AND PAINTING STEEL BRIDGE NO. 1	L SUM	1	1

* SPECIALTY ITEM

REV. - MS

MODEL: D:\default
 FILE: M:\asrc\p\illinois\challandeske\DOT_Offices\District_8\Projects\1087678\CAD\Drawings\087678-shs-500.dgn

USER NAME = challandeske	DESIGNED -	REVISED -	STATE OF ILLINOIS DEPARTMENT OF TRANSPORTATION	SUMMARY OF QUANTITIES				F.A.S. RTE.	SECTION	COUNTY	TOTAL SHEETS	SHEET NO.
PLOT SCALE = 100.0000' / in.	DRAWN -	REVISED -		791	17BR-1	MARION	12	3				
PLOT DATE = 3/22/2022	CHECKED -	REVISED -		SCALE: SHEET OF SHEETS STA. TO STA.				ILLINOIS FED. AID PROJECT		CONTRACT NO. 76P78		
	DATE -	REVISED -										

Existing Structure: 061-0078 was built in 1984 under contract 36107, O.R.6103 Sec 17 BR. This bridge consists of 3 spans supported on pile bent abutments and 2 pile bent piers. The wide flange beams were simple between the supports, whereas the deck was poured continuous over the piers.

The deck ends, mudwalls and approach ends shall be removed and replaced solid. In addition, the pier joints shall be eliminated and replaced with concrete diaphragms. Before replacing solid, the beam ends shall be cleaned and painted.

Construction shall be completed under full traffic closure.

GENERAL NOTES

Reinforcement bars designated (E) shall be epoxy coated.

Prior to pouring the new concrete deck, all heavy or loose rust, loose mill scale, and other loose or potentially detrimental foreign material shall be removed from the surfaces in contact with concrete. Tightly adhered paint may remain unless otherwise noted. Removal shall be accomplished by methods that will not damage the steel and the cost will be included in the pay item covering removal of the existing concrete.

As directed by the Engineer, existing construction accessories welded to the top flange of beams and girders shall be removed. The weld areas shall be ground flush and inspected for cracks using magnetic particle testing (MT) or dye penetrant testing (PT) by qualified personnel approved by the Engineer.

Any cracks that cannot be removed by grinding 1/4 inch deep shall be identified and reported to the Bureau of Bridges and Structures for further disposition. The cost of removing welded accessories, grinding and inspecting weld areas and grinding cracks will be paid for according to Article 109.04 of the Standard Specifications.

Plan dimensions and details relative to existing plans are subject to nominal construction variations. The Contractor shall field verify existing dimensions and details affecting new construction and make necessary approved adjustments prior to construction or ordering of materials. Such variations shall not be cause for additional compensation for a change in scope of the work, however, the Contractor will be paid for the quantity actually furnished at the unit price bid for the work.

The existing structural steel coating contains lead. The Contractor shall take appropriate precautions to deal with the presence of lead on this project.

Existing reinforcement extending into removal area shall be cleaned, straightened and incorporated into the new construction. Any reinforcement bars that are damaged during concrete removal operations shall be repaired or replaced using an approved bar splicer or anchorage system. Cost included with "Concrete Removal".

Cleaning and Painting of the existing structural steel shall be as specified in the special provisions for "Cleaning and Painting Existing Steel Structures". After removal of deck ends and end diaphragms, but prior to encasement of the steel beams, all beams, bearings, and other structural steel within 7 ft. (measured along the beam) of either side of deck joints shall be cleaned per Near White Blast Cleaning (SSPC-SP10).

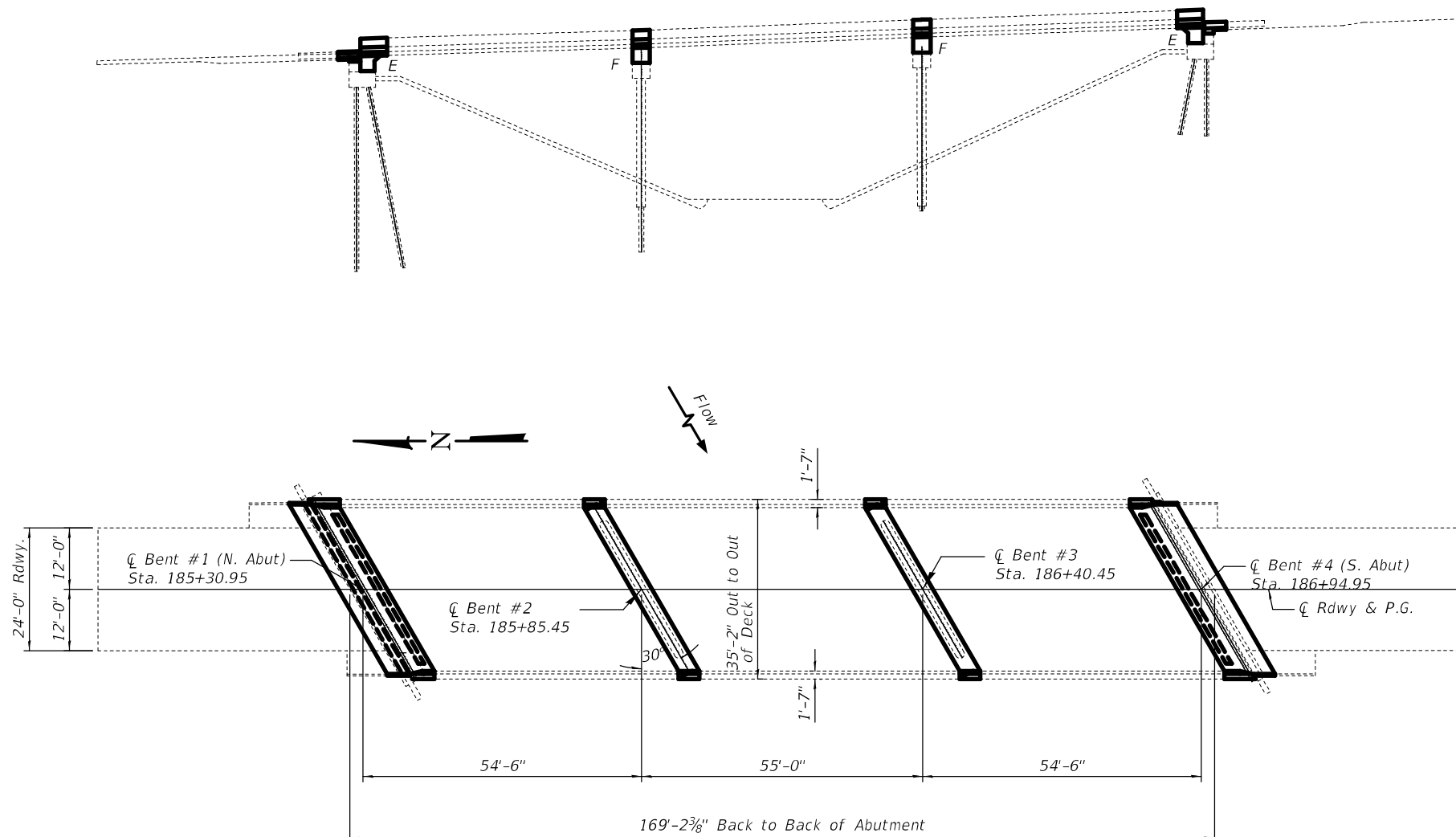
The designated areas cleaned per Near White Blast Cleaning shall be painted according to the requirements of paint system 1- 0Z/E/U. The color of the final finish coat for all steel surfaces shall be Reddish Brown (Munsell No. 2.5 YR 3/4).

SSPC QP1 and SSPC QP2 Certification is required for this Contract.

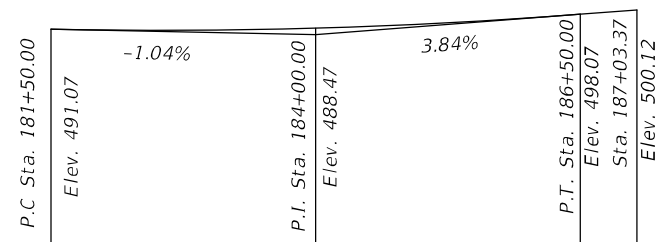
Bridge deck concrete sealer shall be placed on top/inside faces of (parapets & curbs) (full length) and on top of new concrete at joints.

The concrete at joints shall have its final finish tined according to Article 420.09(e)(1) of the Standard Specifications. Cost included with "Concrete Superstructure".

A minimum of 4 air monitors will be required to monitor abrasive blasting operations at this site. See special provisions for "Containment and Disposal of Lead Paint Cleaning Residues."



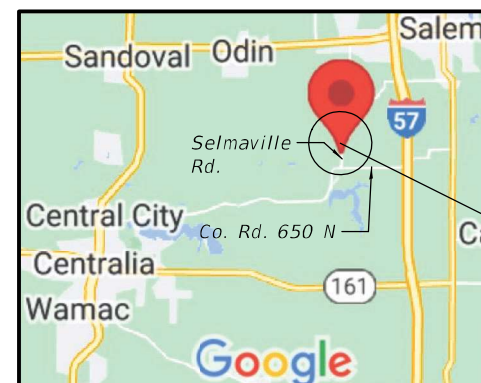
PLAN



EX. PROFILE GRADE

**DESIGN STRESSES
FIELD UNITS**

f'c = 4,000 psi
fy = 60,000 psi (Reinforcement)



LOCATION SKETCH

TOTAL BILL OF MATERIAL

ITEM	UNIT	TOTAL
Concrete Removal	Cu. Yd.	38.3
Concrete Superstructure	Cu. Yd.	83.4
Reinforcement Bars, Epoxy Coated	Pound	10060
Cleaning and Painting Steel Bridge, No. 1	L. Sum	1
Containment & Disposal of Lead Paint Cleaning Residues No. 1	L. Sum	1
Bridge Deck Concrete Sealer	Sq. Ft.	2130
Structural Steel Removal	Pound	8070

SHEET INDEX

- 1) General Plan and Elevation
- 2) Deck Section
- 3) Joint Removal & Replacement (Abut.)
- 4) X-Sec (Appr. Removal & Replacement)
- 5) Joint Removal & Replacement (Piers)
- 6) Existing Joint Details
- 7) Proposed Joint Details
- 8) Diaphragms at Abutments
- 9) Diaphragms at Piers



EXPIRES 11-30-2022

MODEL: 061-0078-76P78-01
FILE NAME: P:\Public\Drawings\DOT Office\District 8\Projects\0817678\CADD\Drawings\Structures\061-0078.dgn

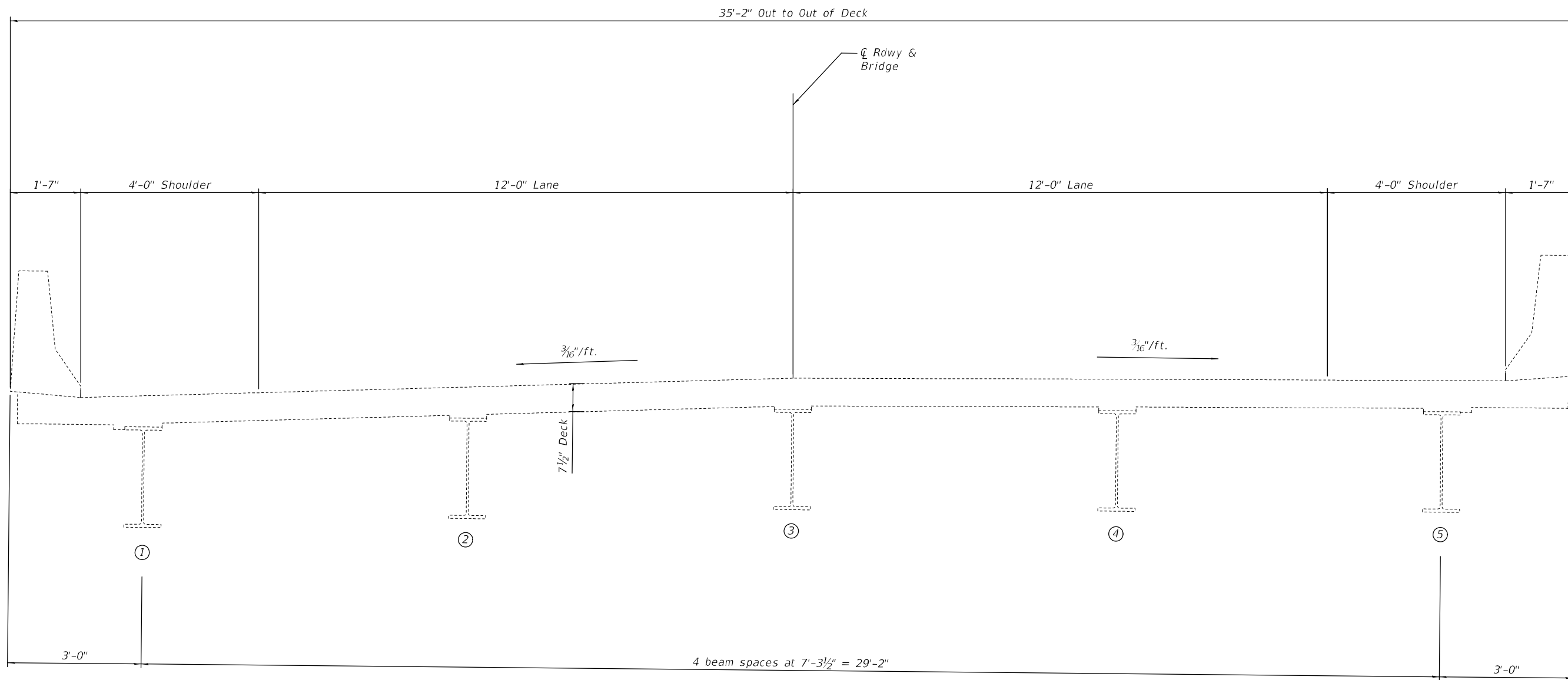
USER NAME = vlnsonay	DESIGNED - AYV	REVISED -
	DRAWN - AYV	REVISED -
PLOT SCALE = 0:2.0000 " = 1" / in.	CHECKED -	REVISED -
PLOT DATE = 4/25/2022	DATE -	REVISED -

**STATE OF ILLINOIS
DEPARTMENT OF TRANSPORTATION**

**GENERAL PLAN & ELEVATION (Selma Rd. over Crooked Creek)
SN 061-0078**

SCALE: SHEET 1 OF 9 SHEETS STA. TO STA.

F.A.S. RTE.	SECTION	COUNTY	TOTAL SHEETS	SHEET NO.
791	17BR-1	MARION	12	4
CONTRACT NO. 76P78				
ILLINOIS FED. AID PROJECT				



DECK SECTION (AWAY FROM ABUTMENT/PIER)

Looking South)

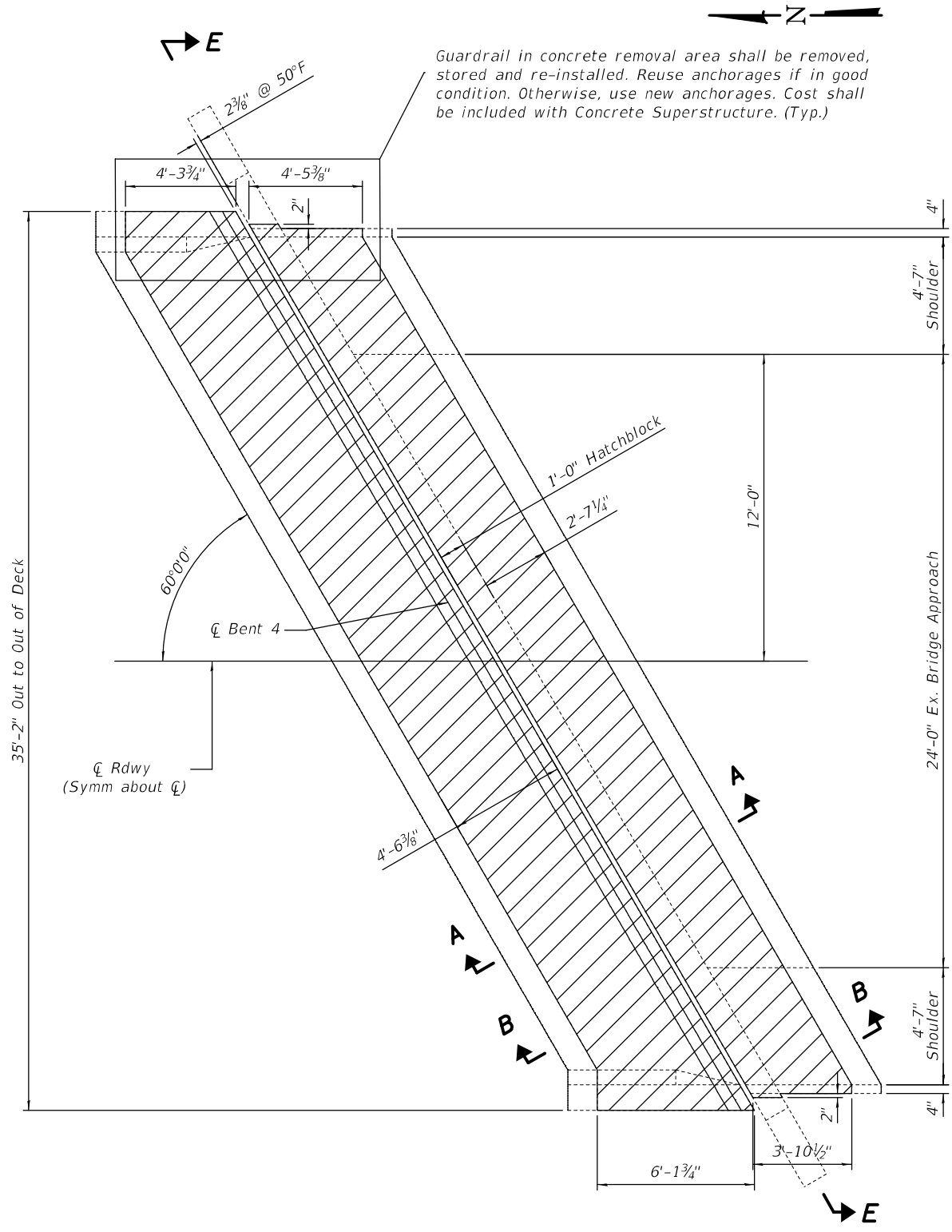
MODEL: 0610078-76P78-002
FILE NAME: P:\Work\pawhamley\com\FW\DOT\Documents\DOT_Offices\Diarrt_S\Project\0376P78_CADD\Structures\0610078.dgn

USER NAME =	vinsonay	DESIGNED -	AYV	REVISED -	
DRAWN -	AYV	CHECKED -		REVISED -	
PLOT SCALE =	2:6.4561 '"/in.	DATE -		REVISED -	
PLOT DATE =	4/4/2022				

**STATE OF ILLINOIS
DEPARTMENT OF TRANSPORTATION**

DECK CROSS SECTION SN 061-0078	
SCALE:	SHEET 2 OF 9 SHEETS STA. TO STA.

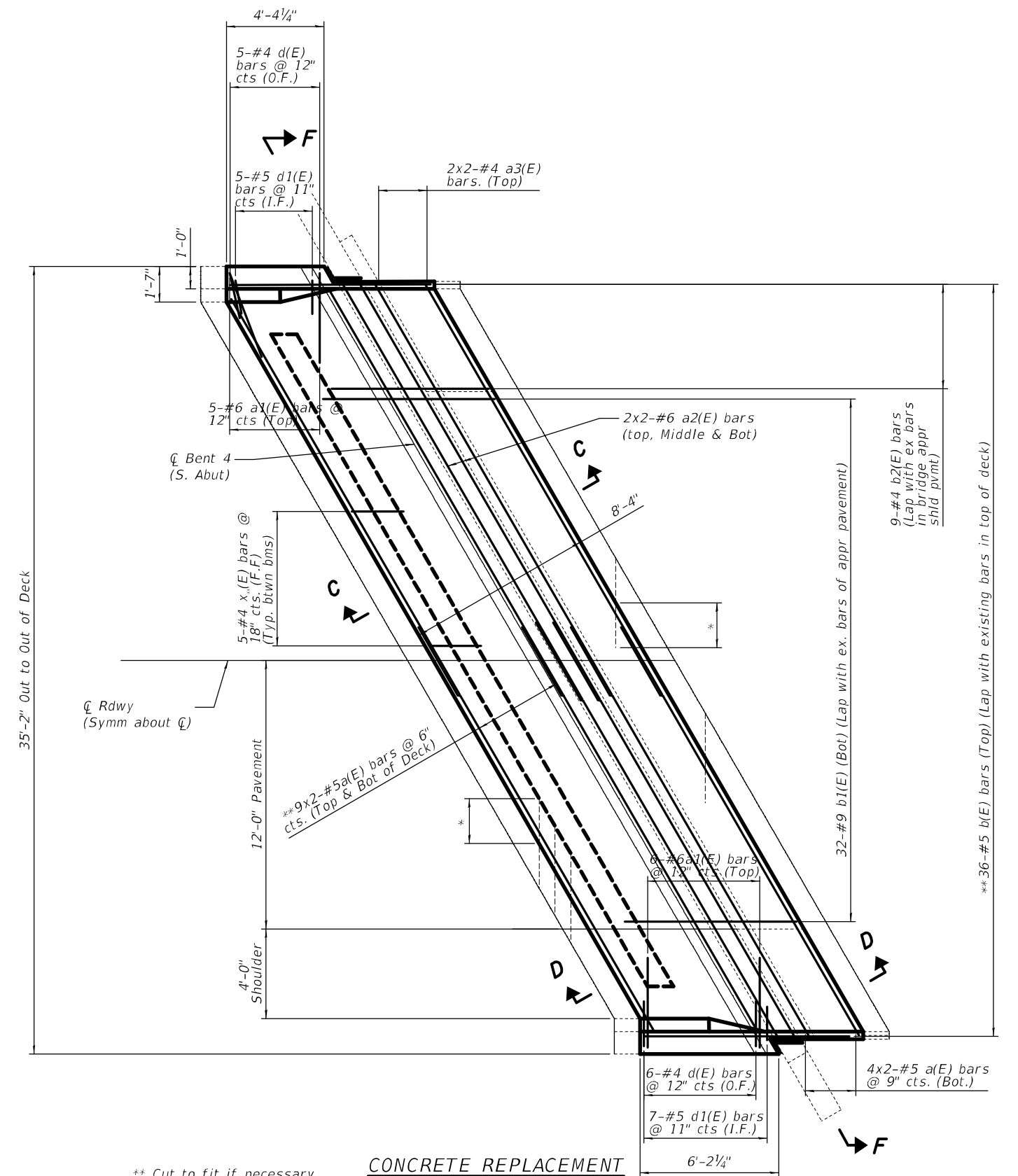
F.A.S. RTE. 791	SECTION 17BR-1	COUNTY MARION	TOTAL SHEETS 12	SHEET NO. 5
CONTRACT NO. 76P78			ILLINOIS FED. AID PROJECT	



CONCRETE REMOVAL
(S. Abut. Shown, N. Abut. Similar)

MIN. BAR LAP

- #4 bars = 2'-8"
- #5 bars = 3'-6"
- #6 bars = 4'-0"



CONCRETE REPLACEMENT

- ** Cut to fit if necessary
- (S. Abut. Shown, N. Abut. Similar)
- * Existing transverse bars extending from deck into removed area shall be cut allowing 2'-0" to extend into the removed area. In addition, these bars shall be cleaned, straighten, and incorporated into the new construction.

See sheet 6 of 9 for Sections A-A & B-B.

See sheet 7 of 9 for Bill of Material and Sections C-C & D-D.

See sheet 4 of 9 for Sections E-E & F-F.

MODEL: 0510078-76P78-003
 FILE NAME: p:\public\76p78\76p78.dwg
 PROJECT: I:\DOT\Documents\DOT_Offices\Dir\dir_81\Project\1087678\CADD\Structures\0510078.dwg

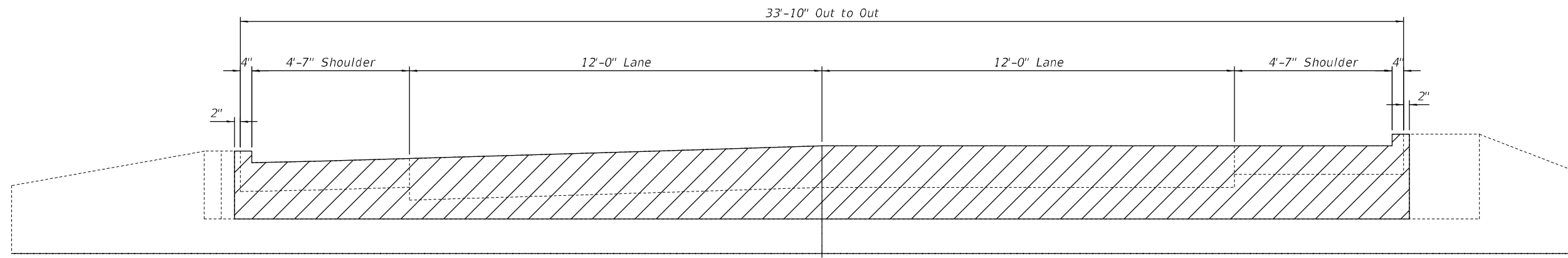
USER NAME = vlnsonay	DESIGNED - AYW	REVISED -
DRAWN - AYW	REVISIONS -	
PLOT SCALE = 6:0,0000 :"/ in.	CHECKED -	REVISIONS -
PLOT DATE = 4/4/2022	DATE -	REVISIONS -

**STATE OF ILLINOIS
DEPARTMENT OF TRANSPORTATION**

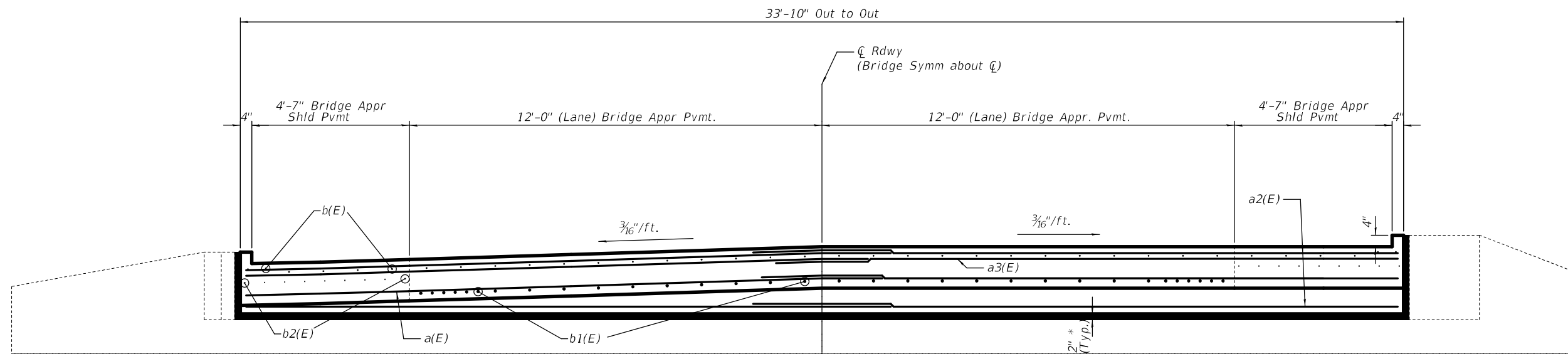
JOINT REMOVAL & REPLACEMENT (Abutments)
SN 061-0078

SCALE: SHEET 3 OF 9 SHEETS STA. TO STA.

F.A.S. RTE.	SECTION	COUNTY	TOTAL SHEETS	SHEET NO.
791	17BR-1	MARION	12	6
CONTRACT NO. 76P78				
ILLINOIS FED. AID PROJECT				



SECTION E-E



* Preformed Flexible Foam Expansion Joint Filler
(Cost included with Concrete Superstructure.)

SECTION F-F

MIN. BAR LAP

#4 bars = 2'-8"

#5 bars = 3'-6"

#6 bars = 4'-0"

MODEL: 0510078-76P78-004
FILE NAME: \\pub01\share\p78\76p78\Drawings\DOT\Office\Drawings\Project\087678\CADD\Drawings\Structures\0510078.dwg

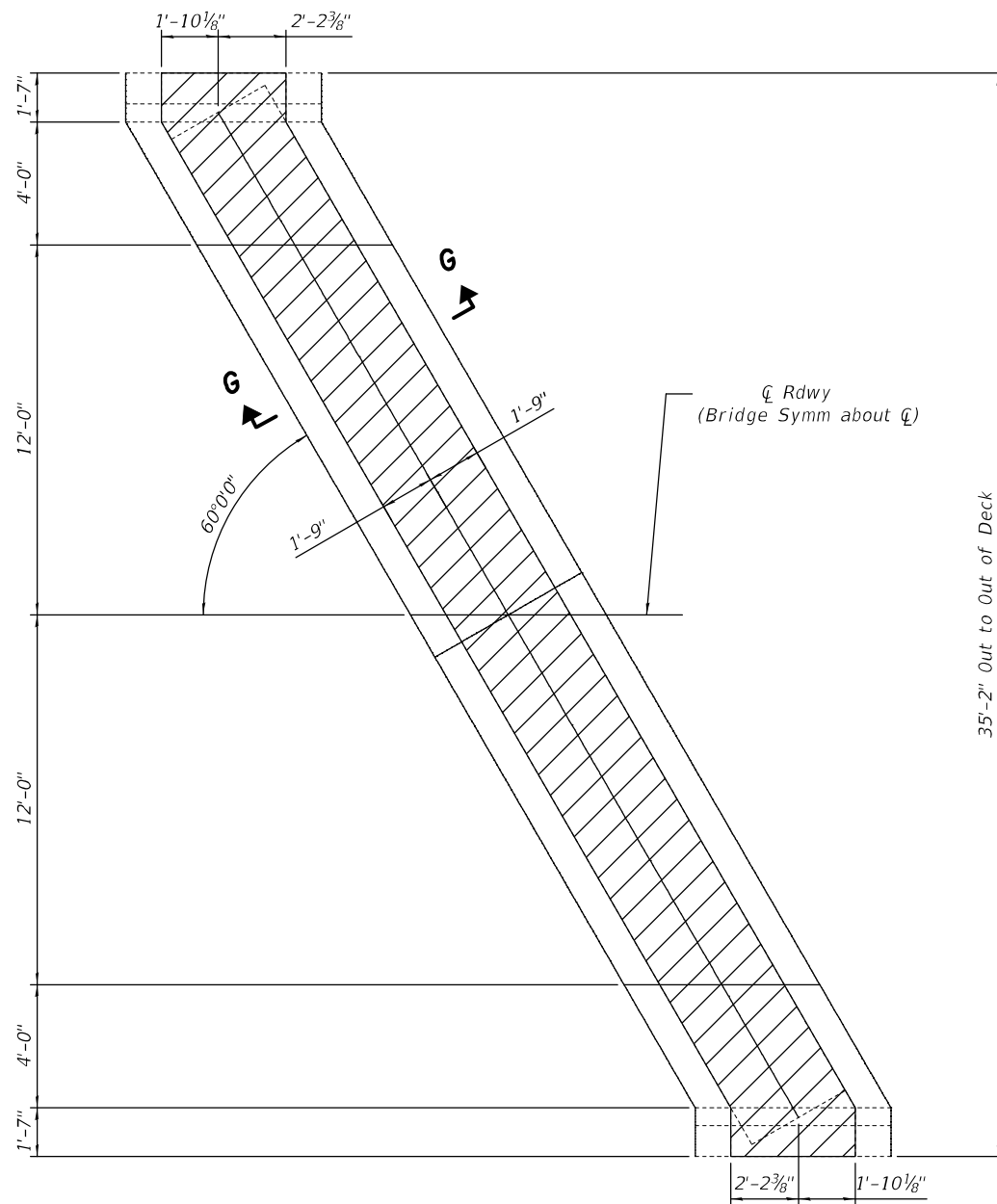
USER NAME = vlnsonay	DESIGNED - AYV	REVISED -
	DRAWN - AYV	REVISED -
PLOT SCALE = 3:6,0000' = 1" / in.	CHECKED -	REVISED -
PLOT DATE = 5/12/2022	DATE -	REVISED -

**STATE OF ILLINOIS
DEPARTMENT OF TRANSPORTATION**

**CROSS SECTION (Approach Removal & Replacement)
SN 061-0078**

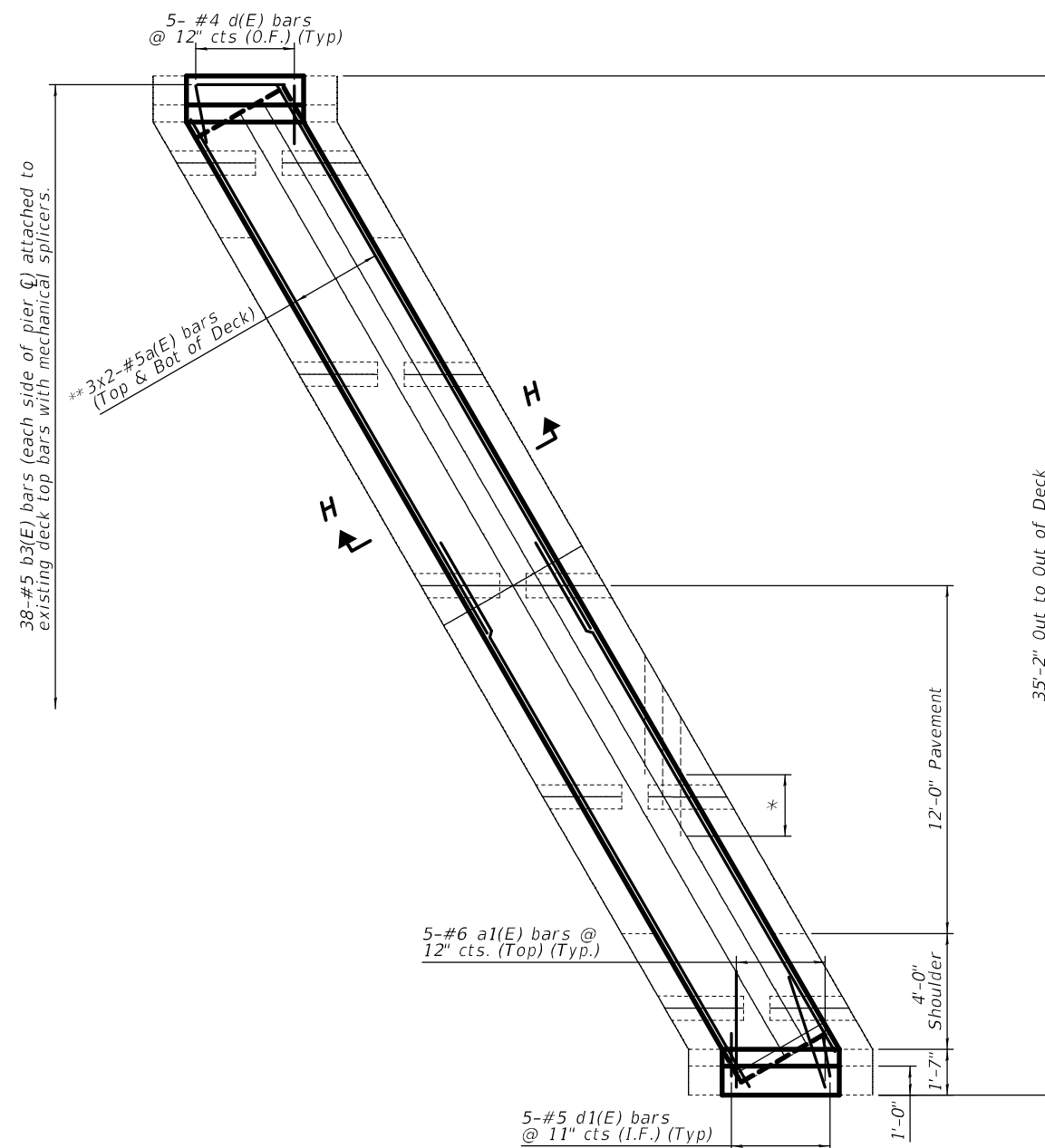
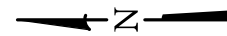
SCALE: SHEET 4 OF 9 SHEETS STA. TO STA.

F.A.S. RTE.	SECTION	COUNTY	TOTAL SHEETS	SHEET NO.
791	17BR-1	MARION	12	7
CONTRACT NO. 76P78				
ILLINOIS FED. AID PROJECT				



CONCRETE REMOVAL

 Concrete Removal



CONCRETE REPLACEMENT

Note:

See sheet 6 of 9 for Section G-G & sheet 7 of 9 for Bill of Material & Section H-H

* Existing transverse bars extending from deck into removed area shall be cut allowing 2'-0" to extend into the removed area. In addition, these bars shall be cleaned, straighten, and incorporated into the new construction.

** Cut to fit if necessary

MODEL: 0510078-76P78-005
FILE NAME: p:\public\paw\paw.dwg.com\FW\DOT\Documents\DOT_Offices\Dir\dr. B\Project\087678\CADD\BasisStructures\0510078.dwg

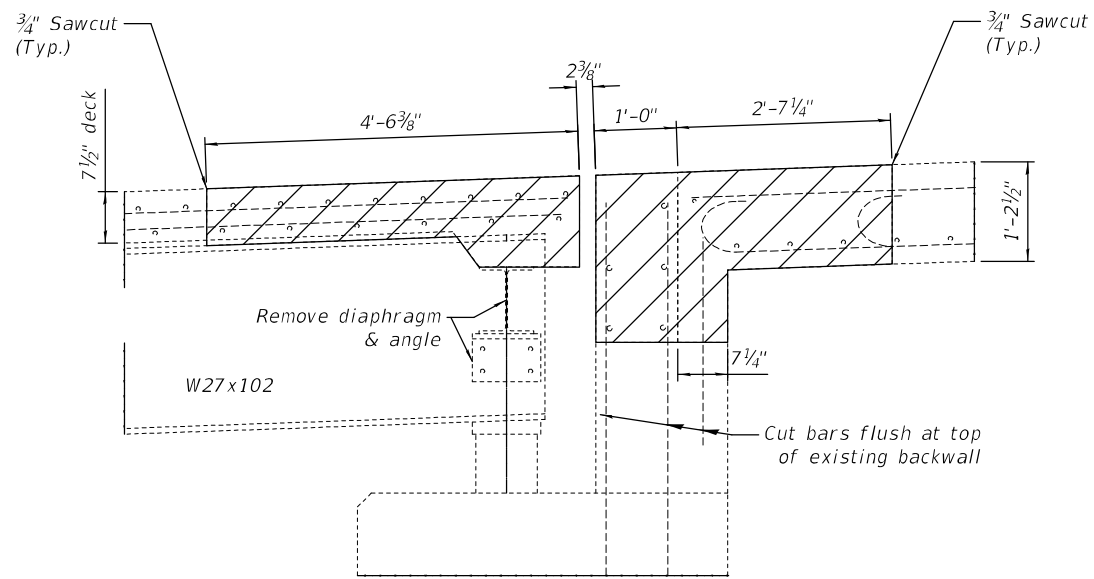
USER NAME = vlnsonay	DESIGNED - AYV	REVISED -
	DRAWN - AYV	REVISED -
PLOT SCALE = 6:0,0000 '"/>		

**STATE OF ILLINOIS
DEPARTMENT OF TRANSPORTATION**

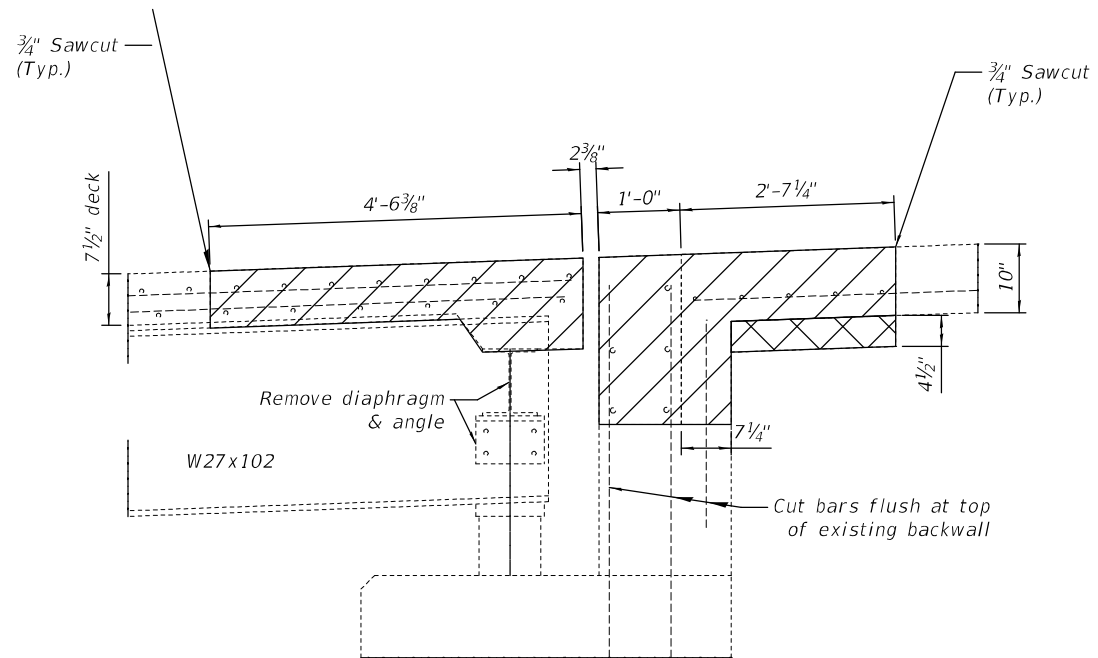
**JOINT REMOVAL & REPLACEMENT (PIERS)
SN 061-0078**

F.A.S. RTE.	SECTION	COUNTY	TOTAL SHEETS	SHEET NO.
791	17BR-1	MARION	12	8
CONTRACT NO. 76P78				
ILLINOIS FED. AID PROJECT				

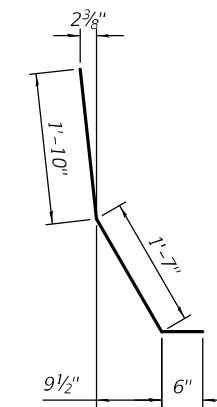
SCALE: SHEET 5 OF 9 SHEETS STA. TO STA.



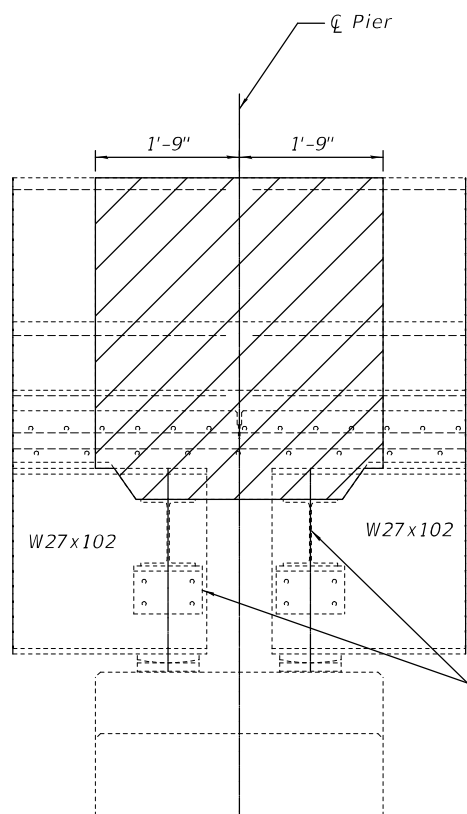
SECTION A-A



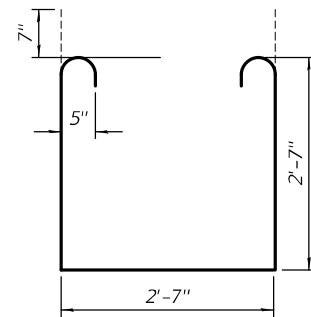
SECTION B-B



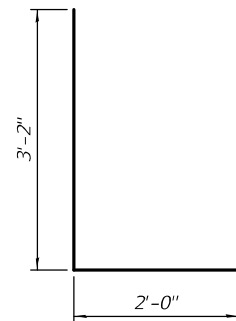
BAR d1(E)



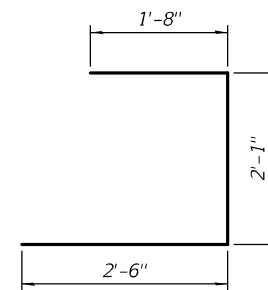
SECTION G-G



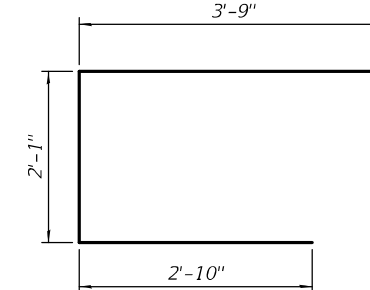
BAR s(E)



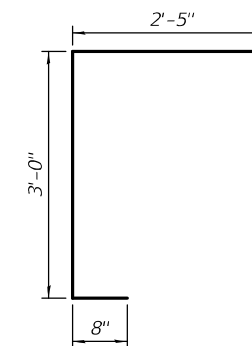
BAR d(E)



BAR u1(E)



BAR u(E)



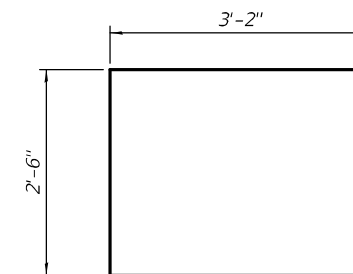
BAR u2(E)



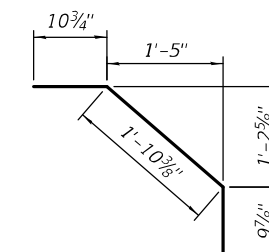
Concrete Removal



Minor excavation at shoulder included with cost of Concrete Removal.



BAR s1(E)



BAR x(E)

MODEL: 0510078-76P78-006
FILE NAME: p:\pub\sc\p78\p78.dwg
PROJECT: 087678\CADD\Structures\0510078.dwg

USER NAME = vlnsonay	DESIGNED - AYV	REVISED -
DRAWN - AYV	REVISIONS -	
PLOT SCALE = 2:4,0000 "/>		

**STATE OF ILLINOIS
DEPARTMENT OF TRANSPORTATION**

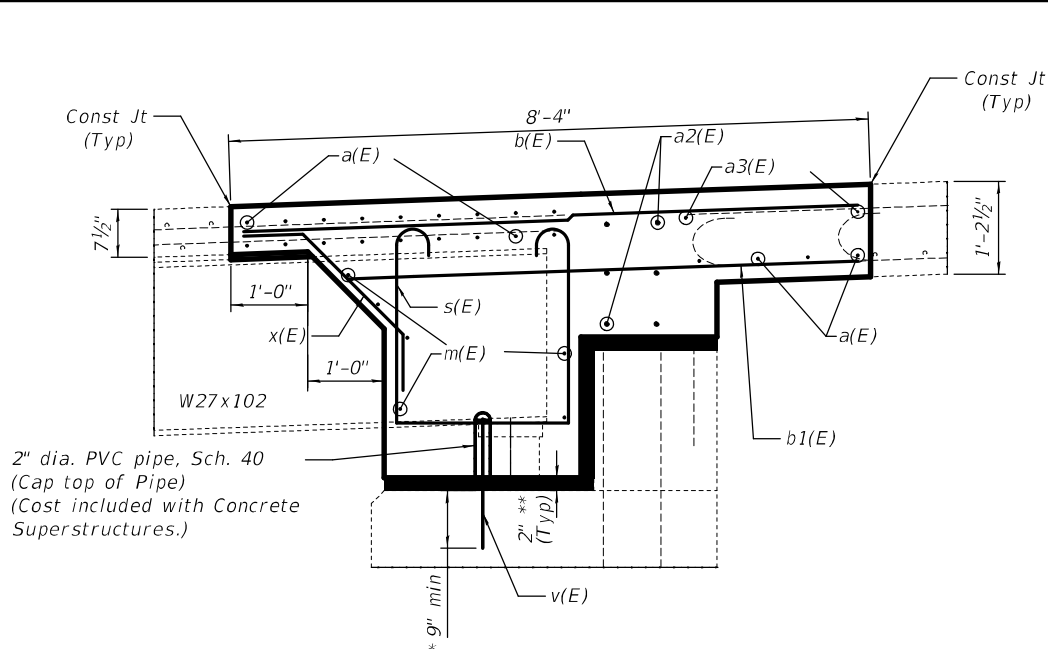
**EXISTING JOINT DETAILS
SN 061-0078**

SCALE: SHEET 6 OF 9 SHEETS STA. TO STA.

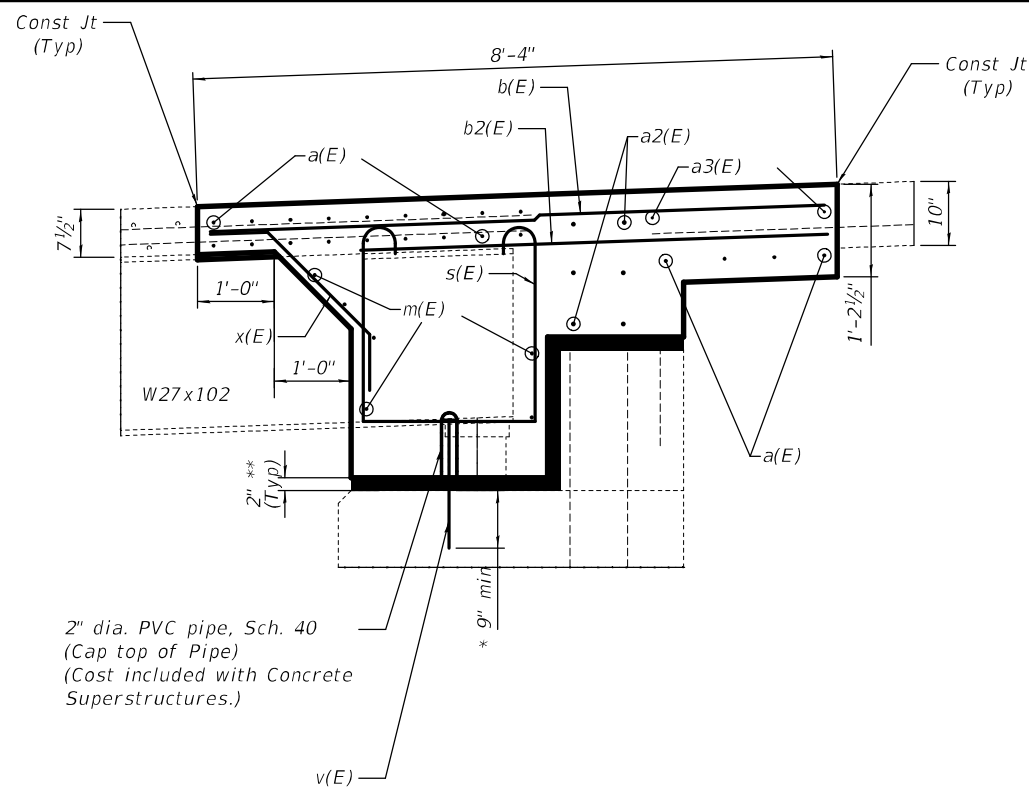
F.A.S. RTE.	SECTION	COUNTY	TOTAL SHEETS	SHEET NO.
791	17BR-1	MARION	12	9
CONTRACT NO. 76P78				
ILLINOIS FED. AID PROJECT				

BILL OF MATERIAL

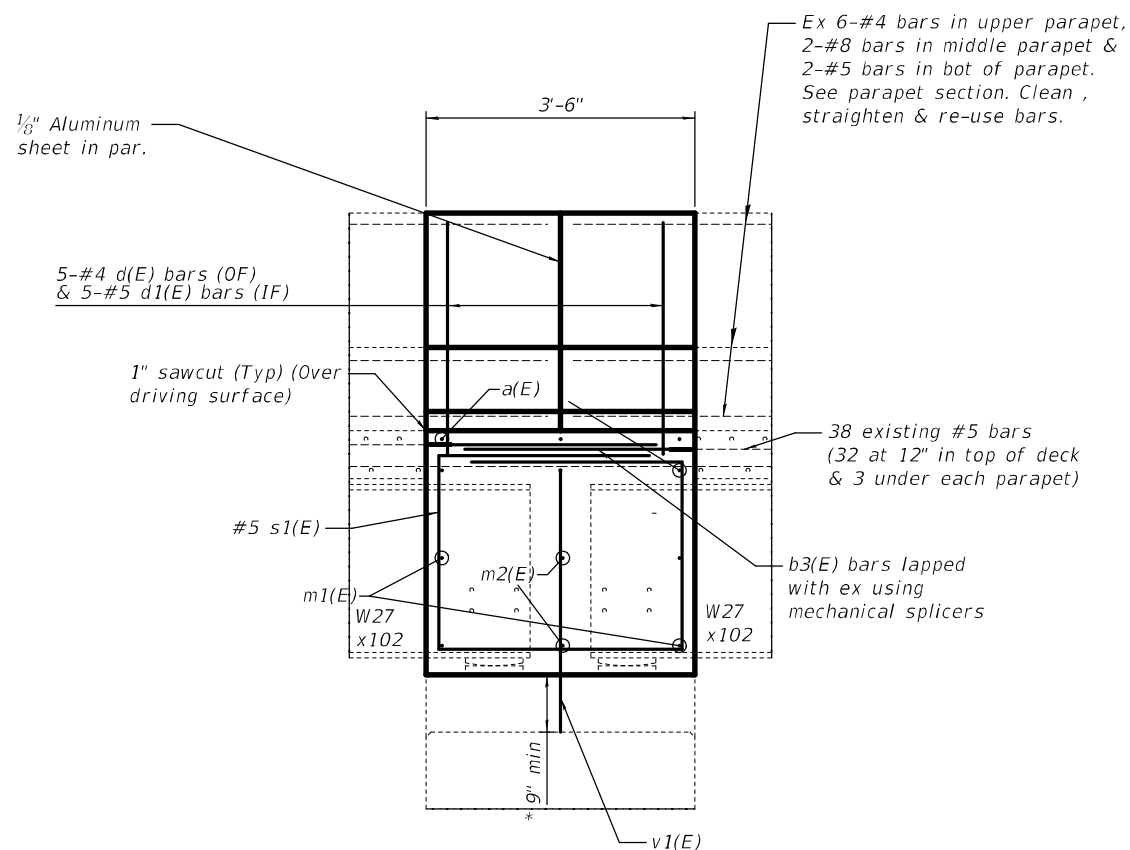
Bar	No.	Size	Length	Shape
a(E)	100	#5	21'-1"	▬
a1(E)	42	#6	4'-0"	▬
a2(E)	24	#6	21'-4"	▬
a3(E)	8	#4	20'-8"	▬
b(E)	72	#5	9'-2"	▬
b1(E)	64	#9	7'-8"	▬
b2(E)	36	#4	7'-0"	▬
b3(E)	152	#5	3'-0"	▬
d(E)	42	#4	5'-2"	└
d1(E)	44	#5	3'-11"	└
m(E)	48	#6	7'-11"	▬
m1(E)	32	#5	7'-11"	▬
m2(E)	8	#5	20'-5"	▬
s(E)	72	#5	8'-11"	▬
s1(E)	88	#5	8'-10"	▬
u(E)	6	#6	8'-8"	└
u1(E)	6	#6	6'-3"	└
u2(E)	12	#6	6'-1"	└
v(E)	88	#8	1'-8"	▬
v1(E)	52	#5	3'-5"	▬
x(E)	40	#4	3'-7"	└
Concrete Removal			Cu. Yd.	38.3
Concrete Superstructure			Cu. Yd.	83.4
Reinforcement Bars, Epoxy Coated			Pound	10060



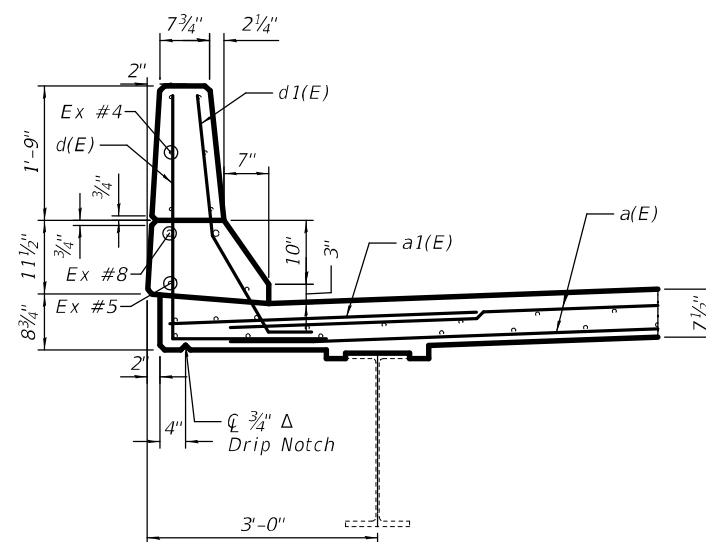
SECTION C-C



SECTION D-D



SECTION H-H



PARAPET SECTION

* Epoxy grout v(E) or v1(E) bars in 9" min. holes according to Article 584 of the Standard Specifications. (Cost included with Concrete Superstructures.)

** Preformed Flexible Foam Expansion Joint Filler. (Cost included with Concrete Superstructure.)

MODEL: 0510078-78P78-107
FILE NAME: p:\pub\scs\pdx\pdx.com\p\1\1\DOT\Documents\DOT_Offices\Dir\dr. B\Project\087678\CADD\pdx\Structures\0510078.dgn

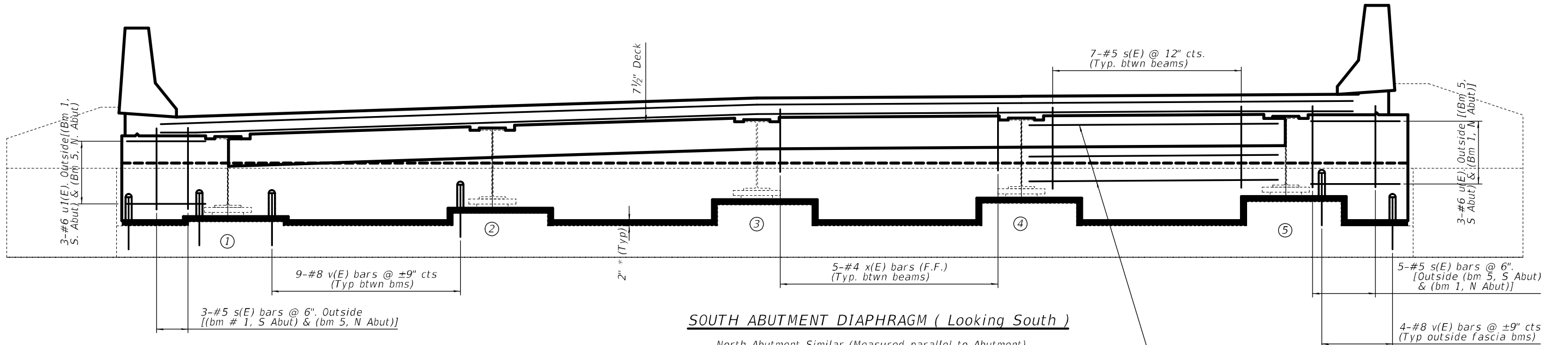
USER NAME = vlnsonay	DESIGNED - AYW	REVISED -
DRAWN - AYW	REVISED -	
PLOT SCALE = 2:6,0000 "/>		

**STATE OF ILLINOIS
DEPARTMENT OF TRANSPORTATION**

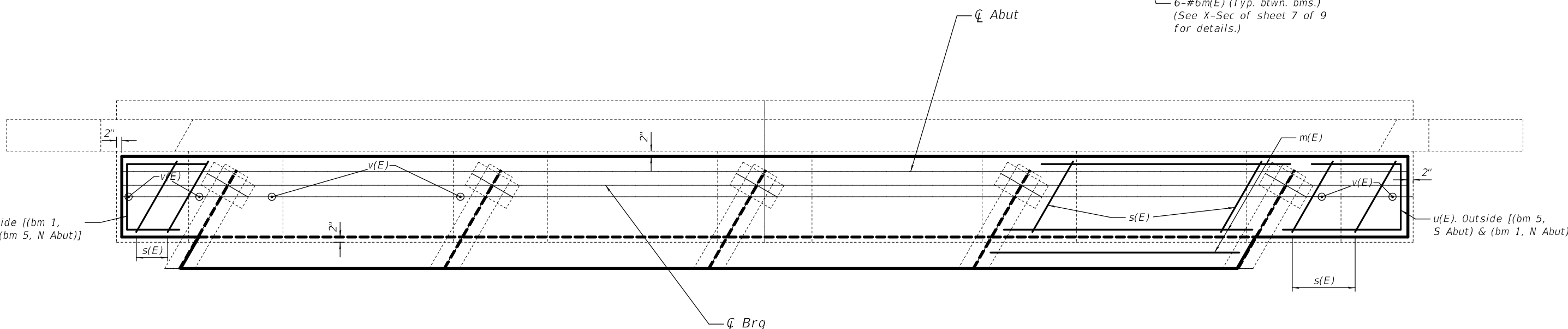
**PROPOSED JOINT DETAILS
SN 061-0078**

SCALE: SHEET 7 OF 9 SHEETS STA. TO STA.

F.A.S. RTE.	SECTION	COUNTY	TOTAL SHEETS	SHEET NO.
791	17BR-1	MARION	12	10
CONTRACT NO. 76P78				
ILLINOIS FED. AID PROJECT				

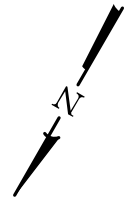


SOUTH ABUTMENT DIAPHRAGM (Looking South)
North Abutment Similar (Measured parallel to Abutment)



PLAN VIEW THRU DIAPHRAGM
(S. Abutment shown, N. Abutment similar)

* Preformed Flexible Foam Expansion Joint Filler.
(Cost included with Concrete Superstructure)



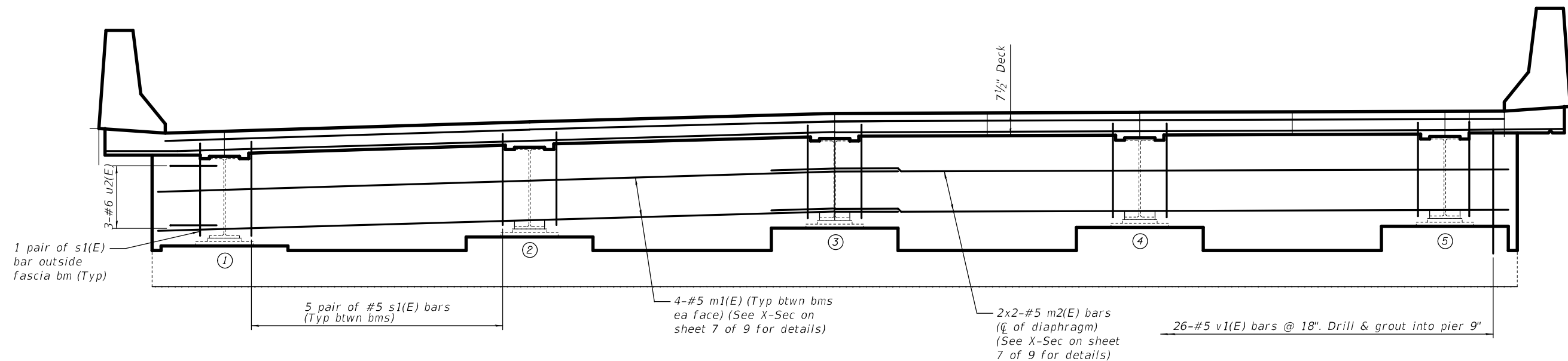
MODEL: 03/10/17 7:07:06
 FILE NAME: p:\public\enr\enr.com\FW\DOT\Documents\DOT Offices\Director: B\Project\087678\CADD\BasisStructures\0610078.dwg

USER NAME = vlnsonay	DESIGNED - AYV	REVISED -
DRAWN - AYV	REVISED -	
PLOT SCALE = 3/4,0000 "/> <td>CHECKED -</td> <td>REVISED -</td>	CHECKED -	REVISED -
PLOT DATE = 4/25/2022	DATE -	REVISED -

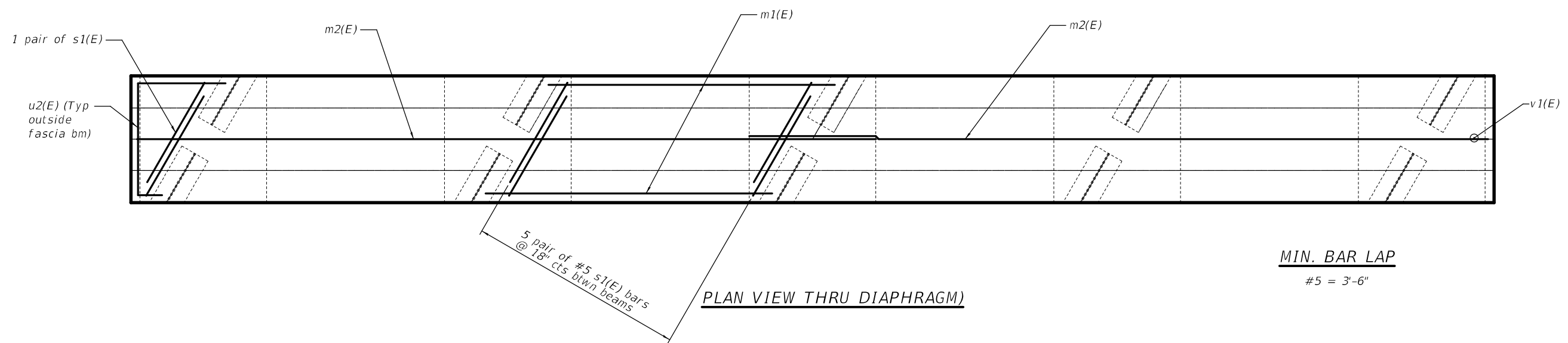
STATE OF ILLINOIS
DEPARTMENT OF TRANSPORTATION

DIAPHRAGM AT ABUTMENT			
SN 061-0078			
SCALE:	SHEET 8	OF 9	SHEETS
	STA.		TO STA.

F.A.S. RTE.	SECTION	COUNTY	TOTAL SHEETS	SHEET NO.
791	17BR-1	MARION	12	11
CONTRACT NO. 76P78				
		ILLINOIS FED. AID PROJECT		



PIERS (BENTS) DIAPHRAGM (Looking South)



PLAN VIEW THRU DIAPHRAGM

MIN. BAR LAP
#5 = 3'-6"

MODEL: 0510078-78P78-009
 FILE NAME: p:\public\78p78\78p78.dwg
 PROJECT: 087878\CADD\Structures\0510078.dwg

USER NAME = vlnsonay	DESIGNED - AYV	REVISED -
DRAWN - AYV	REVISIONS -	
PLOT SCALE = 3:2,0000' = 1" / in.	CHECKED -	REVISIONS -
PLOT DATE = 4/4/2022	DATE -	REVISIONS -

**STATE OF ILLINOIS
DEPARTMENT OF TRANSPORTATION**

**DIAPHRAGMS AT PIERS
SN 061-0078**

SCALE: SHEET 9 OF 9 SHEETS STA. TO STA.

F.A.S. RTE.	SECTION	COUNTY	TOTAL SHEETS	SHEET NO.
791	17BR-1	MARION	12	12
CONTRACT NO. 76P78				
ILLINOIS FED. AID PROJECT				