

STATE OF ILLINOIS
DEPARTMENT OF TRANSPORTATION

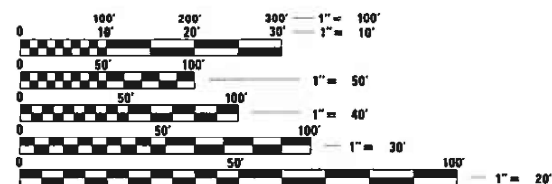
**PROPOSED
HIGHWAY PLANS**

**VARIOUS ROUTES
DIST 8 WEED SPRAYING 2022-1
WEED SPRAYING
VARIOUS COUNTIES**

C-98-049-22

INDEX OF SHEETS

1. COVER SHEET, INDEX OF SHEETS, MAP
2. HIGHWAY STANDARDS, SPRAY SCHEDULE, AND COMMITMENTS
3. SUMMARY OF QUANTITIES
- 4.-7. OMISSIONS/NO SPRAY SITES

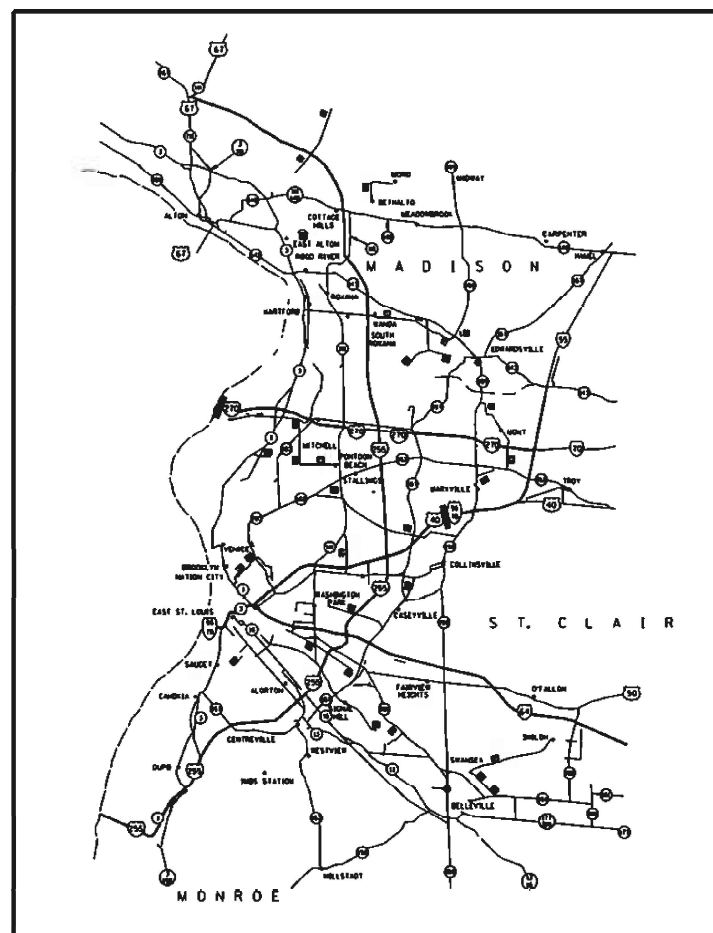


FULL SIZE PLANS HAVE BEEN PREPARED USING STANDARD ENGINEERING SCALES. REDUCED SIZED PLANS WILL NOT CONFORM TO STANDARD SCALES. IN MAKING MEASUREMENTS ON REDUCED PLANS, THE ABOVE SCALES MAY BE USED.

J.U.L.I.E.
JOINT UTILITY LOCATION INFORMATION FOR EXCAVATION
1-800-892-0123
OR 811

**PROJECT ENGINEER: CHERYL KEPLAR
PROJECT MANAGER: TONI MANN**

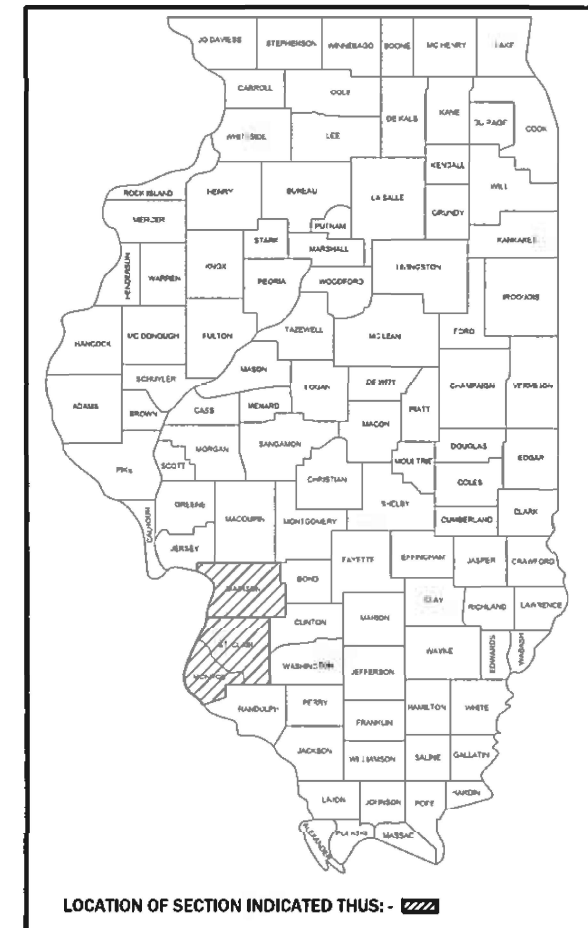
CONTRACT NO. 76P62



F.A. RTE.	SECTION	COUNTY	TOTAL SHEETS	SHEET NO.
1	1	ILLINOIS	7	1
ILLINOIS			CONTRACT NO. 76P62	

* VARIOUS
** DIST 8 WEED SPRAYING 2022-1

D-98-020-22



LOCATION OF SECTION INDICATED THIS: - [shaded area]

STATE OF ILLINOIS
DEPARTMENT OF TRANSPORTATION

SUBMITTED March 11, 2022
Stephen Traoria
REGIONAL ENGINEER

May 13, 2022 [Signature]
ENGINEER OF DESIGN AND ENVIRONMENT

May 13, 2022 [Signature]
DIRECTOR OF HIGHWAYS PROJECT IMPLEMENTATION

**PRINTED BY THE AUTHORITY
OF THE STATE OF ILLINOIS**

MODEL: Default
 FILE: \\mfrs-pw-bentley.com\PWDOT\Documents\DOT_Offices\District_8\Projects\DIST 8 WEED SPRAYING 2022-1\CADD\data\CADsheets\DIST 8 WEED SPRAYING 2022-1.dgn

STANDARDS

- 701001-02
- 701006-05
- 701101-05
- 701106-02
- 701301-04
- 701426-09
- 701901-08
- 000001-08
- 001006

COMMITMENTS
NONE

DISTRICT 8 WEED SPRAYING 2022-1			
COUNTY	ROUTE	MILES	ACRES
MADISON	I-55/70	30	90
	I-55	20	60
	I-270	22	66
	I-255	21	63
	IL 255	52	156
	IL 3	20	60
ST. CLAIR	I-64	26	78
	I-255	35	105
	IL 3	10	30
	IL 15	10	30
MONROE	I-255	20	60
	IL 3	10	30
MISCELLANEOUS			22
TOTAL		276	850

MILEAGE AND ACREAGE SHOWN IS ESTIMATED. SPECIFIC LOCATIONS TO BE DETERMINED BY THE RESIDENT ENGINEER ONCE JOHNSON GRASS IS VISIBLE.

REV. - MS

- VARIOUS
- DIST 8 WEED SPRAYING 2022-1

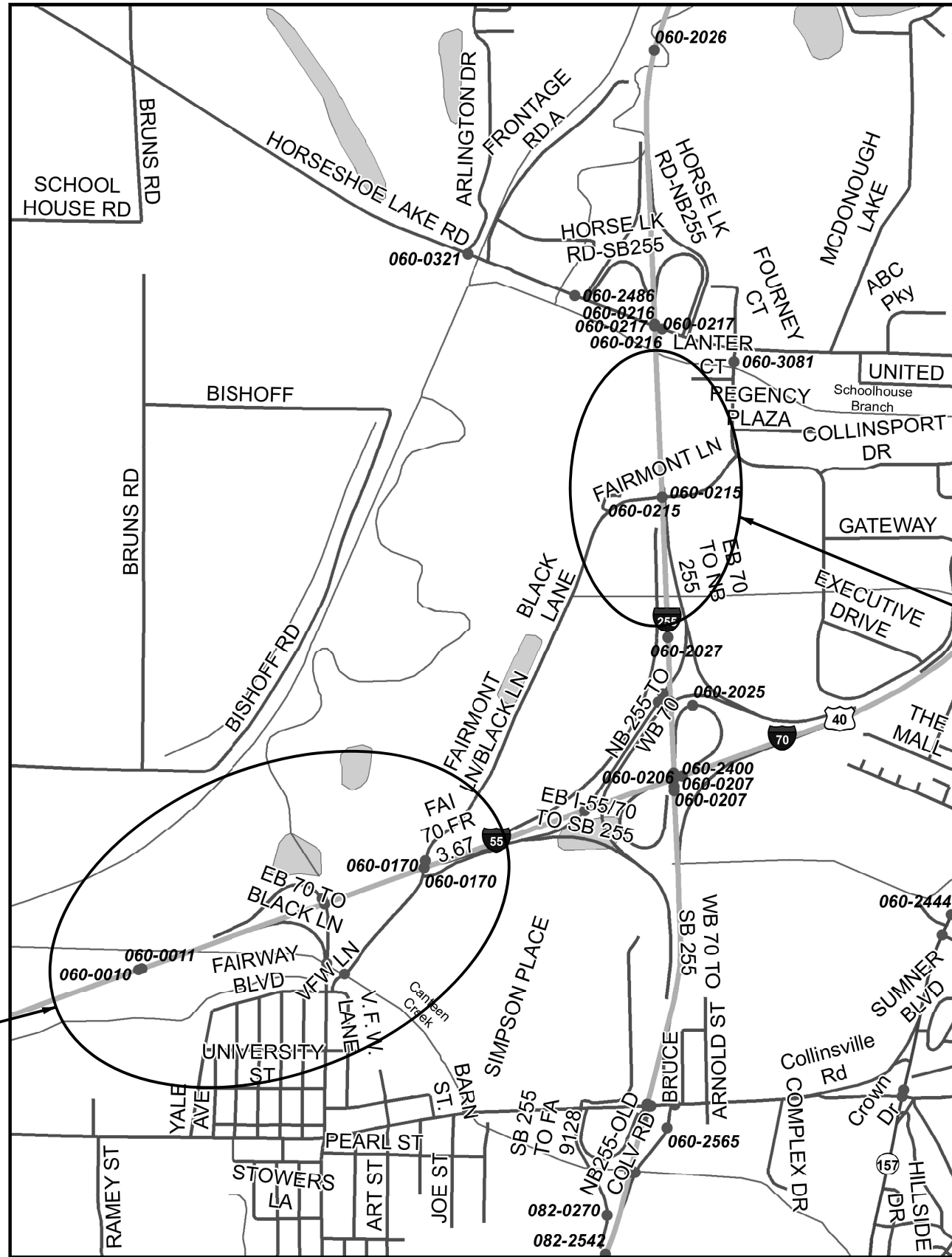
USER NAME = lewiska	DESIGNED -	REVISED -	STATE OF ILLINOIS DEPARTMENT OF TRANSPORTATION	HIGHWAY STANDARDS, SPRAY SCHEDULE, AND COMMITMENTS	F.A. RTE.	SECTION	COUNTY	TOTAL SHEETS	SHEET NO.	
PLOT SCALE = 100.0000' / in.	DRAWN -	REVISED -			*	**	VARIES	7	2	
PLOT DATE = 3/15/2022	CHECKED -	REVISED -			CONTRACT NO. 76P62					
	DATE -	REVISED -			SCALE:	SHEET OF SHEETS	STA. TO STA.	ILLINOIS FED. AID PROJECT		

MODEL: Default
 FILE NAME: p:\ultra-cw-bead-ay.com\PIV\DOT\Documents\DOT_offices\Dir\dr. 8\Project\087682\CADD\DATA\CAD\Sheet\087682-sh-502.dgn

CODE NO.	ITEM	UNIT	TOTAL QUANTITY	CONSTR. CODE	
				100% STATE	URBAN
				NONE	
				0031	
67100100	MOBILIZATION	L SUM	1		1
K0012950	HERBICIDE SPRAYING	ACRE	850		850

- VARIOUS
- DIST 8 WEED SPRAYING 2022-1

USER NAME = leviska	DESIGNED -	REVISED -	STATE OF ILLINOIS DEPARTMENT OF TRANSPORTATION	SUMMARY OF QUANTITIES				F.A. RTE.	SECTION	COUNTY	TOTAL SHEETS	SHEET NO.
PLOT SCALE = 100,0000 ' / in.	DRAWN -	REVISED -						*	**	VARIES	7	3
PLOT DATE = 3/15/2022	CHECKED -	REVISED -		SCALE: SHEET OF SHEETS STA. TO STA.				CONTRACT NO. 76P62				
	DATE -	REVISED -						ILLINOIS FED. AID PROJECT				



DO NOT SPRAY

DO NOT SPRAY

MADISON COUNTY
LEVEE LAKE
SECTION 36, T3N-R9W

• VARIOUS
** DIST 8 WEED SPRAYING 2022-1

MODEL: Default
 FILE: MADIS_20220315_100000.ctb
 PROJECT: D:\Projects\087682\CADD\DATA\CADD\Sheet\087682.ctb.dwg

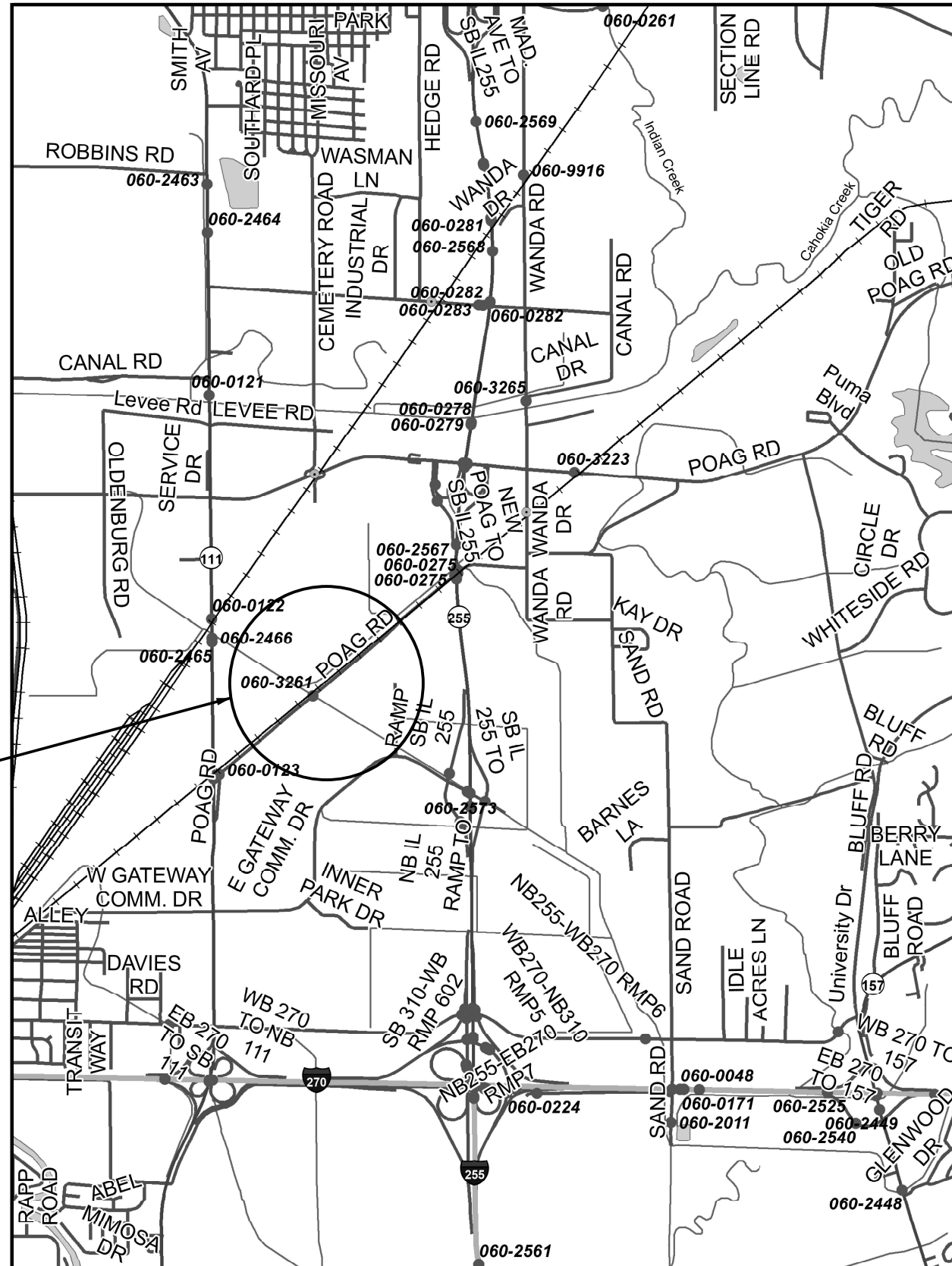
USER NAME = leviska	DESIGNED -	REVISED -
	DRAWN -	REVISED -
PLOT SCALE = 100,0000' / in.	CHECKED -	REVISED -
PLOT DATE = 3/15/2022	DATE -	REVISED -

**STATE OF ILLINOIS
DEPARTMENT OF TRANSPORTATION**

OMISSIONS NAMEOKI AND GRANITE TOWNSHIP

SCALE: SHEET OF SHEETS STA. TO STA.

F.A. RTE.	SECTION	COUNTY	TOTAL SHEETS	SHEET NO.
-	**	VARIES	7	4
CONTRACT NO. 76P62				
ILLINOIS FED. AID PROJECT				



DO NOT SPRAY

MADISON COUNTY
POAG R.R. PRAIRIE
SECTION 24, T4N-R9W

- VARIOUS
- DIST 8 WEED SPRAYING 2022-1

MODEL: Default
 FILE: MADIS_20220315_1100.ctb
 PROJECT: I:\DOT\Documents\DOT Office\Director: E:\Project\087682\CADD\DATA\CADD\Sheet\087682.ctb\ba.dwg

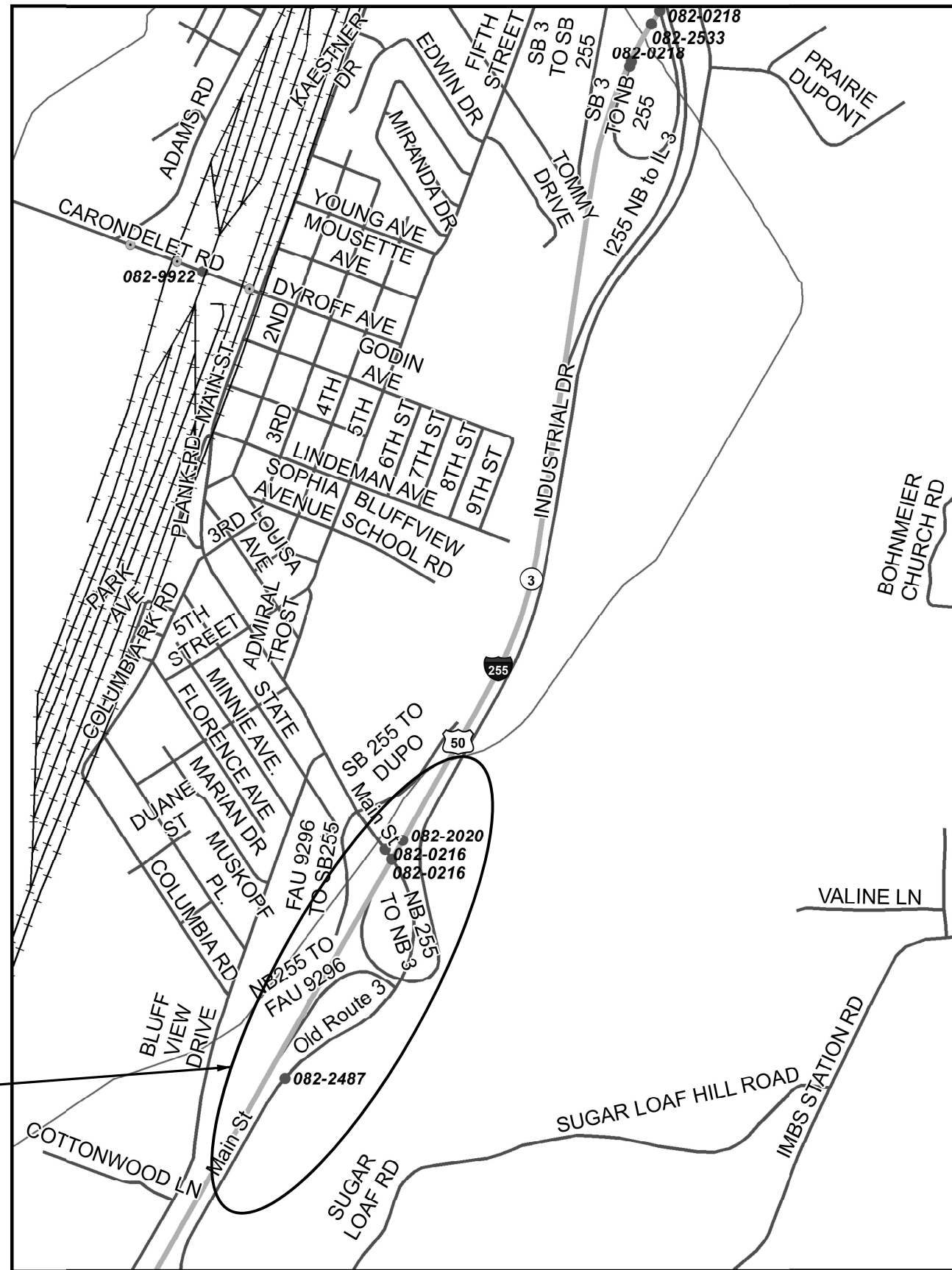
USER NAME = leviska	DESIGNED -	REVISED -
	DRAWN -	REVISED -
PLOT SCALE = 100,0000' / in.	CHECKED -	REVISED -
PLOT DATE = 3/15/2022	DATE -	REVISED -

STATE OF ILLINOIS
DEPARTMENT OF TRANSPORTATION

OMISSONS CHOUTEAU &
GRANITE CITY TOWNSHIP

SCALE: SHEET OF SHEETS STA. TO STA.

F.A. RTE.	SECTION	COUNTY	TOTAL SHEETS	SHEET NO.
-	**	VARIES	7	5
CONTRACT NO. 76P62				
ILLINOIS FED. AID PROJECT				



ST. CLAIR COUNTY
 DUPO PRAIRIE/SUGAR LOAF PRAIRIE
 SECTION 27 & 28, T1N-R10W

- VARIOUS
- DIST 8 WEED SPRAYING 2022-1

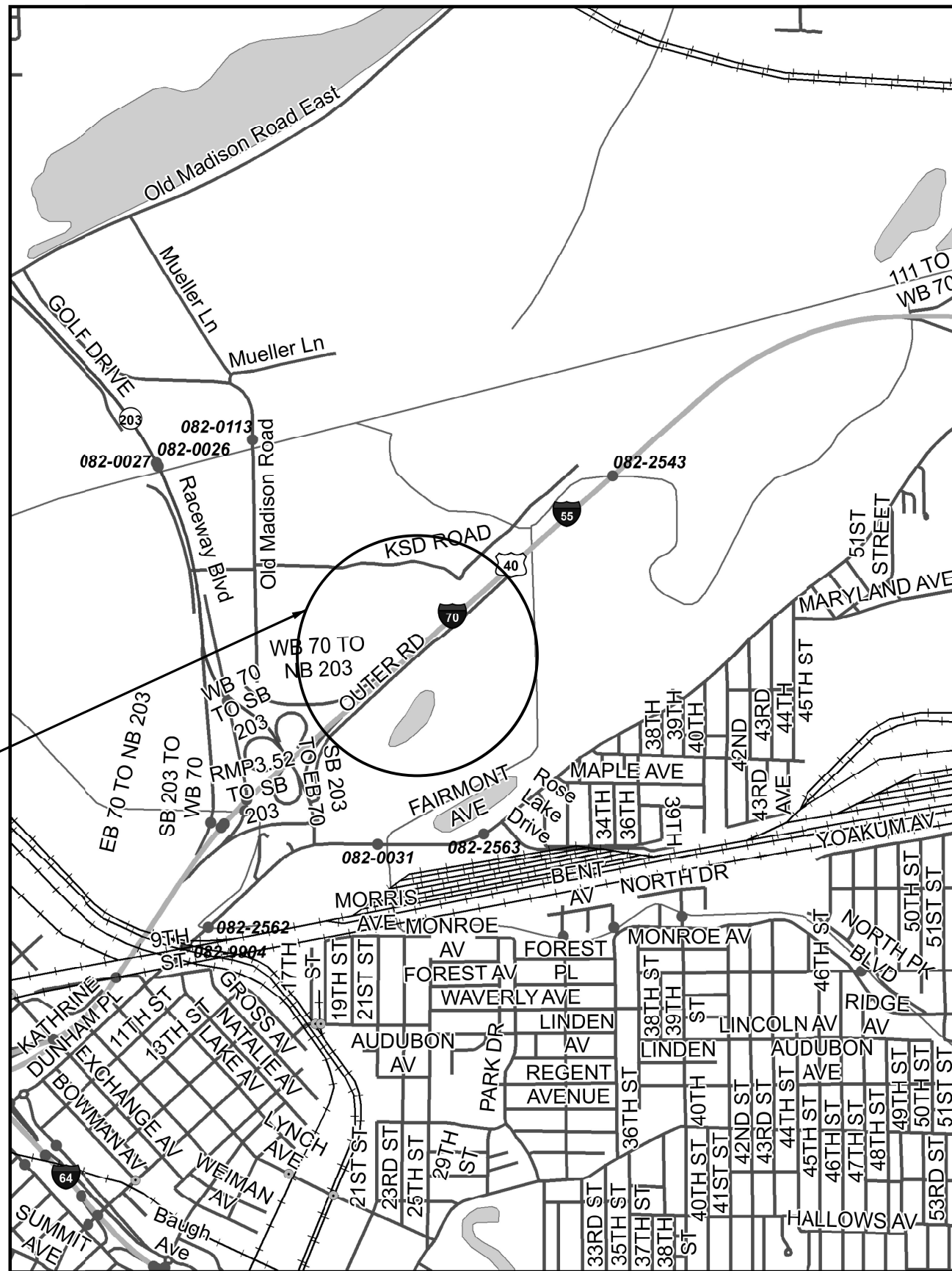
MODEL: P:\default
 FILE: NAME: p:\build\new\beadefy.com\FW\DOT\Documents\DOT_Offices\Dir\dr. B\Project\0876862\CADD\data\CAD\sheet\0876862-sh-28a.dwg

USER NAME = leviska	DESIGNED -	REVISED -
	DRAWN -	REVISED -
PLOT SCALE = 100,0000' / in.	CHECKED -	REVISED -
PLOT DATE = 3/15/2022	DATE -	REVISED -

**STATE OF ILLINOIS
 DEPARTMENT OF TRANSPORTATION**

OMISSIONS	
SUGAR LOAF TOWNSHIP	
SCALE:	SHEET OF SHEETS STA. TO STA.

F.A. RTE.	SECTION	COUNTY	TOTAL SHEETS	SHEET NO.
**	**	VARIES	7	6
CONTRACT NO. 76P62				
ILLINOIS FED. AID PROJECT				



DO NOT SPRAY

ST. CLAIR COUNTY
FAIRMONT CITY SITE
T1N-R9W

- VARIOUS
- DIST 8 WEED SPRAYING 2022-1

MODEL: Default
 FILE: 3/15/2022 10:00:00 AM
 PROJECT: 082-0004
 DRAWING: 082-0004-01
 SHEET: 082-0004-01-01

USER NAME = leviska	DESIGNED -	REVISED -
	DRAWN -	REVISED -
PLOT SCALE = 100,0000' / in.	CHECKED -	REVISED -
PLOT DATE = 3/15/2022	DATE -	REVISED -

**STATE OF ILLINOIS
DEPARTMENT OF TRANSPORTATION**

**OMISSIONS
FAIRMONT CITY SITE**

SCALE: SHEET OF SHEETS STA. TO STA.

F.A. RTE.	SECTION	COUNTY	TOTAL SHEETS	SHEET NO.
-	**	VARIES	7	7
CONTRACT NO. 76P62				
ILLINOIS FED. AID PROJECT				