

STATE OF ILLINOIS
DEPARTMENT OF TRANSPORTATION
DIVISION OF HIGHWAYS

**PROPOSED
HIGHWAY PLANS**

F.A.I. ROUTE 70 (I-70)
SECTION D7 SHOULDER REPAIRS 2022-1
SHOULDER REPAIR
FAYETTE COUNTY

C-97-055-22

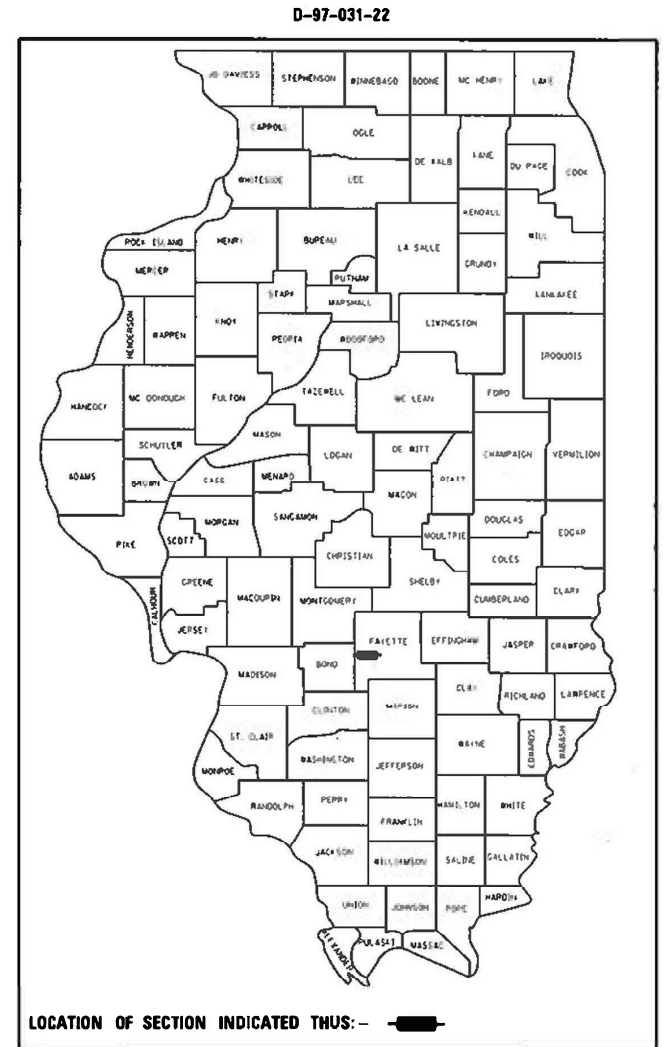
F.A.I. RTE.	SECTION	COUNTY	TOTAL SHEETS	SHEET NO.
70	D7 SHOULDER REPAIRS 2022-1	FAYETTE	16	1
		ILLINOIS	CONTRACT NO. 74B14	

FOR INDEX OF SHEETS, SEE SHEET NO. 2

STATION EQUATIONS

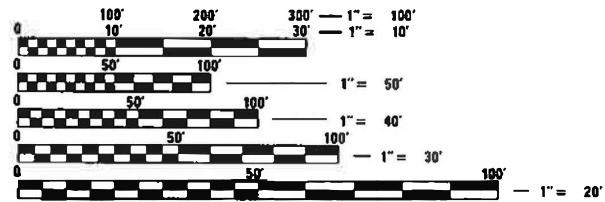
1610 + 33.67 BK = 90 + 55.19 AH
399 + 14.06 BK = 398 + 86.83 AH
519 + 40.32 BK = 519 + 12.05 AH

ADT = 25,000 (2021)



FAI ROUTE 70
D7 SHOULDER REPAIRS 2022-1
PROJECT BEGINS
STA 1505 + 55.00

FAI ROUTE 70
D7 SHOULDER REPAIRS 2022-1
PROJECT ENDS
WB STA 521 + 43
EB STA 522 + 93

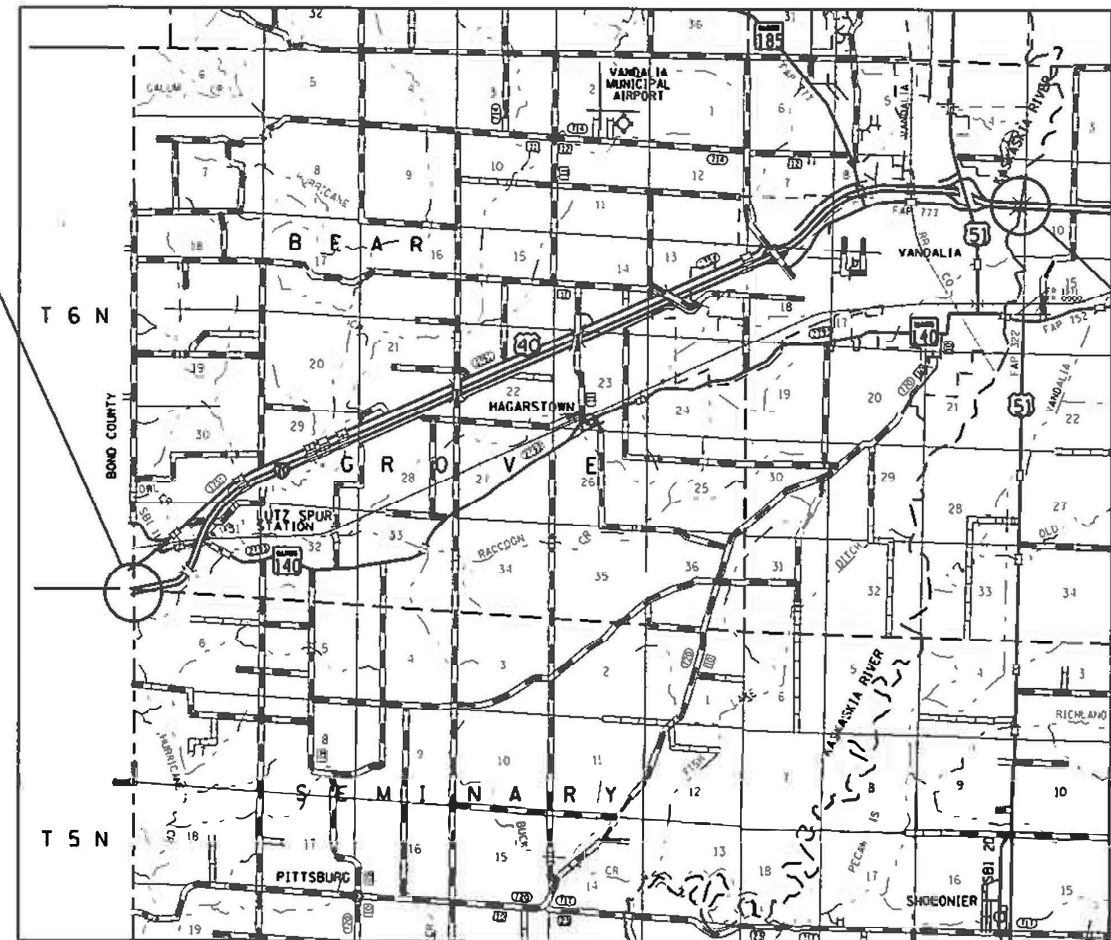


FULL SIZE PLANS HAVE BEEN PREPARED USING STANDARD ENGINEERING SCALES. REDUCED SIZED PLANS WILL NOT CONFORM TO STANDARD SCALES. IN MAKING MEASUREMENTS ON REDUCED PLANS, THE ABOVE SCALES MAY BE USED.

J.U.L.I.E.
JOINT UTILITY LOCATION INFORMATION FOR EXCAVATION
1-800-892-0123
OR 811

PROJECT ENGINEER: MARK DAUGHERTY
PROJECT MANAGER: BRANDON HEMMEN

CONTRACT NO. 74B14



GROSS LENGTH = 55229 FT = 10.46 MILES
NET LENGTH = 49349 FT = 9.35 MILES

STATE OF ILLINOIS
DEPARTMENT OF TRANSPORTATION
DIVISION OF HIGHWAYS

SUBMITTED April 4 20 22
Jeffrey P. Mendenhall
DEPUTY DIRECTOR OF HIGHWAYS, REGION ENGINEER
May 13, 2022
Scott A. Etkin
ENGINEER OF DESIGN AND ENVIRONMENT
May 13, 2022
Stephen M. Smith
DIRECTOR OF HIGHWAYS PROJECT IMPLEMENTATION

**PRINTED BY THE AUTHORITY
OF THE STATE OF ILLINOIS**

100% STATE

SUMMARY OF QUANTITIES			TOTAL QUANTITIES	CONSTRUCTION TYPE CODE		
CODE NO	ITEM	UNIT		0021		
40600290	BITUMINOUS MATERIALS (TACK COAT)	POUND	19279	19279		
44000157	HOT-MIX ASPHALT SURFACE REMOVAL, 2"	SQ YD	42840	42840		
48203100	HOT-MIX ASPHALT SHOULDERS	TON	4799	4799		
64200116	SHOULDER RUMBLE STRIPS, 16 INCH	FOOT	94760	94760		
67100100	MOBILIZATION	L SUM	1	1		
70100420	TRAFFIC CONTROL AND PROTECTION, STANDARD	EACH	8	8		
	701411					
70100700	TRAFFIC CONTROL AND PROTECTION, STANDARD	L SUM	1	1		
	701406					
70100800	TRAFFIC CONTROL AND PROTECTION, STANDARD	L SUM	1	1		
	701401					
70107025	CHANGEABLE MESSAGE SIGN	CAL DA	28	28		
* 78009006	MODIFIED URETHANE PAVEMENT MARKING - LINE 6"	FOOT	94760	94760		

* SPECIALTY ITEM

MODEL: Default
 FILE NAME: p:\project-new\benefit.com\FW\DOT\Documents\DOT Office\Dir\dir_7\Project\74B\1\CAD\DATA\CAD\Sheet\74B14-SP-S00.dgn

USER NAME = stefenmk	DESIGNED -	REVISED -
	DRAWN -	REVISED -
PLOT SCALE = 100,0000' / in.	CHECKED -	REVISED -
PLOT DATE = 4/4/2022	DATE -	REVISED -

**STATE OF ILLINOIS
DEPARTMENT OF TRANSPORTATION**

SUMMARY OF QUANTITIES

SCALE: SHEET 1 OF 2 SHEETS STA. TO STA.

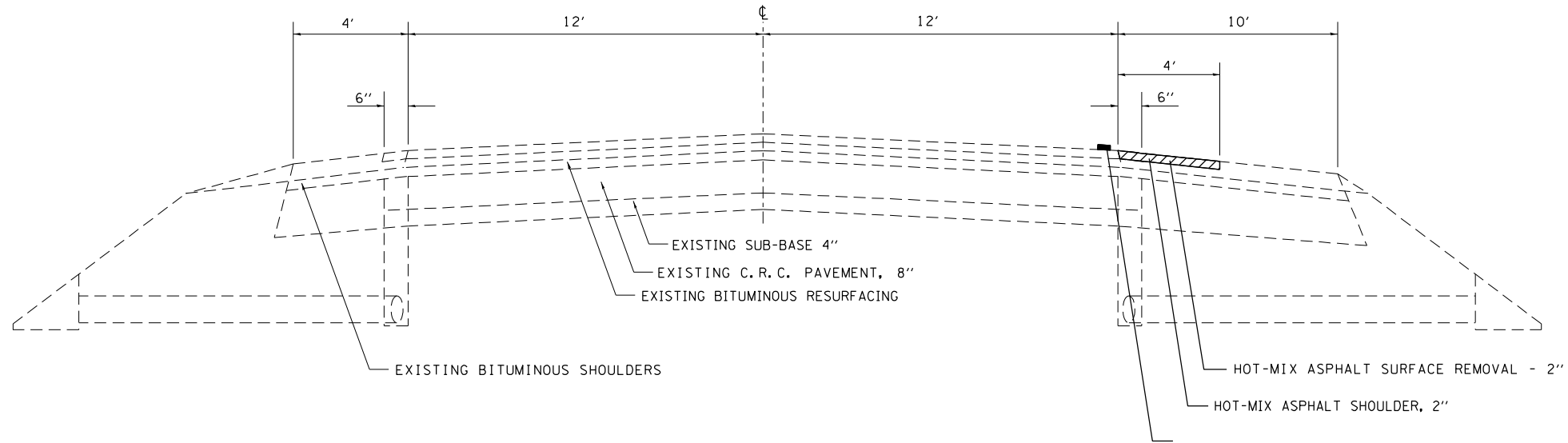
F.A.I. RTE.	SECTION	COUNTY	TOTAL SHEETS	SHEET NO.
70	D7 SHOULDER REPAIRS 2022-1	FAYETTE	16	3
CONTRACT NO. 74B14				
			ILLINOIS FED. AID PROJECT	

TYPICAL CROSS SECTION

F. A. I. 70 EASTBOUND DRIVING LANE

STATION 1505+55 TO STATION 1548+37
 STATION 1552+17 TO STATION 1594+52
 STATION 1597+80 TO STATION 1610+34
 STATION 90+55 TO STATION 117+18
 STATION 129+48 TO STATION 134+71
 STATION 142+10 TO STATION 379+73
 STATION 386+12 TO STATION 399+14

STATION 398+86 TO STATION 406+35
 STATION 416+09 TO STATION 448+15
 STATION 460+10 TO STATION 478+98
 STATION 485+59 TO STATION 495+39
 STATION 501+47 TO STATION 519+40
 STATION 519+12 TO STATION 522+93



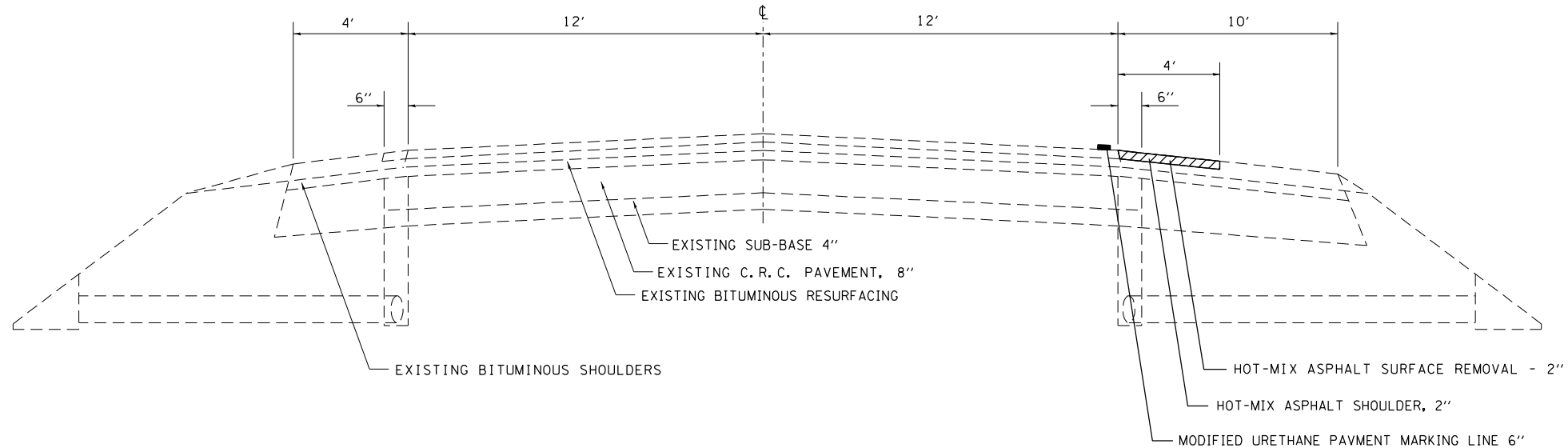
NOT DRAWN TO SCALE

TYPICAL CROSS SECTION

F. A. I. 70 WESTBOUND DRIVING LANE

STATION 521+43 TO STATION 519+12
 STATION 519+40 TO STATION 502+07
 STATION 492+94 TO STATION 486+97
 STATION 480+20 TO STATION 459+27
 STATION 453+67 TO STATION 411+49
 STATION 407+77 TO STATION 398+87
 STATION 399+14 TO STATION 385+35

STATION 377+03 TO STATION 142+72
 STATION 135+24 TO STATION 129+98
 STATION 117+04 TO STATION 90+55
 STATION 1610+34 TO STATION 1592+72
 STATION 1591+67 TO STATION 1555+50
 STATION 1551+71 TO STATION 1505+55



NOT DRAWN TO SCALE

FILE NAME =	USER NAME = steffenk	DESIGNED -	REVISED -
p:\1\dot-pw.bentley.com\PWIDOT\Documents\IDOT Offices\District 7\Projects\74B14\CAD\Drawings\Drawings\74B14-sht-typicals.dgn		DRAWN -	REVISED -
		CHECKED -	REVISED -
		DATE -	REVISED -

**STATE OF ILLINOIS
 DEPARTMENT OF TRANSPORTATION**

TYPICAL CROSS SECTIONS

SCALE: NA SHEET NO. 1 OF 2 SHEETS STA. TO STA.

F.A.I. RTE.	SECTION	COUNTY	TOTAL SHEETS	SHEET NO.
70	07 SHOULDER REPAIRS 2022-1	FAYETTE	16	4
CONTRACT NO. 74B14				
ILLINOIS FED. AID PROJECT				

EB SHOULDER		LENGTH	WIDTH	AREA	AREA	SURFACE COURSE	BITUMINOUS MATERIALS (TACK COAT)	HOT-MIX ASPHALT SHOULDERS	HOT-MIX ASPHALT SURFACE REMOVAL. 2"	SHOULDER RUMBLE STRIPS, 16 INCH	MODIFIED URETHANE PAVEMENT MARKING LINE 6"	
STATION	TO	STATION	FEET	FEET	SQ FT	SQ YD	THICKNESS	40600290	48203100	44000157	64200116	78009006
							INCH	POUND	TON	SQ YD	FEET	FEET
1505+55.00		1548+37.00	4282.0	4.0	17128.0	1903.1	2	856.4	213.1	1903.1	4282.0	4282.0
1552+17.00		1594+52.00	4235.0	5.0	21175.0	2352.8	2	1058.8	263.5	2352.8	4235.0	4235.0
1597+80.00		1610+34.00	1254.0	4.0	5016.0	557.3	2	250.8	62.4	557.3	1254.0	1254.0
1610+34.00		90+55.00	STATION EQUATION									
90+55.00		117+18.00	2663.0	4.0	10652.0	1183.6	2	532.6	132.6	1183.6	2663.0	2663.0
129+48.00		134+71.00	523.0	4.0	2092.0	232.4	2	104.6	26.0	232.4	523.0	523.0
142+10.00		379+73.00	23763.0	4.0	95052.0	10561.3	2	4752.6	1182.9	10561.3	23763.0	23763.0
386+12.00		399+14.00	1302.0	5.0	6510.0	723.3	2	325.5	81.0	723.3	1302.0	1302.0
399+14.00		398+87.00	STATION EQUATION									
398+87.00		406+35.00	748.0	4.0	2992.0	332.4	2	149.6	37.2	332.4	748.0	748.0
416+09.00		448+15.00	3206.0	4.0	12824.0	1424.9	2	641.2	159.6	1424.9	3206.0	3206.0
460+10.00		478+98.00	1888.0	4.0	7552.0	839.1	2	377.6	94.0	839.1	1888.0	1888.0
485+59.00		495+39.00	980.0	5.0	4900.0	544.4	2	245.0	61.0	544.4	980.0	980.0
501+47.00		519+40.00	1793.0	4.0	7172.0	796.9	2	358.6	89.3	796.9	1793.0	1793.0
519+40.00		519+12.00	STATION EQUATION									
519+12.00		522+93.00	381.0	4.0	1524.0	169.3	2	76.2	19.0	169.3	381.0	381.0
							TOTAL=	9730	2422	21621	47018	47018

WB SHOULDER		LENGTH	WIDTH	AREA	AREA	SURFACE COURSE	BITUMINOUS MATERIALS (TACK COAT)	HOT-MIX ASPHALT SHOULDERS	HOT-MIX ASPHALT SURFACE REMOVAL. 2"	SHOULDER RUMBLE STRIPS, 16 INCH	MODIFIED URETHANE PAVEMENT MARKING LINE 6"	
STATION	TO	STATION	FEET	FEET	SQ FT	SQ YD	THICKNESS	40600290	48203100	44000157	64200116	78009006
							INCH	POUND	TON	SQ YD	FEET	FEET
521+43.00		519+12.00	231.0	4.0	924.0	102.7	2	46.2	11.5	102.7	231.0	231.0
519+12.00		519+40.00	STATION EQUATION									
519+40.00		502+07.00	1733.0	4.0	6932.0	770.2	2	346.6	86.3	770.2	1733.0	1733.0
492+94.00		486+97.00	597.0	4.0	2388.0	265.3	2	119.4	29.7	265.3	597.0	597.0
480+20.00		459+27.00	2093.0	4.0	8372.0	930.2	2	418.6	104.2	930.2	2093.0	2093.0
453+67.00		411+49.00	4218.0	4.0	16872.0	1874.7	2	843.6	210.0	1874.7	4218.0	4218.0
407+77.00		398+87.00	890.0	4.0	3560.0	395.6	2	178.0	44.3	395.6	890.0	890.0
398+87.00		399+14.00	STATION EQUATION									
399+14.00		385+35.00	1379.0	4.0	5516.0	612.9	2	275.8	68.6	612.9	1379.0	1379.0
377+03.00		142+72.00	23431.0	4.0	93724.0	10413.8	2	4686.2	1166.3	10413.8	23431.0	23431.0
135+24.00		129+98.00	526.0	4.0	2104.0	233.8	2	105.2	26.2	233.8	526.0	526.0
117+04.00		90+55.00	2649.0	4.0	10596.0	1177.3	2	529.8	131.9	1177.3	2649.0	2649.0
90+55.00		1610+34.00	STATION EQUATION									
1610+34.00		1592+72.00	1762.0	4.0	7048.0	783.1	2	352.4	87.7	783.1	1762.0	1762.0
1591+67.00		1555+50.00	3617.0	4.0	14468.0	1607.6	2	723.4	180.0	1607.6	3617.0	3617.0
1551+71.00		1505+55.00	4616.0	4.0	18464.0	2051.6	2	923.2	229.8	2051.6	4616.0	4616.0
							TOTAL=	9549	2377	21219	47742	47742

MODEL: Default
 FILE: \\na11e-pw-bentley.com\P\W\DOT\Documents\DOT Office\Dir\dir_7\Project\74B-1\UCAD\BentleyCAD\Project\74B-1\EB-Shoulder.dwg

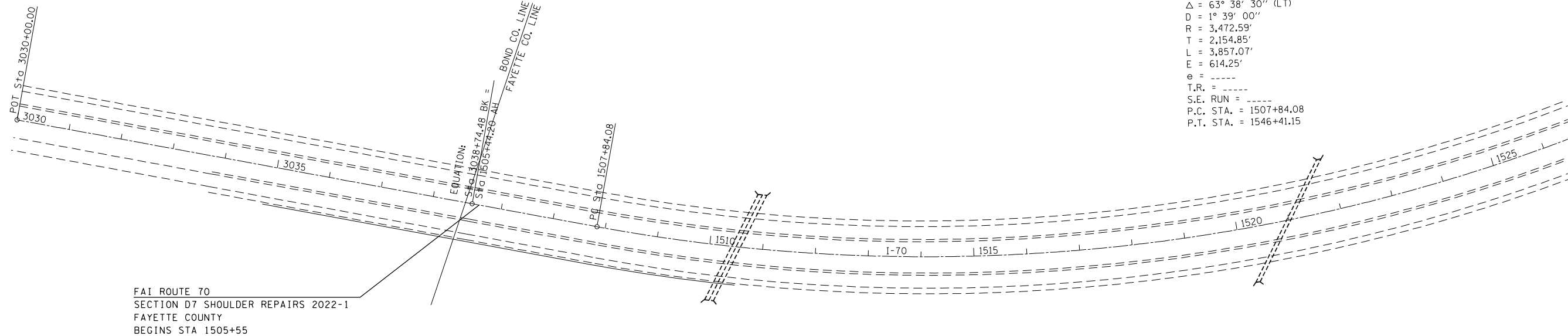
USER NAME = stefnmk	DESIGNED -	REVISED -
	DRAWN -	REVISED -
PLOT SCALE = 100,0000' / in.	CHECKED -	REVISED -
PLOT DATE = 4/4/2022	DATE -	REVISED -

**STATE OF ILLINOIS
DEPARTMENT OF TRANSPORTATION**

SCHEDULES

SCALE: SHEET OF SHEETS STA. TO STA.

F.A.J. RTE.	SECTION	COUNTY	TOTAL SHEETS	SHEET NO.
70	D7 SHOULDER REPAIRS 2022-1	FAYETTE	16	5
CONTRACT NO. 74B14				
ILLINOIS FED. AID PROJECT				



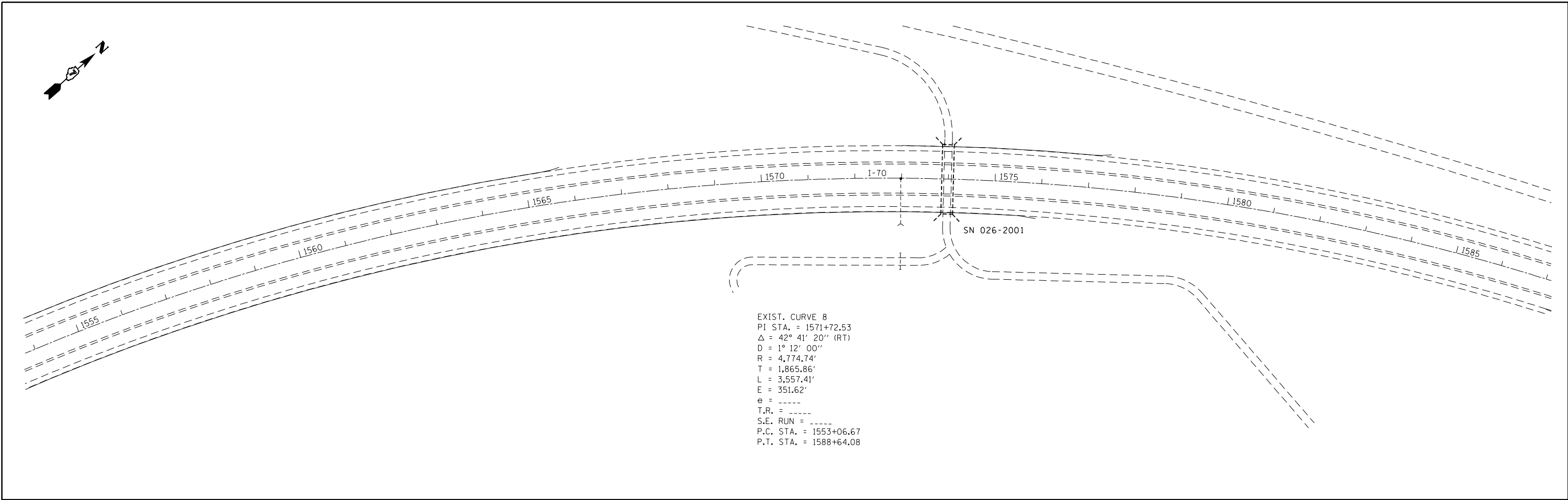
FILE NAME =	USER NAME = steffenmk	DESIGNED -	REVISED -
p:\dot-pw\bentley.com\PWIDOT\Documents\IDOT Offices\District 7\Projects\74B14\CAD\Drawings\74B14-sht-plan.dgn		CHECKED -	REVISED -
		DATE -	REVISED -

**STATE OF ILLINOIS
DEPARTMENT OF TRANSPORTATION**

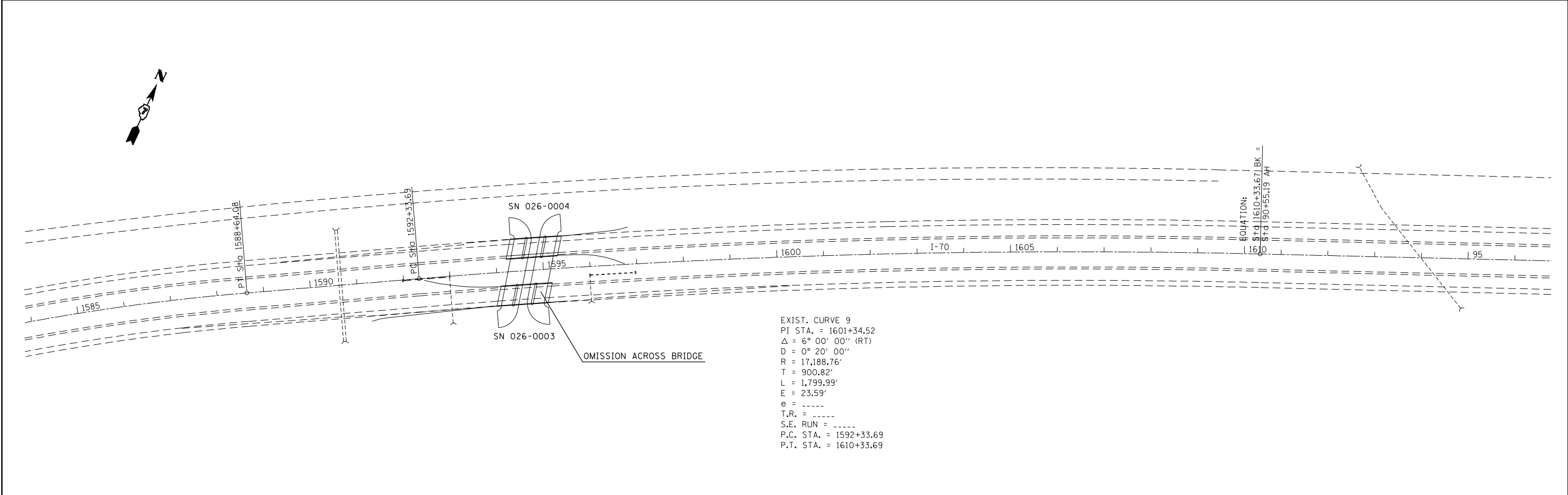
PLAN

SCALE: NA SHEET NO. 1 OF 10 SHEETS STA. 3033+80 TO STA. 1557+00

F.A.I. RTE.	SECTION	COUNTY	TOTAL SHEETS	SHEET NO.
70	07 SHOULDER REPAIRS 2022-1	FAYETTE	16	6
CONTRACT NO. 74B14				
ILLINOIS FED. AID PROJECT				



EXIST. CURVE 8
 PI STA. = 1571+72.53
 $\Delta = 42^\circ 41' 20''$ (RT)
 D = 1° 12' 00"
 R = 4,774.74'
 T = 1,865.86'
 L = 3,557.41'
 E = 351.62'
 e = -----
 T.R. = -----
 S.E. RUN = -----
 P.C. STA. = 1553+06.67
 P.T. STA. = 1588+64.08



EXIST. CURVE 9
 PI STA. = 1601+34.52
 $\Delta = 6^\circ 00' 00''$ (RT)
 D = 0° 20' 00"
 R = 17,188.76'
 T = 900.82'
 L = 1,799.99'
 E = 23.59'
 e = -----
 T.R. = -----
 S.E. RUN = -----
 P.C. STA. = 1592+33.69
 P.T. STA. = 1610+33.69

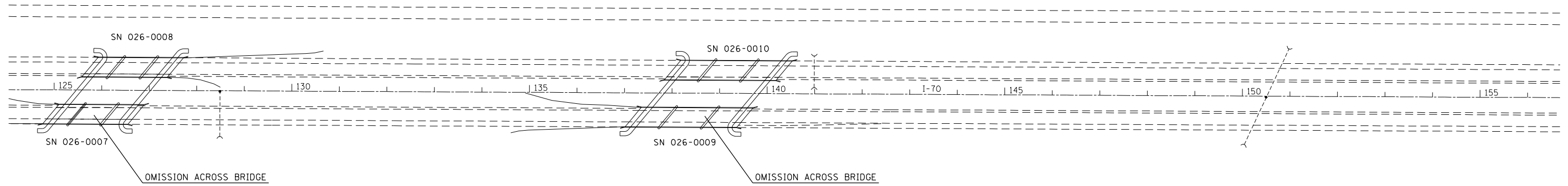
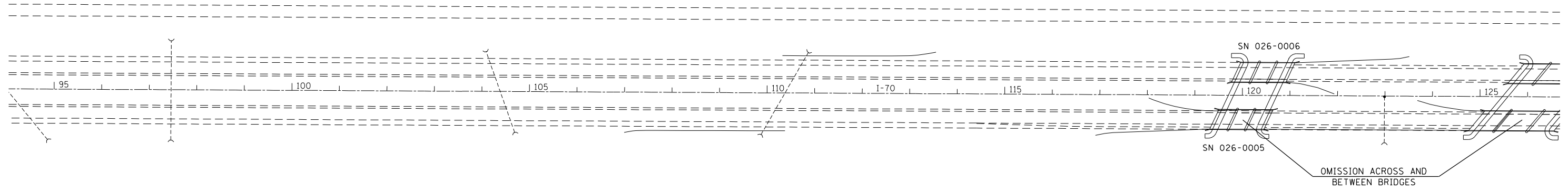
FILE NAME =	USER NAME = steffenk	DESIGNED -	REVISED -
pw:\idot-pw.bentley.com\PWIDOT\Documents\IDOT Offices\District 7\Projects\74B14\CAD\Drawings\Drawings\74B14-sht-plan.dgn		CHECKED -	REVISED -
		DATE -	REVISED -

**STATE OF ILLINOIS
 DEPARTMENT OF TRANSPORTATION**

PLAN

SCALE: NA SHEET NO. 2 OF 10 SHEETS STA. 1554+00 TO STA. 96+00

F.A.I. RTE.	SECTION	COUNTY	TOTAL SHEETS	SHEET NO.
70	07 SHOULDER REPAIRS 2022-1	FAYETTE	16	7
CONTRACT NO. 74B14				
ILLINOIS FED. AID PROJECT				

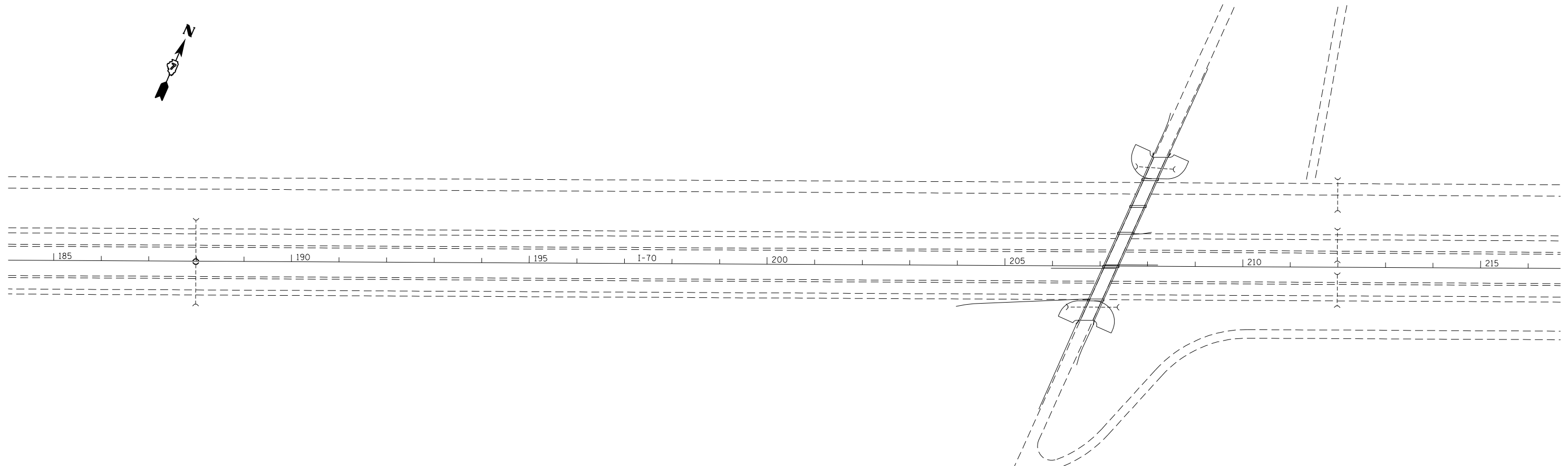
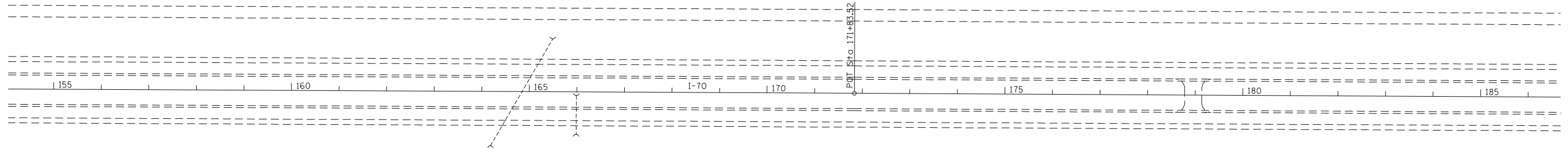


FILE NAME =	USER NAME = steffenk	DESIGNED -	REVISED -
p:\dot-pw.bentley.com\PWIDOT\Documents\IDOT Offices\District 7\Projects\74B14\CAD\Drawings\Drawings\74B14-sht-plan.dgn		CHECKED -	REVISED -
		DATE -	REVISED -

**STATE OF ILLINOIS
DEPARTMENT OF TRANSPORTATION**

PLAN			
SCALE: NA	SHEET NO. 3 OF 10 SHEETS	STA. 95+00	TO STA. 156+00

F.A.I. RTE.	SECTION	COUNTY	TOTAL SHEETS	SHEET NO.
70	07 SHOULDER REPAIRS 2022-1	FAYETTE	16	8
CONTRACT NO. 74B14				
ILLINOIS FED. AID PROJECT				



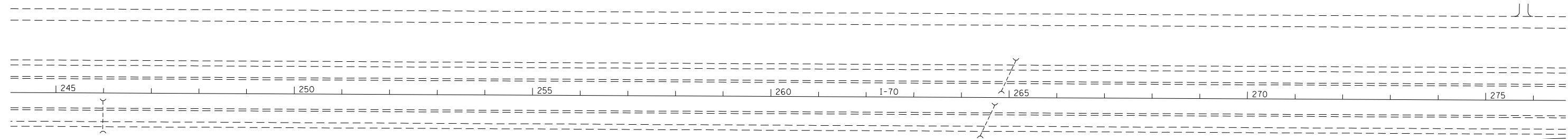
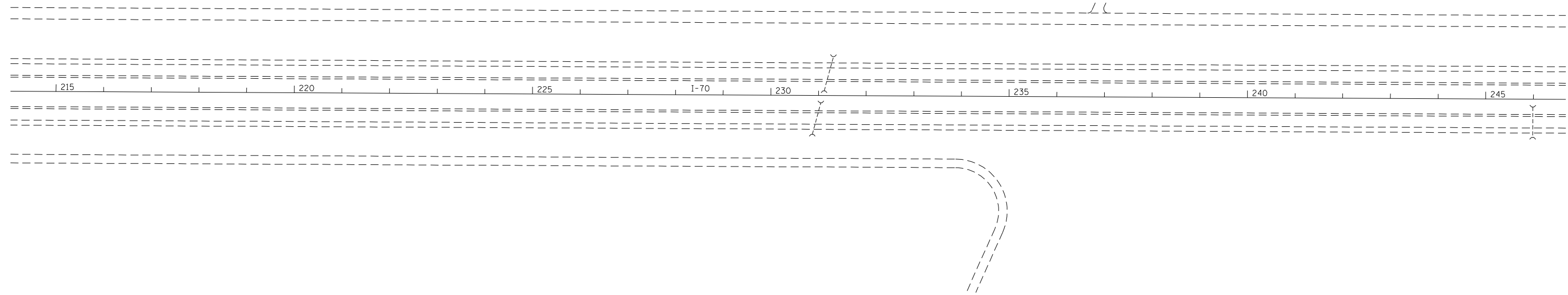
FILE NAME =	USER NAME = steffenmk	DESIGNED -	REVISED -
p:\dot-pw.bentley.com\PIWIDOT\Documents\IDOT Offices\District 7\Projects\74B14\CAD\Drawings\Drawings\74B14-sht-plan.dgn		CHECKED -	REVISED -
	PLOT SCALE = 200.0000' / in.	DATE -	REVISED -
	PLOT DATE = 4/4/2022		

**STATE OF ILLINOIS
DEPARTMENT OF TRANSPORTATION**

PLAN

SCALE: NA SHEET NO. 4 OF 10 SHEETS STA. 155+00 TO STA. 216+00

F.A.I. RTE.	SECTION	COUNTY	TOTAL SHEETS	SHEET NO.
70	07 SHOULDER REPAIRS 2022-1	FAYETTE	16	9
CONTRACT NO. 74B14				
ILLINOIS FED. AID PROJECT				



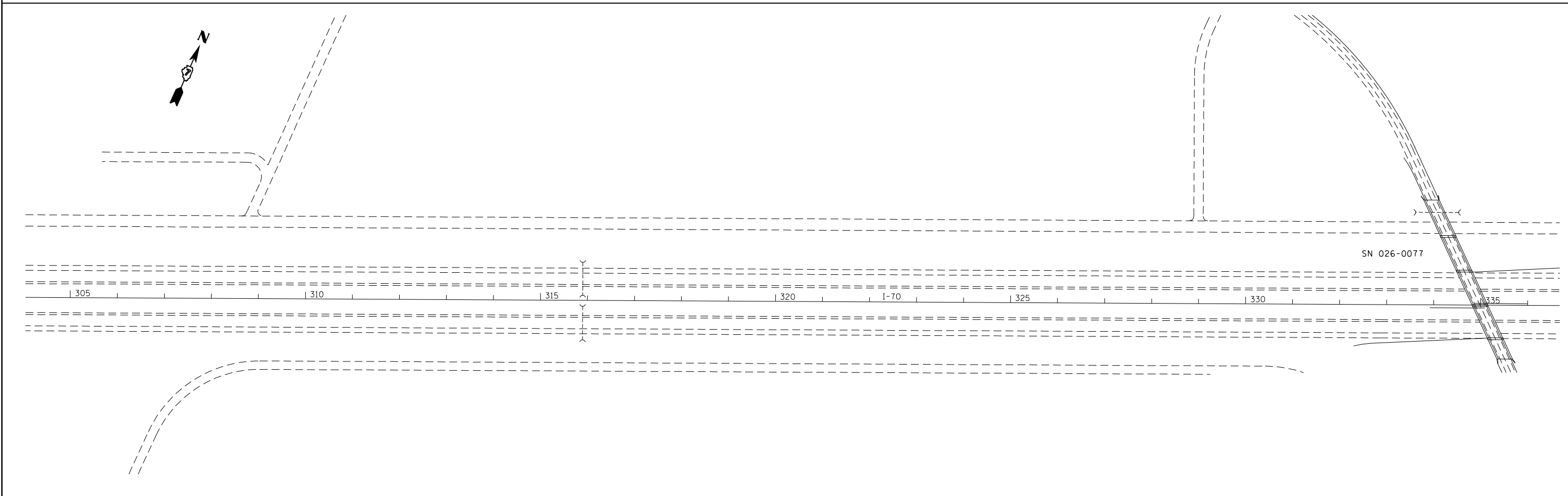
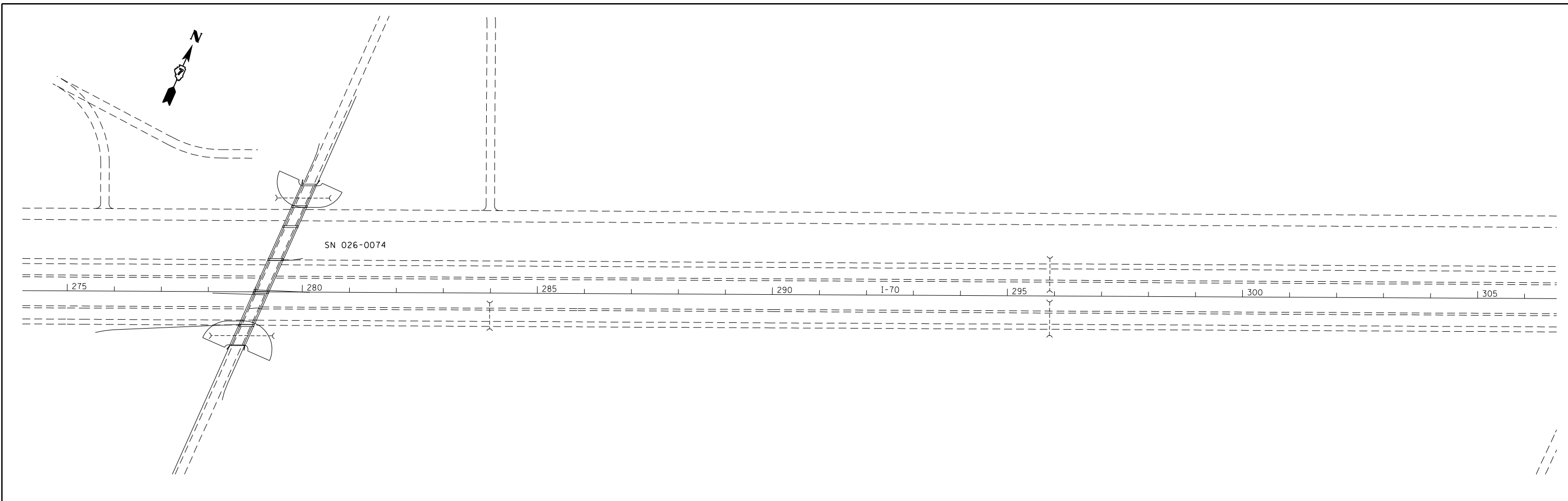
FILE NAME =	USER NAME = steffenmk	DESIGNED -	REVISED -
p:\1\dot-pw.bentley.com\PWIDOT\Documents\IDOT Offices\District 7\Projects\74B14\CADD\Drawings\Drawings\74B14-sht-plan.dgn		CHECKED -	REVISED -
	PLOT SCALE = 200.0000' / in.	DATE -	REVISED -
	PLOT DATE = 4/4/2022		

**STATE OF ILLINOIS
DEPARTMENT OF TRANSPORTATION**

PLAN

SCALE: NA SHEET NO. 5 OF 10 SHEETS STA. 215+00 TO STA. 276+00

F.A.I RTE.	SECTION	COUNTY	TOTAL SHEETS	SHEET NO.
70	07 SHOULDER REPAIRS 2022-1	FAYETTE	16	10
CONTRACT NO. 74B14				
ILLINOIS FED. AID PROJECT				



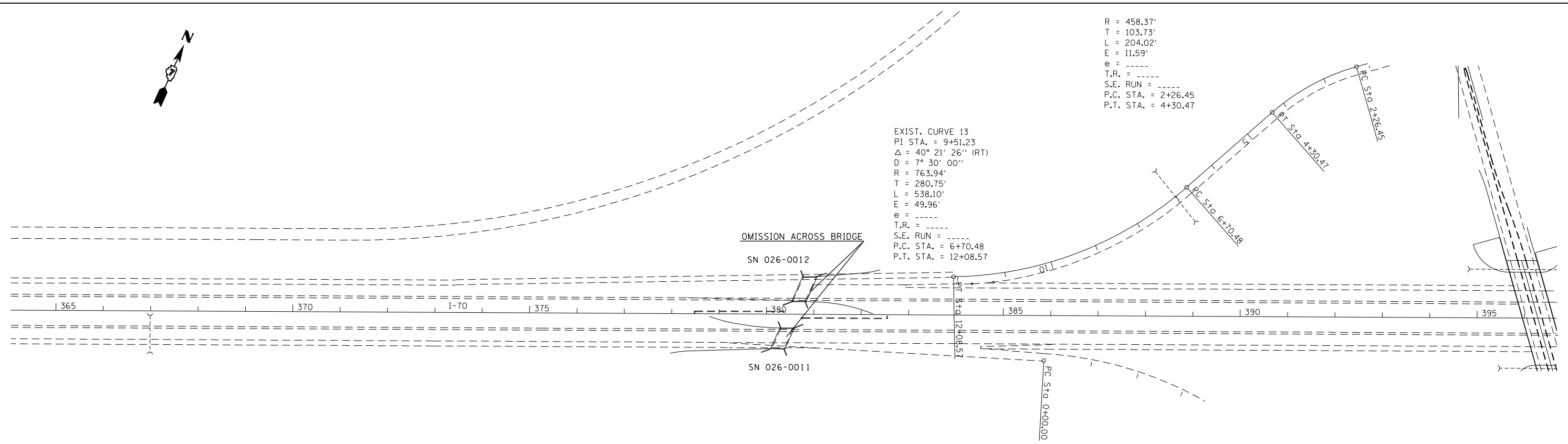
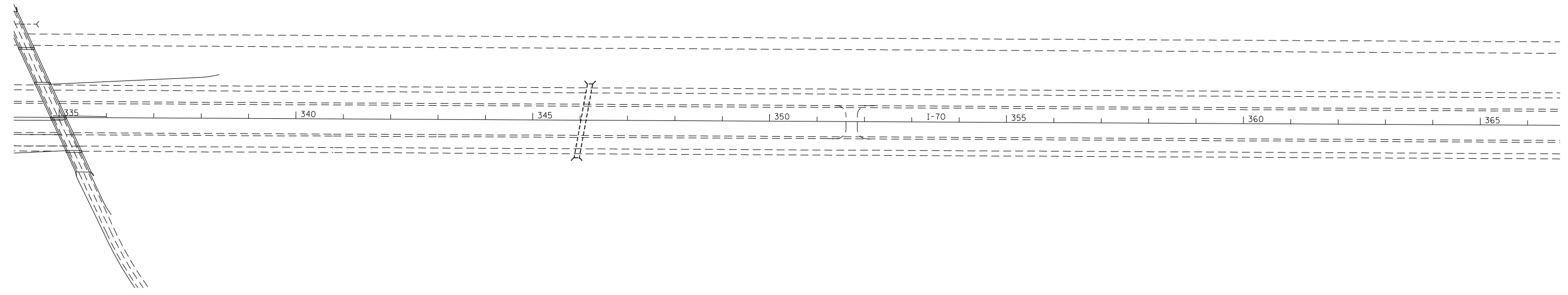
FILE NAME =	USER NAME = steffenk	DESIGNED -	REVISED -
p:\dot-pw.bentley.com\PIWIDOT\Documents\IDOT Offices\District 7\Projects\74B14\CAD\Drawings\Drawings\0774B14-sht-plan.dgn		CHECKED -	REVISED -
		DATE -	REVISED -

**STATE OF ILLINOIS
DEPARTMENT OF TRANSPORTATION**

PLAN

SCALE: NA SHEET NO. 6 OF 10 SHEETS STA. 275+00 TO STA. 336+00

F.A.I. RTE.	SECTION	COUNTY	TOTAL SHEETS	SHEET NO.
70	07 SHOULDER REPAIRS 2022-1	FAYETTE	16	11
CONTRACT NO. 74B14				
ILLINOIS FED. AID PROJECT				



R = 458.37'
 T = 103.73'
 L = 204.02'
 E = 11.59'
 e = -----
 T.R. = -----
 S.E. RUN = -----
 P.C. STA. = 2+26.45
 P.T. STA. = 4+30.47

EXIST. CURVE 13
 PI STA. = 9+51.23
 Δ = 40° 21' 26" (RT)
 D = 7° 30' 00"
 R = 763.94'
 T = 280.75'
 L = 538.10'
 E = 49.96'
 e = -----
 T.R. = -----
 S.E. RUN = -----
 P.C. STA. = 6+70.48
 P.T. STA. = 12+08.57

OMISSION ACROSS BRIDGE
 SN 026-0012

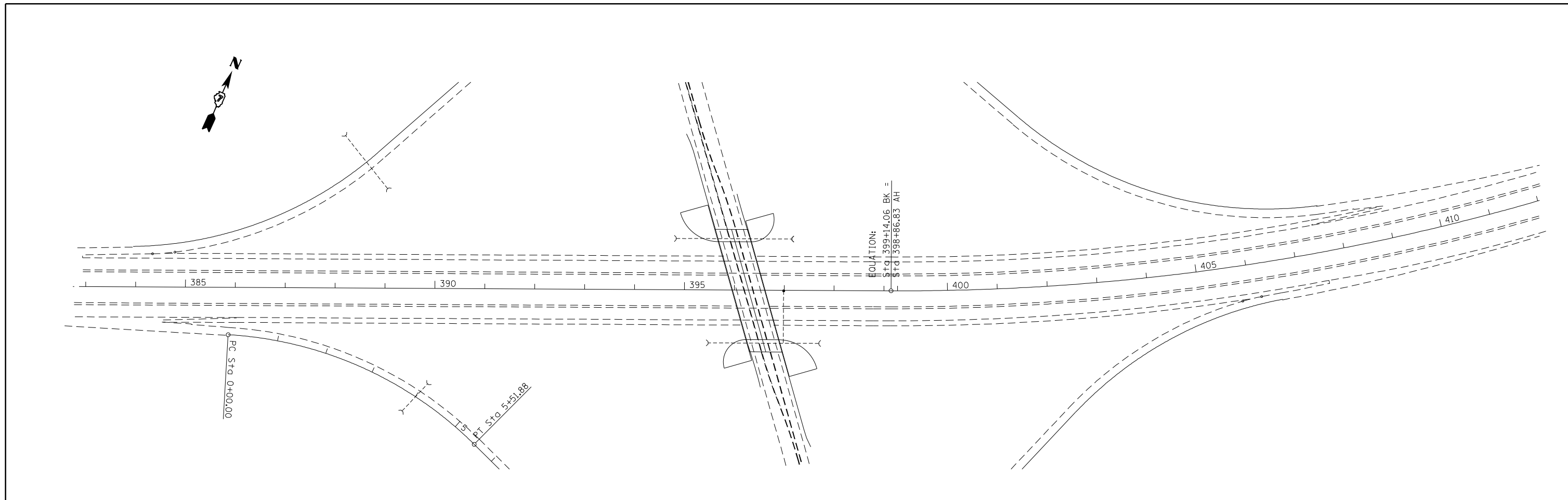
SN 026-0011

FILE NAME =	USER NAME = steffenmk	DESIGNED -	REVISED -
p:\1ldot-pw.bentley.com\PWIDOT\Documents\DOT Offices\District 7\Projects\74B14\CAD\Drawings\74B14-sht-plan.dgn		CHECKED -	REVISED -
		DATE -	REVISED -

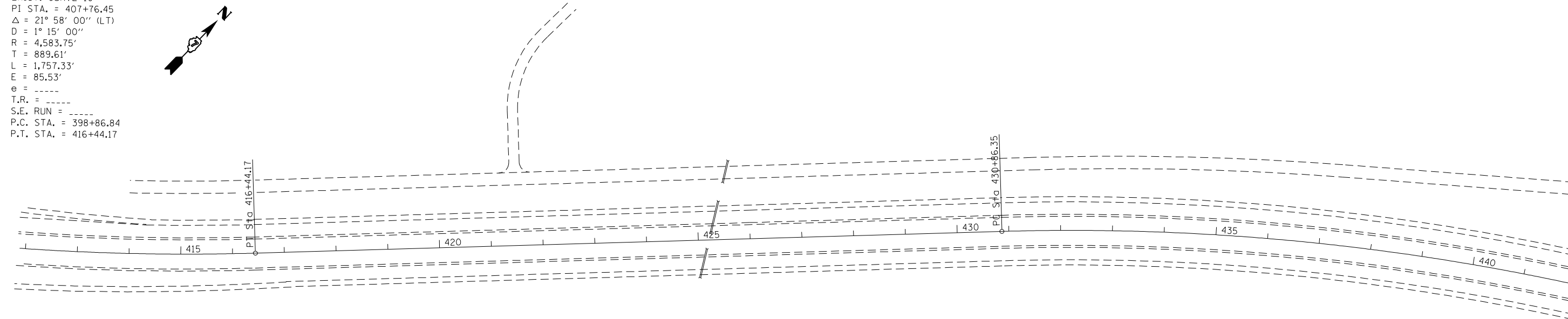
STATE OF ILLINOIS
DEPARTMENT OF TRANSPORTATION

PLAN
 SCALE: NA SHEET NO. 7 OF 10 SHEETS STA. 335+00 TO STA. 396+00

F.A.I. RTE.	SECTION	COUNTY	TOTAL SHEETS	SHEET NO.
70	DT SHOULDER REPAIR 2022-1	FAYETTE	16	12
CONTRACT NO. 74B14				
ILLINOIS FED. AID PROJECT				



EXIST. CURVE 10
 PI STA. = 407+76.45
 $\Delta = 21^\circ 58' 00''$ (LT)
 $D = 1^\circ 15' 00''$
 $R = 4,583.75'$
 $T = 889.61'$
 $L = 1,757.33'$
 $E = 85.53'$
 $e = \text{-----}$
 $T.R. = \text{-----}$
 $S.E. \text{ RUN} = \text{-----}$
 $P.C. \text{ STA.} = 398+86.84$
 $P.T. \text{ STA.} = 416+44.17$



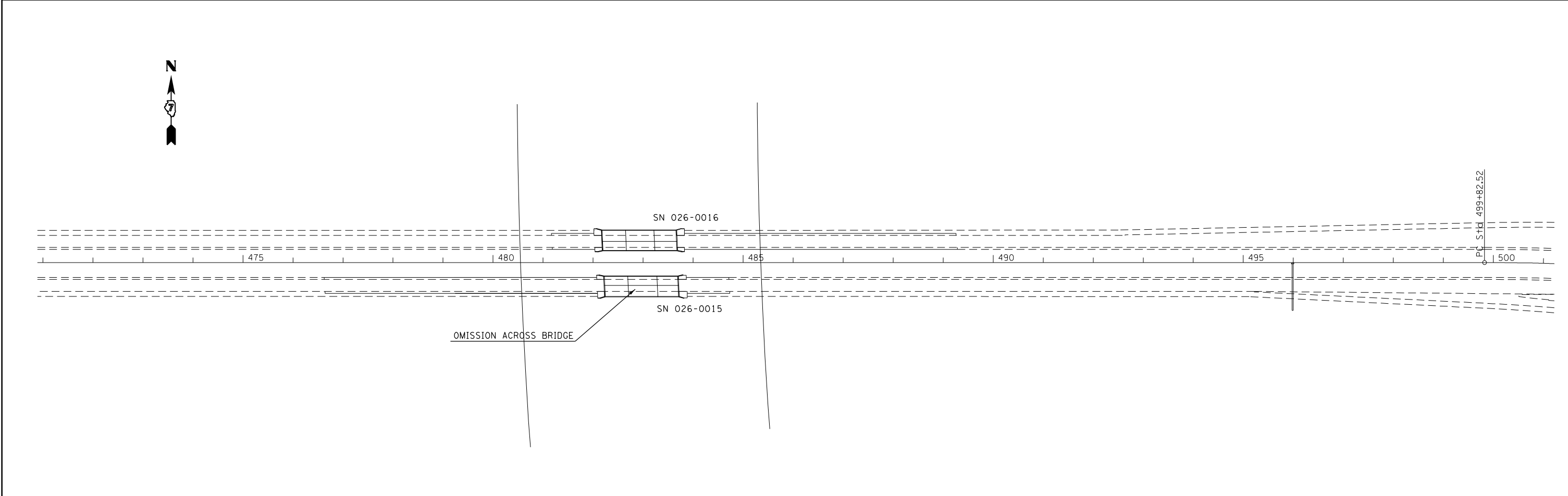
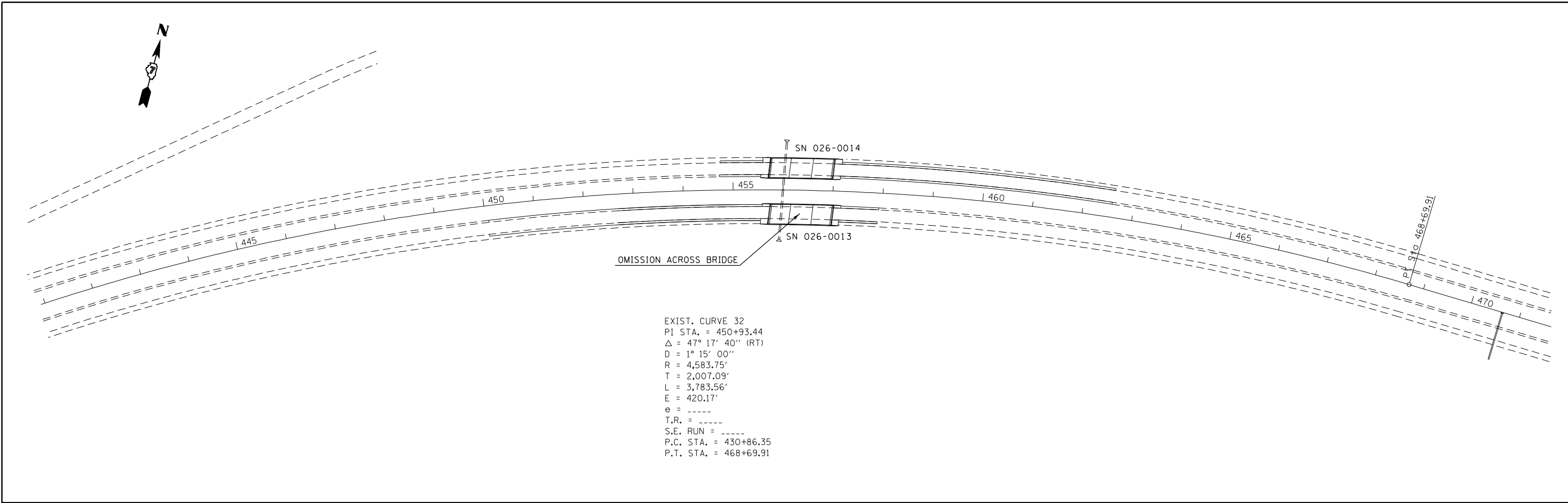
FILE NAME =	USER NAME = steffenk	DESIGNED -	REVISED -
p:\dot-pw\bentley.com\PWIDOT\Documents\IDOT Offices\District 7\Projects\74B14\CAD\Drawings\Drawings\74B14-sht-plan.dgn		CHECKED -	REVISED -
		DATE -	REVISED -

**STATE OF ILLINOIS
 DEPARTMENT OF TRANSPORTATION**

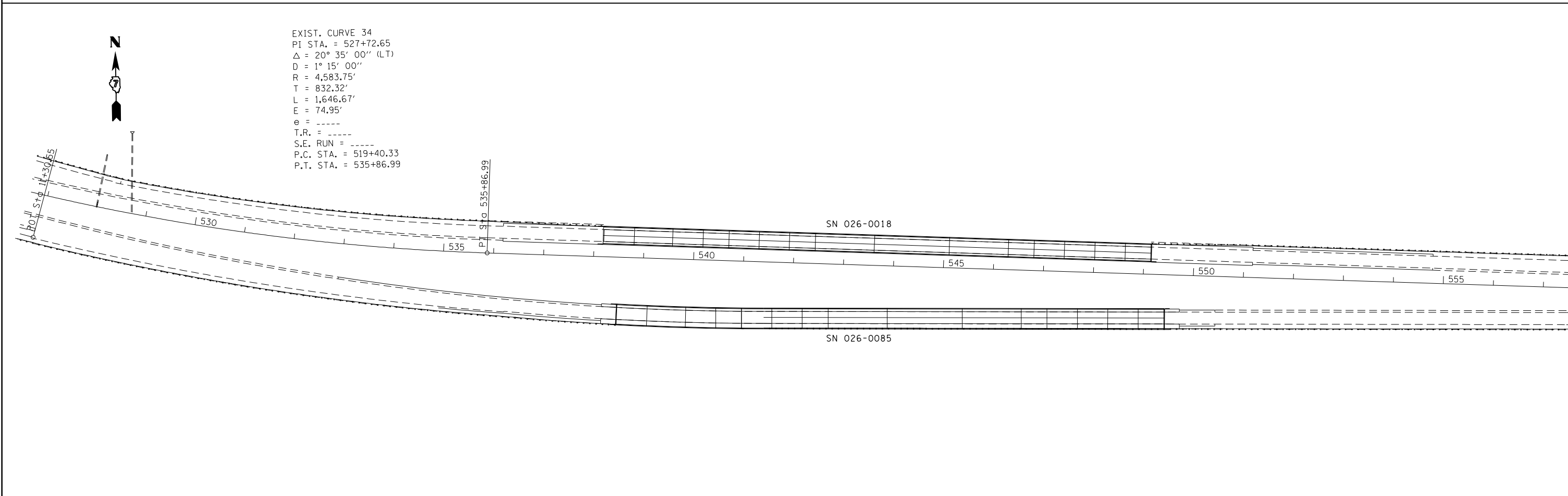
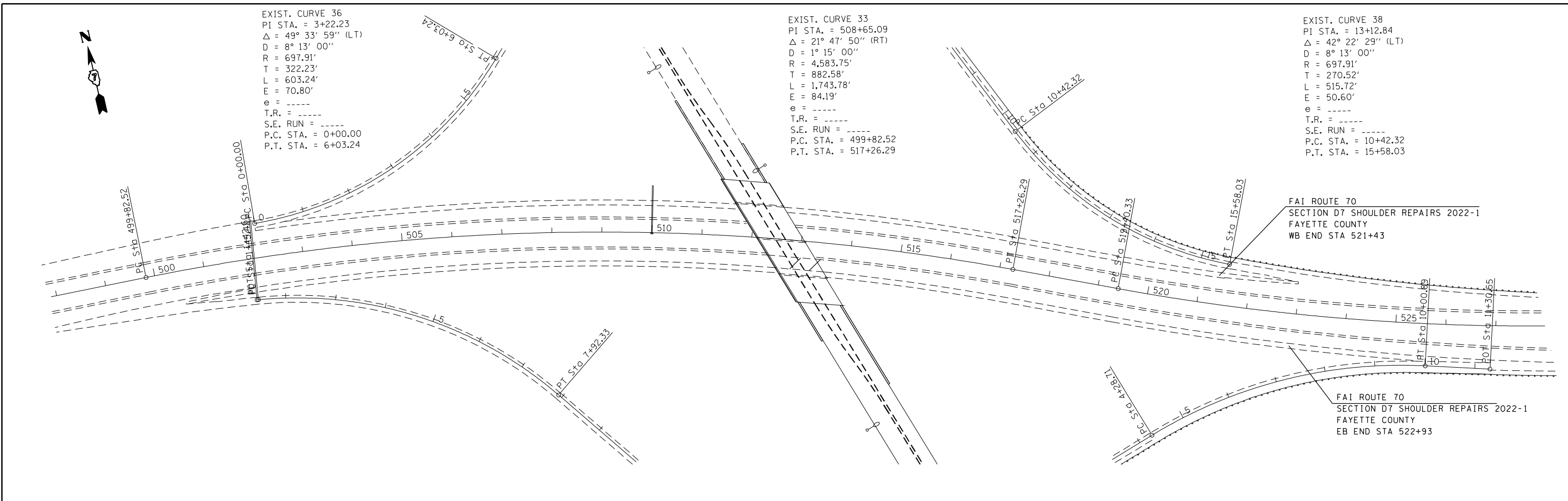
PLAN

SCALE: NA SHEET NO. 8 OF 10 SHEETS STA. 383+00 TO STA. 441+00

F.A.I. RTE.	SECTION	COUNTY	TOTAL SHEETS	SHEET NO.
70	07 SHOULDER REPAIRS 2022-1	FAYETTE	16	13
CONTRACT NO. 74B14				
ILLINOIS FED. AID PROJECT				



FILE NAME =	USER NAME = steffenk	DESIGNED -	REVISED -	STATE OF ILLINOIS DEPARTMENT OF TRANSPORTATION	PLAN		F.A.I. RTE.	SECTION	COUNTY	TOTAL SHEETS	SHEET NO.	
pw:\idot-pw.bentley.com\PIDOT\Documents\IDOT Offices\District 7\Projects\74B14\CAD\Drawings\Drawings\74B14-sht-plan.dgn	DRWN	CHECKED -	REVISED -		SCALE: NA	SHEET NO. 9 OF 10 SHEETS	STA. 441+00 TO STA. 501+00	70	07 SHOULDER REPAIRS 2022-1	FAYETTE	16	14
PLOT SCALE = 200.0000' / in.		DATE -	REVISED -		CONTRACT NO. 74B14							
PLOT DATE = 4/4/2022					ILLINOIS FED. AID PROJECT							



FILE NAME =	USER NAME = steffenk	DESIGNED -	REVISED -	STATE OF ILLINOIS DEPARTMENT OF TRANSPORTATION	PLAN	F.A.I. RTE.	SECTION	COUNTY	TOTAL SHEETS	SHEET NO.
p:\dot-pw.bentley.com\PWIDOT\Documents\DOT Offices\District 7\Projects\74814\CADD\Drawings\74814-sht-plan.dgn	CHECKED -	REVISED -	70			07 SHOULDER REPAIRS 2022-1	FAYETTE	16	15	
PLOT SCALE = 200.0000' / in.	DATE -	REVISED -	CONTRACT NO. 74B14							
PLOT DATE = 4/4/2022	DATE -	REVISED -	ILLINOIS FED. AID PROJECT							
SCALE: NA						SHEET NO. 10 OF 10 SHEETS		STA. 498+00 TO STA. 557+00		

