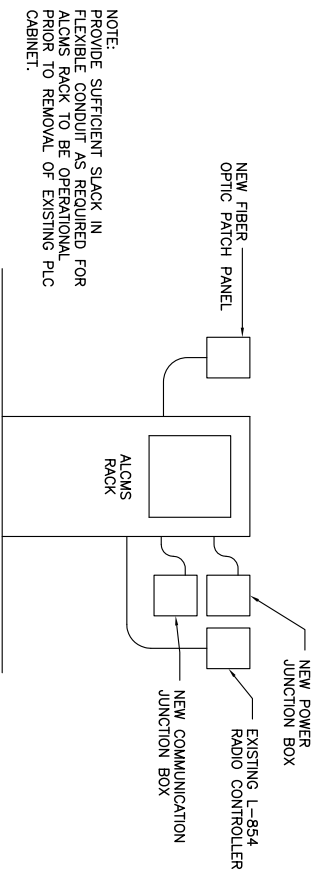
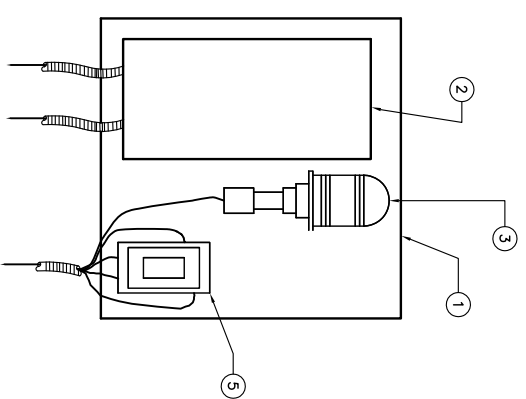


- NOTES**
1. INSTALL NEW DISTRIBUTED CONTROL AND MONITORING EQUIPMENT (ACE-II) ON UNITSRUIT. MATCH EXISTING CONDITIONS. COORDINATE SIZE AND CONDUIT OPENINGS WITH ALCMS MANUFACTURER.
 2. INSTALL MALE AND FEMALE L-824 CONNECTOR TO CONNECT AIRFIELD LIGHTING CIRCUITS IN HIGH VOLTAGE WIREWAY.

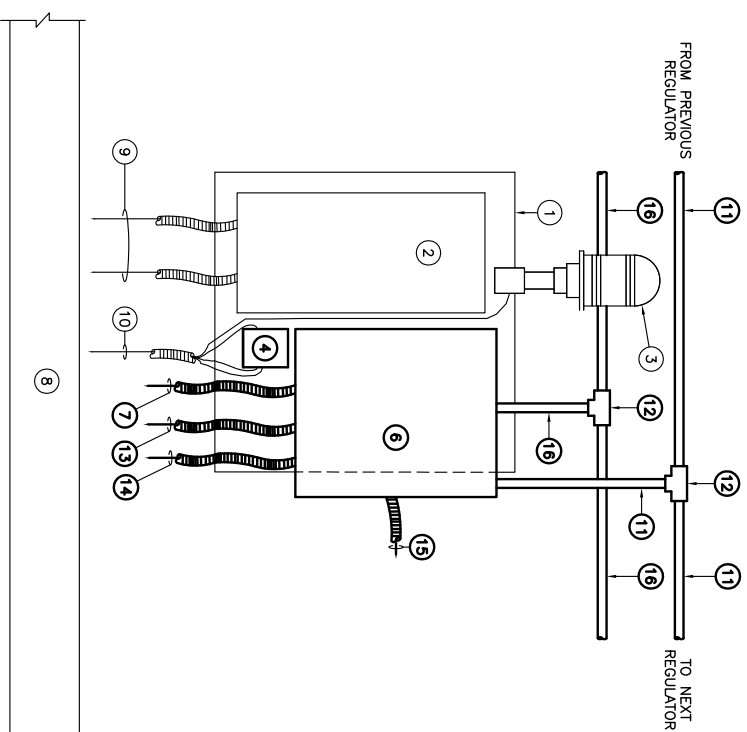
- EQUIPMENT NOMENCLATURE**
1. EXISTING EQUIPMENT MOUNTING PLATE TO REMAIN.
 2. EXISTING REGULATOR DISCONNECT SWITCH TO REMAIN.
 3. EXISTING RUNWAY/TAXIWAY INDICATOR LIGHT TO BE RELOCATED.
 4. RELOCATED S-1 CUT-OUT.
 5. EXISTING S-1 PLUG CUT-OUT TO BE RELOCATED.
 6. NEW DISTRIBUTED CONTROL AND MONITORING EQUIPMENT (ACE-II) - SEE NOTE 1.
 7. NEW DATA/CONTROL CABLES (AS REQUIRED BY ALCMS MANUFACTURER) IN 1" CONDUIT TO EXISTING REGULATOR.
 8. EXISTING LOW VOLTAGE AND HIGH VOLTAGE 12"x12" WIREWAY - SEE NOTE 2.
 9. EXISTING INCOMING AND OUTGOING 600V POWER CABLES IN FLEX CONDUIT TO LOW VOLTAGE WIREWAY.
 10. EXISTING 4 #8 SKV AIRFIELD LIGHTING CABLES IN FLEX CONDUIT TO HIGH VOLTAGE WIREWAY.
 11. NEW (2) 24 AWG SHIELDED TWISTED PAIRS IN 1" GRS CONDUIT.
 12. NEW 1" TX CONDUIT BODY WITH GASKET AND COVER.
 13. NEW 2 #8 SKV, L-824 TYPE C AIRFIELD LIGHTING CABLES IN 1" FLEX CONDUIT TO HIGH VOLTAGE WIREWAY.
 14. NEW 2 #10 THWN, 1 #12 GND, IN 3/4" FLEX CONDUIT TO LOW VOLTAGE WIREWAY FOR UPS POWER.
 15. NEW 2 #8 SKV, L-824 TYPE C CABLES IN 1" FLEX CONDUIT TO S-1 PLUG CUT-OUT.
 16. NEW 2 #10 THWN, 1 #12 GND, IN 1" GRS CONDUIT.



VAULT ALCMS RACK ELEVATION
NOT TO SCALE



EXISTING EQUIPMENT MOUNTING PLATE DETAIL
NOT TO SCALE



TYPICAL INTERFACE CONTROL AND IRMS PANEL (ACE-II) MOUNTING DETAIL
NOT TO SCALE

K:\Chicago\eehp\082908 1xy E:\Draw Sheets\10mks
FILE: 1xy-olcms_04.dwg
LAYOUT: Layout1
UPDATE BY: mtkatz
SURVEY BOOK #
DATE: Fri 4/1/11 9:26am
XREF DWG: tb.dwg
tbcont.dwg
tbcont_1xy.dwg

| REVISIONS | | |
|-----------|----|------|
| NUMBER | BY | DATE |
| | | |
| | | |
| | | |

0 1 2
THIS BAR IS EQUAL TO 2"
AT FULL SCALE (34X22).

**CHICAGO EXECUTIVE AIRPORT
WHEELING/PROSPECT HEIGHTS, ILLINOIS
CONSTRUCT PARTIAL PARALLEL TAXIWAY ECHO AND
PARTIAL OVERLAY OF TAXIWAY ECHO**

**ADDITIVE ALTERNATE #2
ALCMS - SHEET 4**

© Copyright CMT, Inc.
CMT
CRAWFORD, MURPHY & TILLY, INC.
CONSULTING ENGINEERS
License No. 184-000613

CHICAGO EXECUTIVE AIRPORT

| | |
|-------------------|-----------------|
| DESIGN BY: | AB |
| DRAWN BY: | JRO |
| CHECKED BY: | MLK |
| APPROVED BY: | DLP |
| DATE: | 04/22/11 |
| JOB No: | 08290-08 |
| ILLINOIS PROJECT: | PWK-3244 |
| A.I.P. PROJECT: | 3-17-0018-B32 |
| SHEET | 49 OF 49 SHEETS |