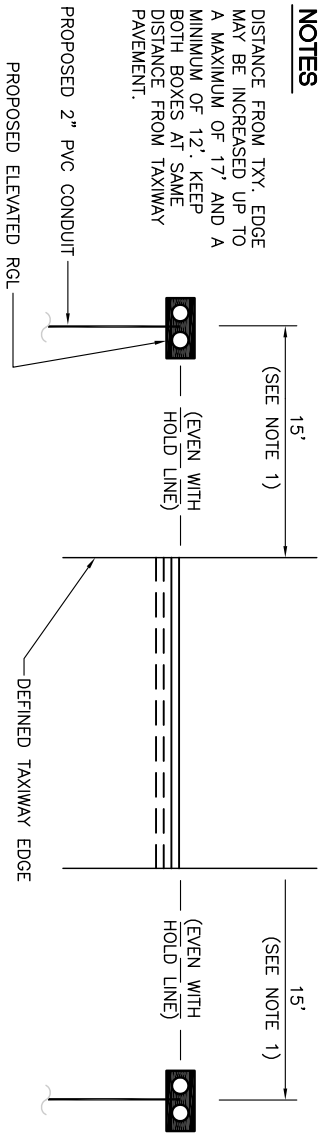


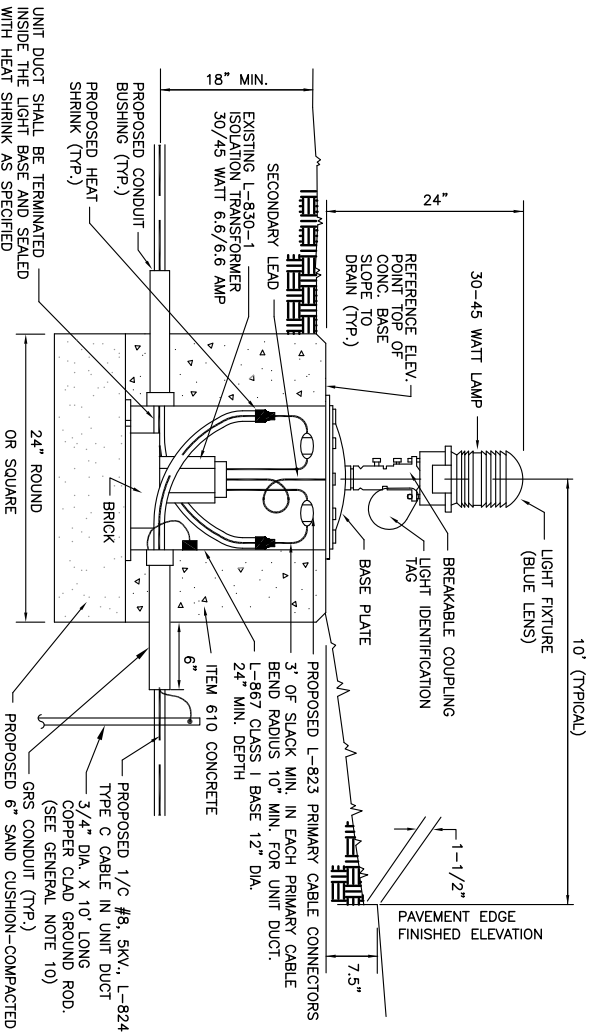
**INSTALLATION OF ELEVATED RGL (TYPICAL)**  
NOT TO SCALE

**NOTES**

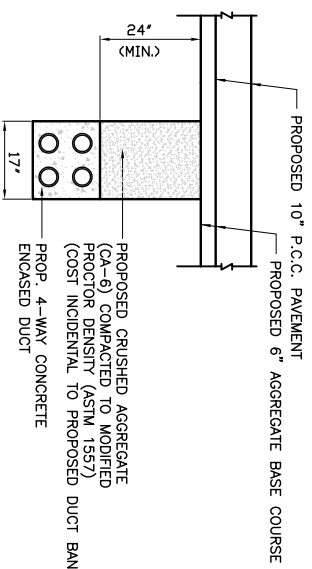
- DISTANCE FROM TXY. EDGE MAY BE INCREASED UP TO A MAXIMUM OF 17' AND A MINIMUM OF 12'. KEEP BOTH BOXES AT SAME DISTANCE FROM TAXIWAY PAVEMENT.



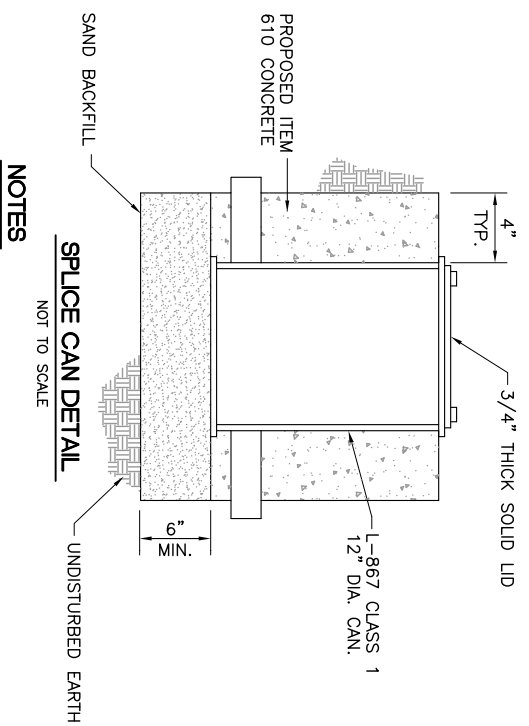
**ELEVATED RGL LAYOUT DETAIL (TYPICAL)**  
NOT TO SCALE



**PROPOSED BASE MOUNTED MEDIUM INTENSITY TAXIWAY LIGHT**  
NOT TO SCALE



**CONC ENCASED (4-WAY) ELECTRICAL DUCT BACKFILL**  
NO SCALE

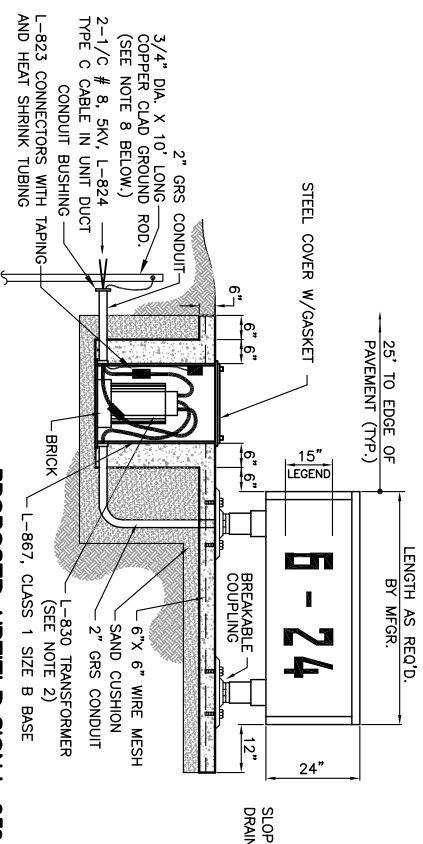


**NOTES**

- SOLID LID SHALL BOLT ON TO CAN.
- COST OF SPLICE CANS SHALL BE CONSIDERED INCIDENTAL TO THE REL INSTALLATION.

**GENERAL NOTES**

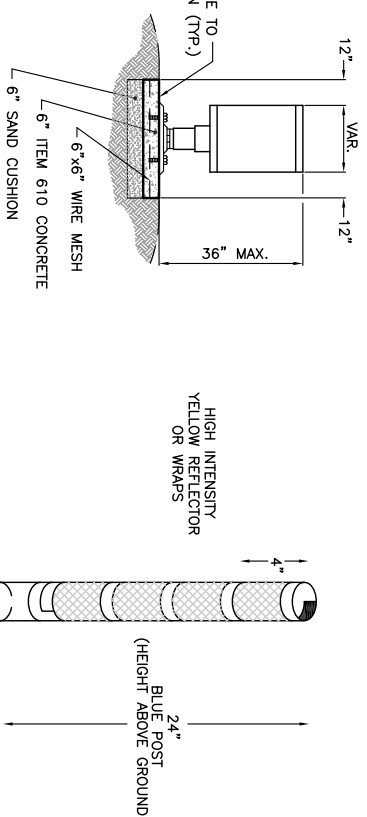
- TRANSFORMER HOLDER MAY BE ANY COMMERCIALY AVAILABLE BRICK.
- BREAKING GROOVE COUPLINGS SHALL NOT BE OVER 1" ABOVE GROUND LINE.
- ISOLATION TRANSFORMERS COME WITH A FACTORY INSTALLED PLUG (TYPE 1, CLASS A, STYLE 2) AND RECEPTACLE (TYPE 1, CLASS A, STYLE 9). A TYPE 1, CLASS B, STYLE 3 PLUG AND TYPE 1, CLASS B, STYLE 10 RECEPTACLE SHALL BE INSTALLED ON THE 1/C, No. 8, 5000 V., L-824 TYPE C CABLES FOR CONNECTION TO EACH TRANSFORMER.
- TO FURTHER REDUCE THE POSSIBILITY OF WATER/MOISTURE ENTRANCE INTO THE CONNECTOR BETWEEN THE CABLE AND THE FIELD ATTACHED CONNECTOR, IT IS REQUIRED THAT A HEAT SHRINKABLE TUBING WITH INTERNAL ADHESIVE BE APPLIED OVER THE ENTIRE CABLE CONNECTOR.
- ALL LIGHTS, CABLES AND TRANSFORMERS TO BE REMOVED SHALL REMAIN THE PROPERTY OF THE AIRPORT. AT THE DISCRETION OF THE AIRPORT MANAGER THE CONTRACTOR MAY BE REQUIRED TO DISPOSE OF THESE MATERIALS OFFSITE.
- DUCT MARKERS SHALL BE INSTALLED AT EVERY NEW DUCT AND AT EVERY EXISTING DUCT USED FOR THIS PROJECT.



**PROPOSED AIRFIELD SIGN L-858**  
NOT TO SCALE

**SIGNAGE NOTES**

- ALL SIGNS ARE LUMACURE 2-SIDED SIGNS BY STANDARD SIGNS OR APPROVED EQUAL.
- TRANSFORMER WATTAGE AS RECOMMENDED BY MANUFACTURER.
- LIGHTED SIGNS SHALL BE BASE MOUNTED ONLY.
- UNIT DUCT SHALL BE TERMINATED IN THE CAN AND SEALED TO THE CABLE WITH HEAT SHRINK AS SPECIFIED.
- THE NUMBER OF MODULES PER SIGN SHALL BE AS RECOMMENDED BY THE MANUFACTURER.
- CONTRACTOR SHALL SUBMIT DETAILED SHOP DRAWING INCLUDING SIGN, COLOR, SIZE AND PROPOSED LEGEND, IN ENOUGH DETAIL AND DETERMINE PROPOSED SPACING AND OTHER INFORMATION REQUIRED BY SPECIAL PROVISIONS, CONTRACTOR TO VERIFY PROPOSED SIGN LOCATIONS AND ORIENTATIONS WITH RESIDENT ENGINEER PRIOR TO INSTALLATION.
- INSTALL 1/C #8 AWG BARE COPPER GROUND JUMPER CONNECTED TO GROUND LUG INSIDE BASE CAN AND EXOTHERMICALLY WELDED TO GROUND ROD. INSTALL GROUND LUG FOR EXISTING CANS, IF REQUIRED.



**TAXIWAY RETROFLECTIVE MARKER DETAIL**  
NOT TO SCALE

K:\Chicago\eehp\0829008.txd E:\Draw\Sheets\Taxway  
FILE: txy-elec-dt-2.dwg  
LAYOUT: Layout1  
UPDATE BY: mikatz  
SURVEY BOOK #  
DATE: Fri 4/1/11 9:20am  
XREF DWG: tb.dwg  
tbcint.dwg  
tbcint\_txy.dwg

0 1 2  
THIS BAR IS EQUAL TO 2"  
AT FULL SCALE (3/4x22).

**CHICAGO EXECUTIVE AIRPORT  
WHEELING/PROSPECT HEIGHTS, ILLINOIS  
CONSTRUCT PARTIAL PARALLEL TAXIWAY ECHO AND  
PARTIAL OVERLAY OF TAXIWAY ECHO**

**ELECTRICAL DETAILS - SHEET 2**

© Copyright CMT, Inc.

**CMT**  
CRAWFORD, MURPHY & TILLY, INC.  
CONSULTING ENGINEERS  
License No. 184-000613

**CHICAGO EXECUTIVE AIRPORT**

REVISIONS	NUMBER	BY	DATE

DESIGN BY:	MLK
DRAWN BY:	JRO
CHECKED BY:	MLK
APPROVED BY:	DLP
DATE:	04/22/11
JOB No.:	08290-08

NOTE: RETROFLECTIVE MARKER SHALL BE UNIPAR, INC. EAFLEX OR APPROVED EQUAL.

ILLINOIS PROJECT: PWK-3244  
A.I.P. PROJECT: 3-17-0018-B32

SHEET 31 OF 49 SHEETS