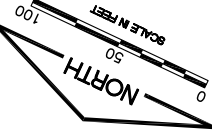


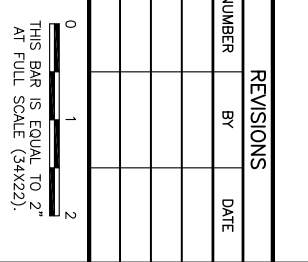
FOR LEGEND AND NOTES  
SEE PLAN AND PROFILE SHEET 2



K:\Chicago\eksp\082908\1xy\Draw Sheets\Drawn

FILE: 1xy-pp-e1-road.dwg  
LAYOUT: Layout1  
UPDATE BY: mkratz  
SURVEY BOOK #  
DATE: Fri 4/1/11 9:09am  
XREF DWG: tbcint\_1xy.dwg  
tbcprgrd.dwg  
echo-base.dwg

NUMBER	BY	DATE



**CHICAGO EXECUTIVE AIRPORT  
WHEELING/PROSPECT HEIGHTS, ILLINOIS  
CONSTRUCT PARTIAL PARALLEL TAXIWAY ECHO AND  
PARTIAL OVERLAY OF TAXIWAY ECHO**

**PLAN AND PROFILE  
SHEET 3**

Copyright CMT, Inc.

**CMT**  
CRAWFORD, MURPHY & TILLY, INC.  
CONSULTING ENGINEERS  
License No. 184-000613

**CHICAGO EXECUTIVE AIRPORT**

DESIGN BY:	AS
DRAWN BY:	JRO
CHECKED BY:	MLK
APPROVED BY:	DLP
DATE:	04/22/11
JOB No.:	08290-08

ILLINOIS PROJECT: PWK-3244  
A.I.P. PROJECT: 3-17-0018-B32

SHEET 16 OF 49 SHEETS