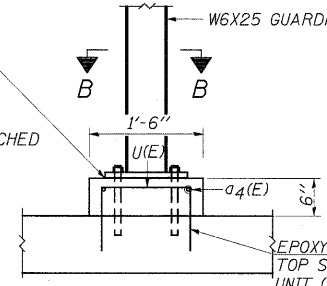
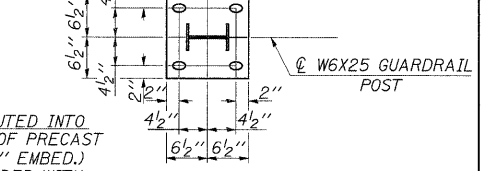


1/8" ELASTOMERIC NEOPRENE LEVELING PAD ACCORDING TO ARTICLE 1052.02 OF THE STANDARD SPECIFICATIONS. COST INCLUDED WITH "STEEL PLATE BEAM GUARDRAIL ATTACHED TO STRUCTURES".



SECTION A-A

P 13" X 1" X 1'-1" W/ 4 - 1 1/4" X 2" SLOTTED HOLES & 4 - 1" EPOXY GROUTED ANCHOR BOLTS (9" MIN. EMBED.) COST INCLUDED WITH "STEEL PLATE BEAM GUARDRAIL, ATTACHED TO STRUCTURES".



SECTION B-B

EPOXY GROUTED INTO TOP SLAB OF PRECAST UNIT (MIN 6" EMBED.) COST INCLUDED WITH "STEEL PLATE BEAM GUARDRAIL ATTACHED TO STRUCTURES".

FILE NAME =	USER NAME = colemm	DESIGNED -	REVISED -	STATE OF ILLINOIS DEPARTMENT OF TRANSPORTATION	GENERAL PLAN SN 028-7119		F.A. RTE. 869	SECTION *	COUNTY FRANKLIN	TOTAL SHEETS 299	SHEET NO. 159
cr\pw_work\pwsdot\colemm\dms43654\bill-culvert.dgn		DRAWN -	REVISED -		SCALE:	SHEET NO. OF SHEETS	STA. TO STA.	* (1-1,1,3,6)R-1,RS-3(1,3,6)B-2		CONTRACT NO. 98797	
		CHECKED -	REVISED -					ILLINOIS FED. AID PROJECT			
		DATE -	REVISED -								