

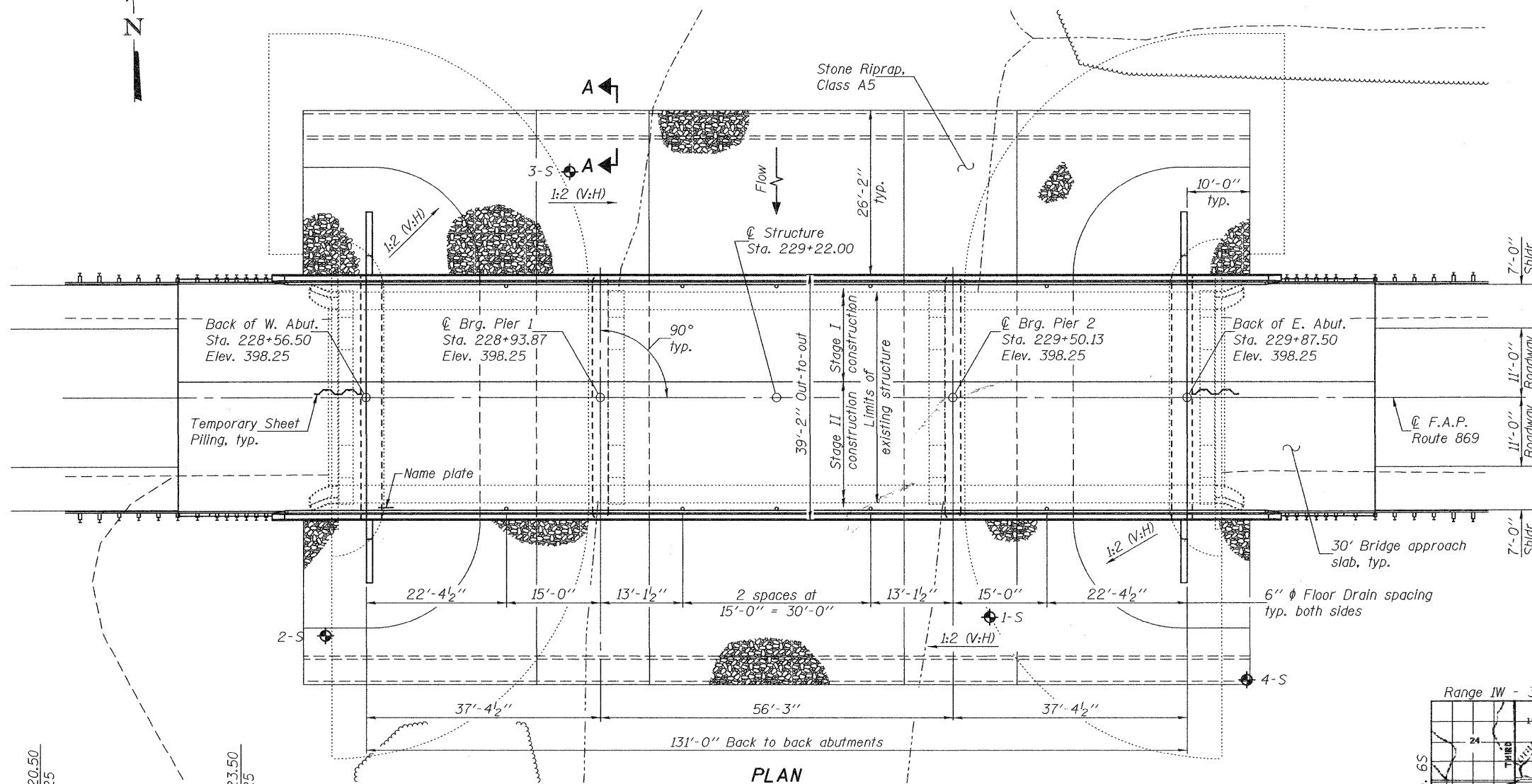
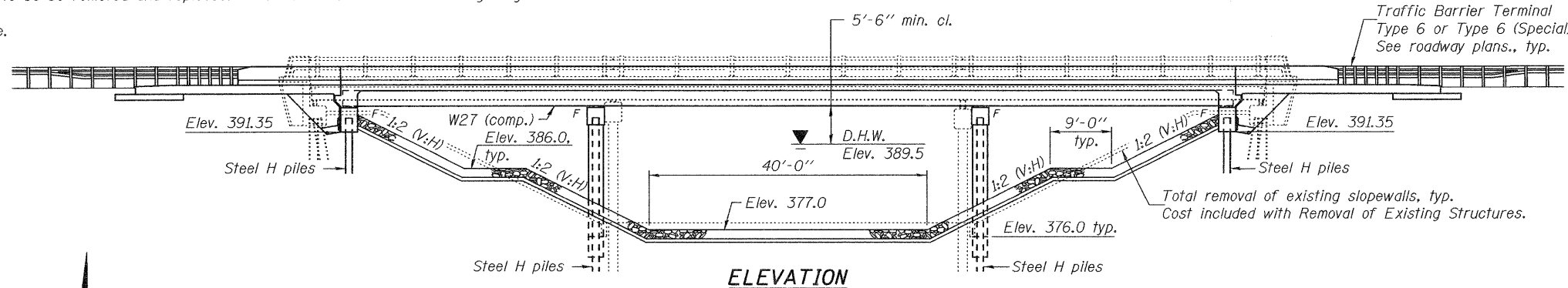
Bench Mark: Cut "□" on top of the NW wingwall of 028-0015; North side of Route 14 at Sta. 228+52 and 17 ft. left. Elev. 398.62.

Existing structure: Struct. No. 028-0015, originally built in 1955 as S.B.I. Rt. 14, Section 2B-2. The existing structure consists of a 3 span continuous steel superstructure supported by pile bent piers and abutments. 142'-0" back to back abutments and 33'-8" out to out of deck. Structure to be removed and replaced. Traffic to be maintained utilizing stage construction.

No salvage.

**INDEX OF SHEETS**

- 1 General Plan & Elevation
- 2 General Data
- 3 Stage Construction & Temporary Sheet Piling Details
- 4 Temporary Concrete Barrier Details
- 5-7 Top of Slab Elevations
- 8 Top of West Approach Slab Elevations
- 9 Top of East Approach Slab Elevations
- 10 Superstructure
- 11 Superstructure Details
- 12 Diaphragm Details
- 13-14 Bridge Approach Slab Details
- 15 Structural Steel
- 16 Bearing Details
- 17 West Abutment
- 18 East Abutment
- 19 Piers 1 & 2
- 20 Bar Splicer Assembly Details
- 21 Steel H Pile Details
- 22 Cantilever Forming Brackets for Superstructures with W27 Beams and Smaller
- 23-26 Soil Boring Logs



STATION 229+22.00  
 BUILT 20 BY  
 STATE OF ILLINOIS  
 F.A.P. RTE. 869 SEC. 6B-2  
 LOADING HL93  
 STRUCTURE NO. 073-0038

**NAME PLATE**

See Std. 515001

**LOADING HL-93**

Allow 50#/sq. ft. for future wearing surface.

**SEISMIC DATA**

Seismic Performance Zone (SPZ) = 3  
 Design Spectral Acceleration at 1.0 sec. ( $S_{D1}$ ) = 0.325 g  
 Design Spectral Acceleration at 0.2 sec. ( $S_{D5}$ ) = 0.759 g  
 Soil Site Class = D

**DESIGN SPECIFICATIONS**

2007 AASHTO LRFD Bridge Design Specifications with 2008 and 2009 Interims

**DESIGN STRESSES**

**FIELD UNITS**

$f'_c$  = 3,500 psi  
 $f_y$  = 60,000 psi (reinforcement)  
 $f_y$  = 50,000 psi (M270 Grade 50W)

**GENERAL PLAN & ELEVATION**

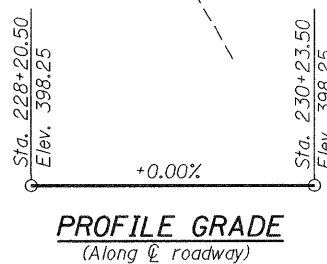
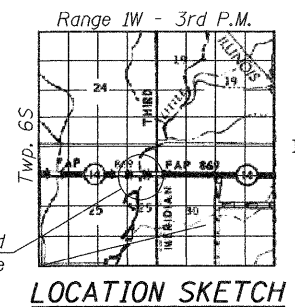
**IL. RTE. 14 OVER LITTLE MUDDY RIVER**

**F.A.P. RTE. 869 - SECTION 6B-2**

**PERRY/FRANKLIN COUNTY**

**STATION 229+22.00**

**STRUCTURE NO. 073-0038**



DESIGNED - <i>Jenica C. Forest</i>	EXAMINED - <i>Thomas J. ...</i>	DATE - 5/10/2011
CHECKED - <i>...</i>	PASSED - <i>...</i>	
DRAWN - h.t. duong		
CHECKED - JCF / NRB		

**STATE OF ILLINOIS  
 DEPARTMENT OF TRANSPORTATION**

**GENERAL PLAN & ELEVATION  
 STRUCTURE NO. 073-0038**

SHEET NO. 1 OF 26 SHEETS

F.A.P. RTE.	SECTION	COUNTY	TOTAL SHEETS	SHEET NO.
869	6B-2	*	299	131
CONTRACT NO. 98797			ILLINOIS FED. AID PROJECT	

\*PERRY/FRANKLIN