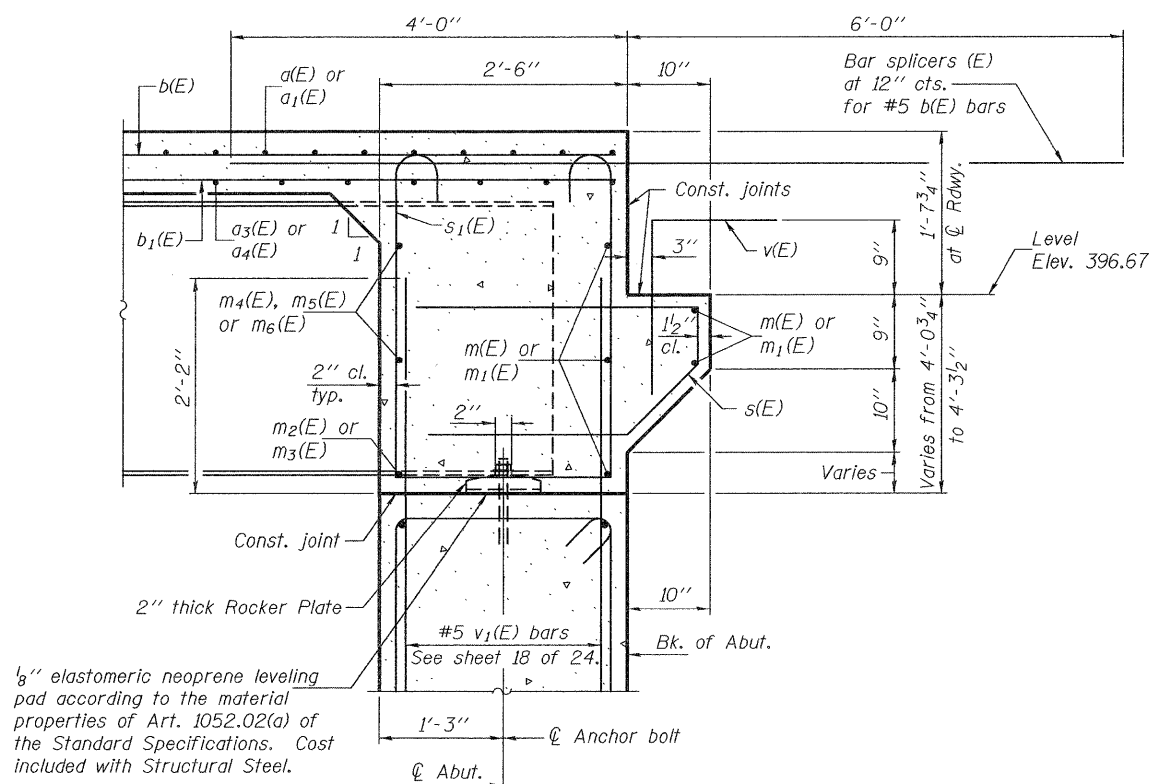


DIAPHRAGM ELEVATION AT EAST ABUTMENT

(Looking east - West abutment similar)

Notes: Reinforcement bars in diaphragm are billed with superstructure on sheet 12 of 24.
 Concrete in diaphragm is included with Concrete Superstructure on sheet 12 of 24.
 For details of bars s(E) & s₁(E) see sheet 12 of 24.
 For bar splicer (E) details see sheet 21 of 24.



SECTION A-A

MIN. BAR LAP

#6 bar = 3'-10"

DESIGNED - Michael D. Rolape
 CHECKED - Jessica C. Forrest
 DRAWN - h.t. duong
 CHECKED - MDR/JCF

EXAMINED
 PASSED
 Thomas Damagala
 ENGINEER OF BRIDGE DESIGN
 Carl Papp
 ENGINEER OF BRIDGES AND STRUCTURES

DATE - 5/10/2011

**STATE OF ILLINOIS
 DEPARTMENT OF TRANSPORTATION**

**DIAPHRAGM DETAILS
 STRUCTURE NO. 073-0036**

SHEET NO. 13 OF 24 SHEETS

F.A.P. RTE.	SECTION	COUNTY	TOTAL SHEETS	SHEET NO.
869	1B-2	PERRY	299	117
				CONTRACT NO. 98797
ILLINOIS FED. AID PROJECT				