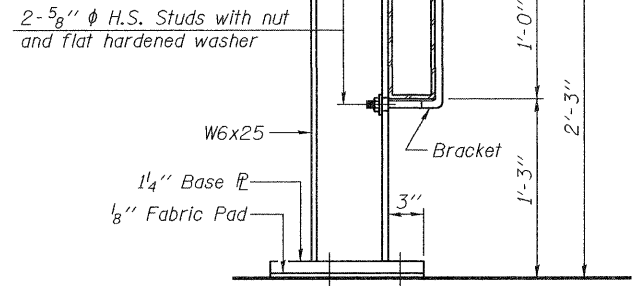
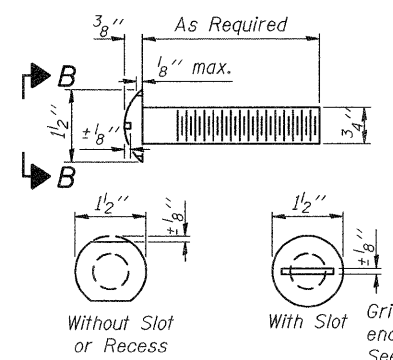


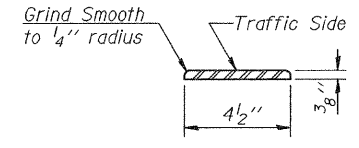
SECTION A-A



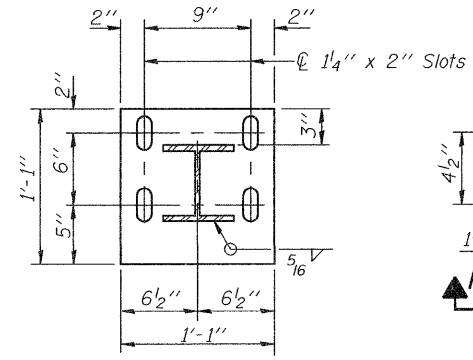
SECTION AT RAIL POST



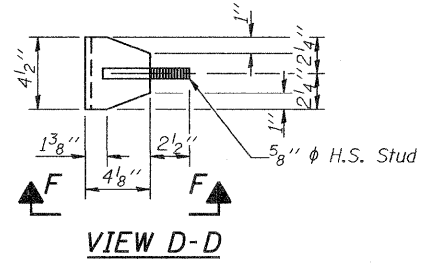
VIEW B-B  
ROUND HEAD BOLT



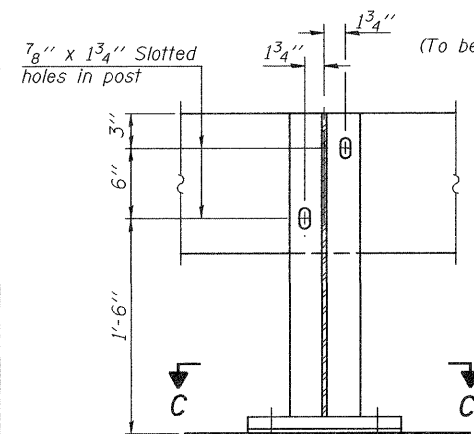
DETAIL A



SECTION C-C



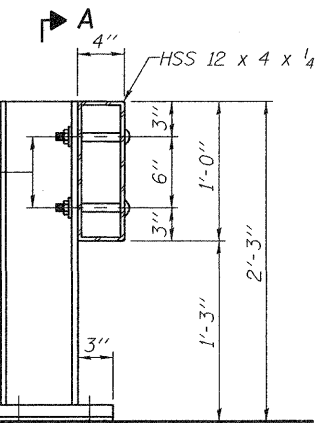
VIEW D-D



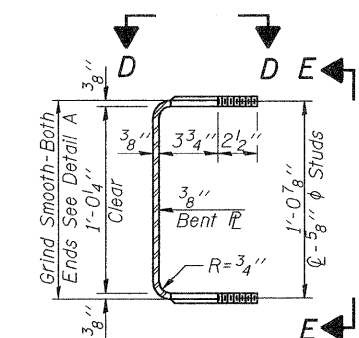
SECTION A-A

**ALTERNATE I**  
(To be used only for Roadway width  $\geq 12'$ )

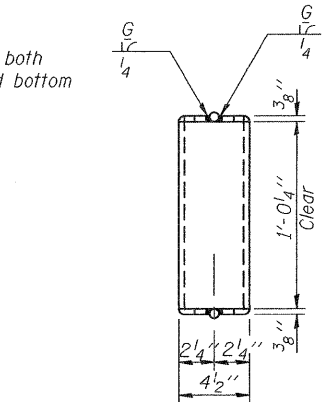
2-3/4"  $\phi$  x 6" Round Head Bolts (With slot or approved recess in head) with locknut & flat hardened washer. 7/8"  $\phi$  holes in hollow structural section may be drilled in the field.



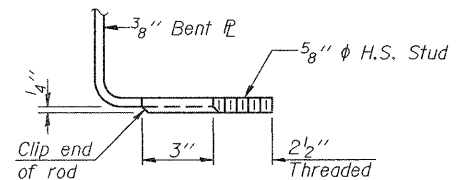
SECTION AT RAIL POST



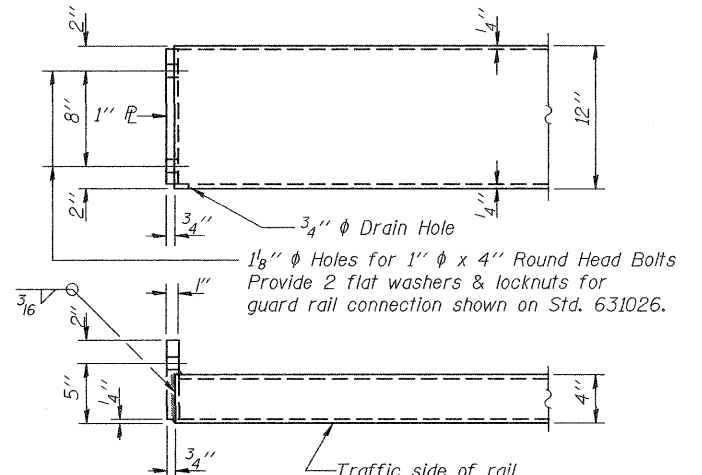
SECTION THRU BRACKET



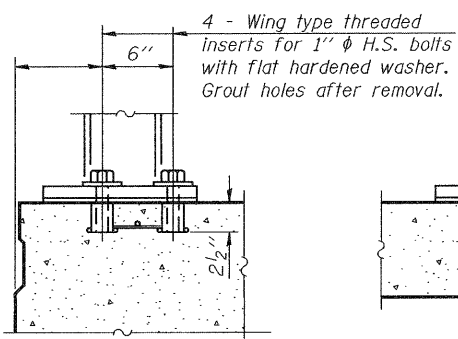
VIEW E-E



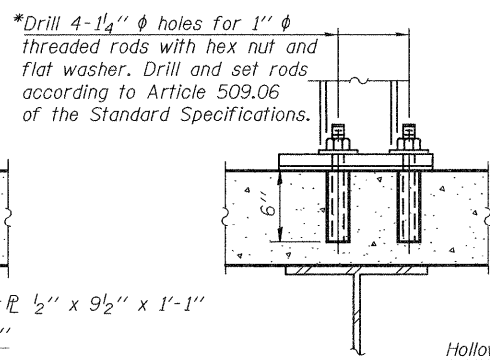
VIEW F-F



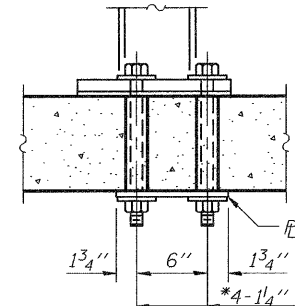
END OF RAIL DETAILS



P.P.C. DECK BEAMS

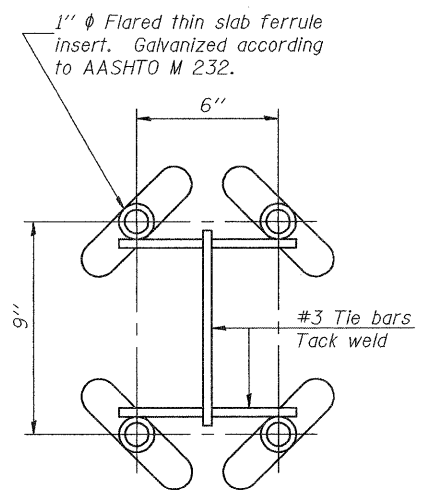


NEW & EXISTING DECKS

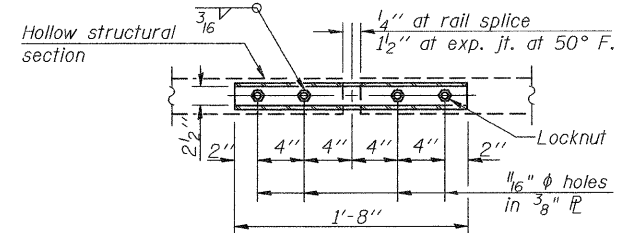


ANCHORAGE DETAILS

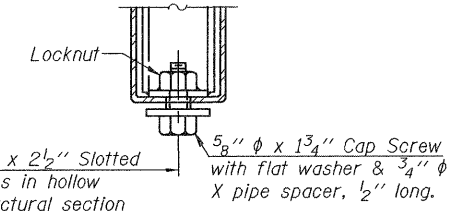
\*Drilled holes for existing deck.



INSERT DETAIL

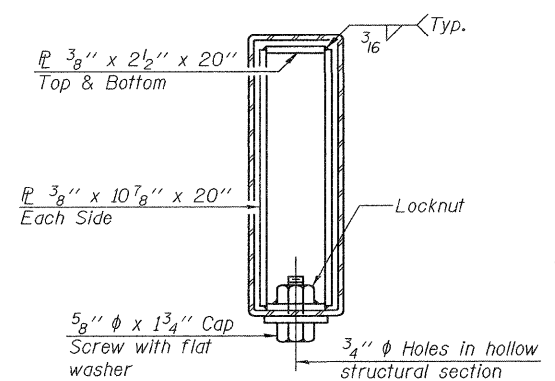


PLAN-BOTT. SPLICE PL  
TYPICAL



RAIL SPLICE CONNECTION  
AT EXPANSION JT.

**Notes:**  
The contact surfaces between post flange, rail and inside face of bracket for Alternate I shall be free of all lubricants. The nut for 5/8"  $\phi$  high strength studs used in Alternate I to connect bracket to post shall be tightened to a snug fit and given an additional one half turn.  
The quantity for steel railing (temporary) includes the length of bridge, bridge approach slabs and PCC connectors.



SECTION AT RAIL SPLICE

TEMPORARY BRIDGE RAIL POST SPACING

BILL OF MATERIAL

Item	Unit	Quantity
Steel Railing (Temporary)	Foot	188

R-25 7-1-10 (10'-9" Maximum Post Spacing)

DESIGNED - Michael D. Rolape  
CHECKED - Jessica C. Forrest  
DRAWN - h.f. duong  
CHECKED - MDR/JCF

EXAMINED - Thomas J. Demagala  
ENGINEER OF BRIDGE DESIGN  
PASSED - [Signature]  
ENGINEER OF BRIDGES AND STRUCTURES

DATE - 5/10/2011

STATE OF ILLINOIS  
DEPARTMENT OF TRANSPORTATION

STEEL RAILING (TEMPORARY)  
STRUCTURE NO. 073-0036

SHEET NO. 4 OF 24 SHEETS

F.A.P. RTE.	SECTION	COUNTY	TOTAL SHEETS	SHEET NO.
869	1B-2	PERRY	239	108

CONTRACT NO. 98797  
ILLINOIS FED. AID PROJECT