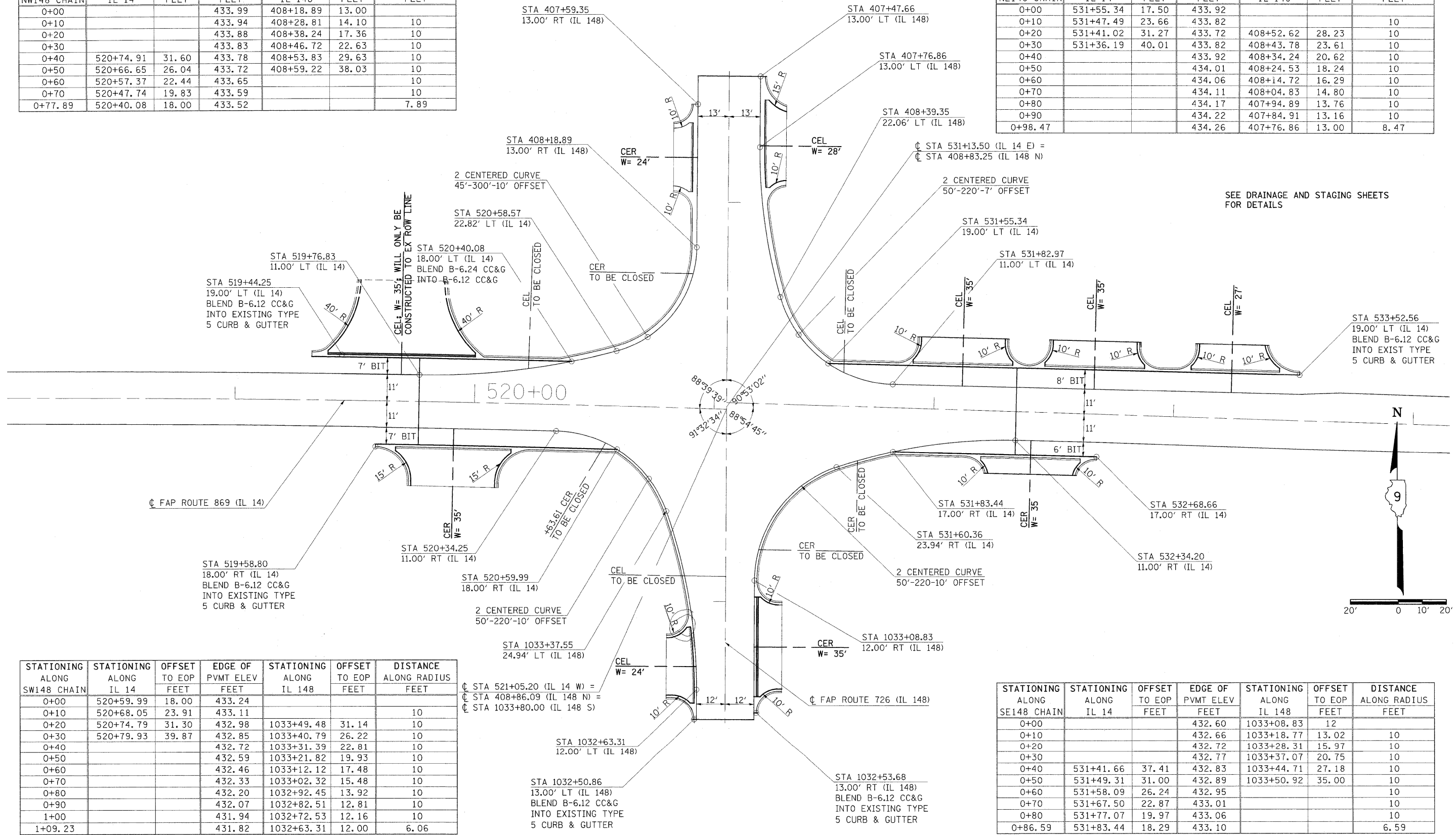


STATIONING ALONG NW148 CHAIN	STATIONING ALONG IL 14	OFFSET TO EOP FEET	EDGE OF PVMT ELEV FEET	STATIONING ALONG IL 148	OFFSET TO EOP FEET	DISTANCE ALONG RADIUS FEET
0+00			433.99	408+18.89	13.00	
0+10			433.94	408+28.81	14.10	10
0+20			433.88	408+38.24	17.36	10
0+30			433.83	408+46.72	22.63	10
0+40	520+74.91	31.60	433.78	408+53.83	29.63	10
0+50	520+66.65	26.04	433.72	408+59.22	38.03	10
0+60	520+57.37	22.44	433.65			10
0+70	520+47.74	19.83	433.59			10
0+77.89	520+40.08	18.00	433.52			7.89

STATIONING ALONG NE148 CHAIN	STATIONING ALONG IL 14	OFFSET TO EOP FEET	EDGE OF PVMT ELEV FEET	STATIONING ALONG IL 148	OFFSET TO EOP FEET	DISTANCE ALONG RADIUS FEET
0+00	531+55.34	17.50	433.92			
0+10	531+47.49	23.66	433.82			10
0+20	531+41.02	31.27	433.72	408+52.62	28.23	10
0+30	531+36.19	40.01	433.82	408+43.78	23.61	10
0+40			433.92	408+34.24	20.62	10
0+50			434.01	408+24.53	18.24	10
0+60			434.06	408+14.72	16.29	10
0+70			434.11	408+04.83	14.80	10
0+80			434.17	407+94.89	13.76	10
0+90			434.22	407+84.91	13.16	10
0+98.47			434.26	407+76.86	13.00	8.47



SEE DRAINAGE AND STAGING SHEETS FOR DETAILS

STATIONING ALONG SW148 CHAIN	STATIONING ALONG IL 14	OFFSET TO EOP FEET	EDGE OF PVMT ELEV FEET	STATIONING ALONG IL 148	OFFSET TO EOP FEET	DISTANCE ALONG RADIUS FEET
0+00	520+59.99	18.00	433.24			
0+10	520+68.05	23.91	433.11			10
0+20	520+74.79	31.30	432.98	1033+49.48	31.14	10
0+30	520+79.93	39.87	432.85	1033+40.79	26.22	10
0+40			432.72	1033+31.39	22.81	10
0+50			432.59	1033+21.82	19.93	10
0+60			432.46	1033+12.12	17.48	10
0+70			432.33	1033+02.32	15.48	10
0+80			432.20	1032+92.45	13.92	10
0+90			432.07	1032+82.51	12.81	10
1+00			431.94	1032+72.53	12.16	10
1+09.23			431.82	1032+63.31	12.00	6.06

STATIONING ALONG SE148 CHAIN	STATIONING ALONG IL 14	OFFSET TO EOP FEET	EDGE OF PVMT ELEV FEET	STATIONING ALONG IL 148	OFFSET TO EOP FEET	DISTANCE ALONG RADIUS FEET
0+00			432.60	1033+08.83	12	
0+10			432.66	1033+18.77	13.02	10
0+20			432.72	1033+28.31	15.97	10
0+30			432.77	1033+37.07	20.75	10
0+40	531+41.66	37.41	432.83	1033+44.71	27.18	10
0+50	531+49.31	31.00	432.89	1033+50.92	35.00	10
0+60	531+58.09	26.24	432.95			10
0+70	531+67.50	22.87	433.01			10
0+80	531+77.07	19.97	433.06			10
0+86.59	531+83.44	18.29	433.10			6.59