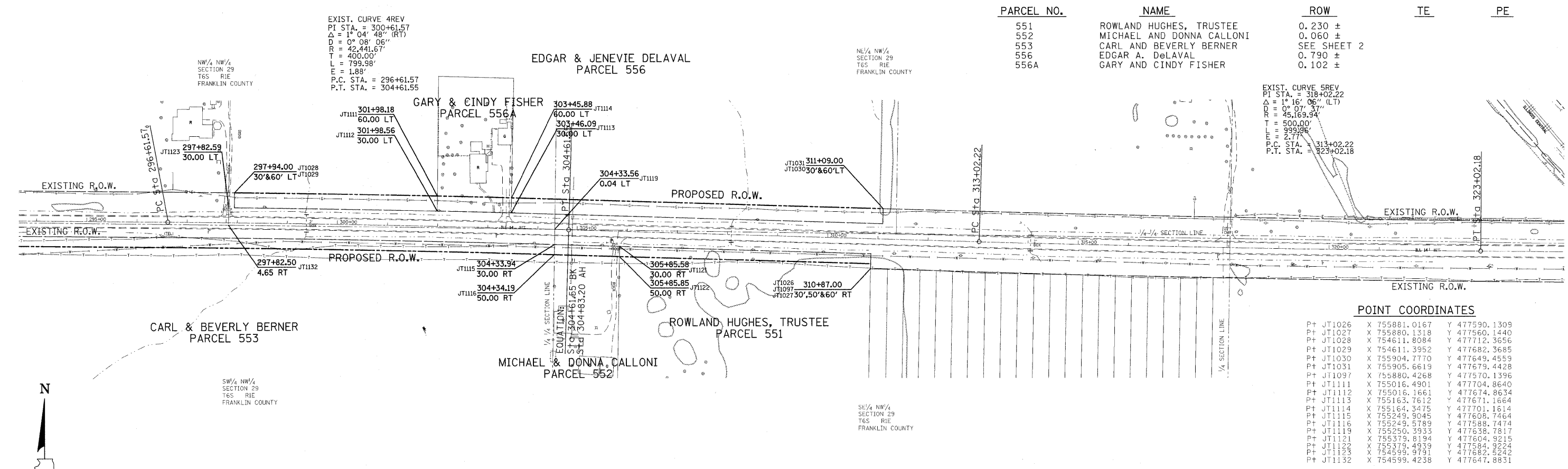


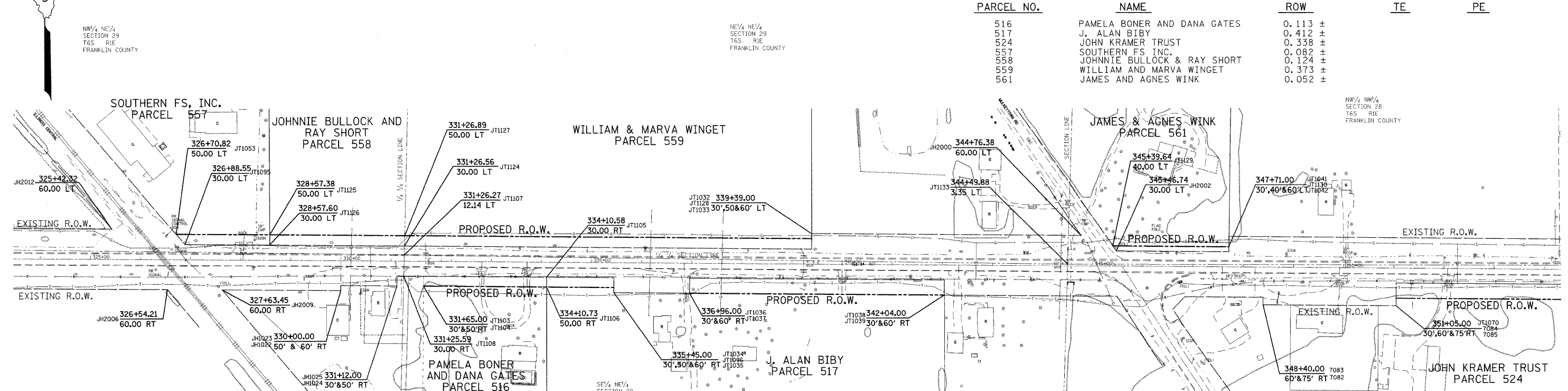
PARCEL NO.	NAME	ROW	TE	PE
551	ROWLAND HUGHES, TRUSTEE	0.230 ±		
552	MICHAEL AND DONNA CALLONI	0.060 ±		
553	CARL AND BEVERLY BERNER	SEE SHEET 2		
556	EDGAR A. DELAVAL	0.790 ±		
556A	GARY AND CINDY FISHER	0.102 ±		



POINT COORDINATES

POINT	X	Y
Pt JT1026	755881.0167	477590.1309
Pt JT1027	755880.1318	477560.1440
Pt JT1028	754611.8084	477712.3656
Pt JT1029	754611.3952	477682.3685
Pt JT1030	755904.7770	477649.4559
Pt JT1031	755905.6619	477679.4428
Pt JT1097	755880.4268	477570.1396
Pt JT1111	755016.4901	477704.8640
Pt JT1112	755016.1661	477674.8634
Pt JT1113	755163.7612	477671.1664
Pt JT1114	755164.3475	477701.1614
Pt JT1115	755249.9045	477608.7464
Pt JT1116	755249.5789	477588.7474
Pt JT1119	755250.3933	477638.7817
Pt JT1121	755379.8194	477604.9215
Pt JT1122	755379.4939	477584.9224
Pt JT1123	754599.9791	477682.5242
Pt JT1132	754599.4238	477647.8831

PARCEL NO.	NAME	ROW	TE	PE
516	PAMELA BONER AND DANA GATES	0.113 ±		
517	J. ALAN BIBY	0.412 ±		
524	JOHN KRAMER TRUST	0.338 ±		
557	SOUTHERN FS INC.	0.082 ±		
558	JOHNNIE BULLOCK & RAY SHORT	0.124 ±		
559	WILLIAM AND MARVA WINGET	0.373 ±		
561	JAMES AND AGNES WINK	0.052 ±		



POINT COORDINATES

POINT	X	Y
Pt JT1042	759565.7717	477607.1571
Pt JT1053	757465.7929	477642.6225
Pt JT1070	759899.3231	477544.6991
Pt JT1095	757483.3770	477622.4925
Pt JT1096	758339.2158	477536.1877
Pt JT1103	757959.3734	477558.9855
Pt JT1104	757959.2261	477538.9860
Pt JT1105	758204.9525	477557.1770
Pt JT1106	758204.9525	477537.1764
Pt JT1107	757920.9566	477601.4128
Pt JT1108	757919.9602	477559.2757
Pt JT1124	757921.3788	477619.2669
Pt JT1125	757652.3498	477641.2486
Pt JT1126	757652.4224	477621.2476
Pt JT1127	757921.8517	477639.2640
Pt JT1128	758733.9415	477633.2835
Pt JT1129	759334.4886	477618.8606
Pt JT1130	759565.8453	477617.1569
Pt JT1133	759244.4660	477582.8775
Pt JT1708	759899.1021	477514.7000

FILE NAME	USER NAME = headon	DESIGNED -	REVISED -
as:\pwork\pwork\headon\dms43654\1-9022\02sht.dgn		DRAWN -	REVISED -
PLOT SCALE = 100.0000' / IN.		CHECKED -	REVISED -
PLOT DATE = 4/5/2011		DATE -	REVISED -

**STATE OF ILLINOIS
DEPARTMENT OF TRANSPORTATION**

RIGHT OF WAY PLANS		F.A.P. RTE.	SECTION	COUNTY	TOTAL SHEETS	SHEET NO.
PROJECT D901803	JOB NO. R-99-022-02	869	(1-1,3,6R-1,RS-3)(1,3,6)B-2	*	299	98
SCALE: 100	SHEET NO. 3 OF 6 SHEETS	* FRANKLIN AND PERRY		CONTRACT NO. 98797		
STA. 294+00 TO STA. 354+00		FED. ROAD DIST. NO. [ILLINOIS] FED. AID PROJECT				