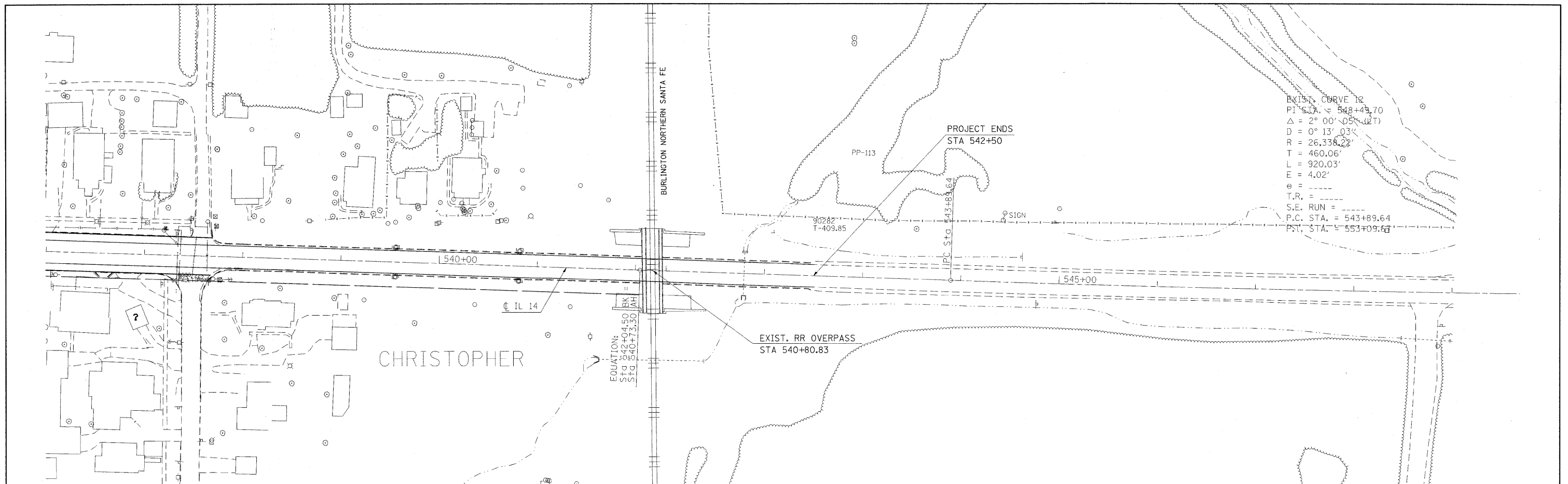
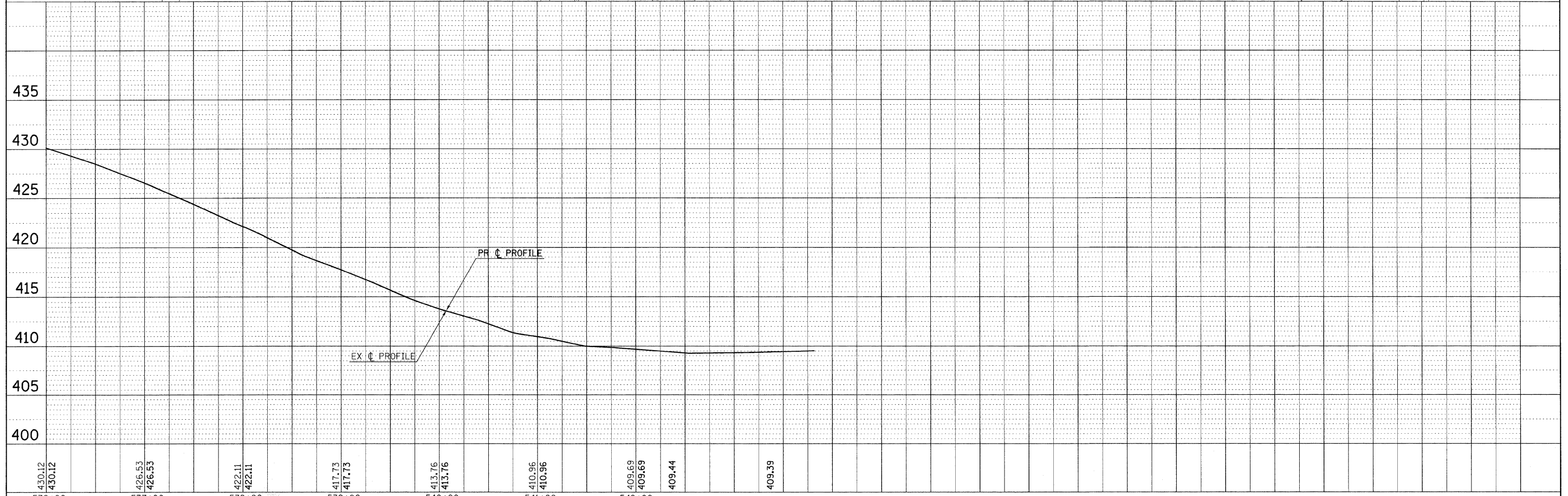


PLAN	DATE
NO.	
BY	
DATE	
REVISIONS	
NO.	
DATE	
BY	
DATE	

PROFILE	DATE
NO.	
BY	
DATE	
REVISIONS	
NO.	
DATE	
BY	
DATE	



EXIST. CURVE 12
 P.I. STA. = 548+49.70
 $\Delta = 2^\circ 00' 05''$ (RT)
 $D = 0^\circ 13' 03''$
 $R = 26,338.23'$
 $T = 460.06'$
 $L = 920.03'$
 $E = 4.02'$
 $e =$
 $T.R. =$
 $S.E. RUN =$
 $P.C. STA. = 543+89.64$
 $P.T. STA. = 553+09.64$



430.12 430.12	426.53 426.53	422.11 422.11	417.73 417.73	413.76 413.76	410.96 410.96	409.69 409.69	409.44	409.39
536+00	537+00	538+00	539+00	540+00	541+00	542+00		

FILE NAME =
 #FILE#

USER NAME = #USER#
 PLOT SCALE = #SCALE#
 PLOT DATE = #DATE#

DESIGNED -
 DRAWN -
 CHECKED -
 DATE -

REVISED -
 REVISED -
 REVISED -
 REVISED -

**STATE OF ILLINOIS
 DEPARTMENT OF TRANSPORTATION**

IL ROUTE 14 EROSION CONTROL SHEET

SCALE: 50 SHEET NO. OF SHEETS STA. 536+00 TO STA. 542+50

F.A.P. RTE.	SECTION	COUNTY	TOTAL SHEETS	SHEET NO.
869	1-1,1,3,6/R-1,RS-3;1,3,6/B-2		299	94
CONTRACT NO. 98797				