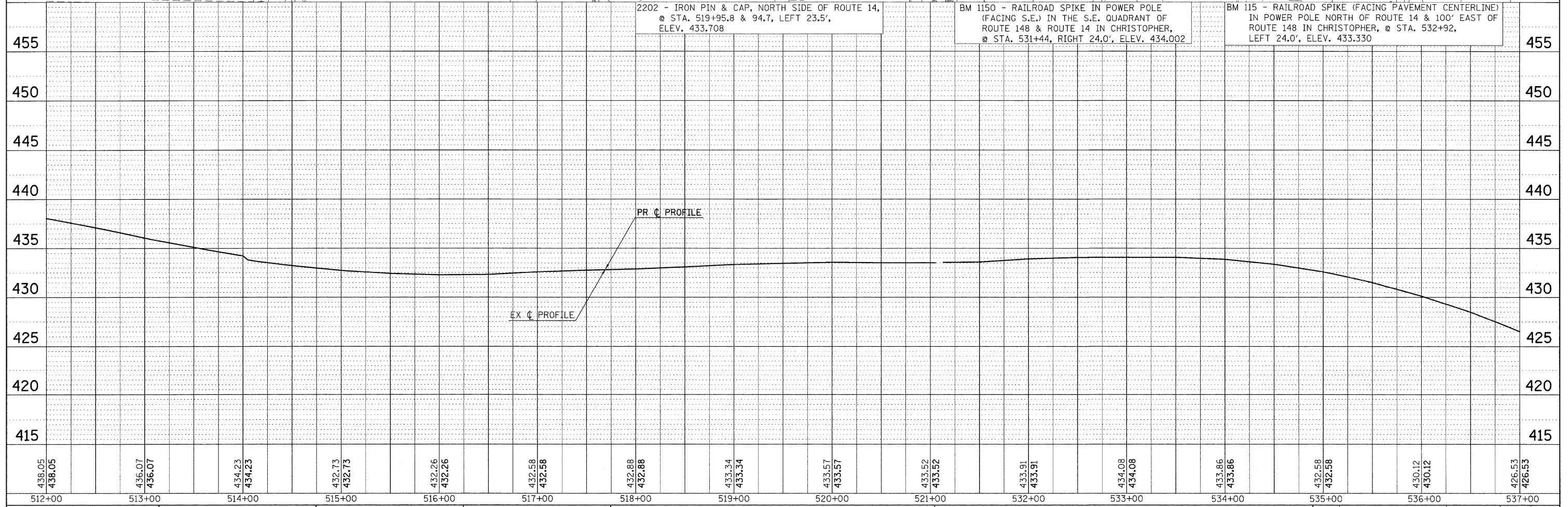
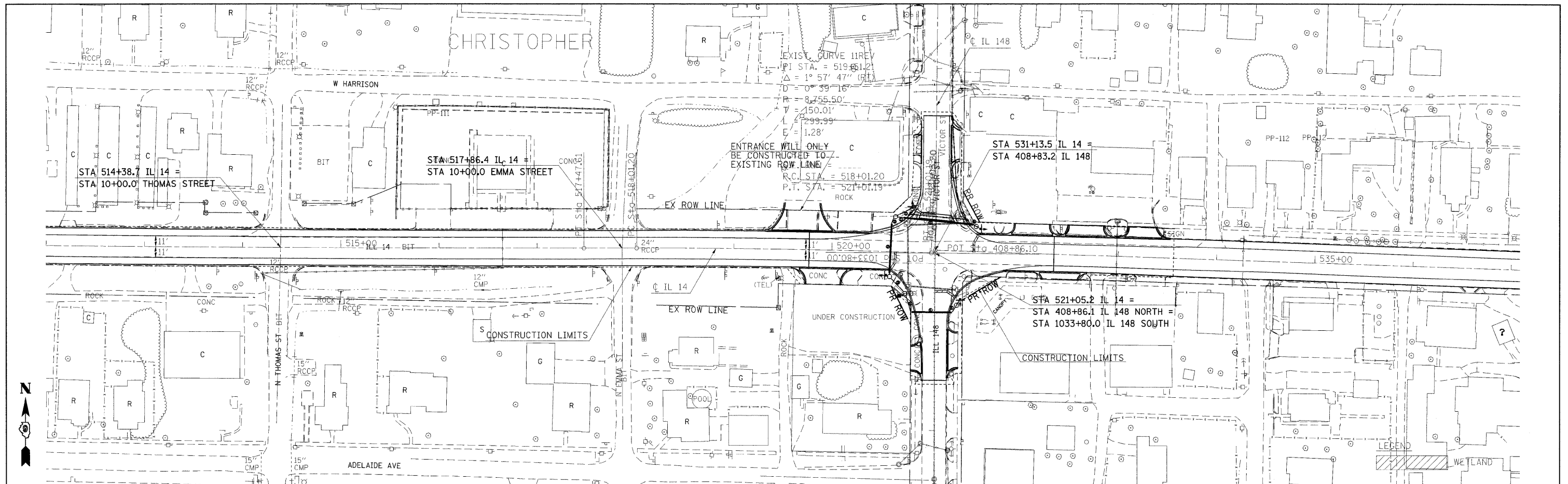


PLAN  
 SURVEYED  
 PLOTTED  
 ALIGNED  
 CHECKED  
 NOTE BOOK NO. \_\_\_\_\_  
 DATE \_\_\_\_\_

PROFILE  
 SURVEYED  
 PLOTTED  
 GRADES CHECKED  
 STRUCTURE NOTATIONS OK'D  
 NOTE BOOK NO. \_\_\_\_\_  
 DATE \_\_\_\_\_



2202 - IRON PIN & CAP, NORTH SIDE OF ROUTE 14, @ STA. 519+95.8 & 94.7, LEFT 23.5', ELEV. 433.708

BM 1150 - RAILROAD SPIKE IN POWER POLE (FACING S.E.) IN THE S.E. QUADRANT OF ROUTE 148 & ROUTE 14 IN CHRISTOPHER, @ STA. 531+44, RIGHT 24.0', ELEV. 434.002

BM 115 - RAILROAD SPIKE (FACING PAVEMENT CENTERLINE) IN POWER POLE NORTH OF ROUTE 14 & 100' EAST OF ROUTE 148 IN CHRISTOPHER, @ STA. 532+92, LEFT 24.0', ELEV. 433.330

438.05 438.05	436.07 436.07	434.23 434.23	432.73 432.73	432.26 432.26	432.58 432.58	432.88 432.88	433.34 433.34	433.57 433.57	433.52 433.52	433.91 433.91	434.08 434.08	433.86 433.86	432.58 432.58	430.12 430.12	426.53 426.53
------------------	------------------	------------------	------------------	------------------	------------------	------------------	------------------	------------------	------------------	------------------	------------------	------------------	------------------	------------------	------------------