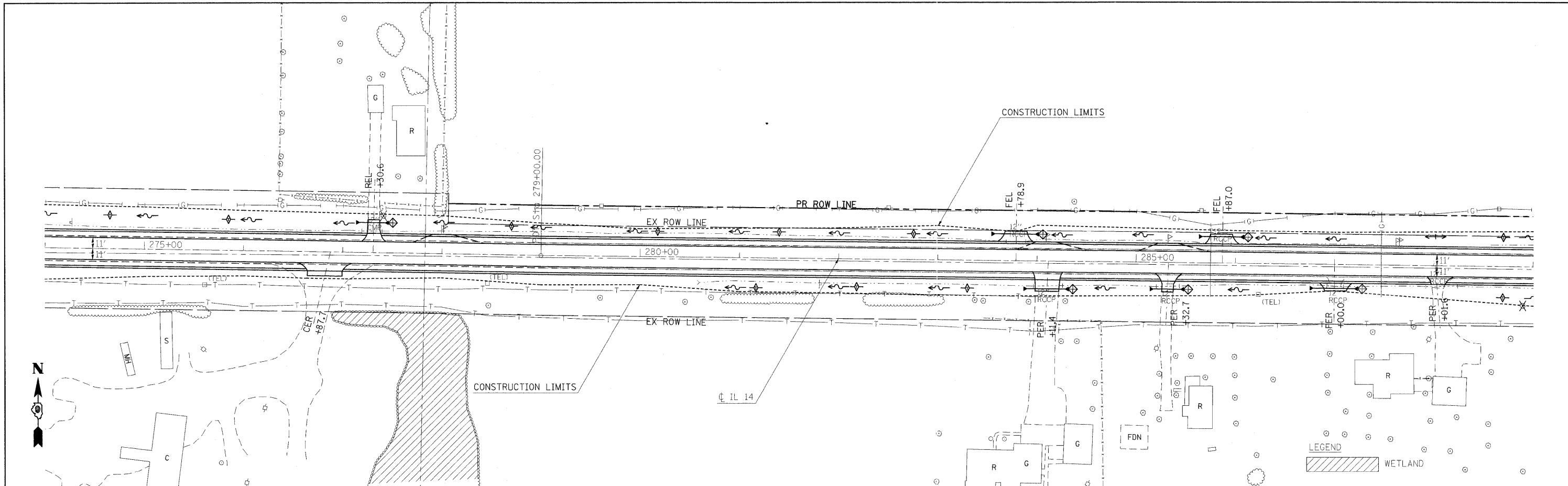
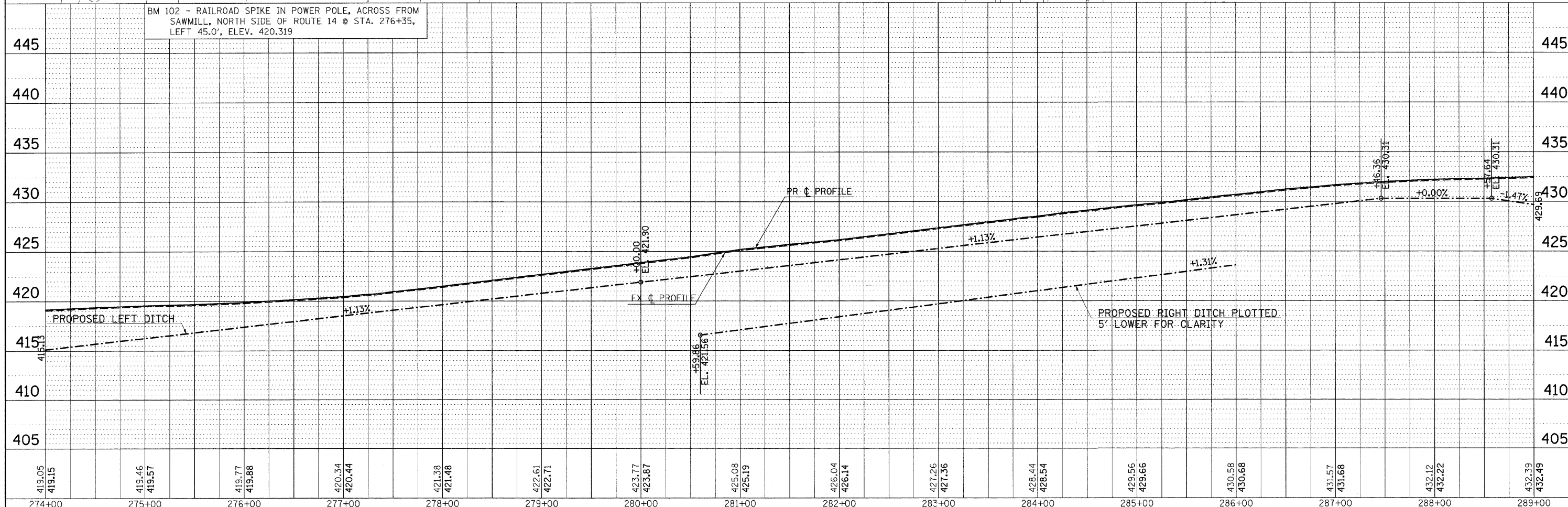


PLAN	DESIGNED	DATE
	PLOTTED	
	ALIGNMENT CHECKED	
	NOTE BOOK	
	NO.	
	CADD FILE NAME	

PROFILE	DESIGNED	DATE
	PLOTTED	
	GRADES CHECKED	
	NOTE BOOK	
	NO.	
	STRUCTURE NOTATIONS CHKD	



BM 102 - RAILROAD SPIKE IN POWER POLE, ACROSS FROM SAWMILL, NORTH SIDE OF ROUTE 14 @ STA. 276+35, LEFT 45.0', ELEV. 420.319



FILE NAME = #FILE#	USER NAME = #USER#	DESIGNED -	REVISED -	<b>STATE OF ILLINOIS</b> <b>DEPARTMENT OF TRANSPORTATION</b>	<b>IL ROUTE 14 EROSION CONTROL SHEET</b>	F.A.P. RTE.	SECTION	COUNTY	TOTAL SHEETS	SHEET NO.	
	PLOT SCALE = #SCALE#	DRAWN -	REVISED -			869	(1-1,1,3,6)R-1,RS-3;(1,3,6)B-2	*	299	76	
	PLOT DATE = #DATE#	CHECKED -	REVISED -			CONTRACT NO. 98797					
		DATE -	REVISED -			FED. ROAD DIST. NO. ILLINOIS FED. AID PROJECT					
SCALE: 50						SHEET NO. OF SHEETS		STA. 274+00 TO STA. 289+00			* FRANKLIN & PERRY COUNTIES