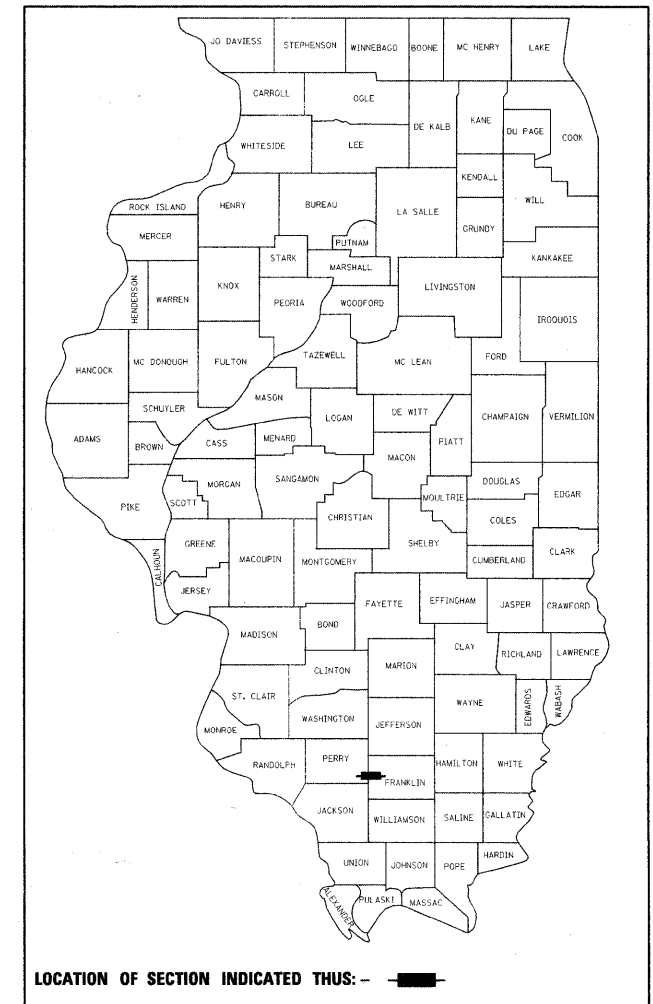


STATE OF ILLINOIS
DEPARTMENT OF TRANSPORTATION
DIVISION OF HIGHWAYS

F.A.P. RTE.	SECTION	COUNTY	TOTAL SHEETS	SHEET NO.
869	(1-1,1,3,6)R-1,RS-3;(1,3,6)B-2	ILLINOIS	299	1
*PERRY & FRANKLIN COUNTY			CONTRACT NO. 98797	

D-99-018-03



LOCATION OF SECTION INDICATED THUS: — ■ —

PROPOSED
HIGHWAY PLANS
IL ROUTE 14 (FAP 869)
SECTION (1-1,1,3,6)R-1,RS-3;(1,3,6)B-2
RESURFACING, INTERSECTION RECONSTRUCTION,
STRUCTURE REPLACEMENT
PERRY & FRANKLIN COUNTY
C-99-036-03
PROJECT ACFRF-ACF-0869(039)

FOR INDEX OF SHEETS, SEE SHEET NO.

TRAFFIC DATA

IL 14: 2012 ADT = 6830 WITH 6.1% TRUCKS
 2032 ADT = 8340 WITH 6.1% TRUCKS

STATION EQUATIONS

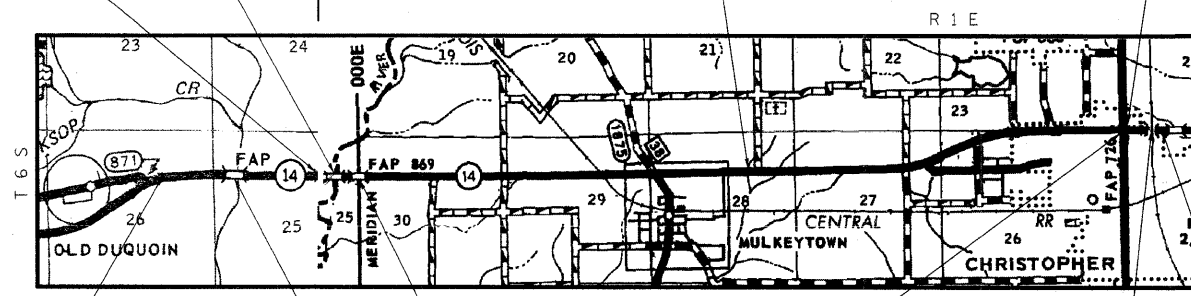
IL 14
 STA 179+31.94 BK = STA 176+16.87 AH
 STA 304+61.55 BK = STA 304+83.20 AH
 STA 542+04.50 BK = STA 540+73.30 AH
 IL 148
 STA 408+86.09 (148 N) = STA 1033+79.99 (148 S)

EXISTING STRUCTURE SN 028-0015
 PROPOSED STRUCTURE SN 073-0038
 STA 229+22 - BRIDGE

EXISTING STRUCTURE
 SN 073-2000
 TRIPLE 12'x7' BOX CULVERT

EXISTING STRUCTURE SN 028-7050
 PROPOSED STRUCTURE SN 028-7119
 STA 383+22, 9'x9' PRECAST BOX CULVERT
 WITH CAST IN PLACE HEADWALLS

IL 14 EAST BEGINS
 STA 531+13.5 (CL IL 14) =
 STA 408+83.2 (CL 148 N)



Perry County | Franklin County

IL 14 WEST ENDS
 STA 521+05.2 (CL IL 14) =
 STA 408+86.1 (CL 148 N) =
 STA 1033+80.0 (CL IL 148 S)

PROPOSED PROJECT BEGINS
 STATION 177+00 (CL IL 14)

EXISTING STRUCTURE
 SN 028-2005
 DOUBLE 10'x5' BOX CULVERT

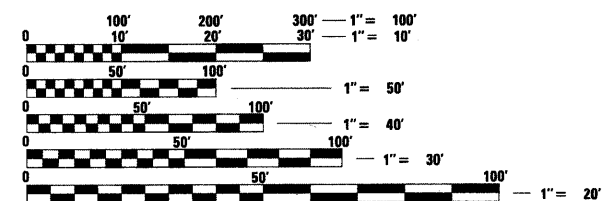
EXISTING STRUCTURE SN 073-0013
 PROPOSED STRUCTURE SN 073-0036
 STA 191+00 - BRIDGE

EXISTING BURLINGTON NORTHERN
 SANTA FE RAILROAD OVERPASS
 STA 540+10

PROPOSED PROJECT ENDS
 STATION 542+50 (CL IL 14)

TOWNSHIPS

DUQUOIN
 TYRONE



FULL SIZE PLANS HAVE BEEN PREPARED USING STANDARD ENGINEERING SCALES. REDUCED SIZED PLANS WILL NOT CONFORM TO STANDARD SCALES. IN MAKING MEASUREMENTS ON REDUCED PLANS, THE ABOVE SCALES MAY BE USED.

J.U.L.I.E.
 JOINT UTILITY LOCATION INFORMATION FOR EXCAVATION
 1-800-892-0123
 OR 811

PROJECT ENGINEER PAULA STOVER
PROJECT MANAGER CHARLES STEIN (618)-351-5210

CONTRACT NO. 98797

GROSS LENGTH = 35,651.25 FEET = 6.75 MILES
 NET LENGTH = 35,651.25 FEET = 6.75 MILES

DESIGN DESIGNATION: MINOR ARTERIAL (NON-URBAN)



APPROX. SCALE: 1" = 1 MILE

STATE OF ILLINOIS
DEPARTMENT OF TRANSPORTATION
DIVISION OF HIGHWAYS

SUBMITTED March 25 2011

Mary C. Dornie
 DEPUTY DIRECTOR OF HIGHWAYS, REGION ENGINEER

May 13 2011
Scott E. Stitt, P.E.
 acting ENGINEER OF DESIGN AND ENVIRONMENT

May 13 2011
Christine M. Reed
 DIRECTOR OF HIGHWAYS, CHIEF ENGINEER

PRINTED BY THE AUTHORITY
OF THE STATE OF ILLINOIS