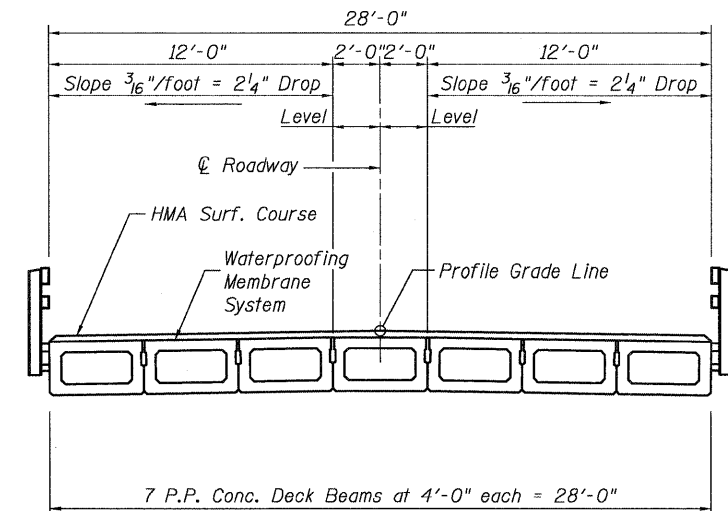
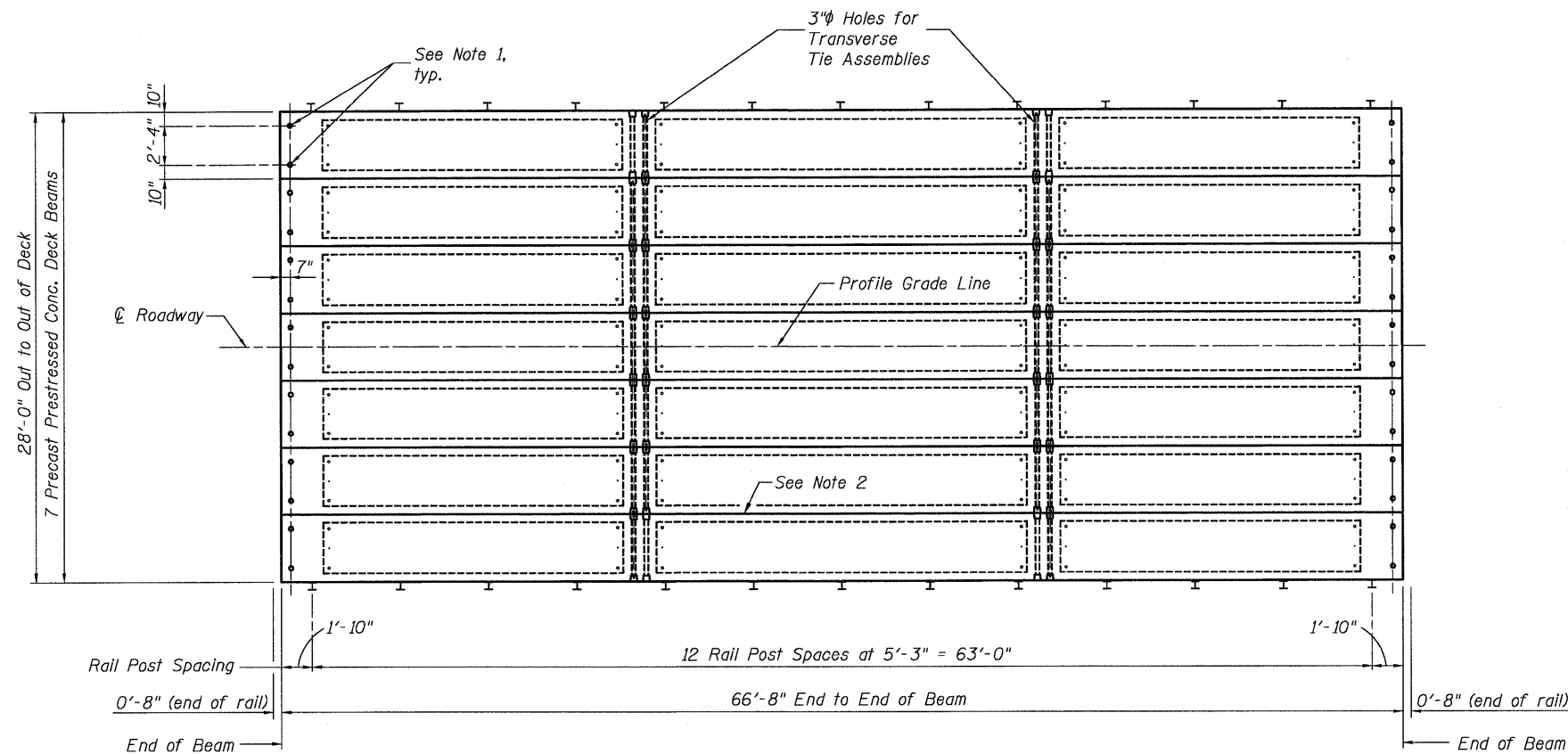


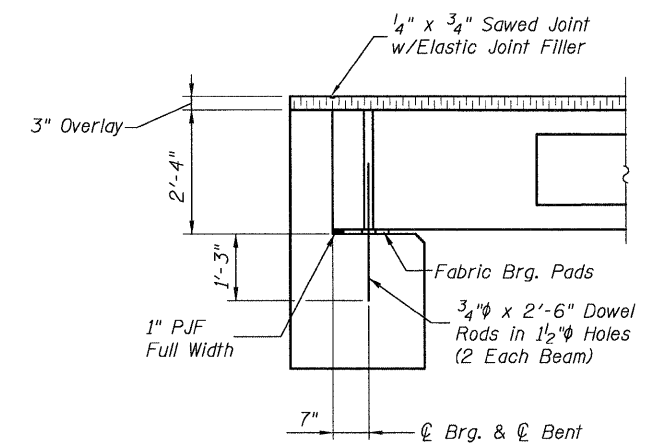
ELEVATION



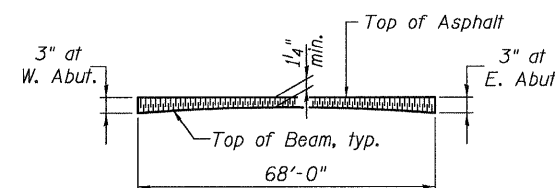
CROSS SECTION



PLAN



SECTION AT ABUTS.
(Along ϕ Beams)



PROFILE OF OVERLAY

NOTES

- After beams have been erected, holes shall be drilled into substructure and anchor dowels placed. Dowel holes shall be filled with non-shrink grout to top of beam and allowed to cure min. 24 hrs. prior to grouting the shear keys.
- Longitudinal keys shall be grouted.

BILL OF MATERIAL

| Item | Unit | Quantity |
|--|---------|----------|
| Portland Cement Mortar Fairing Course | Foot | 400 |
| Waterproofing Membrane System | Sq. Yd. | 208 |
| Hot-Mix Asphalt Surf. Cse., Mix "C", N70 | Ton | 35 |

FILE NAME =
h:\5789\88_sstr_5789.dgn

USER NAME = USERDESCR.
PLOT SCALE = 5.0000' / IN.
PLOT DATE = 4/12/2011

DESIGNED - B.I.B.
CHECKED - L.D.G.
DRAWN - K.H.L.
CHECKED - B.G.H.

REVISED -
REVISED -
REVISED -
REVISED -

**STATE OF ILLINOIS
DEPARTMENT OF TRANSPORTATION**

SUPERSTRUCTURE

SHEET NO. 2 OF 8 SHEETS

| F.A.S.1 RTE. | SECTION | COUNTY | TOTAL SHEETS | SHEET NO. |
|---------------------------|-------------------------------|--------------|--------------------|--------------|
| 782 | 07-00084-00-BR/07-00088-00-BR | BOND/CLINTON | 19 | 8 |
| S.N. 003-3052 | | | CONTRACT NO. 97469 | |
| ILLINOIS FED. AID PROJECT | | | | |