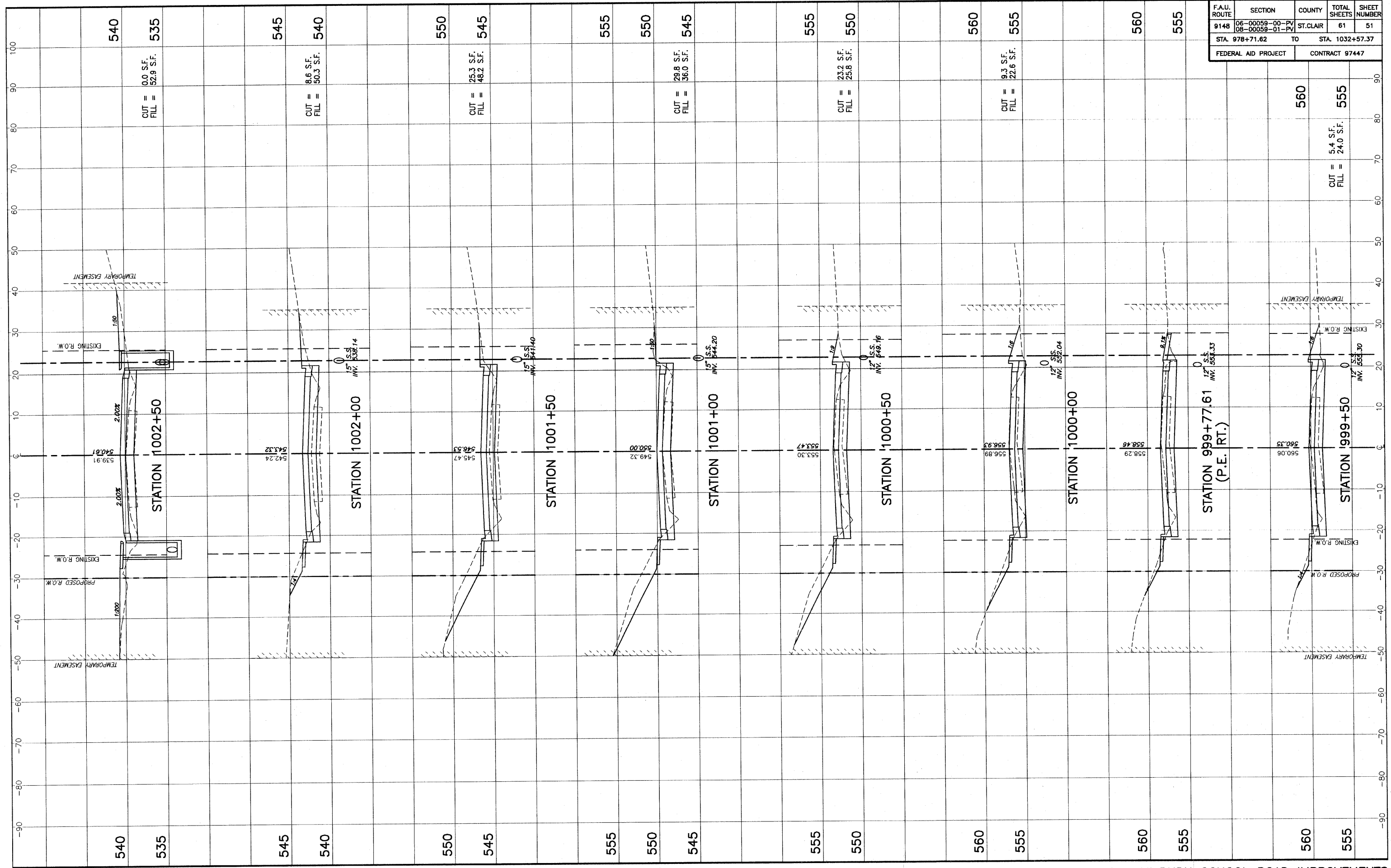


F.A.U. ROUTE	SECTION	COUNTY	TOTAL SHEETS	SHEET NUMBER
9148	06-00059-00-PV 08-00059-01-PV	ST. CLAIR	61	51
STA. 978+71.62		TO	STA. 1032+57.37	
FEDERAL AID PROJECT			CONTRACT 97447	



540  
535  
CUT = 0.0 S.F.  
FILL = 52.9 S.F.

545  
540  
CUT = 8.6 S.F.  
FILL = 50.3 S.F.

550  
545  
CUT = 25.3 S.F.  
FILL = 48.2 S.F.

555  
550  
545  
CUT = 29.8 S.F.  
FILL = 36.0 S.F.

555  
550  
555  
CUT = 23.2 S.F.  
FILL = 25.8 S.F.

560  
555  
CUT = 9.3 S.F.  
FILL = 22.6 S.F.

560  
555  
CUT = 5.4 S.F.  
FILL = 24.0 S.F.

560  
555

STA. 999+50 - STA. 1002+50 CROSS SECTIONS MILBURN SCHOOL ROAD IMPROVEMENTS ST. CLAIR COUNTY, ILLINOIS

E:\V008 - O'Fallon - Milburn School Road - Phase 2\Drawings\Sheet\CrossSections\0008\_45\_01\_Xsections.dwg, 8/23/2010 10:33:06 AM, Plotted by N.A.L.