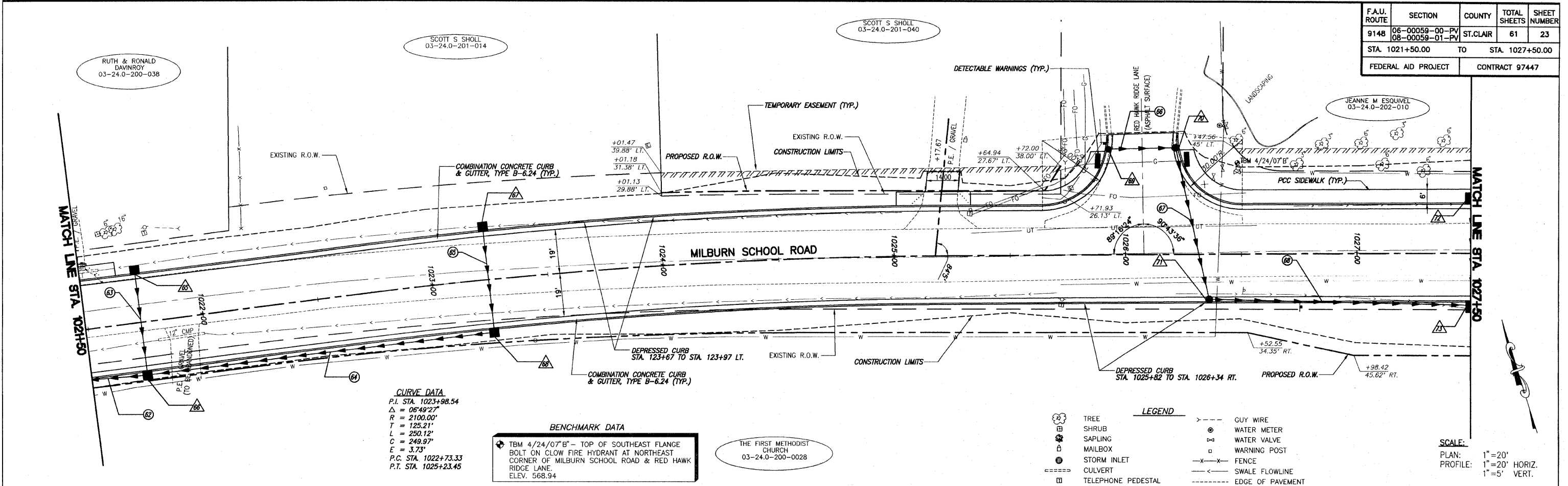


F.A.U. ROUTE	SECTION	COUNTY	TOTAL SHEETS	SHEET NUMBER
9148	06-00059-00-PV 08-00059-01-PV	ST. CLAIR	61	23
STA. 1021+50.00		TO		STA. 1027+50.00
FEDERAL AID PROJECT			CONTRACT 97447	



**CURVE DATA**  
 P.I. STA. 1023+98.54  
 $\Delta = 06^{\circ}49'27''$   
 $R = 2100.00'$   
 $T = 125.21'$   
 $L = 250.12'$   
 $C = 249.97'$   
 $E = 3.73'$   
 P.C. STA. 1022+73.33  
 P.T. STA. 1025+23.45

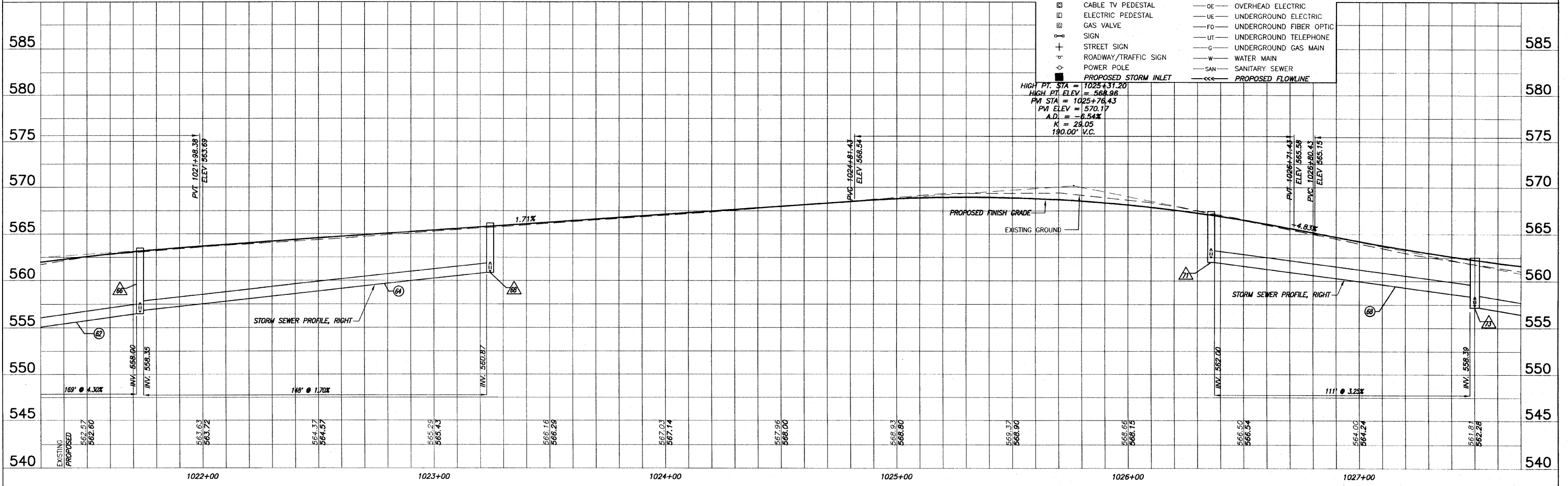
**BENCHMARK DATA**  
 TBM 4/24/07' B' - TOP OF SOUTHEAST FLANGE BOLT ON CLOW FIRE HYDRANT AT NORTHEAST CORNER OF MILBURN SCHOOL ROAD & RED HAWK RIDGE LANE. ELEV. 568.94

THE FIRST METHODIST CHURCH  
 03-24.0-200-0028

**LEGEND**

	TREE		GUY WIRE
	SHRUB		WATER METER
	SAPLING		WATER VALVE
	MAILBOX		WARNING POST
	STORM INLET		FENCE
	CULVERT		SWALE FLOWLINE
	TELEPHONE PEDESTAL		EDGE OF PAVEMENT
	CABLE TV PEDESTAL		OVERHEAD ELECTRIC
	ELECTRIC PEDESTAL		UNDERGROUND ELECTRIC
	GAS VALVE		UNDERGROUND FIBER OPTIC
	SIGN		UNDERGROUND TELEPHONE
	STREET SIGN		UNDERGROUND GAS MAIN
	ROADWAY/TRAFFIC SIGN		WATER MAIN
	POWER POLE		SANITARY SEWER
	PROPOSED STORM INLET		PROPOSED FLOWLINE

**SCALE:**  
 PLAN: 1"=20'  
 PROFILE: 1"=20' HORIZ.  
 1"=5' VERT.



ROADWAY PLAN AND PROFILE MILBURN SCHOOL ROAD IMPROVEMENTS  
 ST. CLAIR COUNTY, ILLINOIS