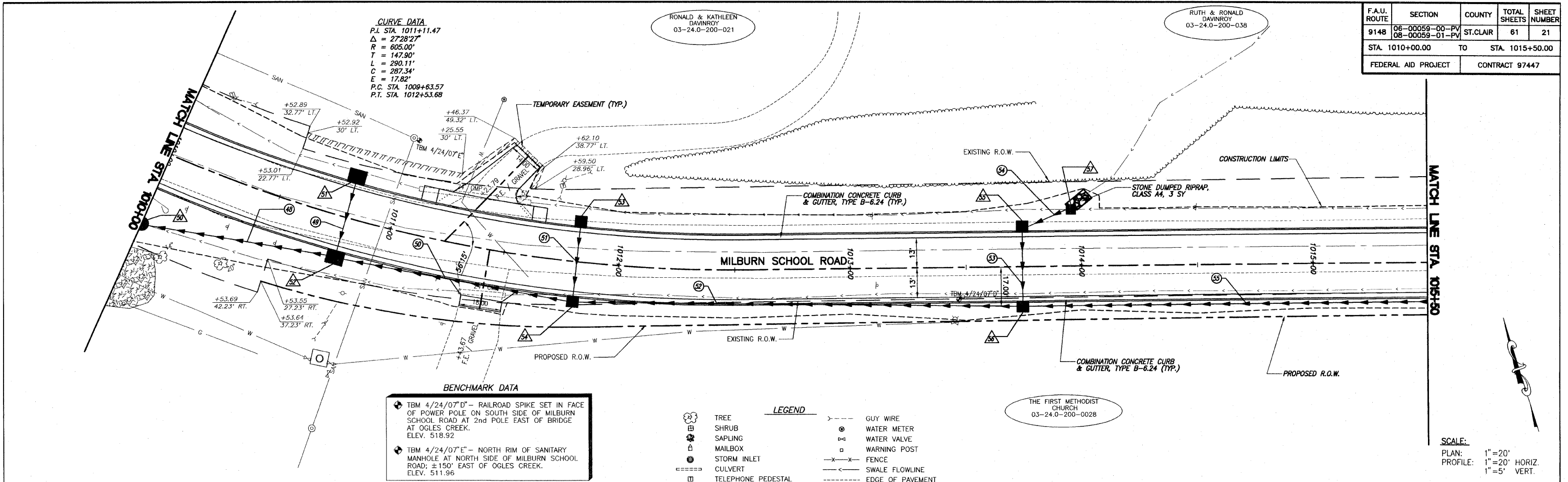


| F.A.U. ROUTE | SECTION | COUNTY | TOTAL SHEETS | SHEET NUMBER |
|---------------------|----------------------------------|-----------|----------------|-----------------|
| 9148 | 06-00059-00-PV 08-00059-01-PV | ST. CLAIR | 61 | 21 |
| STA. 1010+00.00 | | TO | | STA. 1015+50.00 |
| FEDERAL AID PROJECT | | | CONTRACT 97447 | |

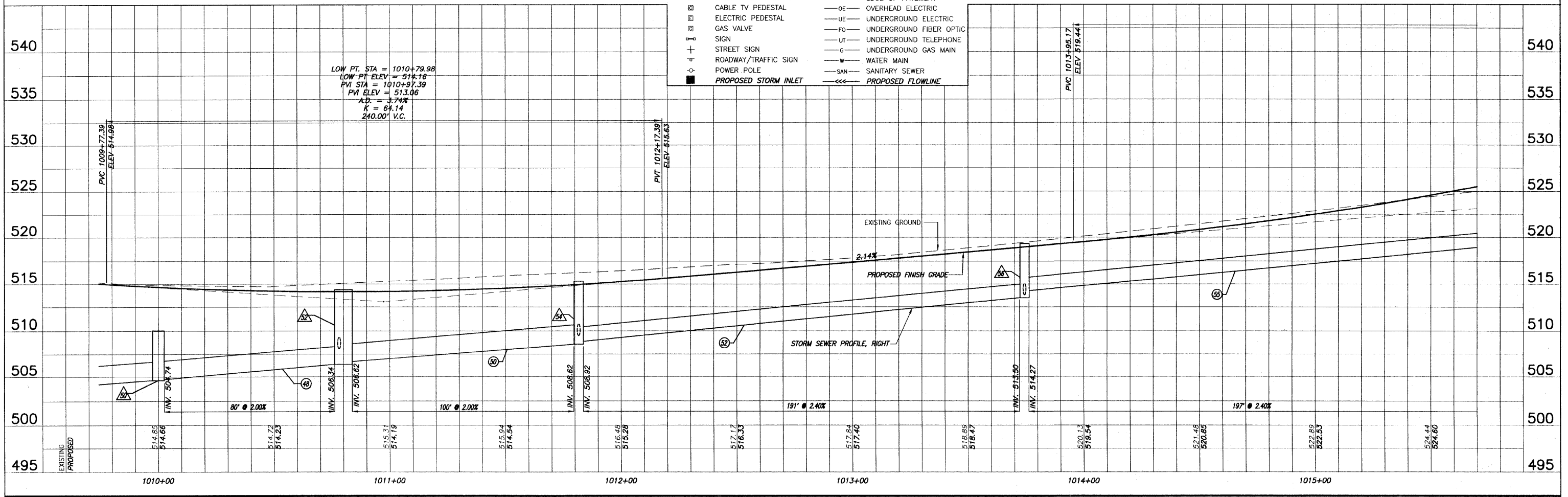


CURVE DATA
 P.I. STA. 1011+11.47
 $\Delta = 27.28' 27''$
 $R = 605.00'$
 $T = 147.90'$
 $L = 290.11'$
 $C = 287.34'$
 $E = 17.82'$
 P.C. STA. 1009+83.57
 P.T. STA. 1012+53.68

BENCHMARK DATA

- TBM 4/24/07'D" - RAILROAD SPIKE SET IN FACE OF POWER POLE ON SOUTH SIDE OF MILBURN SCHOOL ROAD AT 2nd POLE EAST OF BRIDGE AT OGLES CREEK. ELEV. 518.92
- TBM 4/24/07"E" - NORTH RIM OF SANITARY MANHOLE AT NORTH SIDE OF MILBURN SCHOOL ROAD; ±150' EAST OF OGLES CREEK. ELEV. 511.96

- LEGEND**
- TREE
 - SHRUB
 - SAPLING
 - MAILBOX
 - STORM INLET
 - CULVERT
 - TELEPHONE PEDESTAL
 - CABLE TV PEDESTAL
 - ELECTRIC PEDESTAL
 - GAS VALVE
 - SIGN
 - STREET SIGN
 - ROADWAY/TRAFFIC SIGN
 - POWER POLE
 - PROPOSED STORM INLET
 - GUY WIRE
 - WATER METER
 - WATER VALVE
 - WARNING POST
 - FENCE
 - SWALE FLOWLINE
 - EDGE OF PAVEMENT
 - OVERHEAD ELECTRIC
 - UNDERGROUND ELECTRIC
 - UNDERGROUND FIBER OPTIC
 - UNDERGROUND TELEPHONE
 - UNDERGROUND GAS MAIN
 - WATER MAIN
 - SANITARY SEWER
 - PROPOSED FLOWLINE



ROADWAY PLAN AND PROFILE MILBURN SCHOOL ROAD IMPROVEMENTS ST. CLAIR COUNTY, ILLINOIS