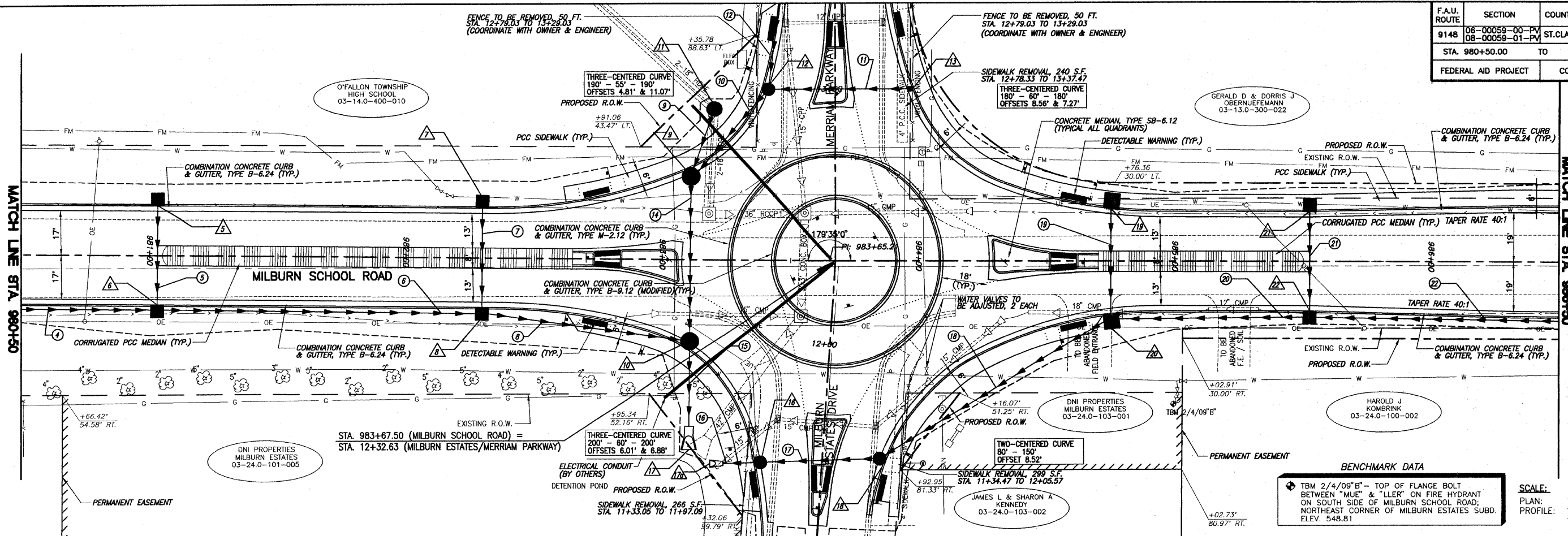


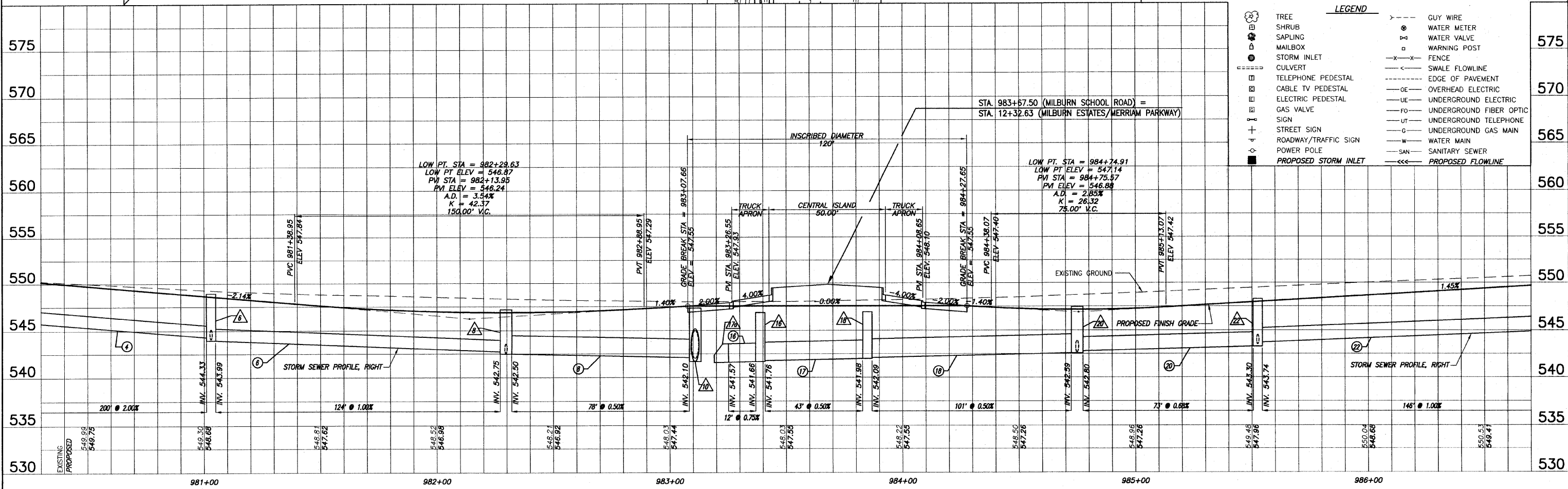
F.A.U. ROUTE	SECTION	COUNTY	TOTAL SHEETS	SHEET NUMBER
9148	06-00059-00-PV 08-00059-01-PV	ST. CLAIR	61	16
STA. 980+50.00 TO STA. 986+50.00				
FEDERAL AID PROJECT			CONTRACT 97447	



BENCHMARK DATA
 TBM 2/4/09" B" - TOP OF FLANGE BOLT BETWEEN "MUE" & "LLE" ON FIRE HYDRANT ON SOUTH SIDE OF MILBURN SCHOOL ROAD; NORTHEAST CORNER OF MILBURN ESTATES SUBD. ELEV. 548.81

SCALE:
 PLAN: 1" = 20' HORIZ.
 PROFILE: 1" = 20' HORIZ.
 1" = 5' VERT.

LEGEND	
(Tree symbol)	TREE
(Shrub symbol)	SHRUB
(Sapling symbol)	SAPLING
(Mailbox symbol)	MAILBOX
(Storm inlet symbol)	STORM INLET
(Culvert symbol)	CULVERT
(Telephone pedestal symbol)	TELEPHONE PEDESTAL
(Cable TV pedestal symbol)	CABLE TV PEDESTAL
(Electric pedestal symbol)	ELECTRIC PEDESTAL
(Gas valve symbol)	GAS VALVE
(Sign symbol)	SIGN
(Street sign symbol)	STREET SIGN
(Roadway/Traffic sign symbol)	ROADWAY/TRAFFIC SIGN
(Power pole symbol)	POWER POLE
(Proposed storm inlet symbol)	PROPOSED STORM INLET
(Guy wire symbol)	GUY WIRE
(Water meter symbol)	WATER METER
(Water valve symbol)	WATER VALVE
(Warning post symbol)	WARNING POST
(Fence symbol)	FENCE
(Swale flowline symbol)	SWALE FLOWLINE
(Edge of pavement symbol)	EDGE OF PAVEMENT
(Overhead electric symbol)	OVERHEAD ELECTRIC
(Underground electric symbol)	UNDERGROUND ELECTRIC
(Underground fiber optic symbol)	UNDERGROUND FIBER OPTIC
(Underground telephone symbol)	UNDERGROUND TELEPHONE
(Water main symbol)	WATER MAIN
(Sanitary sewer symbol)	SANITARY SEWER
(Proposed flowline symbol)	PROPOSED FLOWLINE



ROADWAY PLAN AND PROFILE MILBURN SCHOOL ROAD IMPROVEMENTS ST. CLAIR COUNTY, ILLINOIS