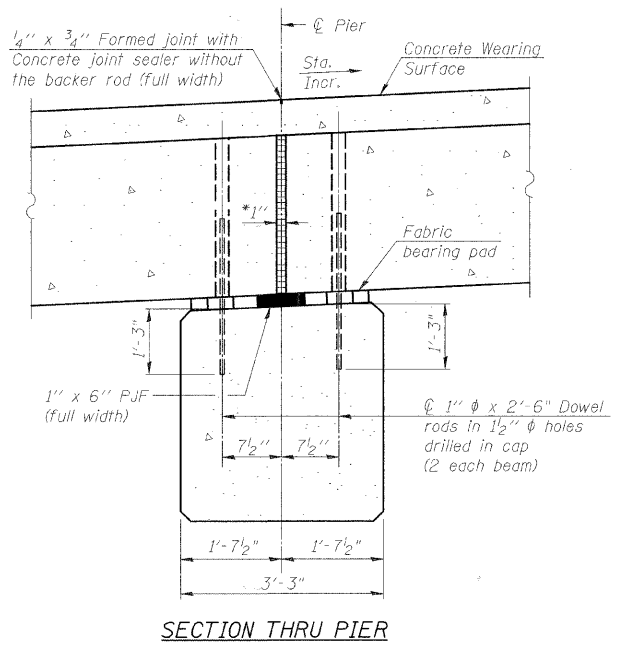
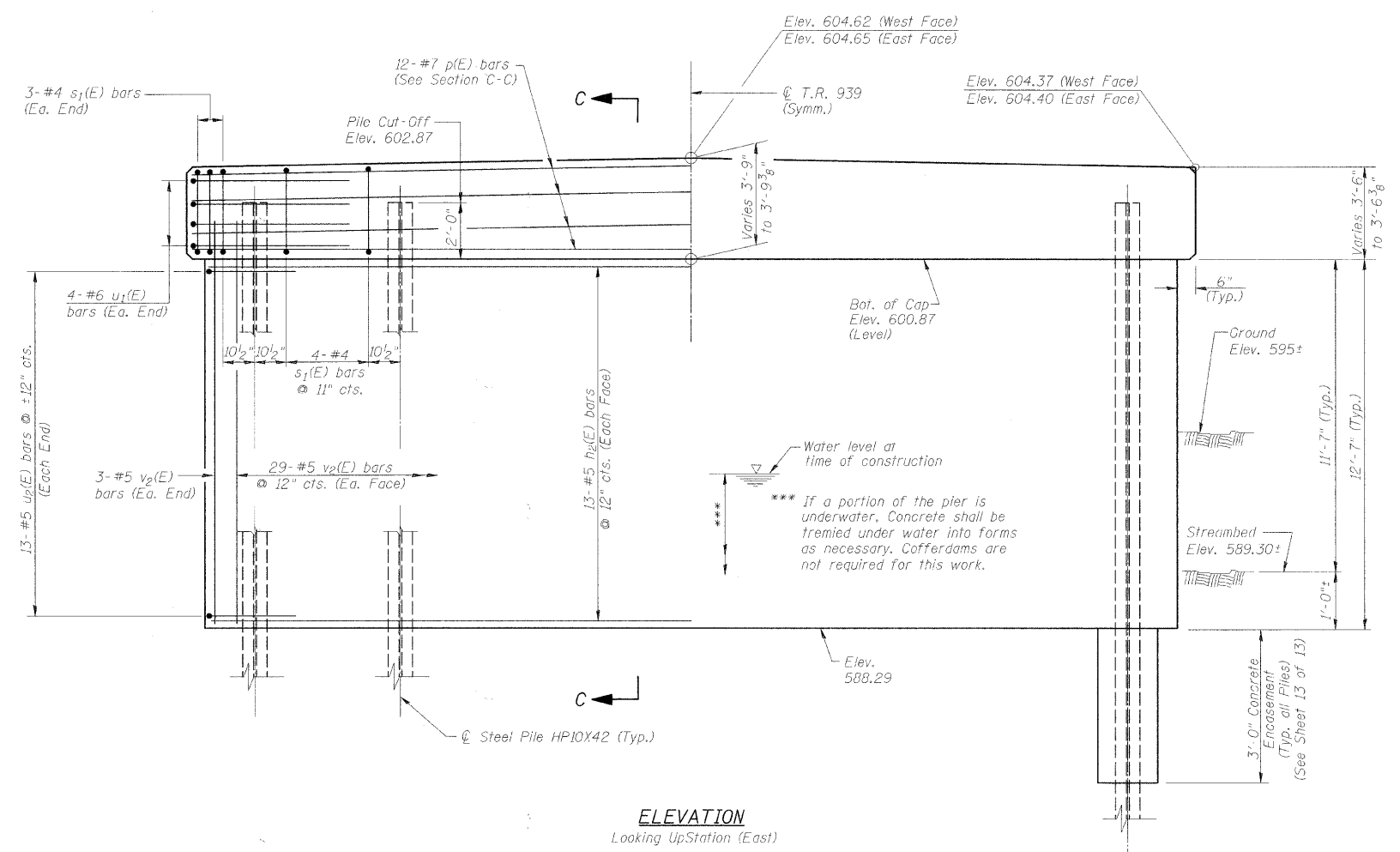
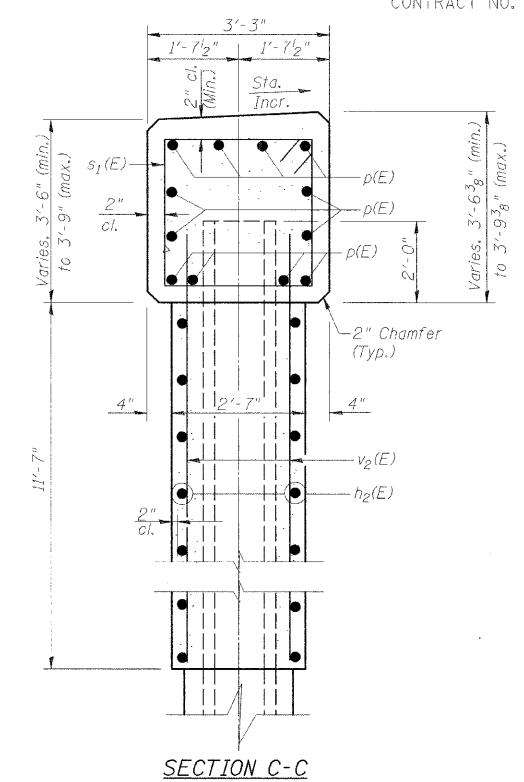


ROUTE NO.	SECTION	COUNTY	TOTAL SHEETS	SHEET NO.
T.R. 939	IO-P4000-00-BR	MACON	21	19
FED. ROAD DIST. NO.	ILLINOIS PROJECT:	CONTRACT NO. 95660		



* 1" Joint shall be filled with non-shrink grout. 1" dimension may vary to accommodate tolerance in beam length.



ELEVATION
Looking Up Station (East)

NOTES

- 1" dia. x 2'-6" dowel rods in 1/2" dia. holes drilled in cap (2 ea. beam). Dowel rods to be grouted after beams are in place and allowed to cure (min. 24 hrs.) prior to grouting the shear keys. The grout shall be an approved non-shrink grout.
- Reinforcement bars designated (E) shall be epoxy coated.
- Reinforcement bars shall conform to the requirements of A.S.T.M. A706 Grade 60. See Special Provisions.
- Space reinforcement in cap to miss dowel rods.

DESIGN STRESSES

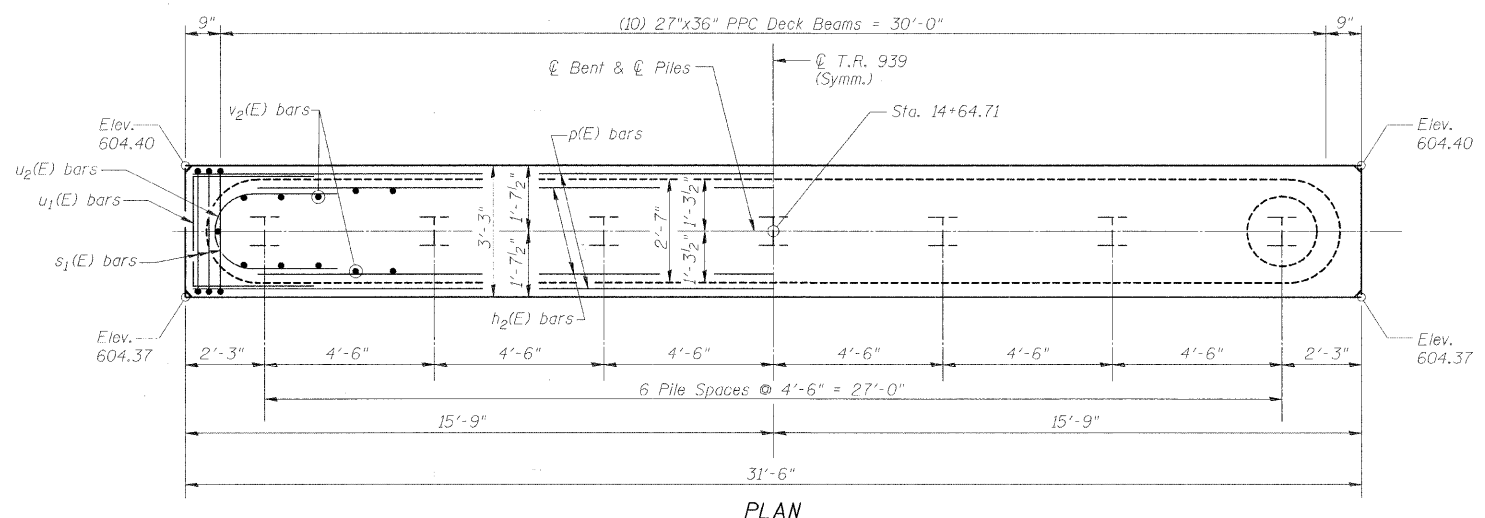
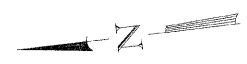
$f'_c = 3,500$ psi
 $f_y = 60,000$ psi

PILE DATA

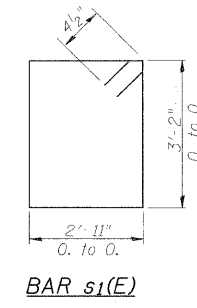
Type & Size: HP10x42
Nominal Required Bearing: 335 Kips
Factored Resistance Available: 181 Kips (Refusal)
Est. Length: 22'-0"
No. Required: 7

BILL OF MATERIAL

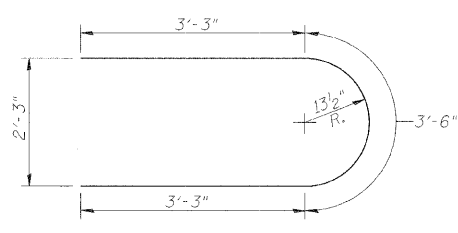
Bar	No.	Size	Length	Shape
$h_2(E)$	26	#5	27'-11"	—
$p(E)$	12	#7	31'-2"	—
$s_1(E)$	30	#4	12'-11"	□
$u_1(E)$	8	#6	12'-10"	—
$u_2(E)$	26	#5	10'-0"	—
$v_2(E)$	64	#5	14'-4"	—
Concrete Structures			Cu. Yd.	52.8
Concrete Encasement			Cu. Yd.	2.4
Reinforcement Bars, Epoxy Coated			Pound	3170
Furnishing Steel Piles HP10x42			Foot	154
Driving Steel Piles			Foot	154
Underwater Structure Excavation Protection - Location 1			Each	1



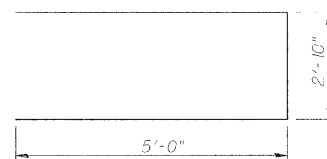
PLAN



BAR $s_1(E)$



BAR $u_2(E)$



BAR $u_1(E)$

PIER I

Date	Designed DCS	TR-939 (PARK DRIVE) OVER STEVENS CREEK SECTION IO-P4000-00-BR DECATUR PARK DISTRICT STA. 14+97.71 PROP. STR. NO. 058-9201	Sheet No.
Revisions	Drawn BKN		11
	Checked KWB		of 13
	Approved KWB		URS Job No. 36432943
Prepared by:	URS 345 East Ash Avenue Decatur, IL 62526		