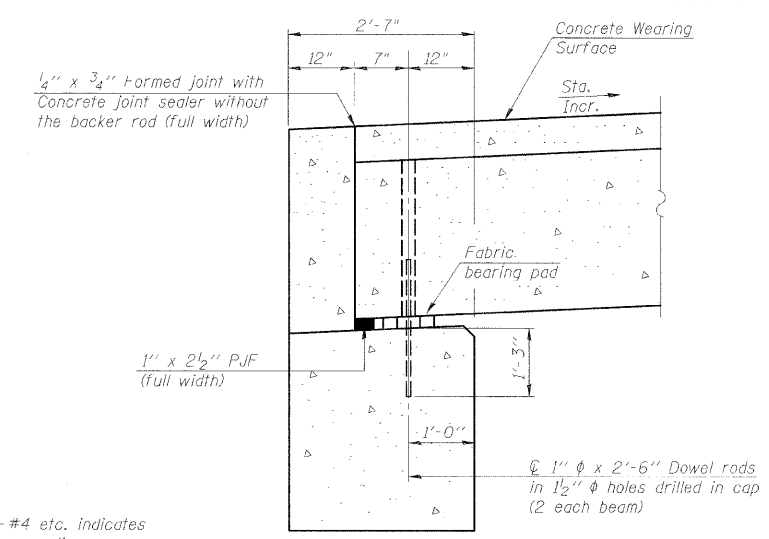
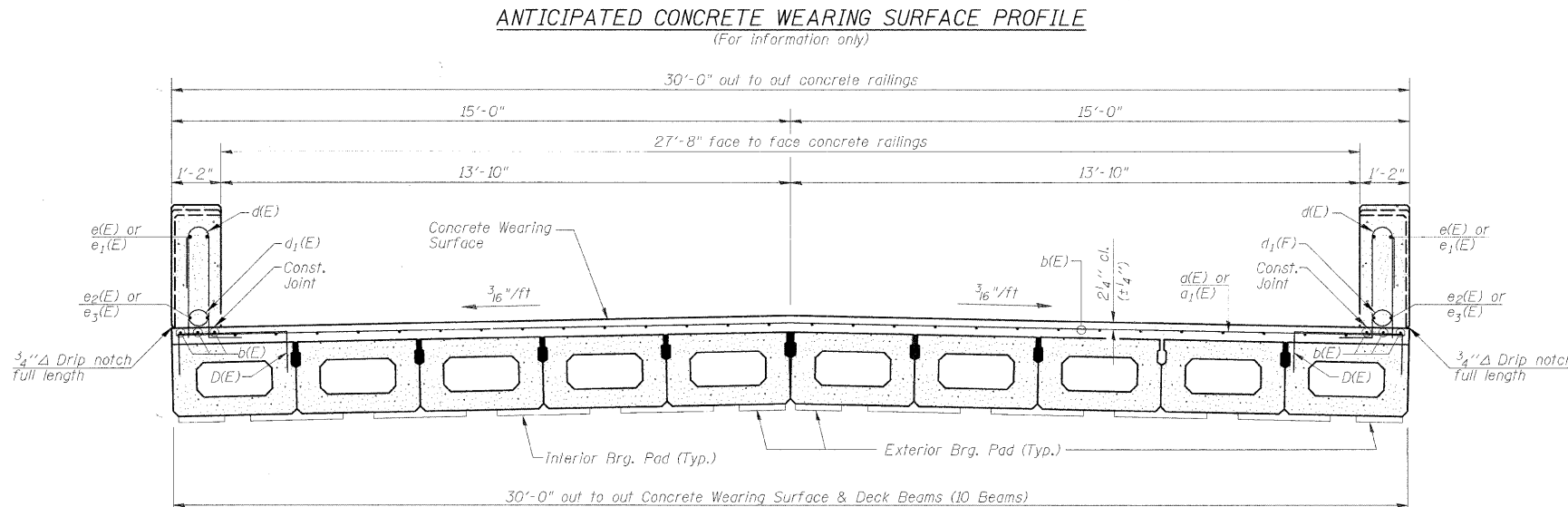
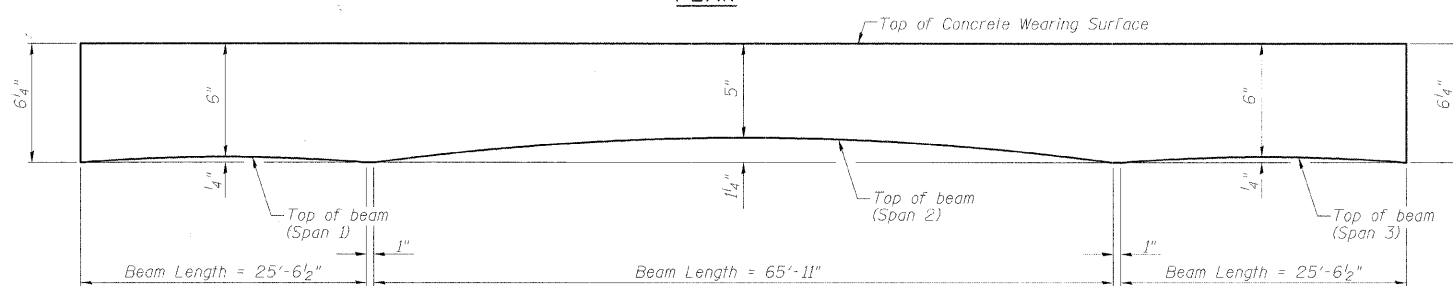
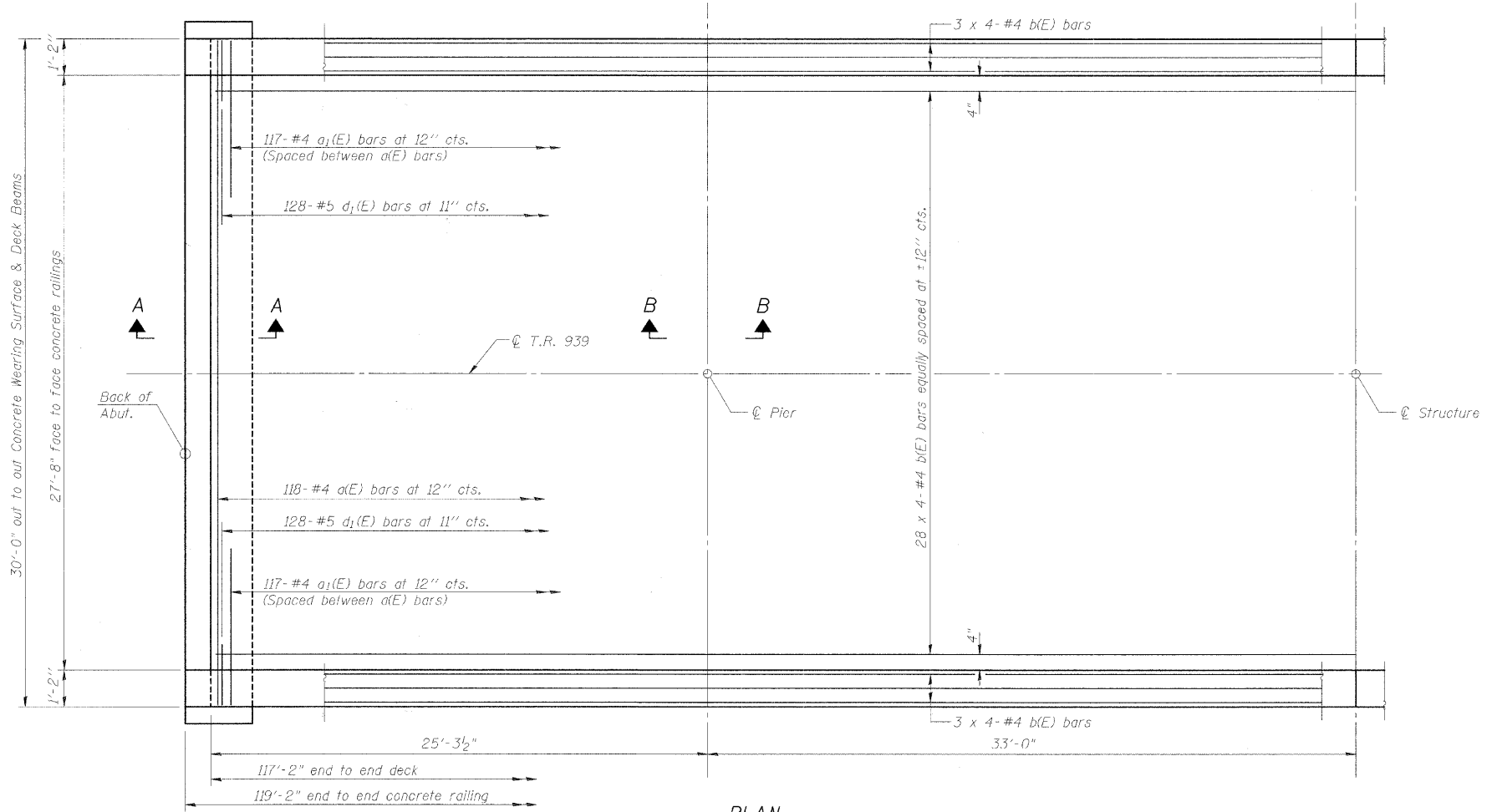


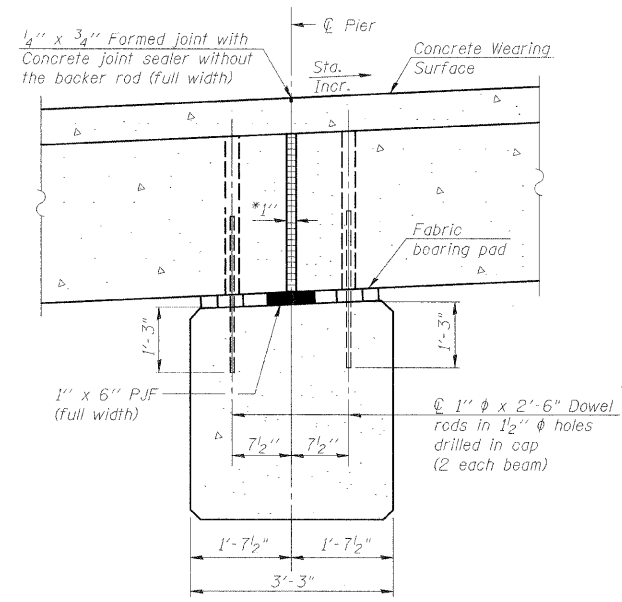
ROUTE NO.	SECTION	COUNTY	TOTAL SHEETS	SHEET NO.
TR-939	10-P4000-00-BR	MACON	21	14
FED. ROAD DIST. NO.		ILLINOIS PROJECT:	CONTRACT NO. 95660	



NOTES
 Bars indicated thus 28 x 4-#4 etc. indicates 28 lines of bars with 4 lengths per line.

MINIMUM BAR LAP
 #4 bar = 2'-7"

Notes:
 All concrete wearing surfaces shall be placed prior to casting the backfill.
 See sheet 3 & 5 of 13 for fabric bearing pad details.



*1" Jt. shall be filled with non-shrink grout. 1" dimension may vary to accommodate tolerance in beam lengths.

SUPERSTRUCTURE
STRUCTURE NO. 058-9201

SUPERSTRUCTURE			Sheet No.
Date	Designed DCS	TR-939 (PARK DRIVE) OVER STEVENS CREEK SECTION 10-P4000-00-BR DECATUR PARK DISTRICT STA. 14+97.71 PROP. STR. NO. 058-9201	6
Revisions	Drawn BKN		
	Checked KWB		
	Approved KWB		
Prepared by:	URS		
345 East Ash Avenue Decatur, IL 62526		URS Job No.	36432943