

**BENCHMARK:**

SURVEY CONTROL POINT #2 (IRON PIN)  
 STA. 13+99.29, 15.24' RT.  
 ELEV. = 604.32

**EXISTING STRUCTURE NO. 058-9200**

THREE SPAN CONCRETE SLAB WITH STEEL STRINGERS  
 ON CONCRETE CLOSED ABUTMENTS AND CONCRETE PIERS.

STA. 14+97.71, SPECIAL BRIDGE DESIGN,  
 THREE SPAN PPC DECK BEAM BRIDGE,  
 SPANS 1 & 3 = 24'-4 1/2", SPAN 2 = 64'-9"  
 ON CONC. PILE BENT ABUTMENTS & PIERS  
 LENGTH = 119'-2" BK.-BK. ABUTMENTS  
 WIDTH = 30'-0" O.-O. DECK  
 NO SKEW

SURVEY CONTROL POINT NO. 1

PT Sta 8+99.57  
 N100001.795  
 E99502.124

50' TRANS. TO  
 MATCH EXIST.

BEGIN CONSTRUCTION  
 STA. 11+28.98

PC Sta 11+49.08  
 N100017.120  
 E99751.166

PT Sta 14+20.11  
 N100013.480  
 E100021.919

FUTURE  
 BIKE TRAIL  
 (BY OTHERS)

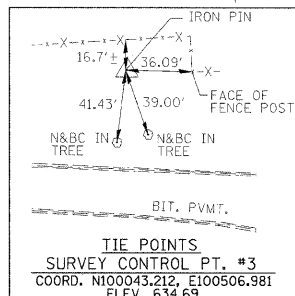
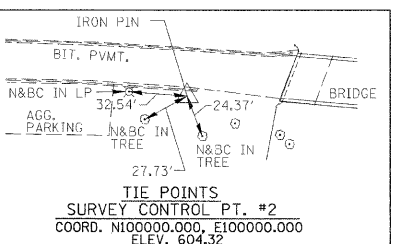
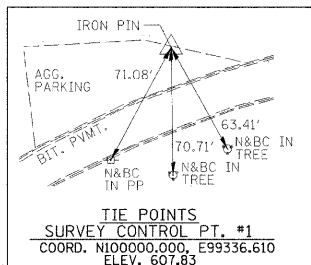
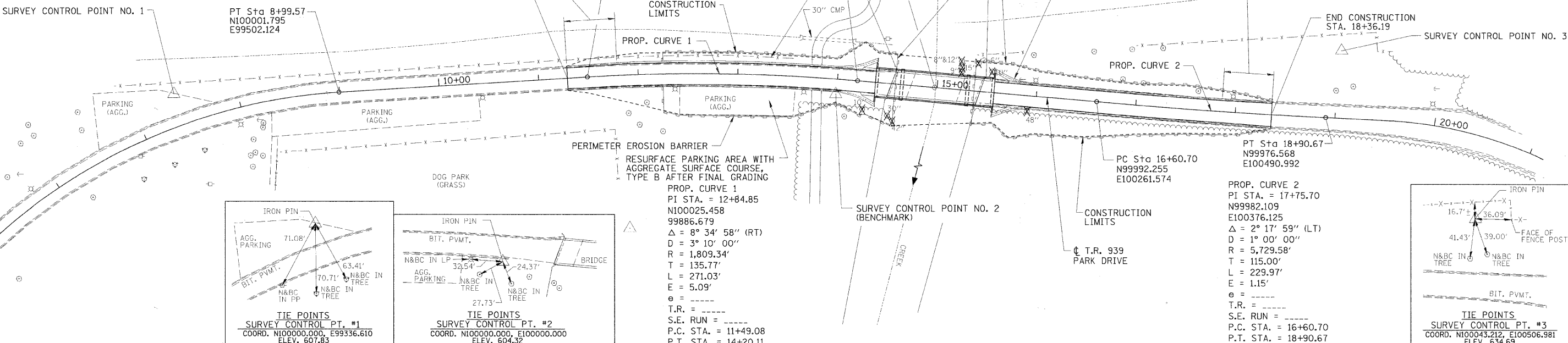
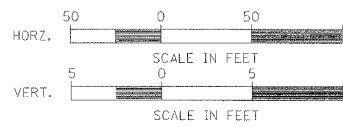
50' TRANS. TO  
 MATCH EXIST.

PERIMETER EROSION BARRIER

GUTTER OUTLET (SPECIAL)  
 TYPICAL ALL QUADRANTS  
 SEE DETAIL ON SHEET 2 OF 21.

END CONSTRUCTION  
 STA. 18+36.19

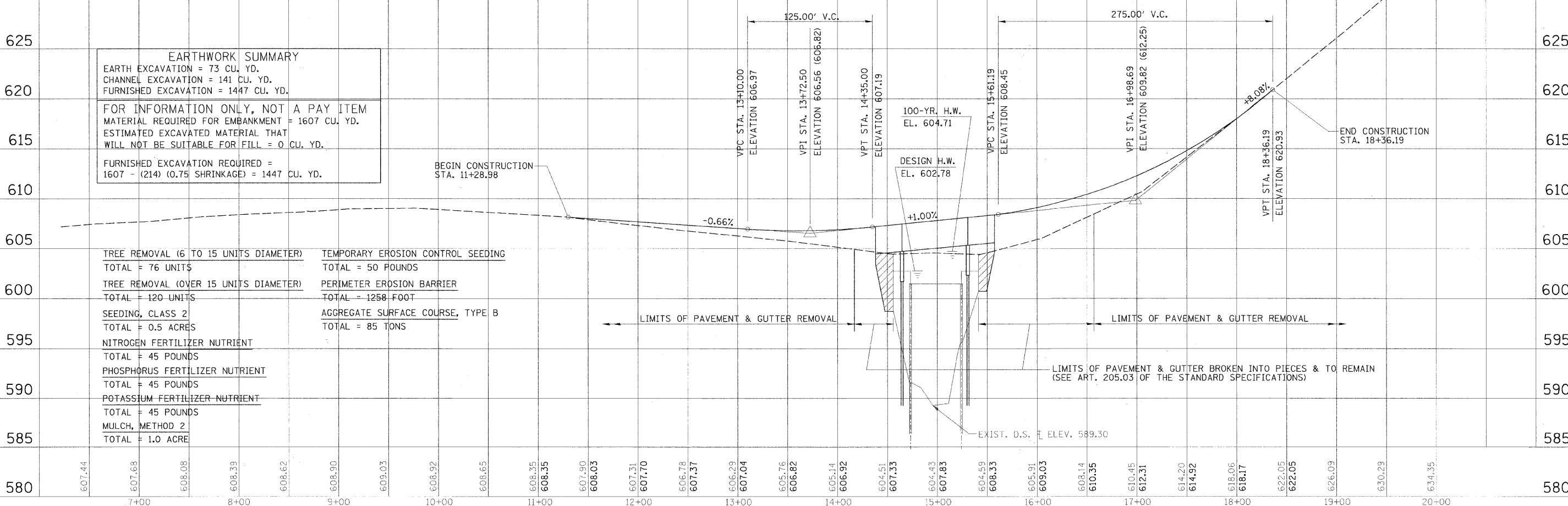
SURVEY CONTROL POINT NO. 3



RESURFACE PARKING AREA WITH  
 AGGREGATE SURFACE COURSE,  
 TYPE B AFTER FINAL GRADING

PROP. CURVE 1  
 PI STA. = 12+84.85  
 N100025.458  
 99886.679  
 $\Delta = 8^\circ 34' 58''$  (RT)  
 $D = 3^\circ 10' 00''$   
 $R = 1,809.34'$   
 $T = 135.77'$   
 $L = 271.03'$   
 $E = 5.09'$   
 $e =$   
 T.R. =  
 S.E. RUN =  
 P.C. STA. = 11+49.08  
 P.T. STA. = 14+20.11

PROP. CURVE 2  
 PI STA. = 17+75.70  
 N99982.109  
 E100376.125  
 $\Delta = 2^\circ 17' 59''$  (LT)  
 $D = 1^\circ 00' 00''$   
 $R = 5,729.58'$   
 $T = 115.00'$   
 $L = 229.97'$   
 $E = 1.15'$   
 $e =$   
 T.R. =  
 S.E. RUN =  
 P.C. STA. = 16+60.70  
 P.T. STA. = 18+90.67



**EARTHWORK SUMMARY**

EARTH EXCAVATION = 73 CU. YD.  
 CHANNEL EXCAVATION = 141 CU. YD.  
 FURNISHED EXCAVATION = 1447 CU. YD.

FOR INFORMATION ONLY, NOT A PAY ITEM  
 MATERIAL REQUIRED FOR EMBANKMENT = 1607 CU. YD.  
 ESTIMATED EXCAVATED MATERIAL THAT  
 WILL NOT BE SUITABLE FOR FILL = 0 CU. YD.

FURNISHED EXCAVATION REQUIRED =  
 1607 - (214) (0.75 SHRINKAGE) = 1447 CU. YD.

TREE REMOVAL (6 TO 15 UNITS DIAMETER) TOTAL = 76 UNITS	TEMPORARY EROSION CONTROL SEEDING TOTAL = 50 POUNDS
TREE REMOVAL (OVER 15 UNITS DIAMETER) TOTAL = 120 UNITS	PERIMETER EROSION BARRIER TOTAL = 1258 FOOT
SEEDING, CLASS 2 TOTAL = 0.5 ACRES	AGGREGATE SURFACE COURSE, TYPE B TOTAL = 85 TONS
NITROGEN FERTILIZER NUTRIENT TOTAL = 45 POUNDS	
PHOSPHORUS FERTILIZER NUTRIENT TOTAL = 45 POUNDS	
POTASSIUM FERTILIZER NUTRIENT TOTAL = 45 POUNDS	
MULCH, METHOD 2 TOTAL = 1.0 ACRE	

FILE NAME =	USER NAME = #USER#	DESIGNED - MJP	REVISED -	<b>STATE OF ILLINOIS                  DEPARTMENT OF TRANSPORTATION</b>	<b>PLAN AND PROFILE</b>	RTE.	SECTION	COUNTY	TOTAL SHEETS	SHEET NO.	
#FILE#		DRAWN - BKN	REVISED -			TR-939	10-P4000-00-BR	MACON	21	3	
PLOT SCALE = #SCALE#		CHECKED - KWB	REVISED -			CONTRACT NO. 95660					
PLOT DATE = #DATE#		DATE -	REVISED -			FED. ROAD DIST. NO. [ILLINOIS] FED. AID PROJECT:					

SCALE: AS SHOWN SHEET NO. 1 OF 1 SHEETS STA. 8+99.57 TO STA. 18+90.67