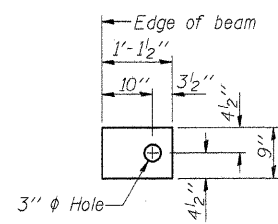


**FABRIC BEARING PAD**

(Interior)  
(24 Required)

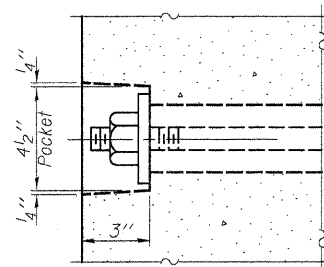


**FABRIC BEARING PAD**

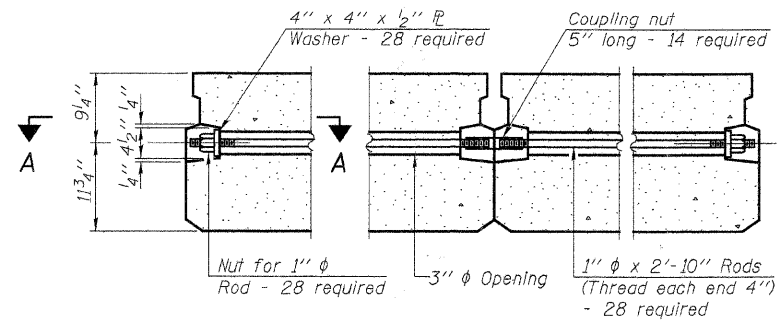
(Exterior)  
**FIXED**  
(16 Required)

Notes:

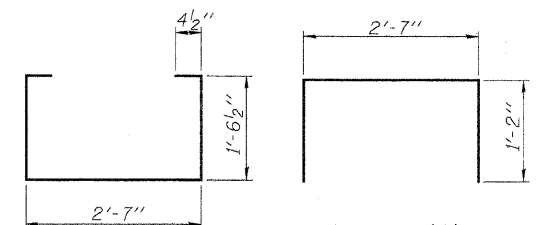
All bearing pads shall be 1" thick.  
Omit holes when using expansion bearings.  
Expansion bearing pad shall be bonded to the substructure.



**SECTION A-A**

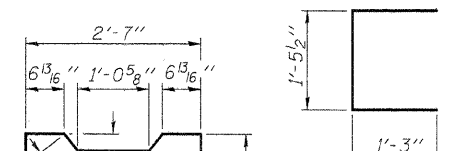


**TYPICAL TRANSVERSE TIE ASSEMBLY**



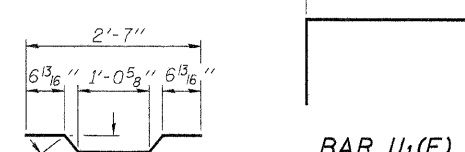
**BAR S<sub>1</sub>(E)**

**BAR S(E)**



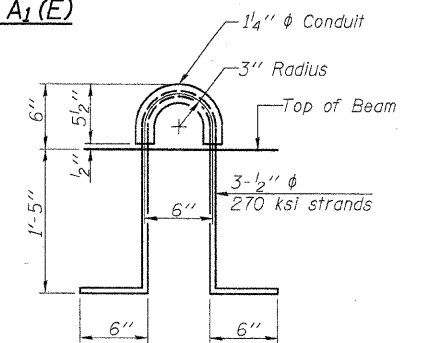
**BAR U(E)**

**BAR S<sub>2</sub>(E)**

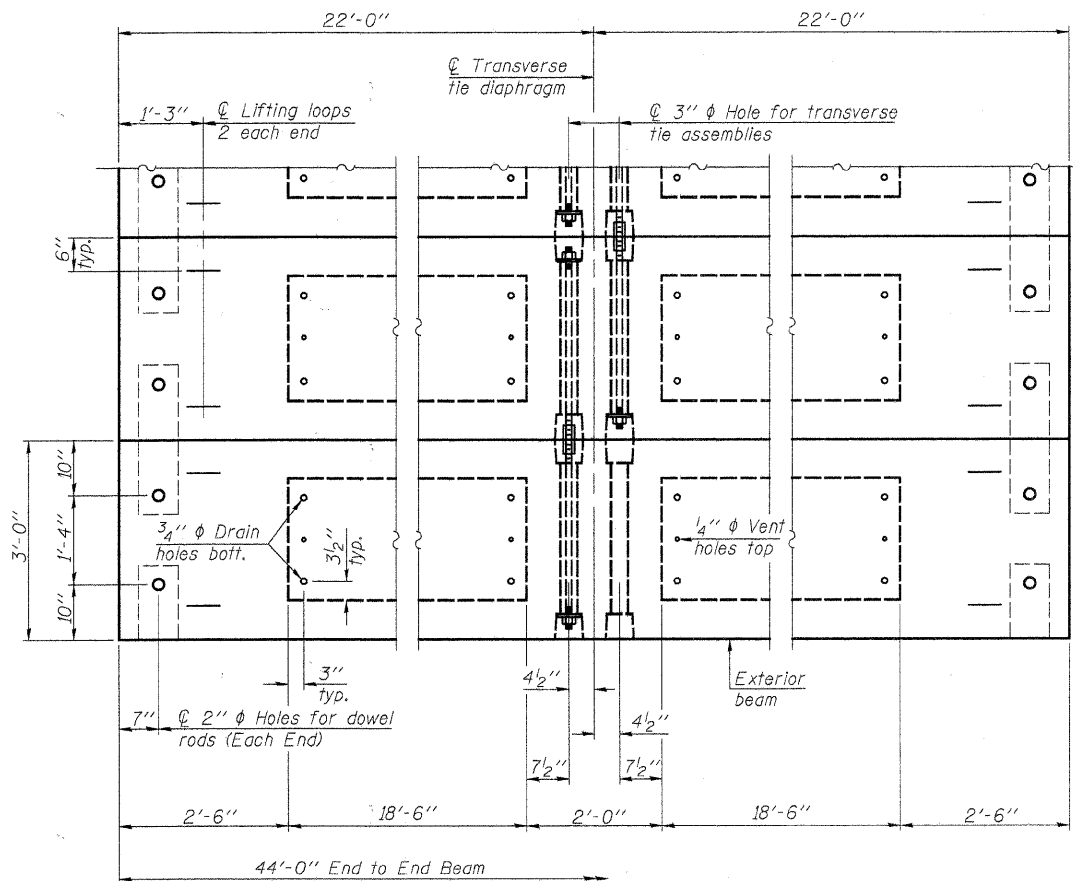


**BAR U<sub>1</sub>(E)**

**BAR A<sub>1</sub>(E)**



**LIFTING LOOP DETAIL**



**PLAN VIEW**

Note: Connect beams in pairs with the transverse tie configuration shown.

**NOTES**

- Prestressing steel shall be uncoated high strength, low-relaxation 7-wire strand, Grade 270. The nominal diameter shall be 1/2" and the nominal cross-sectional area shall be 0.153 sq. in.
- The 1" diameter rods in the transverse tie assembly shall be tightened to a snug fit and the threads set. Pockets on exterior faces of bridge shall be filled with grout after transverse tie assembly is in place.
- Reinforcement bars shall conform to ASTM A 706, Grade 60.
- Two 1/8" fabric adjusting shims of the dimensions of the exterior bearing pad shall be provided for each bearing pad location. (80 Required)
- A minimum 2 1/2" diameter lifting pin shall be used to engage the lifting loops during handling.
- Corrosion inhibitor, per Article 1020.05(b)(12) and 1021.06 of the Standard Specifications, shall be used in the concrete for precast prestressed concrete deck beams.
- Compressive strength of prestressed concrete, f'c, shall be 6000 psi.
- Compressive strength of prestressed concrete at release, f'ci, shall be 5000 psi.
- Roll post inserts, specified elsewhere, shall be cast into the exterior face of the outside beams. See Special Provisions for review and distribution of shop drawings.

**BILL OF MATERIAL - SPANS 1 & 3**

Precast Prestressed Conc. Deck Bms. (21" depth)	Sq. Ft.	2,112
---	---------	-------

Estimated Total Weight (One Beam) = 26,400 Pounds

PD-2136-OD

7-1-10

FILE NAME = 4683BU.SUPER.DGN	USER NAME = S.A.P.	DESIGNED - J.A.M.	REVISED -
		CHECKED - S.F.M.	REVISED -
		DRAWN - S.A.P.	REVISED -
		CHECKED - J.A.M., S.F.M. & A.R.K.	REVISED -

**FEHR-GRAHAM & ASSOCIATES, LLC**  
ENGINEERING AND SCIENCE CONSULTANTS  
FREEPORT, IL ROCKFORD, IL ROCHELLE, IL MONROE, WI SPRINGFIELD, IL

**21" x 36" PPC DECK BEAM DETAILS - SPANS 1 & 3**  
S.N. 087-3560

TWP. RTE.	SECTION	COUNTY	TOTAL SHEETS	SHEET NO.
283A	06-02119-00-BR	SHELBY	22	8
ILLINOIS			CONTRACT NO. 95657	
			BIG SPRING ROAD DISTRICT	