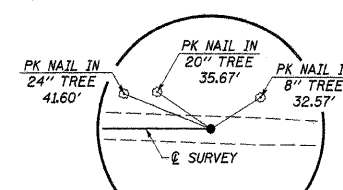
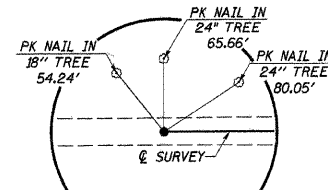


TWP. RTE.	SECTION	COUNTY	TOTAL SHEETS	SHEET NO.
283A	06-02119-00-BR	SHELBY	22	3
STA. 10+00 TO STA. 18+71.72		BIG SPRING		
ROAD DIST. ILLINOIS		CONTRACT NO. 95657		

SW 1/4, SEC. 1, T. 10 N., R. 6 E., 3RD P.M.
CITY OF MATTOON



ENTRANCES TO BE BUILT
RT. STA. 13+25, F.E. -15.0%, 20' ROADBED
LT. STA. 16+60, -15.0%, 16' ROADBED
QUANTITIES INCLUDED IN THOSE LISTED

ENTRANCES TO BE REMOVED
LT STA. 14+05, F.E. 10' ROADBED

P.O.T. STA. 10+00
R.R. SPIKE (FLUSH)

P.O.T. STA. 18+71.72
#5 REBAR (FLUSH)

IRON PIN (FOUND)
NW CORNER, SECTION 12

IRON PIN W/ CAP #3118 (FOUND)
N 1/4 CORNER, SECTION 12

CHANNEL EXCAVATION

THE CHANNEL SHALL BE EXCAVATED AS SHOWN WITHIN THE LIMITS OF THE PROPOSED STRUCTURE THEN TAPER TO THE EXISTING CHANNEL AT THE R.O.W. LINES. SUITABLE EXCAVATED MATERIAL TO BE USED IN THE EMBANKMENT AS DIRECTED BY THE ENGINEER.

CHANNEL EXCAVATION = 450 CU. YD.

NOTE: SEE SHEET 18 FOR EROSION CONTROL PLAN.

INDICATES TEMPORARY CONSTRUCTION EASEMENT TO BE ACQUIRED.

GARY & LUANN HARTKE
NW 1/4, SEC. 12, T. 10 N., R. 6 E., 3RD P.M.

- UTILITIES**
- GAS LINE**
AMEREN CIPS
CURT FISHER
(217)-234-0429
 - TELEPHONE**
FRONTIER COMMUNICATIONS
GREG CURTIS
(217)-892-3359
 - OVERHEAD POWER**
SHELBY ELECTRIC CO-OP
JIM MATLOCK
(217)-774-3986

EXISTING STRUCTURE NO. 087-3191

TWO SPAN STEEL STRINGER BRIDGE WITH TIMBER DECK ON CLOSED TIMBER ABUTMENTS AND TIMBER PILE BENT PIERS. BK-BK. 77'-6", 0'-0. 21'-6", 0° SKEW.

REMOVAL OF EXISTING STRUCTURES = 1 EACH

PLAN	DATE
BY	
DATE	
BY	
DATE	
BY	
DATE	
BY	
DATE	

PROFILE	DATE
BY	
DATE	
BY	
DATE	
BY	
DATE	
BY	
DATE	

DATE: 1/28/07
FILE NAME: 46863a-07.dgn
PLOT SCALE: S. PRICE
USER NAME: S. PRICE

