

ROUTE NO.	SECTION	COUNTY	TOTAL SHEETS	SHEET NO.
T.R. 283A	06-02119-00-BR	SHELBY	22	1
ROAD DIST.		ILLINOIS	BIG SPRING	

CONTRACT NO. 95657

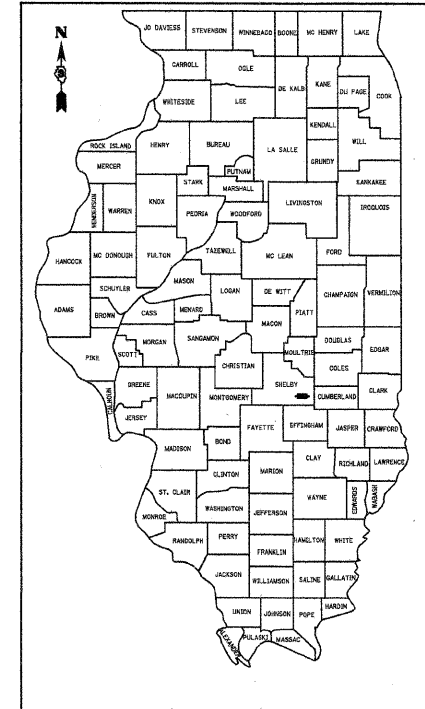
# STATE OF ILLINOIS

## DEPARTMENT OF TRANSPORTATION

### DIVISION OF HIGHWAYS

# PLANS FOR PROPOSED HIGHWAY BRIDGE PROGRAM

**BIG SPRING ROAD DISTRICT**  
**SECTION 06-02119-00-BR**  
**SHELBY COUNTY**  
**PROJECT NO. BROS-173(175)**  
**T.R. 283A**  
**JOB NO.: C-97-063-11**



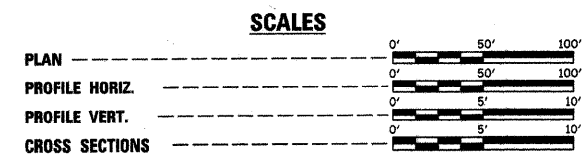
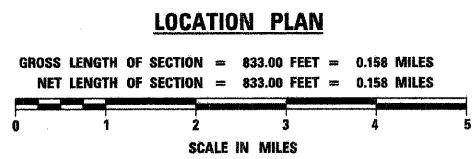
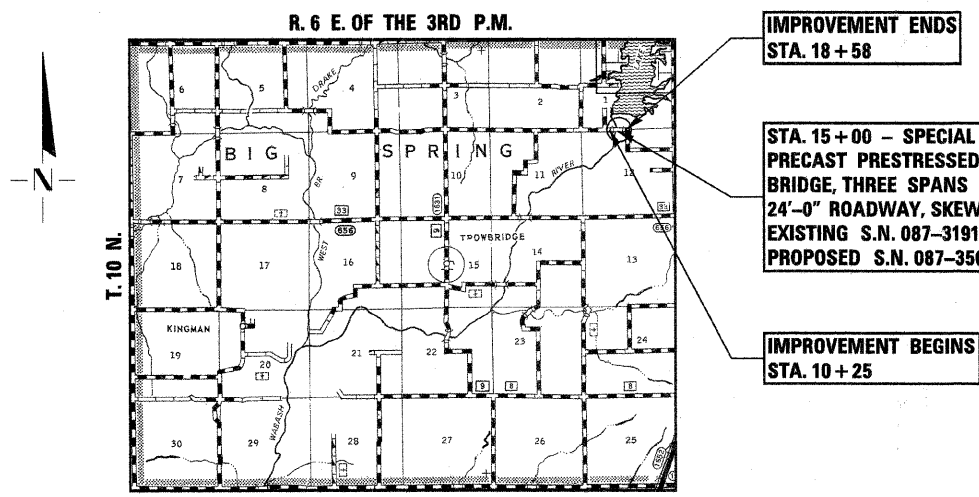
LOCATION OF SECTION INDICATED THUS:   
**CLASSIFICATION: RURAL TWO-LANE LOCAL ROADS**  
**DESIGN VOLUME: UNDER 250 ADT**  
**CURRENT ADT: 187 (2011)**  
**DESIGN SPEED: 30 M.P.H.**

TOLL FREE JOINT UTILITY LOCATING  
INFORMATION FOR EXCAVATORS (J.U.L.I.E.)  
TELEPHONE NUMBER 1-800-892-0123

PASSED	<i>06 APR 11</i>	20 11
	<small>ROAD DISTRICT COMMISSIONER</small>	
APPROVED	<i>06 APR 11</i>	20 11
	<small>COUNTY ENGINEER</small>	
PASSED	<i>4/21</i>	20 11
	<small>DISTRICT SEVEN ENGINEER OF LOCAL ROADS &amp; STREETS</small>	
RELEASED FOR BID BASED ON LIMITED REVIEW	<i>4/21</i>	20 11
	<small>DEPUTY DIRECTOR OF HIGHWAYS, REGION FOUR ENGINEER</small>	
<small>STATE OF ILLINOIS DEPARTMENT OF TRANSPORTATION</small>		

SHEET NO.	TITLE
1.	COVER SHEET
2.	SUMMARY OF QUANTITIES, GENERAL NOTES & TYPICAL SECTIONS
3.	PLAN AND PROFILE
4.	SHOULDER AND GUARDRAIL DETAILS
5.-15.	BRIDGE PLANS
16.-21.	STATION CROSS SECTIONS
22.	EROSION CONTROL PLAN

STANDARDS	STANDARD SYMBOLS, ABBREVIATIONS AND PATTERNS
000001-06	STANDARD SYMBOLS, ABBREVIATIONS AND PATTERNS
280001-05	TEMPORARY EROSION CONTROL SYSTEMS
515001-03	NAME PLATE FOR BRIDGES
630001-09	STEEL PLATE BEAM GUARDRAIL
630301-05	SHOULDER WIDENING FOR TYPE 1 (SPECIAL) GUARDRAIL TERMINALS
635006-03	REFLECTOR AND TERMINAL MARKER PLACEMENT
701901-01	TRAFFIC CONTROL DEVICES
BLR 21-8	TYPICAL APPLICATION OF TRAFFIC CONTROL DEVICES FOR CONSTRUCTION ON RURAL LOCAL HIGHWAYS
BLR 27-1	TRAFFIC BARRIER TERMINAL, TYPE 5A



*Cary J. Cartwright* 4-5-11  
ILLINOIS PROFESSIONAL NO. 43408

EXPIRES 11-30-11

4440 ASH GROVE  
SPRINGFIELD, ILL. 62711  
(217) 793-8600  
www.fehr-graham.com

**FEHR-GRAHAM & ASSOCIATES, LLC**  
ENGINEERING AND SCIENCE CONSULTANTS  
PEERSON, IL. MOOREPORT, VA. PECHILL, IL. MOOROCK, W. SPRINGFIELD, IL.