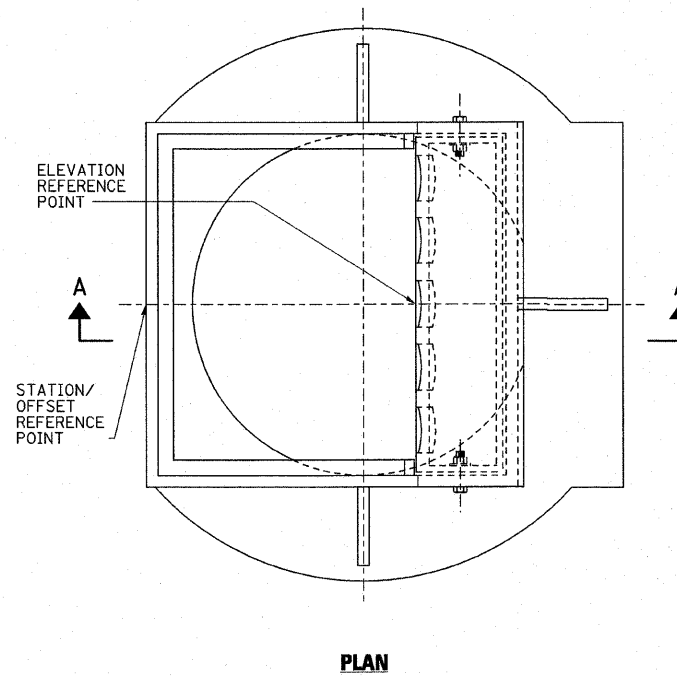


NOTE:  
TRENCH EXCAVATION AND FOUNDATION SHALL BE PER ARTICLE 550.04 OF THE STANDARD SPECIFICATIONS. COST INCLUDED IN THE COST OF THE NEW SEWER.

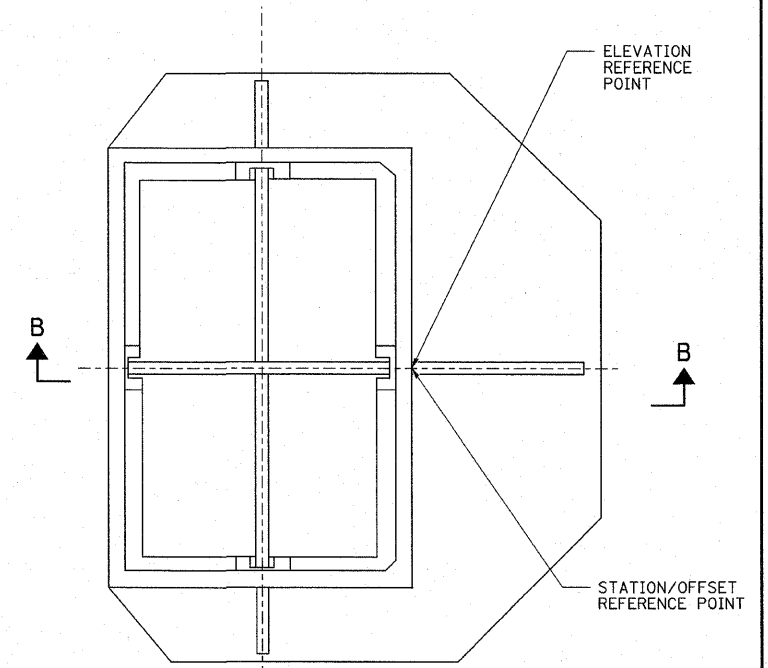
**TYPICAL TRENCH FOR STORM SEWER**

NOTE:  
WITH THE EXCEPTION OF TYPE 3V, TYPE 11V, AND TYPE 23 FRAMES AND GRATES, STATION/OFFSET REFERENCE POINTS WILL BE THE CENTER-LINE OF THE CASTING AND THE ELEVATION REFERENCE POINTS WILL BE THE TOP OF LID.

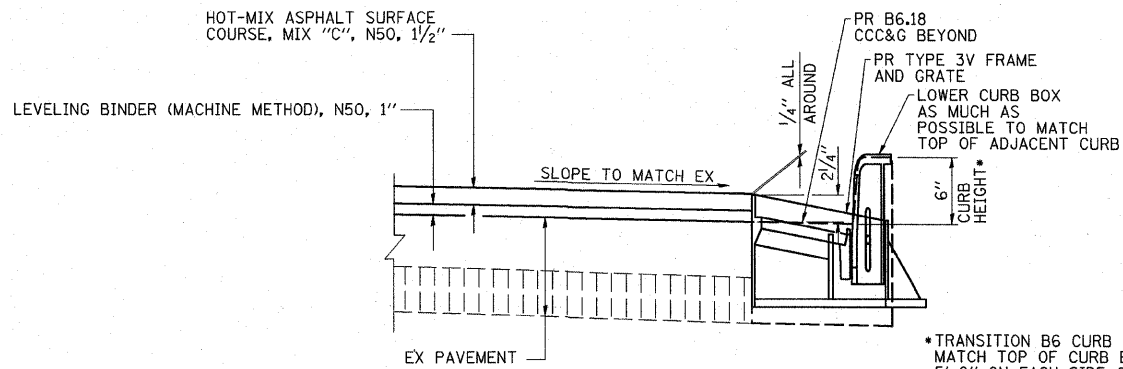
THE FOLLOWING DIAGRAMS ILLUSTRATE THE TYPES 3V, 11V & TYPE 23 FRAMES AND GRATES.



**PLAN**

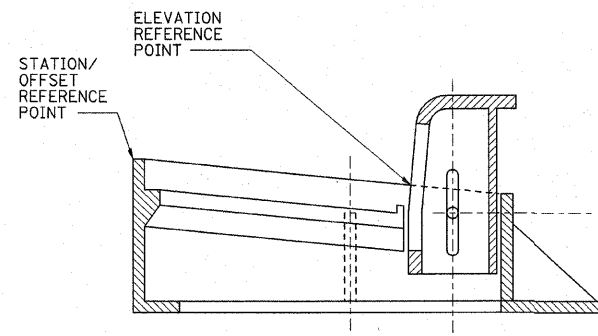


**PLAN**



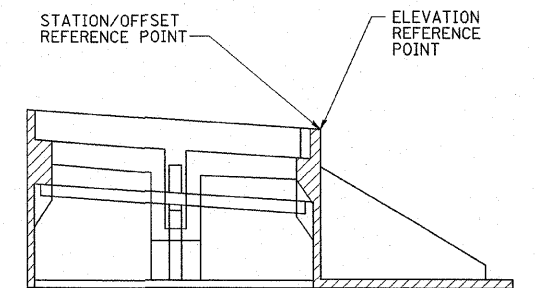
**SECTION THRU WASHINGTON STREET  
FRAME AND GRATE**

NOTE: CONTRACTOR SHALL PROVIDE A TEMPORARY DRAIN AT EACH CASTING TO REMOVE WATER FROM THE PAVEMENT PRIOR TO HMA SURFACING. COST INCLUDED IN INLETS AND INLETS TO BE ADJUSTED.



**SECTION A-A**

**FRAME AND GRATE TYPES 3V & 11V**



**SECTION B-B**

**FRAME AND GRATE TYPE 23**

USER = HAS  
DATE = 01/11  
TIME = 2:28:44 AM  
FILE = 44502-S-G4E.CVL.dgn  
SCALE = 0.884 / IN

DESIGNED BY:	ELH	01/11	SCALE:	NONE	NO.	DATE	REVISION	APVD
DRAWN BY:	HAS	01/11	DATE:	MAR. 25, 2011				
CHECKED BY:	ELH	03/11	JOB NO.	445.02				
APPROVED BY:	RDP	03/11						