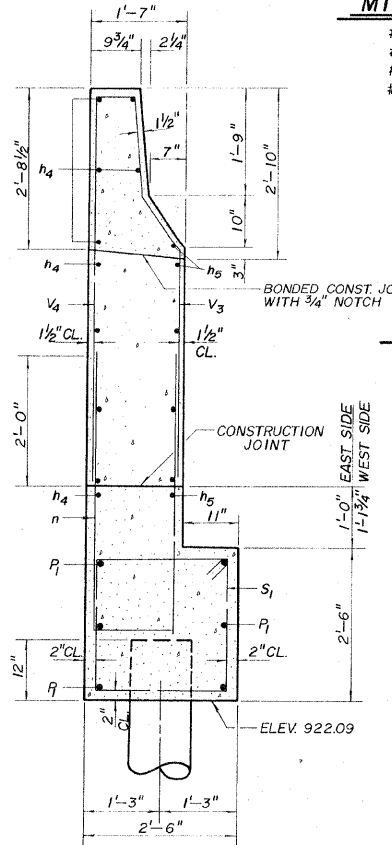


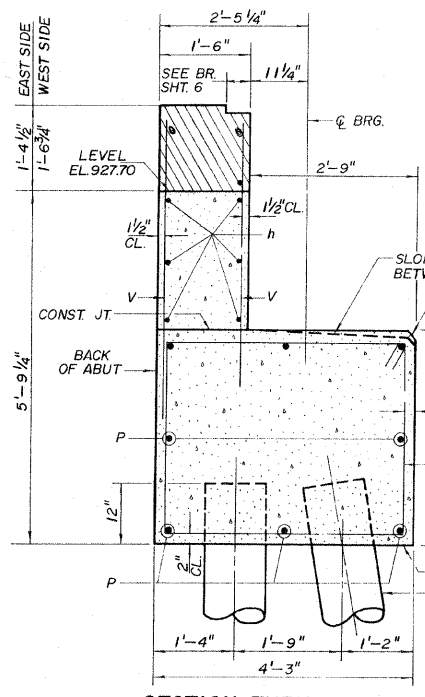
POUR STEPS MONOLITHICALLY WITH CAP
 HATCHED AREA TO BE POURED AFTER
 SUPERSTRUCTURE FORM HAS BEEN
 REMOVED. QUANTITY OF CLASS X
 CONCRETE SHALL BE BILLED WITH
 SUPERSTRUCTURE.

MIN. BAR LAPS

- #4 - 1'-4"
- #5 - 1'-8"
- #6 - 2'-0"
- #7 - 2'-9"



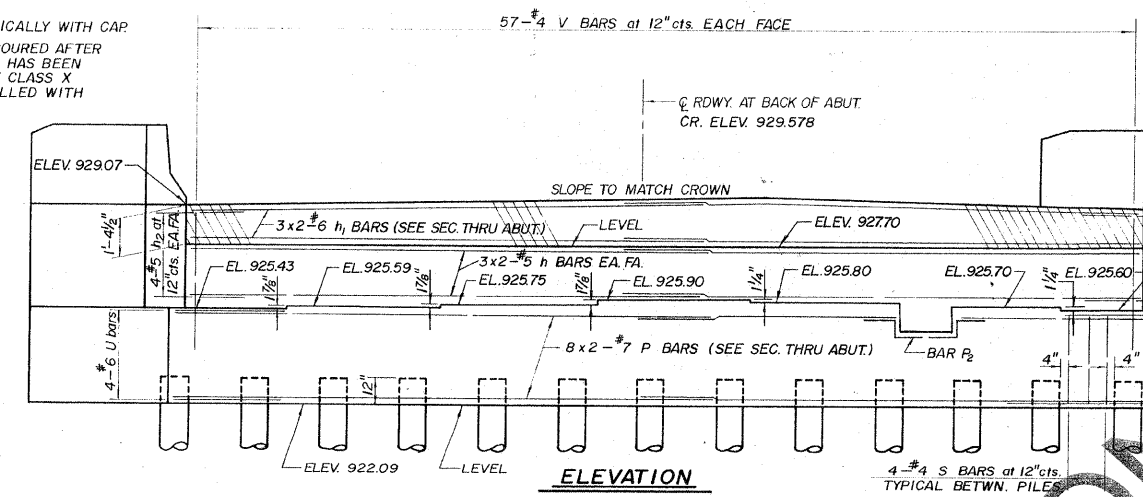
SECTION A-A



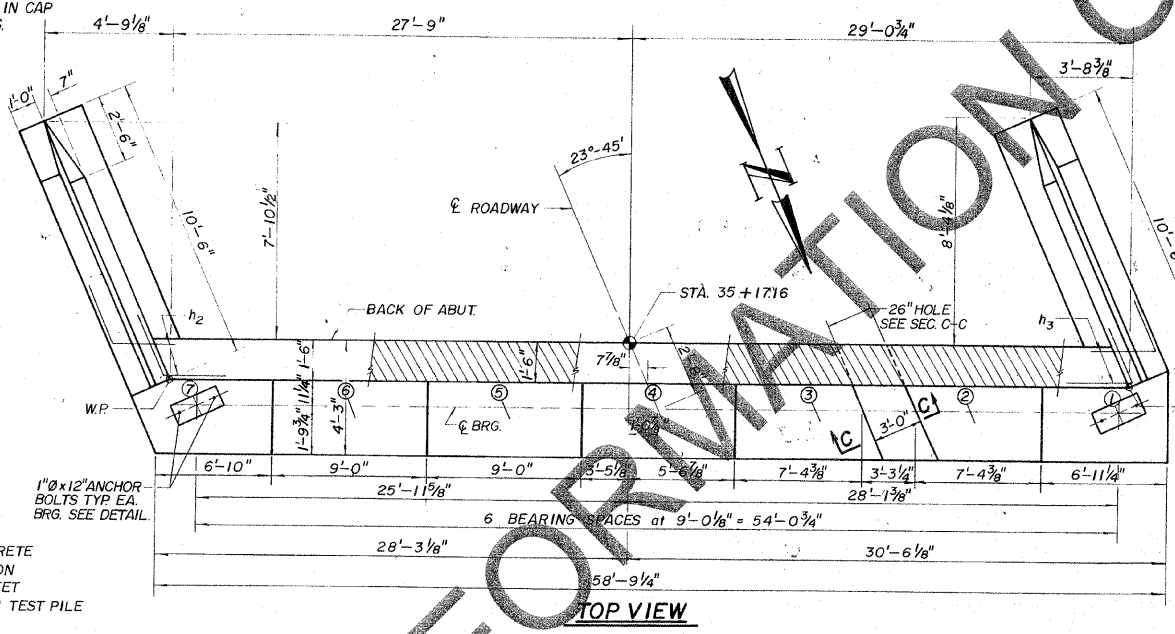
SECTION THRU ABUTMENT

ANCHOR BOLT LOCATIONS

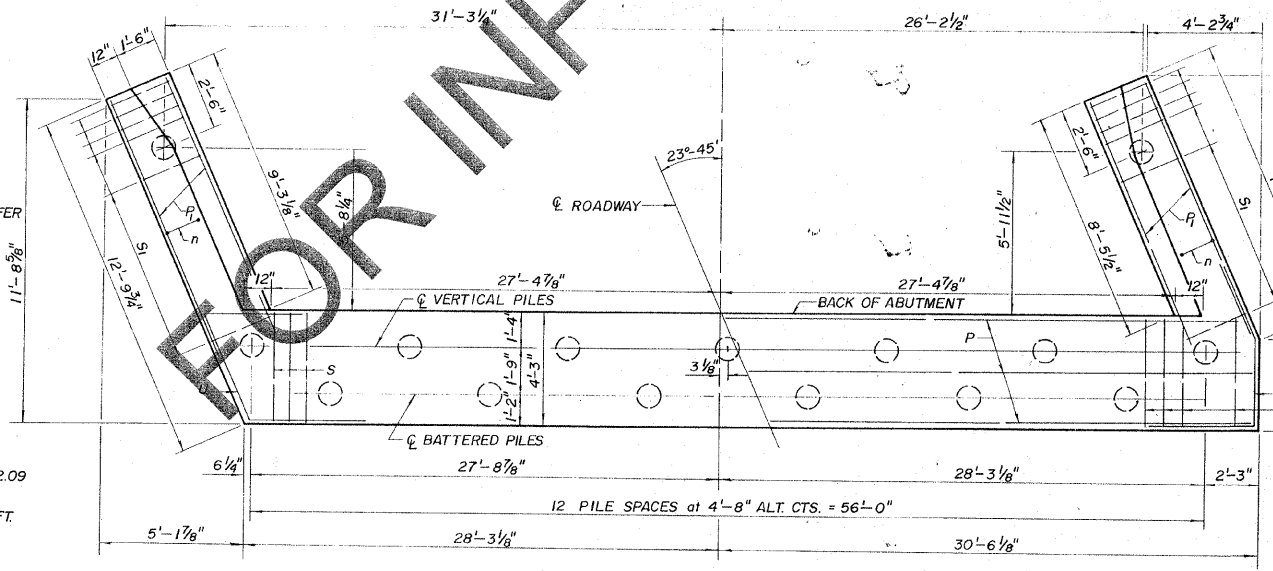
SPACE REINFORCEMENT IN CAP
 TO MISS ANCHOR BOLTS.



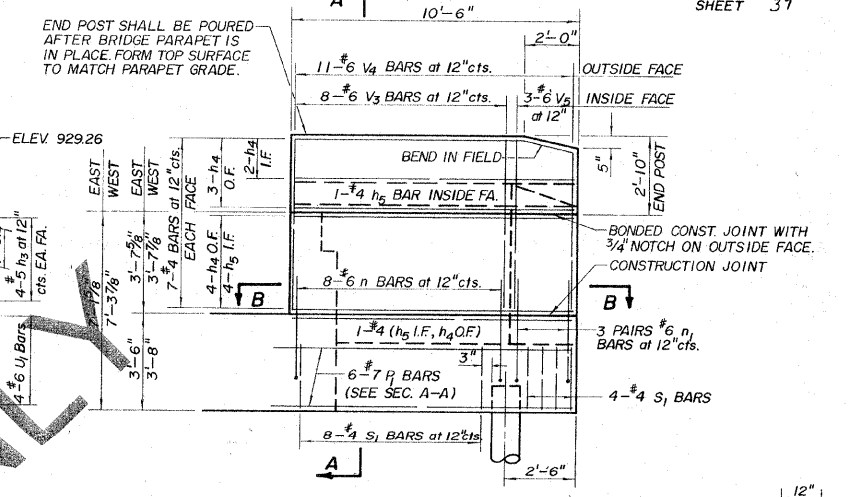
ELEVATION



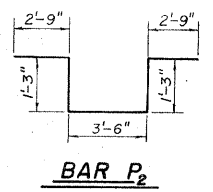
TOP VIEW



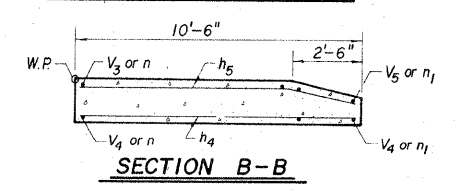
PLAN-PILE CAP



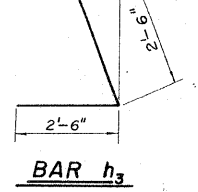
WINGWALL ELEVATION



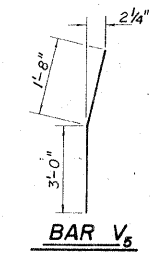
BAR P2



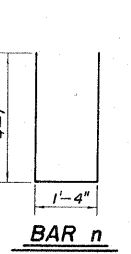
SECTION B-B



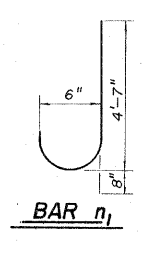
BAR h3



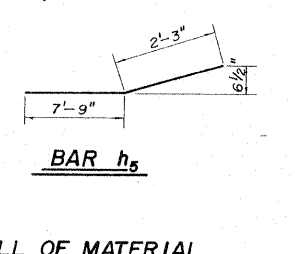
BAR V6



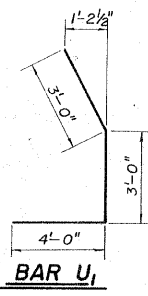
BAR n



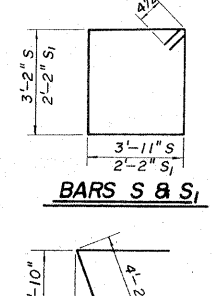
BAR n1



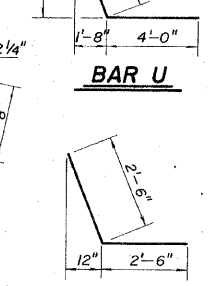
BAR h5



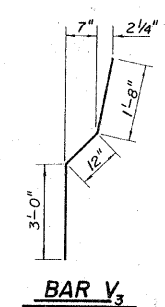
BAR U1



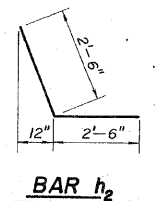
BARS S & S1



BAR U



BAR V3



BAR h2

BILL OF MATERIAL				
BAR	NO.	SIZE	LENGTH	SHAPE
h	12	#5	28'-10"	—
h1	6	#6	29'-0"	—
h2	8	#5	5'-0"	—
h3	8	#5	5'-0"	—
h4	20	#4	10'-0"	—
h5	12	#4	10'-0"	—
h6	8	#5	5'-0"	—
n	16	#6	10'-6"	—
n1	12	#6	5'-3"	—
P	16	#7	30'-9"	—
P1	12	#7	10'-6"	—
P2	2	#7	11'-6"	—
S	49	#4	14'-11"	—
S1	24	#4	9'-5"	—
U	4	#6	12'-2"	—
U1	4	#6	10'-0"	—
V	114	#4	5'-0"	—
V3	16	#6	5'-8"	—
V4	22	#6	6'-0"	—
V5	6	#6	4'-8"	—
CLASS X CONCRETE		CU. YD.	52.2	
REINFORCEMENT BARS		LBS	4400	
CONCRETE PILES		LIN. FT.	588	
TEST PILES - CONCRETE		EACH	1	

THE DESIGNATION 8x2 #7 ETC. INDICATES 8 LINES OF BARS WITH 2 LENGTHS PER LINE.

SOUTH ABUTMENT
 SECTION 83-04111-00-BR
 DEKALB ROAD DISTRICT
 DEKALB COUNTY