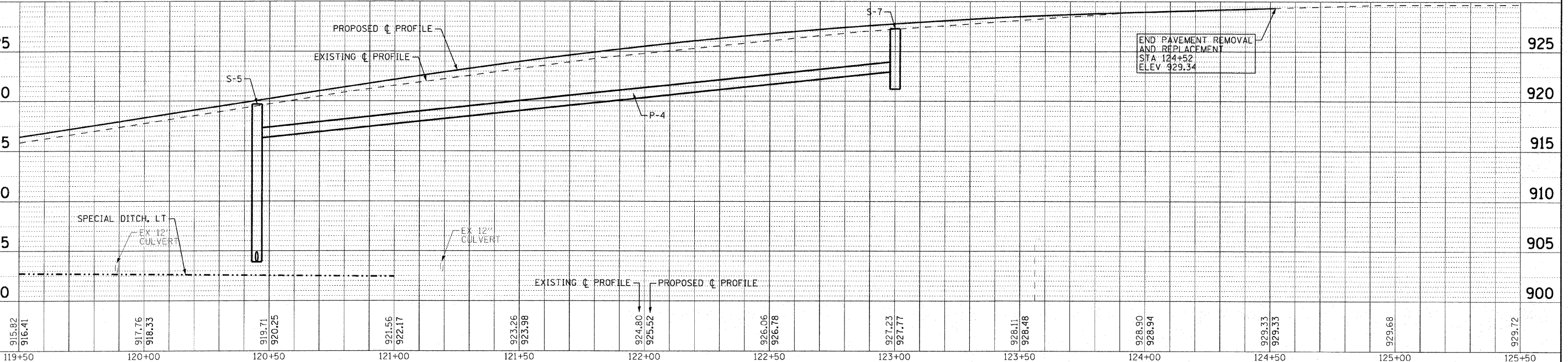


LABEL	STATION	OFFSET (FT)	TYPE	FRAME	ELEVATION	RIM/EP	INVERT
S-5	120+45	18.0 LT	MANHOLE, TYPE A, 5' DIA.	TY 24 F&G	919.69	EP	916.26 12"N; 903.90 12"W
S-6	120+45	70.0 LT	PRC FLARED END SECTION				903.00 12"E
S-7	123+00	24.0 LT	DRAINAGE STRUCTURE SPECIAL	TY 24 F&G	927.29	EP	923.00 12"S

NO.	TYPE	DIA. (IN)	LENGTH (LF)	SLOPE	TBF (CY)
P-3	STORM SEWERS, CLASS A, TYPE 3	12	52	1.73%	13
P-4	STORM SEWERS, CLASS A, TYPE 1	12	255	2.64%	82



	DESIGNED -	DJS	REVISED -	4-14-11 PER CITY REVIEW
	DRAWN -	UKB	REVISED -	
	CHECKED -	RWL	REVISED -	
	DATE -	04-01-2011	REVISED -	

**CITY OF DEKALB, ILLINOIS  
PEACE ROAD  
IMPROVEMENTS**

<b>DRAINAGE AND UTILITY PEACE ROAD</b>		F.A.U. RTE. 5369	SECTION 06-00172-01-WR	COUNTY DeKALB	TOTAL SHEETS 33	SHEET NO. 19
SCALE: H: 1"=20' V: 1"=5'		STA. 119+50 TO STA. 125+50		CONTRACT NO. 87488		
FED. ROAD DIST. NO. 3 (ILLINOIS) FED. AID PROJECT M-5017(045)						

COPYRIGHT © 2005 BY BAXTER & WOODMAN, INC.  
 STATE OF ILLINOIS - PROFESSIONAL DESIGN FIRM  
 LICENSE NO. 184-00181 - EXPIRES 4/30/2011  
 4/24/2011