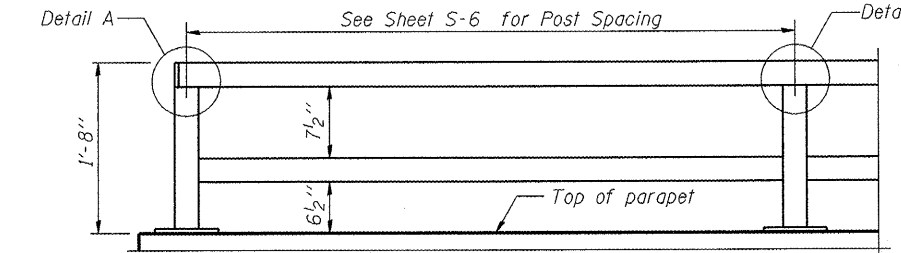


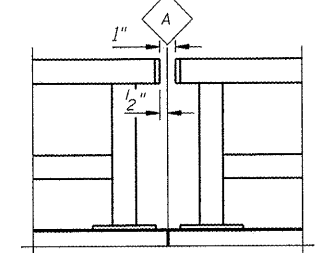
**PARAPET RAILING, SPECIAL**

Looking at inside face  
Northeast corner shown;  
other corners similar

\* Coordinate with Sidewalk Detail  
at end of bridge on Sheet S-2

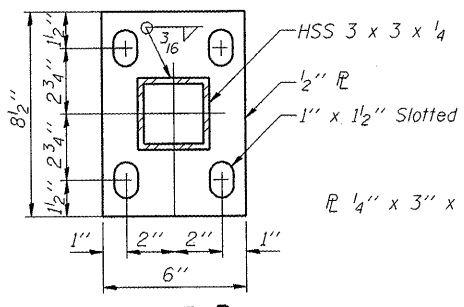


**PARAPET RAILING  
ELEVATION**  
(Inside Face of Two Element Rail)

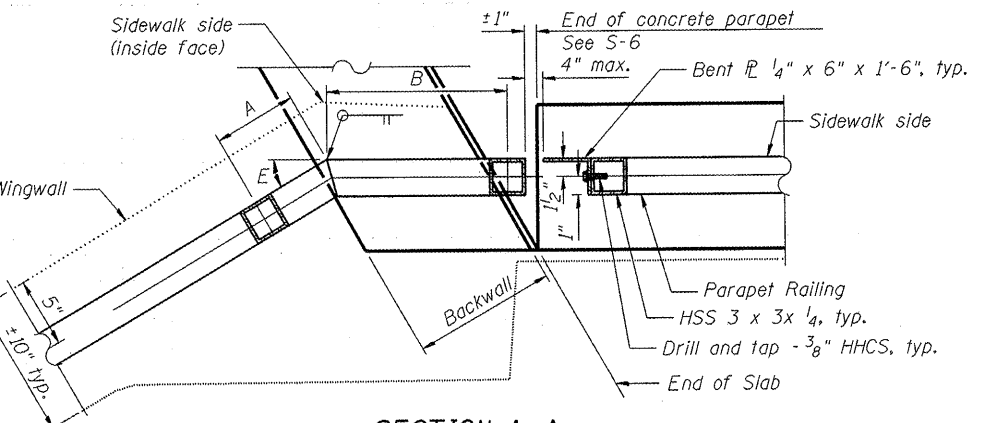


**PARAPET RAILING  
ELEVATION AT EXPANSION JOINT**

See Sheet S-6

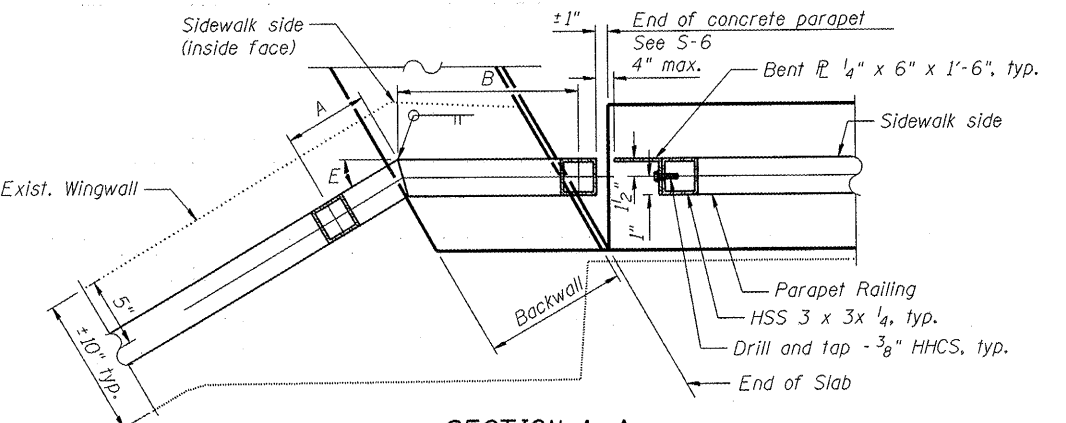


**BASE PLATE**



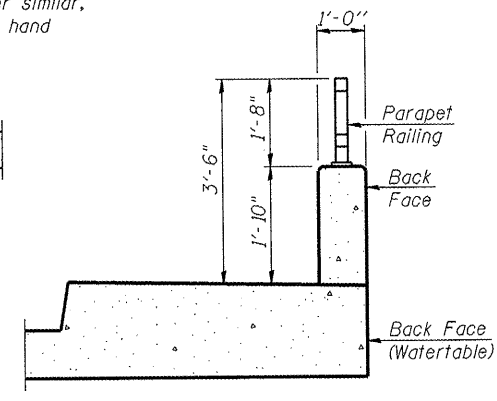
**SECTION A-A**

Northeast Corner shown  
Southeast Corner similar,  
but opposite hand



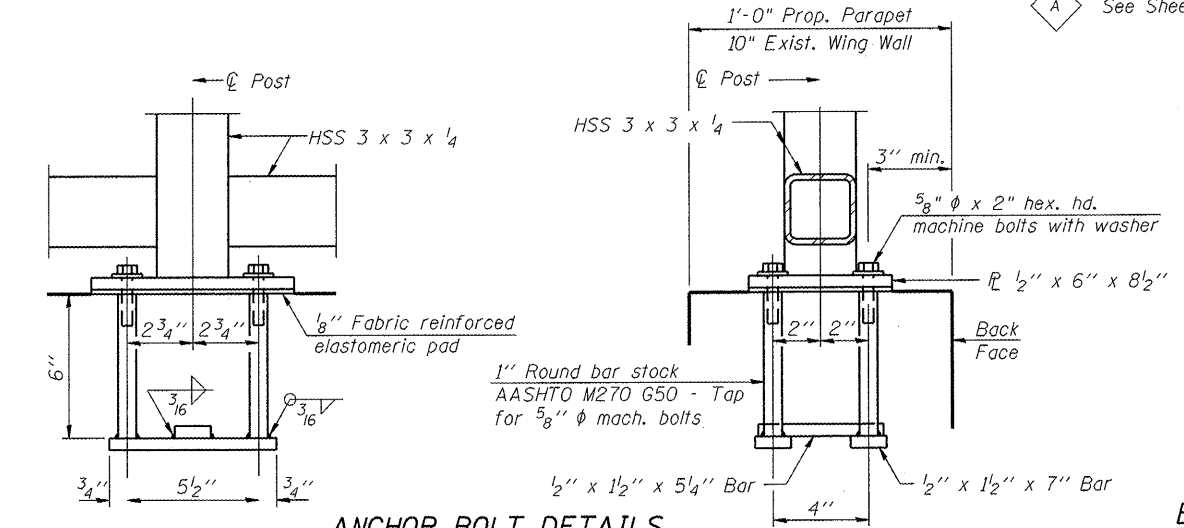
**SECTION A-A**

Northwest Corner shown  
Southeast Corner similar,  
but opposite hand



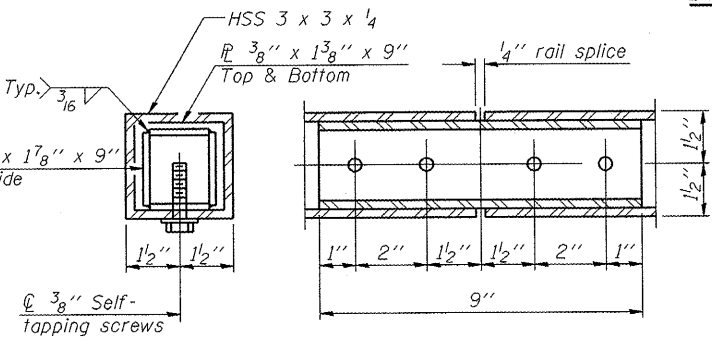
**SECTION THRU SIDEWALK**

All steel rail elements shall be galvanized according  
to Article 509.05 of the Standard Specifications.



**ANCHOR BOLT DETAILS**

In lieu of the cast-in-place anchor device shown, the Contractor has the option of drilling and setting 5/8" φ anchor rods according to Article 509.06 of the Standard Specifications. Embedment shall be according to the manufacturer's specifications. Anchor rods shall be used for Parapet Railings, Special.



**RAIL SPLICE**

**BILL OF MATERIAL**

Item	Unit	Quantity
Parapet Railing	Foot	113
Parapet Railing, Special	Foot	59

**TABLE OF DIMENSIONS**

Location	A	B	C	D	E	F	G
NW Corner	7"	1'-3 1/8"	1 spa. At 10'-0"=10'-0"	5'-8 3/8"	30°20'	749.15	749.03
SE Corner	7"	1'-2 3/4"	1 spa. At 10'-0"=10'-0"	3'-9 1/8"	29°23'	749.15	749.02
NE Corner	9"	2'-3 5/8"	2 spa. At 7'-6"=15'-0"	7'-7"	19°37'	749.16	749.16
SW Corner	11 1/8"	1'-2 1/4"	2 spa. At 7'-6"=15'-0"	8'-5 1/4"	19°51'	749.15	749.04

COMPANY NAME: HRGreen.com  
PROJECT CONTACT: KMF  
CLIENT: OTTECH  
FILE NAME: 06100201-080.dwg  
PLOT DRIVER: pldrvr  
PEN TABLE: S:\Struct\22x34.tbl

**HRGreen.com**  
Illinois Professional Design Firm  
#184-001322

USER NAME = KMF	DESIGNED - KMA	REVISED -
PLOT SCALE = N.T.S.	CHECKED - RGD	REVISED -
PLOT DATE = 3/31/2011	DRAWN - WJH	REVISED -
	CHECKED - 3/31/11	REVISED -

STATE OF ILLINOIS		
DEPARTMENT OF TRANSPORTATION		

**RAILING DETAILS**  
**FAIRVIEW BOULEVARD - S.N. 101-6060**  
SHEET NO. S-8 OF S-11 SHEETS

F.A. RTE. 5141	SECTION 10-00573-00-BR	COUNTY WINNEBAGO	TOTAL SHEETS 20	SHEET NO. 16
CONTRACT NO. 85540			ILLINOIS FED. AID PROJECT	