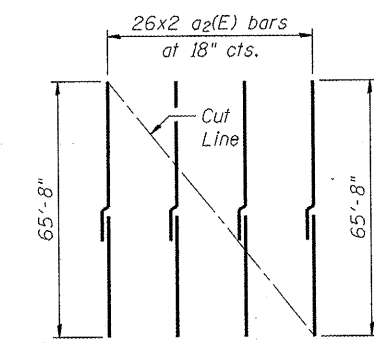


FIELD CUT DIAGRAM
a(E) & a₁(E) bars



FIELD CUT DIAGRAM
a₂(E) bars

- MINIMUM BAR LAP**
- #5 bar = 2'-11"
 - #6 bar = 3'-1"
 - #7 bar = 4'-2"
 - #8 bar = 4'-8" Top Bars
 - #8 bar = 4'-2" Bottom Bars

Notes:
Existing reinforcement shall be cleaned and incorporated into the new construction. Cost included with Removal of Existing Superstructures.

See Sheet S-6 for Superstructure Bill of Material.

See Sheets S-9 and S-10 for additional Abutment back wall reinforcement layout.

See Sheets S-5, S-6 and S-7 for additional Superstructure Details.

Bars indicated thus 1 x 3-#5 etc. indicates 1 line of bars with 3 lengths per line.

* Order a(E), a₁(E) and a₂(E) bars full length. Cut to fit skew and use remainder of bars in opposite end. See Field Cut Diagrams.

COMPANY NAME: HRGreen.com
 PROJECT CONTACT: HRGreen.com
 CLIENT: HRGreen.com
 FILE NAME: HRGreen.com
 PLOT DRIVER: HRGreen.com
 PEN TABLE: HRGreen.com



USER NAME = Karft	DESIGNED - KMA	REVISED -
PLOT SCALE = N.T.S.	CHECKED - RGD	REVISED -
PLOT DATE = 3/31/2011	DRAWN - WJH	REVISED -
	CHECKED - 3/31/11	REVISED -

STATE OF ILLINOIS
DEPARTMENT OF TRANSPORTATION

SUPERSTRUCTURE PLAN
FAIRVIEW BOULEVARD - S.N. 101-6060

F.A. RTE. 5141	SECTION 10-00573-00-BR	COUNTY WINNEBAGO	TOTAL SHEETS 20	SHEET NO. 12
CONTRACT NO. 85540				
ILLINOIS FED. AID PROJECT				

SHEET NO. S-4 OF S-11 SHEETS