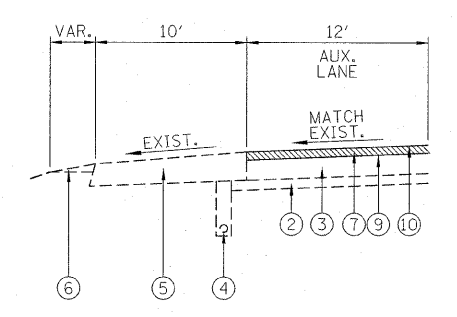


F.A.I. ROUTE 255 PROPOSED TYPICAL SECTION ON TANGENT
 PREVIOUSLY RESURFACED ASPHALT 3 LANE SECTION
 VARIOUS LOCATIONS THROUGHOUT PROJECT LIMITS

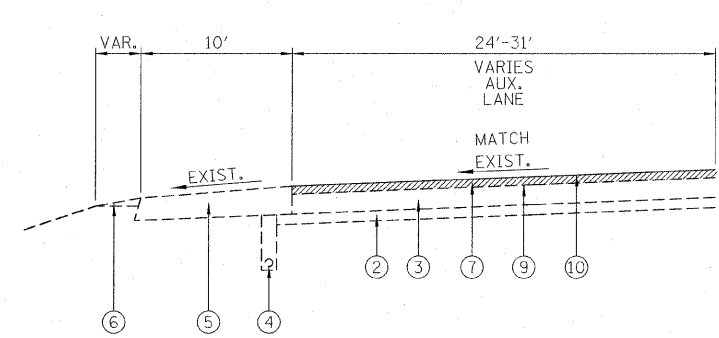
* MEDIAN SLOPES VARY 1:4 TO 1:8

SB 3 LANES RESURFACING
 STA. 1232+26 TO STA. 1233+60
 STA. 1236+24 TO STA. 1237+55
 STA. 1242+08 TO STA. 1243+45
 STA. 1245+38 TO STA. 1246+52

NB 3 LANES RESURFACING
 STA. 1232+48 TO STA. 1233+73
 STA. 1236+37 TO STA. 1237+92
 STA. 1242+36 TO STA. 1243+76
 STA. 1245+72 TO STA. 1246+31
 STA. 1301+48 TO STA. 1302+83



SB ASPHALT AUX. LANES RESURFACING
 STA. 1245+38 TO STA. 1246+52



SB ASPHALT AUX. LANES RESURFACING
 STA. 1242+08 TO STA. 1243+45

LEGEND

- ① EXISTING FINISHED EMBANKMENT SLOPES
- ② EXISTING STABILIZED SUB-BASE 4"
- ③ EXISTING CRPCC PAVEMENT 10"
- ④ EXISTING PIPE UNDERDRAINS 4"
- ⑤ EXISTING BITUMINOUS SHOULDER 10"
- ⑥ EXISTING AGGREGATE SHOULDER TYPE B
- ⑦ HOT-MIX ASPHALT SURFACE REMOVAL, 2-1/4"
- ⑧ PORTLAND CEMENT CONCRETE SURFACE REMOVAL, 2-1/4"
- ⑨ BITUMINOUS MATERIALS (PRIME COAT)
- ⑩ POLYMERIZED HOT-MIX ASPHALT SURFACE COURSE, MIX "E", N90, 2-1/4"

POLYMERIZED HOT-MIX ASPHALT SURFACE COURSE, MIX "E", N90, OVERLAY

FILE NAME = D8378602-SHT04-TYPICAL_W030.dgn	USER NAME = jbaileyl	DESIGNED - D SOMMER	REVISED -	STATE OF ILLINOIS DEPARTMENT OF TRANSPORTATION	PROPOSED TYPICAL SECTIONS	F.A.I. RTE. 255	SECTION 60-(7, 8) RS-1	COUNTY MADISON	TOTAL SHEETS 29	SHEET NO. 7	
PLOT SCALE = 6.0000' / IN.	CHECKED - T NITTLER	DATE - 03/23/11	REVISED -			SHEET NO. 4 OF 6 SHEETS	STA. 1232+26 TO STA. 1354+99	ILLINOIS FED. AID PROJECT			
PLOT DATE = 3/30/2011	DATE - 03/23/11	REVISED -	REVISED -								