

STATE OF ILLINOIS
DEPARTMENT OF TRANSPORTATION
DIVISION OF HIGHWAYS

D-98-038-11

FOR INDEX OF SHEETS, SEE SHEET NO. 2

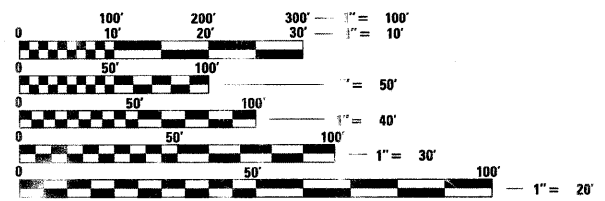
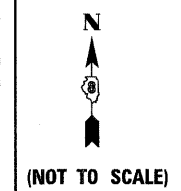
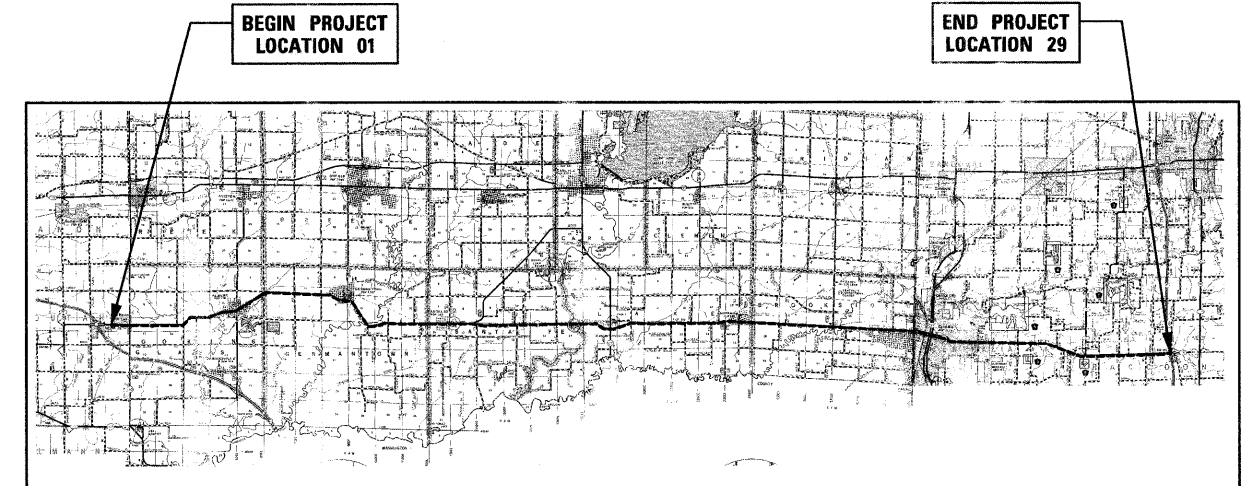
PROPOSED
HIGHWAY PLANS

ROUTE: FAP 805 (IL 161)
SECTION: D8 GUARDRAIL UPDATE 2011
PROJECT: HSIP-0805(074)
TYPE of IMPROVEMENT: GUARDRAIL UPGRADE
VARIOUS COUNTIES

C-98-039-11



Bradley G. Hummert 3/18/2011
BRADLEY G. HUMMERT
 REGISTERED PROFESSIONAL ENGINEER IN ILLINOIS
 NO. 50918 EXPIRES NOV. 30, 2011



ALL SIZE PLANS HAVE BEEN PREPARED USING STANDARD ENGINEERING SCALES. REDUCED SIZED PLANS WILL NOT CONFORM TO STANDARD SCALES. IN MAKING MEASUREMENTS ON REDUCED PLANS, THE ABOVE SCALES MAY BE USED.

J.U.L.I.E.
 JOINT UTILITY LOCATION INFORMATION FOR EXCAVATION
 1-800-892-0123
 811

LOCATION 01	366 FT. = 0.069 MILE	LOCATION 16A	582 FT. = 0.110 MILE
LOCATION 02	498 FT. = 0.094 MILE	LOCATION 16B	972 FT. = 0.184 MILE
LOCATION 03	603 FT. = 0.114 MILE	LOCATION 17	528 FT. = 0.100 MILE
LOCATION 04	- FT. = - MILE	LOCATION 18	1,317 FT. = 0.249 MILE
LOCATION 05	- FT. = - MILE	LOCATION 19	465 FT. = 0.088 MILE
LOCATION 06	471 FT. = 0.089 MILE	LOCATION 20	517 FT. = 0.098 MILE
LOCATION 07	429 FT. = 0.081 MILE	LOCATION 21	559 FT. = 0.106 MILE
LOCATION 08	- FT. = - MILE	LOCATION 22	504 FT. = 0.095 MILE
LOCATION 09	694 FT. = 0.131 MILE	LOCATION 23	667 FT. = 0.126 MILE
LOCATION 10	467 FT. = 0.088 MILE	LOCATION 24	- FT. = - MILE
LOCATION 11	240 FT. = 0.045 MILE	LOCATION 25	767 FT. = 0.145 MILE
LOCATION 12	1,430 FT. = 0.271 MILE	LOCATION 26	339 FT. = 0.064 MILE
LOCATION 13	1,122 FT. = 0.213 MILE	LOCATION 27	- FT. = - MILE
LOCATION 14	1,072 FT. = 0.203 MILE	LOCATION 28	936 FT. = 0.177 MILE
LOCATION 15	566 FT. = 0.107 MILE	LOCATION 29	881 FT. = 0.167 MILE

GROSS LENGTH = 237,600 FT. = 45.000 MILE
 NET LENGTH = 16,993 FT. = 3.218 MILE

PROJECT ENGINEER : **PATTIE LEBEAU, P.E.** 618-346-3179
 PROJECT MANAGER : **CHERYL KEPLAR, P.E.** 618-346-3186

CONTRACT NO 76E78

STATE OF ILLINOIS
 DEPARTMENT OF TRANSPORTATION
 DIVISION OF HIGHWAYS

SUBMITTED *March 24 2011*
My C. Freni
 DEPUTY DIRECTOR OF HIGHWAYS, REGION 5 ENGINEER

May 13 2011
Scott E. Stott, P.E. /a
 Acting ENGINEER OF DESIGN AND ENVIRONMENT

May 13 2011
Christine M. Reed /a
 DIRECTOR OF HIGHWAYS, CHIEF ENGINEER

PRINTED BY THE AUTHORITY
OF THE STATE OF ILLINOIS