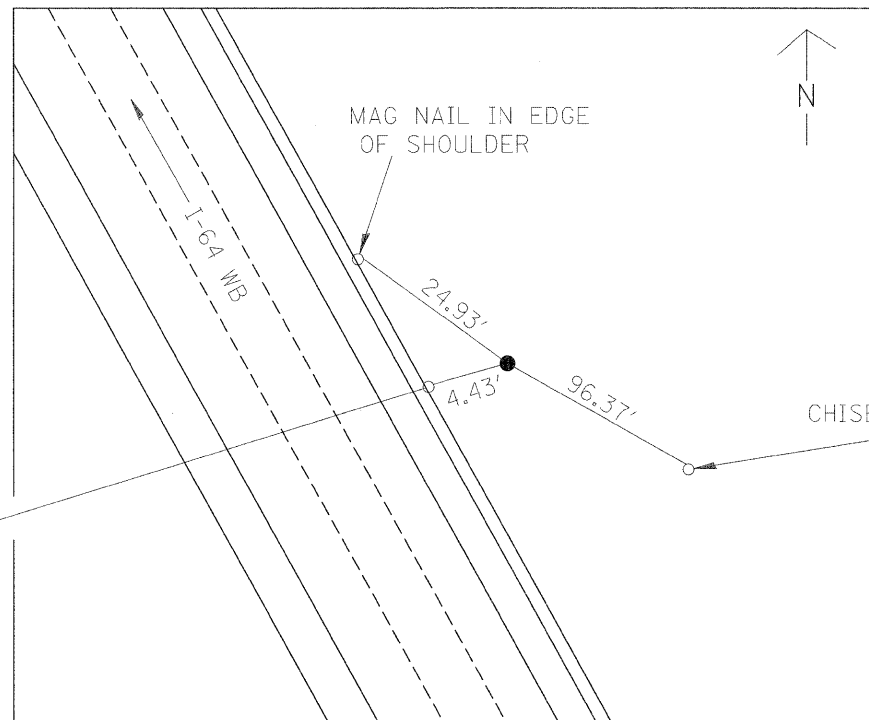


CONTROL PT 73  
 REBAR WITH IDOT CAP  
 STA. 717+13 69' RT  
 N 698,538.3151  
 E 2,361,927.2256

MAG NAIL IN EDGE OF SHOULDER



CONTROL PT 74  
 REBAR WITH IDOT CAP  
 STA. 729+58 71' LT  
 N 697,533.3657  
 E 2,362,676.5725

MAG NAIL IN EDGE OF SHOULDER

CHISELED "X" IN TOP OF NW BOLT  
 IN BASE OF HIGHWAY SIGN

FILE NAME =	USER NAME = #USER#	DESIGNED - ---	REVISED - ---	<b>STATE OF ILLINOIS DEPARTMENT OF TRANSPORTATION</b>	<b>TIE-POINTS AND BENCHMARKS</b>	F.A.I. RTE.	SECTION	COUNTY	TOTAL SHEETS	SHEET NO.	
#FILEL#		DRAWN - ---	REVISED - ---			64	82-6T	ST. CLAIR	53	18	
	PLOT SCALE = #SCALE#	CHECKED - ---	REVISED - ---			CONTRACT NO. 76E69					
	PLOT DATE = #DATE#	DATE - ---	REVISED - ---			FED. ROAD DIST. NO. ILLINOIS FED. AID PROJECT					
					SCALE: _____		SHEET NO. ___ OF ___ SHEETS		STA. _____ TO STA. _____		