

Benchmark JD4:

Chiselled square northerly foundation sign truss over I-55/70 W.B. ramp to I-64 E.B.
35.5' Rt., Sta. 18+35 @ 55S64E, Elev. 403.40

No existing structure, no salvage and no traffic control.

TABLE 1

Station	Offset (Radial)	Elevation A (feet)	Elevation B (feet)	Elevation C (feet)
60+50.00	31'-3" Lt	405.86	406.18	404.44
61+00.00	31'-3" Lt	405.76	404.69	404.20
61+50.00	31'-3" Lt	405.91	403.11	402.06
62+00.00	31'-3" Lt	406.33	401.43	399.67
62+50.00	31'-3" Lt	407.01	399.96	400.41
63+00.00	31'-3" Lt	408.00	397.75	399.17
63+50.00	31'-3" Lt	409.53	397.56	398.29
64+00.00	31'-3" Lt	410.98	396.67	397.36
64+50.00	31'-3" Lt	412.70	396.29	397.06
65+00.00	31'-3" Lt	414.65	396.12	396.74
65+50.00	31'-3" Lt	416.65	395.84	396.82
66+00.00	31'-3" Lt	418.65	396.43	397.40
66+50.00	31'-3" Lt	420.65	397.24	398.20
67+00.00	31'-3" Lt	422.65	398.76	399.78
67+50.00	31'-3" Lt	424.65	402.85	403.98
68+00.00	31'-3" Lt	426.65	414.83	415.97
68+50.00	31'-3" Lt	428.65	417.79	417.79
69+00.00	31'-3" Lt	430.65	417.01	417.01
69+50.00	31'-3" Lt	432.65	416.64	416.64
70+00.00	31'-3" Lt	434.65	415.38	415.38
70+50.00	31'-3" Lt	436.65	413.21	413.21
71+00.00	31'-3" Lt	438.65	412.04	412.04
71+50.00	31'-3" Lt	440.65	412.60	412.60
72+00.00	31'-3" Lt	442.46	414.95	413.35
72+50.00	31'-3" Lt	444.14	419.91	413.19
73+00.00	31'-3" Lt	446.18	424.42	414.46
73+50.00	31'-3" Lt	448.43	428.62	417.06
74+00.00	31'-3" Lt	450.59	442.62	422.96
74+11.55	31'-3" Lt	451.05	444.05	422.92

El. A - Top of Exposed Panel (Vertical curve between Sta. 60+50 and Sta. 64+80)
El. B - Finished Grade Line at Front Face of Wall
El. C - Existing Ground Line at Front Face of Wall

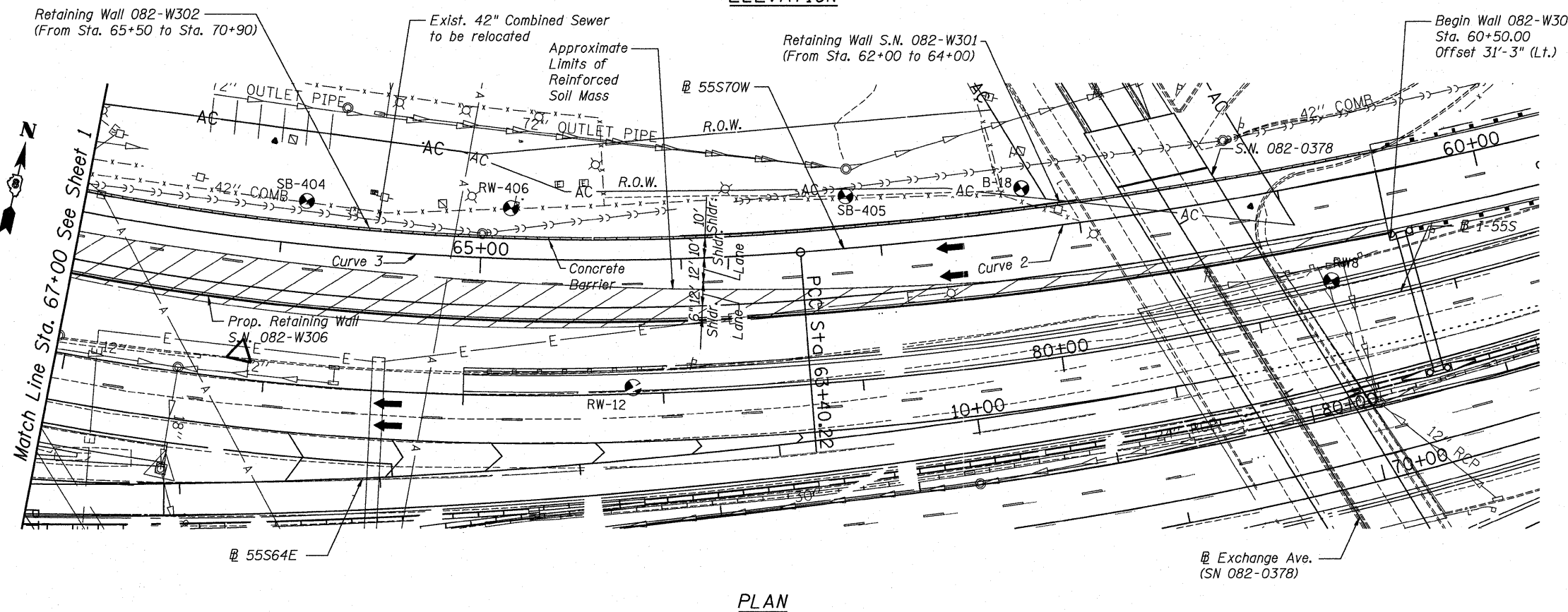
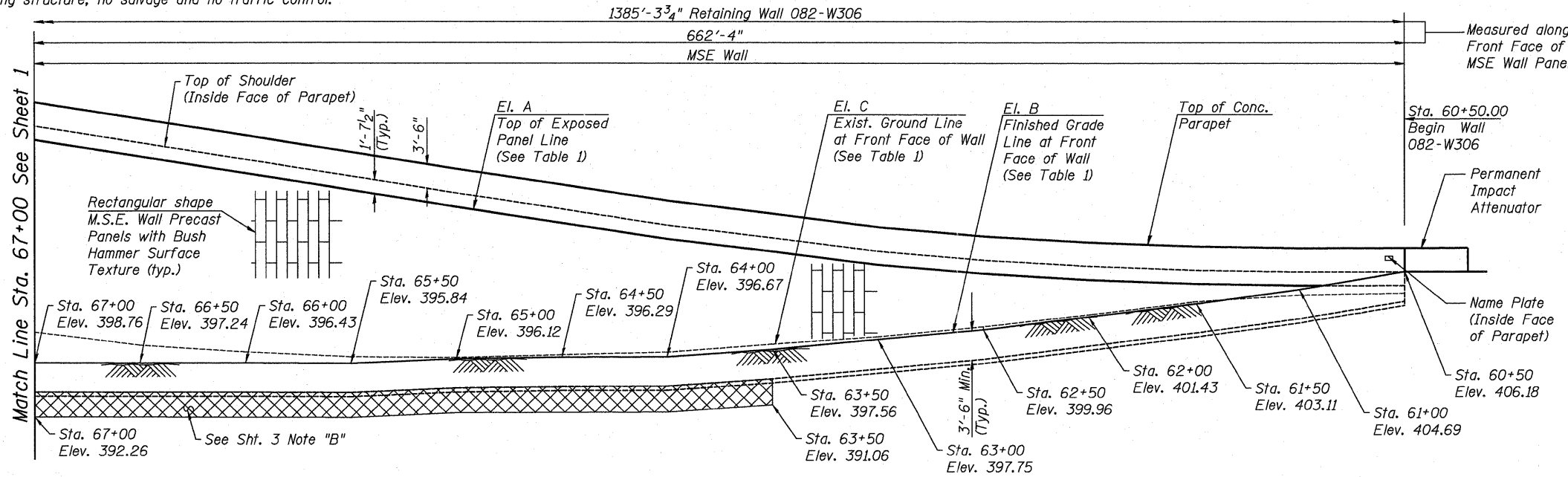
Stations and Offsets are measured from the Baseline of 55S70W to the Front Face of the Wall Panels

CURVE DATA

Curve: 55S70W-2
 $\Delta = 14^{\circ}-29'-28.84"$ (RT)
 $D = 2^{\circ}-29'-24.14"$
 $T = 292.5476'$
 $L = 581.9728'$
 $E = 18.5226'$
 $R = 2301.00'$
 $S.E. = 4\%$
 ATTAINMENT T.R. = 0
 ATTAINMENT S.E. RUN = 36'
 P.C. = Sta. 57+58.25
 P.T. = Sta. 63+40.22
 P.I. = Sta. 60+50.80

CURVE DATA

Curve: 55S70W-3
 $\Delta = 36^{\circ}-19'-13.31"$ (RT)
 $D = 4^{\circ}-16'-32.90"$
 $T = 439.5379'$
 $L = 849.4393'$
 $E = 70.2459'$
 $R = 1340.00'$
 $S.E. = 5.3\%$
 ATTAINMENT T.R. = 0
 ATTAINMENT S.E. RUN = 47'
 P.C. = Sta. 63+40.22
 P.T. = Sta. 71+89.66
 P.I. = Sta. 67+79.76
 REMOVAL S.E. RUN = 65'
 REMOVAL T.R. = 0



082-W306_76C75_GeneralPlan_082.dgn