

**DESIGN SPECIFICATIONS**

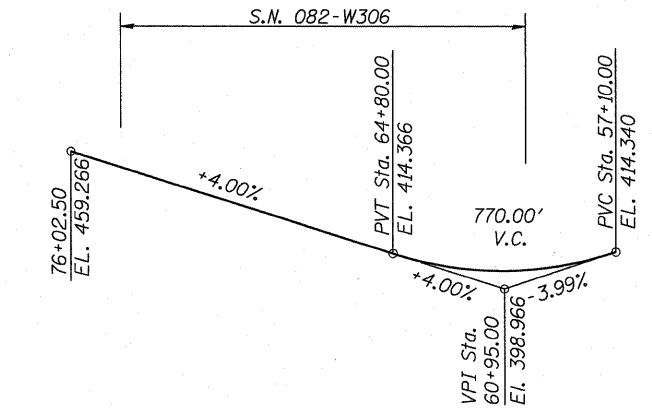
2002 AASHTO - Load Factor Design

**DESIGN STRESSES**

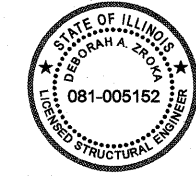
f'c = 3,500 psi  
 f'c = 4,500 psi (Precast Panel)  
 fy = 60,000 psi (Reinforcement)

**INDEX of SHEETS**

1. General Plan I
2. General Plan II
3. General Data & Typical Sections
4. Parapet & Anchorage Slab
5. Details
- 6.-18. Boring Logs



**PROFILE GRADE 55S70W**  
 (@ 55S70W)



Signature: *Deborah A. Zook*  
 Date: 03-18-2011  
 November 30, 2012  
 Expires

**Notes:**  
 See sheet 3 for Notes A, B, C & D.  
 See sheet 2 for Table 1.

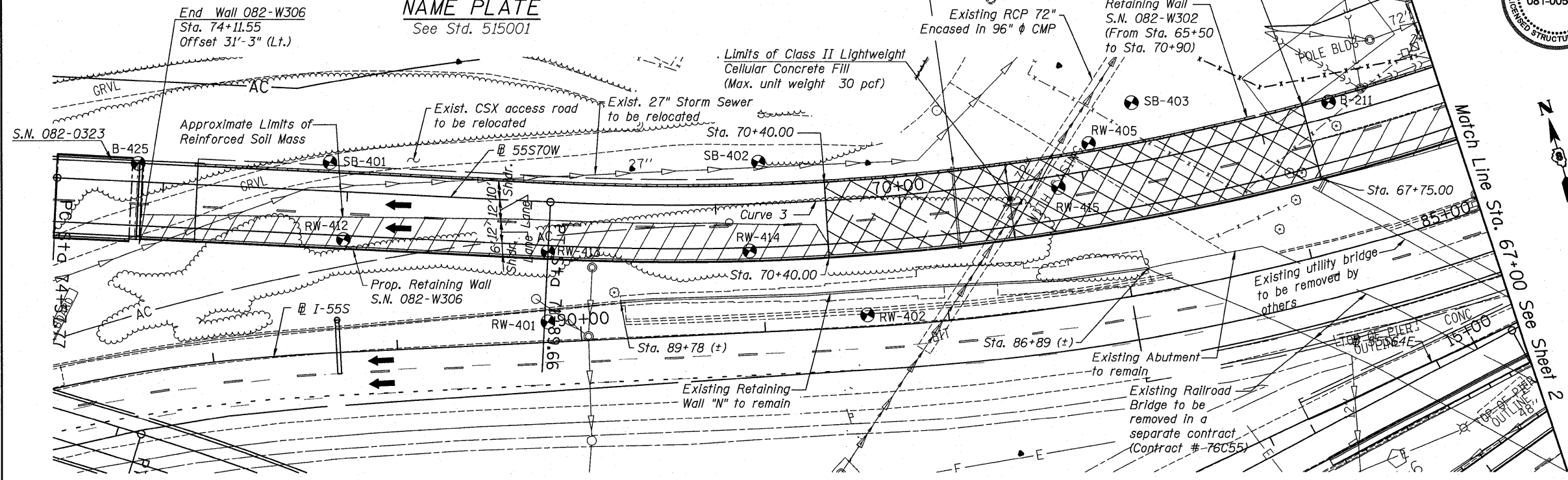
STATION 60+50.00  
 BUILT BY  
 STATE OF ILLINOIS  
 F.A.I. RTE. 70 SEC.82-1-1HB  
 LOADING HS-20  
 STRUCTURE NO. 082-W306

**APPROVED**  
 FOR STRUCTURAL ADEQUACY ONLY

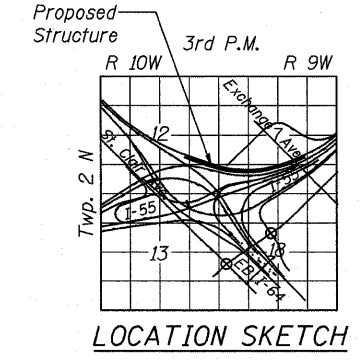
*Deborah A. Zook*  
 ENGINEER OF BRIDGES AND STRUCTURES

**NAME PLATE**  
 See Std. 515001

**ELEVATION**



**PLAN**



**GENERAL PLAN & ELEVATION**  
 F.A.I. RTE. 70  
 (I-55/I-64 TRI-LEVEL)  
 SECTION 82-1-1HB  
 ST. CLAIR COUNTY  
 STA. 60+50.00 TO 74+11.55  
 STRUCTURE NO. 082-W306



USER NAME = Scott Whitney	DESIGNED MJP	REVISED -
DRAWN JHR	REVISED -	
CHECKED MJP	REVISED -	
DATE 3-18-2011	REVISED -	

**STATE OF ILLINOIS**  
**DEPARTMENT OF TRANSPORTATION**

<b>RETAINING WALL 082-W306</b>			
<b>GENERAL PLAN I</b>			
SCALE: N.T.S.	SHEET NO. 1	OF 18 SHEETS	STA. 67+00.00 TO STA. 74+11.55

F.A.I. RTE. 70	SECTION 82-1-1HB	COUNTY ST. CLAIR	TOTAL SHEETS 319	SHEET NO. 254
ILLINOIS FED. AID PROJECT				