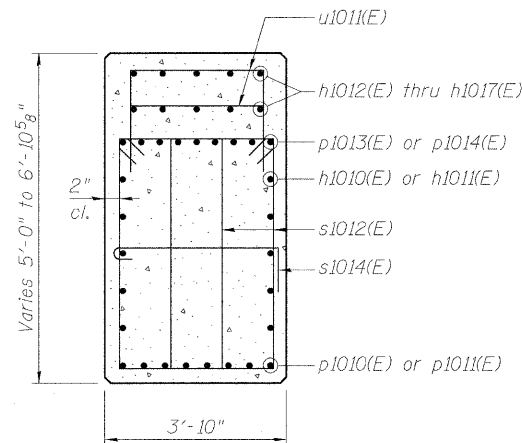
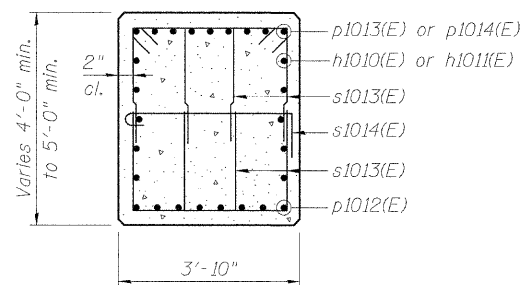


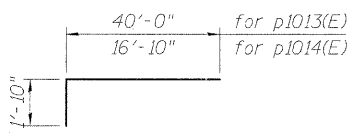
FOOTING PLAN



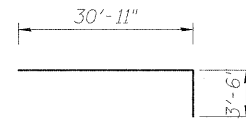
SEC. A-A



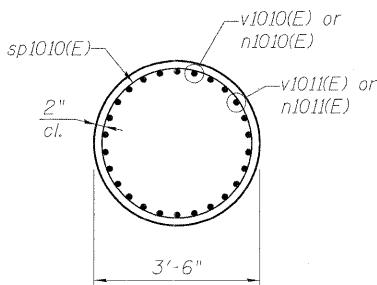
SEC. B-B



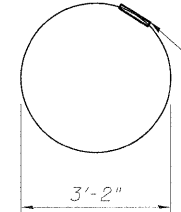
BAR p1013(E) & p1014(E)



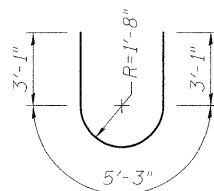
BAR w1010(E)



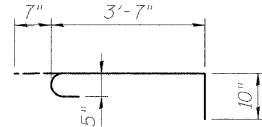
SEC. C-C



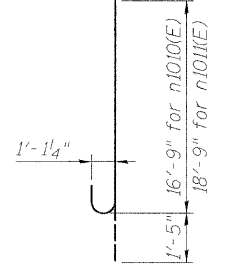
BAR s1015(E)



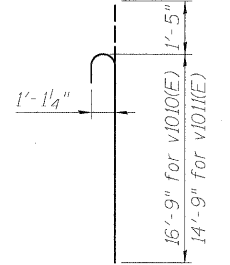
BAR u1010(E)



BAR s1014(E)



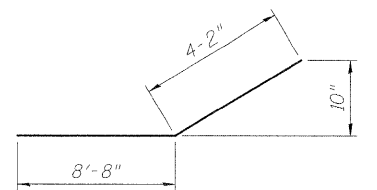
BAR n1010(E) & n1011(E)



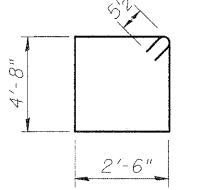
BAR v1010(E) & v1011(E)

A & B DIMENSIONS

Bar	A	B
s1013(E)	2'-6"	3'-8"
u1011(E)	3'-6"	1'-0"
t1010(E)	19'-8"	3'-4"
t1011(E)	19'-8"	3'-4"



BAR p1012(E)



BAR s1012(E)

BILL OF MATERIAL

Bar	No.	Size	Length	Shape
h1010(E)	10	#5	40'-0"	—
h1011(E)	10	#5	16'-6"	—
h1012(E)	5	#5	40'-0"	—
h1013(E)	5	#5	11'-5"	—
h1015(E)	5	#5	17'-3"	—
h1016(E)	5	#5	20'-5"	—
h1017(E)	5	#5	6'-11"	—
n1010(E)	65	#10	18'-2"	—
n1011(E)	65	#10	20'-2"	—
p1010(E)	8	#9	40'-0"	—
p1011(E)	8	#9	12'-10"	—
p1012(E)	16	#8	12'-10"	—
p1013(E)	9	#10	41'-10"	—
p1014(E)	9	#10	18'-8"	—
s1012(E)	160	#5	15'-3"	—
s1013(E)	240	#5	9'-10"	—
s1014(E)	57	#5	5'-0"	—
s1015(E)	70	#5	9'-11 3/8"	—
sp1010(E)	5	#5	26'-11"	—
t1010(E)	71	#6	26'-4"	—
t1011(E)	102	#10	26'-4"	—
u1010(E)	14	#6	11'-5"	—
u1011(E)	95	#5	5'-6"	—
v1010(E)	65	#10	18'-2"	—
v1011(E)	65	#10	16'-2"	—
w1010(E)	116	#6	34'-5"	—

** Length is Height of Spiral.

PILE DATA

Type: HP14x89
 Nominal Required Bearing: 500 kips
 Factored Resistance Available: 250 kips
 Estimated Length: 113 ft.
 Number of Production Piles: 60
 Number of Test Piles: 0



USER NAME = BheshtA	DESIGNED - EJO	REVISED -
PLOT SCALE = 1/4" = 1'-0"	DRAWN - JHR	REVISED -
PLOT DATE = #DATE*	CHECKED - DB	REVISED -
	DATE - 05-02-11	REVISED -

**STATE OF ILLINOIS
 DEPARTMENT OF TRANSPORTATION**

**PIER 10 DETAILS - S.N. 082-0325
 I-70W OVER I-55, CSX & KCS RAILROADS**

SCALE: NONE SHEET NO. S-121 OF S-138 SHEETS STA. TO STA.

F.A.I. RTE.	SECTION	COUNTY	TOTAL SHEETS	SHEET NO.
TO	82-1-B-1	ST. CLAIR	319	236
S.N. 082-0323 & S.N. 082-0325			CONTRACT NO. 76C75	
FED. ROAD DIST. NO.			ILLINOIS FED. AID PROJECT	

P:\P020468\9802_CAD\9802_CAD\Drawings\76C020_Mastef_Correl\dated\Structural\882-0323\Sheet\SI21_082-0325_76C75_Pier10B.dgn