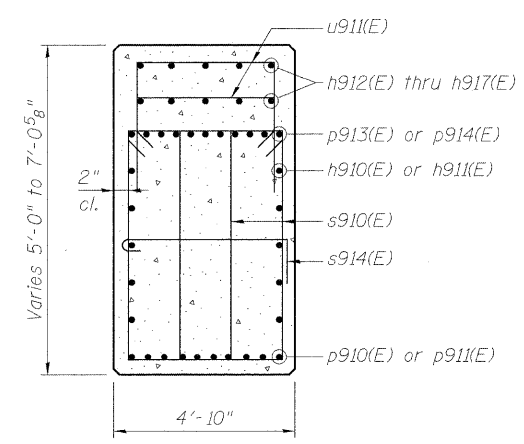
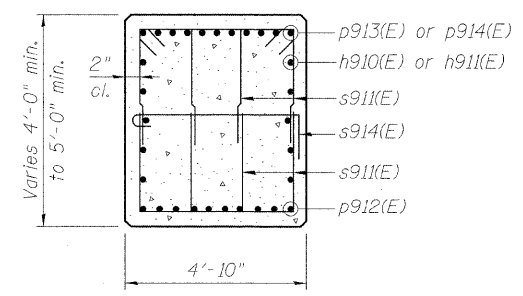


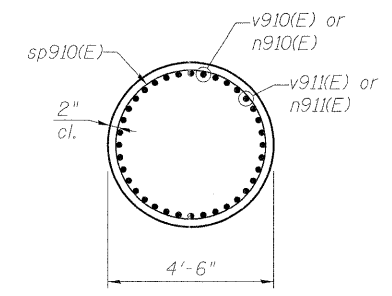
FOOTING PLAN



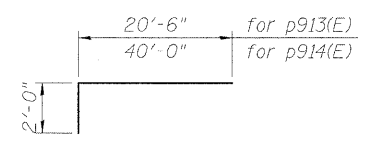
SEC. A-A



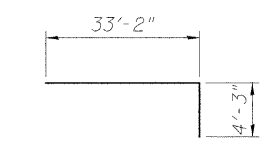
SEC. B-B



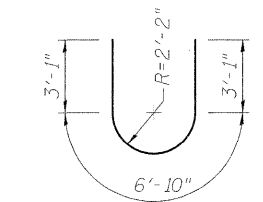
SEC. C-C



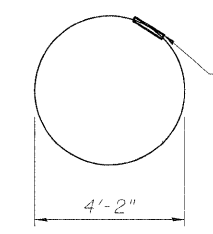
BAR p913(E) & p914(E)



BAR w910(E)



BAR u910(E)



BAR s915(E)

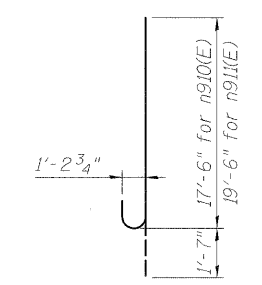
Shop welded per AWS D1.4 or mechanically spliced; cost included in Reinforcement Bars Epoxy Coated

** Length is Height of Spiral.

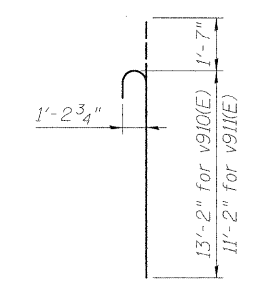
PILE DATA

Type: HP14x89
 Nominal Required Bearing: 500 kips
 Factored Resistance Available: 250 kips
 Estimated Length: 112 ft.
 Number of Production Piles: 71
 Number of Test Piles: 1

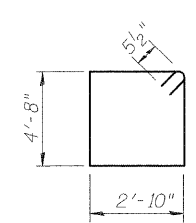
BAR s914(E)



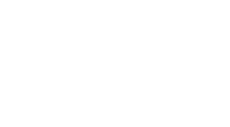
BAR n910(E) & n911(E)



BAR v910(E) & v911(E)

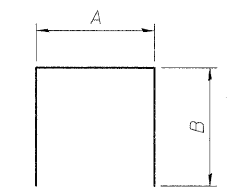
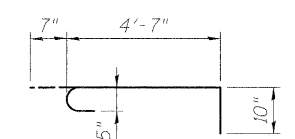


BAR s910(E)



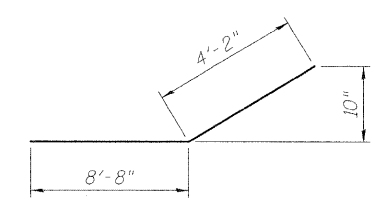
BAR s911(E)

A & B DIMENSIONS



Bar	A	B
s911(E)	2'-10"	3'-8"
u911(E)	4'-6"	1'-0"
t910(E)	19'-8"	4'-1"
t911(E)	19'-8"	4'-1"

BARS s911(E), u911(E) t910(E), t911(E)



BAR p912(E)

BILL OF MATERIAL

Bar	No.	Size	Length	Shape
h910(E)	10	#5	20'-2"	—
h911(E)	10	#5	40'-0"	—
h912(E)	5	#5	40'-0"	—
h913(E)	5	#5	15'-6"	—
h915(E)	5	#5	17'-3"	—
h916(E)	5	#5	24'-8"	—
h917(E)	5	#5	10'-3"	—
n910(E)	90	#11	19'-1"	C
n911(E)	90	#11	21'-1"	C
p910(E)	10	#11	17'-6"	—
p911(E)	10	#11	40'-0"	—
p912(E)	20	#8	12'-10"	—
p913(E)	11	#11	22'-6"	—
p914(E)	11	#11	42'-0"	—
s910(E)	208	#5	15'-11"	□
s911(E)	328	#5	10'-2"	□
s914(E)	61	#5	6'-0"	C
s915(E)	90	#5	13'-1"	O
sp910(E)	5	#5	23'-0"	∩∩
t910(E)	76	#6	27'-10"	—
t911(E)	123	#10	27'-10"	—
u910(E)	14	#6	13'-0"	U
u911(E)	109	#5	6'-6"	—
v910(E)	90	#11	14'-9"	C
v911(E)	90	#11	12'-9"	C
w910(E)	94	#7	37'-5"	—

Item	Unit	Quantity
Concrete Structures	Cu. Yd.	358.4
Reinforcement Bars, Epoxy Coated	Pound	81,990
Furnishing Steel Piles, HP14x89	Foot	7952
Driving Piles	Foot	7952
Test Pile Steel HP14x89	Each	1
Pile Shoes	Each	72
Mechanical Splicers	Each	216



USER NAME = BhattA	DESIGNED - EJO	REVISED -
PLOT SCALE = @1" = 10'	DRAWN - MRK	REVISED -
PLOT DATE = #DATE*	CHECKED - DB	REVISED -
	DATE - 05-02-11	REVISED -

**STATE OF ILLINOIS
 DEPARTMENT OF TRANSPORTATION**

PIER 9 DETAILS - S.N. 082-0325
I-70W OVER I-55, CSX & KCS RAILROADS
 SCALE: NONE SHEET NO. S-119 OF S-138 SHEETS STA. TO STA.

F.A.I. RTE.	SECTION	COUNTY	TOTAL SHEETS	SHEET NO.
70	82-1-B-1	ST. CLAIR	319	234
S.N. 082-0323 & S.N. 082-0325			CONTRACT NO. 76C75	
FED. ROAD DIST. NO.			ILLINOIS FED. AID PROJECT	

P:\P0004668\980-CAD\980LDrawings\76C000-Master-Consolidated\Structural\082-0323-Sheets\S119_082-0325_76C75_Pier9B.dgn