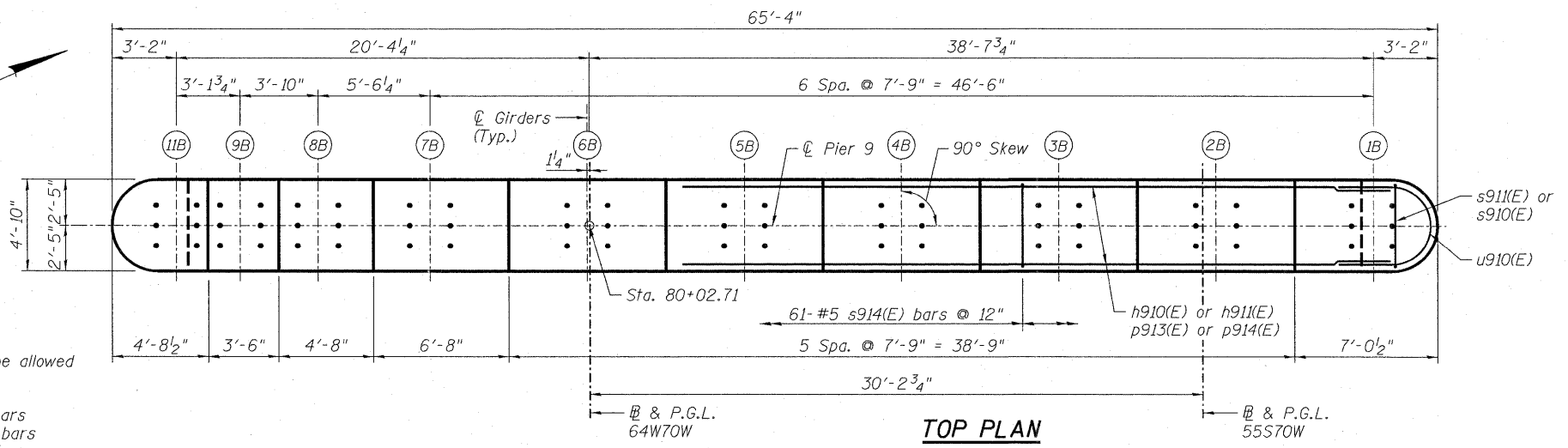


NOTES:

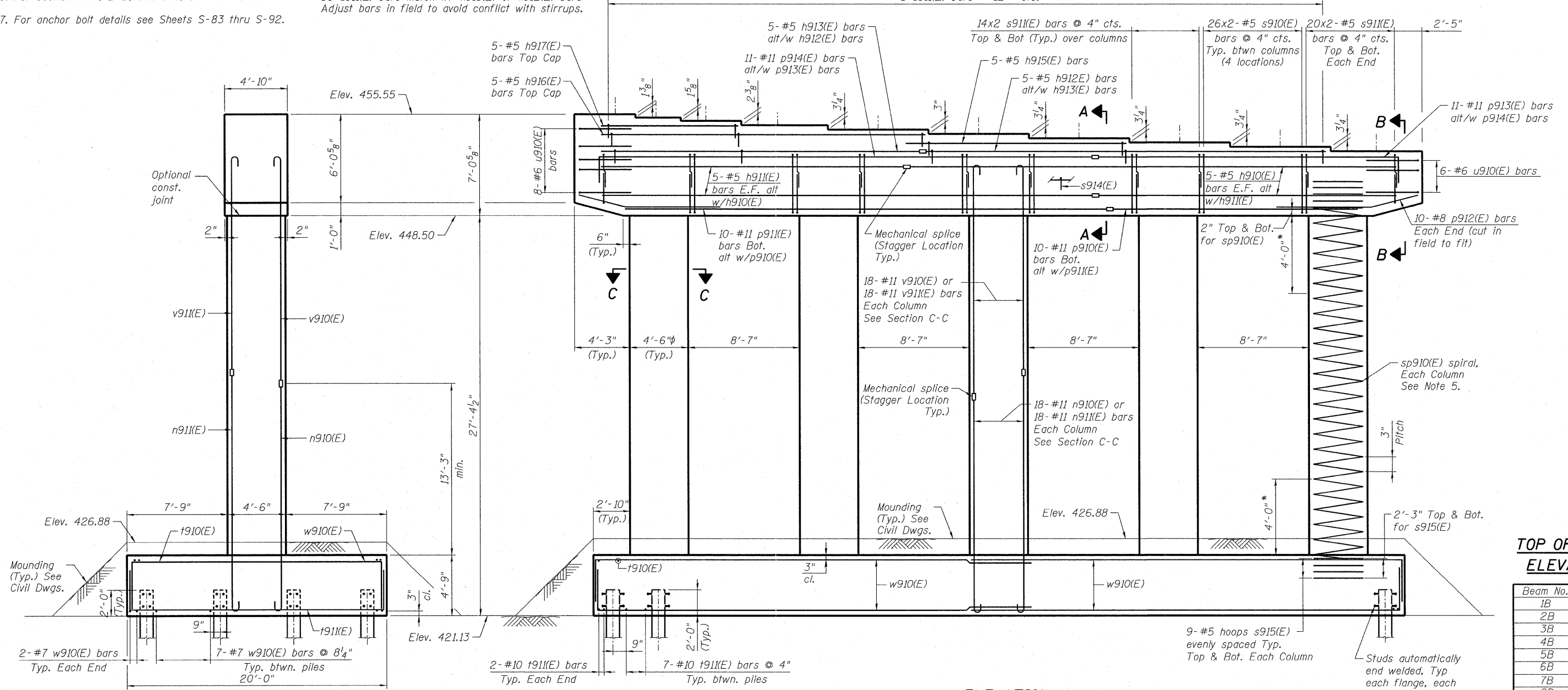
- Space reinforcement in cap to miss anchor bolts.
- Pour steps monolithically with cap.
- For details of piles, see sheet S-122.
- Bars indicated thus 20 x 3-#5 etc. indicates 20 lines of bars with 3 lengths per line.
- #5 sp910(E) spiral, each column
 - Provide 1/2 extra turns, shop welded together per AWS D1.4 top and bottom. Extend spiral 2" into pier cap & footing. Provide 4-#4 spacers or equivalent.
 - When splicing spiral reinforcement is necessary, the spiral shall be provided with 1/2 extra turns at the ends to be spliced. These additional turns shall either be welded together according to AWS D1.4, or shall both terminate with a 135° standard hook.
- For section A-A, B-B, and C-C, see next sheet.
- For anchor bolt details see Sheets S-83 thru S-92.

* Splicing of reinforcement will not be allowed in this region.

** 11-u911(E) bars match w/ h917(E) bars
 25-u911(E) bars match w/ h916(E) bars
 17-u911(E) bars match w/ h915(E) bars
 56-u911(E) bars match w/ h913(E) or h912(E) bars
 Adjust bars in field to avoid conflict with stirrups.



TOP PLAN



ELEVATION
(Looking Upstation)



END VIEW

TOP OF SEAT ELEVATION

Beam No.	Seat Elev.
1B	453.50
2B	453.77
3B	454.04
4B	454.31
5B	454.58
6B	454.83
7B	455.10
8B	455.30
9B	455.44
11B	455.55



USER NAME = BhattA	DESIGNED - EJO	REVISED -
PLLOT SCALE = 8x2 1/2" = 1"	DRAWN - MRK	REVISED -
PLLOT DATE = #DATE#	CHECKED -	REVISED -
	DATE - 03/18/2011	REVISED -

STATE OF ILLINOIS
DEPARTMENT OF TRANSPORTATION

PIER 9 - S.N. 082-0325
I-70W OVER I-55, CSX & KCS RAILROADS

F.A.I. RTE. 70	SECTION 82-1-B-1	COUNTY ST. CLAIR	TOTAL SHEETS 319	SHEET NO. 233
S.N. 082-0323 & S.N. 082-0325		CONTRACT NO. 76C75		
FED. ROAD DIST. NO.		ILLINOIS FED. AID PROJECT		

P:\66846699\988_CAD\981_D-rwings\76C75\Master-Conn\I-70W\Structure\082-0323\Sheet\118_082-0325_76C75_Pier9A.dwg