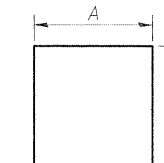


A & B DIMENSIONS

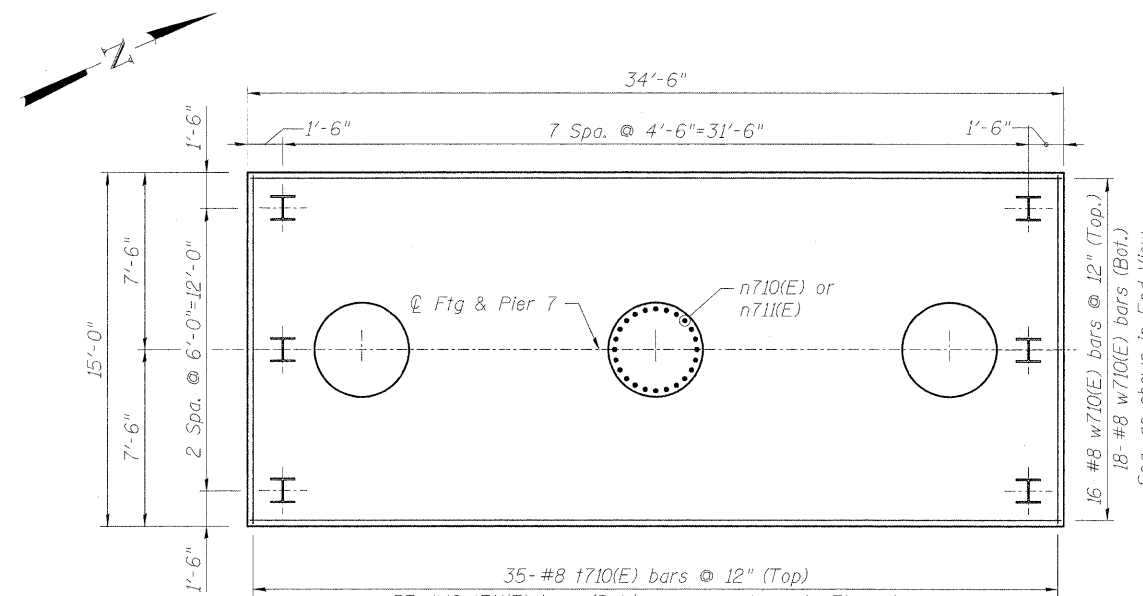


Bar	A	B
p710(E)	36'-10"	2'-0"
s711(E)	5'-7"	3'-8"
t710(E)	14'-8"	3'-6"
t711(E)	14'-8"	3'-6"
u710(E)	7'-6"	3'-1"
u711(E)	3'-8"	1'-0"
w710(E)	34'-2"	3'-6"

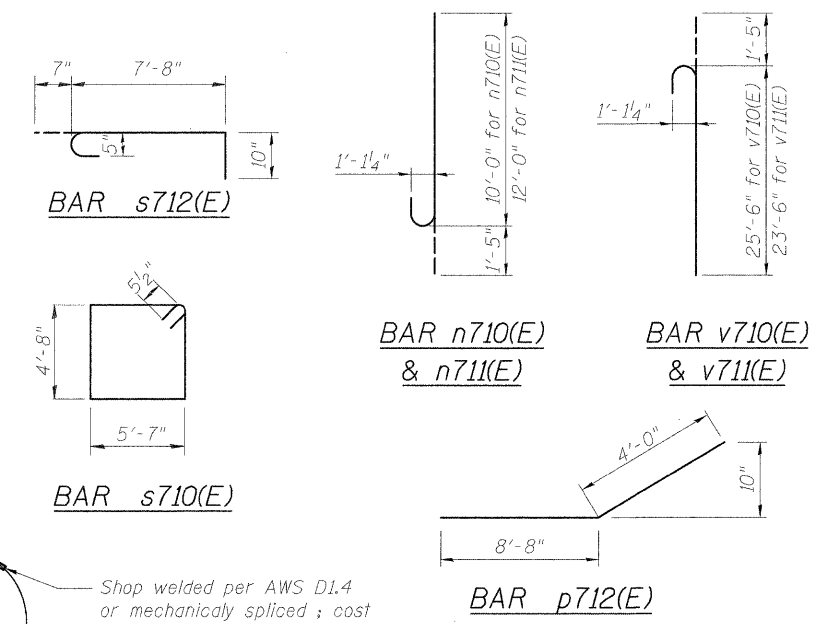
BARS p710(E), s711(E), t710(E), t711(E)
u710(E), u711(E), & w710(E)

BILL OF MATERIAL

Bar	No.	Size	Length	Shape
h710(E)	10	#5	36'-10"	—
h711(E)	5	#5	18'-3"	—
h712(E)	5	#5	14'-3"	—
n710(E)	39	#10	11'-5"	C
n711(E)	39	#10	13'-5"	C
p710(E)	9	#10	40'-10"	□
p711(E)	9	#10	29'-9"	—
p712(E)	18	#8	12'-8"	—
s710(E)	68	#5	21'-5"	□
s711(E)	172	#5	12'-11"	□
s712(E)	38	#5	9'-1"	C
s713(E)	48	#5	11'-6"	○
** sp710(E)	3	#5	28'-6"	ΛΛ
t710(E)	35	#8	21'-8"	□
t711(E)	53	#10	21'-8"	□
u710(E)	13	#6	13'-8"	□
u711(E)	34	#5	5'-8"	□
v710(E)	39	#10	26'-11"	C
v711(E)	39	#10	24'-11"	C
w710(E)	34	#8	41'-2"	□
Item	Unit	Quantity		
Concrete Structures	Cu. Yd.	178.9		
Reinforcement Bars, Epoxy Coated	Pound	36,820		
Furnishing Steel Piles, HP14x89	Foot	2576		
Driving Piles	Foot	2576		
Test Pile Steel HP14x89	Each	1		
Pile Shoes	Each	24		
Concrete Sealer	Sq Ft	2927		
Mechanical Splicers	Each	78		

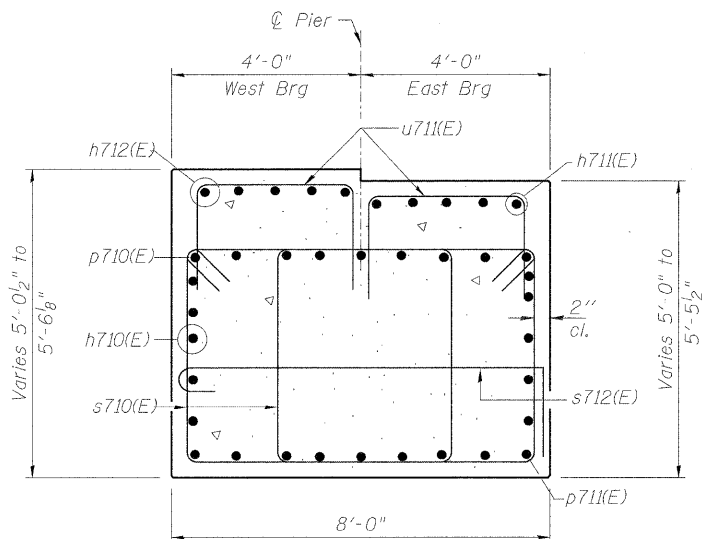


FOOTING PLAN

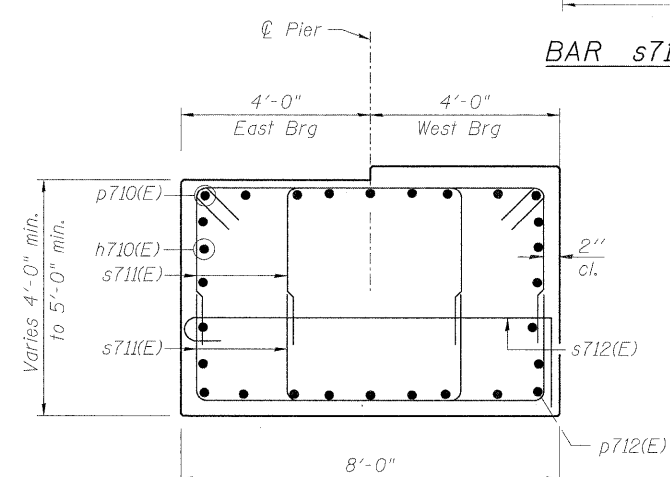


Shop welded per AWS D1.4 or mechanically spliced; cost included in Reinforcement Bars Epoxy Coated

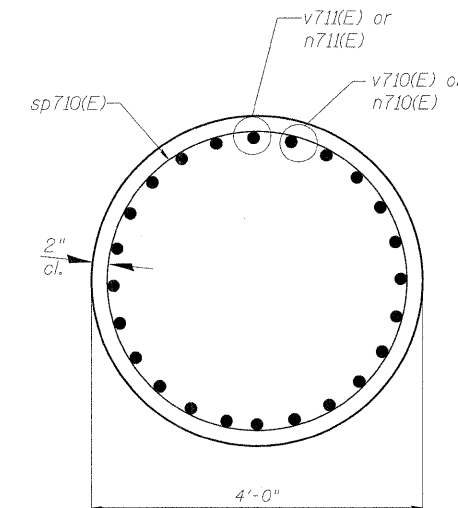
BAR s713(E)



SEC. A-A



SEC. B-B



SEC. C-C

PILE DATA

Type: HP14x89
Nominal Required Bearing: 500 kips
Factored Resistance Available: 250 kips
Estimated Length: 112 ft.
Number of Production Piles: 23
Number of Test Piles: 1

** Length is height of spiral.



USER NAME = BhattA	DESIGNED - ATB	REVISED -
PLOT SCALE = 1/8" = 1' / in.	DRAWN - PMM	REVISED -
PLOT DATE = *DATE*	CHECKED - ATB	REVISED -
	DATE - 05-02-11	REVISED -

STATE OF ILLINOIS
DEPARTMENT OF TRANSPORTATION

PIER 7 DETAILS - S.N. 082-0325
I-70W OVER I-55, CSX & KCS RAILROADS

F.A.I. RTE. 70	SECTION 82-1-B-1	COUNTY ST. CLAIR	TOTAL SHEETS 319	SHEET NO. 230
S.N. 082-0323 & S.N. 082-0325		CONTRACT NO. 76C75		
FED. ROAD DIST. NO.		ILLINOIS FED. AID PROJECT		

P:\P0804660\9000_CAD\9000_LDrawings\76C000_Master\Consolidated\Structural\082-0323\Sheets\SI15_082-0325_76C75_Pier7B.dgn