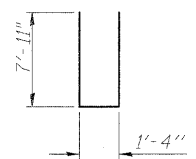
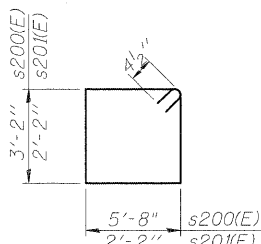


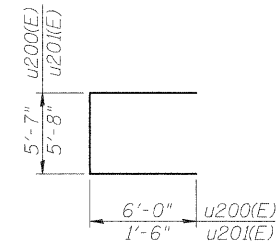
BAR h202(E)



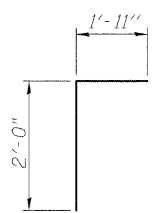
BAR n200(E)



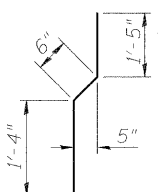
BARS s200(E) & s201(E)



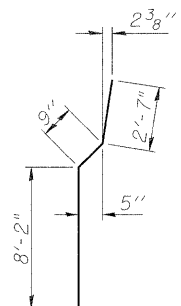
BAR u200(E) & u201(E)



BAR v200(E)

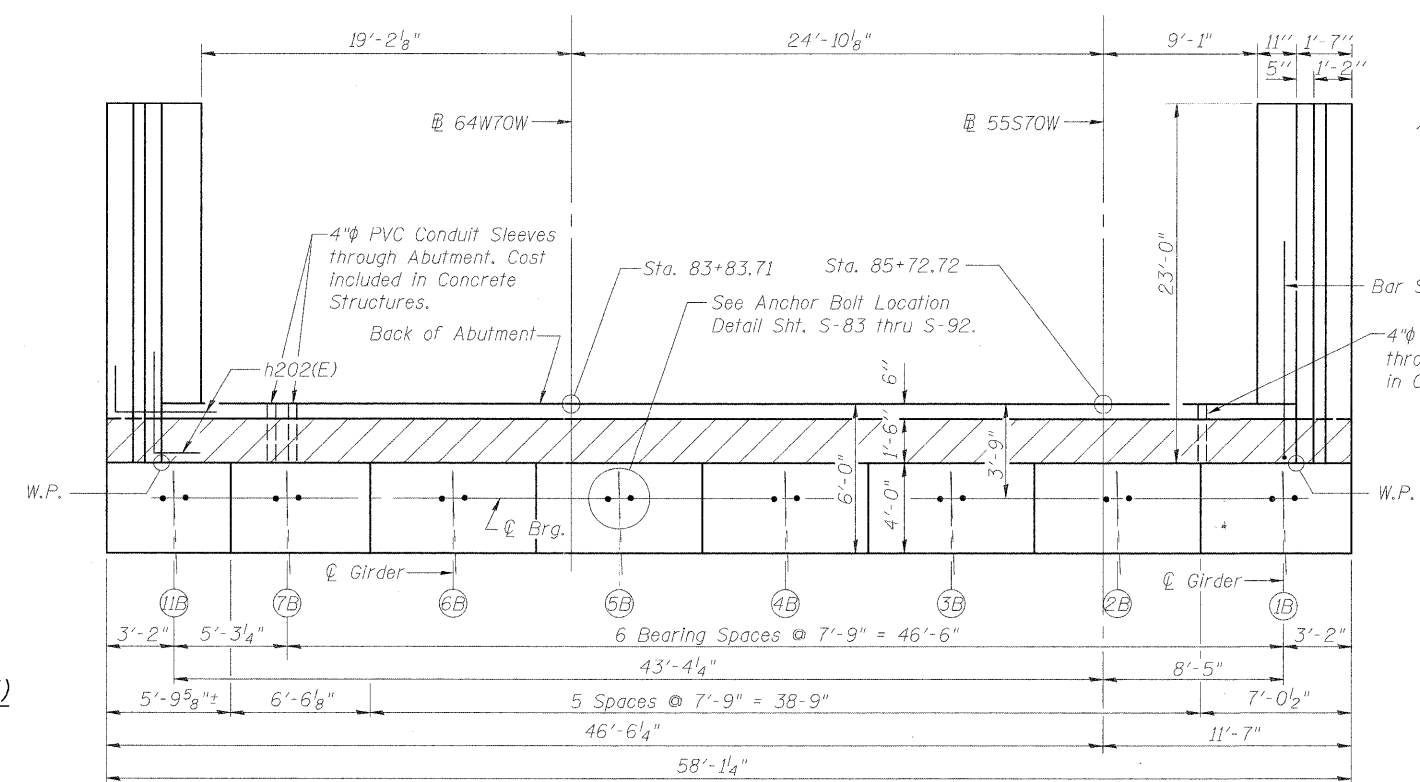


BAR v201(E)

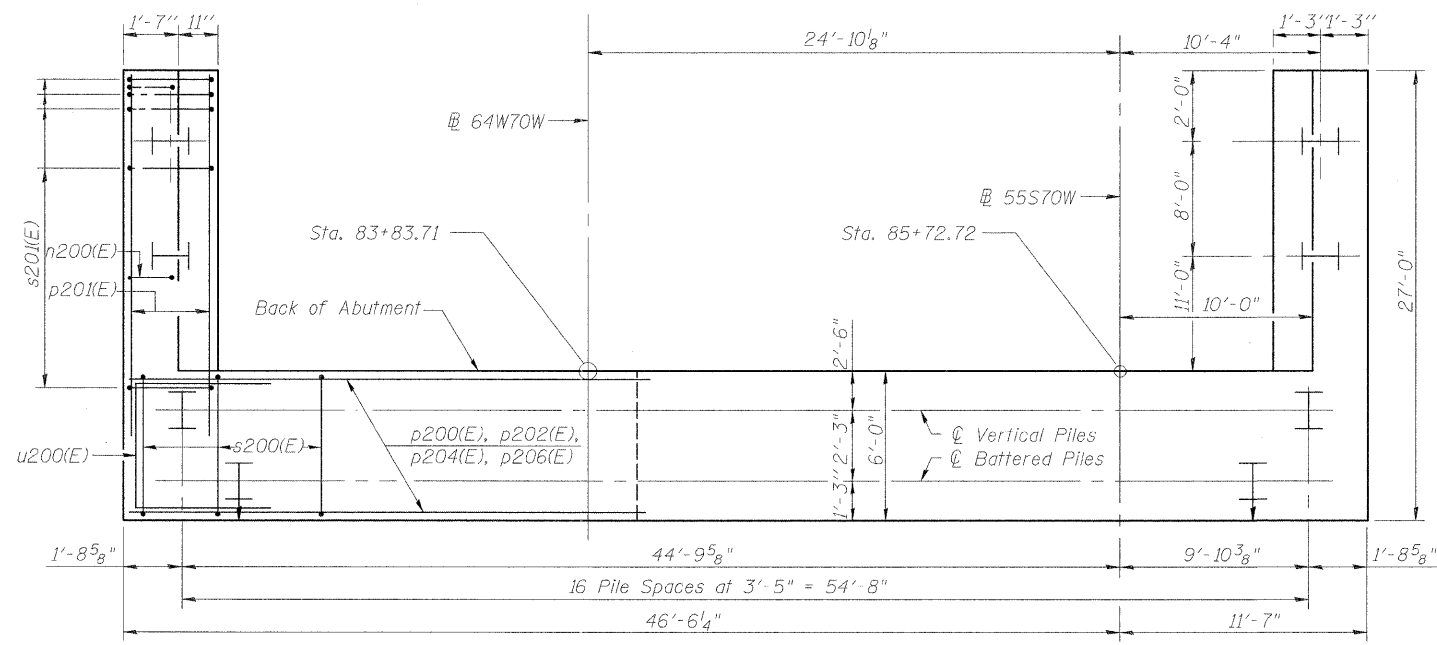


BAR v204(E)

Concrete Sealer shall be applied to abutment backwalls, bearing seats and expose faces of abutment cap.
 For details and quantity of Bar Splicers, see sheet S-123 of S-138.
 For details of piles and Concrete Encasement, see sheet S-122 of S-138.
 All dimensions are radial. Wingwall shall be constructed along horizontal curve.



TOP VIEW



PLAN-PILE CAP

PILE DATA

Type: HP 14x89
 Nominal Required Bearing: 500 kips
 Factored Resistance Available: 250 kips
 Est. Length: 141'
 No. Production Piles: 21

Note:
 Piles shall be driven through 2'-0" diameter precored holes extending to elevation 405.0 according to Article 512.09C of the Standard Specifications. Cost included in Driving Piles.

BILL OF MATERIAL

Bar	No.	Size	Length	Shape
h200(E)	14	#5	54'-7"	—
h201(E)	5	#6	54'-7"	—
h202(E)	36	#5	7'-6"	┌
h203(E)	52	#4	22'-8"	—
h205(E)	32	#5	1'-6"	—
n200(E)	48	#6	17'-2"	┌
p200(E)	3	#10	30'-6"	—
p201(E)	12	#7	26'-6"	—
p202(E)	3	#10	33'-9"	—
p203(E)	4	#6	12'-0"	—
p204(E)	4	#10	27'-5"	—
p205(E)	4	#6	19'-2"	—
p206(E)	4	#10	40'-6"	—
p207(E)	4	#10	57'-9"	—
s200(E)	68	#4	18'-5"	┌
s201(E)	54	#4	9'-5"	┌
u200(E)	8	#6	17'-7"	┌
u201(E)	33	#4	8'-8"	┌
v200(E)	55	#5	3'-11"	┌
v201(E)	55	#4	3'-3"	┌
v202(E)	48	#6	11'-2"	┌
v204(E)	48	#6	11'-6"	┌
v205(E)	55	#5	10'-4"	┌
v206(E)	55	#5	9'-0"	┌
Item	Unit	Quantity		
Structure Excavation	Cu. Yd.	454.8		
Concrete Structures	Cu. Yd.	112.9		
Reinforcement Bars, Epoxy Coated	Pound	12,060		
Furnishing Steel Piles, HP14x89	Foot	2961		
Driving Piles	Foot	2961		
Pile Shoes	Each	21		
Concrete Sealer	Sq Ft	930		
Porous Granular Embankment (Special)	Cu. Yd.	183.6		
Geocomposite Wall Drain	Sq. Yd.	69		
Pipe Underdrains for Structures 4"	Foot	63		
Conduit Embedded in Structure, 2" Dia., PVC	Foot	17		
Concrete Encasement	Cu. Yd.	9.3		

P:\62046699\100_LAND\9101_Drawing\76200_Master_Consolidated\Structural\082-0323_Sheet\SB99_082-0323_0325_76C75_WestAbut.dgn



USER NAME = BhattA	DESIGNED - DDB	REVISED -
PLOT SCALE = 0.083333 1/ in.	DRAWN - BRD	REVISED -
PLOT DATE = #DATE#	CHECKED - ATB	REVISED -
	DATE - 05-02-11	REVISED -

STATE OF ILLINOIS
 DEPARTMENT OF TRANSPORTATION

WEST ABUTMENT PLANS - S.N. 082-0325
 I-70W OVER I-55, CSX & KCS RAILROADS

SCALE: NONE SHEET NO. S-99 OF S-138 SHEETS STA. TO STA.

F.A.I. RTE.	SECTION	COUNTY	TOTAL SHEETS	SHEET NO.
70	82-1-B-1	ST. CLAIR	319	214
S.N. 082-0323 & S.N. 082-0325		CONTRACT NO. 76C75		
FED. ROAD DIST. NO.		ILLINOIS FED. AID PROJECT		