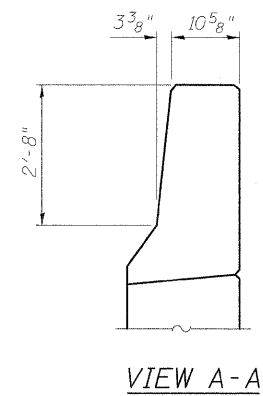
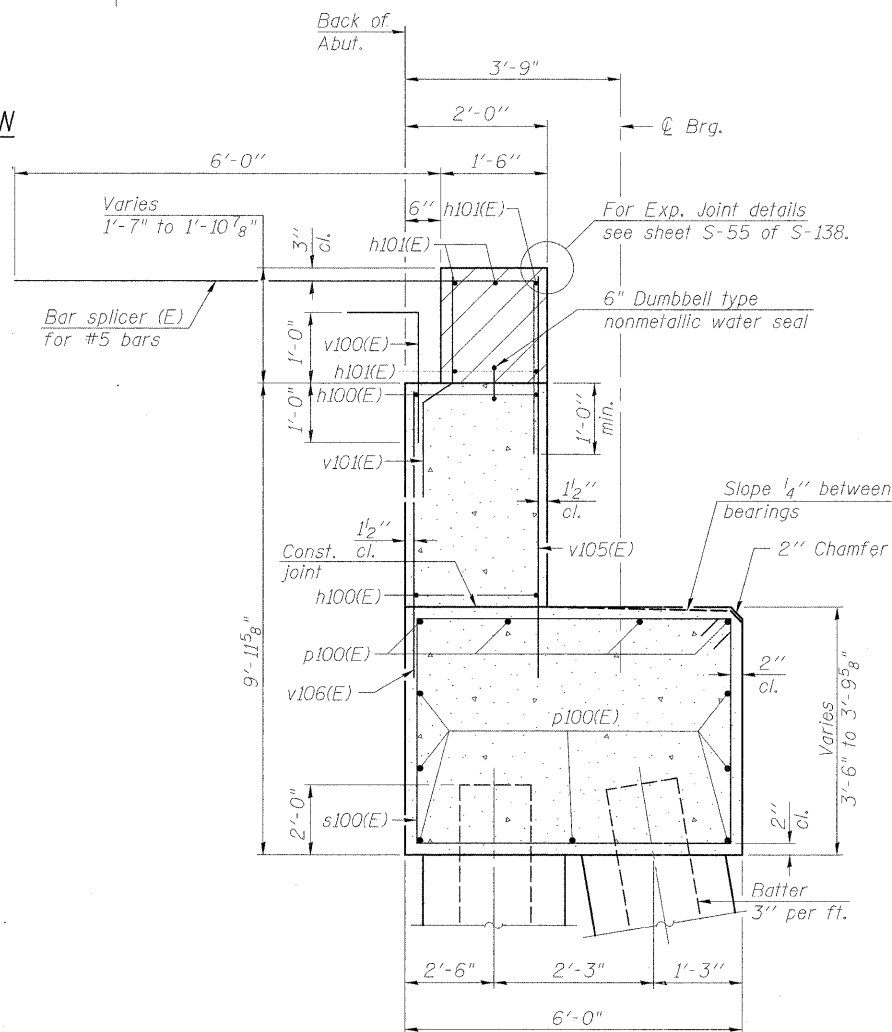


**WING WALL ELEVATION**  
Showing Dimensions

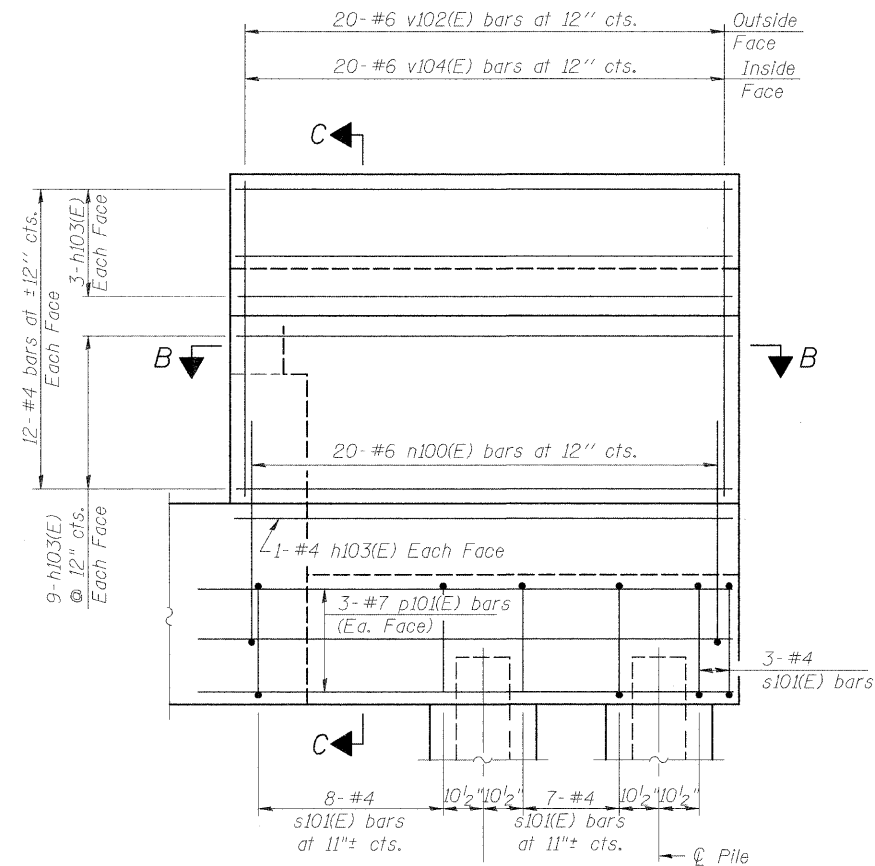
End Post shall be poured after bridge parapet is in place. Form top surface to match parapet grade.



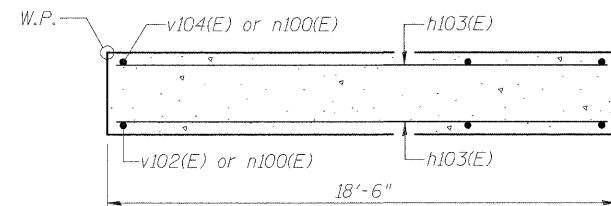
**VIEW A-A**



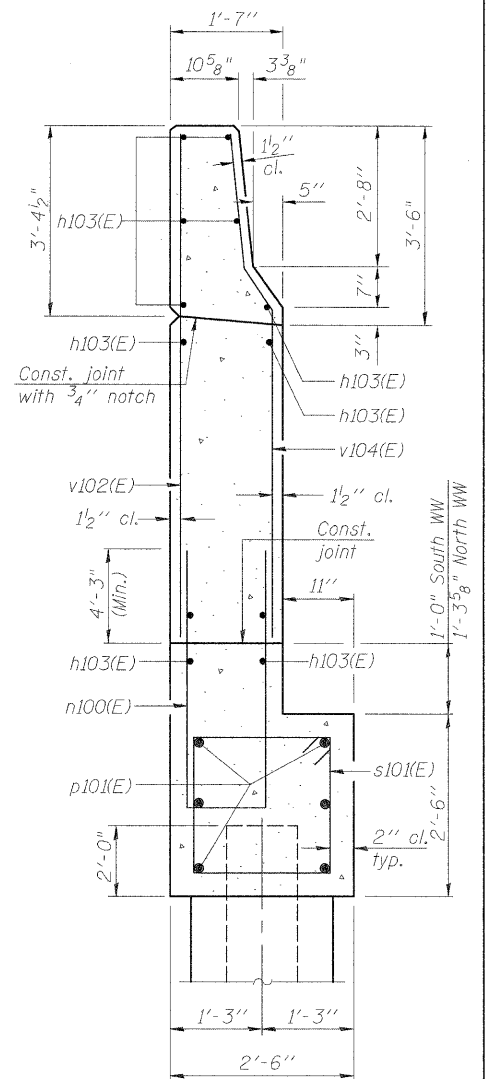
**SEC. THRU ABUT.**



**WING WALL ELEVATION**  
Showing Reinforcement



**SECTION B-B**



**SECTION C-C**

Notes:  
Hatched area to be poured after superstructure false work has been removed. Quantity of concrete included with Concrete Superstructure.  
Space reinforcement in cap to miss anchor bolts.  
Pour steps monolithically with cap.  
Quantity of concrete in end post included with Concrete Superstructure on sheet S-44 of S-138.  
For Concrete Encasement details, see sheet S-122 of S-138.  
See Electrical Plans for conduit termination details through Abutment.



USER NAME = BhattA	DESIGNED - DDB	REVISED -
	DRAWN - BRD	REVISED -
PLOT SCALE = 3/4" = 1'-0"	CHECKED - ATB	REVISED -
PLOT DATE = #DATE#	DATE - 04-26-11	REVISED -

**STATE OF ILLINOIS**  
**DEPARTMENT OF TRANSPORTATION**

**EAST ABUTMENT DETAILS - S.N. 082-0325**  
**I-70W OVER I-55, CSX & KCS RAILROADS**

SCALE: NONE SHEET NO. S-98 OF S-138 SHEETS STA. TO STA.

F.A.I. RTE.	SECTION	COUNTY	TOTAL SHEETS	SHEET NO.
70	82-1-B-1	ST. CLAIR	319	213
S.N. 082-0323 & S.N. 082-0325			CONTRACT NO. 76C75	
FED. ROAD DIST. NO.		ILLINOIS FED. AID PROJECT		

F:\P\024669\180\_CAD\181\_Drawings\76C75\Master\_Consolidated\Structural\082-0323\_Sheet\SP95\_082-0323\_0325\_76C75\_EastAbut3.dgn